



**CHART 12221\_1**

**CHESAPEAKE BAY ENTRANCE**

**SCALE: 80000**

**EDITION NUMBER: 70**

**EDITION DATE: 09/12/1998**

**AGENCY: USA-NOAA/NOS**

**DATUM: North American 1983 (CONUS)**

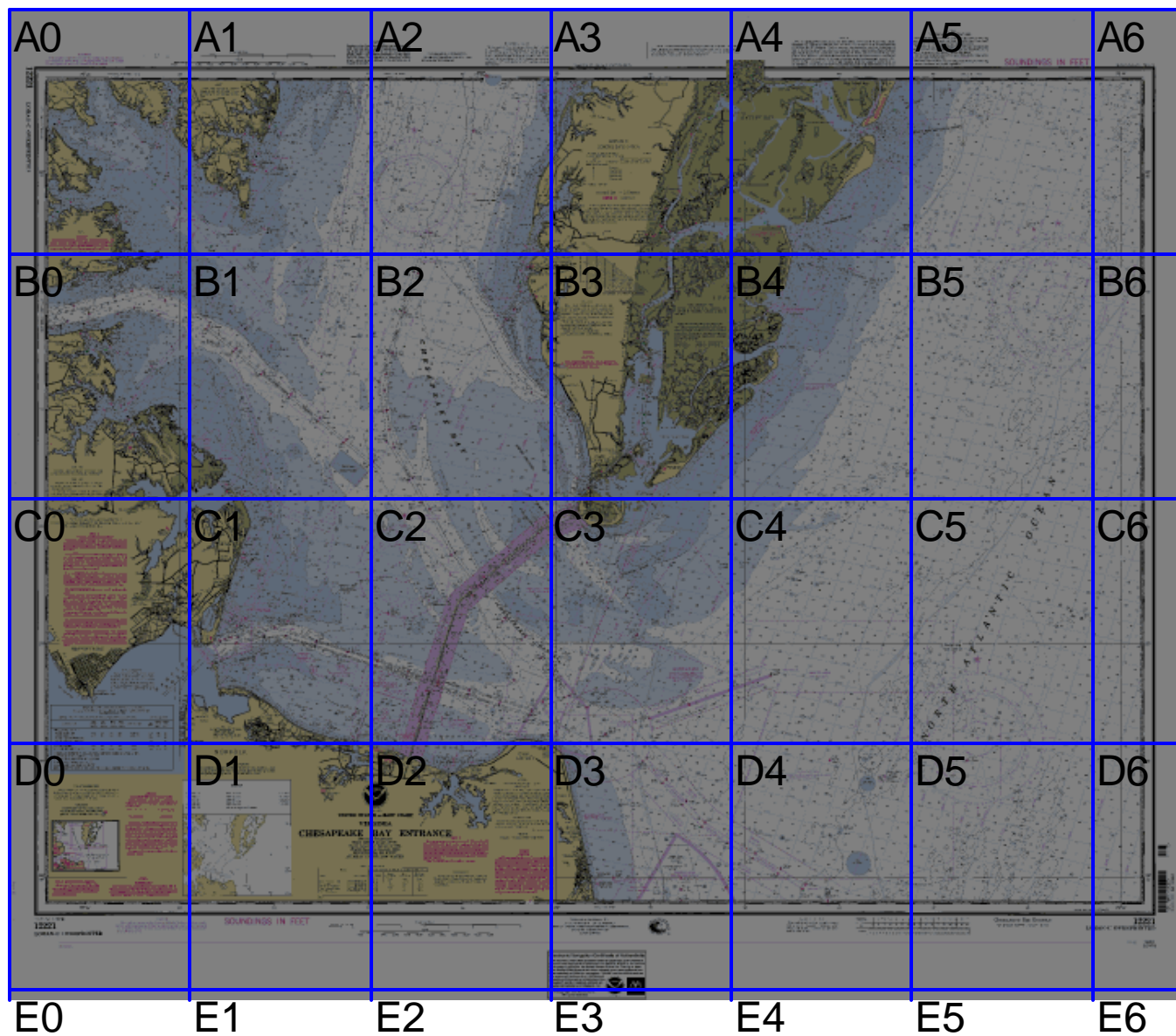
**PROJECTION: MERCATOR**

**DEPTH UNITS: FEET**

**NOT FOR NAVIGATION**

**WARNING: THIS PRINTOUT IS SOLELY FOR YOUR PERSONAL USE AND MAY NOT BE  
SOLD OR DISTRIBUTED IN ANY MANNER. PLEASE REFER TO THE TERMS OF YOUR  
MAPTECH LICENSE AGREEMENT.**

**COPYRIGHT 2000 MAPTECH, INC.**

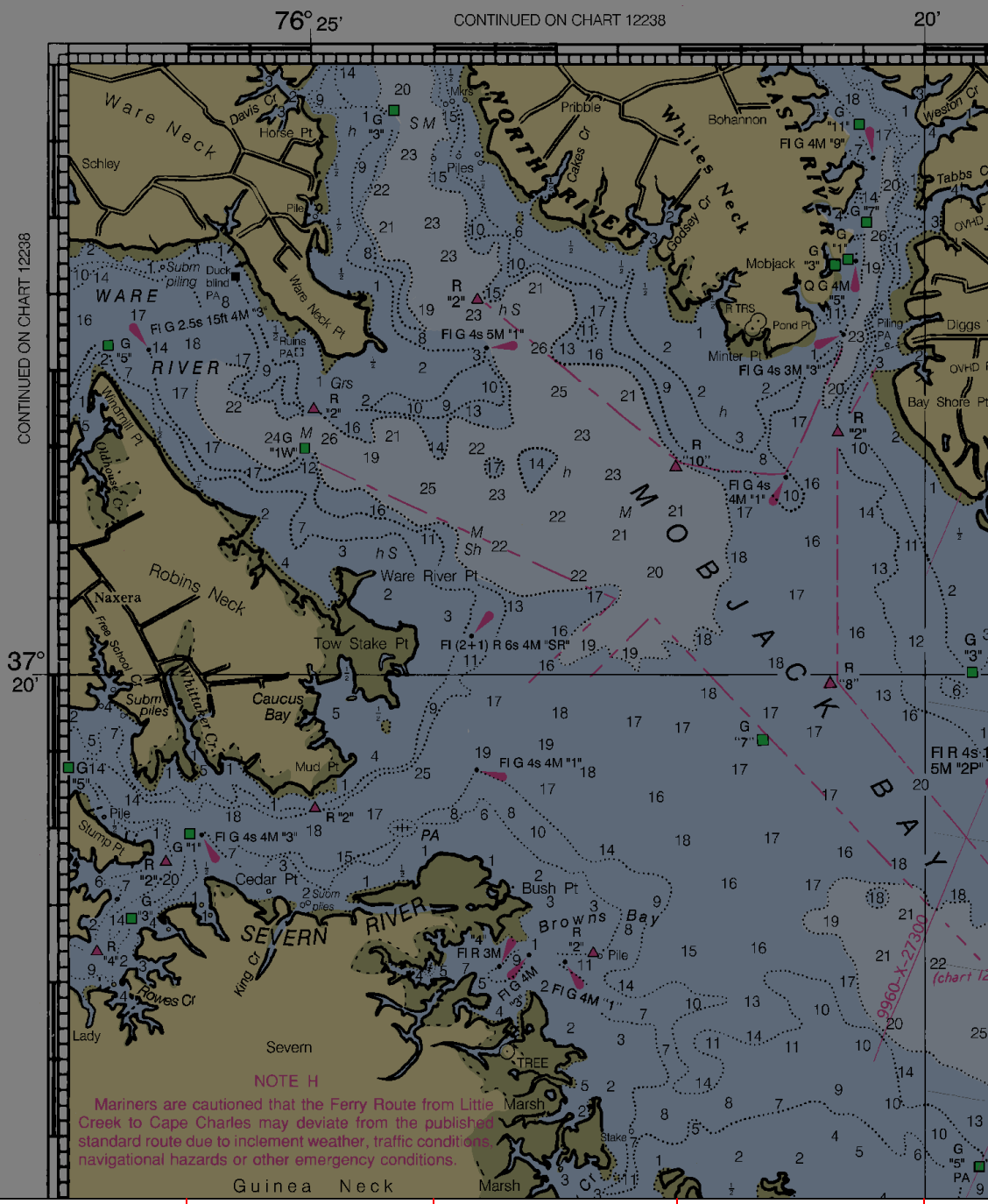
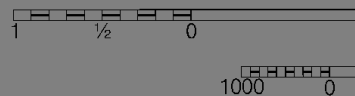


12221

LORAN-C OVERPRINTED

**WARNING**

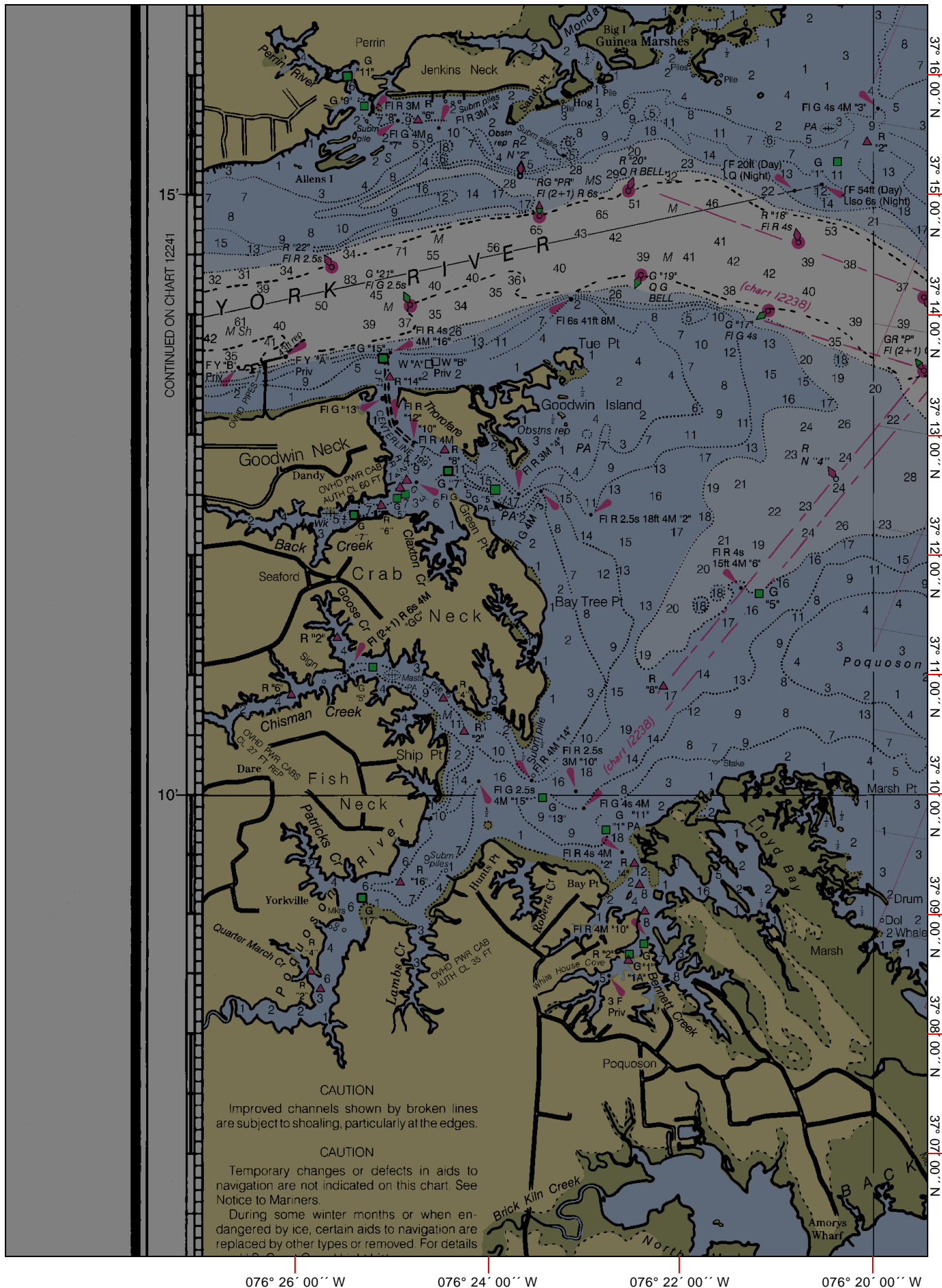
The prudent mariner will not rely solely on any single aid to navigation, particularly on floating aids. See U.S. Coast Guard Light List and U.S. Coast Pilot for details.



**NOTE H**

Mariners are cautioned that the Ferry Route from Little Creek to Cape Charles may deviate from the published standard route due to inclement weather, traffic conditions, navigational hazards or other emergency conditions.

076° 26' 00" W      076° 24' 00" W      076° 22' 00" W      076° 20' 00" W



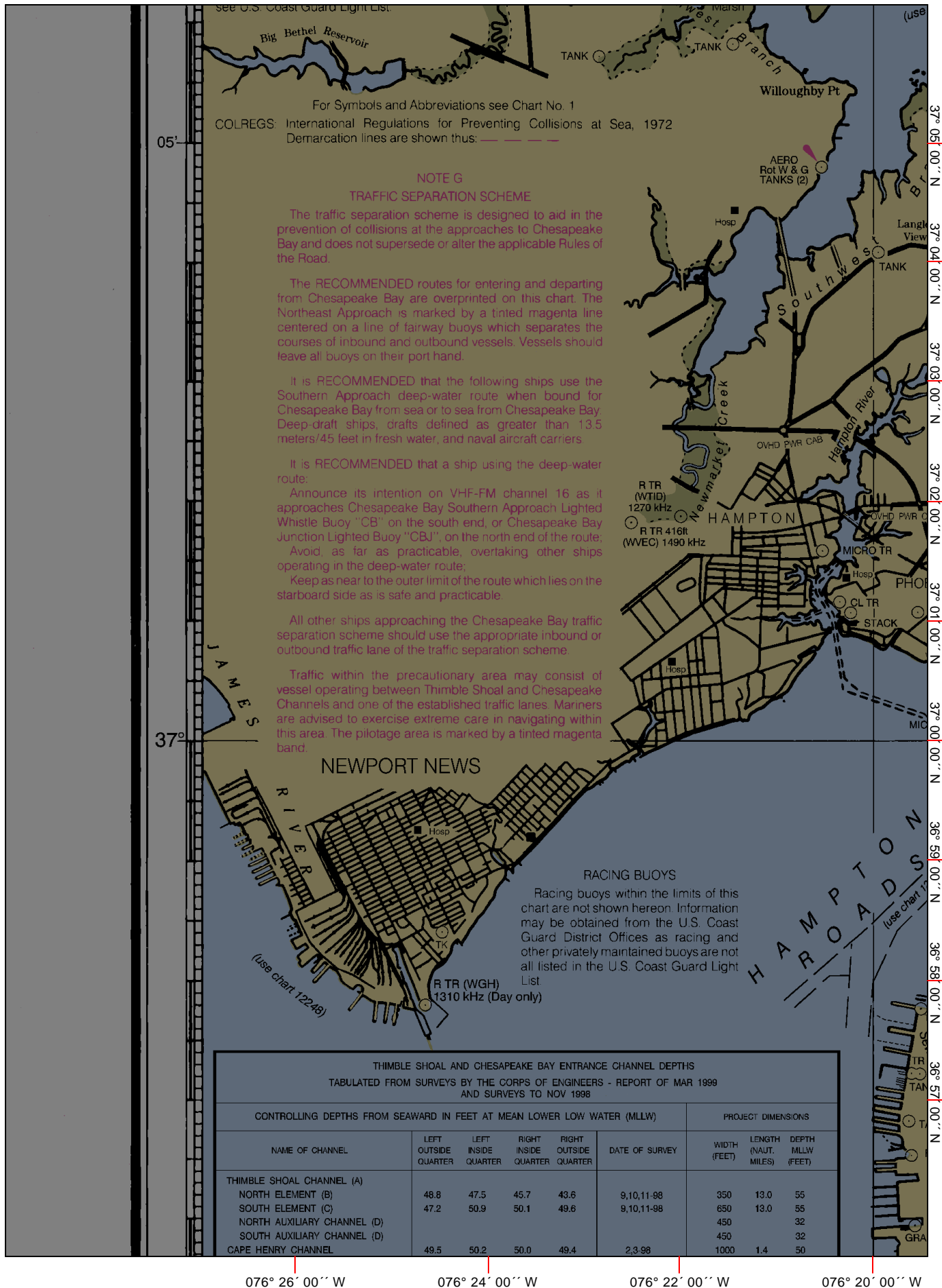
076° 26' 00" W

076° 24' 00" W

076° 22' 00" W

076° 20' 00" W




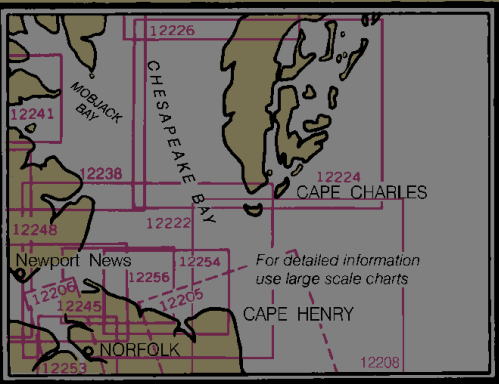


YORK SPIT CHANNEL	44.9	49.6	49.9	46.8	4,5-98	1000(E)	18.4	50
YORK RIVER ENTRANCE CHANNEL	35.1	37.5	45.3	36.1	6-94	750	13.8	39

A. CHANNEL IS RESTRICTED TO EXCLUDE VESSELS AND TOWS DRAWING LESS THAN 25 FEET.  
 B. PORTION OF PROJECT MAINTAINED TO 45 FEET.  
 C. PORTION OF PROJECT MAINTAINED TO 50 FEET.  
 D. PROJECT MAINTENANCE DISCONTINUED.  
 E. CHANNEL WIDTH MAINTAINED TO 800 FEET.  
 NOTE - CONSULT THE CORPS OF ENGINEERS FOR CHANGES SUBSEQUENT TO THE ABOVE INFORMATION.

**POLLUTION REPORTS**  
 Report all spills of oil and hazardous substances to the National Response Center via 1-800-424-8802 (toll free), or to the nearest U.S. Coast Guard facility if telephone communication is impossible (33 CFR 153).

**CAUTION**  
 Mariners are warned to stay clear of the protective riprap surrounding navigational light structures shown thus: 



**LOCAL MAGNETIC DISTURBANCE**  
 Differences of as much as 6° from the normal variation have been observed 3 to 17 nautical miles offshore from Cape Henry to Currituck Beach Light.

**NOTE D  
 DANGER AREA**  
 Area is open to unrestricted surface navigation but all vessels are cautioned neither to anchor, dredge, trawl, lay cables, bottom, nor conduct any other similar type of operation because of residual danger from mines on the bottom.

**CAUTION**  
 This chart has been corrected from the Notice to Mariners published by the National Imagery and Mapping Agency and the Local Notice issued periodically by each U.S. Coast Guard district to the date lower left hand corner.

30 inches

70th Ed., Sept. 12/98 ■  
**12221**  
**LORAN-C OVERPRINTED**

40 inches

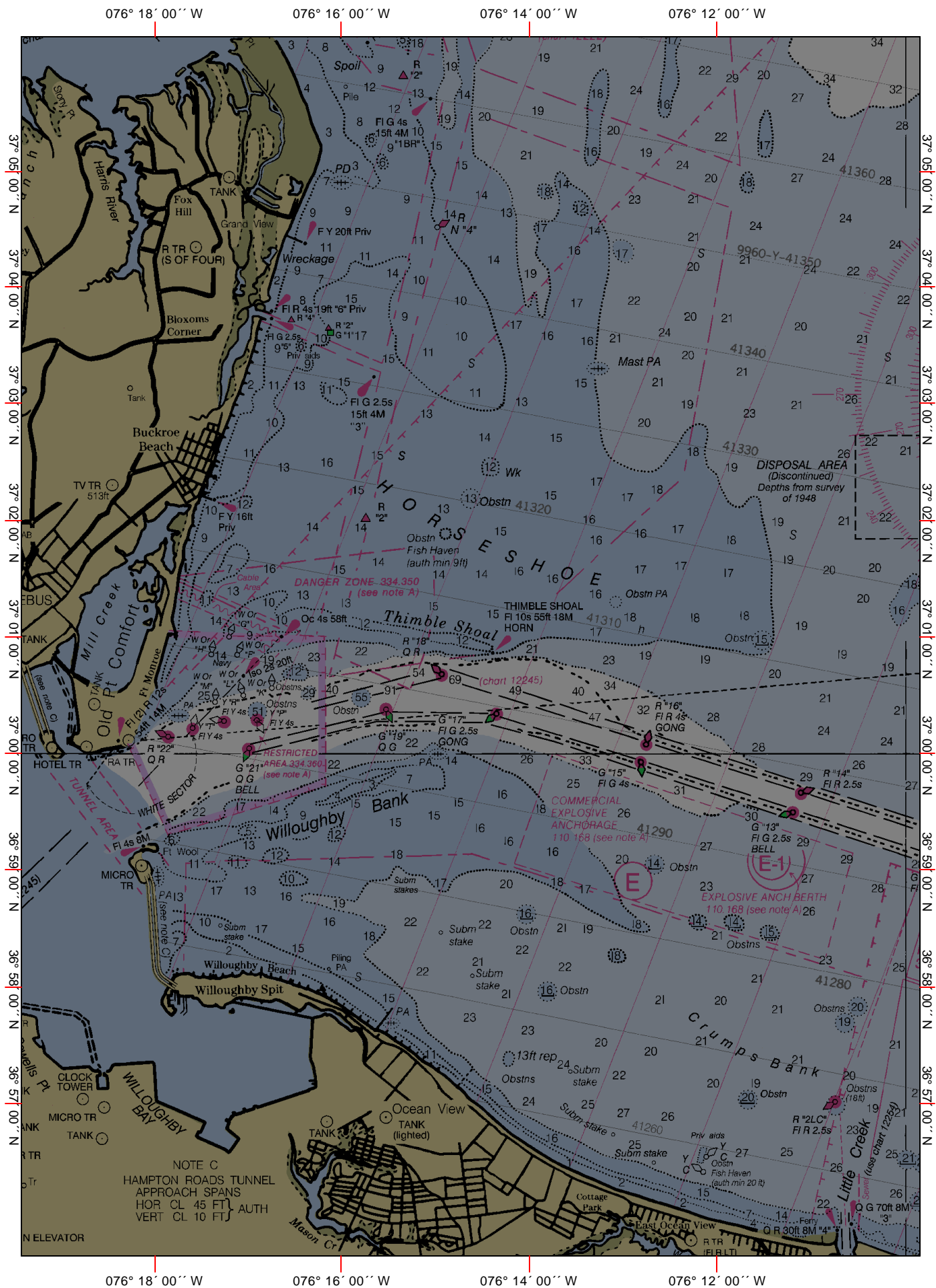


Chart Number: 12221\_1    Revision Number: 0    Cleared Date:    Date Printed: 08/06/2001    NOT FOR NAVIGATION    Page: E0









076° 18' 00'' W

076° 16' 00'' W

076° 14' 00'' W

076° 12' 00'' W

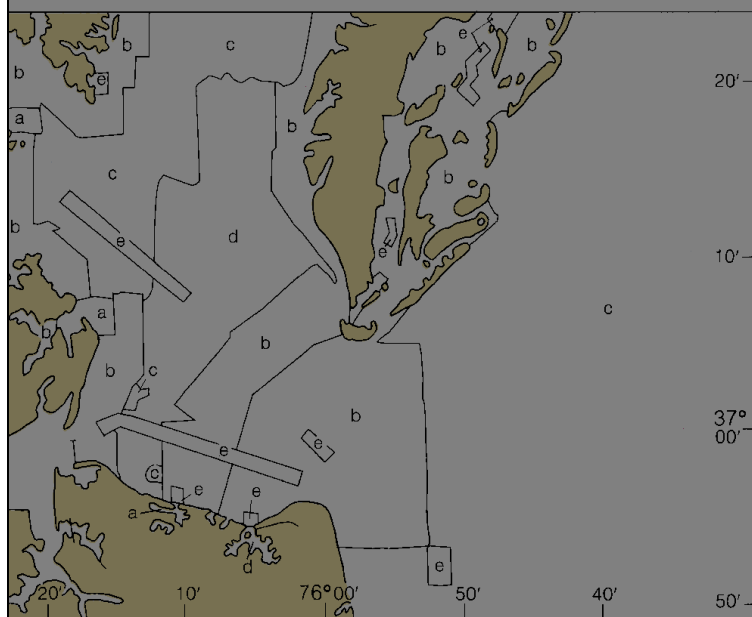
## NORFOLK

## SOURCE DIAGRAM

The outlined areas represent the limits of the most recently surveyed hydrographic information that has been evaluated for charting. Charted hydrography may originate from these and prior surveys.

## SOURCE

1947-63	NOS Surveys	1: 5,000
1949-97	NOS Surveys	1:10,000
1952-81	NOS Surveys	1:20,000
1948-52	NOS Surveys	1:40,000
1980-98	Corps of Engineers Surveys	



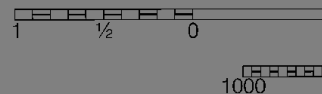
# UNITED STATES NAVY CHESAPEAKE

Mercator  
Scale 1:80,000  
North America  
(World Geodetic System)  
SOUNDINGS  
AT MEAN LOW

Place		TIDAL IN
Name	(LAT/LONG)	Me H
Great Machipongo Inlet	(37°24'N/75°43'W)	
Fishermans Island	(37°06'N/75°59'W)	
Old Point Comfort	(37°00'N/76°19'W)	
Tue Marshes Light	(37°14'N/76°23'W)	
Wolf Trap Light	(37°23'N/76°11'W)	

(797)

## SOUNDINGS IN FEET



Published weekly  
once to Mariners  
shown in the



Chart Number: 12221\_1    Revision Number: 0    Cleared Date:    Date Printed: 08/06/2001    NOT FOR NAVIGATION

Page: E1

# NOTE S

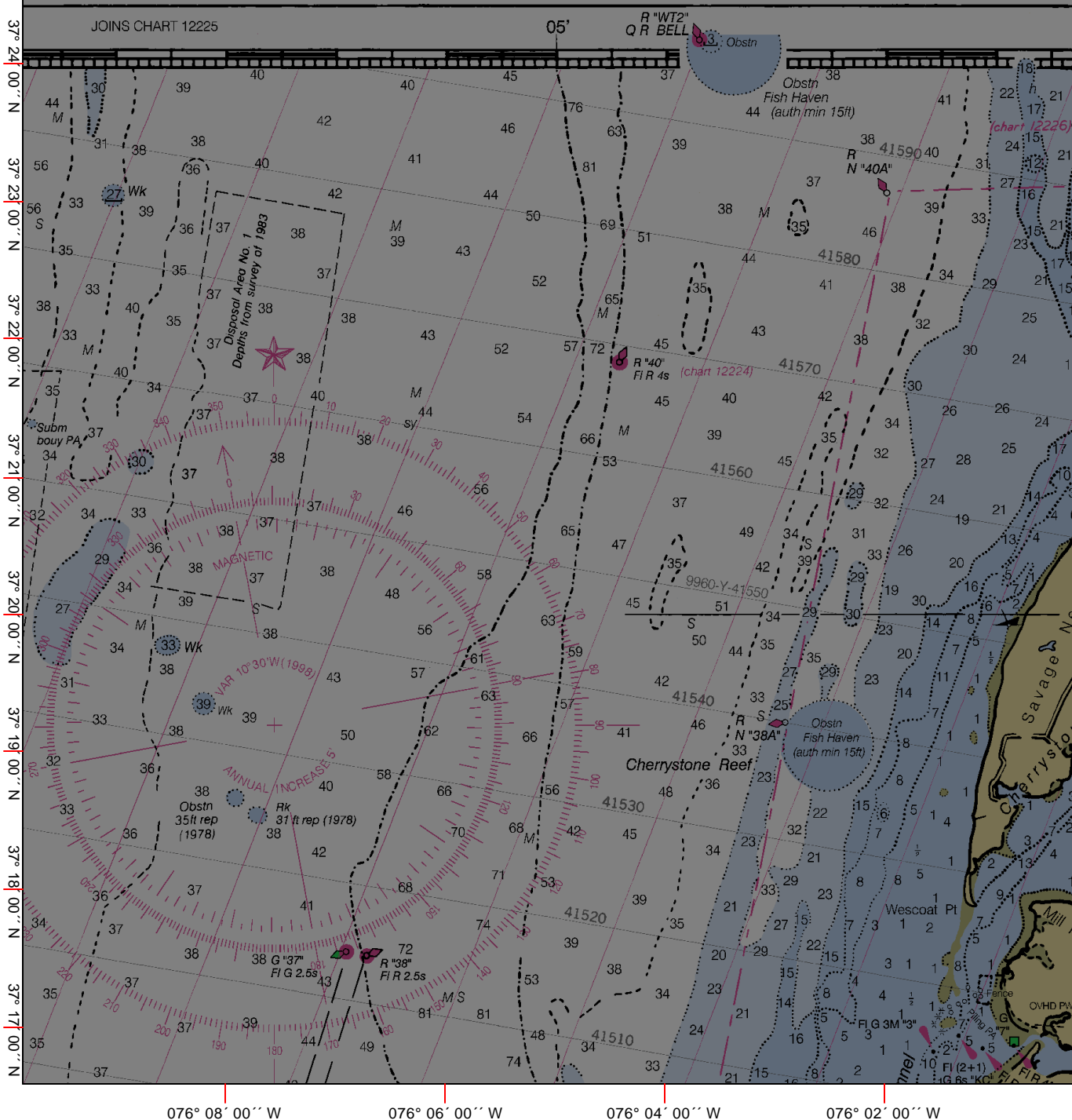
Dumping Sites are contained in 40 additional information concerning the elements for use of the sites may be Environmental Protection Agency (EPA). s appendix for addresses of EPA A through F are uncharted due to

## SUPPLEMENTAL INFORMATION

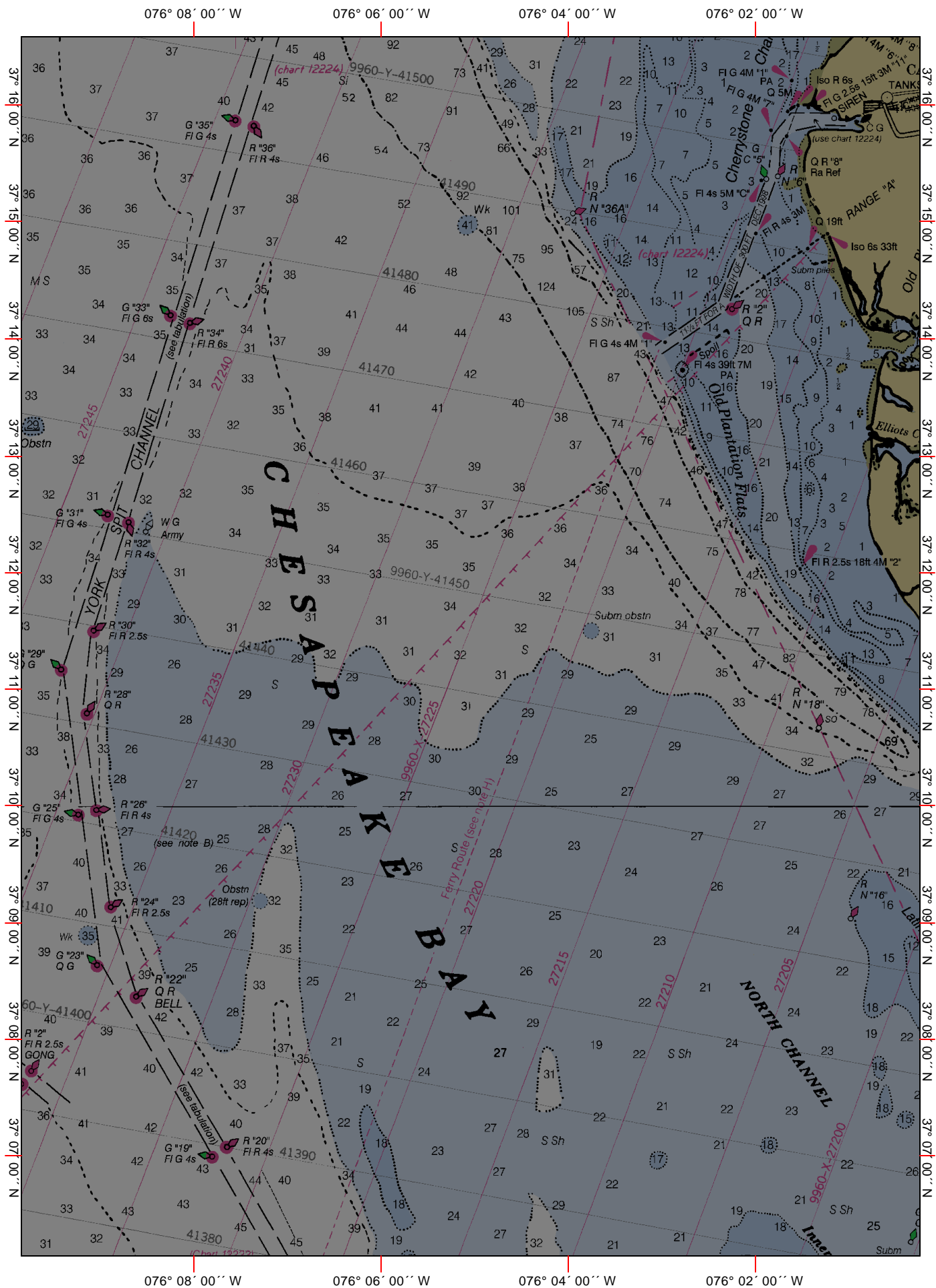
Consult U.S. Coast Pilots 3 and 4 for important supplemental information.

## HORIZONTAL DATUM

The horizontal reference datum of this chart is North American Datum of 1983 (NAD 83), which for charting purposes is considered equivalent to the World Geodetic System 1984 (WGS 84). Geographic positions referred to the North American Datum of 1927 must be corrected an average of 0 524" northward and 1 216" eastward to agree with this chart.









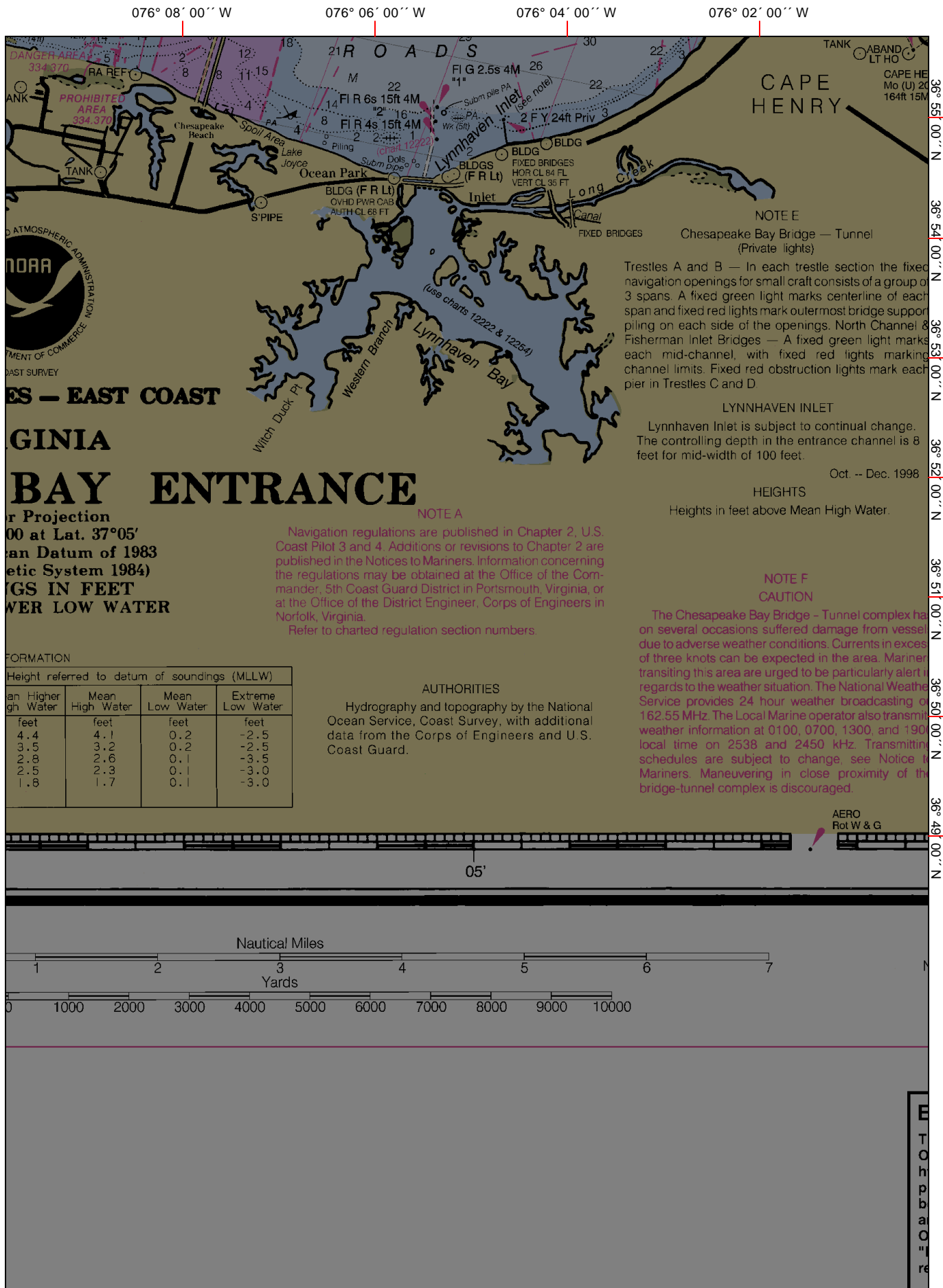


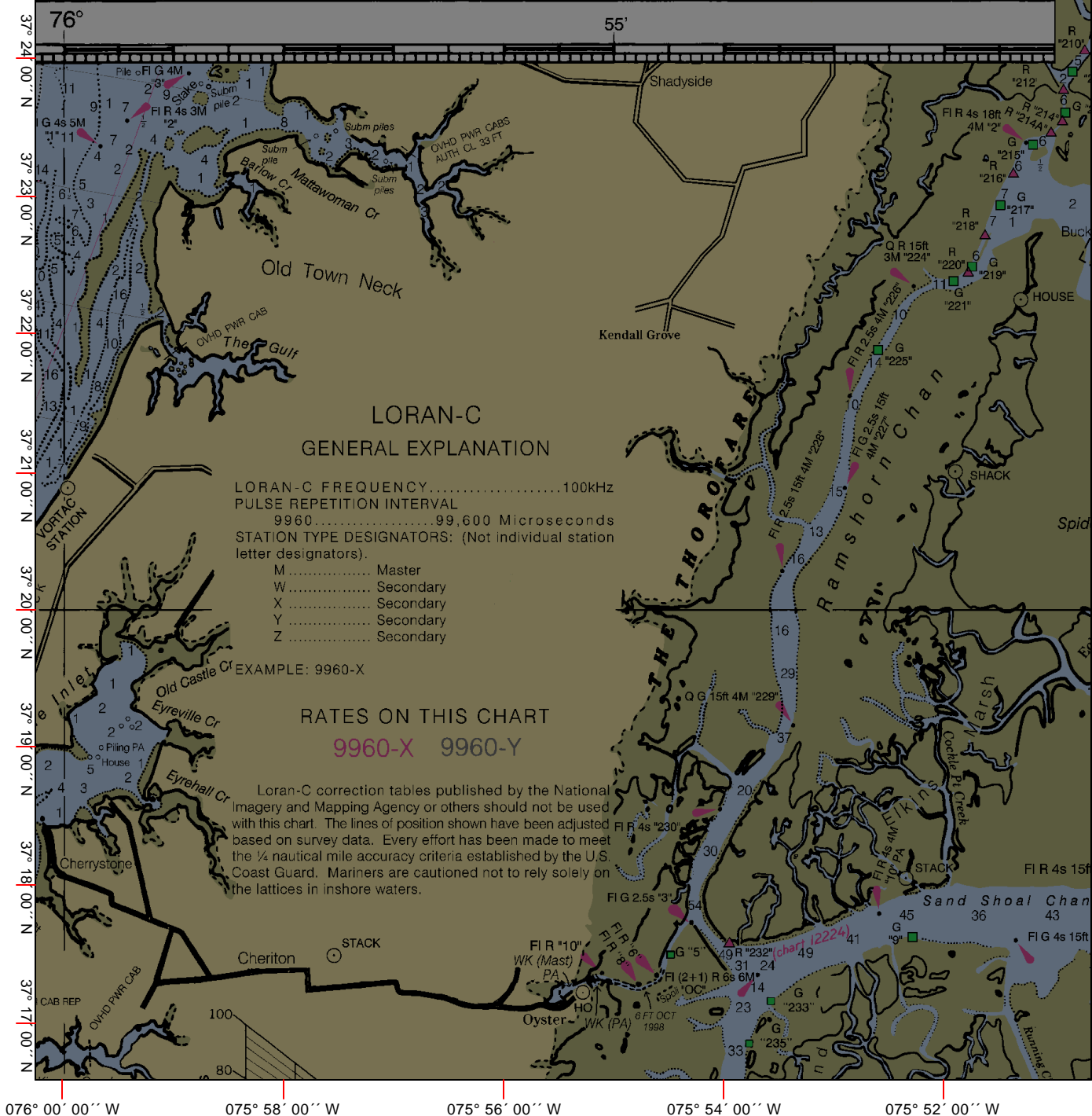


Chart Number: 12221\_1    Revision Number: 0    Cleared Date:    Date Printed: 08/06/2001    NOT FOR NAVIGATION

Page: E2

This nautical chart has been designed to promote safe navigation. The Ocean Service encourages users to submit corrections, additions, or comments improving this chart to the Chief, Marine Chart Division (N/CS2), National Ocean Service, NOAA, Silver Spring, Maryland 20910-3282.

Formerly C&GS 1222, 1st Ed., Mar. 1913 G-1952-784 KAPP 558



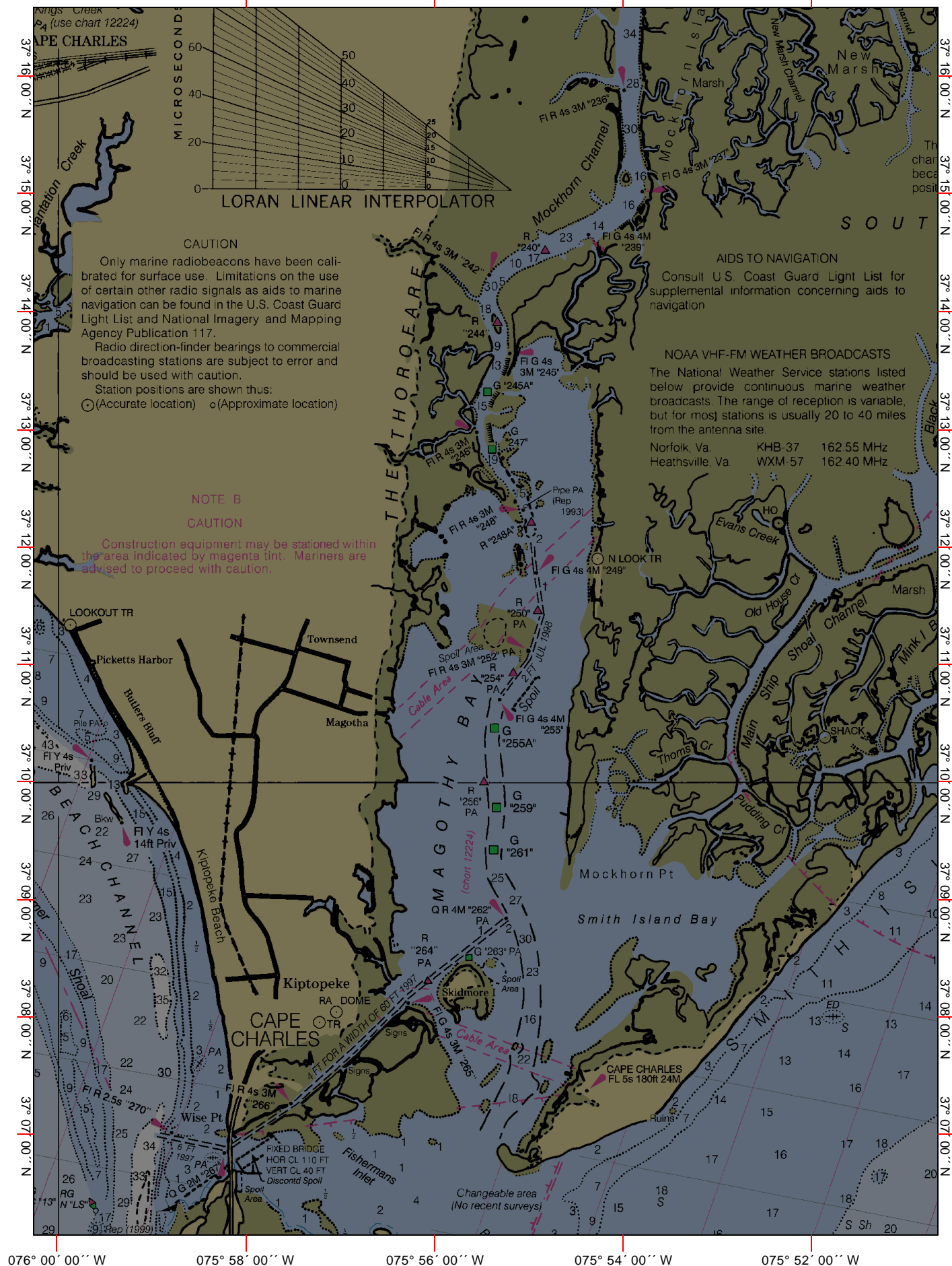


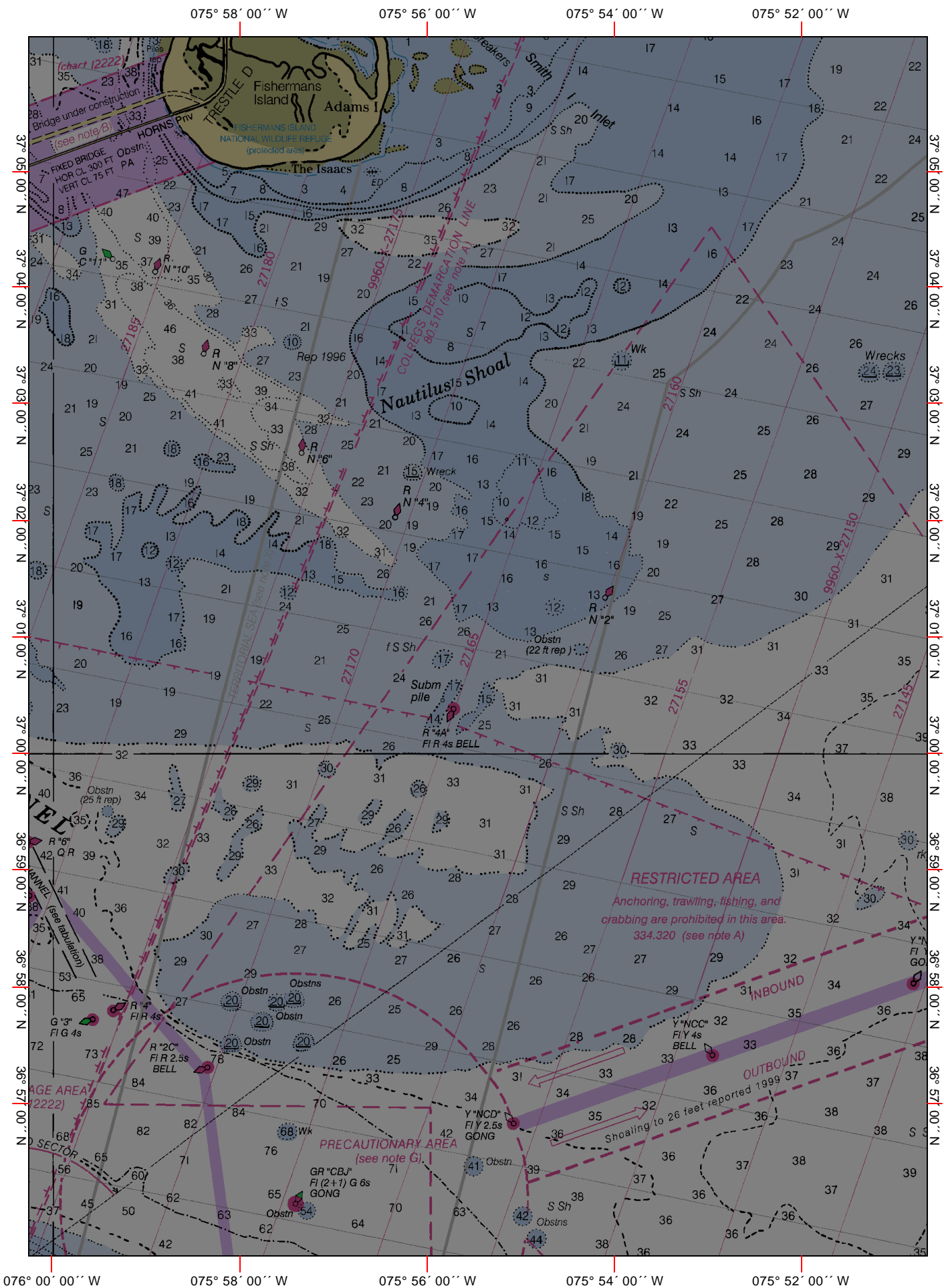
075° 58' 00" W

075° 56' 00" W

075° 54' 00" W

075° 52' 00" W



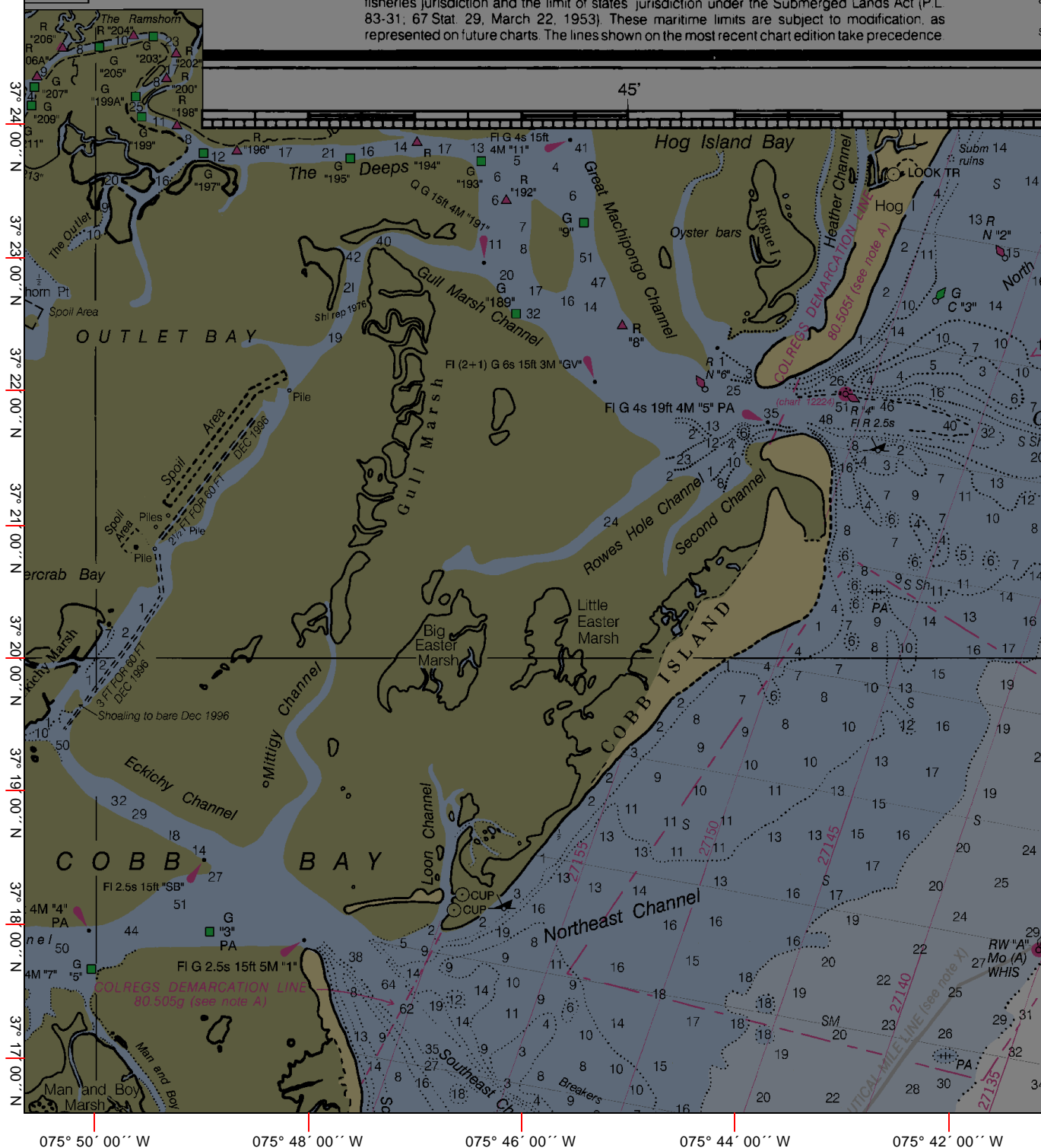




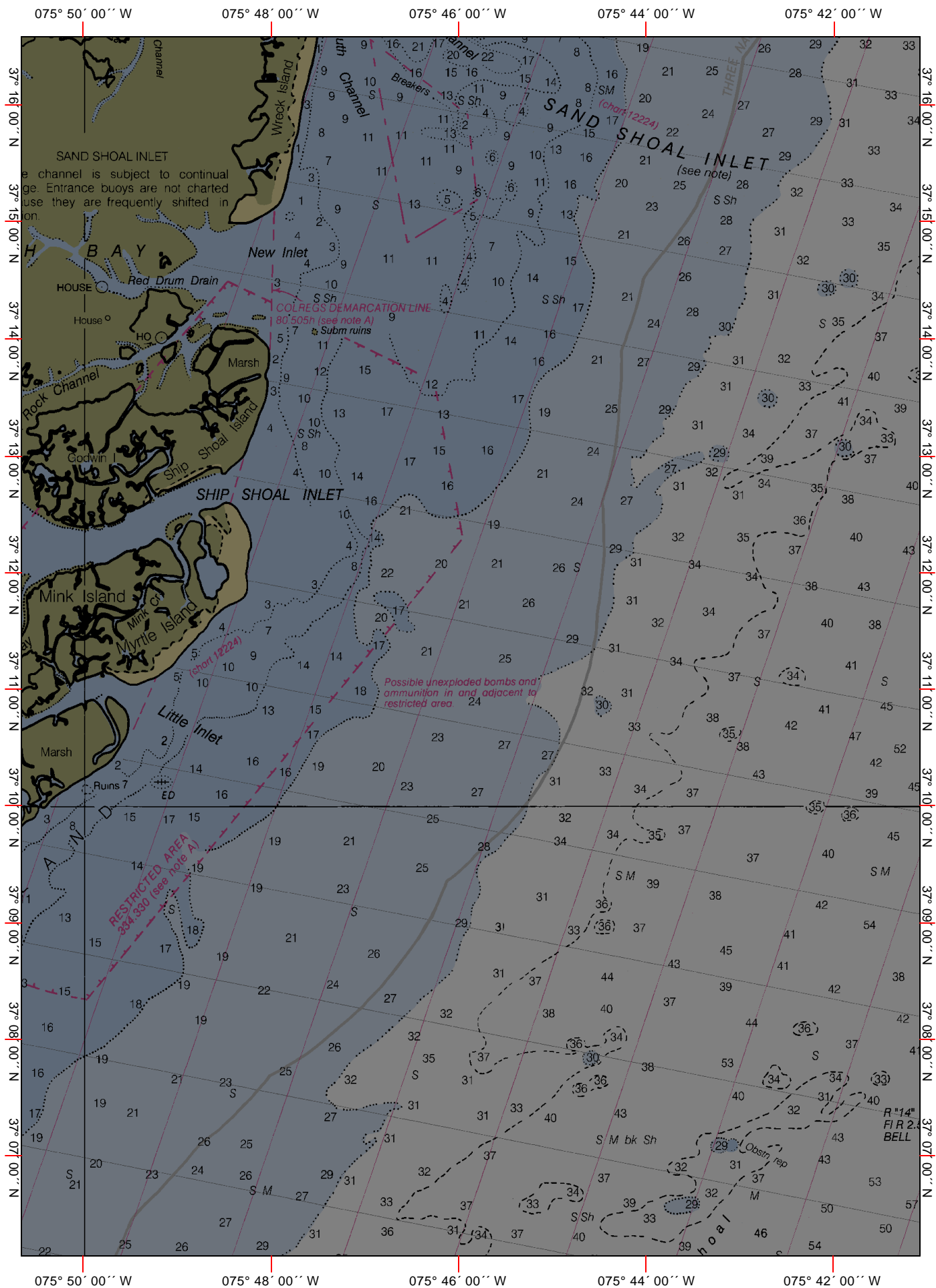


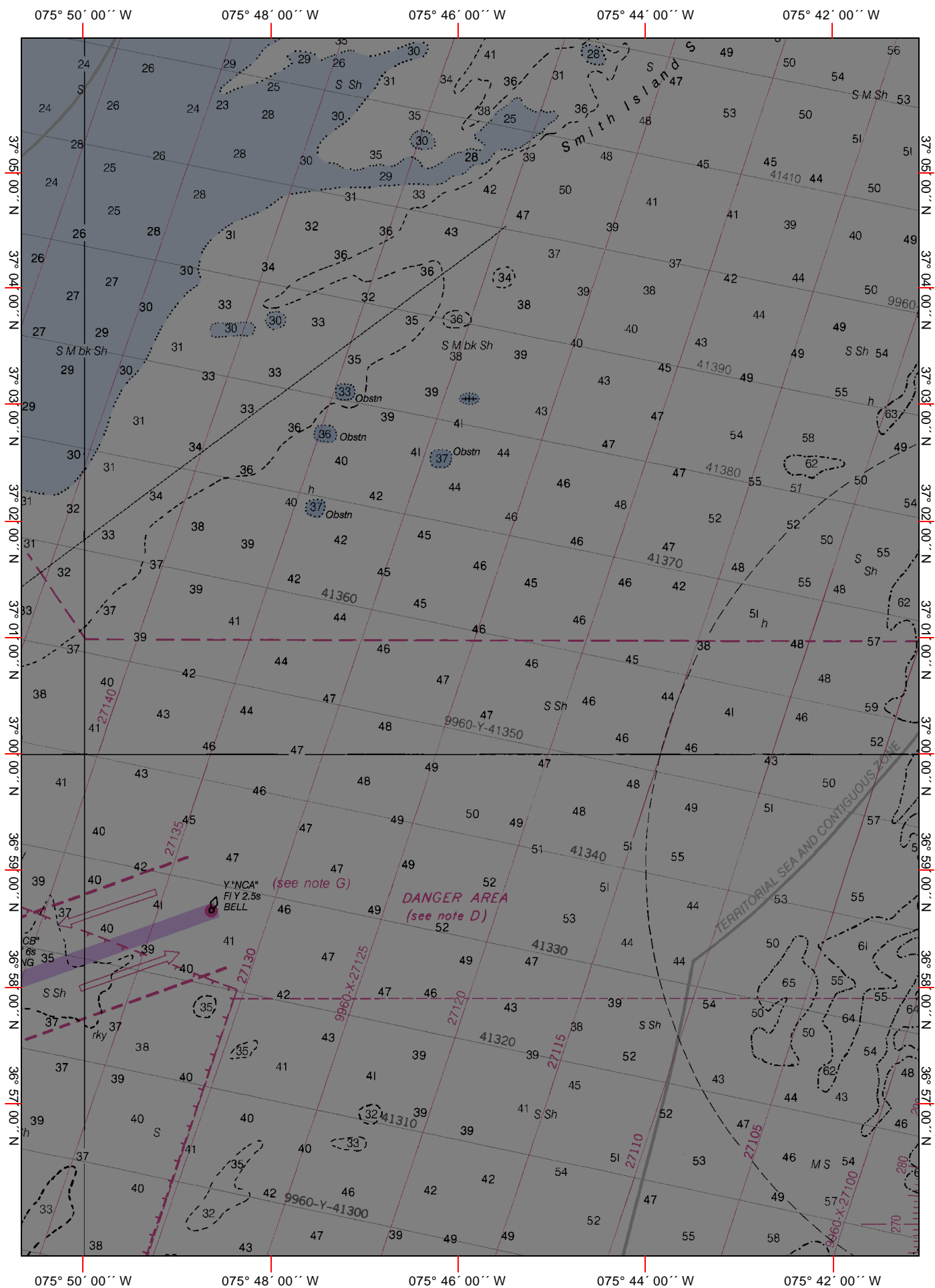
# NOTE X

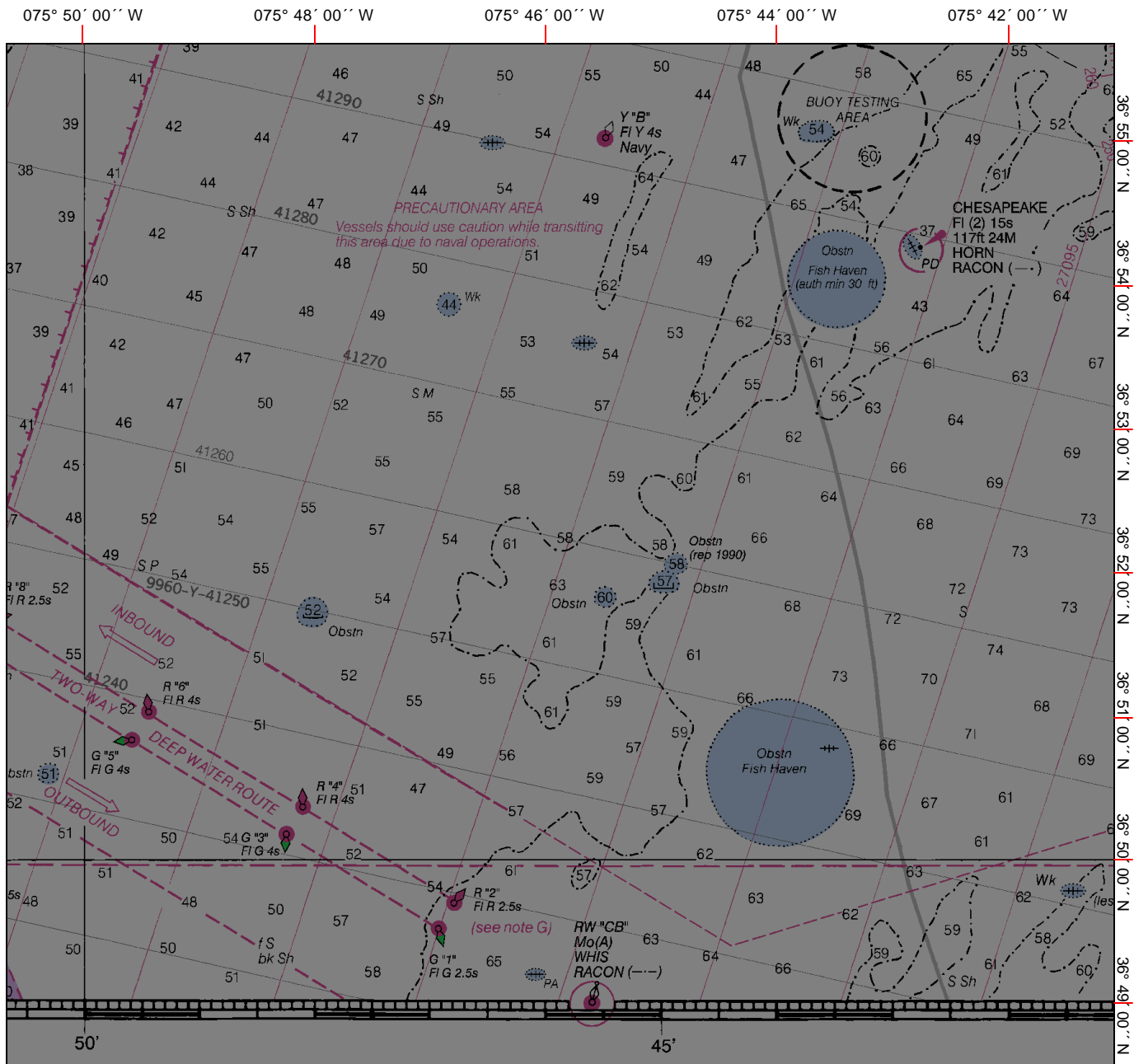
The 12 nautical mile territorial sea was established by Presidential Proclamation 5928, December 27, 1988, and is also the outer limit of the U.S. contiguous zone for the application of domestic law. The 3 nautical mile line, previously identified as the outer limit of the territorial sea, is retained because the proclamation states that it does not alter existing State or Federal law. The 9 nautical mile natural resources boundary off Texas, the Gulf coast of Florida, and Puerto Rico, and the 3 nautical mile line elsewhere remain the inner boundary of the Federal fisheries jurisdiction and the limit of states' jurisdiction under the Submerged Lands Act (P.L. 83-31; 67 Stat. 29, March 22, 1953). These maritime limits are subject to modification, as represented on future charts. The lines shown on the most recent chart edition take precedence.











#### RADAR REFLECTORS

Radar reflectors have been placed on many floating aids to navigation. Individual radar reflector identification on these aids has been omitted from this chart.

FATHOMS	1	2	3	4	5	6	7
FEET	6	12	18	24	30	36	42
METERS	1	2	3	4	5	6	7



Chart Number: 12221\_1    Revision Number: 0    Cleared Date:    Date Printed: 08/06/2001    NOT FOR NAVIGATION

Page: E4

CAUTION

FISH TRAP AREAS AND STRUCTURES

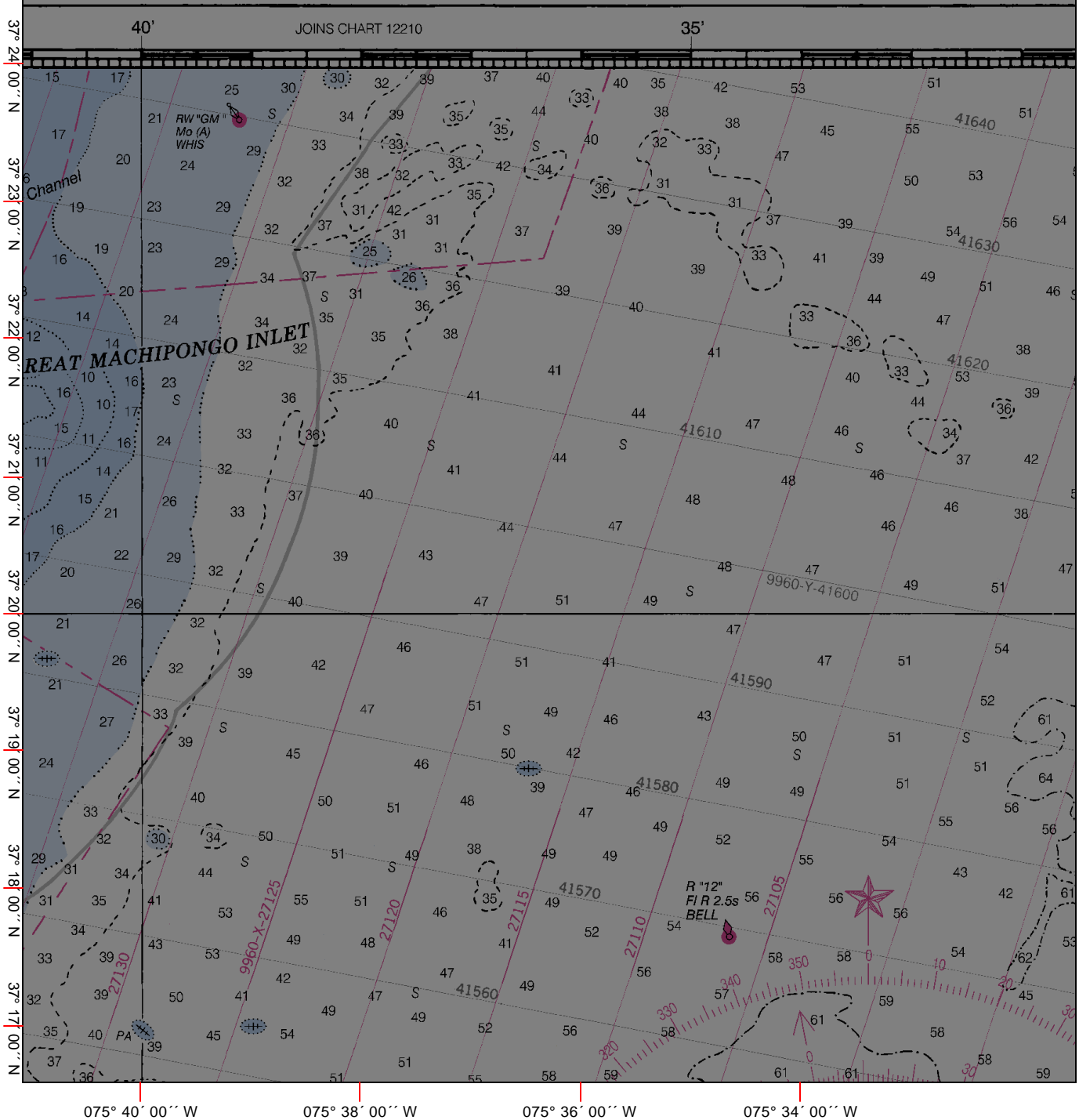
Mariners are warned that numerous uncharted duck blinds and fishing structures, some submerged, may exist in the fish trap areas. Such structures are not charted unless known to be permanent.

Regulations to assure clear passage to and through dredged and natural channels and to established landings are prescribed by the Corps of Engineers in the Code of Federal Regulations.

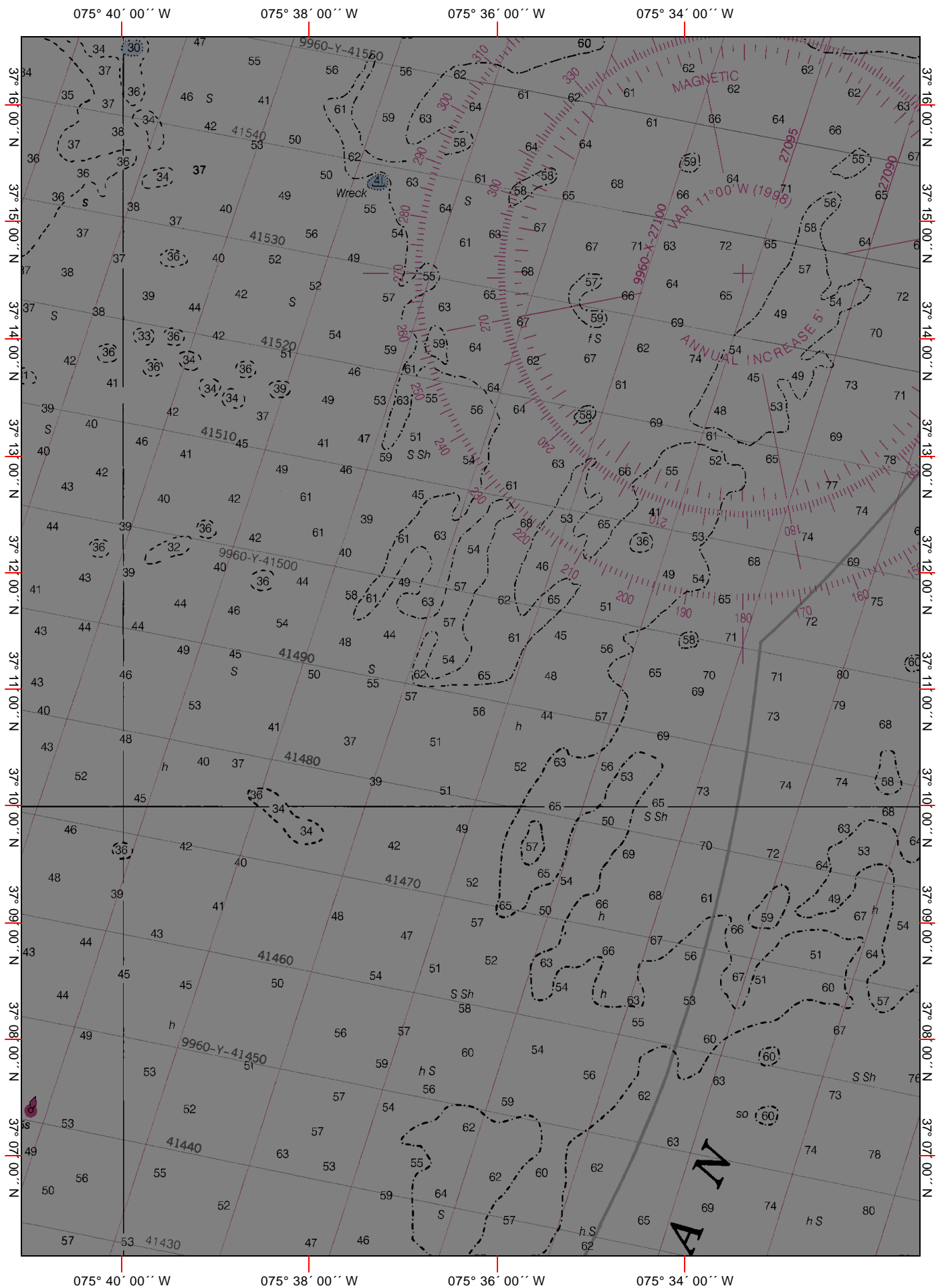
Definite limits of fish trap areas have been established in some areas and those limits are shown thus: \_\_\_\_\_

Where definite limits have not been prescribed the location of fishing structures is restricted only by the regulations.

SOUNDINGS IN FEET







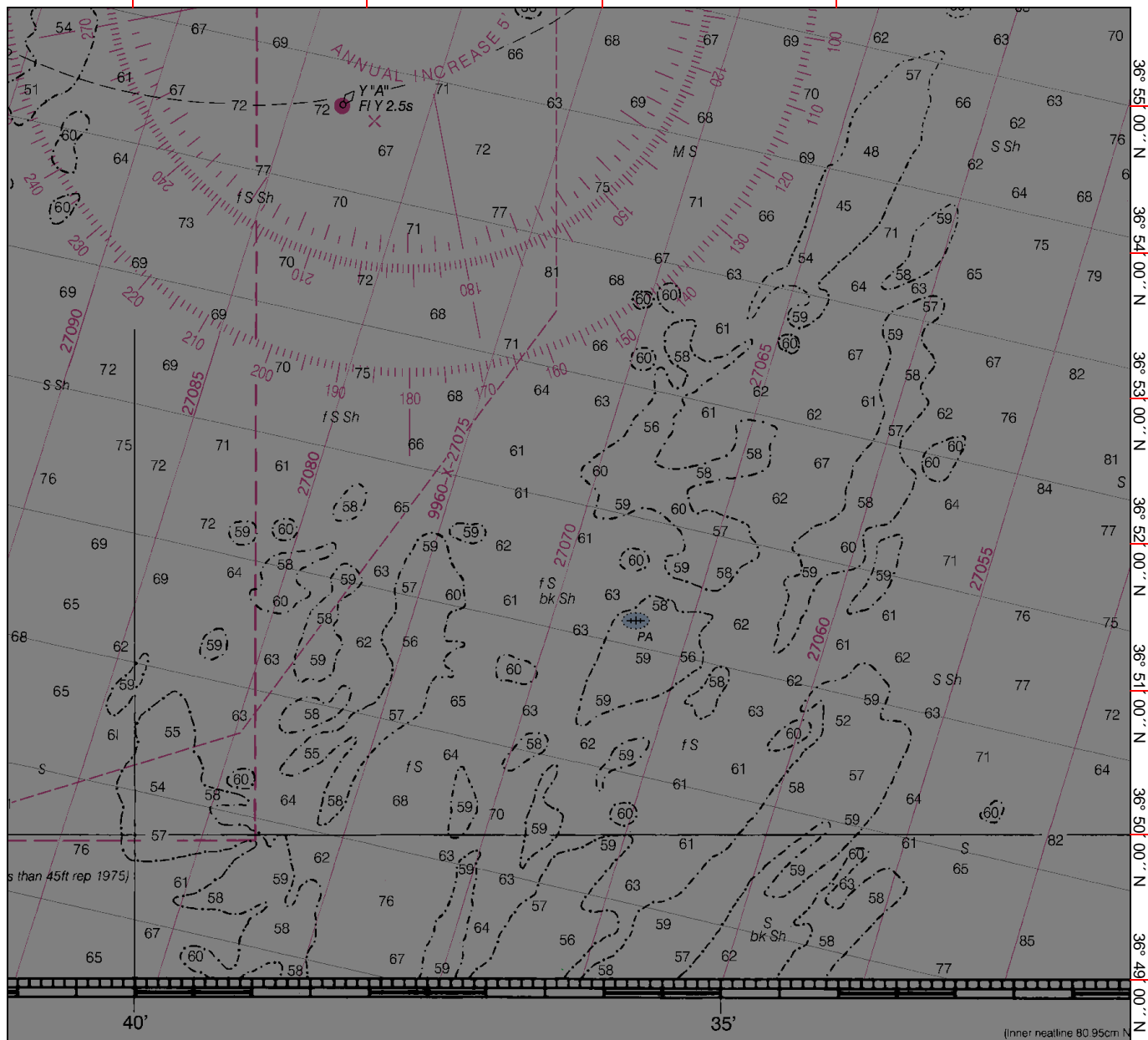


075° 40' 00" W

075° 38' 00" W

075° 36' 00" W

075° 34' 00" W



8	9	10	11	12	13	14	15	16	17
48	54	60	66	72	78	84	90	96	102
15	16	17	18	19	20	21	22	23	24
25	26	27	28	29	30	31			

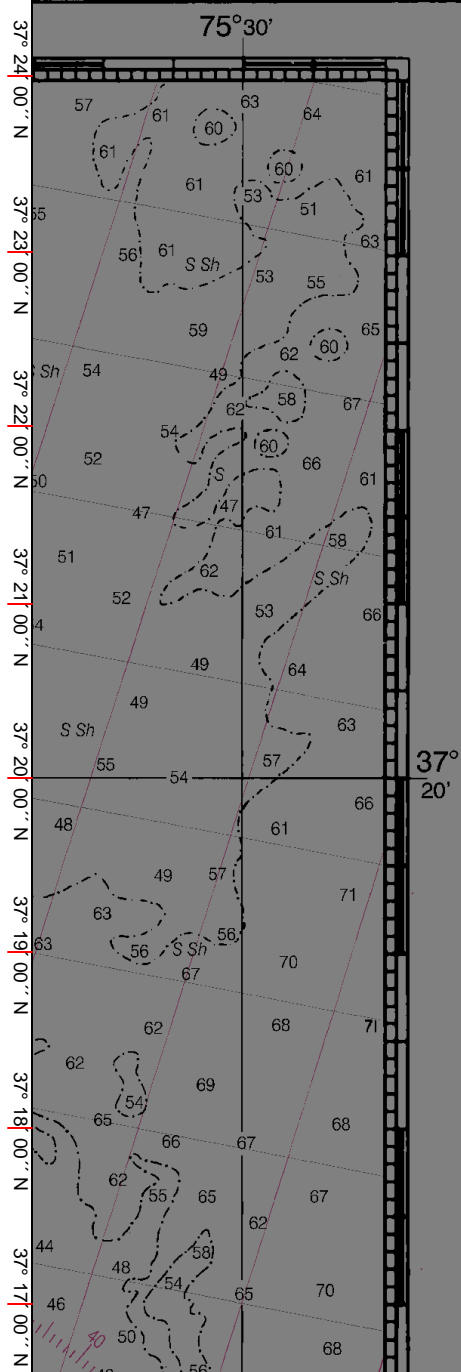
## Chesapeake Bay Entrance

SOUNDINGS IN FEET - SCALE 1:80,000

LO

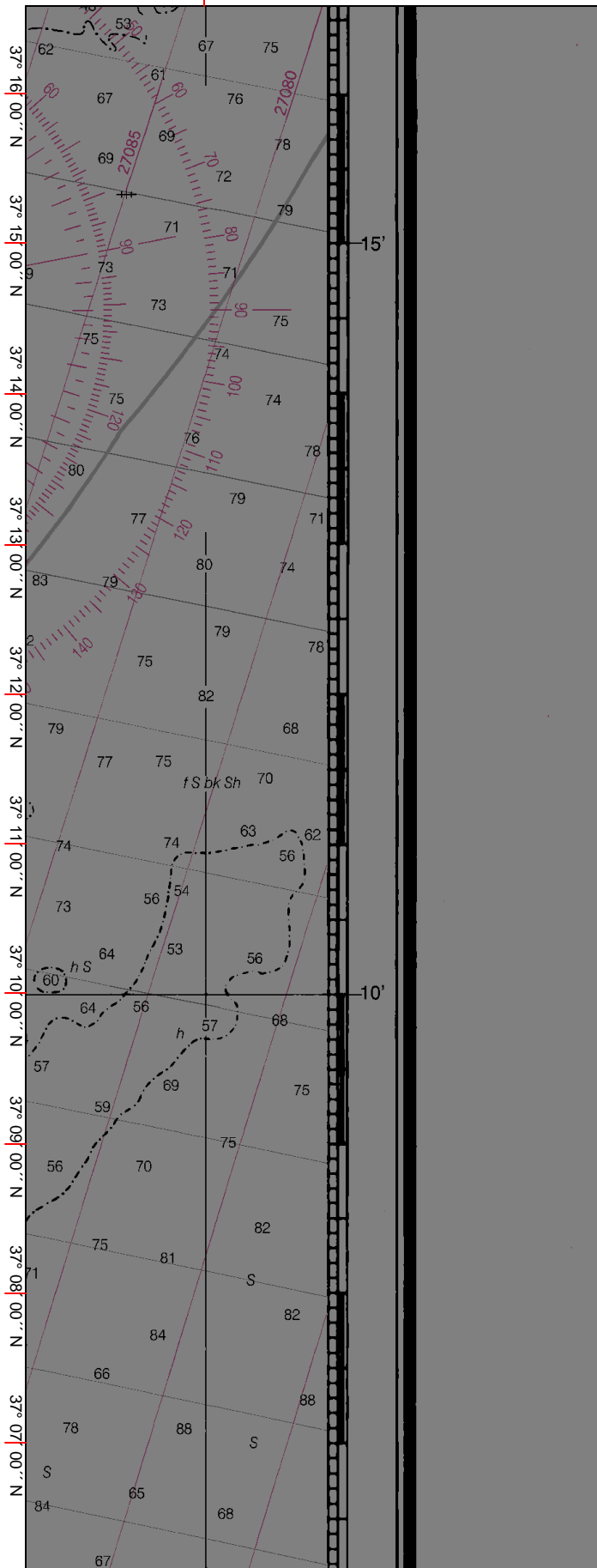


Nautical Chart Catalog No. 1, Panels D, E

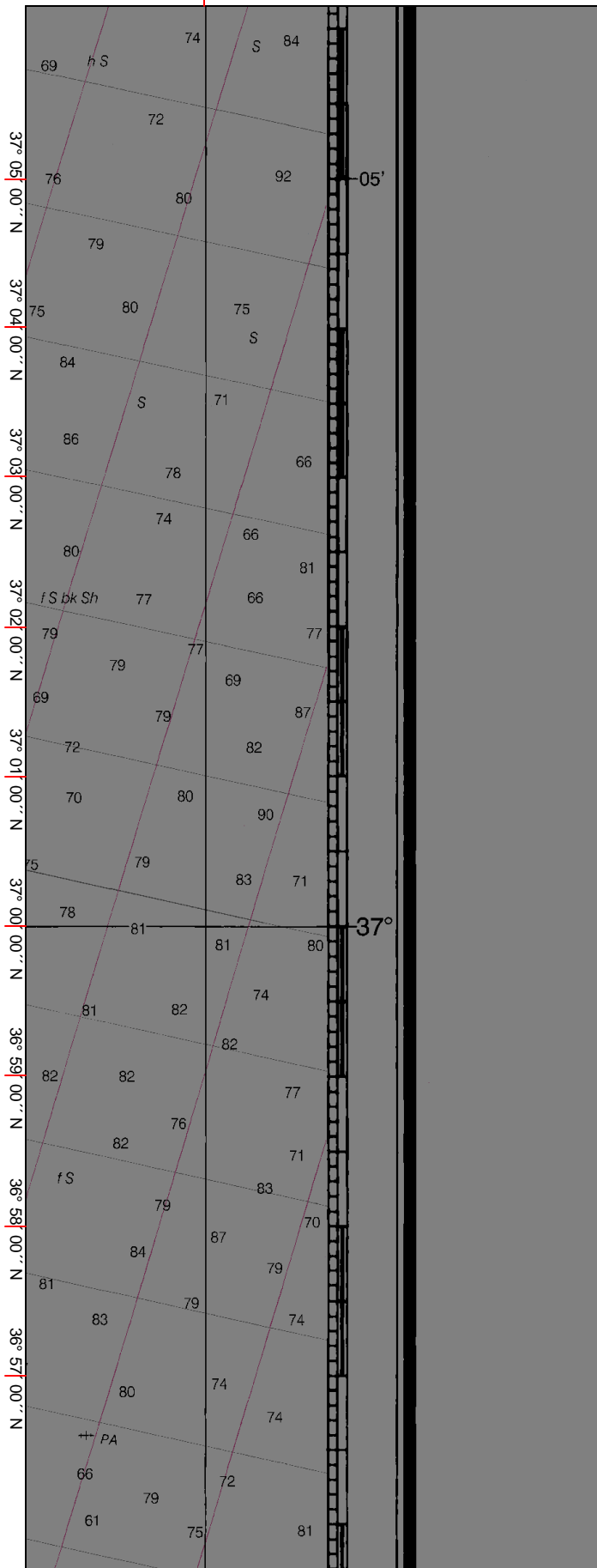




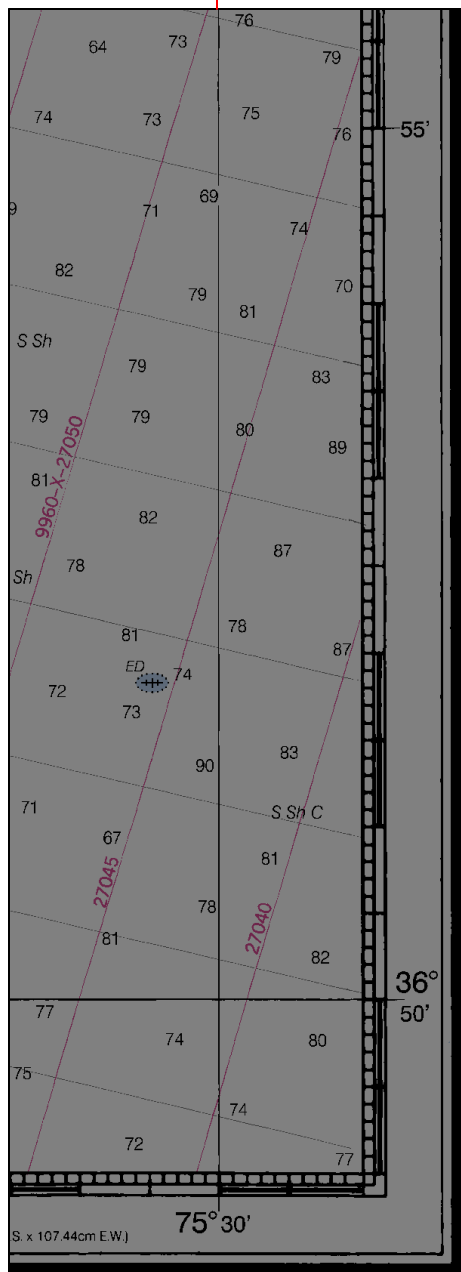
075° 30' 00'' W



075° 30' 00'' W



075° 30' 00'' W



12221

RAN-C OVERPRINTED

2-1-98 12221  
9/01/98



Chart Number: 12221\_1    Revision Number: 0    Cleared Date:    Date Printed: 08/06/2001    NOT FOR NAVIGATION

Page: E6