

Ocean Basemap

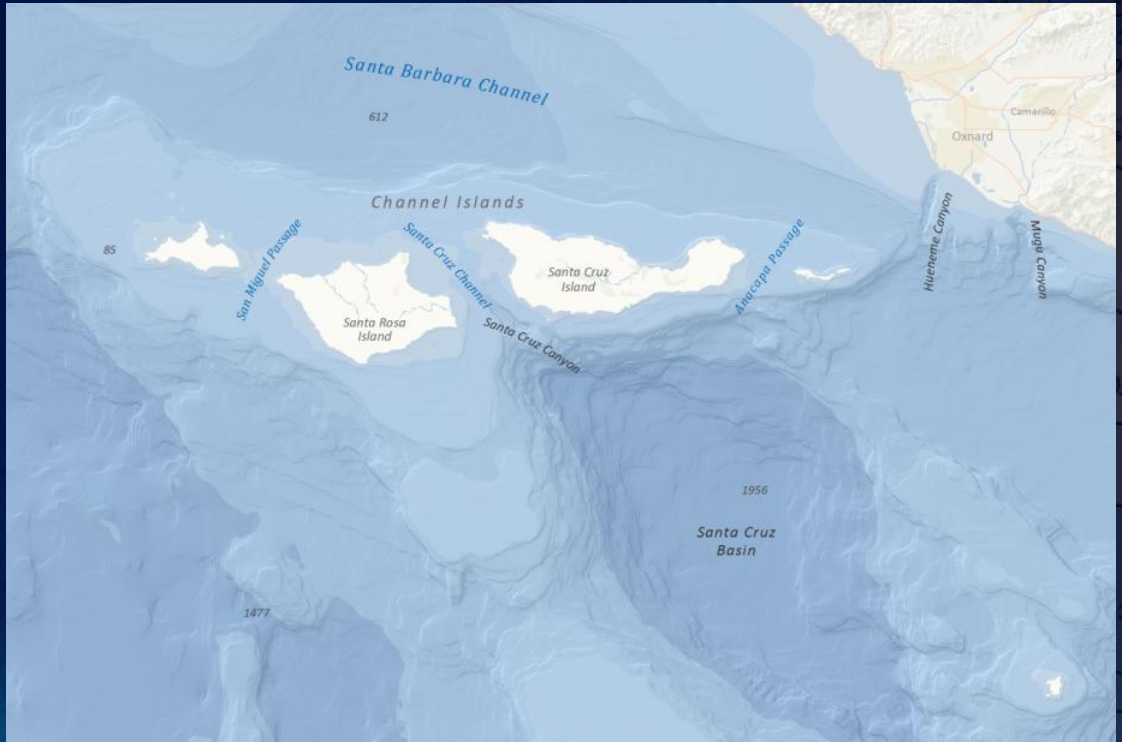
12.2011





Overview

- What is the Ocean Basemap
- How it was built
 - Architecture
 - Sources
- How it is used
- What's next
- Demo

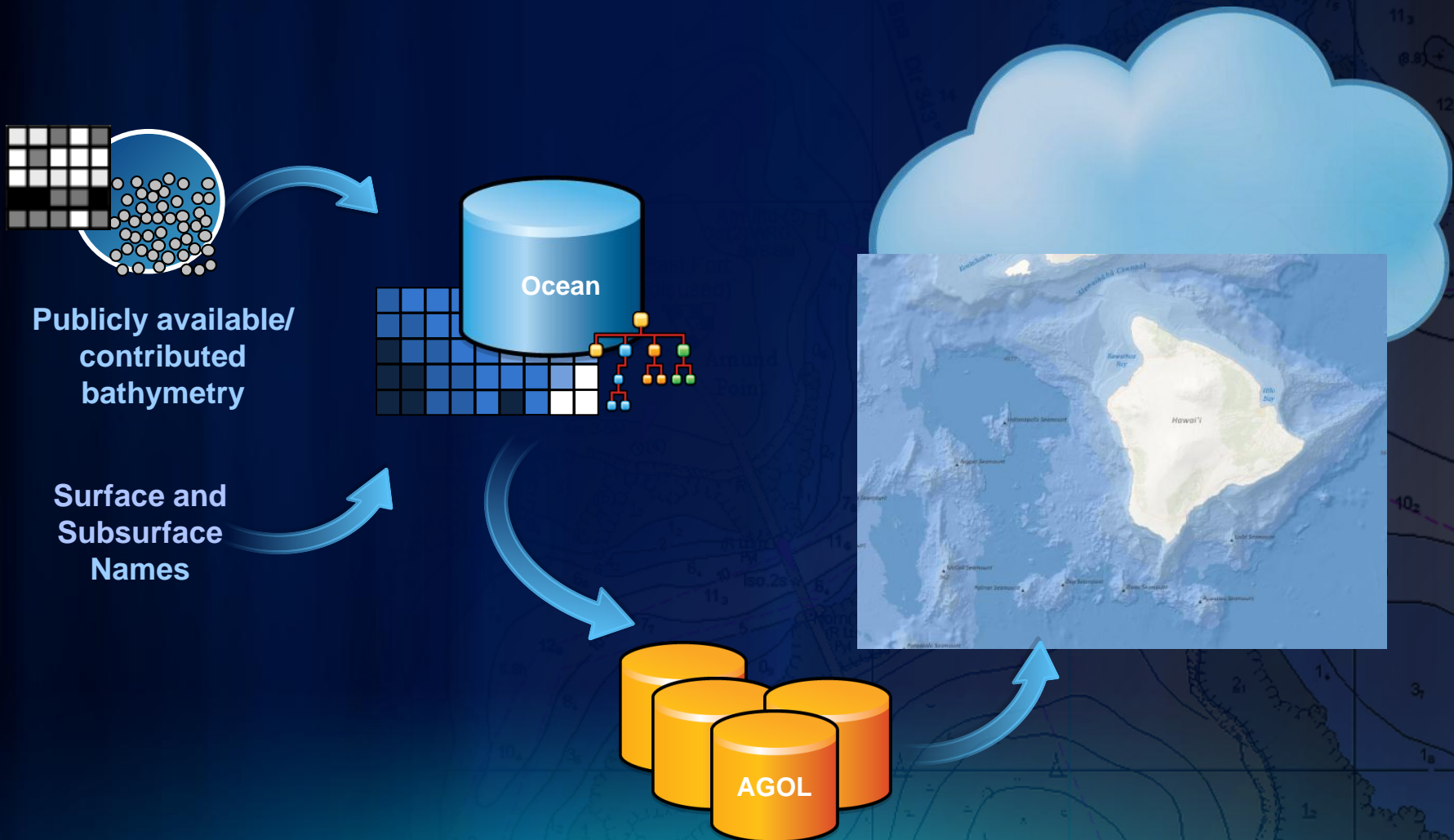


What is it

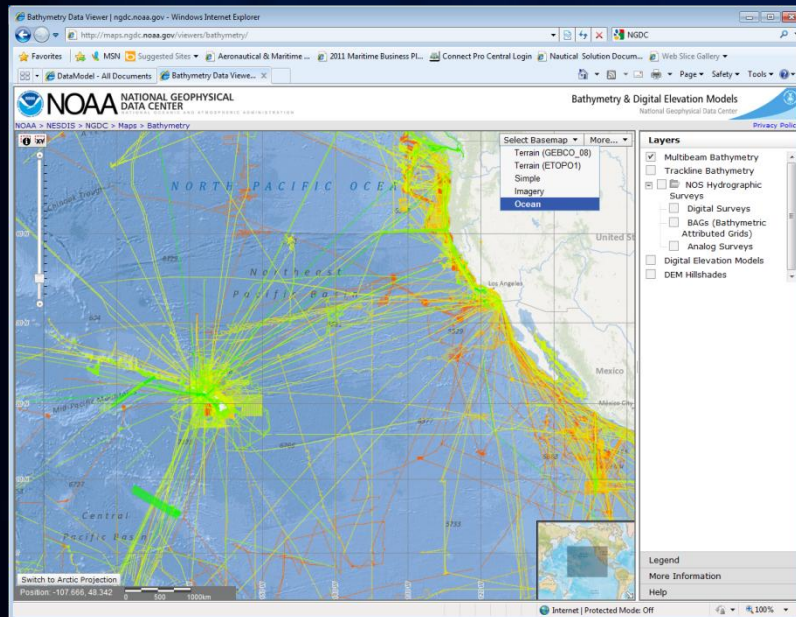
- **Cached map service**
 - Cached vs. Dynamic
 - Citation layer
- **Based on Bing maps tiling scheme**
- **“Basemap”**
- **1:1million**



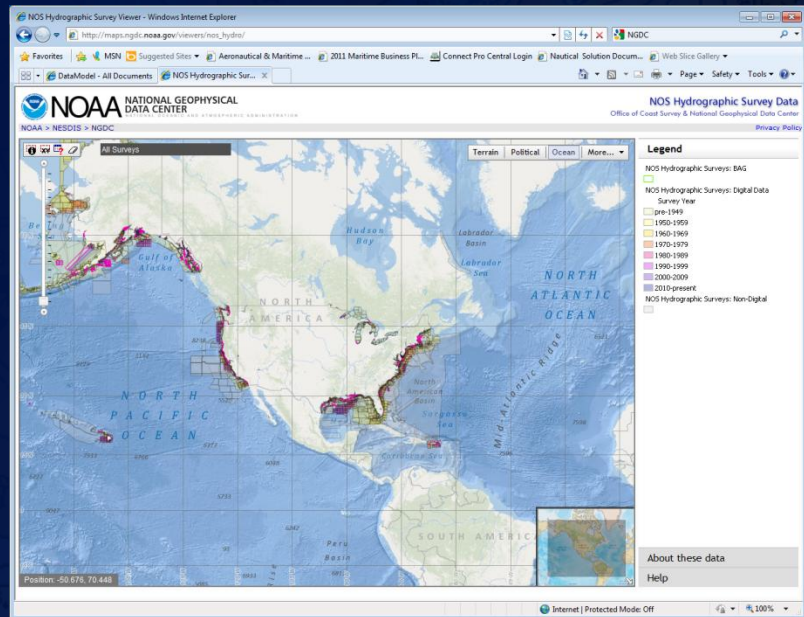
Ocean Basemap – Current Architecture



Usage



<http://maps.ngdc.noaa.gov/viewers/bathymetry/>

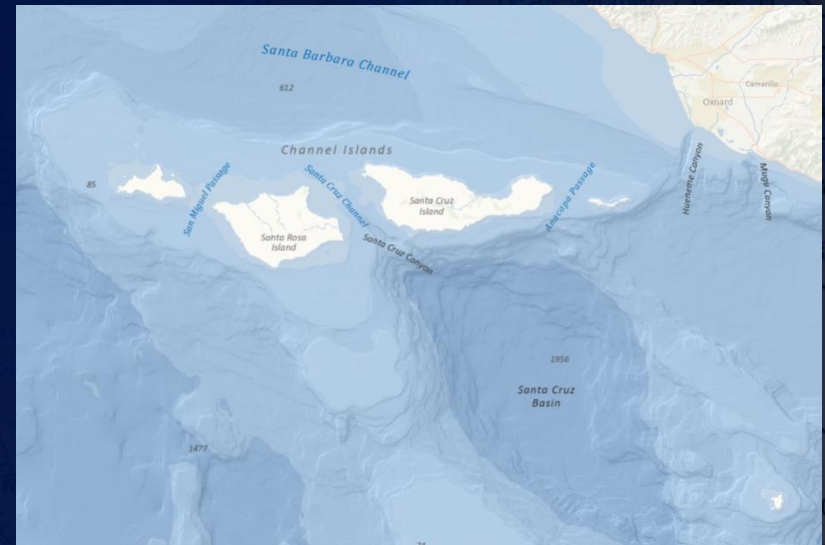


http://maps.ngdc.noaa.gov/viewers/nos_hydro/

Coming soon.... NOAA Multipurpose Marine Cadastre, Ocean Health Index, Sea Sketch

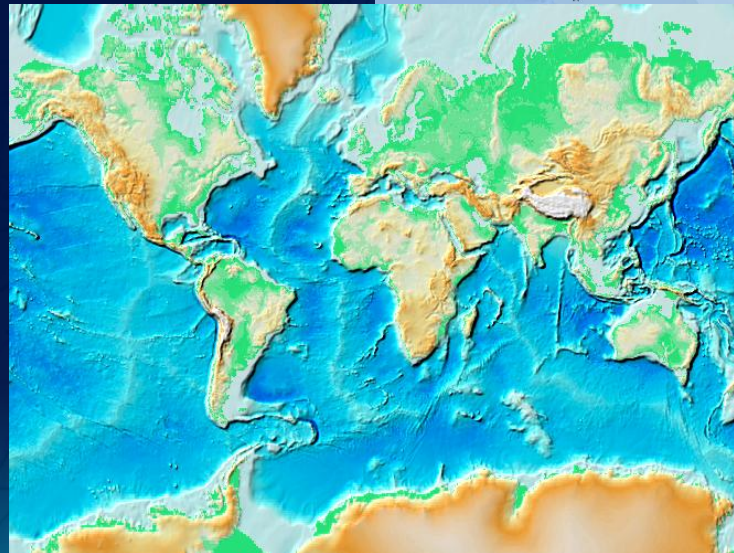
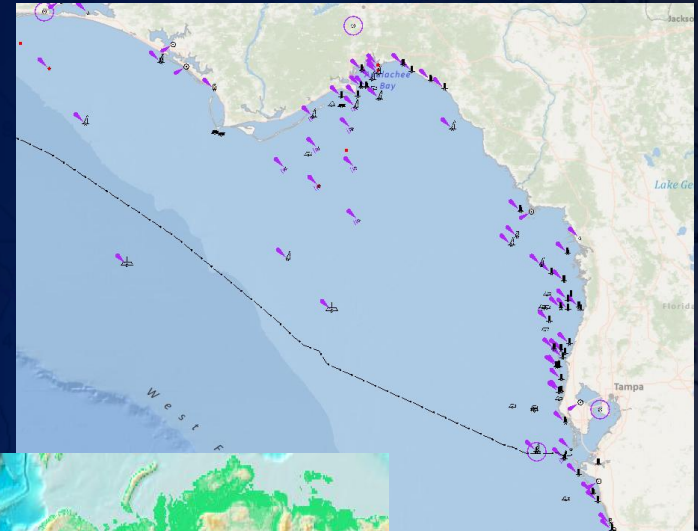
What's coming next....

- December Deployment of US down to 1:72K
- World down to 1:577K
- Next year:
 - Design of “Label-less Basemap”
 - More scales
 - More areas



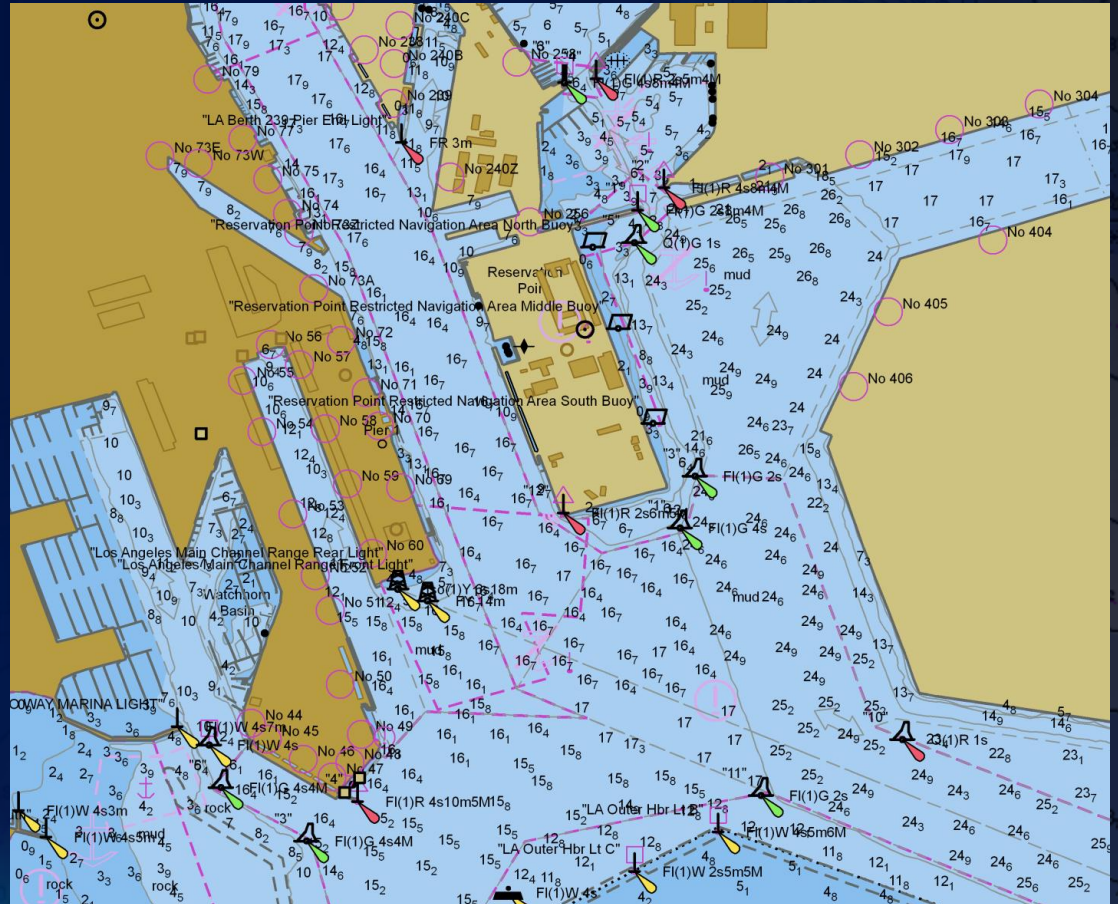
Ocean Content

- Operational Overlays
- Elevation Services
- Gazetteer Inclusion

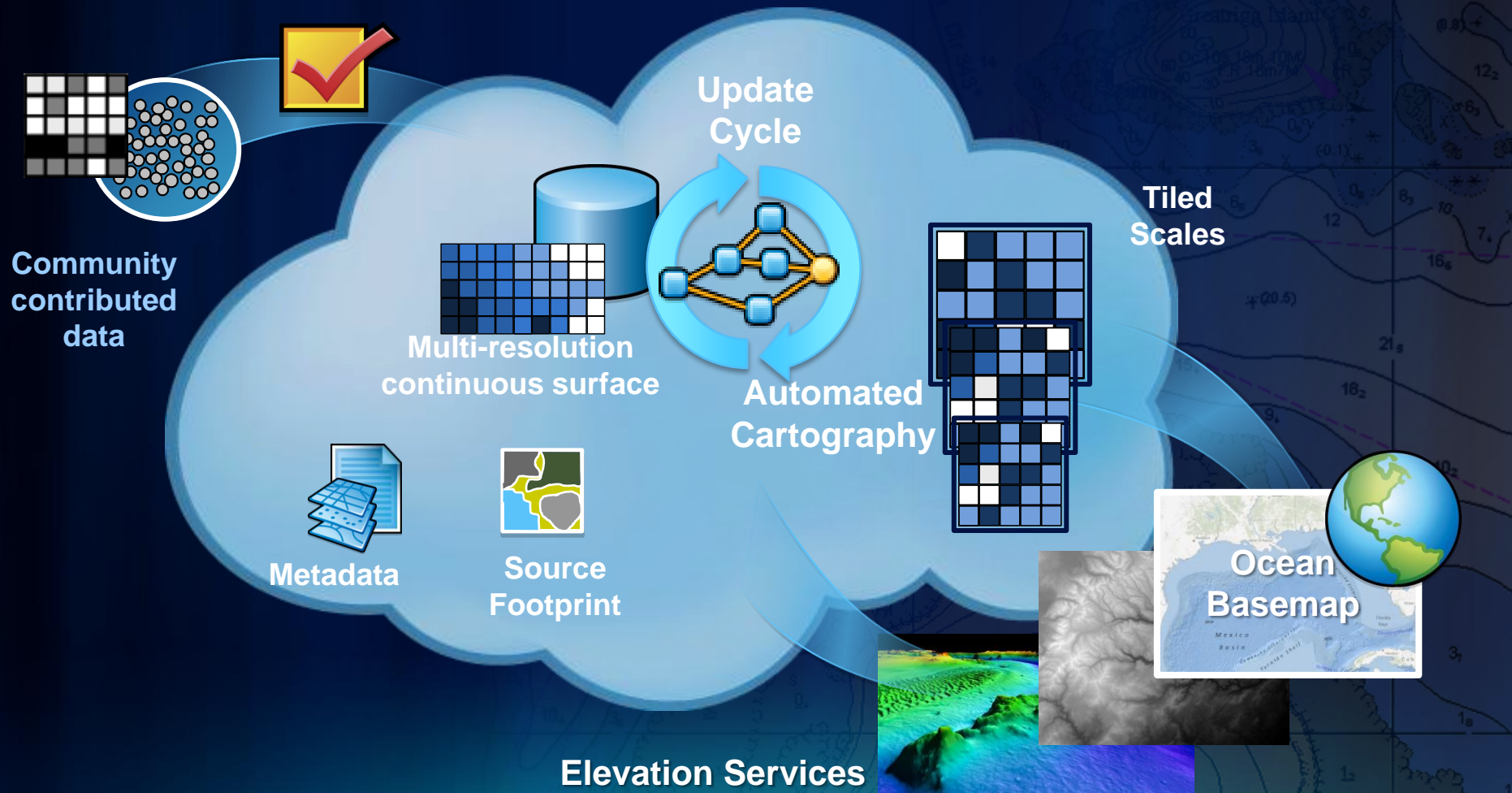


Ocean Content – ‘Maritime Basemap’

- ENC-based cached
- S-52 vs. INT1



Community-based Cloud Services



Demo

<http://www.arcgis.com/home/>

[Ocean Basemap Hyperlink](#)