



**PRIMAR**<sup>®</sup>

# Inspector Project

Norwegian Maritime Directorate  
Norwegian Hydrographic Service  
PRIMAR ENC Service



STATENS KARTVERK  
SJØ



**Sjøfartsdirektoratet**  
Norwegian Maritime Directorate



**PRIMAR**<sup>®</sup>  
Operated by the Norwegian Hydrographic Service

Operated by the Norwegian Hydrographic Service



# Mission

Enable port state control – access to the coverage information related to Norwegian (PRIMAR) ENC's as a aid to the planning of inspections.

# Project Goals



**PRIMAR**<sup>®</sup>

- Develop a web based service to give authorised access within the Norwegian Maritime Directorate (Sjøfartsdirektoratet) to relevant and accurate information on the use of ENC's, to simplify the inspection of vessels that use ENC and ECDIS systems.
- Develop experience and understanding that can be exported to other national services and other PRIMAR members.
- Offer training and documentation related to ENC's, PRIMAR services, Facts about Electronic Charts and Carriage Requirements, Descriptions and regulations including Paris MoU and how the relevant information can be used within the Norwegian Maritime Directorate
- The service is offered free to all cooperating HO's and their national authorities

# Project timeline

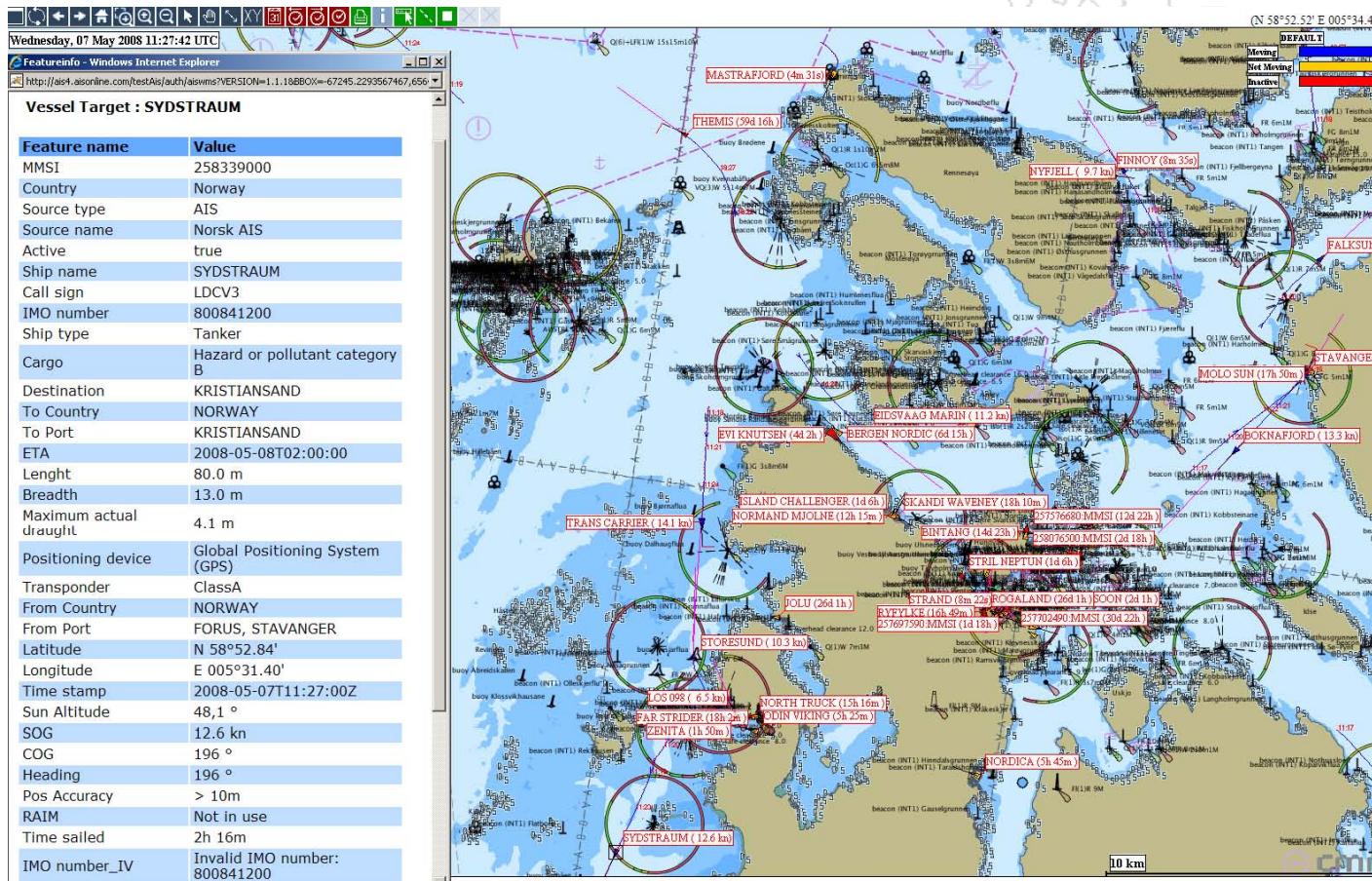


- March-May 2008.
  - Initial project discussion and framework developed with port state officers from the Stavanger office and other key stakeholders.
  - Initial testing, feedback and additional enhancements to the services added.
- June-August 2008
  - Training courses held in with port state inspectors in Stavanger, Oslo and Bødo and further testing of the service
  - Further fine tuning and enhancements to the services.
  - Completion and project signoff
- September 2008
  - Project completes and service becomes operational – free of cost to national authorities
- Next stage
  - Cooperating HO's have shown interest in the results of the project and are looking to impliment the service themselves.

# Typical AIS view of vessels



PRIMAR®

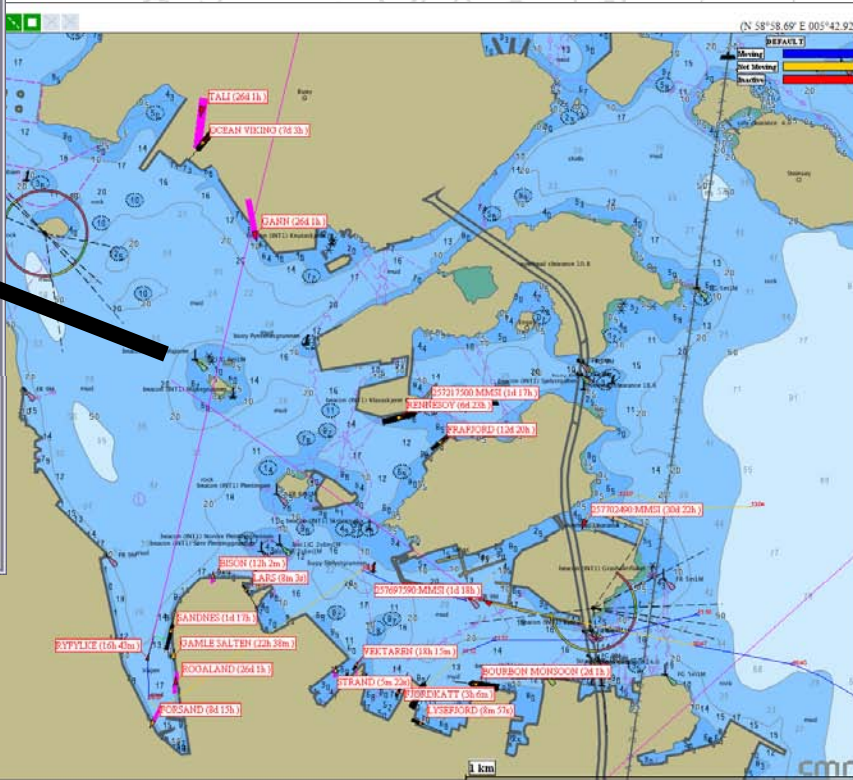
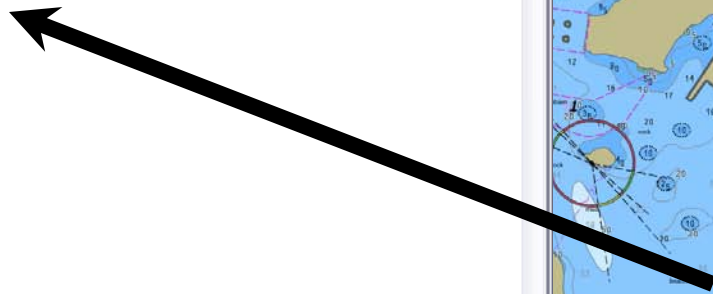


Operated by the Norwegian Hydrographic Service

# Export all AIS targets to file



```
Stavangerhavn_export.tsv - Notepad
File Edit Format View Help
imo number
8506024
9106431
9334296
9364021
6721151
7203699
9190274
9165877
8119601
7640213
```



Sun Altitude	11,6 °
SOG	.7 kn
Pos Accuracy	> 10m
RAIM	Not in use
Diff time pos - static	45,4 min
Maximum actual draught	is missing
Safe Sea Net	Safe Sea Net(MMSI_NR)
Google	Google(SHIP_NAME)
Ship info Callsign	Ship info Callsign (CALL_SIGN)
Ship info IMO	Ship info IMO(IMO_NR)

# Import into INSPECTOR



Advanced Search Import

## Import

File Name: Stavangerhavn\_export.tsv

Vessels Found					
Vessel Name	IMO Number	Call Sign	Primar Online	Status	Tasks
	IMO8506024			Not found	
	IMO9106431			Not found	
	IMO9334296			Not found	
	IMO9364021			Not found	
	IMO6721151			Not found	
Maria Soltind	IMO7203699			ENC CD	<a href="#">Details</a>
	IMO9190274			Not found	
IB Botnica	IMO9165877	OJAK	✓	PRIMAR Online	<a href="#">Details</a>
	IMO713334			Not found	
	IMO7640213			Not found	








# Advanced Search



 **INSPECTOR**  
ELECTRONIC CHART CENTRE PORT STATE CONTROL INSPECTION TOOL

Advanced Search Import


### Advanced Search

IMO Number:

Call Sign:

Vessel name:

Vessels Found						
Vessel Name	IMO Number	Call Sign	Primar Online	Status	Tasks	

© ECC AS 2008 | Developed by: [ECC AS](#) | Support: [support@ecc.as](mailto:support@ecc.as) | User: tungeso | IP Address: 10.20.30.101 | Data powered by: 

# Link to ECDIS systems



PRIMAR®



Advanced Search Import

## Vessel Details

### Test Vessel Online

PRIMAR Online

Distributor: PRIMAR Internal  
E-mail: MarketMail@primar.org  
Owner: Primar Online  
IMO Number: IMO0123456  
Call Sign: Future  
Flag: Norway  
Primar Online:   
Last connected: 12:16 12.06.07  
Tonnage: Not a Vessel  
Category: Passenger Vessel  
Contact: Wiz Kid  
E-mail: wizkid@now.com  
Phone: 99988877

**Installed ECDIS** ⓘ

**Latest released PRIMAR CD**

Current Base CD: (week/year) 26/2008  
Current Update CD: (week/year) 34/2008

**ENC Usagebands**

- Overview
- General
- Coastal
- Approach
- Harbour
- Berthing

**Coverage**

- Show Vessel Coverage
- Show Missing Coverage

**Options**

- Highlight expire cells

**Information**

The usagebands are used for the different compilation scales.

### + ENC's on Subscription



**PRIMAR**<sup>®</sup>

Thank you.

Peter.Scott@primar.org

Operated by the Norwegian Hydrographic Service