

## NATIONAL REPORT OF LITHUANIA

### Executive summary

This report summarizes the activities of Lithuanian Hydrographic Office since last BSHC 12<sup>th</sup> Conference in 2007.

### 1. Hydrographic Office / Service

There were small internal structural changes in Lithuanian Maritime Safety Administration (LMSA). Earlier Lighthouses and Aids to Navigation Division with its' two Services i.e. Hydrographic Service and Lighthouses and Aids to Navigation Service was reorganized into one division – Hydrographic and Aids to Navigation Division (HAtnD). The functions of the Division and staff remained the same. Also from 01st January 2009 Maritime Rescue Coordination Centre (MRCC) with its functions will be separated from LMSA and passed to Lithuanian Navy.

Ministry of Transport and Communications is the founder of LMSA. The institution is funded only from state budget.

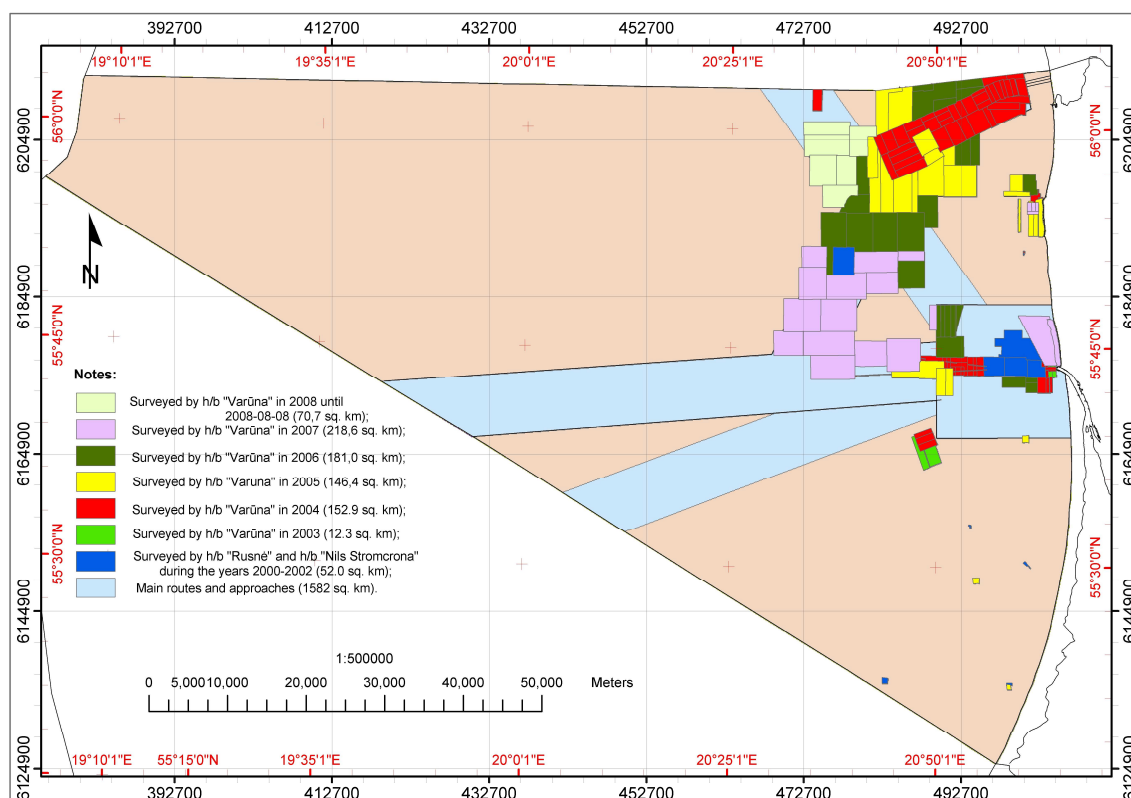
LMSA operating procedures are certified according to ISO 9001:2000 management system standard.

### 2. Surveys

For hydrographic surveying HAtnD has a 20 m long catamaran type survey vessel “VARŪNA”. It is equipped with modern ELAC's multibeam echosounder “SeaBeam 1185”.

All surveys are conducted in priority areas i.e. main shipping routes and approaches according to HELCOM resurvey plan.

Nautical surveying is carried out according to the IHO S-44 standard and the data is used in nautical charting.



In **2007** there were surveyed **218,6 km<sup>2</sup>** (see fig.).

In **2008** until 01st August 2008 there were surveyed **70,7 km<sup>2</sup>** (see fig.).

### 3. New charts & updates:

#### ENCs

Lithuanian waters are covered by three ENCs in three navigational purpose bands:

Navigational purpose	Chart No.
<i>General</i>	LT382001
<i>Approach</i>	LT562510
<i>Harbour</i>	LT560710

Three more ENCs (2 coastal and 1 approach) are still in preparation.

#### Chart Distribution :

Ministry of Transport has approved main LMSA documents for charts distribution. Next step Lithuanian Government should approve the schema of taxes for chart distribution.

#### RNCs

RNCs are not produced.

#### INT charts

INT charts are not produced.

#### National paper charts

Paper charts are produced from the same database as ENCs. Three paper charts are produced and three more are in preparation.

### 4. New publications & updates:

#### New Publications

In 2008 new version of "List of Lithuanian aids to navigation" was issued.

#### Updated Publications

In 2007 publication Notices to Mariners started and is issued on a quarterly basis.

#### Means of delivery

All publications can be found in digital form on the web page [www.msa.lt](http://www.msa.lt)

### 5. MSI

#### Existing infrastructure for transmission.

National GMDSS VHF network along coastline for local Navigational Warnings. Service is provided by MRCC Klaipeda on VHF in Lithuanian and English.

NAVAREA 1 Baltic sea sub area Co-ordinator Sweden is responsible for NAVTEX Service over Lithuanian waters and messages are transmitted by Swedish transmitters.

All navigational warnings are also published and can be found online on the web page [www.msa.lt](http://www.msa.lt)

#### New infrastructure in accordance with GMDSS Master Plan

GMDSS network covering areas A1 and A2. No new construction during last Year.

### 6. S-55

See Annex 1

## **7. Capacity Building**

### **Offer of or demand for Capacity Building**

Nothing to report

### **Training received, needed, offered**

Training courses to improve qualification would be desirable for surveyors and cartographers. Training for new employees will be required in the future.

### **Status of national, bilateral, multilateral or regional development projects with hydrographic component**

Bilateral arrangement agreement possibility with German Hydrographic Office is under evaluation.

## **8. Oceanographic activities**

No oceanographic activities.

## **9. Other activities**

### **Participation in IHO Working Groups**

Nothing to report

### **Meteorological data collection**

None

### **Geospatial studies**

Cooperation with involved institutions to prepare for INSPIRE Directive

### Annex 1 Basic Data

Maritime Nation/Area	Nation or Area Code	Region ID	Nation or Area (Nor A)	EEZ (sq km x 1000)	Length of Coastline (km)	Data for S-55 Edition No.	Latest Update	IHO Member State
Lithuania	LT	EU	N	4.573	99	1	Aug-08	N

### Annex 2 Hydrographic Resources

Maritime Nation/Area	Hydrographic Surveying Vessels				Hydr. Staff		Positioning Methods		
	> 100 m	50 m... 100 m	25 m... 50 m	<25 m	Specialists	Assistants	Long > 40 km	Medium 5-40 km	Short Range
Lithuania				1	9	0	DGPS	DGPS	DGPS

### Annex 3 Status of Hydrographic\_Surveys

Maritime Nation/Area	Data	State of Hydrography d<50m			State of Hydrography 50m<d<200m			State of Hydrography d>200m		
		% adequate	% resurvey	% unsurveyed	% adequate	% resurvey	% unsurveyed	% adequate	% resurvey	% unsurveyed
Lithuania	Y	28	2	0	0	0	0	N/A	N/A	N/A

