

**Table of MSRs, base/site calls, usage category, and current survey category**

**Note:** In the tables below, high priority surveys have been emphasized in **yellow**. Indications of planned surveys appear in **red**. Indications of surveys completed appear in **blue**.

**I. ANTARCTIC PENINSULA**

**Categories**

| Category | Usage      |
|----------|------------|
| A        | Frequent   |
| B        | Regular    |
| C        | Infrequent |

| Category | Current survey status                                  |
|----------|--|
| A        | Adequately surveyed                                    |
| B        | Requires re-survey at larger scale or to S-44 standard |
| C        | Has not been systematically surveyed/Unsurveyed        |

**Main corridors (see diagram on last page for MSR references)**

| MSR * | Name                               | Usage category | Survey category | Notes and INT chart coverage. Published and proposed.   |
|-------|------------------------------------|----------------|-----------------|---|
| 1     | James Ross Island circular route   | B+C            | A + C           | Prince Gustav Channel & Eastern corridor 55% surveyed. 45% unsurveyed. <i>Blocks surveyed by UK 2005-07. Blocks planned by UK for future seasons.</i> INT 9153          |
| 2     | Joinville Island circular route    | A+B            | A + C           | 45% surveyed (Antarctic Sound), 55% unsurveyed. <i>Blocks surveyed by UK 2005-07 and Uruguay &amp; Venezuela 2008. Blocks planned by UK for future seasons</i> INT 9154 |
| 3     | Orleans Strait to Antarctic Sound  | B              | B + C           | INT 9155  |
| 4     | Gerlache strait                    | A              | A + C           | 96% surveyed. INT 9156 & 9157 <i>Blocks surveyed by Chile 2010, 2011 &amp; UK 2005-07 also Flandres Bay 35% surveyed</i>  |
| 5     | Bismarck Strait                    | A+B            | A + B           | Approaches to Palmer Station and Port Lockroy. INT 9158. <i>Block surveyed by UK 2005-06, 2011 &amp; Chile 2010, 2011</i>   |
| 6     | Lemaire Channel                    | A              | A+B             | Petermann Is, Pleneau Is, Argentine Is, Yalour Is. 65% surveyed. INT 9106. <i>Block surveyed by UK 2005-06</i>  |
| 7     | Grandidier Channel                 | A+B            | B               | INT 9158 & 9159   |
| 8     | Cape Garcia to Jagged Island       | B              | C               | INT 9159  |
| 9     | Crystal Sound                      | B              | B               | Numerous reports of uncharted rocks. INT 9160   |
| 10    | Liard Island to Rothera            | B              | C               | INT 9161, 9108 AND 9163   |
| 11    | Marquerite Bay                     | C              | B + C           | INT 9163 & 9164   |
| 12    | Woodfield Channel                  | C              | B               | INT 9163  |
| 13    | Woodfield Channel to Matha Strait  | B              | C               | INT 9162 & 9160   |
| 13a   | Northern transit from Adelaide Is. | C              | C               | INT 9162  |
| 14    | Matha Strait to Hugo Island        | B              | C               | INT 9160, 9159 & 9158   |
| 15    | Exit fom melchior Islands          | B              | B + C           | INT 9156, 9157 & 9158   |

\* MSR = Maritime Shipping Route. The figures / letters in this column are shown on the MSR diagram which is on the last page.

|     |                                     |     |       |  |
|-----|-------------------------------------|-----|-------|--|
| 16  | Deception Island to Antarctic Sound | B   | B + C | INT 9151, 9152, 9154, & 9155. <i>Blocks planned by UK for future seasons</i>   |
| 17  | South Shetlands MSR                 | A   | A+C   | INT 9151. SW corridor surveyed by UK, Livingstone Island to Penguin Island complete. <i>Blocks surveyed by UK 2005-11 and Brazil 2007-08</i> |
| 17A | Deception Island circular route     | A   | A     | INT 9120 Deception Island circular route 100% complete. <i>Blocks surveyed by UK in 2005-08</i>  |
| 18  | Elephant Island MSR                 | A+C | A+C   | INT 9150 <i>Blocks surveyed by Brazil 2006</i>   |
| 19  | Elephant Island to KGI              | A   | C     | INT 9150, INT 9151 <i>Blocks surveyed by Brazil 2005</i>   |
| 20  | Deception Is to Brabant Island      | A   | C     | INT 9120, INT 9155, 9156, 9157 <i>Blocks surveyed by UK 2005-06</i>  |
| 21  | Elephant Islands to Danger Islands  | B   | C     | INT 9150, 9154 & 9170  |
| 22  | Elephant Island to Antarctic Sound  | B   | B     | INT 9150, 9151 & 9154  |

## Branch corridors and approaches

| MSR | Name                              | Usage category | Survey category | Notes and INT chart coverage. Published and proposed  |
|-----|-----------------------------------|----------------|-----------------|---|
| A   | Marambio                          | B              | C               | INT 9100  |
| B   | Duse Bay and Eagle Island         | B              | C               | Includes Crystal Hill. INT 9154   |
| C   | Paulet Island                     | A              | A + C           | 50% surveyed, remaining area top of UKHO priority. INT 9112 <i>Blocks surveyed by UK 2005-06</i>  |
| D   | Brown Bluff and Fridtjof Sound    | A              | A+C             | INT 9154 <i>Blocks surveyed by UK 2006-07</i> Approaches to Brown Bluff complete up to 50m contour  |
| E   | Hope Bay                          | A              | A               | INT 9101. 95% complete. <i>Blocks surveyed by UK 2006-07 and Uruguay 2008</i>   |
| F   | Gourdin Island and Siffrey Point  | B              | C               | INT 9154  |
| G   | Bernado O' Higgins and approaches | C              | C               | INT 9102  |
| H   | Curtiss Bay                       | C              | C               | INT 9155 & 9156   |
| I   | Hydrurga Rocks                    | B              | C               | INT 9156 & 9157   |
| J   | Alcock Island                     | C              | C               | INT 9156 & 9157   |
| K   | Portal Point                      | C              | A+C             | INT 9112 <i>Charlotte Bay surveyed by UK 85% complete.</i>  |
| L   | Enterprise Island                 | B              | C               | INT 9157  |
| M   | Melchior Islands and approaches   | A+C            | A+C             | INT 9157 <i>Blocks surveyed by UK 2005-06</i>   |
| N   | Errera Channel                    | A              | A+C             | Includes Cuverville Is, Danco Is and Ronge Is. INT 9103 70% complete. <i>Blocks surveyed by UK 2005-06</i>  |
| O   | Andvord Bay                       | A              | A+C             | Includes Neko Harbour. INT 9103. 70% complete. <i>Block surveyed by UK 2005-06</i>  |
| P   | Paradise Harbour                  | A              | A+B             | Almirante Station and Waterboat Point. INT 9104. Paradise Harbour 93%, Bryde Channel 90%, Furguson Channel 80%. <i>Blocks surveyed by UK 2007-08 &amp; Chile 2010, 2011</i> |
| Q   | Neumayer Channel and Port Lockroy | A              | A               | 100% complete. INT 9158 & 9104 <i>Blocks surveyed by UK 2005-06 &amp; Chile 2010, 2011</i>  |
| R   | Arthur harbour                    | B              | C               | INT 9105  |
| S   | French Passage                    | B              | B               | INT 9106  |
| T   | Prospect Point                    | B              | C               | INT 9107  |
| U   | Pendleton Strait                  | B              | B               | INT 9159  |
| V   | Matha Strait                      | B              | C               | INT 9160  |
| W   | Detaille Island and approaches    | C              | C               | INT 9161 Detaille Island now has Historic Monument status, and following restoration will receive increased vessel traffic.   |
| X   | Lallemand Fjord                   | C              | C               | INT 9161  |

| MSR | Name                                | Usage category | Survey category | Notes and INT chart coverage. Published and proposed   |
|-----|-------------------------------------|----------------|-----------------|--|
| Y   | Shumskiy Cove                       | C              | C               | INT 9108   |
| Z   | Rothera                             | B              | A               | BAS and RN vessels. INT 9109. 100% complete. <i>Blocks surveyed by UK 2007-08</i>  |
| Aa  | Avian Island                        | C              | B               | INT 9110   |
| Ab  | Approaches to Millerand Island      | C              | B               | INT 9111   |
| Ac  | Port Foster and Neptunes Bellows    | A              | A+B             | INT 9120 Port Foster and Whalers Bay 95% complete. Neptunes Bellows needs multibeam survey to position Ravn Rock, controlling danger in very narrow passage. <i>Blocks surveyed by UK 2005-08</i>                                |
| Ad  | South bay and Hannah Point          | A              | A               | INT 9121. <i>Block surveyed by UK in 2006-07</i>   |
| Ae  | McFarlane Strait                    | A              | A + C           | Half Moon Is cat A, Yankee Harbour 100%, McFarlane Strait 50%. INT 9121 & 9112. <i>Blocks surveyed by UK in 2005-07</i>  |
| Af  | English Strait                      | A              | A+B             | Aitcho Islands and Discovery Bay. INT 9122 & 9152. 75% complete. NE section still unsurveyed. <i>Blocks surveyed by UK in 2005-07, Ecuador in 2004 &amp; 2011 and Chile.</i>   |
| Ag  | Robert Point                        | C              | C               | INT 9151   |
| Ah  | Nelson Strait                       | C              | A+C             | INT 9151. 80% complete. <i>Block surveyed by UK in 2005-07, Blocks surveyed by Chile in 2005-08</i>  |
| Ai  | Maxwell Bay and approaches          | A              | A+C             | Ardley Cove, Marian Cove and Potter Cove. INT 9123. 80% complete. <i>Blocks surveyed by UK in 2005-07, Potter Cove surveyed by Argentina 2005-06, Uruguay 2008. Block planned by Brazil 2011</i>                                 |
| Aj  | Admiralty Bay                       | A              | A               | Artowski Station, Ferraz Station and Martel Inlet. INT 9125. <i>Block surveyed by UK in 2006-07, Blocks surveyed by Peru 2002-06, Block surveyed by Brazil 2007-08. Block planned by Peru 2009. Block planned by Brazil 2011</i> |
| Ak  | Penguin Island and approaches       | A              | A+C             | Endurance 2005 survey. INT 9151 <i>Approach channel surveyed by UK 2006, 50% complete. Block planned by Brazil 2011</i>  |
| Al  | Cape Lookout                        | B              | C               | INT 9112   |
| Am  | Point Wild                          | A              | C               | INT 9150   |
| An  | Cape Valentine                      | B              | C               | INT 9150   |
| Ao  | Danger Islands                      | C              | C               | INT 9154   |
| Ap  | Dundee Island                       | B              | A+C             | INT 9154 60% <i>Blocks surveyed by UK in 2005-07, Block surveyed by Argentina in 2005-07</i>   |
| Aq  | Herbert Sound                       | B              | A+C             | INT 9153. 90% complete. <i>Blocks surveyed by UK in 2005-07</i>  |
| Ar  | Historic Monument                   | B              | C               | INT 9153   |
| As  | Freud Passage                       | B              | C               | INT 9156 & 9157  |
| At  | Booth Is, Port Charcot & Pleneau Is | B              | C               | INT 9158   |
| Au  | Gunnel Channel                      | B              | C               | INT 9108 & 9161  |
| Av  | Pourqoi Pas Island                  | C              | C               | INT 9163 & 9161  |

## II. MAINLAND ANTARCTICA\*\*

### Main corridors

| MSR | Name                       | Usage category | Survey category | Notes and INT chart coverage. Published and proposed.  |
|-----|----------------------------|----------------|-----------------|--|
| 1   | Hobart to Macquarie Island | C              | A + B           | Annual re-supply station by Aurora Australis. Tourist vessels and fishing boats<br>Charts - Hobart AUS173 and 174<br>Macquarie Island – AUS604<br>Cape Darnley to Tasmania - INT 74 (AUS 4074)   |
| 2   | Hobart to Casey station    | C              | A + B           | Annual re-supply of station by Aurora Australis and other vessel plus occasional tourist vessels. Charts.<br>Hobart AUS173 and 174<br>Casey - INT9021 (AUS601)<br>Cape Darnley to Tasmania - INT 74 (AUS 4074)   |
| 3   | Hobart to Davis            | C              | A + B           | Annual re-supply of station by Aurora Australis and other vessel plus occasional tourist vessels<br>Charts -<br>Hobart AUS173 and 174<br>Davis – INT9032(AUS602)<br>Cape Darnley to Tasmania - INT 74 (AUS 4074)   |
| 4   | Hobart to Mawson           | C              | A+B             | Annual re-supply of station by Aurora Australis and other vessel plus occasional tourist vessels<br>Charts<br>Hobart AUS173 and 174<br>Mawson – AUS600<br>Cape Darnley to Tasmania - INT 74 (AUS 4074)<br>Magnet Bay to Cape Rouse – INT 9035 AUS449                     |
| 5   | Hobart to Heard Island     | C              | A+C             | Marine science voyage by Aurora Australis, customs patrol vessels plus occasional tourist and fishing vessels.<br>Charts<br>Hobart AUS173 and 174<br>Heard Island – AUS605<br>Cape Darnley to Tasmania - INT 74 (AUS 4074)<br>Magnet Bay to Cape Rouse – INT 9035 AUS449 |
| 6   | Fremantle to Heard Island  | C              | A+C             | Marine science voyage by Aurora Australis, customs patrol vessels plus occasional tourist and fishing vessels.   |
| 7   | Hobart to Commonwealth Bay | C              | A+C             | Occasional visits by Aurora Australis, Astrolabe and occasional tourist vessels<br>Charts - Hobart AUS173 and 174<br>Commonwealth Bay – INT 9014 AUS603  |
| 8   | Davis to Larsemann Hills   | C              | A+C             | Occasional visits by Aurora Australis, Chinese re-supply vessel Xue Long and Russian re-supply vessels.<br>No charts exist of the approaches to the Larsemann Hills<br>Sandjeford Bay to Cape Rundingen INT 9030<br>AUS 451  |
| 9   | Davis to Sansom Island     | C              | C               | No chart coverage except at small scale.<br>Scandjeford Bay to Cape Rundingen – INT 9030<br>AUS 451 scale 1:500,000. No chart exists on the approaches to Sansom Is.   |

\*\* Australian Antarctic Division Submission

| MSR | Name                                   | Usage category | Survey category | Notes and INT chart coverage. Published and proposed.  |
|-----|--|----------------|-----------------|--|
| 10  | Casey to Davis                         | C              | C               | Occasional use by Aurora Australis during re-supply voyages. Small scale Chart coverage only.<br>Approaches to Casey - INT 9021 (AUS601),<br>Mill Island to Cape Poinsett - INT 9020 (AUS454),<br>Cape Darnley to Tasmania - INT 74 (AUS4074),<br>Cape Rundingen to Cape Filchner - INT 9031 (AUS452)<br>Sandefjord Bay to Cape Rundingen - INT 9030 (AUS451)<br>Approaches to Davis Anchorage |
| 11  | Davis to Mawson                        | C              | C               | Annual resupply voyages. Small scale chart coverage only.<br>Approaches to Davis Anchorage - INT 9032 (AUS 602)<br>Sandefjord Bay to Cape Rundingen - INT 9030 (AUS451)<br>Cape Rouse to Sandefjord Bay – INT 9033 (AUS450)<br>Magnet Bay to Cape Rouse – INT 9035 (AUS449)<br>Approaches to Mawson – INT 9036 (AUS600)  |
| 12  | Fremantle to mawson                    | C              | A + C           | Occasional use by Aurora Australis for resupply voyages.<br>Fremantle AUS113, AUS112, AUS754, AUS334<br>Cape Leeuwin to Southeast Indian Ridge – INT 710 (AUS 4710)<br>Cape Darnley to Tasmania - INT 74 (AUS4074),<br>Approaches to Mawson – INT 9036 (AUS600)  |
| -   | Hobart and Fremantle to Southern Ocean | C              | A+C             | Marine science voyages   |

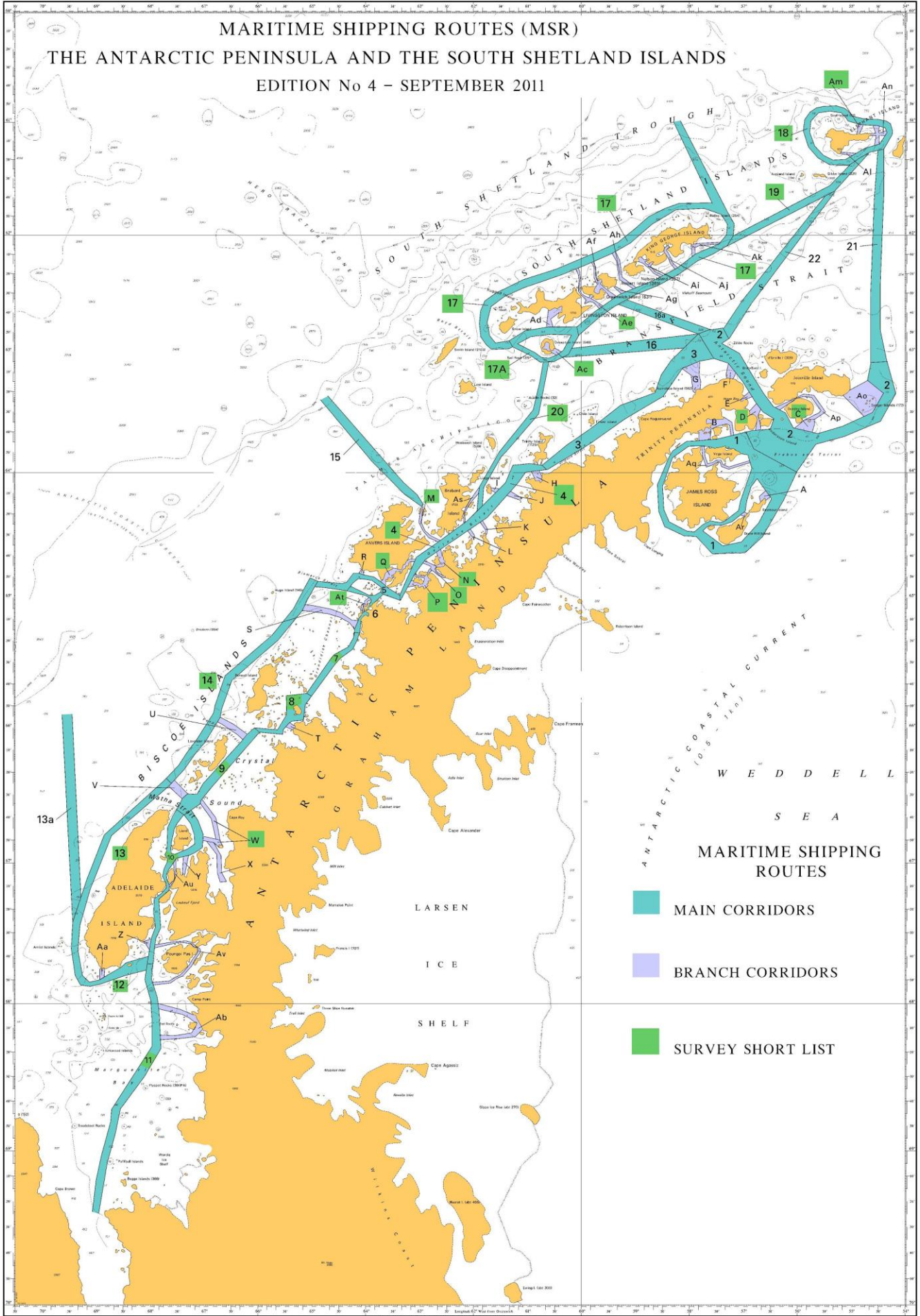
### Branch corridors and approaches

| MSR      | Name                            | Usage category | Survey category | Notes and INT chart coverage. Published and proposed  |
|----------|---------------------------------|----------------|-----------------|---|
|          | Macquarie Island                | C              | A+C             | AUS604  |
| A        | Casey                           | C              | A+C             | INT9021 (AUS601)  |
| B        | Davis                           | C              | A+C             | INT9032(AUS602)   |
| <b>C</b> | <b>Mawson</b>                   | <b>C</b>       | <b>A+C</b>      | <b>AUS600 – Proposed survey area Feb – Mar 2012</b>   |
| <b>D</b> | <b>Commonwealth Bay</b>         | <b>C</b>       | <b>C</b>        | <b>AUS603 - Proposed survey area Dec – Jan 2012</b>   |
| E        | Cape Darnley                    | C              | C               | Potentially shallow unsurveyed area north of Cape Darnley restricts passage of vessels proceeding west from Prydz Bay.<br>INT 9033 (AUS450)                                       |
| F        | Rouse Island                    | C              | C               | Infrequent visits. Potential anchorage / safe haven south of Davis Station for ships visiting Antarctic Stations in southern Prydz Bay.   |
| <b>8</b> | <b>Davis to Larsemann Hills</b> | <b>C</b>       | <b>A + C</b>    | <b>Occasional visits by Aurora Australis, Chinese re-supply vessel Xue Long and Russian re-supply vessels.</b><br><b>No charts exist of the approaches to the Larsemann Hills</b> |
| 9        | Davis to Sansom Island          | C              | C               | No chart coverage except at small scale Sandjeford Bay to Cape Rundingen – AUS452 scale 1:500,000. No charts exist on the approaches to Sansom Island                             |

|    |                 |   |   |  |
|----|-----------------|---|---|--|
| 10 | Casey to Davis  | C | C | <p>Occasional use by Aurora Australis during re-supply voyages. Small scale Chart coverage only.</p> <p>Approaches to Casey - INT 9021 (AUS601), Mill Island to Cape Poinsett - INT 9020 (AUS454), Cape Darnley to Tasmania - INT 74 (AUS4074), Cape Rundingen to Cape Filchner - INT 9031 (AUS452) Sandefjord Bay to Cape Rundingen - INT 9030 (AUS451) Approaches to Davis Anchorage - INT 9032 (AUS602)</p> |
| 11 | Davis to Mawson | C | C | <p>Annual resupply voyages. Small scale chart coverage only.</p> <p>Approaches to Davis Anchorage - INT 9032 (AUS 602) Sandefjord Bay to Cape Rundingen - INT 9030 (AUS451) Cape Rouse to Sandefjord Bay – INT 9033 (AUS450) Magnet Bay to Cape Rouse – INT 9035 (AUS449) Approaches to Mawson – INT 9036 (AUS600)</p>   |



MARITIME SHIPPING ROUTES (MSR)  
 THE ANTARCTIC PENINSULA AND THE SOUTH SHETLAND ISLANDS  
 EDITION No 4 – SEPTEMBER 2011



ANTARCTIC COASTAL CURRENT  
 W E D D E L L  
 S E A

MARITIME SHIPPING ROUTES

- MAIN CORRIDORS
- BRANCH CORRIDORS
- SURVEY SHORT LIST

