



Hydrographic Commission on Antarctica

National Report by

**UNITED KINGDOM**

# Survey and charting progress in Antarctica since last meeting (December 2013)

## ✦ New charts produced (INT, national, ENC)

UK have published 3 INT charts and corresponding ENCs since HCA13

## ✦ Areas surveyed

UK have surveyed in 3 areas since HCA13

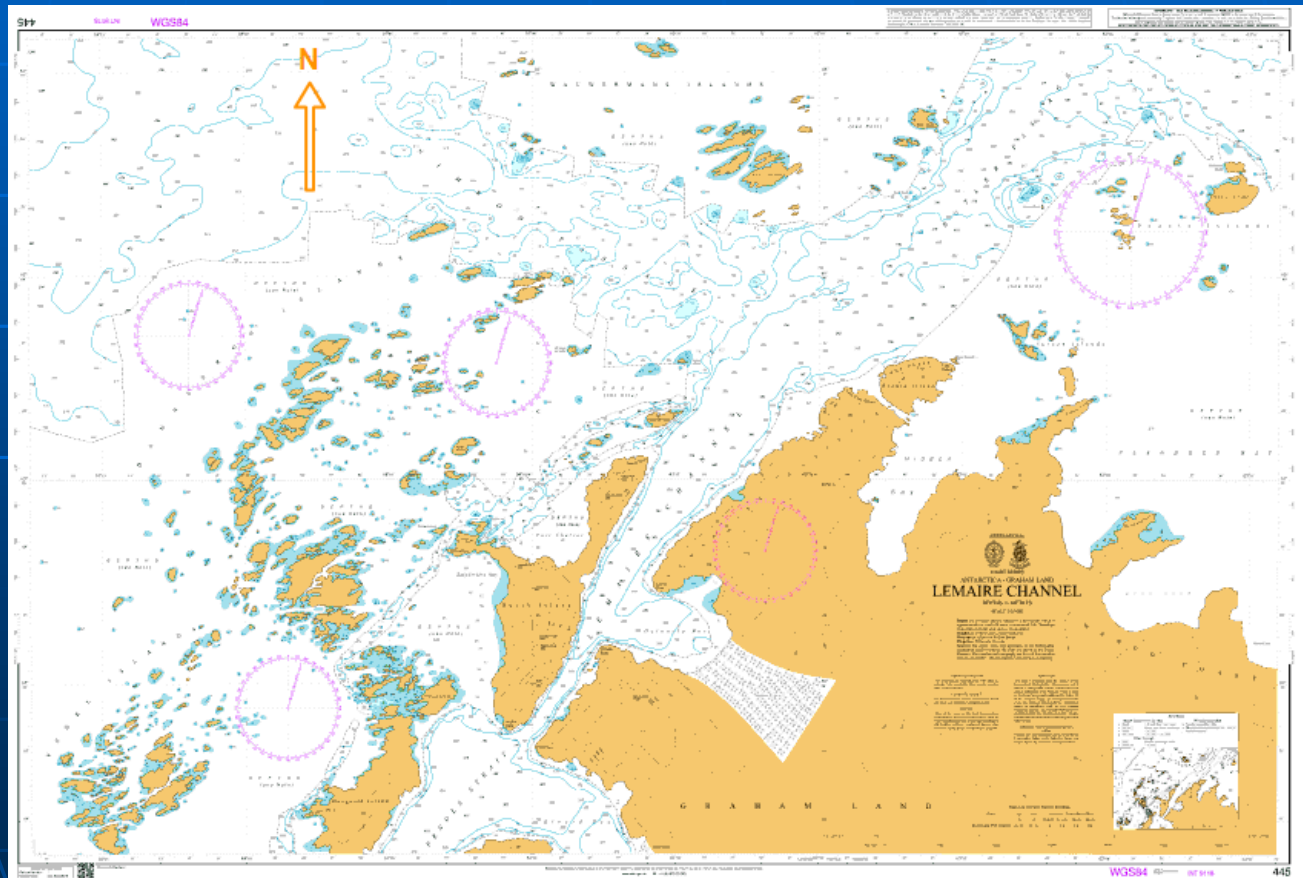
## ✦ Risk assessment studies

## ✦ Impact of Polar Code on your activities

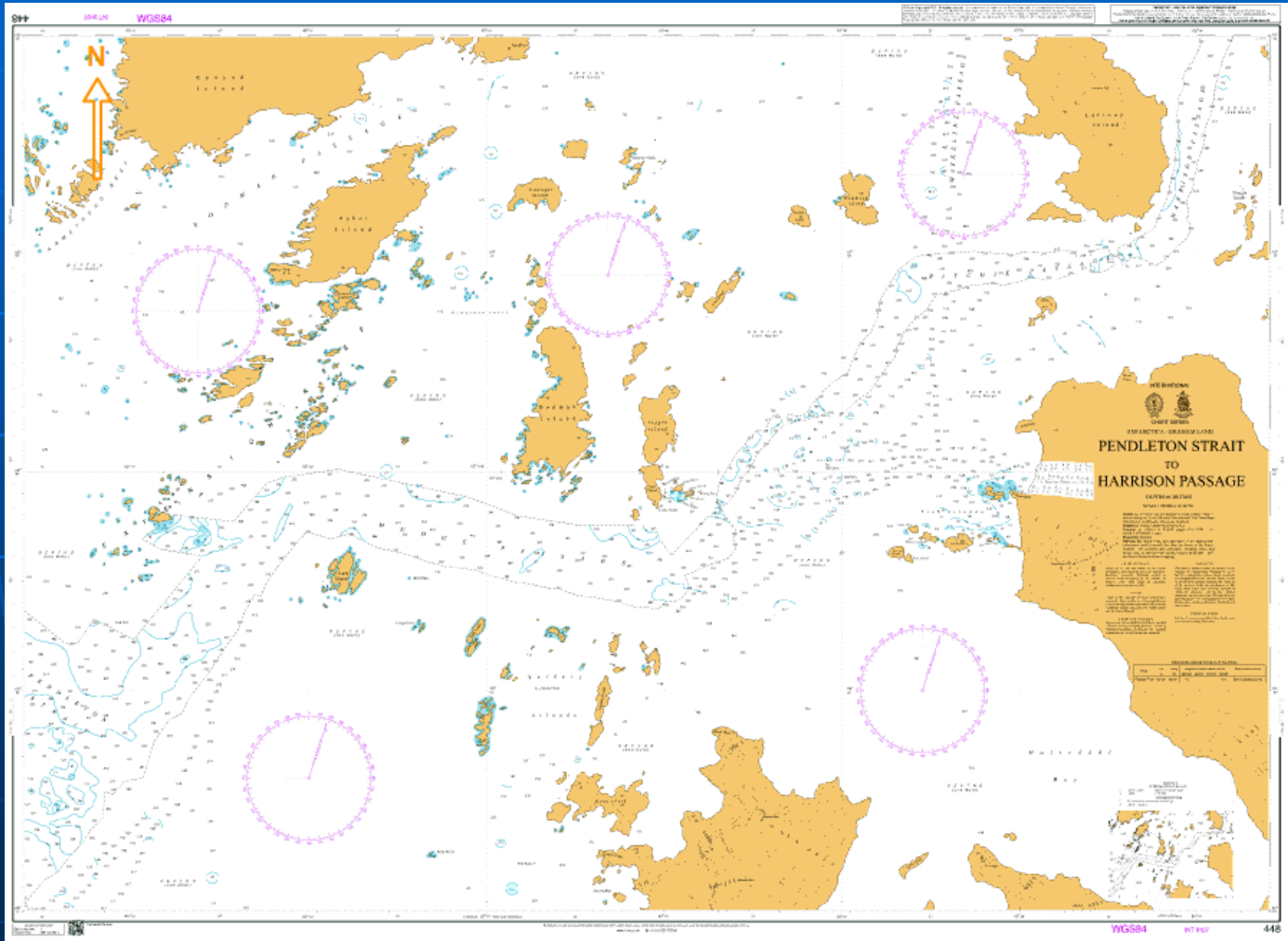


# New Charts & ENCs published by the UK since HCA13

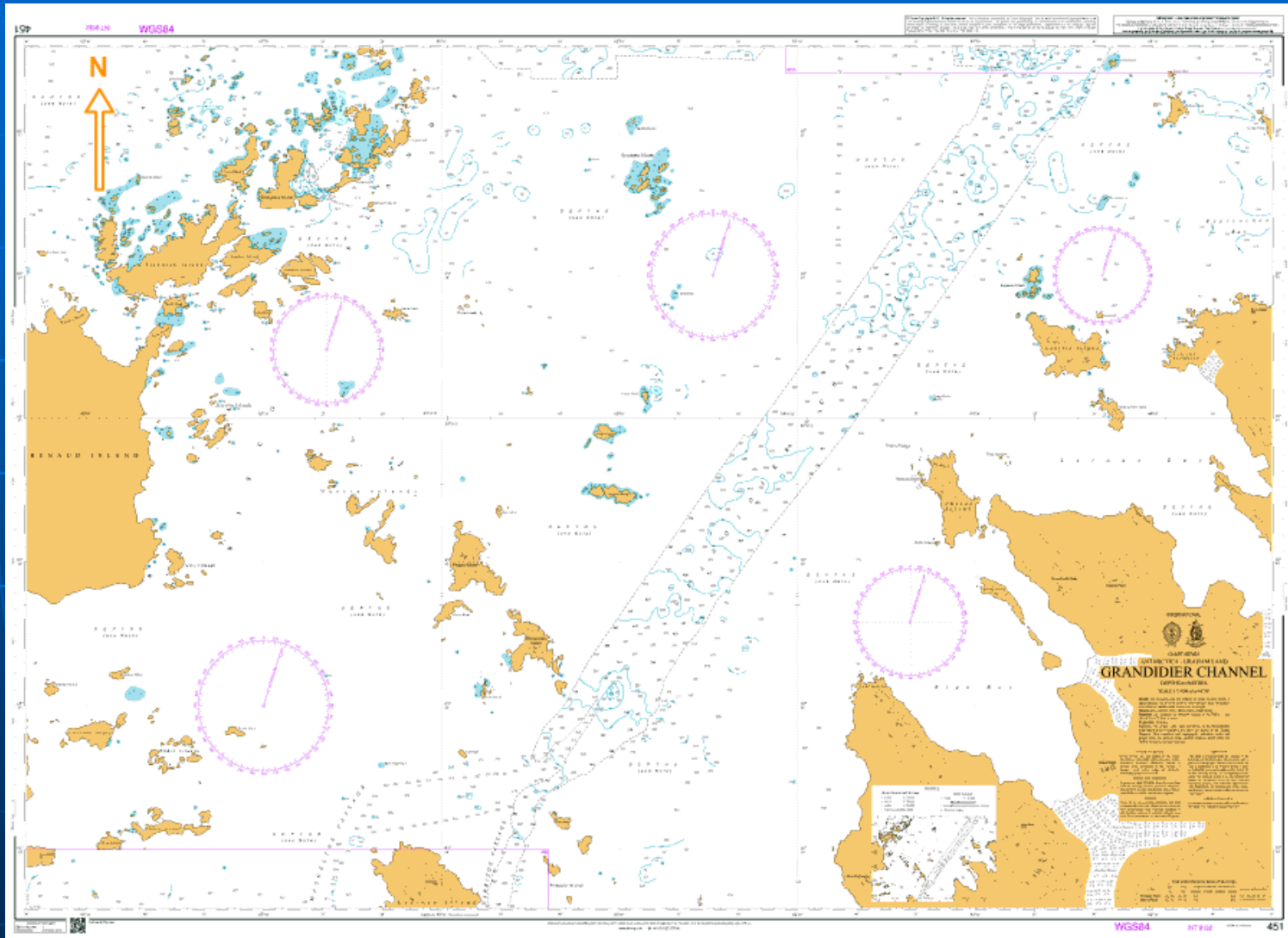
## INT9118 (BA445 & GB400445) Lemaire Channel - April 2015



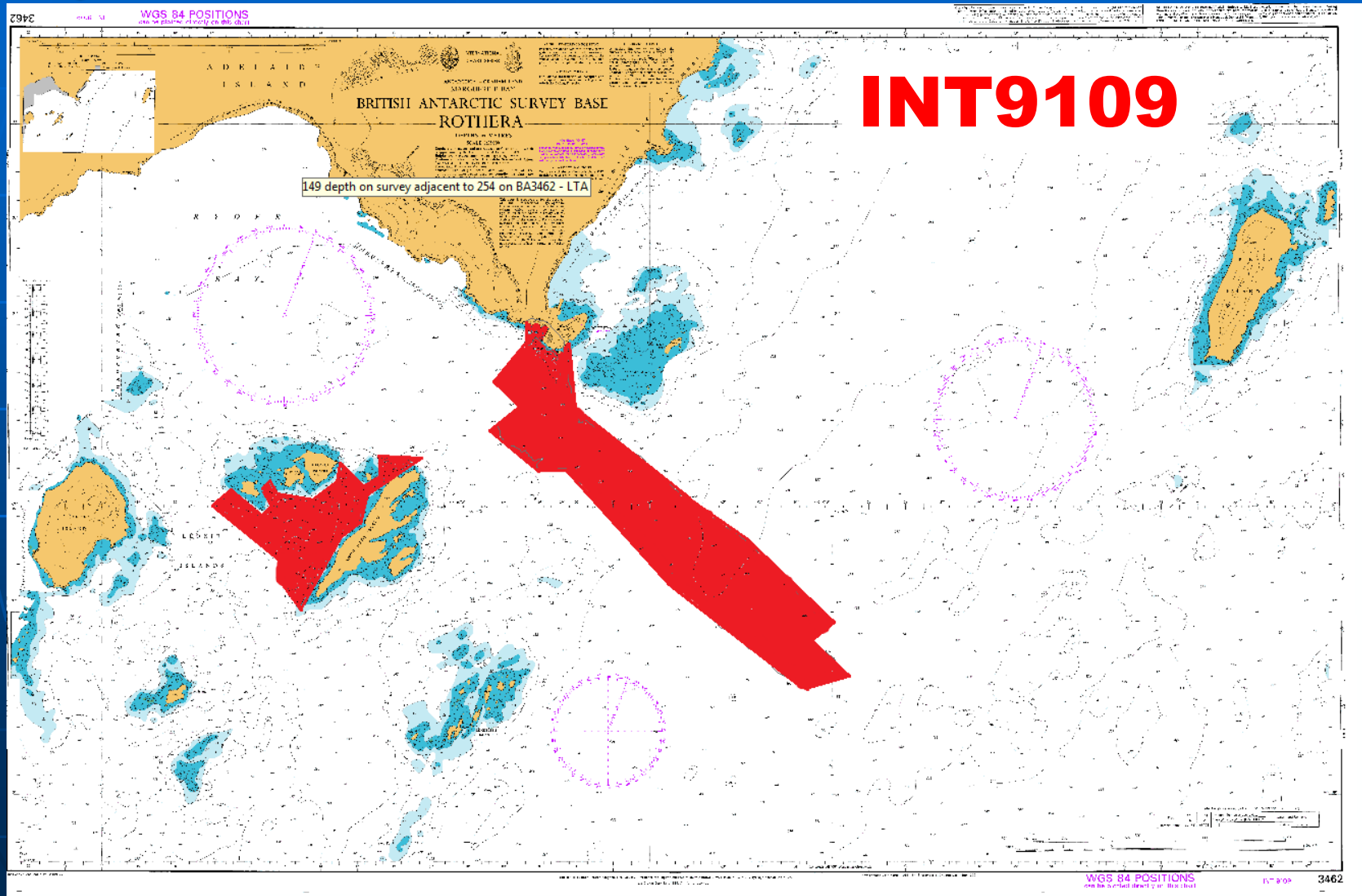
# INT9107 (BA448 & GB400448) Pendleton Strait to Harrison Passage - March 2015



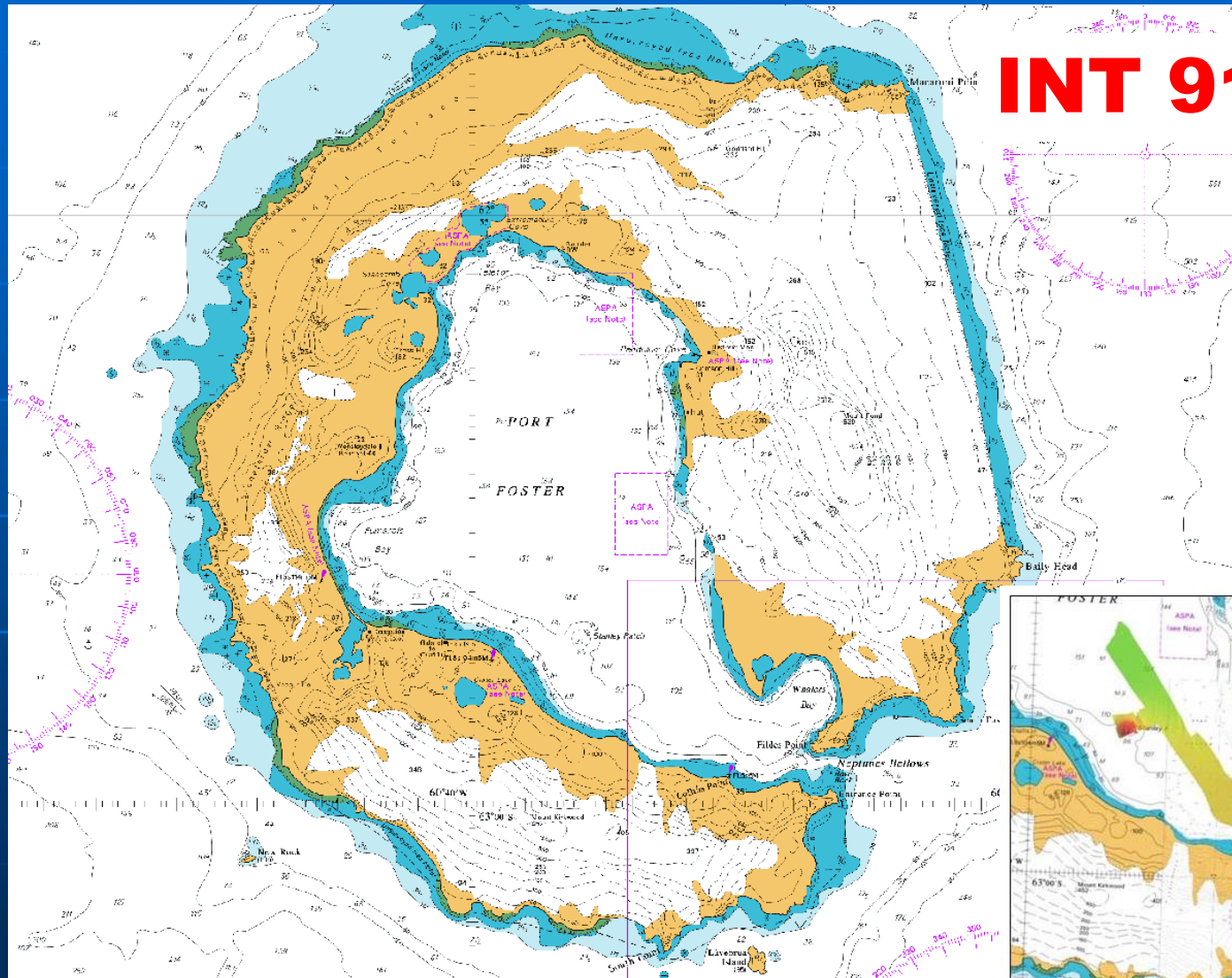
# INT9132 (BA451 & GB400451) Grandidier Channel - May 2015



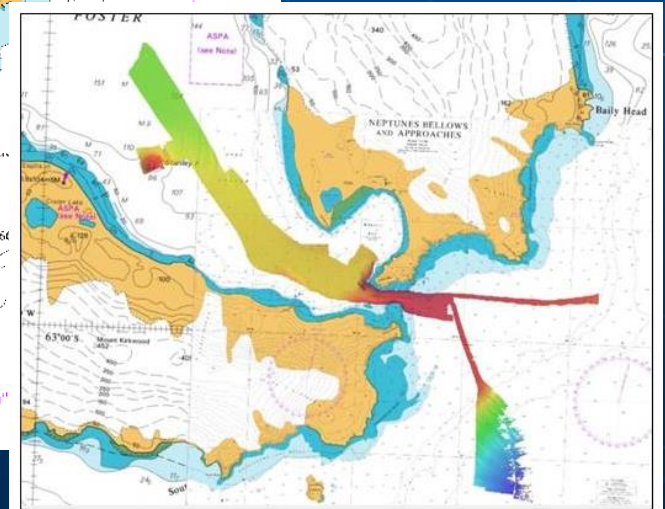
# Areas surveyed since HCA13 by HMS PROTECTOR



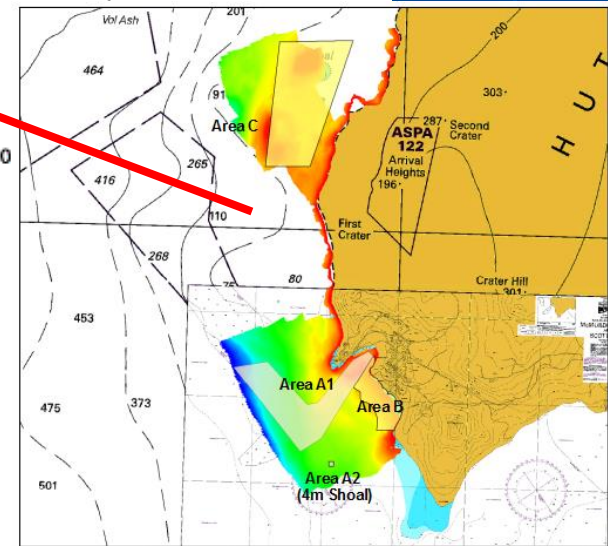
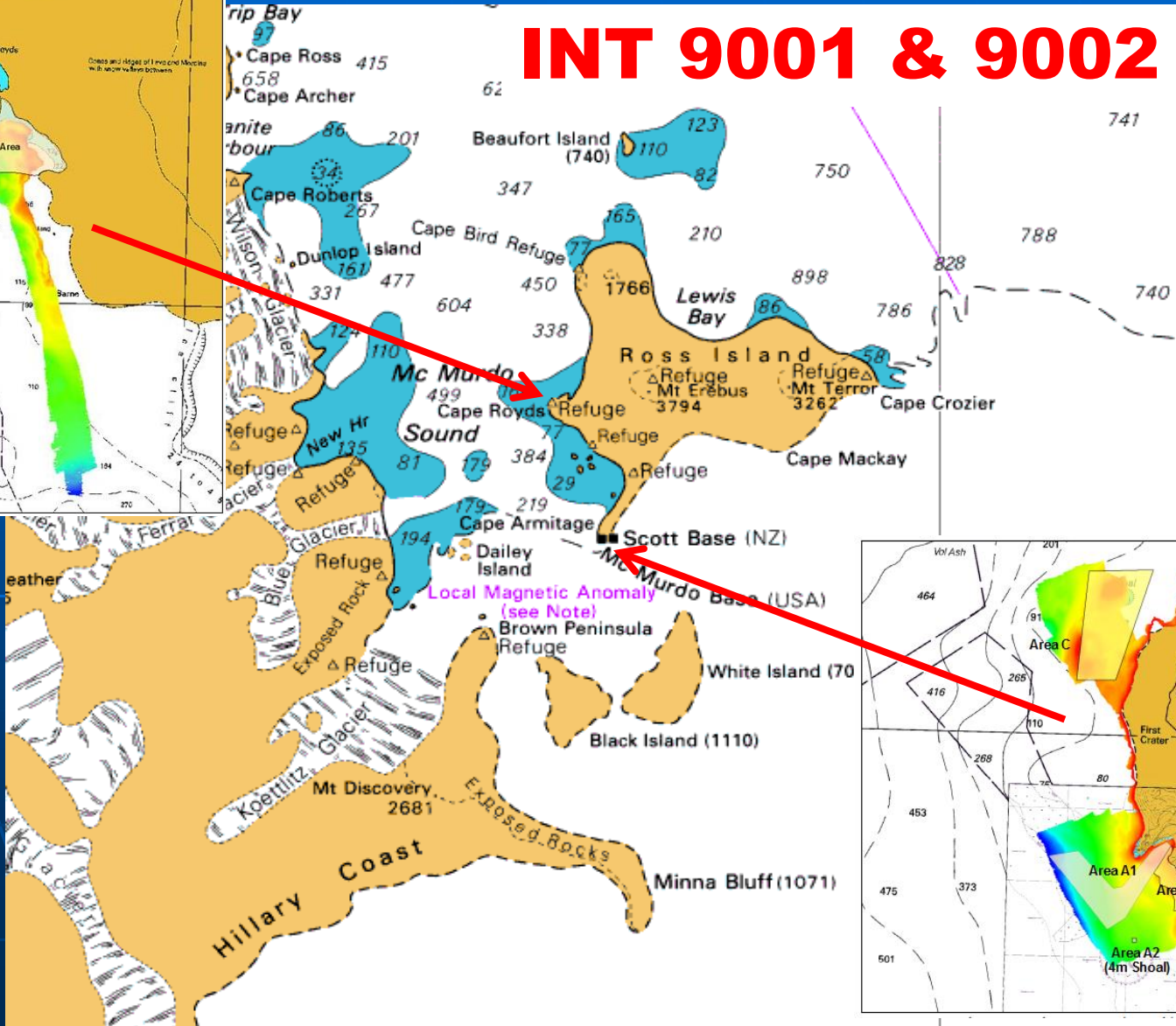
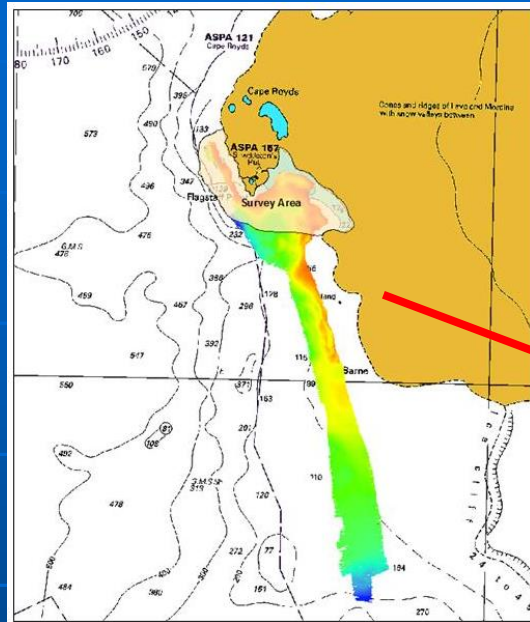
# Deception Island – Neptunes Bellows



**INT 9120**



# Ross Island – Survey request from US/NZ





- ✦ Risk assessment studies since HCA13 - The UK has not carried out any in depth studies. However, regular monitoring of Tourist vessel statistics and traffic density provide evidence to support existing INT charting and highlight the need for further coverage.
- ✦ There has been no impact of the Polar Code on our activities



# Status of Relations with Other Organizations

- ✦ Scientific and Polar Institutes – Regular liaison maintained with British Antarctic Survey (BAS), exchanging data and coordinating scientific and surveying requirements. New BAS Polar research vessel to be completed in 2019



- ✦ Cruise vessels – Regular contact maintained with IAATO, providing data to vessels and receiving access to AIS vessel movements to monitor navigational “hotspots”. IAATO tasked their vessels to provide confirmation of the existence of navigational aids in the Antarctic Peninsula, which proved very successful!
- ✦ Hydrographic data received from other organizations – Survey data received from Colombia (DIMAR)



✦ Hydrographic data provided to other primary charting authorities:

Chile (SHOA) - Multibeam survey data

Brazil (DHN) – Multibeam survey data

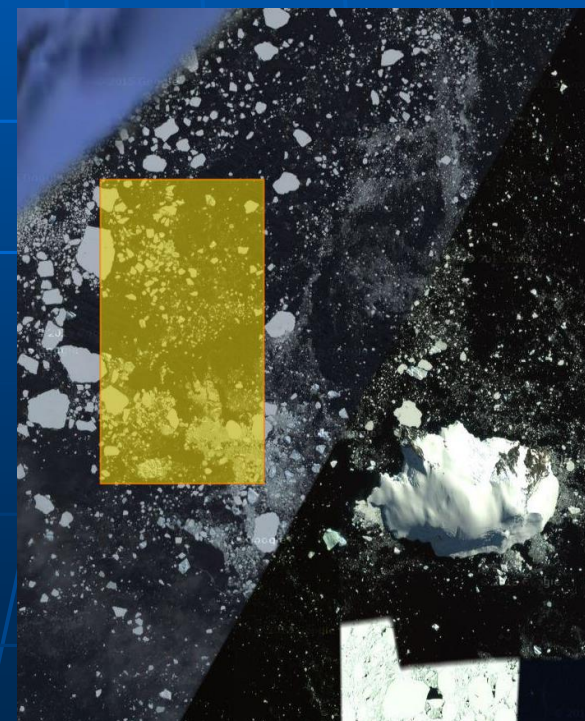
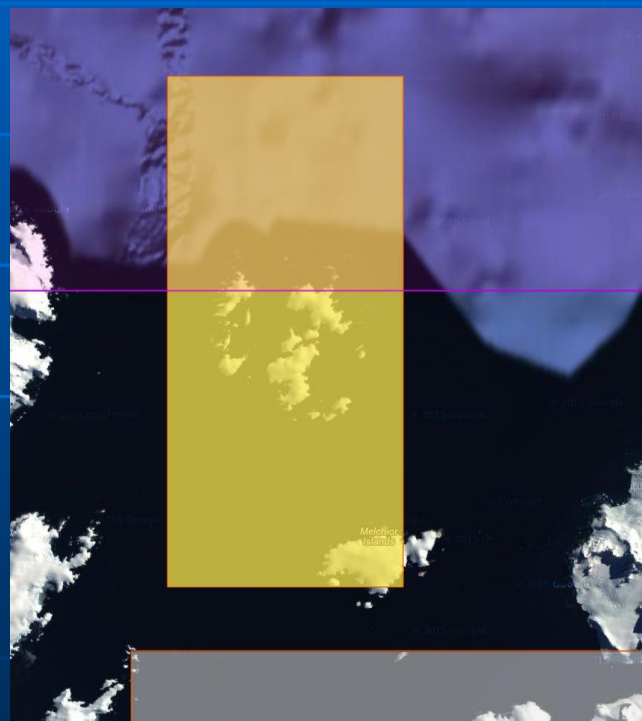
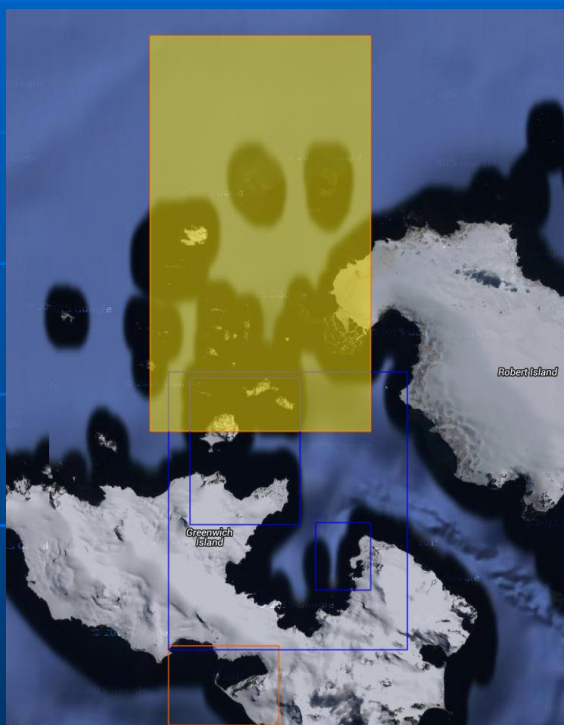
New Zealand/US (LINZ/NGA) – Multibeam survey data

Spain (IHM) – Imagery to be supplied in support of the preparation of new INT charts

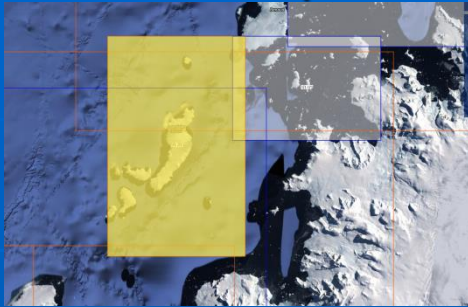


Charts and ENCs in preparation – UK have at least 4 INT charts in preparation with corresponding ENCs.

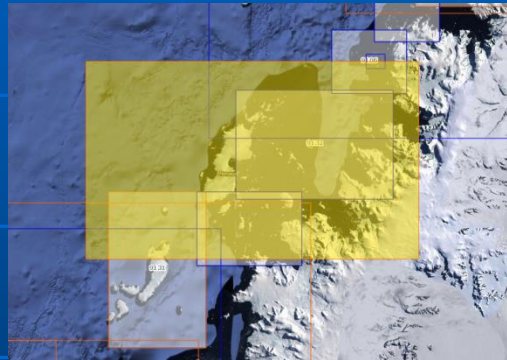
INT9117 (BA3463) Plans in Graham land – January 2017



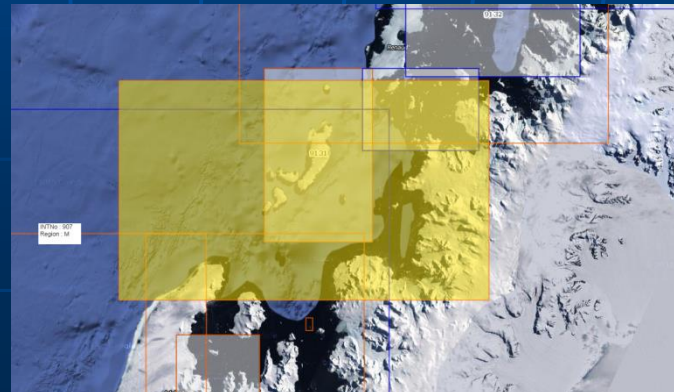
# INT9131 (BA450) Crystal Sound – 2017/18



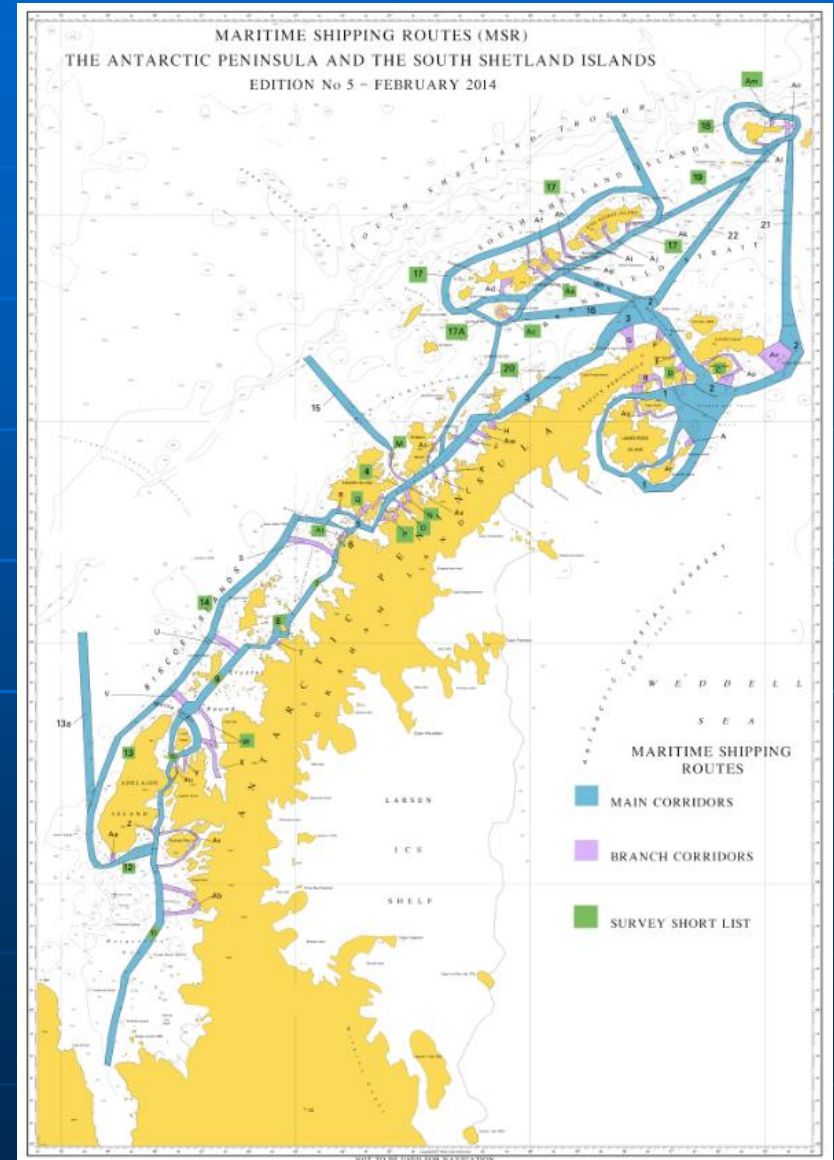
# INT9159 (BA447) Pendleton Strait to Grandidier Channel – 2017/18



# INT9160 (BA2975) Matha Strait to Pendleton Strait – 2017/18



New surveys – HMS PROTECTOR will continue to have priority tasking to survey areas within UK INT chart responsibility. This falls within the remit of the IHO HCA Prioritised Survey Plan.



# Any other matters of relevance to HCA

- ✦ Since HCA13, the UKHO has published its 8<sup>th</sup> Edition of the Antarctic Pilot (NP9)

Particular Issues that may require HCA  
Consideration :

