

## HCA SURVEY SHORT LIST

Updated to June 2018

### Main corridors

MSR*	Name	Usage category	Survey category	Notes and INT chart coverage. Published and proposed.
4	Gerlache strait	A	A + C	97% surveyed. INT 9103, 9165, 9104, 9156 & 9157 <i>Blocks surveyed by Chile 2010-18, Colombia 2015, Spain 2015 &amp; UK in 2005-17(Flandres Bay also 35% surveyed)</i>
7	Grandidier Channel	A+B	B	INT 9158, 9132 & 9159 15% surveyed. <i>Blocks surveyed by UK</i>
8	Cape Garcia to Jagged Island	B	C	15% surveyed. INT9107 & 9159 <i>Blocks surveyed by UK 2006/07</i>
9	Crystal Sound	B	B	INT 9160 <i>Blocks surveyed by UK 2017 60% complete</i>
10	Liard Island to Rothera	B	C	INT 9161, 9108 & 9163 <i>Blocks surveyed by UK 2018 10% complete</i>
11	Marguerite Bay	C	B+C	INT 9163 & 9164
12	Woodfield Channel	C	B	INT 9163
13	Woodfield Channel to Matha Strait	B	C	INT 9160 & 9162
14	Matha Strait to Hugo Island	B	C	INT 9158, 9159 & 9160
17	South Shetlands MSR	A	A+C	<i>INT 9151. SW corridor surveyed by UK, Livingstone Island to Penguin Island complete. Blocks surveyed by UK 2005-17, Brazil 2007-08 &amp; Spain 2011/16</i>
17A	Deception Island circular route	A	A	INT 9120 Deception Island circular route 100% complete. <i>Blocks surveyed by UK in 2005-08. Large block from Livingston Is. To Deception Is. Surveyed by Spain 2011-16</i>
18	Elephant Island MSR	A+C	A+C	INT 9150 <i>Block surveyed by Brazil in 2006</i>
19	Elephant Island to KGI	A	C	INT 9150, INT 9151 <i>Block surveyed by Brazil in 2005</i>
20	Deception Is to Brabant Island	A	C	INT 9120, INT 9155, 9156, 9157 <i>Block surveyed by UK in 2005-06</i>

### Branch corridors and approaches

MSR	Name	Usage category	Survey category	Notes and INT chart coverage. Published and proposed.
C	Paulet Island	A	A + C	50% surveyed, remaining area top of UKHO priority. <i>INT 9112 Block surveyed by UK in 2005-06</i>
D	Brown Bluff and Fridtjof Sound	A	A+C	INT 9154 Approaches to Brown Bluff complete up to 50m contour. <i>Block surveyed by UK in 2006-07</i>
M	Melchior Islands and approaches	A+C	A+C	75% complete. <i>INT 9157 &amp; 9117 Block surveyed by UK in 2005-17</i>
N	Errera Channel	A	C	Includes Cuverville Is, Danco Is and Ronge Is. INT 9103. 95% complete. <i>Block surveyed by UK in 2005-06 &amp; Chile 2014 &amp; 2016</i>
O	Andvord Bay	A	A	Includes Neko Harbour. INT9158 & 9103. 100% complete. <i>Block surveyed by UK in 2005-06 &amp; Chile 2014-16</i>
P	Paradise Harbour	A	C	Almirante Station and Waterboat Point. <i>INT 9135 &amp;</i>

\* MSR = Maritime Shipping Route. The figures / letters in this column are shown on the MSR diagram which is on the following page.

				INT 9104 Paradise Harbour 95%, Bryde Channel 90%, Furguson Channel 80%. <i>Block surveyed by UK in 2007-08 &amp; Chile 2010-16</i>
Q	Neumayer Channel and Port Lockroy	A	A + C	100% complete. INT 9158 & 9104. <i>Block surveyed by UK in 2005-06 &amp; Chile 2010-16</i>
W	Detaille Island and approaches	C	C	INT 9161 & 9117. Detaille Island now has Historic Monument status, and following restoration will receive increased vessel traffic. Recent grounding on approaches. 60% surveyed, all shoals close to Island detected.
Ac	Port Foster and Neptunes Bellows	A	A+B	INT 9120 Port Foster and Whalers Bay 99% complete. Neptunes Bellows completed to position Ravn Rock. <i>Blocks surveyed by UK 2005-16 &amp; Spain 2011/16</i>
Ae	McFarlane Strait	A	A + C	Half Moon Is cat A, Yankee Harbour 100%, McFarlane Strait 60% . INT 9121 & 9112. <i>Block surveyed by UK in 2005-07 &amp; Spain 2016</i>
At	Booth Is., Port Charcot & Pleneau Is	B	C	INT 9158 35% complete. <i>Blocks surveyed by Xplore Expeditions/SHOM 2013</i>
Am	Point Wild	A	C	INT 9150 & INT 9113. 60% surveyed, block to corridor 18 remaining. <i>Blocks surveyed by UK in 2012</i>
C	Mawson	C	A+C	AUS600 Proposed survey area Feb-Mar 2012. Four areas completed 2011/12 season
D	Commonwealth Bay	C	C	AUS603 Proposed survey area Dec- Jan 2012
8	Davis to Larsemann Hills	C	C	Occasional visits by Aurora Australis, Chinese re-supply vessel Xue Long and Russian re-supply vessels. No charts exist of the approaches to the Larsemann Hills.coverage except at small scale. Sandjeford Bay to Cape Rundingen – INT 9030 AUS451

### Categories

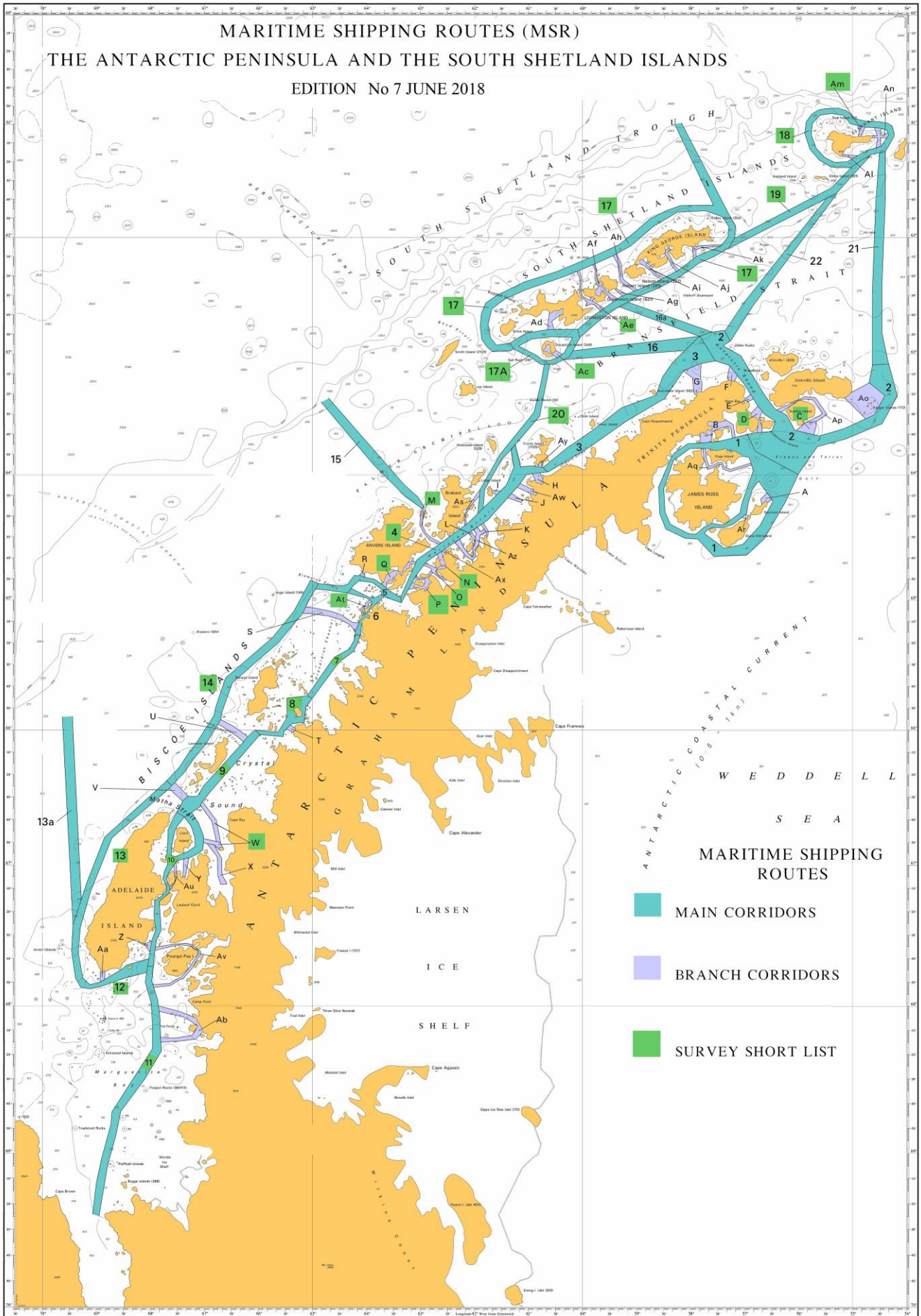
Category	Usage
<b>A</b>	Frequent
<b>B</b>	Regular
<b>C</b>	Infrequent

Category	Current survey status
<b>A</b>	Adequately surveyed
<b>B</b>	Requires re-survey at larger scale or to S-44 standard
<b>C</b>	Has not been systematically surveyed/Unsurveyed

# MARITIME SHIPPING ROUTES (MSR)

## THE ANTARCTIC PENINSULA AND THE SOUTH SHETLAND ISLANDS

EDITION No 7 JUNE 2018



NOT TO BE USED FOR NAVIGATION

