

9th HCA New Zealand National Report

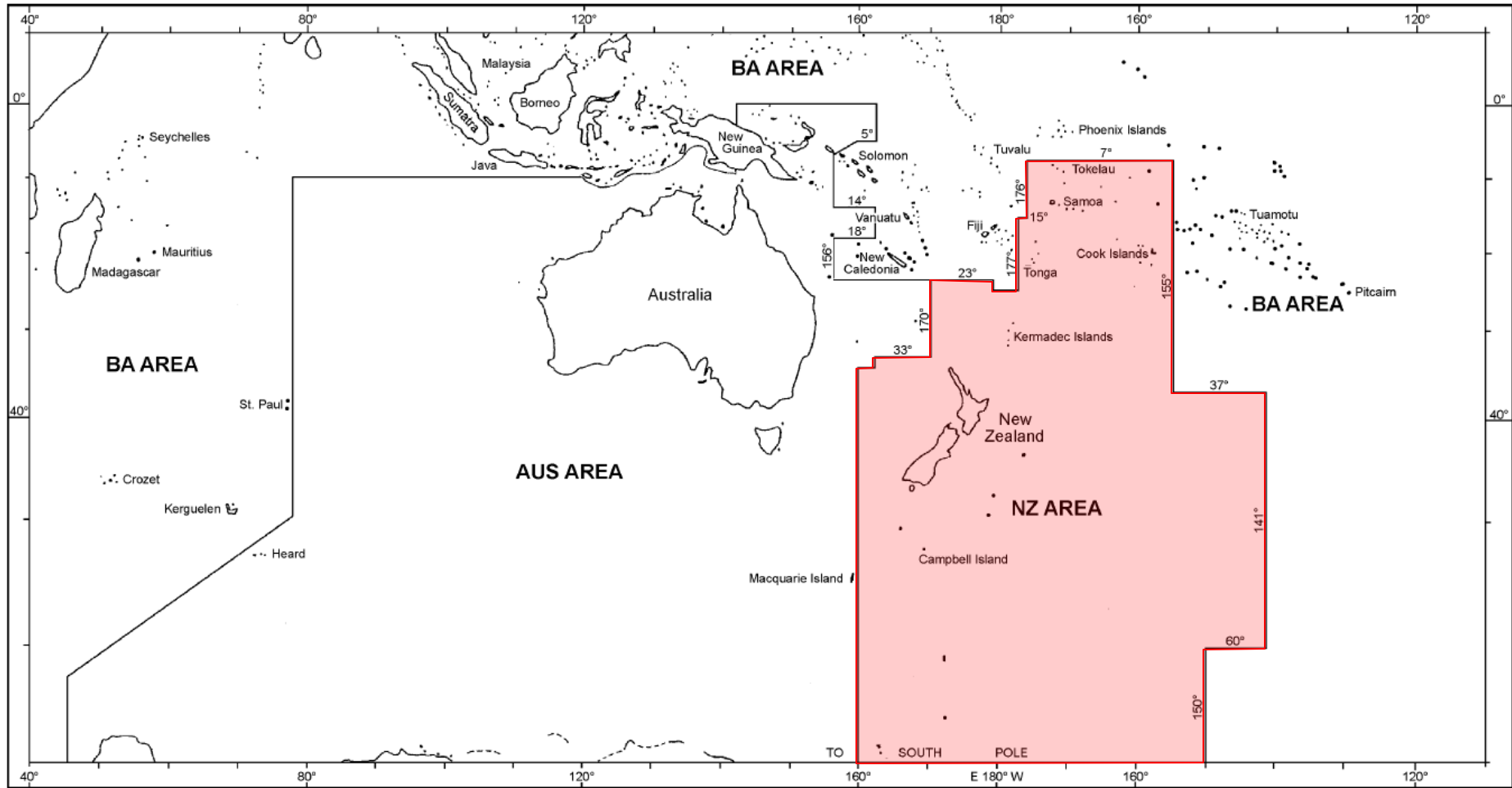


HIGHLIGHTS

- New Chief Executive – Mr Colin MacDonald
- Changes in LINZ
 - NTHA disestablished
 - LINZ Hydrographic Services now responsible for all Hydrography and IHO relationship
- New Production System – CARIS HPD
- Hydrographic surveys in Ross Dependency
 - 2001 & 2004 LINZ Safety of Navigation surveys
 - 2006 & 2008 Scientific Voyages
- Nautical Charts in Antarctica
 - Most recent NZ 14903 (INT 9003) Scott Island
- NZ ENCs - 43 published to date
- MSI 51 NAVAREA XIV in 2009
- Capacity Building – no activity (S-55 update req)
- NZ will host the ATME Meeting in Wellington in December 2009
- Conclusion – New Zealand is committed to Hydrography in Antarctica

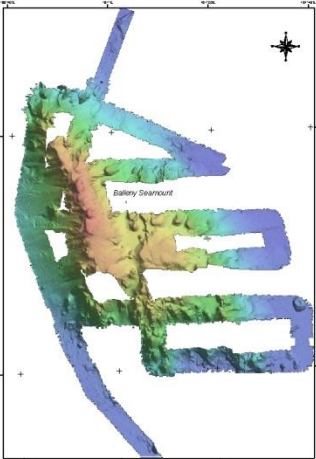


AREAS OF NEW ZEALAND CHARTING AND COVERAGE OF NOTICES TO MARINERS

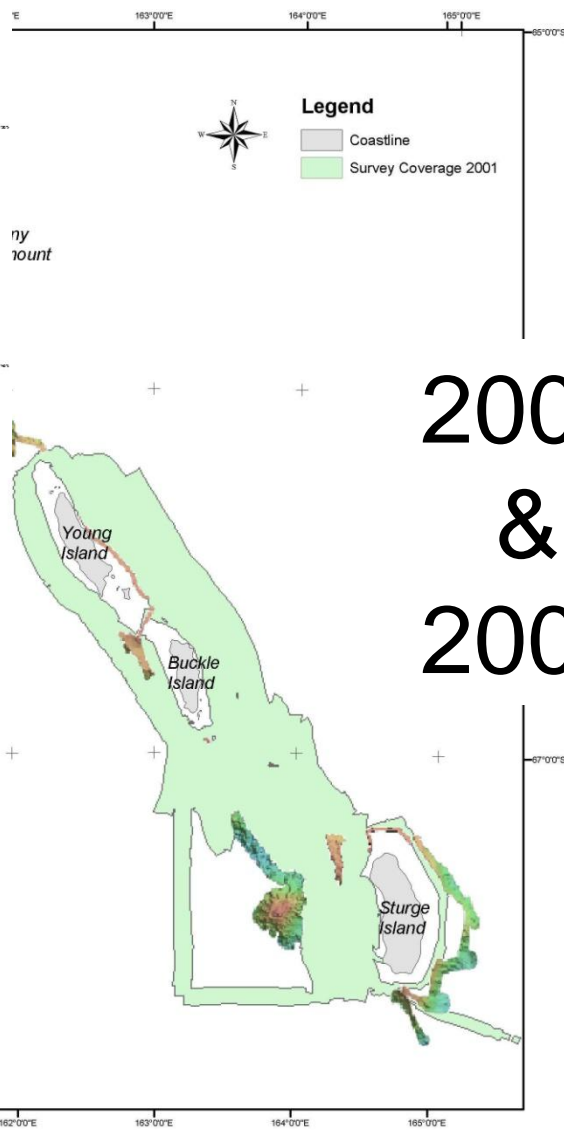


LINZ Hydrographic Services

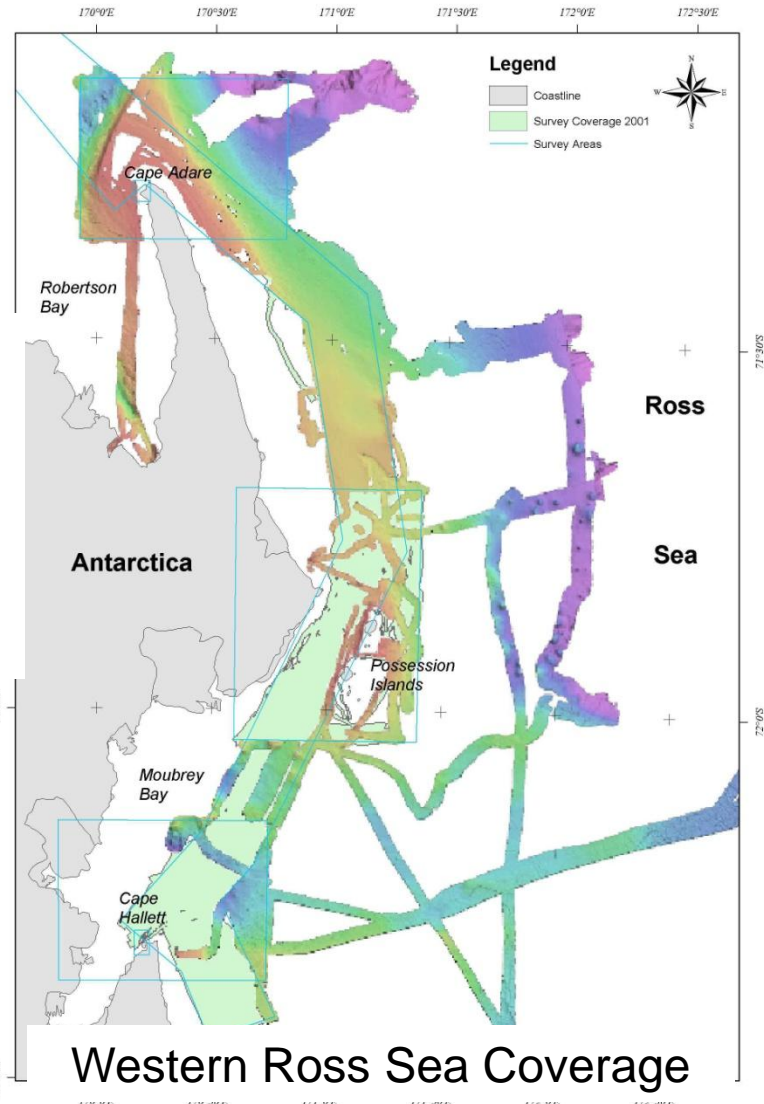
Toitu te
Land whenua
Information
New Zealand



Balleny Seamount Coverage



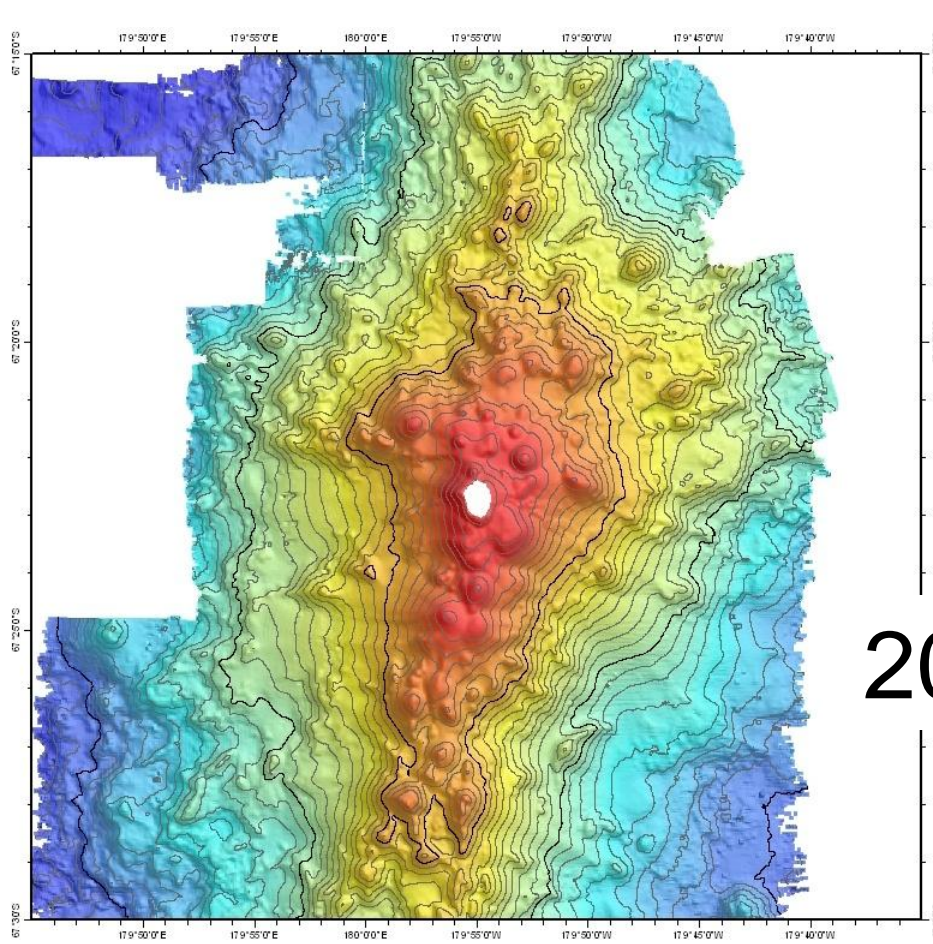
2001
&
2004



Western Ross Sea Coverage

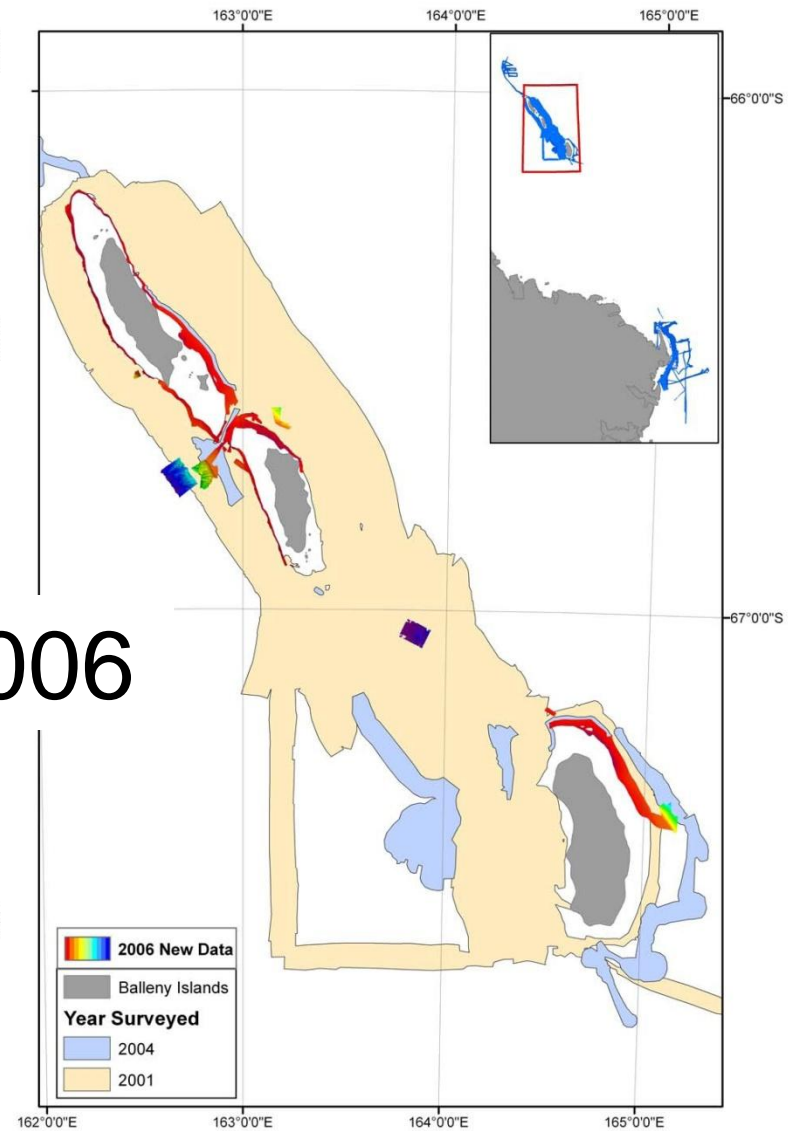


LINZ Hydrographic Services



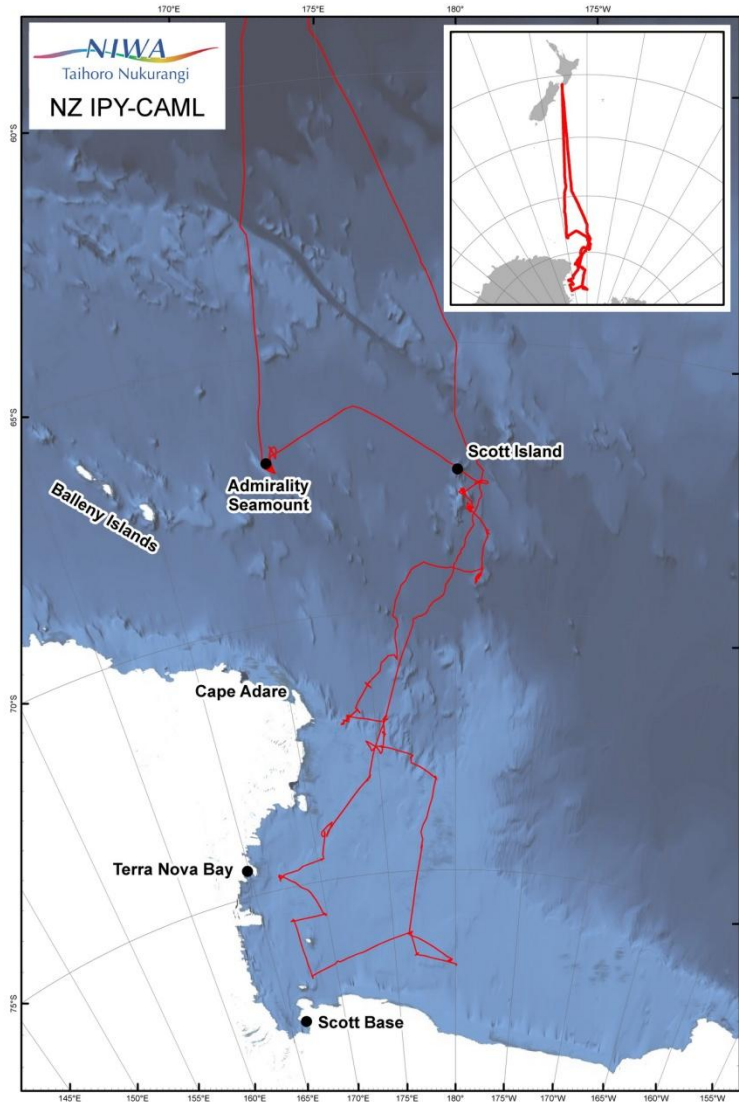
Scott Island Coverage

2006



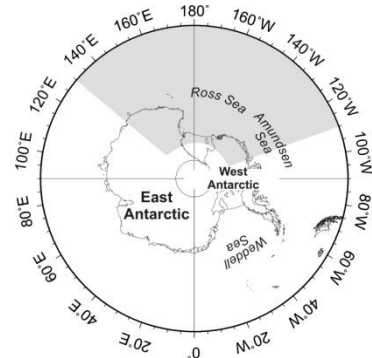
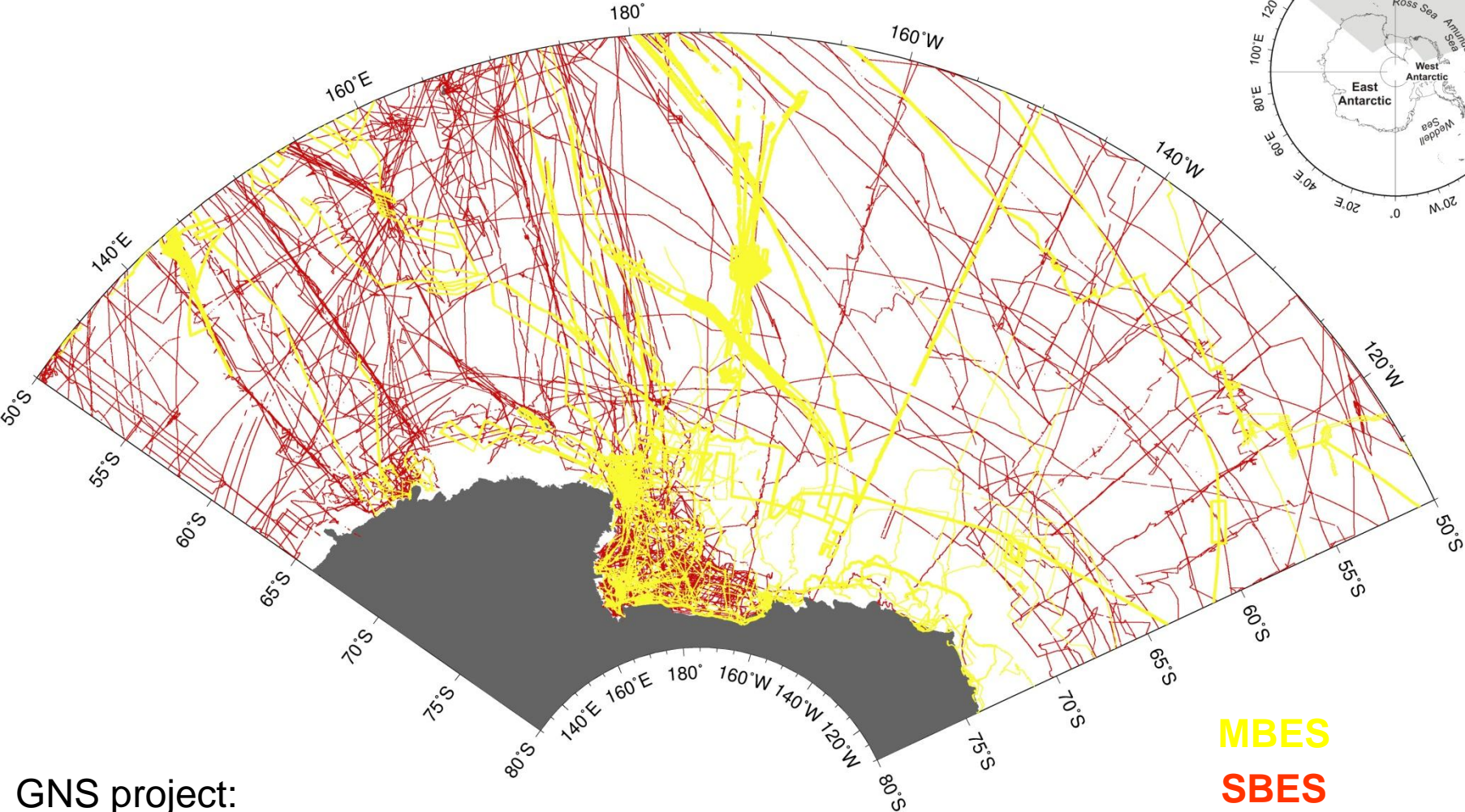
LINZ Hydrographic Services

2008



LINZ Hydrographic Services

Compilation of Open-file Bathymetric Data for the Ross Sea Region of Antarctica



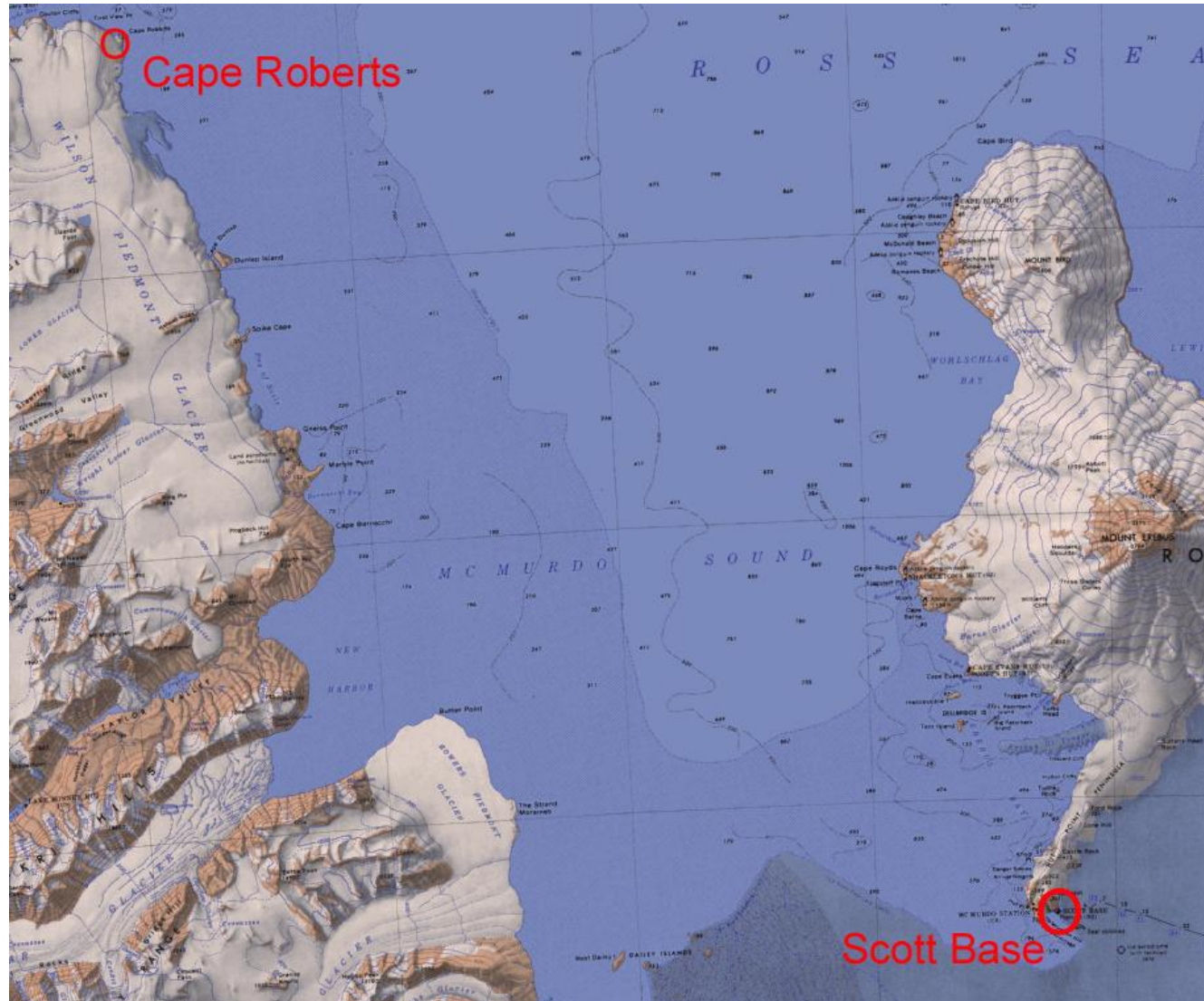
MBES
SBES



GNS project:
update the regional bathymetry map of the Ross Sea

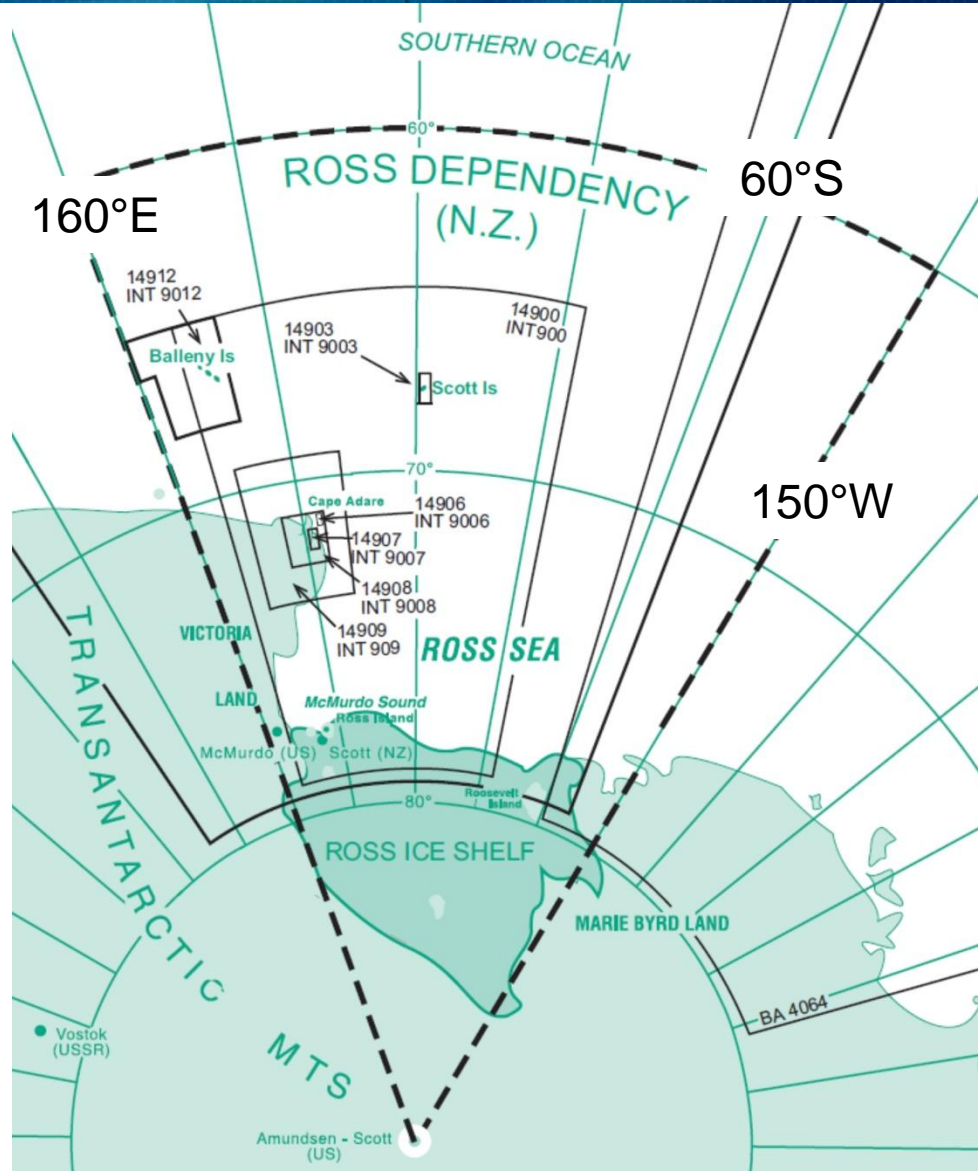
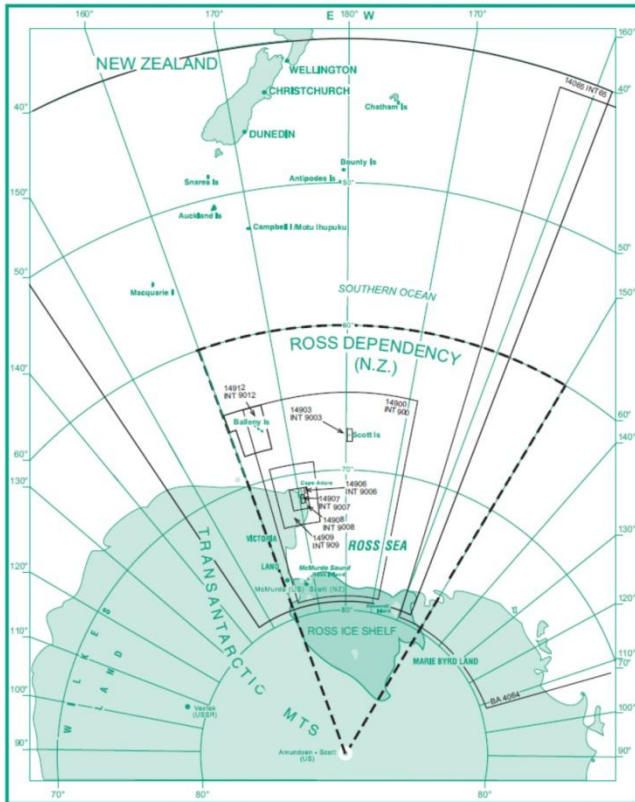
LINZ Hydrographic Services

Toitu te
Land whenua
Information
New Zealand

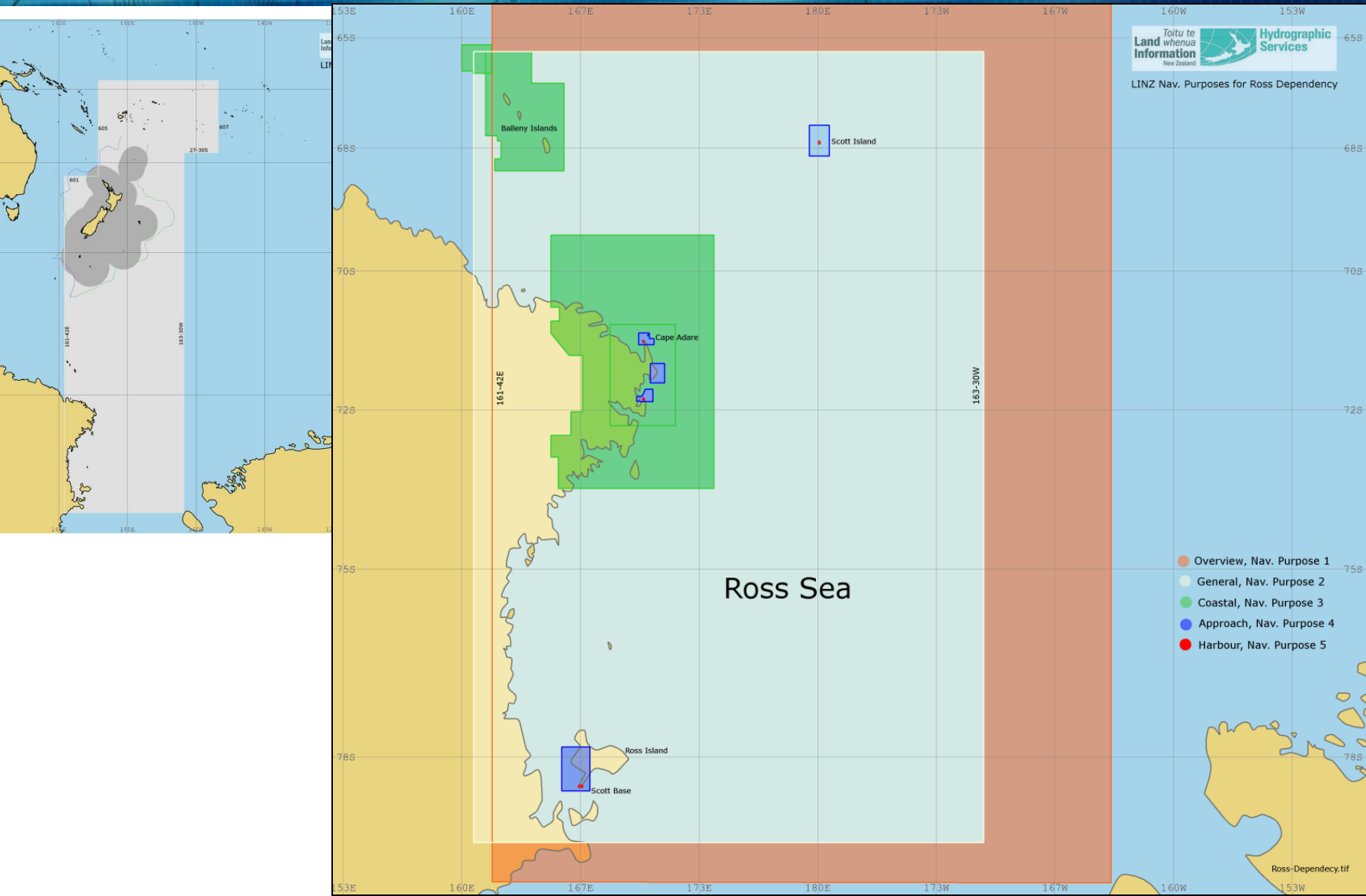


LINZ Hydrographic Services

Toitu te
Land whenua
Information
New Zealand



LINZ Hydrographic Services





Antarctic Treaty Meeting of Experts

9 - 11 DECEMBER 2009
WELLINGTON, NEW ZEALAND

The New Zealand Ministry of Foreign Affairs & Trade will host an ATME meeting on the Management of Ship-Borne Tourism in the Antarctic Treaty Area in December 2009.

www.mfat.govt.nz/atme2009



**Thank you
&
Questions**

