



NATIONAL GEOSPATIAL-INTELLIGENCE AGENCY

Know the Earth... Show the Way... Understand the World

Maritime Watch

Coordinated global service notifying users by satellite broadcast of immediate hazards that might endanger the safety of life at sea

Jim Rogers
Technical Executive
NGA Maritime Safety Office
James.E.Rogers@nga.mil

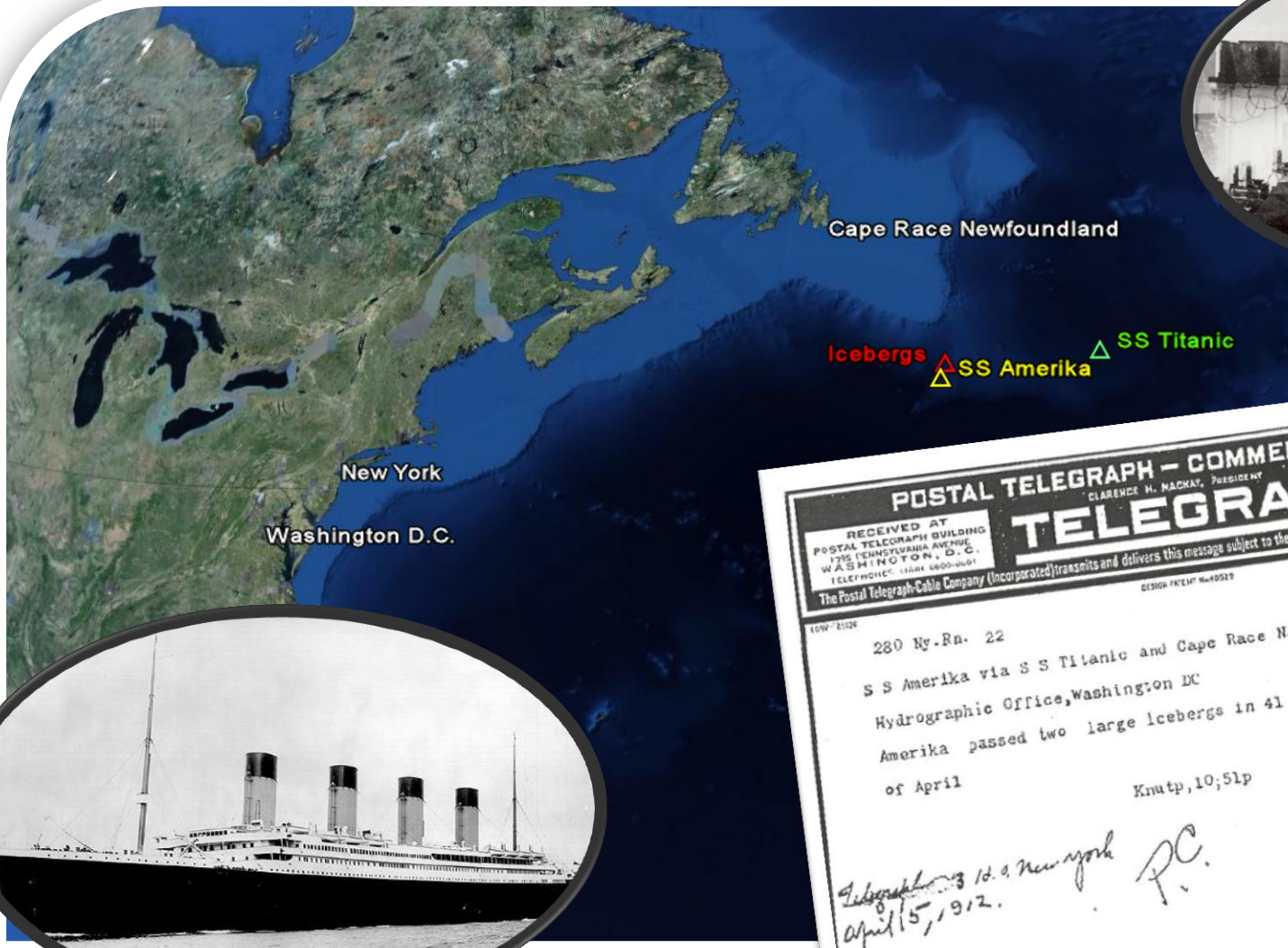




NATIONAL GEOSPATIAL-INTELLIGENCE AGENCY

Know the Earth... Show the Way... Understand the World

April 14-15, 1912



POSTAL TELEGRAPH - COMMERCIAL CABLES
CLARENCE M. MACHAT, President
TELEGRAM
DELIVERY NO. 795

RECEIVED AT
POSTAL TELEGRAPH BUILDING
1735 PENNSYLVANIA AVENUE
WASHINGTON, D. C.
TELEPHONE: HARBOUR 0800-0801

The Postal Telegraph-Cable Company (Incorporated) transmits and delivers this message subject to the terms and conditions printed on the back of this blank

280 Hy. Rn. 22
S S Amerika via S S Titanic and Cape Race N.T. April, 14, 1912
Hydrographic Office, Washington DC
Amerika passed two large icebergs in 41 27 N 50 8 W on the 14th
of April
Knutp, 10; 51p

62496
filed with
2995

HYDRO. OFFICE
Rec'd APR 15 1912

Enclosures

*Telegram 3 10.9 New York
April 15, 1912.*

PC.

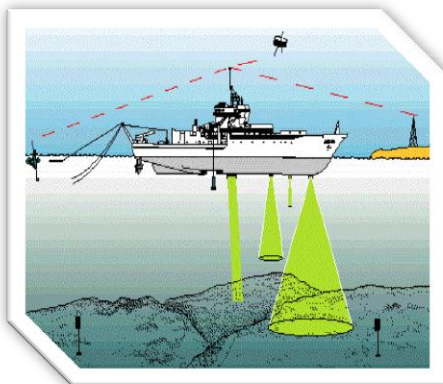
mm



NATIONAL GEOSPATIAL-INTELLIGENCE AGENCY

Know the Earth... Show the Way... Understand the World

Hazards





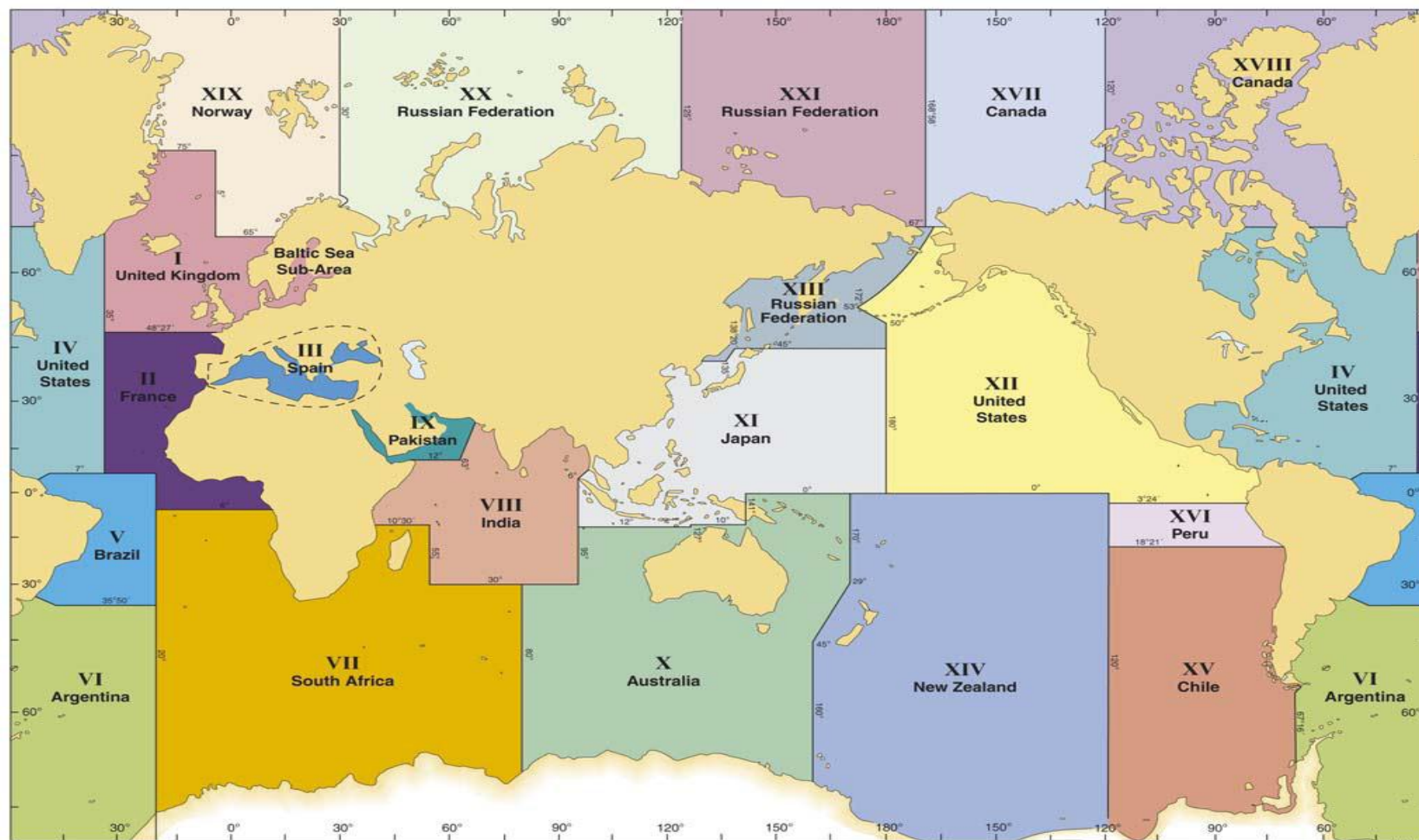
NATIONAL GEOSPATIAL-INTELLIGENCE AGENCY

Know the Earth... Show the Way... Understand the World

World-Wide Navigational Warning Service



NAVAREAS





NATIONAL GEOSPATIAL-INTELLIGENCE AGENCY

Know the Earth... Show the Way... Understand the World



navsafety@nga.mil

Data SIO, NOAA, U.S. Navy, NGA, GEBCO
US Dept of State Geographer

© 2012 Google
© 2012 MapLink/Tele Atlas

©2010 Google™

11°56'19.06" N 82°20'29.77" W elev 0 ft

Eye alt 3009.73 mi

Imagery Date: Jan 1, 1970



NATIONAL GEOSPATIAL-INTELLIGENCE AGENCY

Know the Earth... Show the Way... Understand the World

Capacity Building 20-22 May, Trinidad





Capacity Building At Work

- Senior Surveyor from Guyana, Mr. Troy Clarke, attends the course in Trinidad
- After the first day, he realizes the power of the WWNWS and reports that Georgetown light is unreliable...



Capacity Building At Work

From: troy clarke
Sent: Tue 21/05/2013 04:07
To:
Cc: Beale Guy
Subject: Sector Light (Guyana)
Hello,

This is to inform and seek your advice on the following:

The Georgetown Lighthouse is presently obscured by an Hotel under construction. Plans are to place a light on the top of the Hotel to carry out the equivalent function of the light on the mention feature, (specially) northwards.

06-49.5N 058-09.9W

The present light on the Lighthouse is a sectored light of which could be used be used by vessels proceeding southwards.

With regards
Troy ClarkeSenior Hydrographic Surveyor
Ports and Harbours Division
Maritime Administration Department
Georgetown Ferry Stelling
Guyana, South America
Tel : (592) 226 0860



NATIONAL GEOSPATIAL-INTELLIGENCE AGENCY

Know the Earth... Show the Way... Understand the World

Georgetown Light - Guyana





NATIONAL GEOSPATIAL-INTELLIGENCE AGENCY

Know the Earth... Show the Way... Understand the World

Georgetown Light - Guyana





NATIONAL GEOSPATIAL-INTELLIGENCE AGENCY

Know the Earth... Show the Way... Understand the World

Georgetown Light - Guyana





WWNWS at work

From: Janus Christopher -Chris- G Mr NGA-SHGA USA CIV
Sent: Tuesday, May 21, 2013 6:48 PM
To: NAVSAFETY
Subject: Fw: Sector Light (Guyana)

Richard,

Please review email below. Unless you determine otherwise this should go out as a "Light Unreliable". I'm sitting next to the surveyor from Guyana who reported the information. Pretty good way to get some MSI. Could you also forward the NAVAREA IV warning when you are done. If you determine that it doesn't need to go out, let me know that too and why.

Thanks!

V/R,
Chris

Christopher Janus
Chief, Early Warnings Branch (SHGA)NAVAREA IV/XII
Maritime Safety Office (SH)
National Geospatial-Intelligence Agency

Website:
Voice: 571-557-6684
Mobile: 301-335-2080



Capacity Building At Work

From: NAVSAFETY

Sent: Tuesday, May 21, 2013 07:05 PM Central Standard Time

To: Janus Christopher -Chris- G Mr NGA-SHGA USA CIV

Cc: Johnson Richard -Dick- C Mr NGA-SHSD USA CIV

Subject: RE: Sector Light (Guyana)

There are numerous minor aids nearby, including an Aero beacon, but no other major aids. Good catch. Out on AMHS now, will be broadcast on sats in the AM.

As requested:

NAVAREA IV 286/13(24).

GUYANA.

CHART 24380

GEORGETOWN LIGHT 06-49.5N 058-09.9W UNRELIABLE.//

Regards,Duty Watch Officer

NAVAREA IV & XII



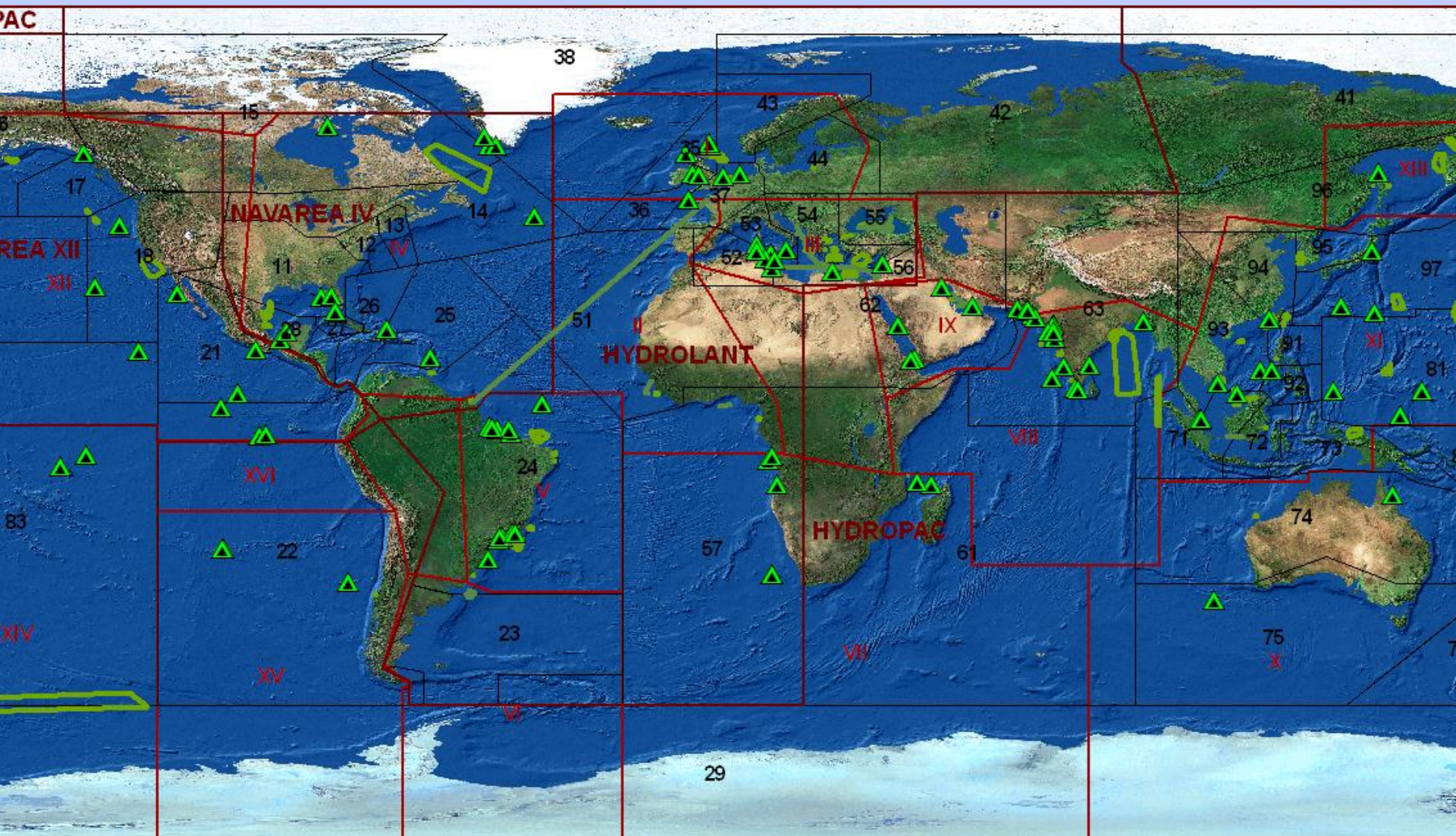
Capacity Building At Work

- Original request sent to NAVAREA IV at 1858 ET. NAVAREA IV Warning promulgated by Watch Officer at 1905 ET.
- Well Done!



NATIONAL GEOSPATIAL-INTELLIGENCE AGENCY

Know the Earth... Show the Way... Understand the World



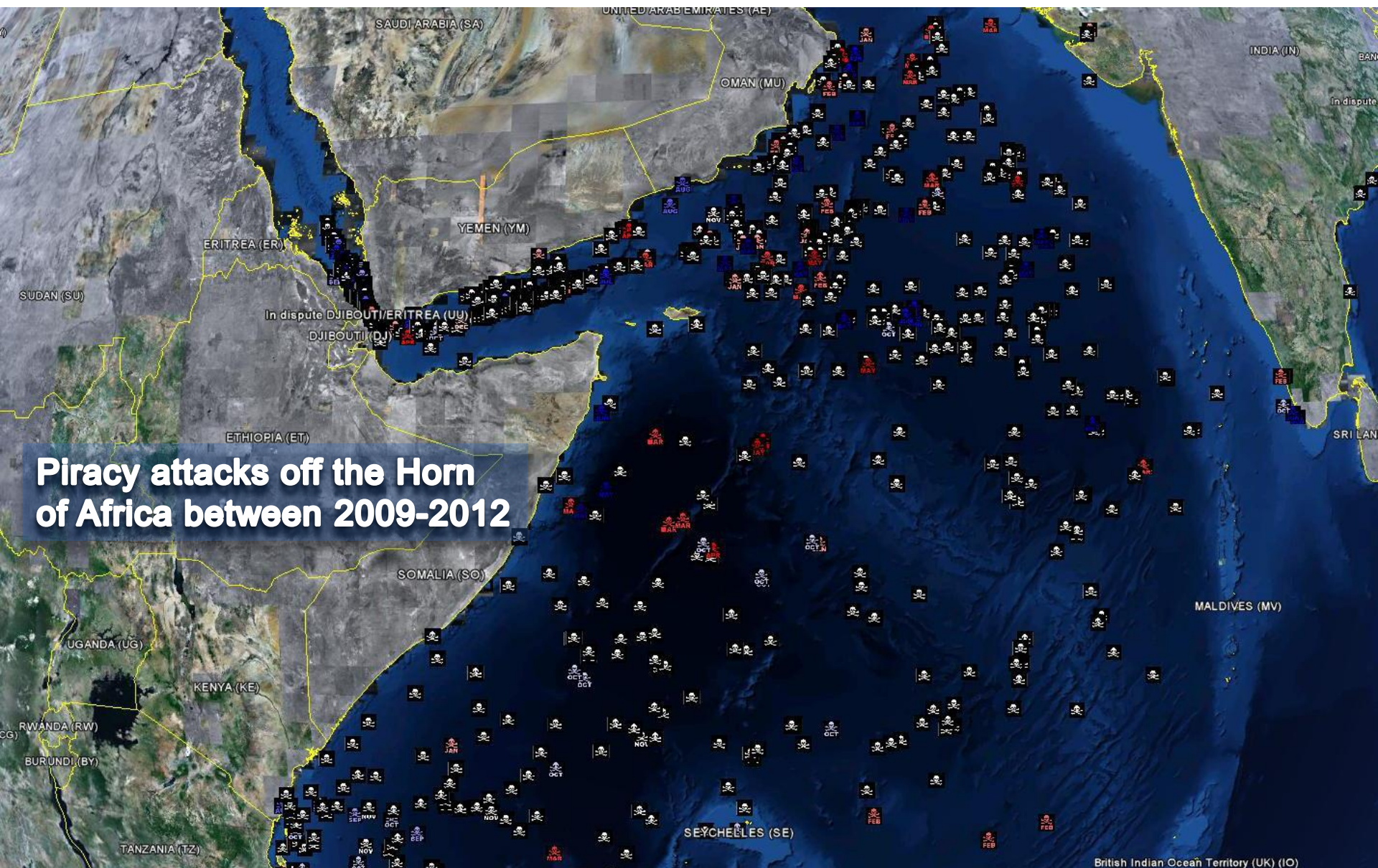
= Maritime Warnings currently in force



NATIONAL GEOSPATIAL-INTELLIGENCE AGENCY

Know the Earth... Show the Way... Understand the World

Piracy attacks off the Horn of Africa between 2009-2012





NATIONAL GEOSPATIAL-INTELLIGENCE AGENCY

Know the Earth... Show the Way... Understand the World

Maritime Safety Office

Global Coverage

Surface Navigation



Maritime Watch (24/7)

World Wide Navigational
Warning Service
(WWNWS)



Subsurface Navigation



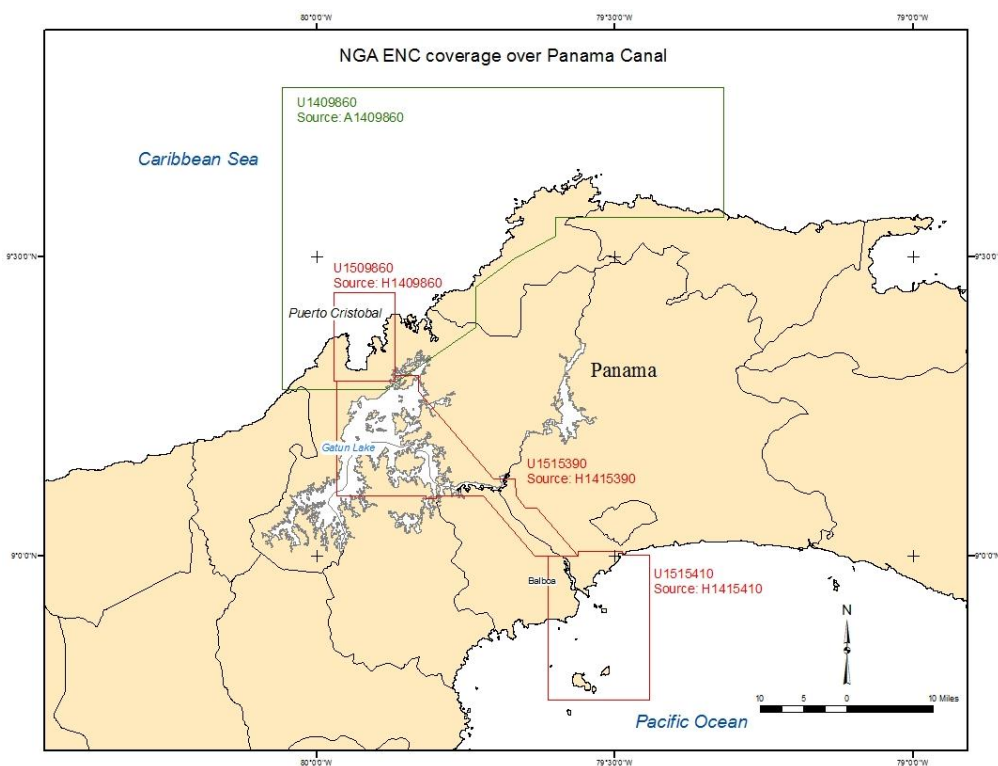
Additional Coverage:

Ocean Tide Prediction, Crisis Response,
Littoral, Riverine and Maritime Mission Specific Products



Panama ENC

- NGA produced its first Four ENC (S-57) Cells over the Panama Canal.
(US409860, US509860, US515390, & US515410)
- The ENC Cells are available from the NOAA ENC Website.



Office of Coast Survey

HOME | ABOUT US | CONTACT | REGIONAL MANAGERS

Nautical Charts & Pubs | Surveys & Wrecks | GIS & Other Products | Research & Development | Customer Service | Business Opportunities | Education

The Chart Downloader web site provides the public with access to, and information about, NOAA navigation products.

NOAA Raster Navigational Charts.

NOAA [RNCs](#) are geo-referenced digital images of the charts in BSB format.
NOAA [PDFs](#) are full-size, high-resolution printable images of the charts.
NOAA [ChartViewer](#) displays the charts in a web browser.
NOAA [BookletChart](#) are page-size printable panels of the charts.
NOAA RNCs are updated weekly with Notice to Mariner corrections.

NOAA Electronic Navigational Charts.

NOAA [ENCs](#) are vector files of chart features and available in S-57 format.
NOAA ENCs support marine navigation by providing the official Electronic Navigational Chart used in ECDIS and in electronic charting systems.
NOAA ENCs are updated weekly with Notice to Mariner corrections.

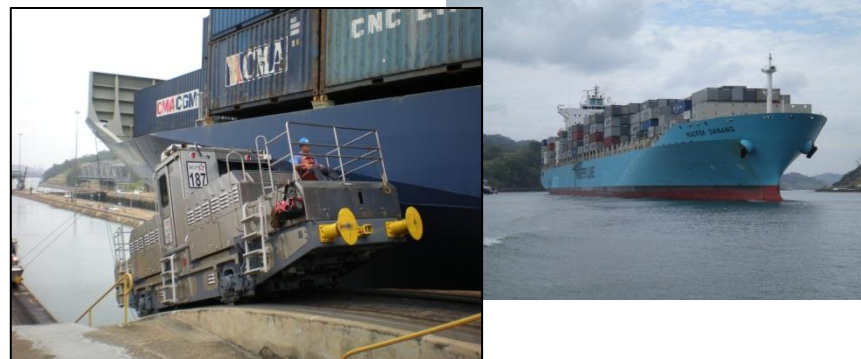
Graphical Catalog for searching and downloading products.

The [Graphical Catalog](#) displays the outlines of the RNCs, PDFs, ENCs and Coast Pilot regions. These products can be selected and downloaded from this interface. Google Maps is used as the background display and search options. To the right of the map display is an area that shows status and product information.

Chart Panel	Scale
13281	2066 1:10000
13229	2067 1:20000
13274	2078 1:40000
13287	2088 1:80000
13278	2089 1:80000
13280	2090 1:378838

Selected Point
42° 35' 27.44"N
070° 41' 04.54"W

Privacy Policy | Disclaimer | NOAA's National Ocean Service | NOAA | U.S. Department of Commerce





NATIONAL GEOSPATIAL-INTELLIGENCE AGENCY

Know the Earth... Show the Way... Understand the World