



14th Meso American & Caribbean Sea
Hydrographic Commission

Sint Maarten, The Netherlands Dec. 10th 2013

Maritime Data Management

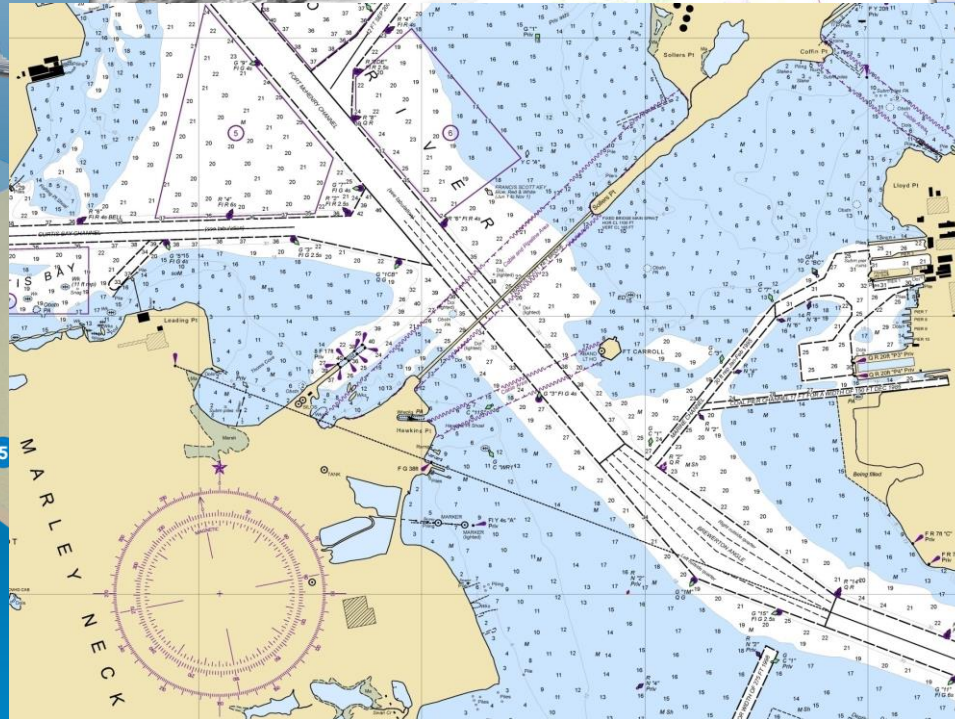
(Sistema de Administracion de Datos Marinos)

Rafael Ponce



Maritime Data Management

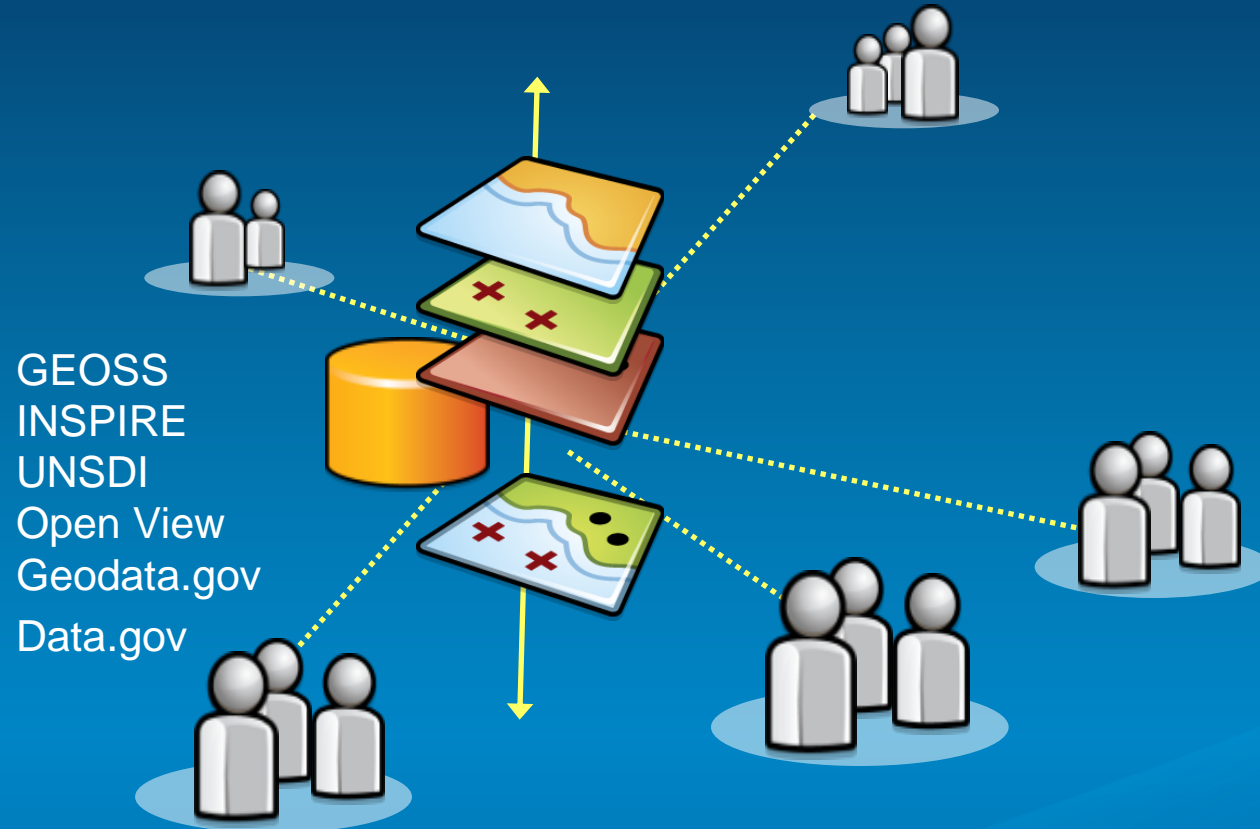
Managing a Complex Environment



- | | | |
|----------------------------|--|---------------------------|
| 1 Energy, Renewable | 7 Security (Port security, law enforcement, sovereignty) | 12 Federal Submerged Land |
| 2 Energy, Nonrenewable | 8 Material Extraction | 13 Fishing |
| 3 Lease Block | 9 Navigation | 14 Transmission |
| 4 Restricted Areas | 10 Facility Management (Ports, Harbor, Military) | 15 Ocean Disposal |
| 5 Heritage Protected Areas | 11 State Submerged Land | 16 Recreation Areas |
| 6 Exploration | | 17 Marine Protected Areas |

Data Sharing Has Been a Key to This Success

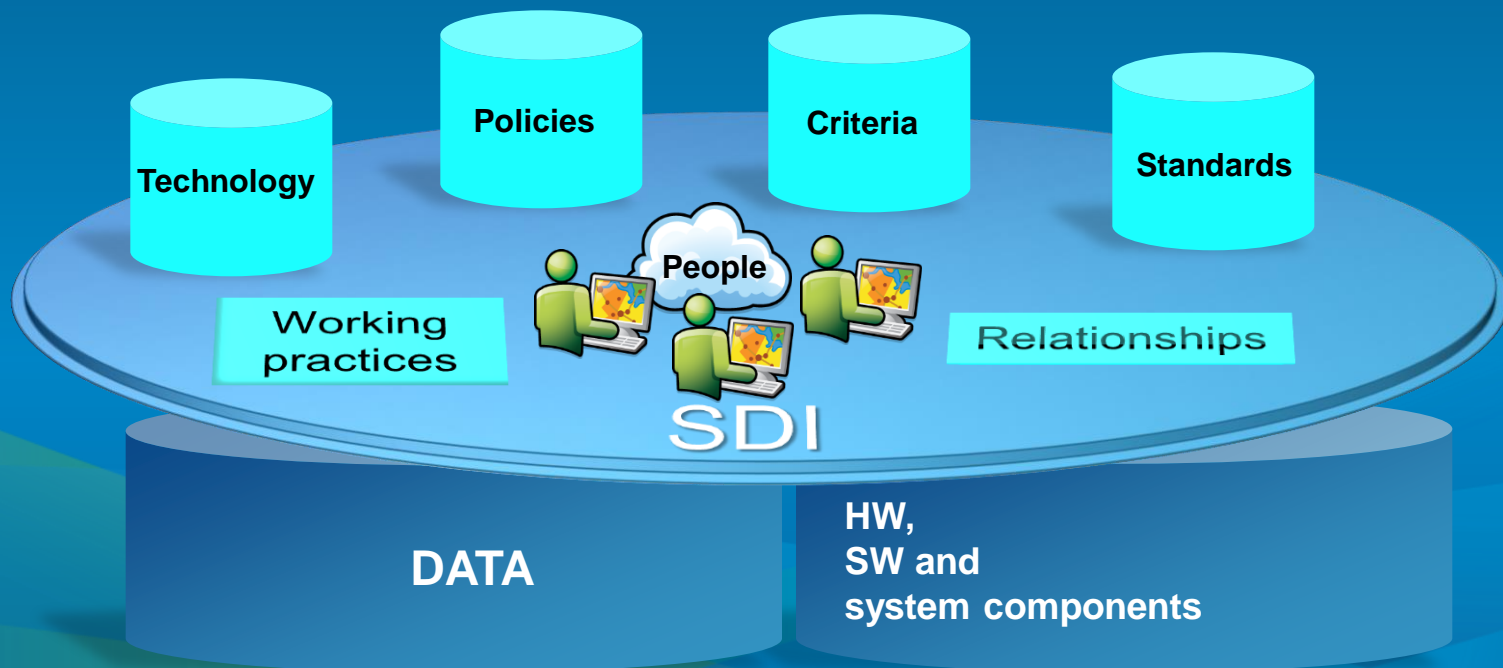
Many Agencies Consider Sharing Part Of Mission



Spatial Data Infrastructure

Constituents

- SDI is “the relevant base collection of technologies, policies and institutional arrangements that facilitate the availability of and access to spatial data.” (Ref: Global Spatial Data Infrastructure Cookbook).

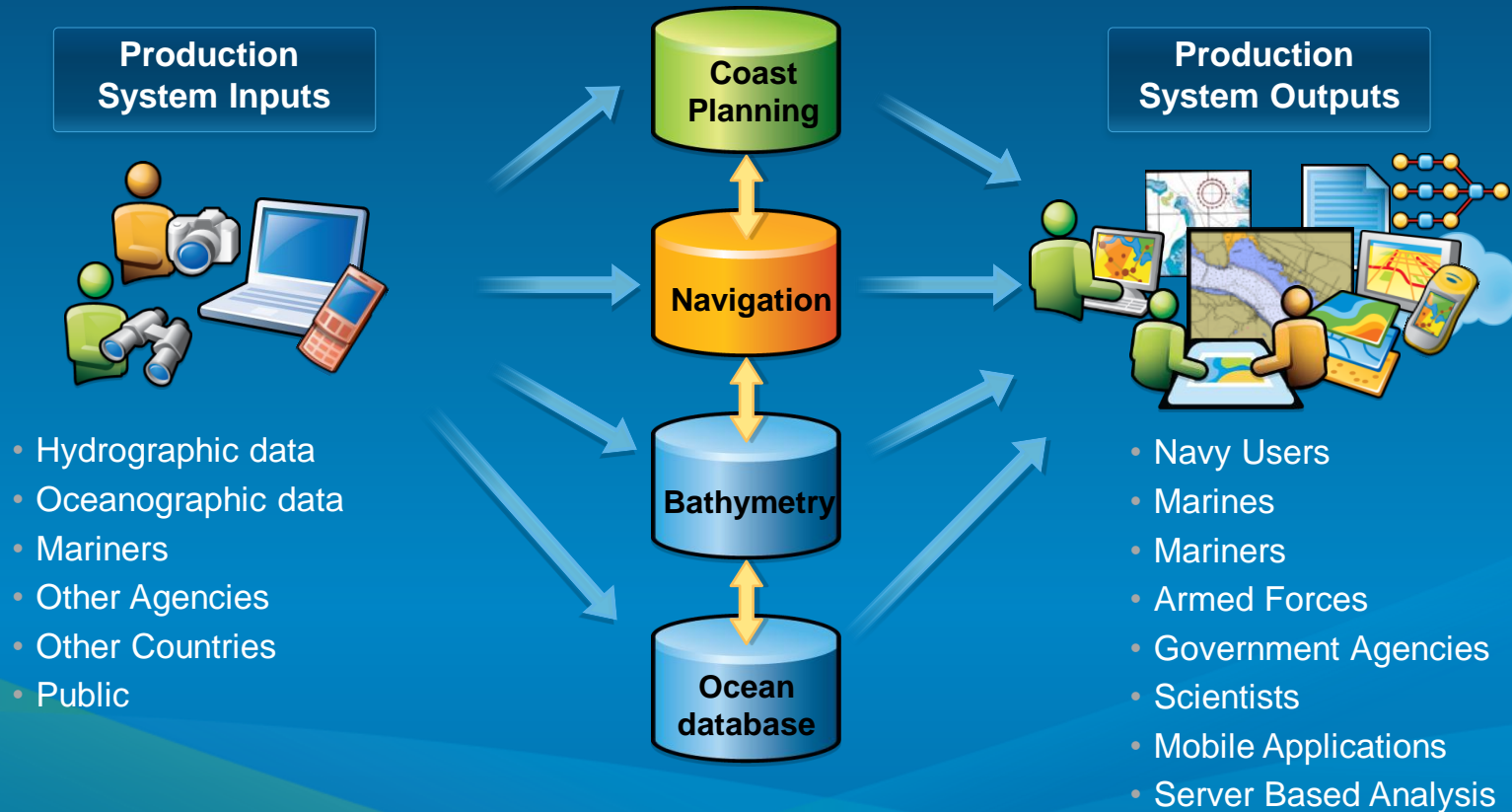


How a Marine SDI is built



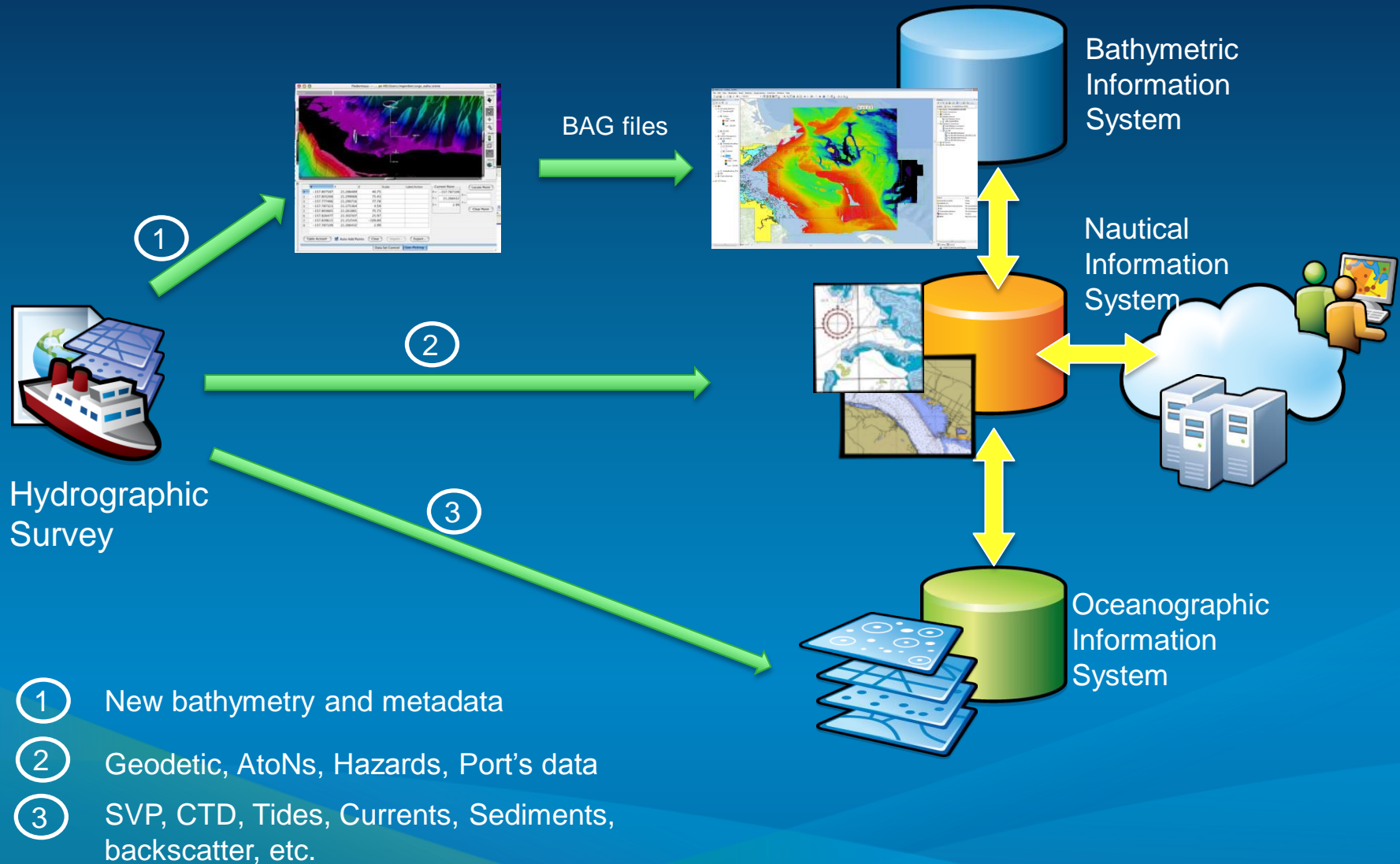
A Marine GIS as the Core of MSDI

Marine Data Management System

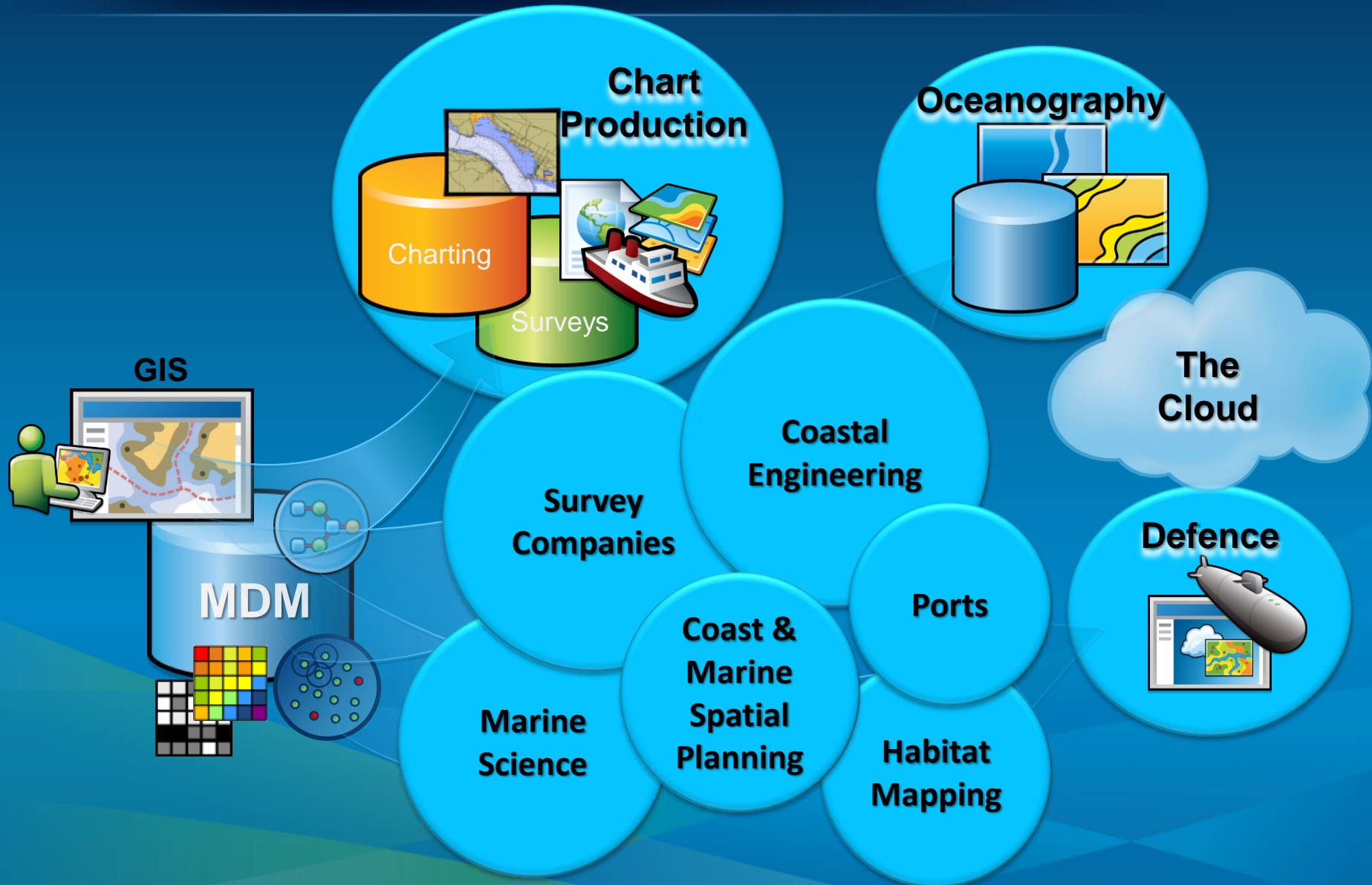


• ...Interoperability, flexibility and scalability

A Maritime Data Management System



Hydrography is more than charts



Sharing through ArcGIS Online:

<http://esriho.maps.arcgis.com/home/index.html>

Telling your story with Story Maps

- Top 10 Hurricanes in the US: <http://storymaps.esri.com/stories/2012/top-ten-hurricanes/>
- Coral Reefs at Risk:
- http://www.arcgis.com/apps/Compare/storytelling_tabbed/index.html?appid=f537896f8e30481e901938eb049a73a0



esri

Thank you

rponce@esri.com