



SHIP2 project

SHIP2

=

**System for Hydrografic Information Processes
(part 2)**

SHIP2 project = design, realisation, implementation
of an integrated production system for NLHO

Past

1994 - 1996: Business Process Redesign study

- NLHO Product \Rightarrow Proces oriëntated

1995 - 1998: SHIP1

- New system for production analogue charts

1998 -1999: IOP SHIP2 (interim solution= present)

- Millennium challenge, separate ENC production

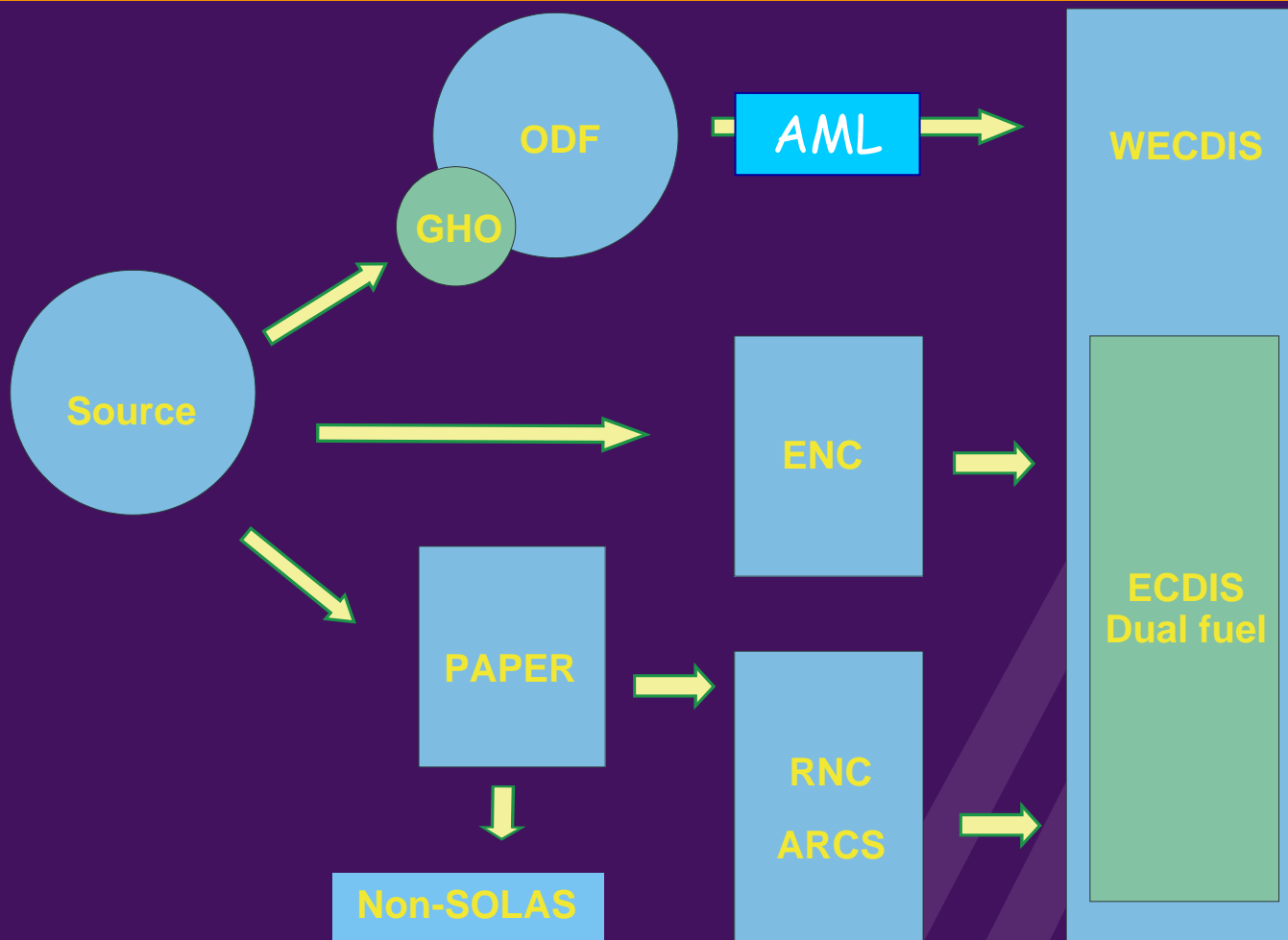
Weaknesses present system

- Loose components
- Communication between systems and databases
- Difficult to have control over processes. Prone to errors.
- Maintenance
- Only civil products (not military). GHO-tasks
- Insufficiënt support ENC-production

Key-principles SHIP2

- Multi-product – products from one database. All same information.
- Object oriented – intelligent way of storing data by keeping all properties
- Unambiguous data storage in one central database

Key-principles SHIP2



SHIP2

Started **1998** project Naval Material Directorate

Phases:

- Definition
- Evaluation (choice of supplier core components: Caris)
- Realisation (present)

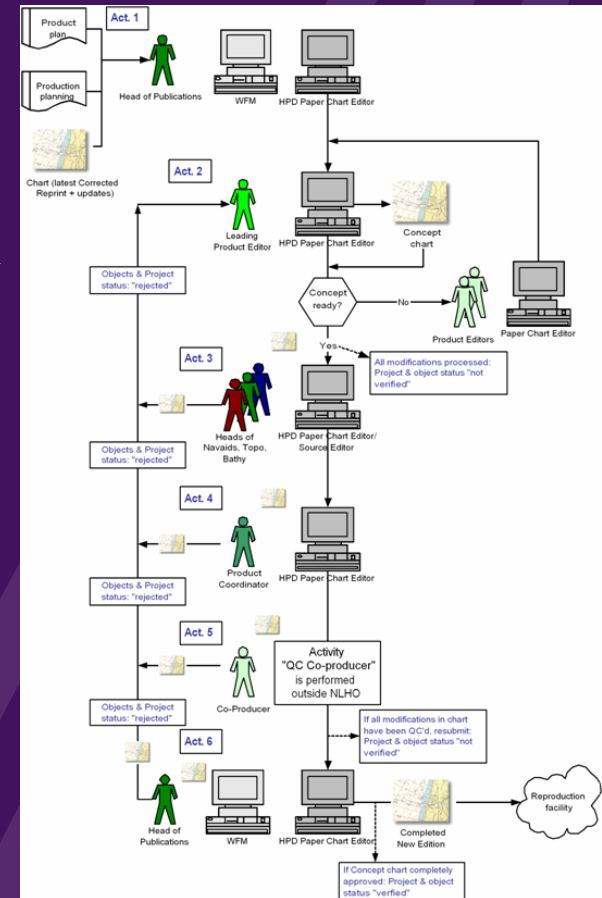
Long delays

organizational, financial, technical, contractual issues

Present

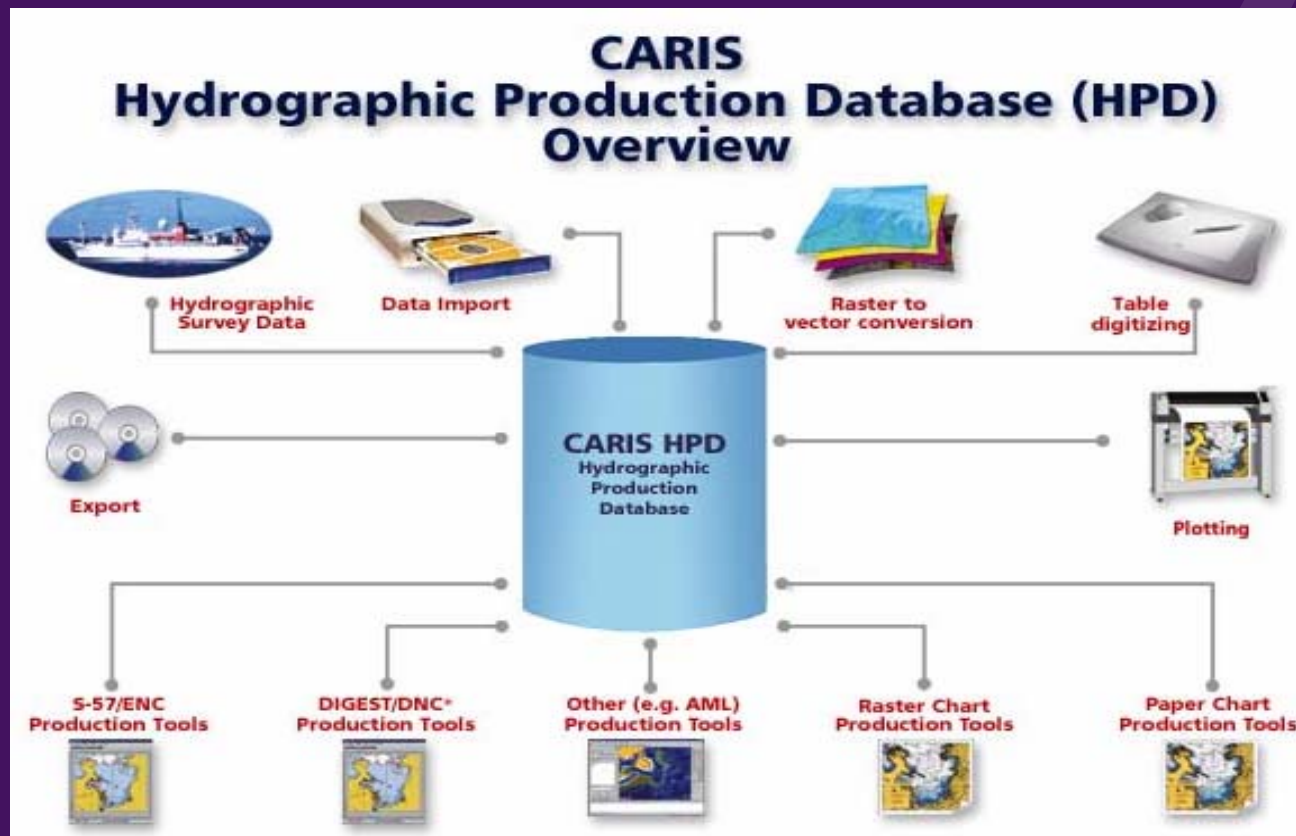
Realisation phase

- Proces modelling
- Data conversion
- Configuration
- Integration
- Choosing non CARIS components



Caris HPD

- Core component SHIP2
- Central database for sourcedata and products



Screenshots HPD (1)

HPD Source Editor

CARIS HPD Source Editor - [HYD.KM - Zuidelijke Noordzee]

File Create Edit View Tools Select Usages Certify Window Help

[Follow Select Layer]

HPD

- Overview(500000-1000000)
- General(100000-499999)
- Coastal(35000-99999)
- Approach(5000-34999)
- Harbour(2500-4999)
- Berthing(1-2499)
- Result
- Source
- Markers

Layers Draw Order Markers

Feature Count 5,691
Show End Nodes
Transparency 0
Symbolization Scale Fixed

Properties

Acronym	Name	Geometry	Latitude	Lo	De	Object Ty	Acronym	Name	Value
BOYLAT	Buoy, lateral	Point	51-31.690N	00		Geographi	BOYSHP	Buoy shape	can (cylindrical)
BOYLAT	Buoy, lateral	Point	51-31.690N	00		Geographi	CATLAM	Category of lateral	port-hand lateral
WRECKS	Wreck	Point	51-31.484N	00		Geographi	COLOUR	Colour	3
DEPCNT	Depth contour	Line				Geographi	COLPAT	Colour pattern	
DEPCNT	Depth contour	Line				Geographi	CONRAD	Conspicuous, radar	
DEPCNT	Depth contour	Line				Geographi	DATEND	Date end	
DEPCNT	Depth contour	Line				Geographi	DATSTA	Date start	
DEPCNT	Depth contour	Line				Geographi	MARSYS	Marks navigational	
DEPCNT	Depth contour	Line				Geographi	NATCON	Nature of construct	
DEPCNT	Depth contour	Line				Geographi	NOBINM	Object name in nati	
SOUNDG	Sounding	Sounding	51-31.555N	00	1.2	Geographi	OBUNAM	Object name	GR 4
SOUNDG	Sounding	Sounding	51-31.491N	00	1.	Geographi	PEREND	Periodic date end	
							PERSTA	Periodic date start	

Attributes Representations Components Relations History Markers

Ready Selected: 12 WRLDMERC 1:112788 51-28.985N 003-21.501E

Start CARIS HPD Source Edit... 3:23 PM

Screenshots HPD (2)

HPD Paper Chart Editor

CARIS HPD Paper Chart Editor - [Sheet View]

File Create Edit View Tools Select Certify Window Help

Chart 1:Sheet 1:Panel Main

Times New Roman B I U

Chart 1

- Sheet 1
 - Panel test
 - Panel Data
 - Deleted Objects

Layers Draw Order

Acronym	Name	Value
PANNAM	Panel Name	test
PANNUM	Panel Number	1
PANPOS	X,Y Offset (mm)	0,0
PSCALE	Scale	10000
PRJCTN	Projection	MERCATOR,0.00
CAHDAT	Horizontal Datum	WGS84
PANTYP	Type of Panel	
PANTIT	Panel Title	
PRONAM	Projection Name	

Sheet View

Feature ID	Acronym	Name	Geometry	X
NL_0000006101_00001	SLCONS	Shoreline Con Line		

Composite Edge

- Edge Forward
- Edge Forward, Masked
- Edge Forward

Coordinates Features Spatial Attributes

Attributes Representations Components Relations History

Range select: Hold left mouse button and drag Selected: 1 MERCATOR 52:06:23.89N 004:15:43.08E

Start Document1 - Micro... F:\TLDB Administration Tools CARIS HPD Paper ... 4:58 PM

Screenshots HPD (3)

HPD ENC Editor

CARIS HPD S-57 ENC Editor - [HYD.KM - MondingHoekvHolland]

File Create Edit View Tools Select Certify Window Help

[Follow Select Layer]

HYD:MondingHoekvHolland Edition

- All Data
- From Source
- Product Specific
- Deleted Objects

Layers Draw Order

Feature Count: 84
 Show End Nodes:
 Transparency: 0
 Symbolization Scale: Fixed
 Sounding Feature Co:
 Sounding Size: 1.45
 Sounding Colour Ran:

Properties

Feature ID	Acronym	Name	Geometry	Latitude	Lo	Acronym	Name	Value
NL 000026605 00001	LNDMRK	Landmark	Point	51-58-52.98N	004	CATLMK	Category of landma	17
						COLOUR	Colour	1,2
						COLPAT	Colour pattern	1
						CONDITN	Condition	
						CONRAD	Conspicuous, radar	
						CONVIS	Conspicuous, visua	visually conspic
						ELEVAT	Elevation	
						FUNCTN	Function	33

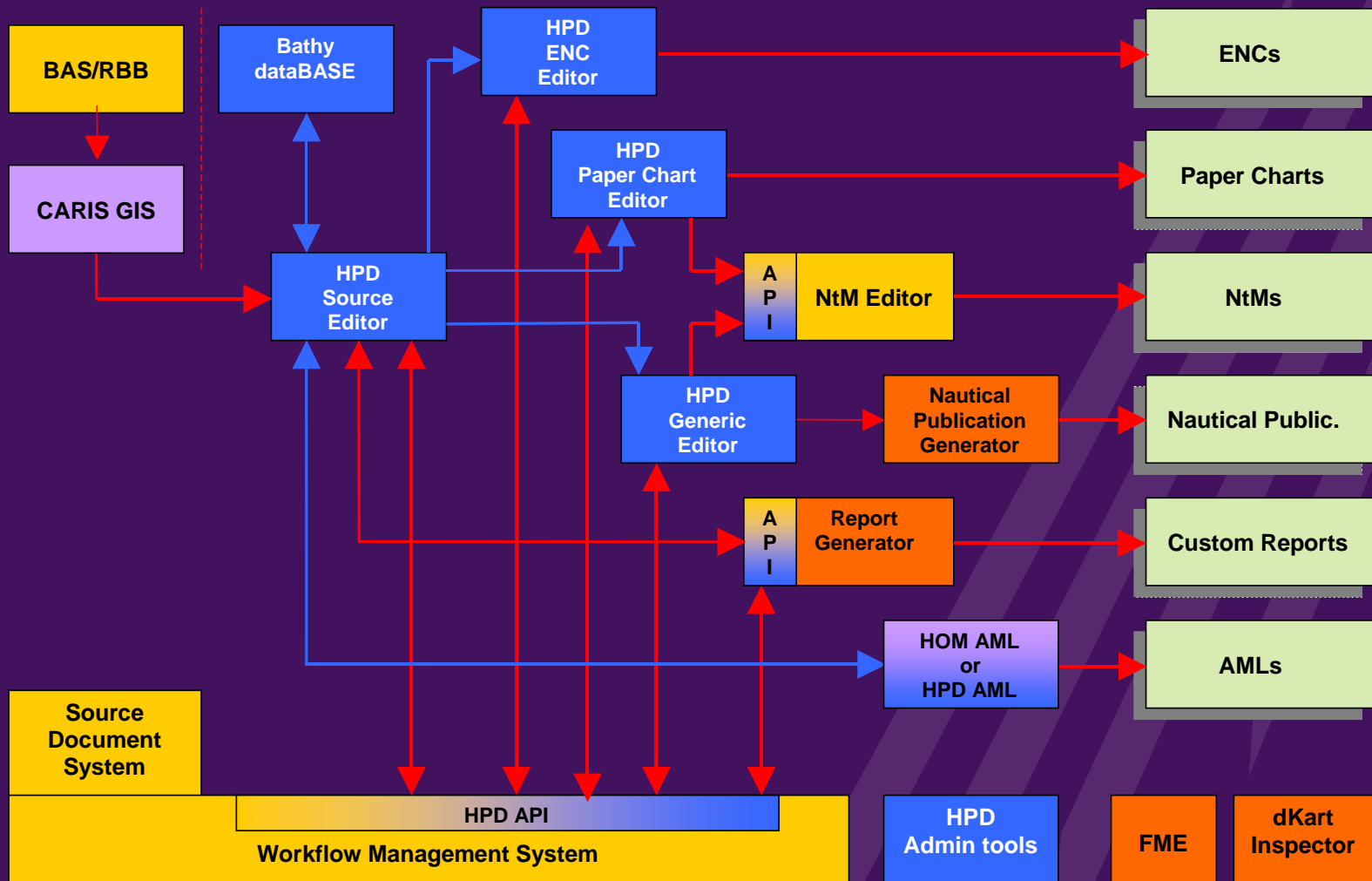
Attributes Components Relations History

Range select: Hold left mouse button and drag

Selected: 1 | WRLDMERC | 1:12651 | 51-58-23.39N | 004-05-14.12E

Windows Task Manager | CARIS HPD S-57 ENC E... | 3:30 PM

Functional components SHIP2



Other SHIP2 components

- Bathymetric Editor and storage (evt. HPD)
- NtM Editor
- Report and HP Generator
- Sourcedocument system
- Workflow Management system

Options still open

Challenges near future

- Decide on key issues
 - Data conversion
 - Bathy database or existing database
 - Transitions strategy
- Continuation of “regular” production while implementing
- Making things work

Planning near future

- Any moment now: sign contract
- November 2006: start of traject
- Januari 2009: Accepted SHIP2 system