

Production of Inland ENC's by the Belgian HO

In 2009 the Belgian HO "Flemish Hydrography", an entity of the coastal division of the agency for Maritime Services and Coast, has started to adapt her cartographic production environment in order to be able to produce Inland ENC's for some waterways in Belgium.

The Flemish Hydrography will produce Inland ENC's for the maritime navigation channels where also inland navigation is active: Coastal harbours (Port of Ostend and Port of Zeebrugge), Sea-channel Gent-Terneuzen (incl. Port of Ghent), River Scheldt (between the Dutch border and the Lock Wintam).

Fig. 1 gives a an overview of these maritime navigation waterways.

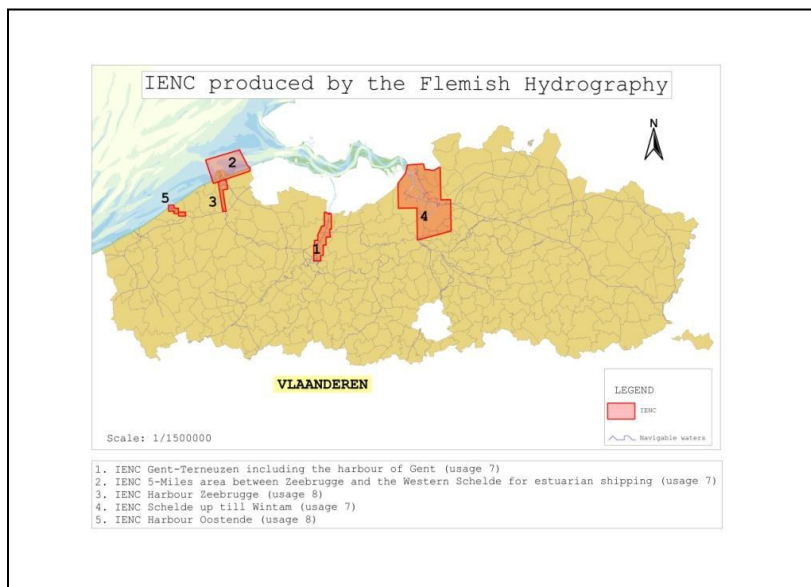


Fig 1. Maritime navigation channels with also inland ship traffic

In 2010 the production of a first Inland ENC has started up, with the Caris software. The production environment will be further optimized in 2010 and 2011.

Fig. 2 – 4 give an example of a preliminary version of the inland ENC for the sea-channel 'Kanaal Gent – Terneuzen'.



Fig 2 Sea Channel 'Kanaal Gent – Terneuzen'

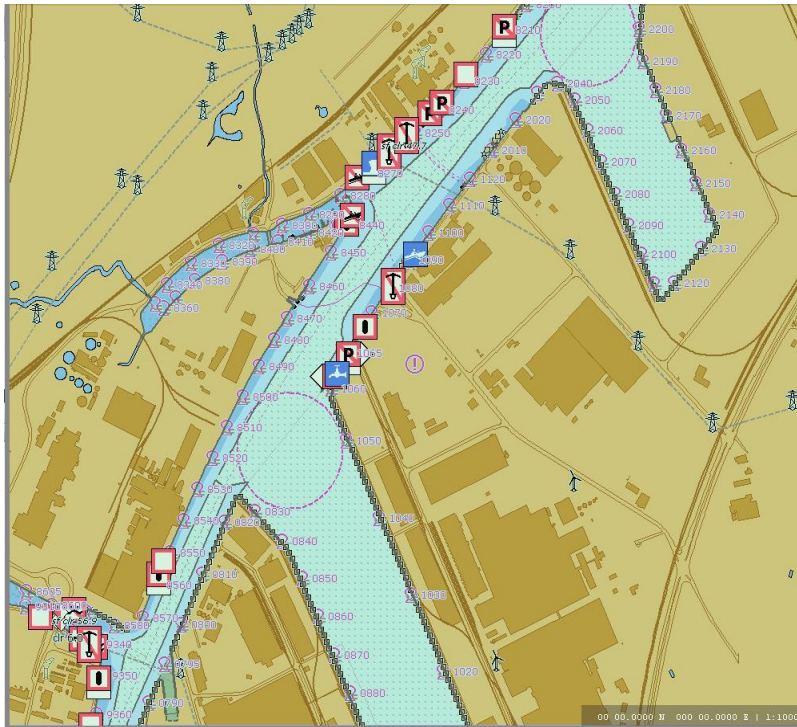


Fig 3 Sea Channel 'Kanaal Gent – Terneuzen' – detail

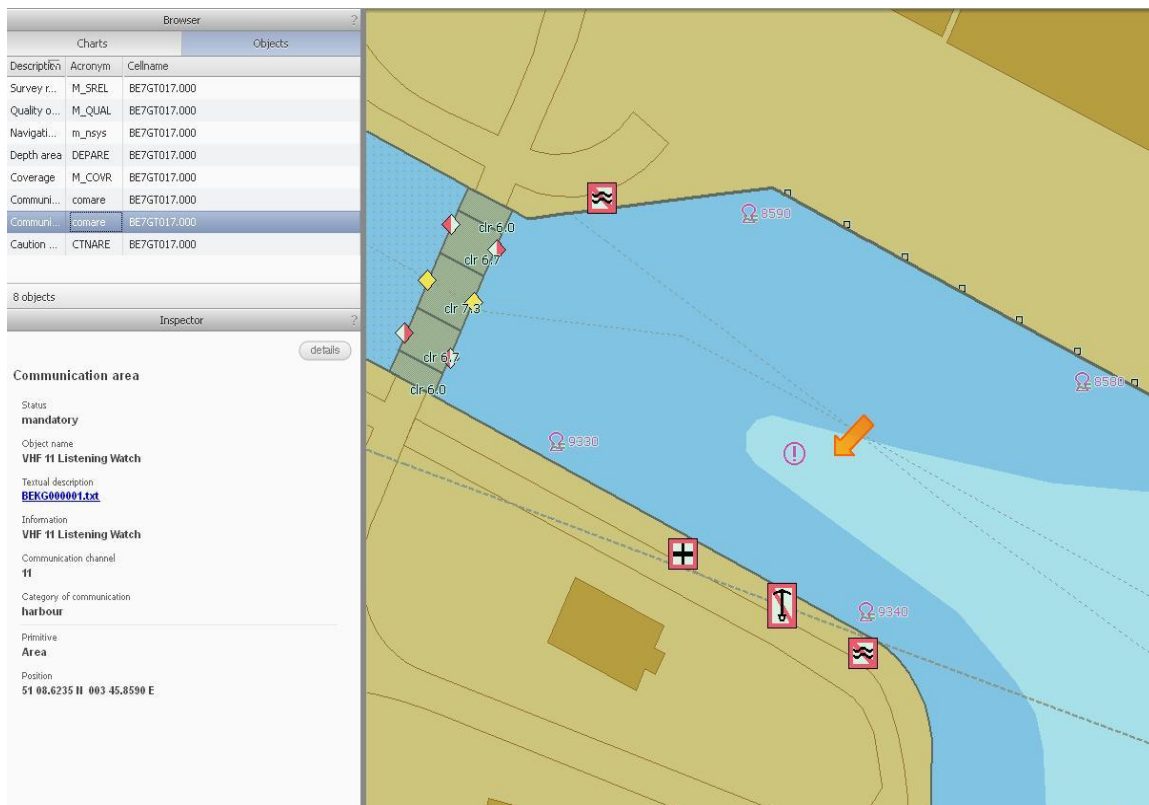


Fig 4 Sea Channel 'Kanaal Gent – Terneuzen' – detail