

Litto3D®

SHOM's coastal survey in Normandy & North of France

Litto3D: a definition

*to create a continuous dataset on earth and at sea, by
airborne bathymetric lidar*

Litto3D® - Coverage on French coasts



 to be surveyed

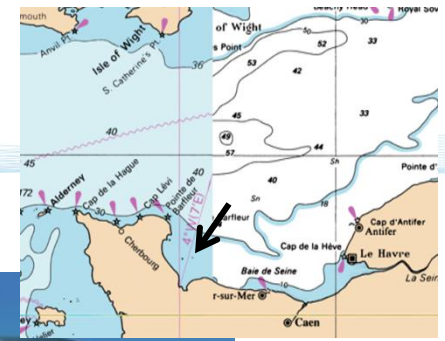
 already surveyed

Litto3D® maritime coverage

35% French continental coverage

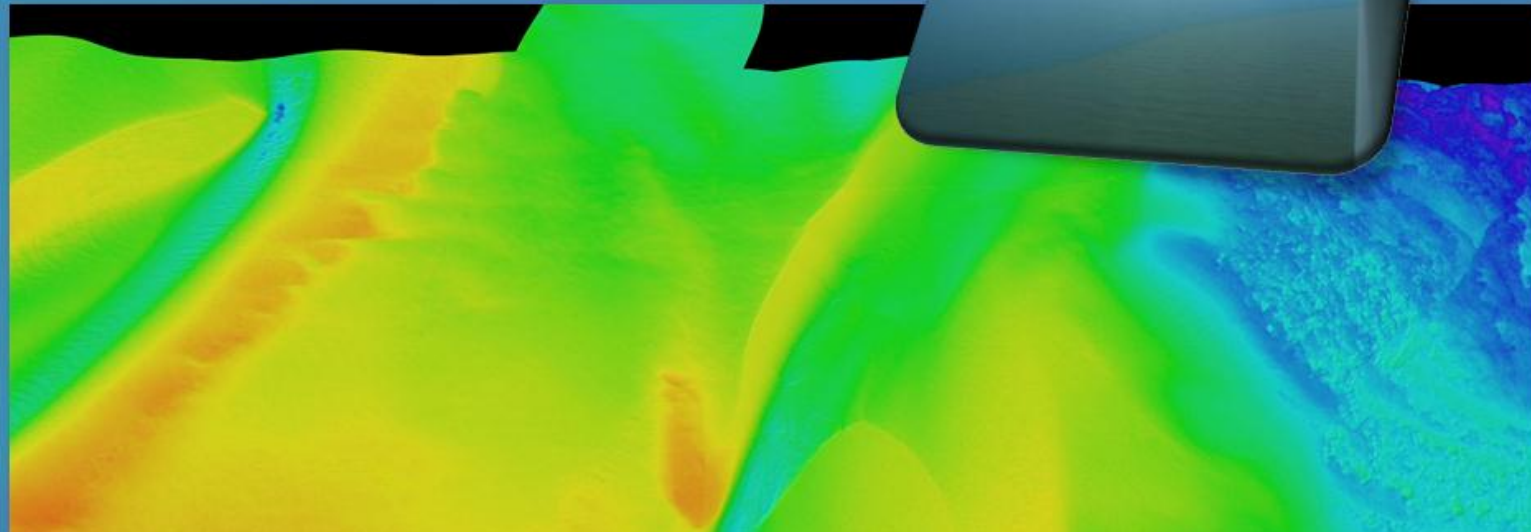
Still to cover 65%

57% French overseas territories
(82% without French Guyana)



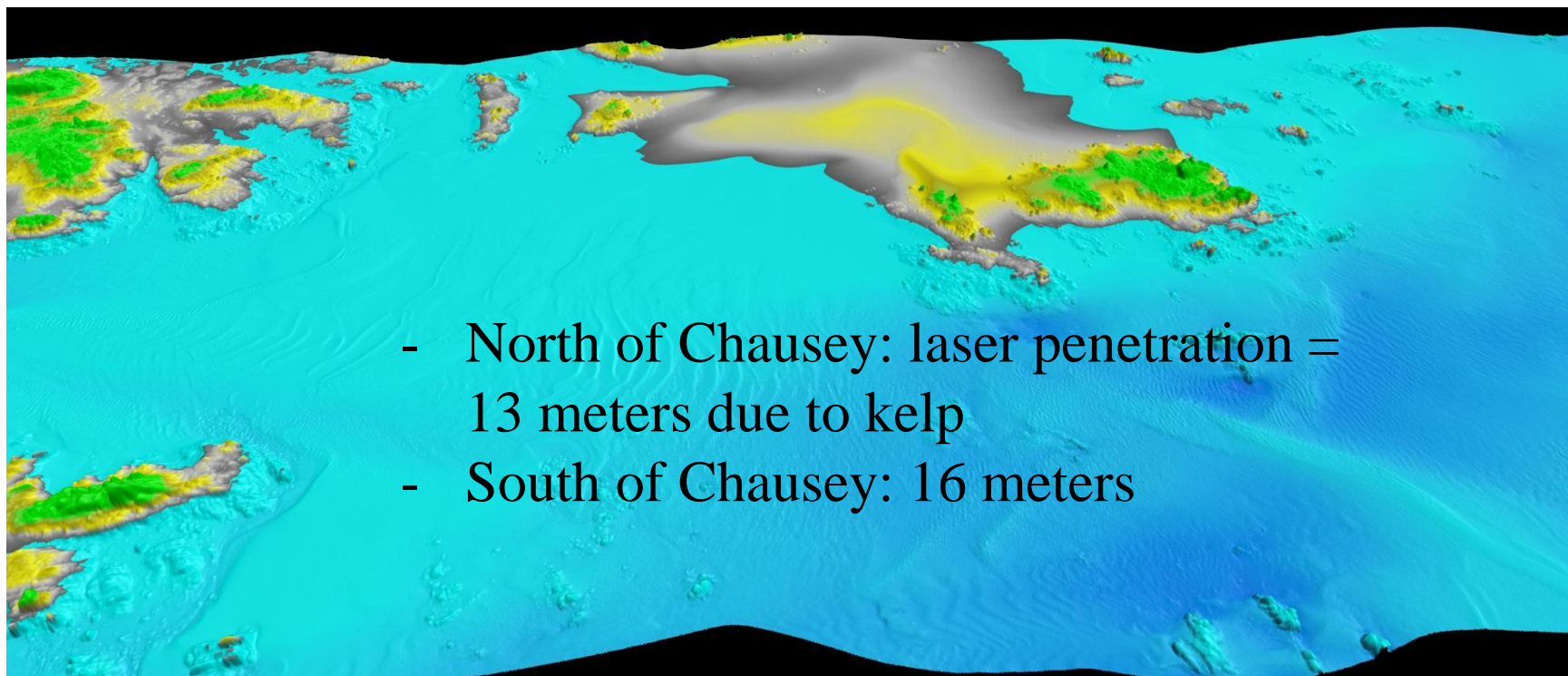
Application to turbid areas

Turbidity



- ***Feasibility study was conducted in April 2015, using the AHAB-Leica HawkEye III machine → surprisingly good results i.e. 7m penetration in turbid areas like “Baie des Veys”***
- ***Similar results in Courseulles (D-Day beaches) and Deauville (west of Seine’s mouth)***

Some very good results in places (Iles Chausey as an example)



Survey from Baie du Mont-Saint-Michel (western Normandy) to the Belgian border

- *Positive results led us to schedule a major operation along the Channel coastline*
- *Starting in August 2016. Results expected for mid-2017*
- *Target: 5m isobath and up to 400m inland*
- *Support of the ministry of environment + regional organisations*

