



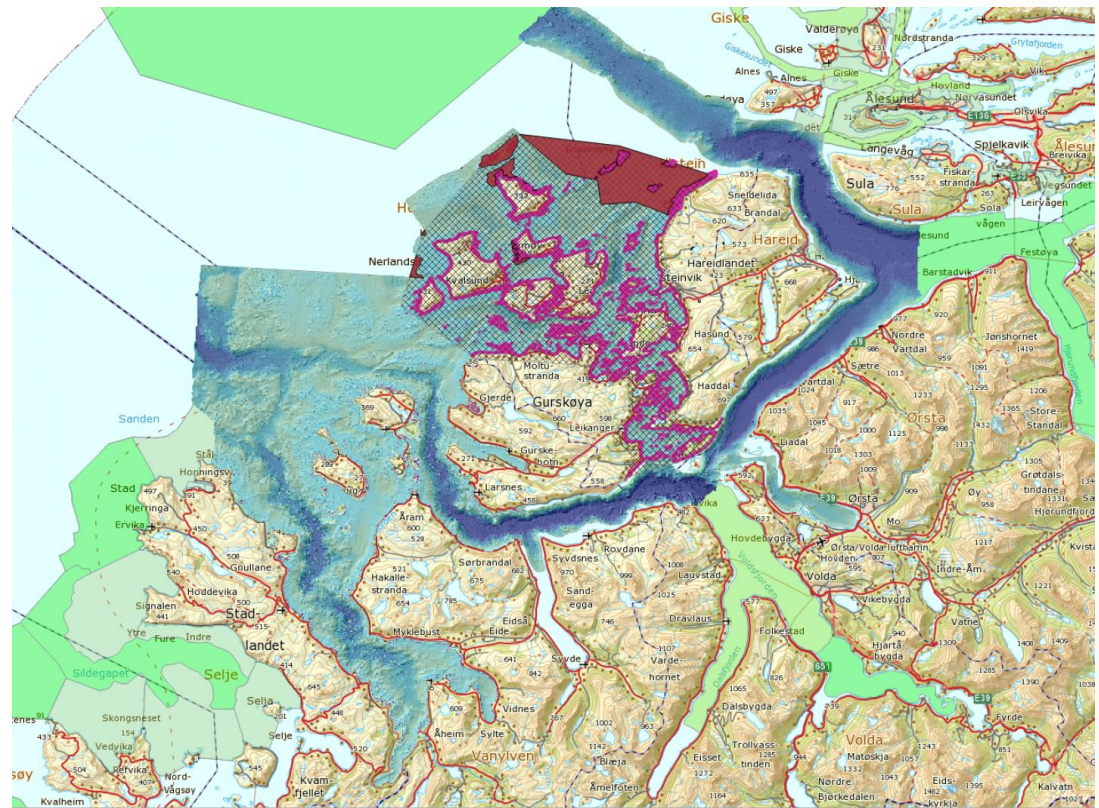
Kartverket

Southern Sunnmøre – Three projects

*Noralf Slotsvik
Norwegian Hydrographic Service
NSHC, 21-23 June 2016*



The Project Area



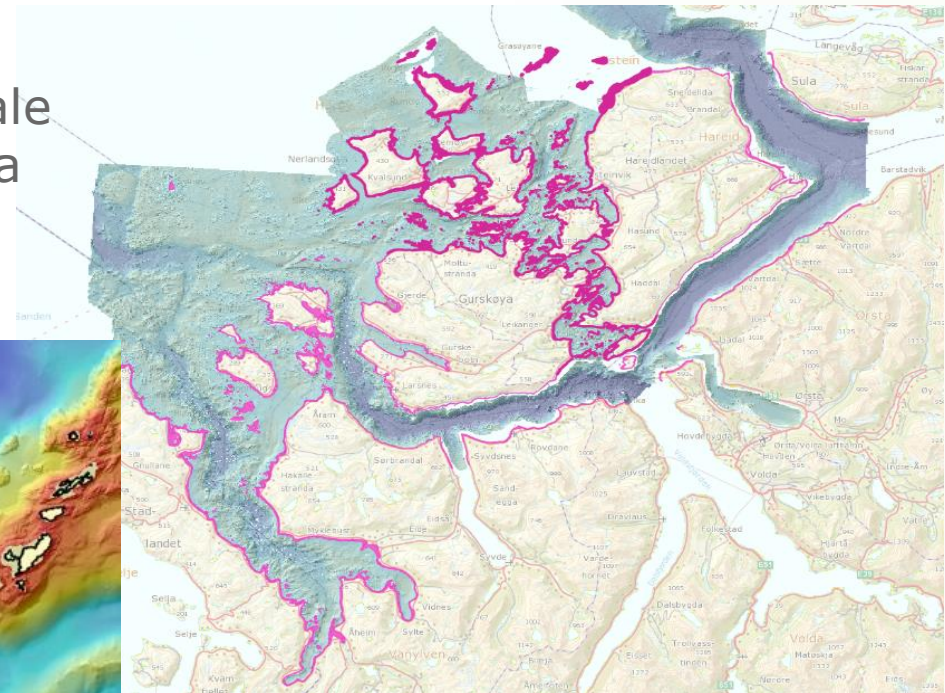
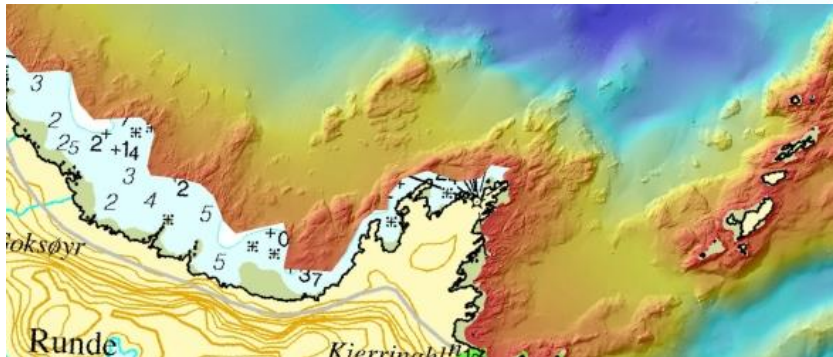
Three projects

- **Green Laser Søre Sunnmøre (GLaSS)**
 - **Close the gap between the existing data in the maps and the navigational charts**
- **Visualization of Sea Level**
 - **Planning and visualization tool which couples the future sea level rise, the tidal levels and the extreme levels connected to storm surges with land uplift and detailed terrain models**
- **A Common Reference Frame in the Søre Sunnmøre Area**

GLaSS

Requirement: Should give adequate coverage down to 5 meters below Chart Datum

Gain experience for large scale projects for integration of sea and land



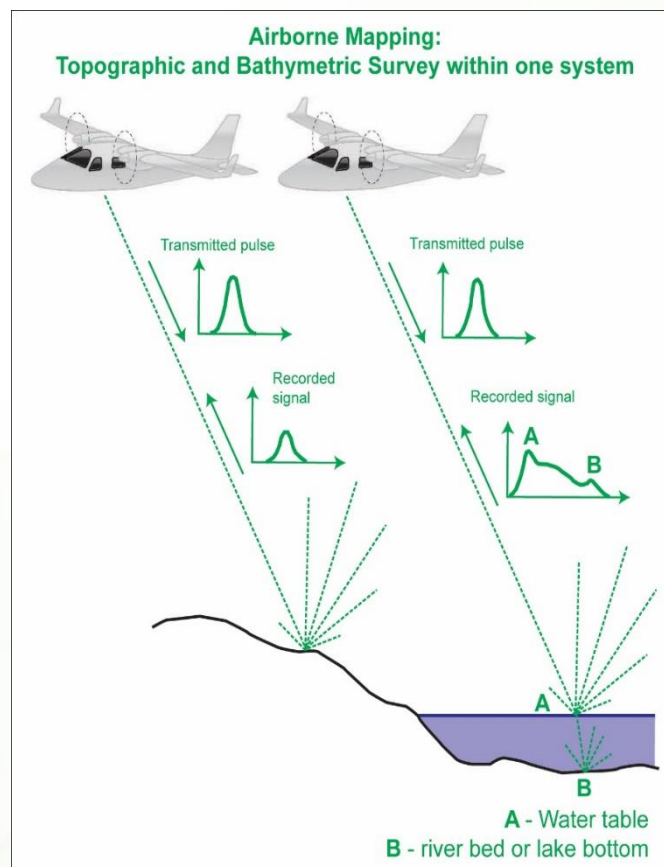
GLaSS - deliveries

- **Laser scanning of 90km²**
- **Processed and classified data**
- **Seamless sea/land terrain models for parts of the area**



GLaSS: Schedule and status

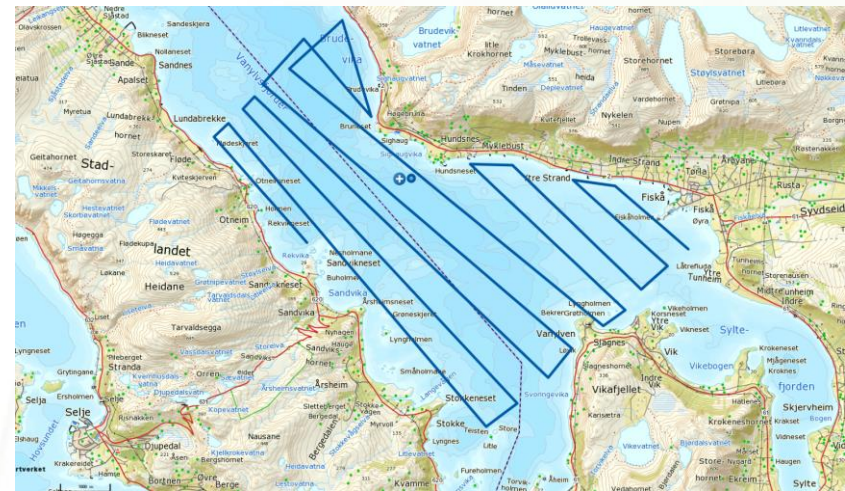
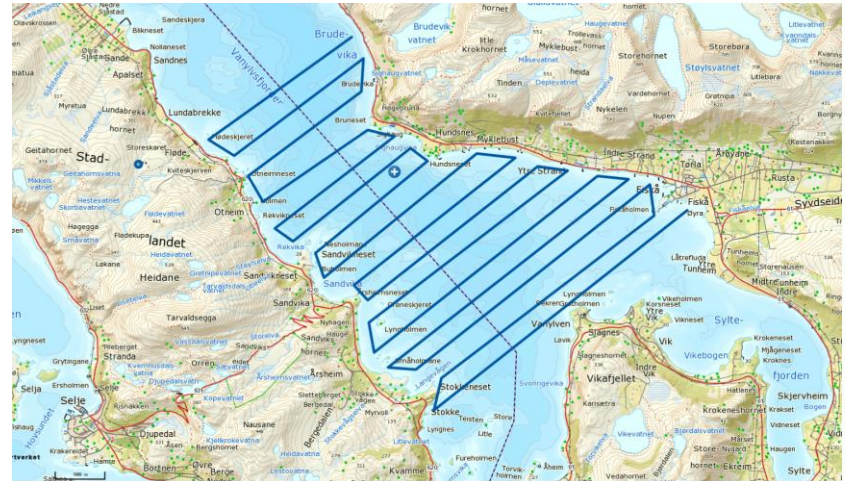
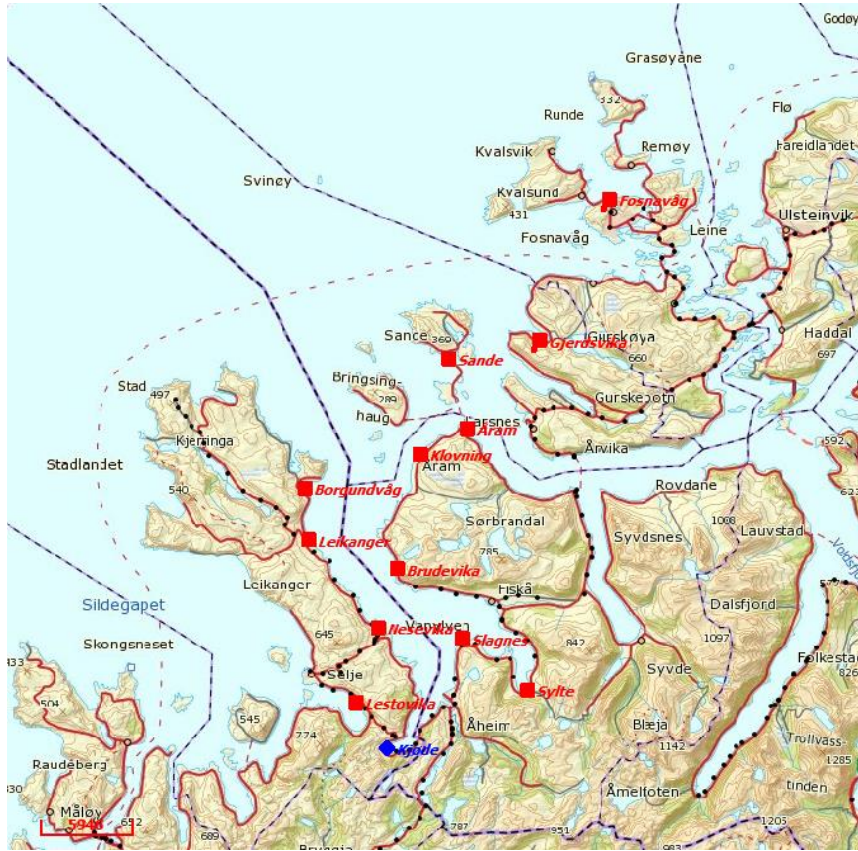
- **June 2016:**
Second time Call for Tender
- **September 2016:**
Contracting and start-up
- **April 2017:**
End of data acquisition
- **September 2017:**
Delivery of processed and classified data
- **Autumn 2017:**
Quality control and analyzes.
Production of terrain models



A common Reference Frame - the Objective of the Project

- The objective of this project is to determine the relationship between the official height reference system used in maps and the Chart Datum used in the official nautical charts
- Develop a method that can be used along the entire Norwegian coast

Fieldwork



Thank you for your attention!

