

QPS PRODUCTS

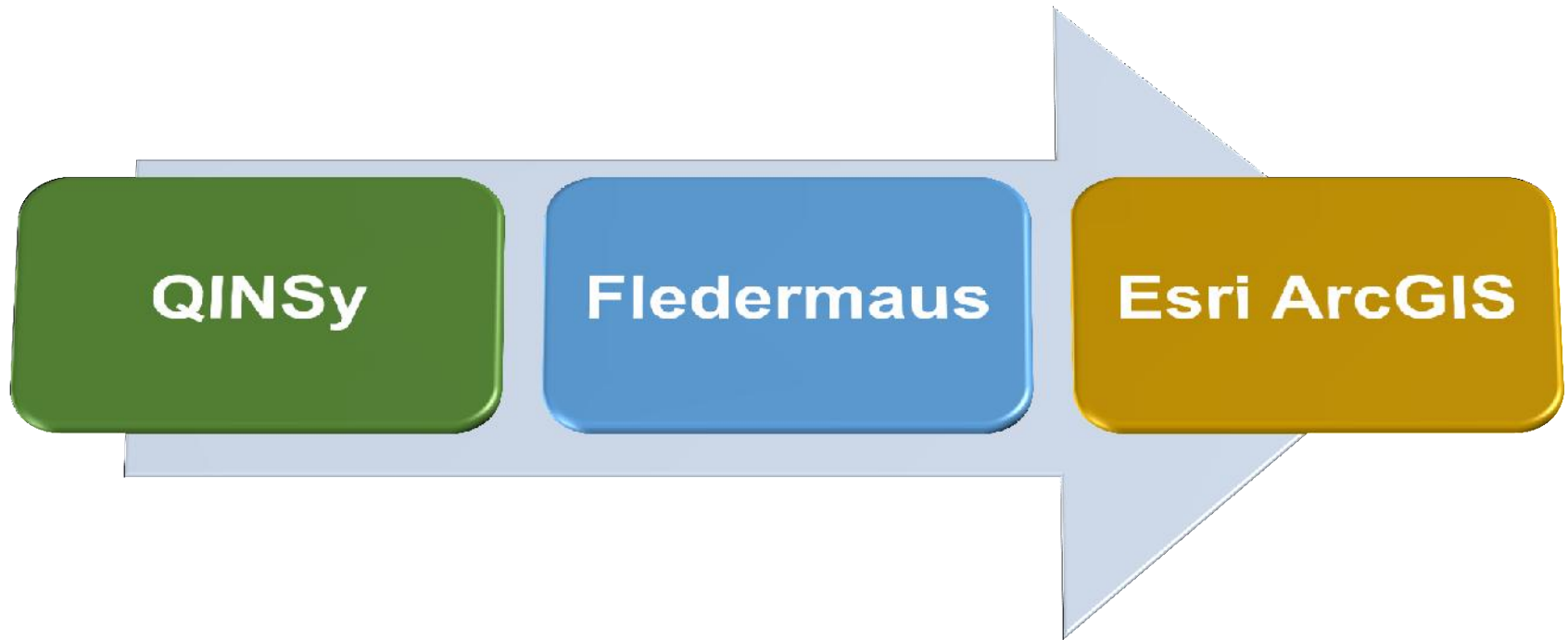
Richard HILL

(QPS Marketing and Sales)

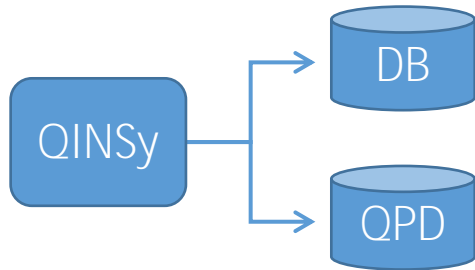


SAAB
Defence and Security

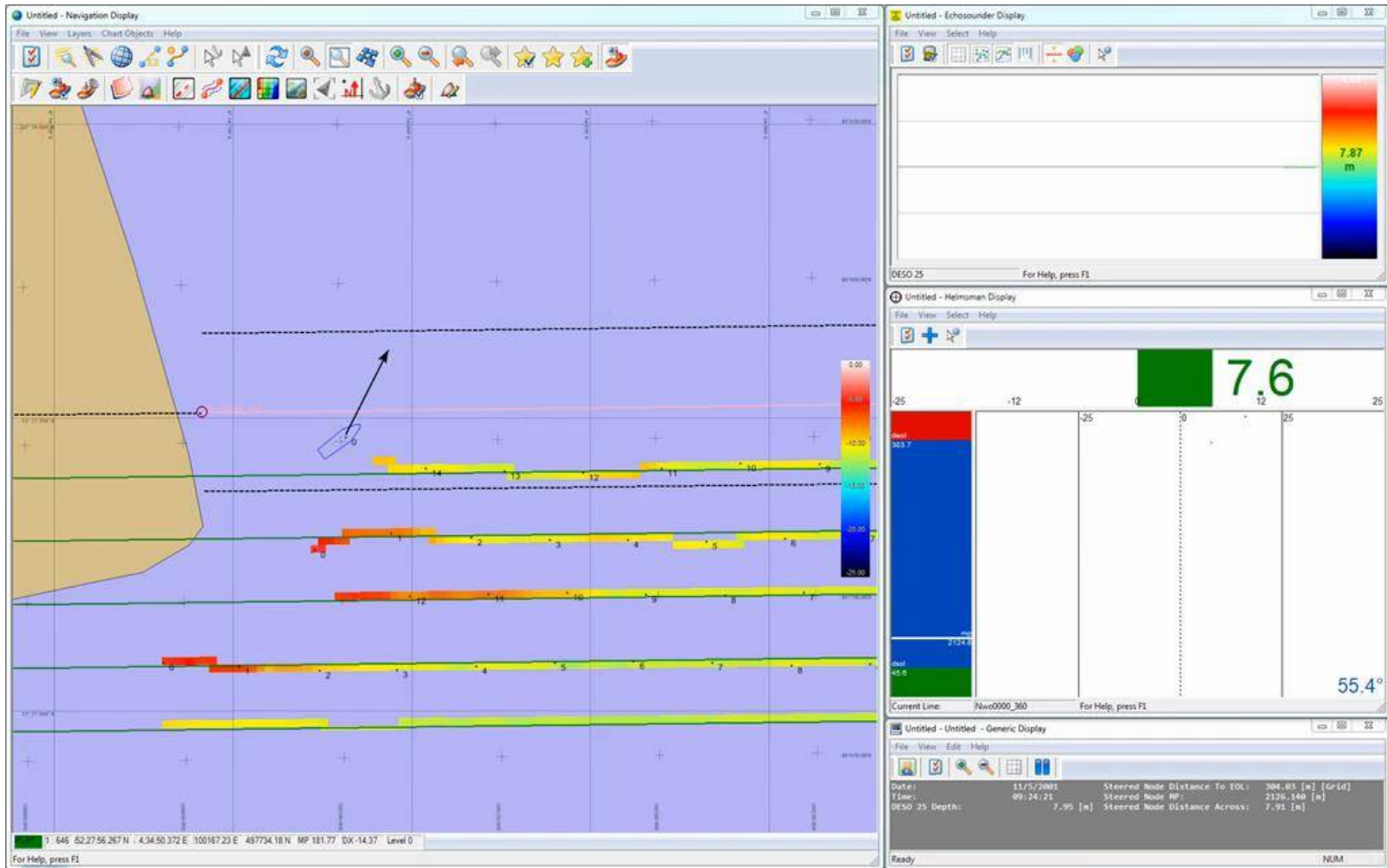
Seamless Workflow



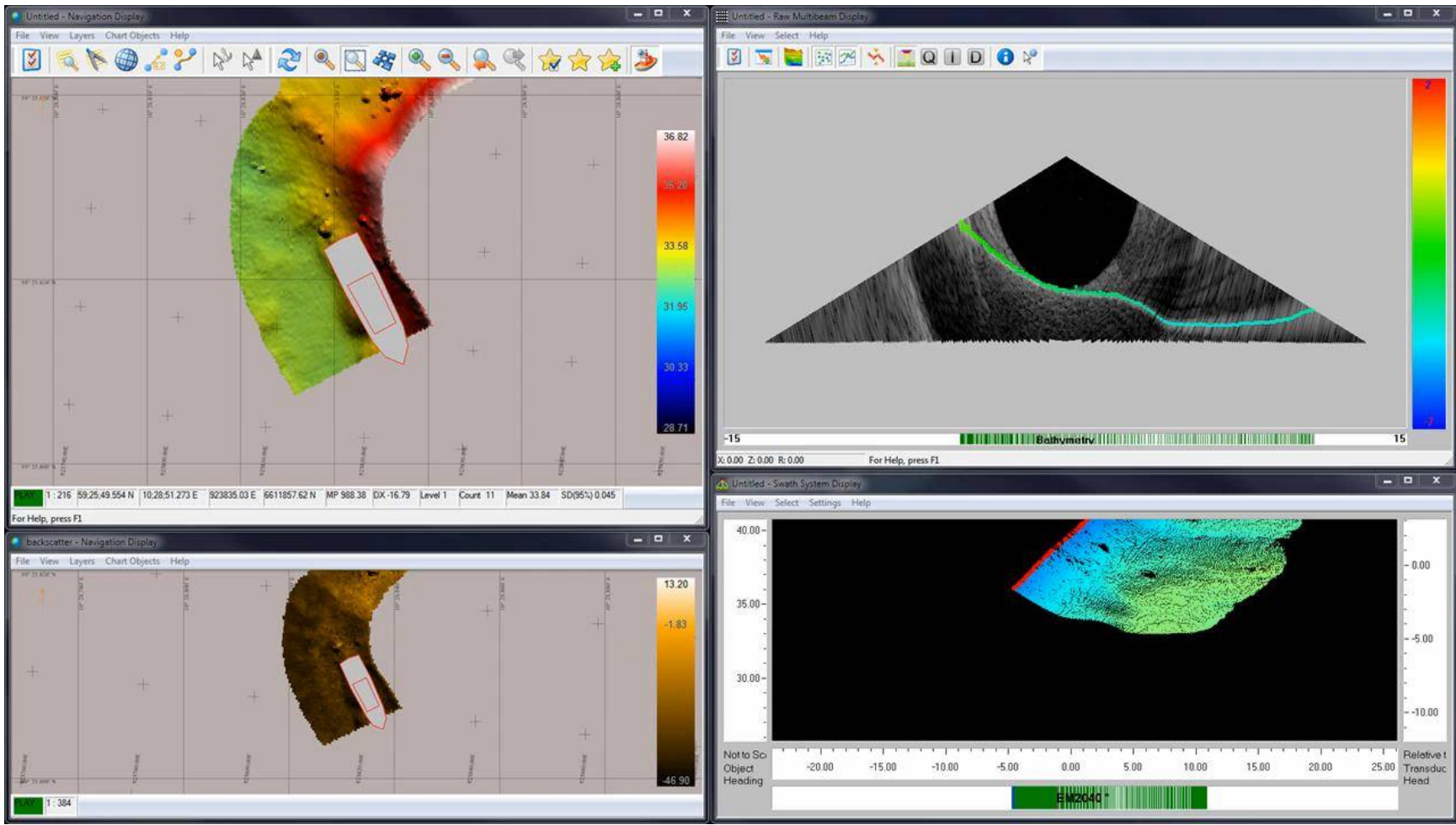
Workflow - acquisition



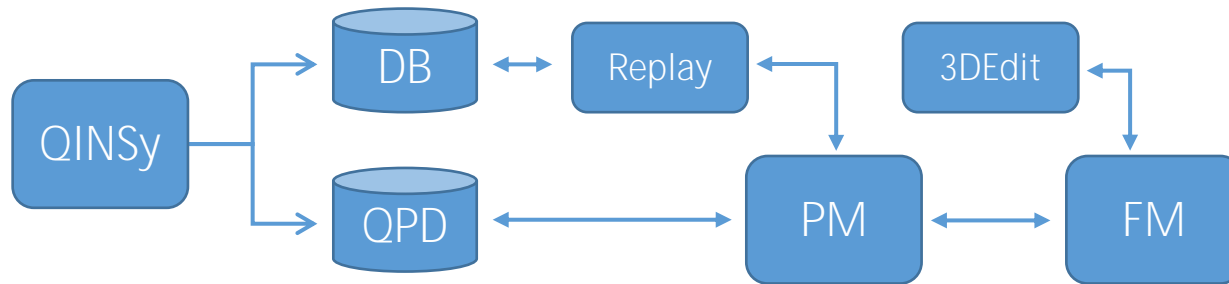
QINSy INSHORE for SBES



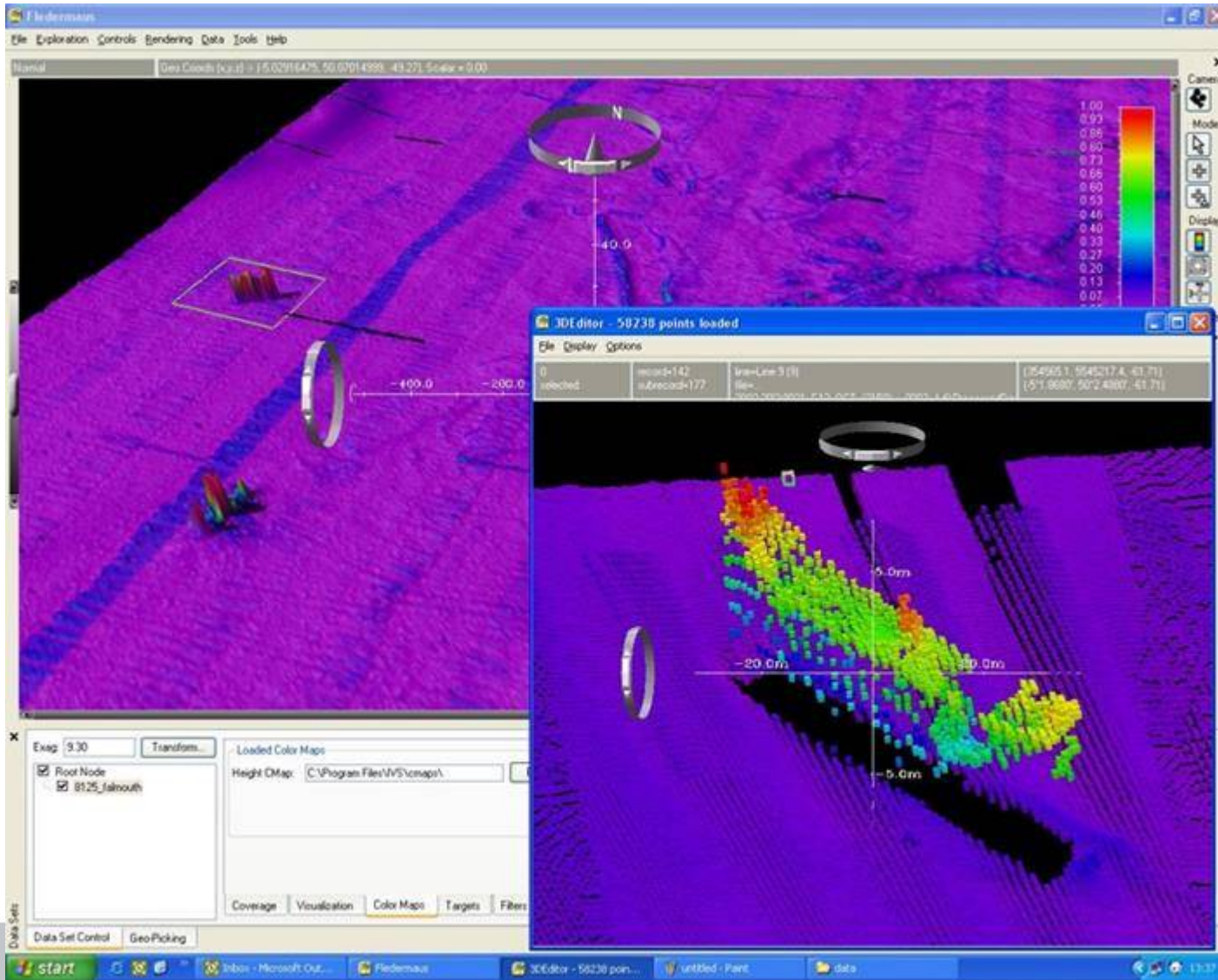
QINSy for Multibeam



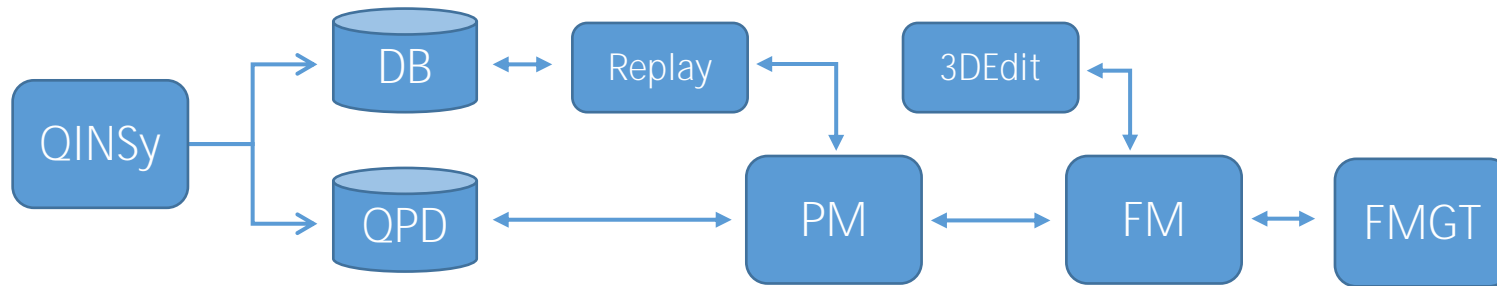
Workflow - validation



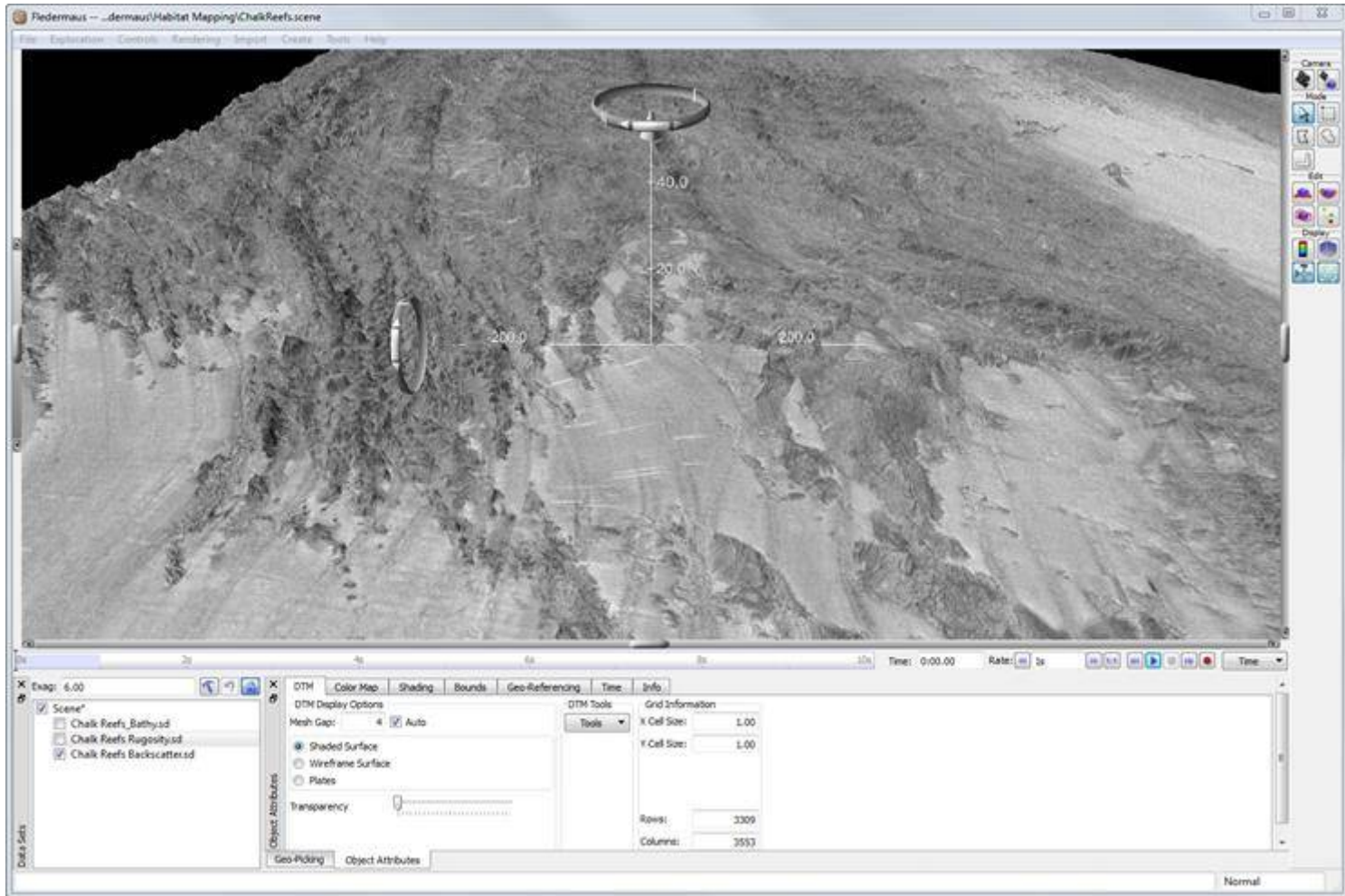
Workflow - validation



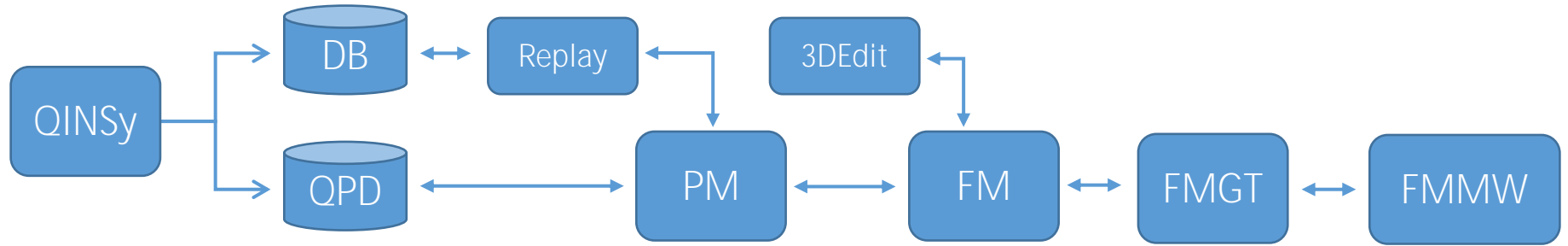
Workflow - backscatter



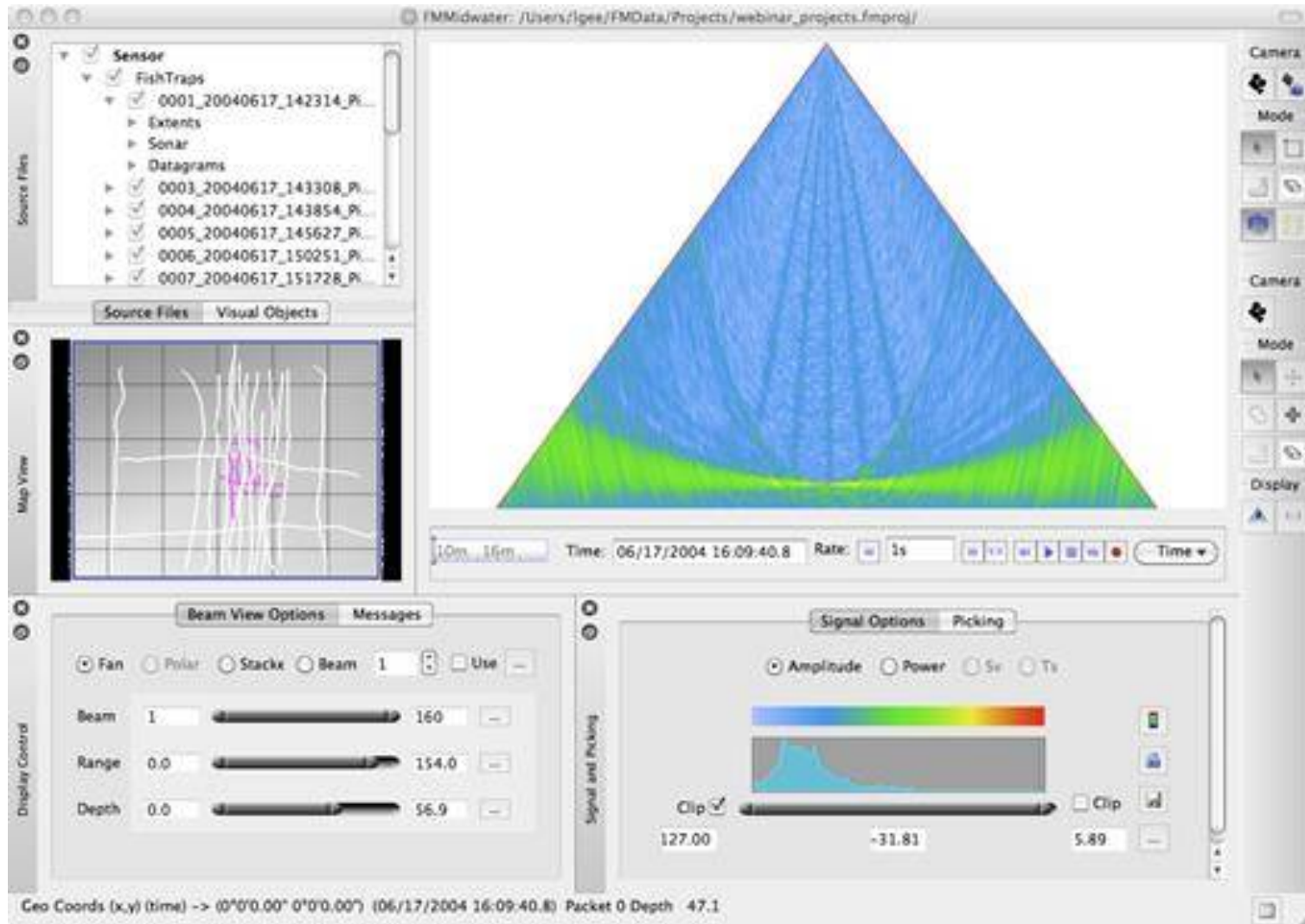
Workflow - backscatter



Workflow - watercolumn

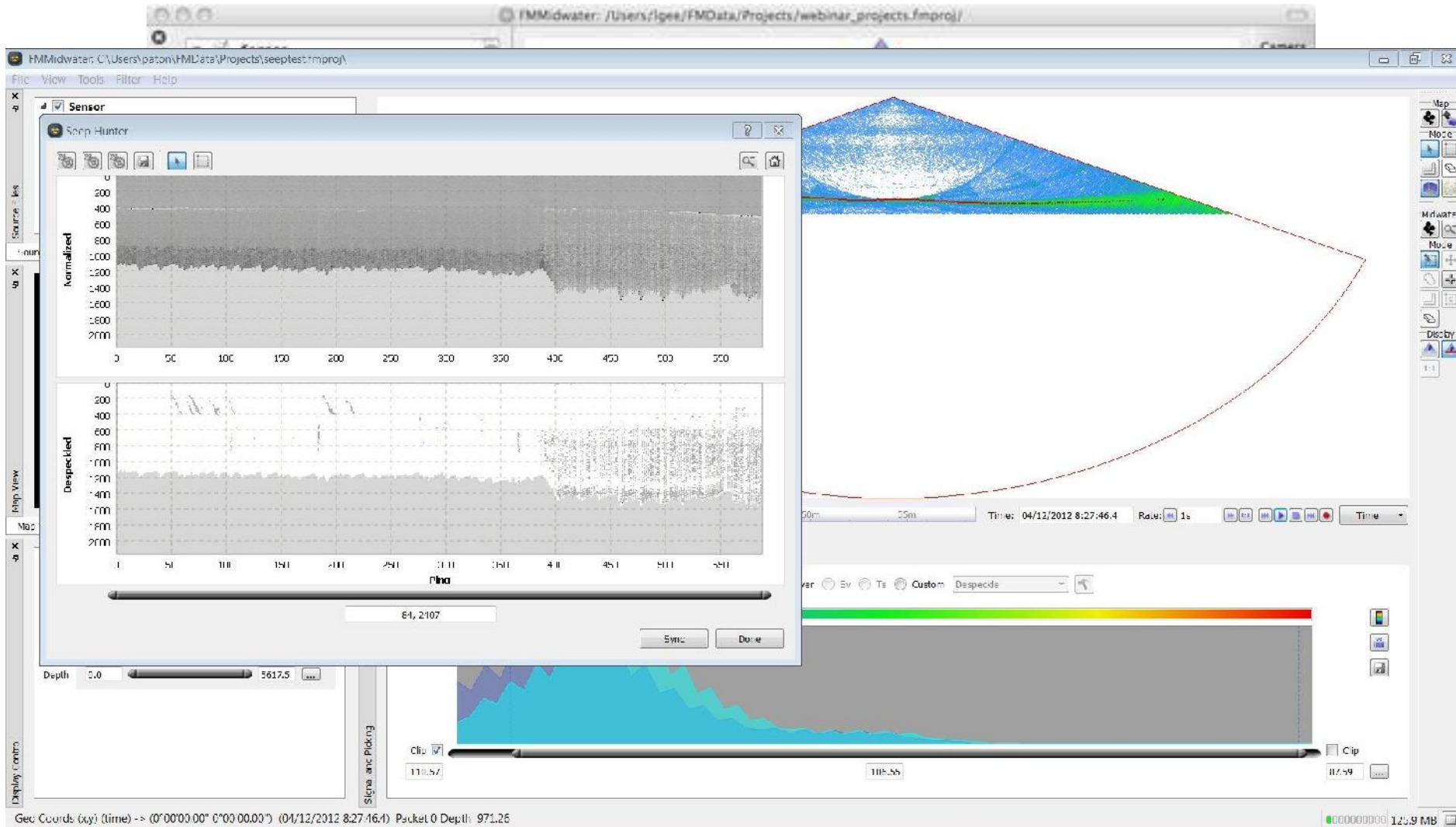


Workflow - watercolumn



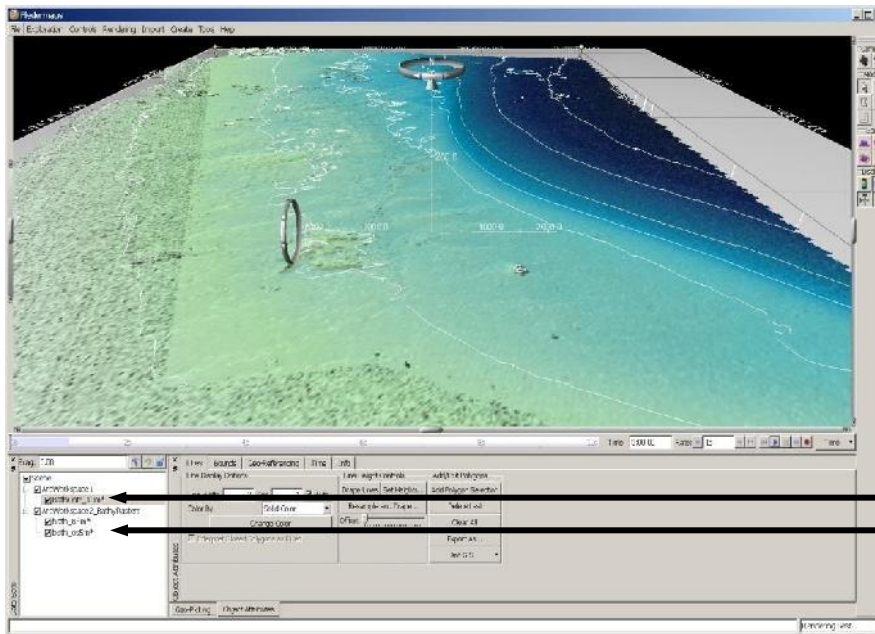


Workflow - watercolumn



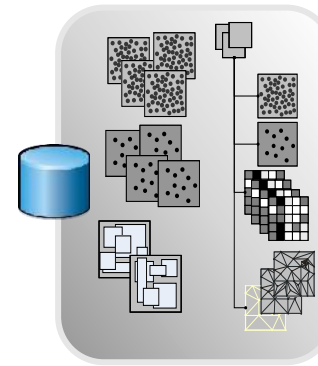
Fledermaus - ArcGIS workspace

Workspace data object



- Folder
- File (GDB)
- Personal (MDB)
- Spatial Database Engine (SDE)

Geodatabase

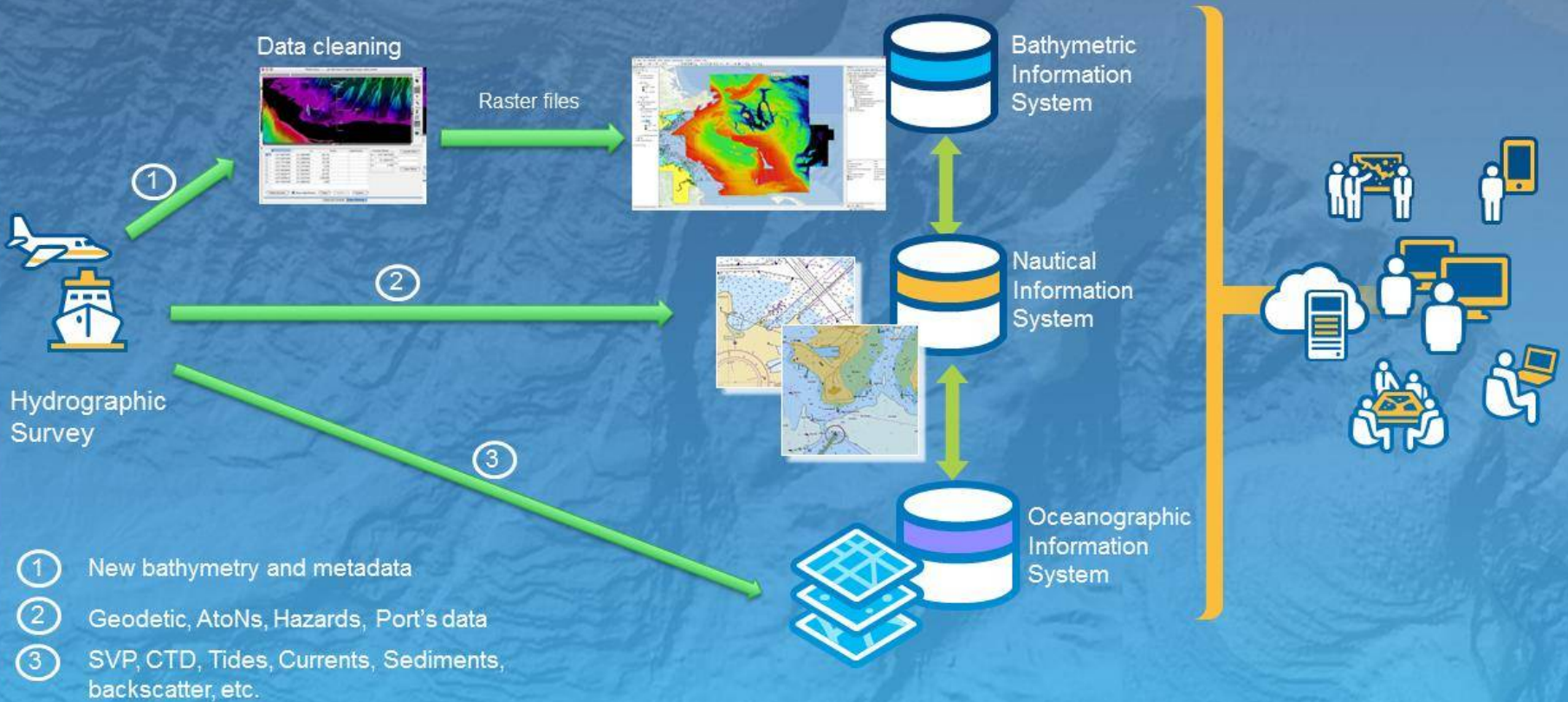


- ### Data Model
- *BIS*
 - *SSDM*
 - *PODS*
 - *ArcMarine*
 - *Nautical*

- Rasters (e.g., bathymetry, mosaics)
- Vectors (coastlines, sediments samples, etc.)

ArcGIS for maritime

A Maritime Data Management System



Collect data once, use it many times

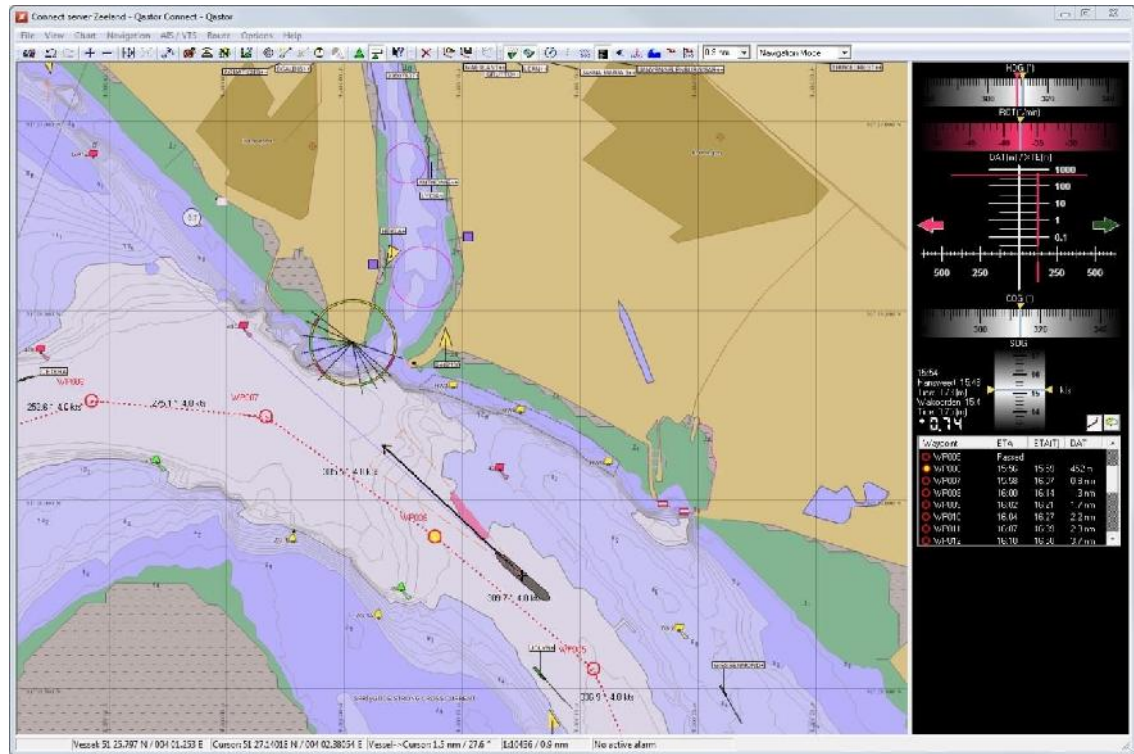


Piloting and Navigation solutions

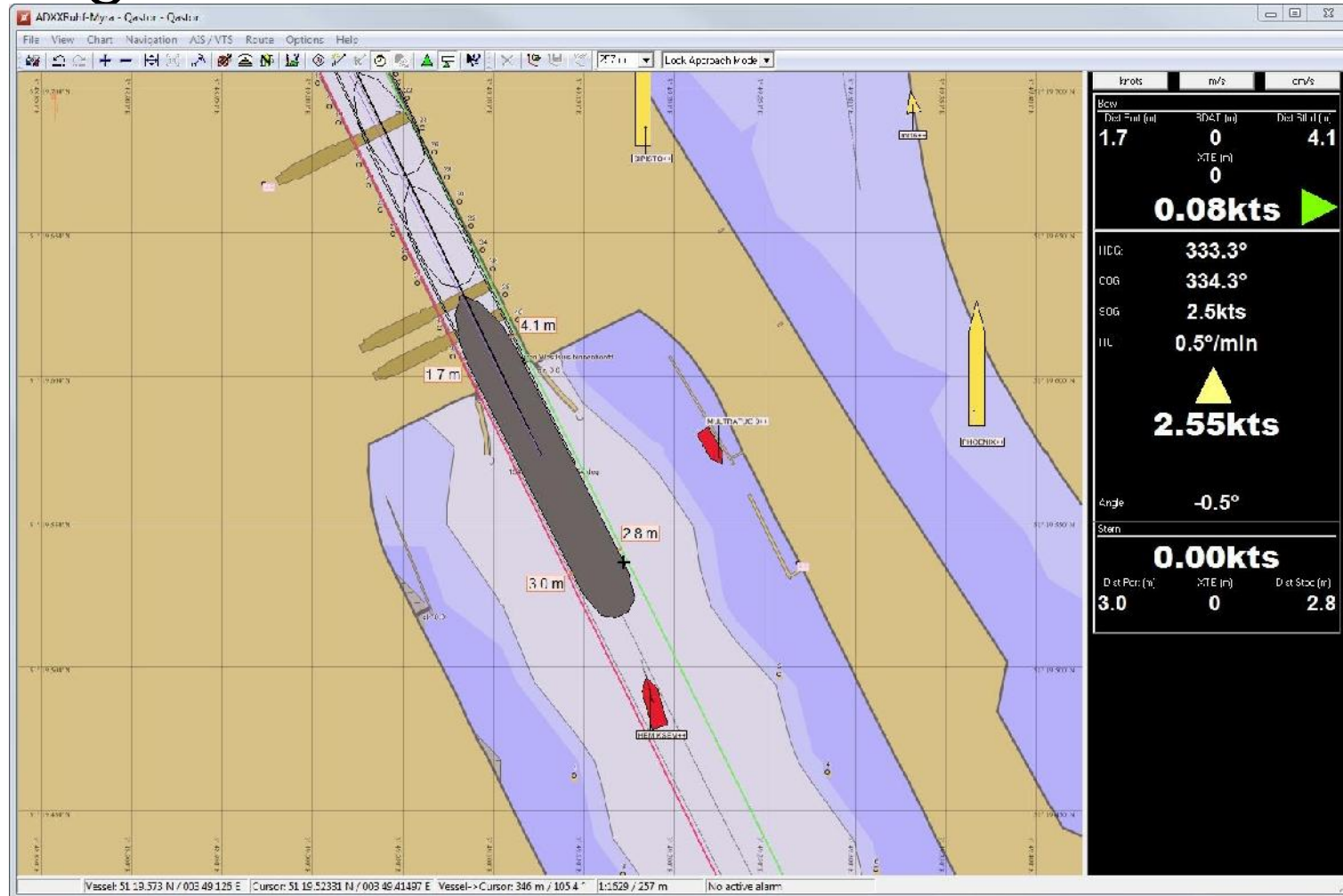


Qastor

adNavigation: Portable Pilot Units



adNavigation: Portable Pilot Units



Highly Detailed Electronic Chart

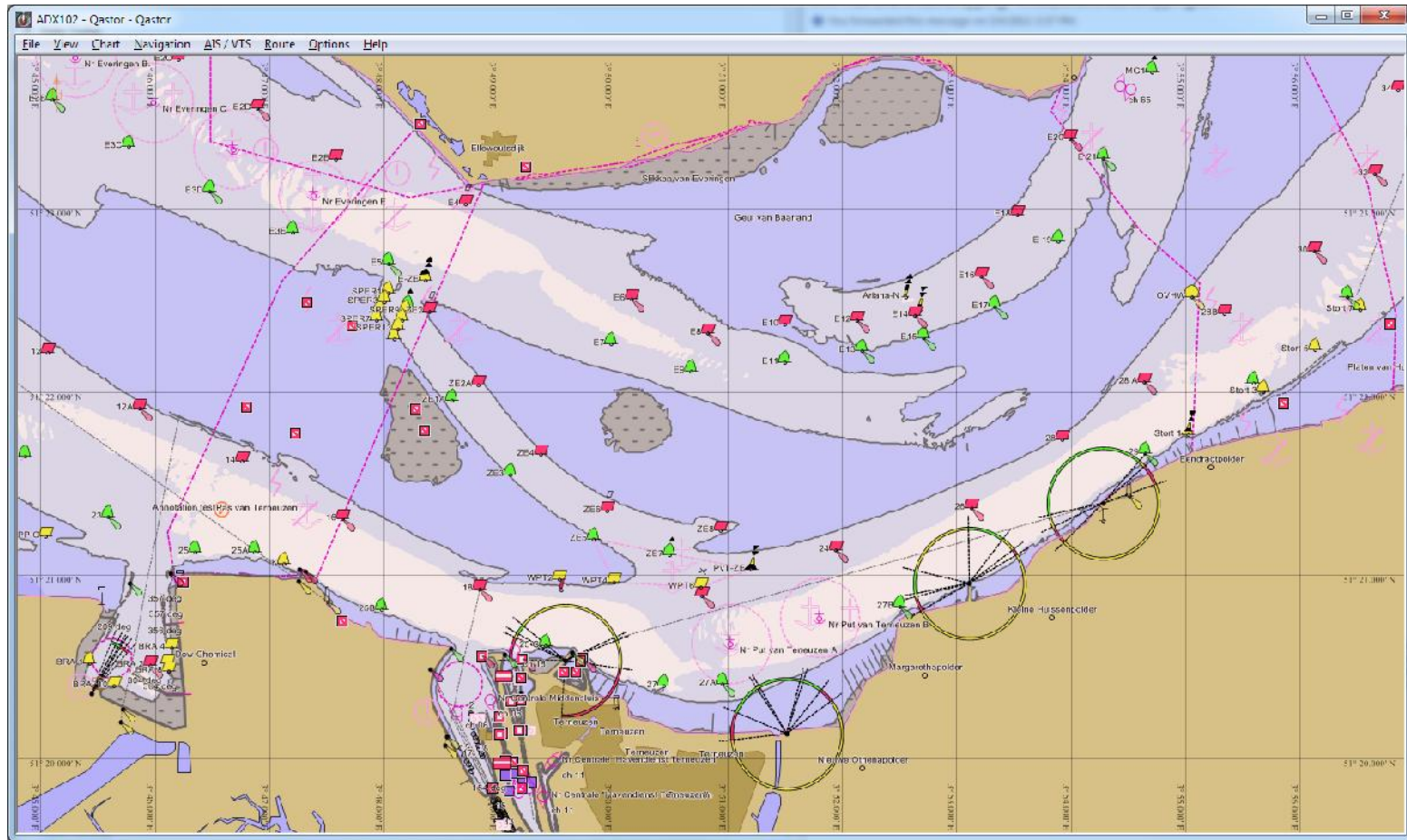
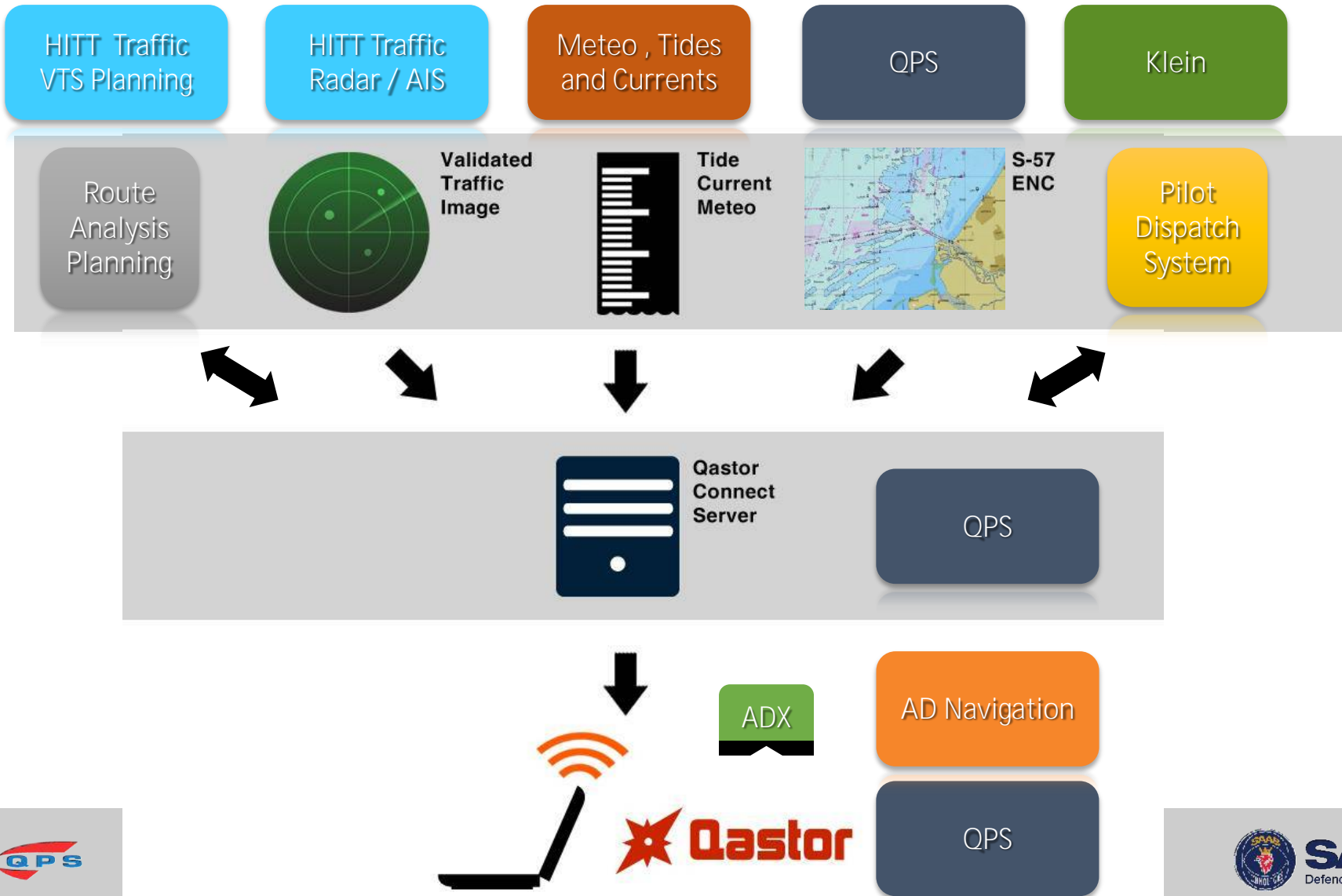
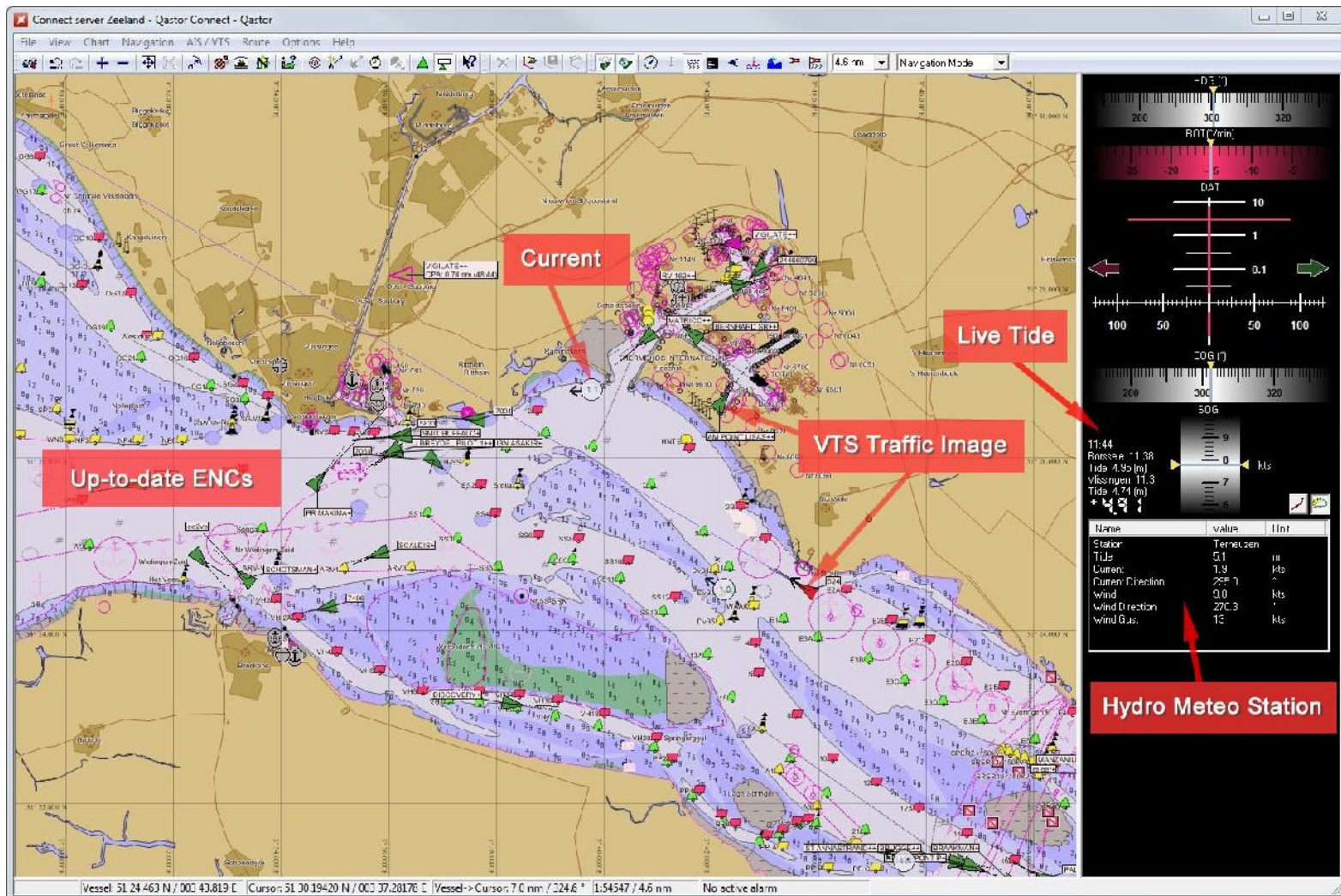


Chart adapts to realtime tide

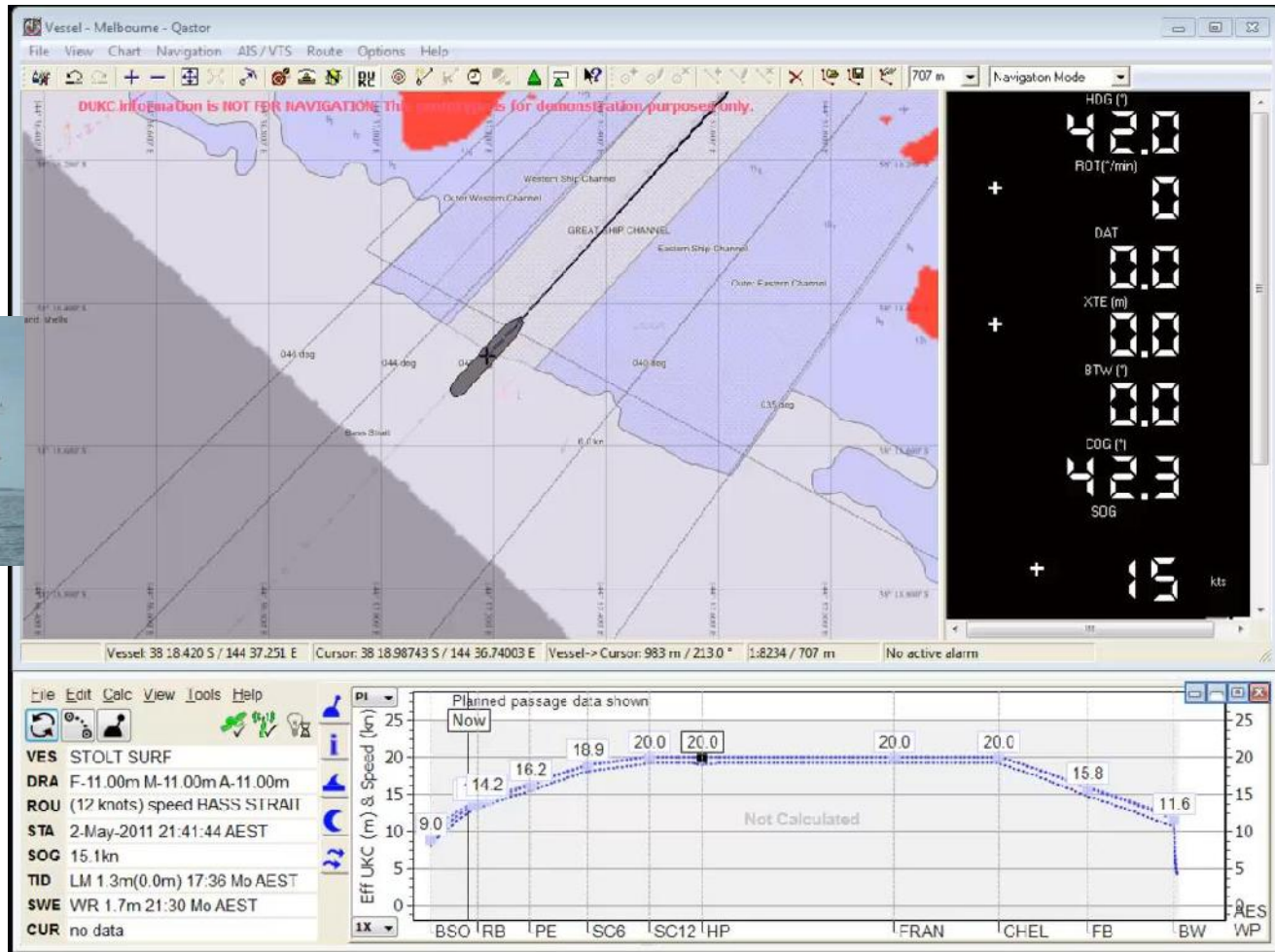
Integrated port data system



Qastor / Connect demo:



Realtime Underkeel Clearance





THANK YOU

Questions?

