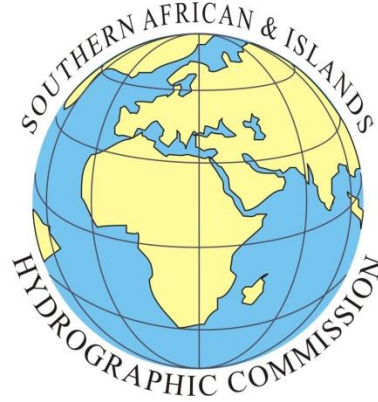




Cape Town - 30 August 2016



France
National Report to
SOUTHERN AFRICAN
AND ISLANDS
HYDROGRAPHIC
COMMISSION
(SAIHC)

Surveys in SAIHC region 2017

Mayotte

- Western part of the lagoon

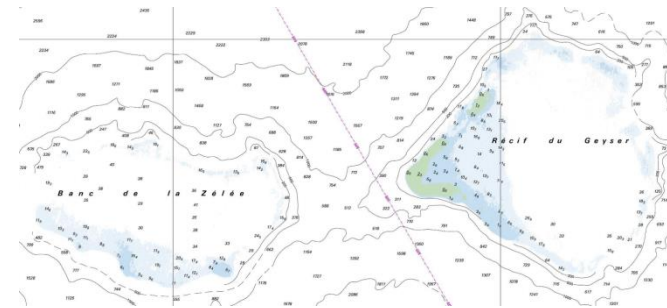
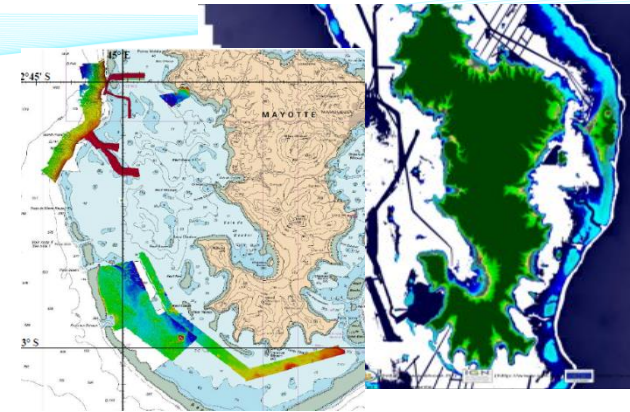
Banc de la Zélée & Récif du Geyser

La Réunion

- South-East coast

Madagascar

- Port-Dauphin (Tôlagnaro) & approaches
- Tuléar (Toliara)
- Banc de l'Etoile



Tide gauges



RONIM (Réseau d'observation du niveau de la mer)

- Improving charts datum
- Part of the observation component of the IOTWS
- Observation component of the inundation warning system

Real Time tide gauges

- Mayotte
- La Réunion (2)
- Toamasina (Madagascar)

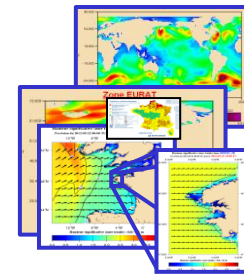


Inundation Modelling



Operational system for French European coasts

- **System *Vigilance Vague Submersion***
- **Operated by Météo France**
- **Tide gauges operated by SHOM**
- **Numerical modelling developed by SHOM and run by Météo France**



Homonim – step 2

- **Extension to oversea *départements***
- **Bathymetry matters !**

