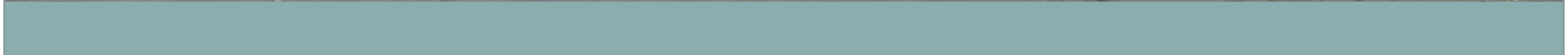
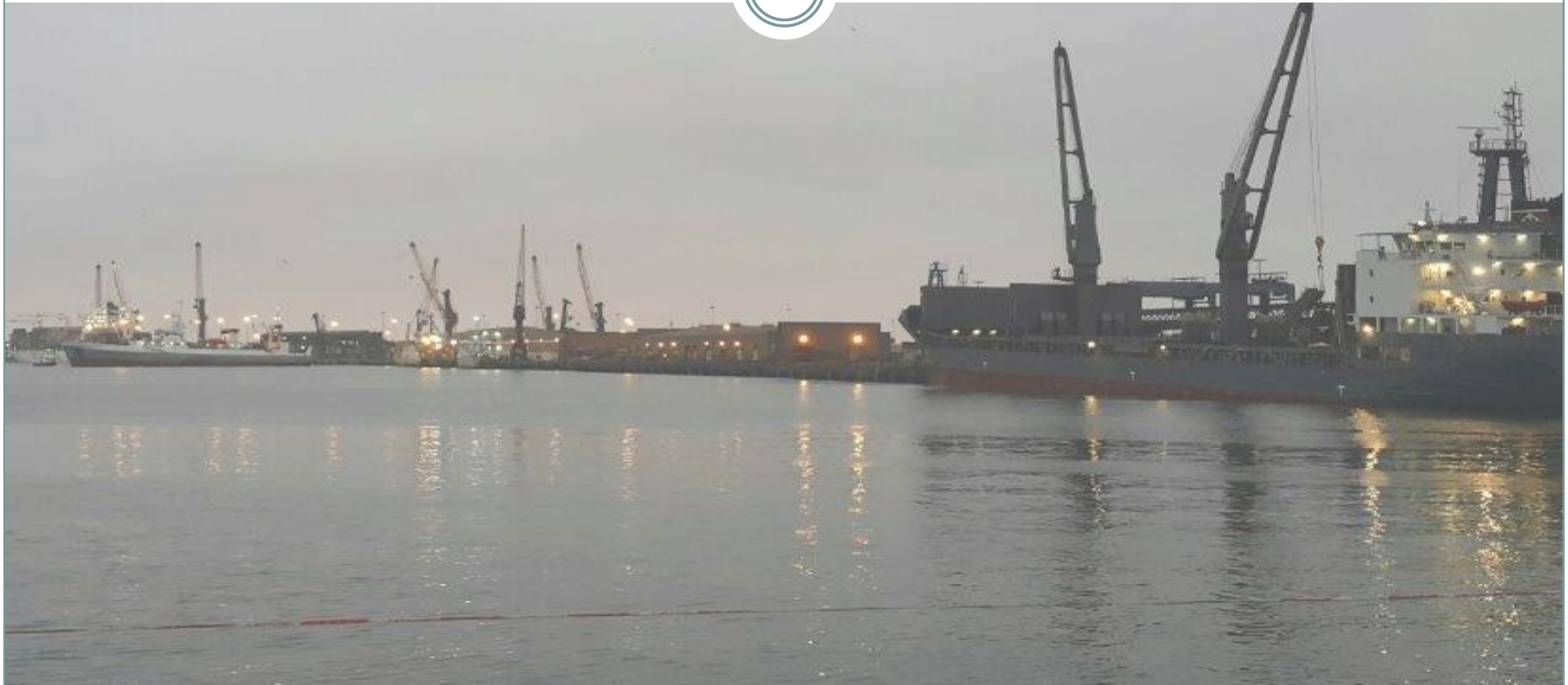
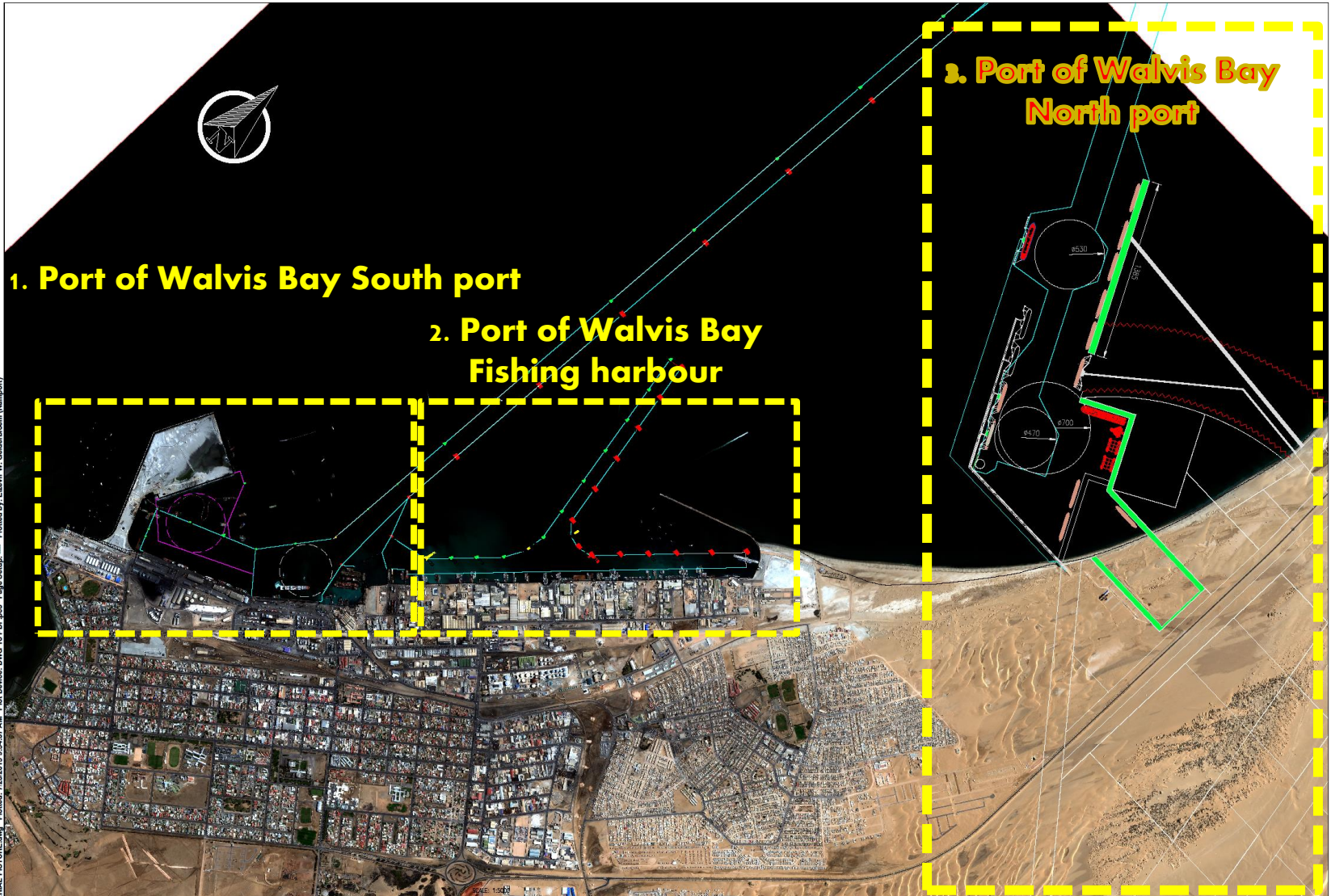


NAMIBIAN PORTS AUTHORITY





Port of Walvis Bay has 3 sections



Filename: POWB_AERIAL_PICTURE.dwg Plotted: 7/23/2015 9:54:57 AM Plot Device: DWG To PDF.pc3 Page Setup: --- Plotted by: Elzvir W. Gelderboom (Namport)

	NAMIBIAN PORTS AUTHORITY
	PORT ENGINEER'S DESIGN OFFICE
	P. O. BOX 361
	KD. 17, RIKUMBI KANDANGA RD.
	WALVIS BAY, NAMIBIA
TEL.: +264 (64) 208 2376	
MOBILE: +264 (0) 81 2755 214	

PROJECT NAME:	PORT OF WALVIS BAY
SATELLITE IMAGE - 3 JUNE 2015	

DRAWING NAME:	NAVIGATIONAL LAYOUT AND LAND AREA DRAFT PORT MASTER PLAN
DRAWN:	ELZVIR GELDERBOEM
DESIGNED:	ELZVIR GELDERBOEM
CHECKED:	
APPROVED:	BSEY USAB

NO.	REVISIONS	DATE	BY

PORT ENGINEER	
DATE	SCALE
JULY 2015	1:100
REGISTRATION NO.	



SECTION 1: THE EXISTING PORT OF WALVIS BAY South port





PORT OF WALVIS BAY – SECTION 1



Port of Walvis Bay: existing commercial port facilities:

1. 150 hectares of land area;
2. 8 commercial berths;
3. 1 x link span ro-ro berth;
4. 1 x small craft harbour;
5. 1 x 45,000dwt Tanker berth @ -10.4m CD water depth;
6. 1 x 2000ton Syncrolift dry docking facility;
7. 3 x floating dry docks, max 15000ton capacity;
8. 1700m of total berth space;
9. Berths 1 to 3 (container berths) = -14.0m CD water depth;
10. Berths 4 to 8 (multipurpose berths) = -10.6m CD water depth;



PORT OF WALVIS BAY – SECTION 1

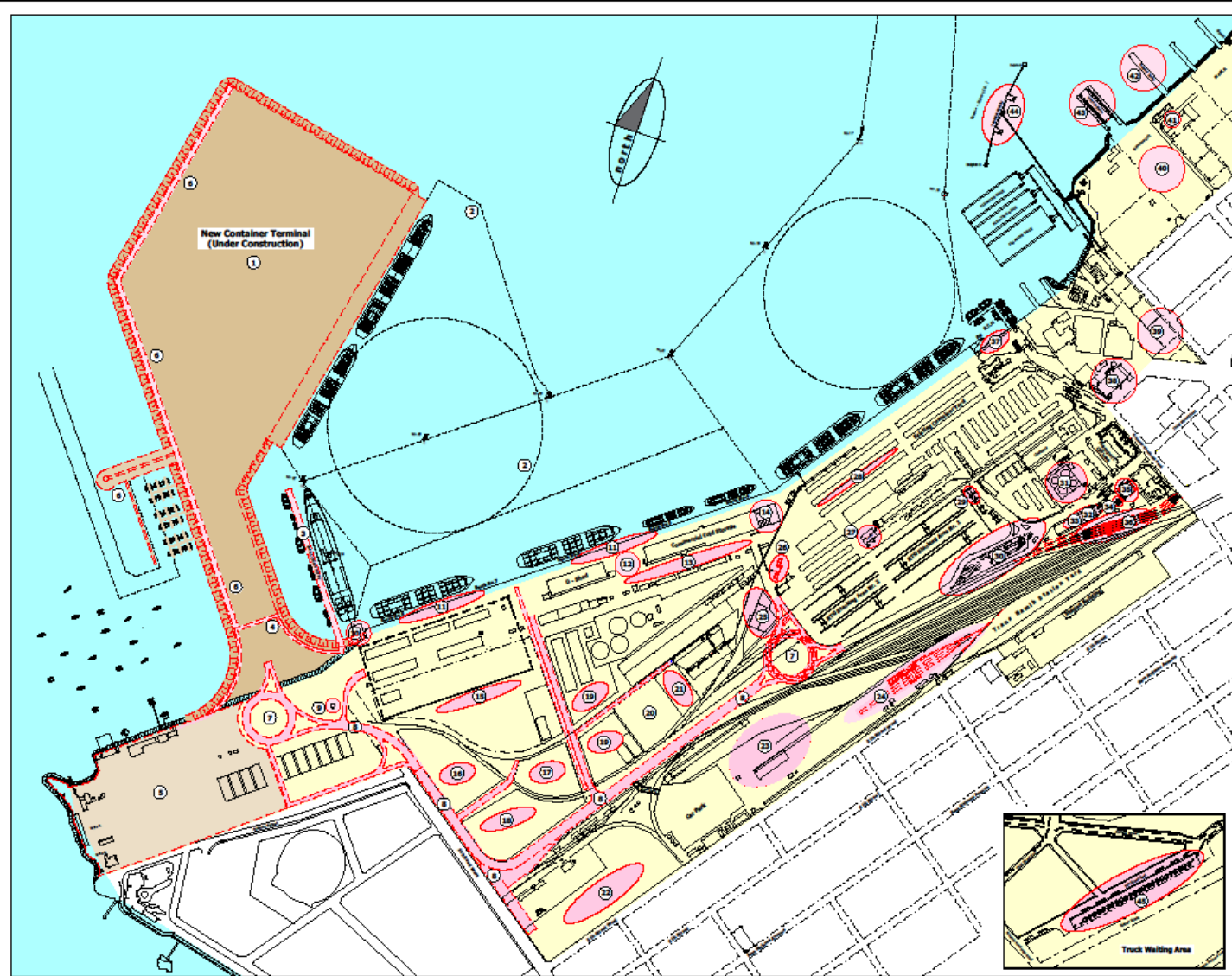


Port of Walvis Bay: Major facilities currently under construction (2014 to 2017):

1. 1 x 600m long 8000 TEU container berths @ -16.0m CD water depth;
2. 40 hectares of land reclamation for a new container terminal;
3. 1 x 300m LOA passenger liner berth @ -11m CD water depth;
4. 120m small craft jetty



Port of Walvis Bay – Existing and future layout



Notes

No.	Project Description	Completion Date
1	Container Terminal on reclaimed land - Under Construction	2017
2	New Container Terminal Berth Dredging	2017
3	Crane Lifter and Small Craft Jetty	2017
4	Viewport to Wall - Crane Lifter Berth to Waterfront	2017
5	Waterfront Development	2017
6	Marina Development	2017
7	Port Roads, Additional public service area	2017
8	Harbour Main Roads & Service Roads	2017
9	Electrical Sub-Station	2018
10	Link Open Berth	2018
11	Berths 4 to 8 Quay wall Soffit Repairs	2018
12	Road Rehabilitation	2018
13	Road Overlay & Rehabilitation and Upgrade	2018
14	Commercial Cold Store Extension	2018
15	Walvis Bay Bulk Terminal Fencing	2018
16	Zimbabwe Dry Port	2018
17	Zambia Dry Port - Phase 1	2018
18	Zambia Dry Port - Phase 2	2018
19	Protea Chemicals Extension	2018
20	Maritime Port Properties - Exterior handling facility	2018
21	Swabing Uranium - Multipurpose facility	2018
22	Botswana Dry Port	2018
23	Car Import Terminal	2018
24	New Carriage & Wagon Depot	2018
25	Port Engineer's Storage Yard	2018
26	New Terminal Entrance Gate	2018
27	Newport Vehicle Storage Shed	2018
28	High Mast Lights Relocation	2018
29	Workshop for RTV's	2018
30	Ministry of Finance Customs X-Ray Scanners	2018
31	Rehabilitation of IFCO Tank Facility	2018
32	Port Police Station	2018
33	Newport Procurement Department Office	2018
34	New Clinic Building	2018
35	Port Security Building Concrete Extension	2018
36	Port - New Main Entrance Gate	2018
37	Small Craft Harbour Concrete Wall Rehabilitation	2018
38	Staff Recreational Centre	2018
39	Rehabilitation of Banking Facilities	2018
40	Syncofill Side Transfer Rehabilitation	2018
41	New Toilet Facilities for Syncofill Users	2018
42	Rehabilitation of Syncofill Repair Jetty	2018
43	Rehabilitation of Syncofill Lift Jetty	2018
44	Rehabilitation of Tanker Berth	2018
45	Newport Truck Staging Area	2018
46	Fibre Optic / CCTV Network extension	2018

DRAWING OFFICE

NOVOPORT
No. 10001
P.O. Box 10001
WALVIS BAY

Author: **Simon L.** Date: **17/03/2018**
 Checked: **A.M.C. Munn** Date: **17/03/2018**

Scale: **1:7500**

Project: **Port, Current & Future Projects**

PORT OF WALVIS BAY
Past, Current & Future Projects

Drawing No: **WBH-602-A-3110** of **1**



SECTION 3: PORT OF WALVIS BAY North Port

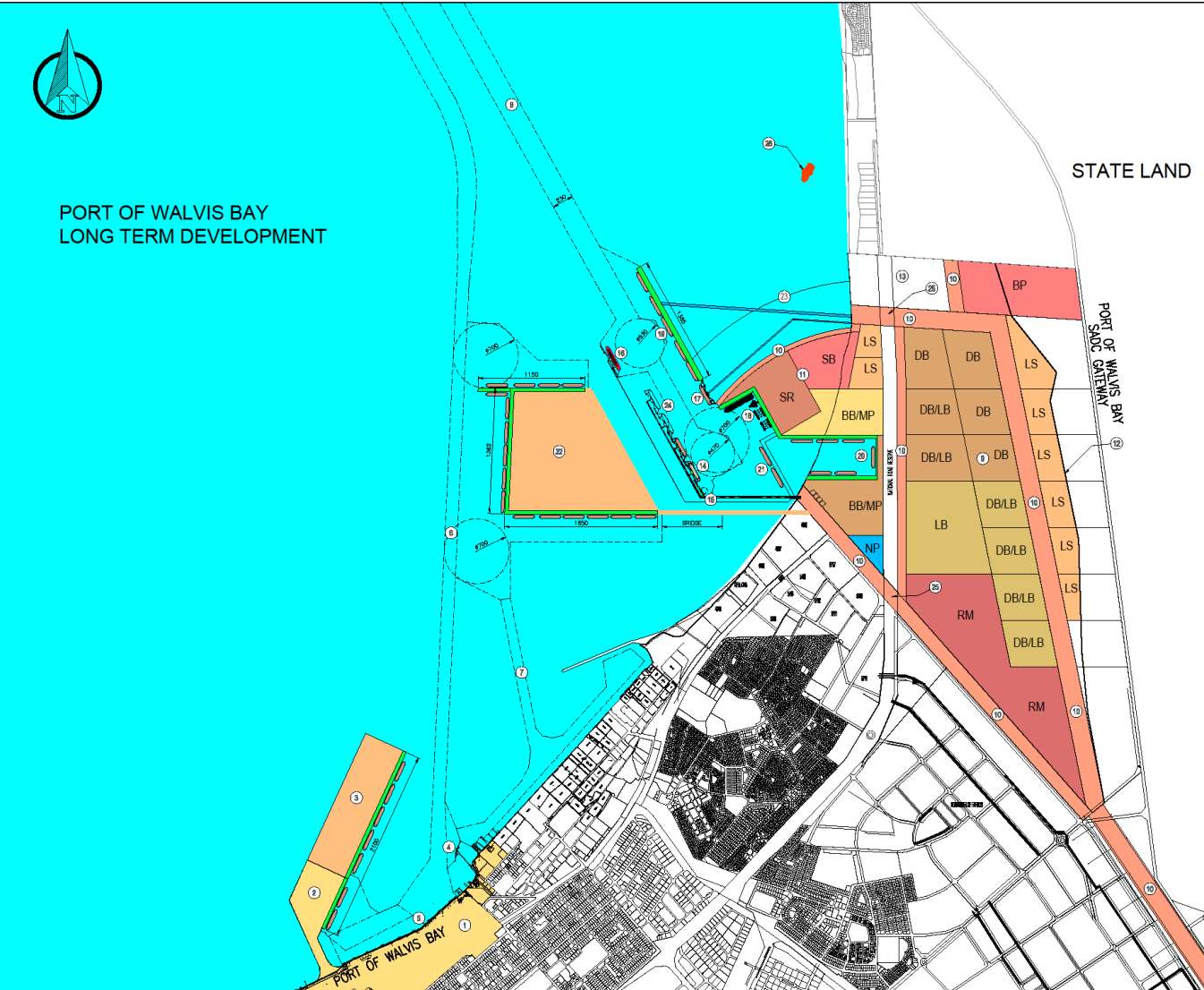




Port of Walvis Bay – Section 3 – SADC Gateway

WBH-602-W-414-20-R5

Filename: WBH-602-W-414-20-R5.dwg Plocked: 6/29/2015 11:57:59 AM Plot Device: DWG To PDF.pc3 Page Setup: --- Plocked by: Elzevir Gelderboom



LEGEND:

	PORT OF WALVIS BAY - LAND AREAS
	PORT OF WALVIS BAY - LAND AREAS SPECIFIC FOR SERVICES AND UTILITIES CORRIDORS
	PORT OF WALVIS BAY - WATER AREA - LEGAL JURISDICTION
	SEALED DREDGED TOE LINES
	NEW QUAY WALL

LAND USE ZONING

BP	BUFFER BOND
BB	BREAK BULK
DB	DRY BULK
MP	MULTI-PURPOSE
LB	LIQUID BULK (TANK FARMS)
LS	LOGISTICAL SUPPORT / WAREHOUSING
SR	SHIP REPAIR
SB	SUPPLY BASE
NP	NAMPORT ADMIN.
RM	RAILWAY MARSHALLING YARD AND RAIL TERMINALS

KEY NOTES:

KEY NOTES:	COMPLETION
1 EXISTING PORT OF WALVIS BAY LAND AREA	
2 NEW CONTAINER TERMINAL ON RECLAIMED LAND	2017
3 FUTURE EXTENSION OF THE NEW CONTAINER TERMINAL	2025 AND BEYOND
4 EXISTING TANKER BERTH IN THE PORT OF WALVIS BAY	
5 BERTHS 1 TO 8 - EXISTING PORT OF WALVIS BAY	
6 ENTRANCE CHANNEL AT 14.0m CD - EXISTING PORT OF WALVIS BAY	
7 ENTRANCE CHANNEL AT 6.5m CD - EXISTING PORT OF WALVIS BAY FISHING HARBOUR	
8 ENTRANCE CHANNEL AT 18.5m CD - NEW PORT OF WALVIS BAY SADC GATEWAY	2017
9 PORT OF WALVIS BAY SADC GATEWAY LAND AREA + 1330 Ha EXCLUDING LAND TO BE RECLAIMED	2017
10 SERVICES AND UTILITIES CORRIDORS	2020
11 NEW LAND TO BE RECLAIMED	2017
12 WESTERN EDGE OF HIGH DUNE BELT	
13 PRIVATE LAND - MARICULTURE	
14 PHASE 1: OIL TERMINAL AT SADC GATEWAY	2017
15 PHASE 1: SMALL CRAFT HARBOUR AT SADC GATEWAY	2017
16 PHASE 2: LNG TERMINAL AT SADC GATEWAY	2016
17 PHASE 3: BULK TERMINAL AT SADC GATEWAY	2019
18 PHASE 4: SHIP AND RIG REPAIR YARD AT SADC GATEWAY	2018
19 PHASE 5: BOTSWANA COAL TERMINAL AT SADC GATEWAY	2025
20 FUTURE DIG OUT BASIN AT SADC GATEWAY	2025 OR BEYOND
21 ALTERNATIVE TO DIG OUT BASIN	
22 LONG TERM FUTURE PORT DEVELOPMENT AREA	FUTURE
23 LONG TERM LAND RECLAMATION BOUNDARY	FUTURE
24 FUTURE LIQUID BULK TERMINALS	FUTURE
25 GRADE SEPARATED ROAD CROSSING	
26 GUANO PLATFORM	

NAMBIAN PORTS AUTHORITY
 PORT ENGINEERS DESIGN OFFICE
 P. O. BOX 361
 NO. 17, RIKUMBI KANDANGA RD.
 WALVIS BAY, NAMIBIA
 TEL.: +264 (64) 208 2376
 MOBILE: +264 (0) 81 2755 214

PROJECT NAME:
 MASTER PLAN - LAYOUT

PORT OF WALVIS BAY SADC GATEWAY

DRAWING NAME:
 DRAFT MASTER PLAN LAYOUT

DESIGNED	ELZEVR GELDERBOEM	DATE	29 MAY 14	BY	E.G.
CHECKED	ELZEVR GELDERBOEM	DATE	2 MAY 15	BY	E.G.
APPROVED	ALLE MEVIS	DATE	27 MAY 15	BY	E.G.
NO.		DATE	2 MAY 15	BY	E.G.

1. ADDED FUTURE LAND RECLAMATION
 2. AMENDED ROUTE OF LNG PIPELINE
 3. ADDED LAND USE ZONING
 4. MADE SMALL COSMETIC CHANGES - COLOURS
 ISSUED FOR DISCUSSION PURPOSES ONLY

FOR DISCUSSION PURPOSES ONLY

PORT ENGINEER	
DATE	SCALE
MARCH 2015	1:20000
REGISTRATION NO.	
WBH-602-W-414-20-R5	



Port of Walvis Bay: SADC GATEWAY future:

1. 1330 hectares of land;
2. Bulk cargo handling port;
3. More than 20 different phases planned;
4. Will cater for port growth for the next 50 or more years;
5. Focused at SADC and not just Namibia;



Port of Walvis Bay – Section 3 - SADC Gateway



1. Phase 1: Liquid Bulk Terminal for hydrocarbons

- Entrance channel and turning basin to new port;
- 2 x 60,000dwt tanker berths;
- Access trestle;
- Product pipelines;
- Etc.

Phase 1 is being implemented by the Ministry of Mines and Energy, and has commenced on 30 March 2015, for commissioning by 2017.

2. Phase 2: LNG Terminal for new power plant

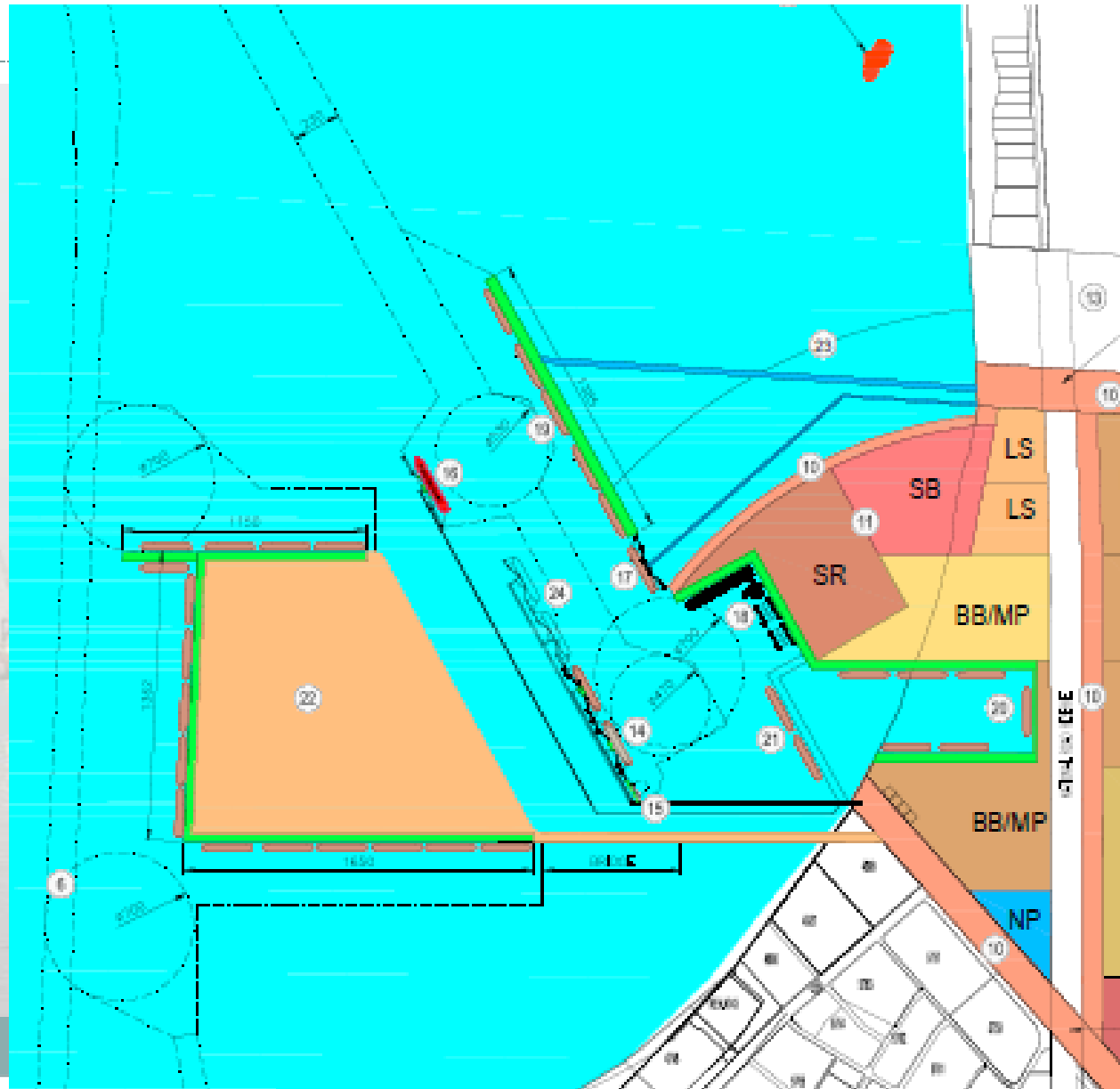
- Currently on hold

3. Phase 3: Multipurpose bulk terminal (<10 million Tons p/a)

- Feasibility study will commence in 2016;
- Implementation could start 2017;
- Commissioning expected by 2019/20



Port of Walvis Bay – Section 3 - SADC Gateway





Port of Walvis Bay – Section 3 - SADC Gateway



LAND FILLING next to the B2 Road

1. Namport requested the Contractor building the oil Terminal to use some of the dredged material to do land filling and flatten the dunes on the SADC Gateway port land;
2. The land filling will result in a flat surface on which we can then start developing for port operations;

Port of Walvis Bay SADC Gateway – Phase 1 OIL TERMINAL

PORT OF WALVIS BAY SADC GATEWAY - PHASE 1 - OIL TERMINAL PROJECT
PROGRESS AT AT 24 AUGUST 2015





PROJECT FOCUS

- **PORT OF WALVIS BAY NEW CONTAINER TERMINAL ON RECLAIMED LAND**



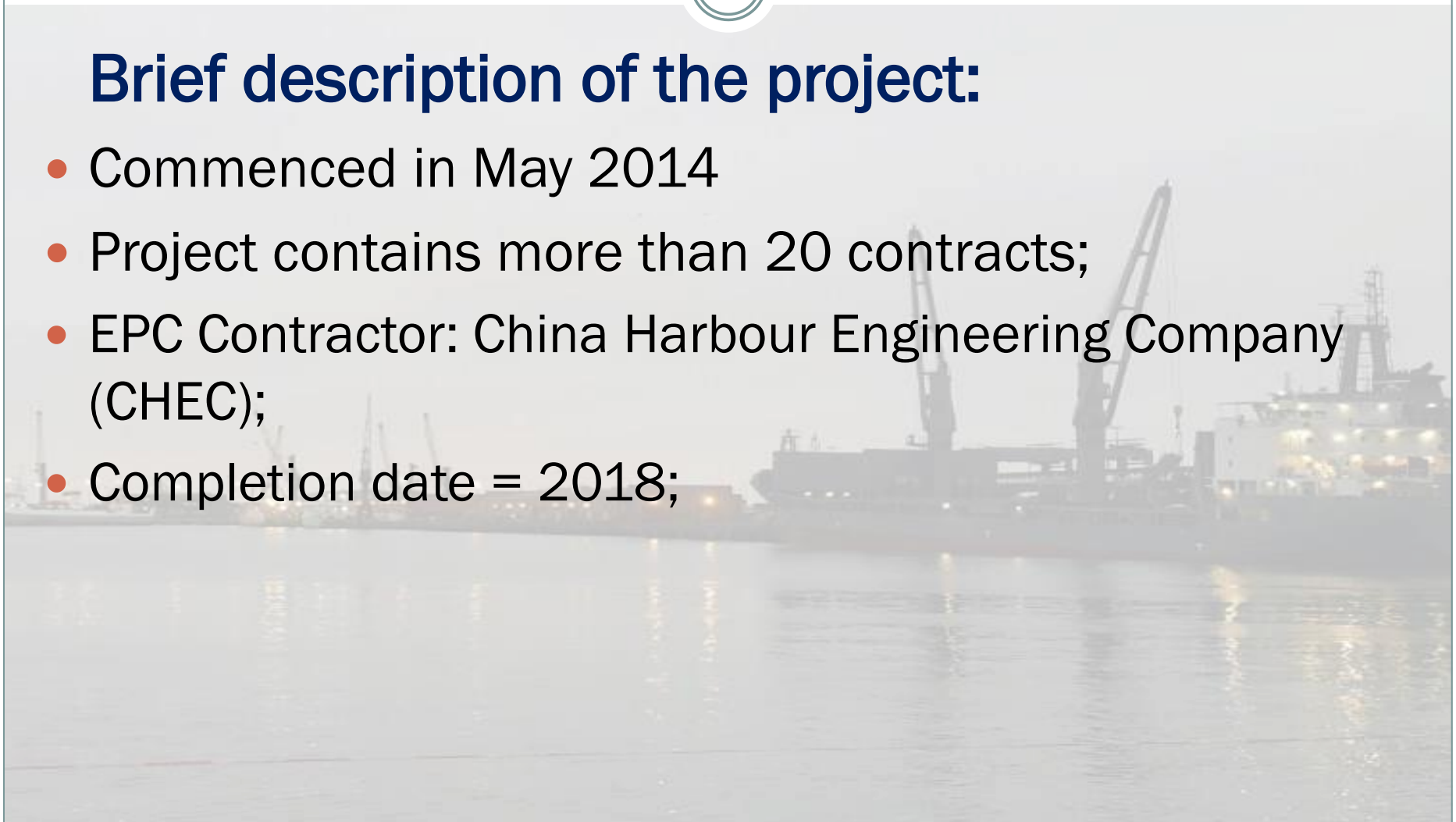


1. New Container Terminal on Reclaimed Land



Brief description of the project:

- Commenced in May 2014
- Project contains more than 20 contracts;
- EPC Contractor: China Harbour Engineering Company (CHEC);
- Completion date = 2018;





PORT OF WALVIS BAY NEW CONTAINER
TERMINAL ON RECLAIMED LAND
PROJECT PICTURE ALBUM

STATUS AS AT SEPTEMBER 2014



PORT OF WALVIS BAY NEW CONTAINER
TERMINAL ON RECLAIMED LAND
PROJECT PICTURE ALBUM

STATUS AS AT DECEMBER 2014



PORT OF WALVIS BAY NEW CONTAINER
TERMINAL ON RECLAIMED LAND
PROJECT PICTURE ALBUM

STATUS AS AT FEBRUARY 2015



PORT OF WALVIS BAY NEW CONTAINER
TERMINAL ON RECLAIMED LAND
PROJECT PICTURE ALBUM

STATUS AS AT APRIL 2015



PORT OF WALVIS BAY NEW CONTAINER
TERMINAL ON RECLAIMED LAND
PROJECT PICTURE ALBUM

STATUS AS AT MAY 2015

PORT OF WALVIS BAY NEW CONTAINER TERMINAL ON RECLAIMED LAND PROJECT
CT PROGRESS AS AT 24 AUGUST 2015



PORT OF WALVIS BAY NEW CONTAINER
TERMINAL ON RECLAIMED LAND
PROJECT PICTURE ALBUM

STATUS AS AT AUG 2015

OF WALVIS BAY NEW CONTAINER TERMINAL ON RECLAIMED LAND PROJECT
CT STATUS AS AT 9 MARCH 2016



PORT OF WALVIS BAY NEW CONTAINER
TERMINAL ON RECLAIMED LAND
PROJECT PICTURE ALBUM

STATUS AS AT MARCH 2016



New Walvis Bay Container Terminal





New Container Terminal on Reclaimed Land



OVERALL PROJECT PROGRESS TO DATE:

50%

On schedule to commission by 2018



CAPITAL PROJECTS UPDATE



Port of Walvis Bay Waterfront and Marina Development:

1. Ground breaking by 2018;





Waterfront Development
NAMPORT
Friday, February 13, 2016

Progress Presentation Render 2

**MACKINTOSH
LAUTENBACH
ARCHITECTS** 
info@mackintoshlautenbach.com
No. 5 Montage Gardens | 5 Laurier St. West | P.O. Box 600 | Oakville, ON
T 416 541 4083 | F 416 541 4031



Waterfront Development
NAMPORT
Friday, February 13, 2016

Progress Presentation Render 1

**MACKINTOSH
LAUTENBACH
ARCHITECTS** 
info@mackintoshlautenbach.com
No. 5 Montage Gardens | 5 Laurier in Street | P.O. Box 608 | St. John's, NL
T 424 04 40830 | F 424 04 40331



THANK YOU

