



# UNDERWATER SURVEYS



# **BRIEF INTRODUCTION TO UNDERWATER SURVEYS (PTY) LTD**

**Ephan Potgieter – Managing Director  
Underwater Surveys**



# SAIHC Involvement

- Attended the Maputo Conference in 1995
- Since then attended all SAIHC meetings except the one held in Portugal – other commitments prevented me from attending that one
- Have had a close relationship with the South African Hydrographic Office ever since the start of my career in 1980 – even had an office there for a period of time



# HISTORY – THE EARLY YEARS

- Number of ex-Racal employees
- With Thales takeover approached by Reson Group to open up an office in South Africa to look after their interests in Sub Saharan Africa
- Started operating in April 2001 as Reson SA (Pty) Limited
- Primarily formed to sell, hire and service the Reson product range and concentrating on multibeam echo sounders
- A subsidiary of the Danish company Reson AS



# OFFICE LOCATIONS

## **Cape Town Head Office:**

Unit 2 Southern Cross Village  
Capricorn Boulevard South  
Capricorn Park, 7945  
Cape Town, South Africa



## **Nelspruit Office:**

The Pride  
12B Porcupine Street  
Nelspruit, 1200  
South Africa



## **Walvis Bay Office:**

No 7 Seventh Road  
Walvis Bay  
Namibia







UWS Survey Vessel – Blue Dolphin



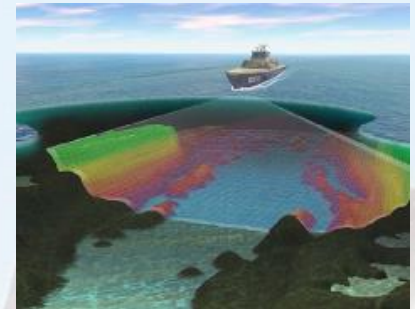
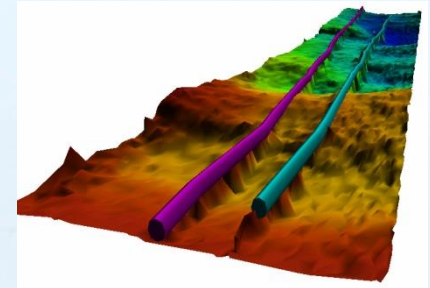
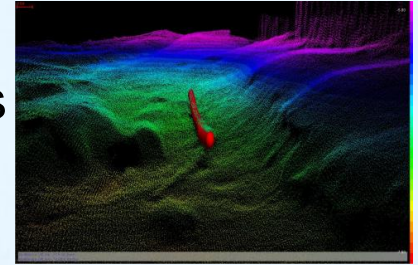
UWS Semi-Rigid - Falcon



# PORTFOLIO OF SERVICES

- **Offshore Surveys**

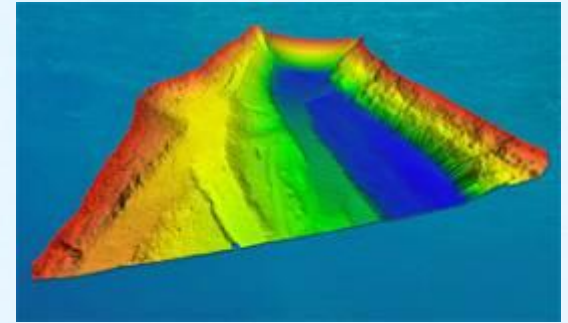
- Port Clearance & Harbour Breakwater Surveys
- Approach Channel Surveys
- Cable Route Surveys
- Pipeline Inspection/Route Surveys
- Pre- and Post Dredge Surveys
- Diamond Mining Surveys
- Regional Mapping Surveys
- Archaeological Surveys



# PORTFOLIO OF SERVICES

- **Freshwater Surveys**

- River Surveys
- Inland Dam Surveys
- Engineering Inspection of Dam Walls



- **Positioning Surveys**

- Surface and Underwater Positioning Solutions
- ROV Positioning Support
- Rig and Anchor Handling Positioning Support
- RTK GPS Positioning





# SPECIALISED INLAND HYDROGRAPHIC AND ENGINEERING SURVEYS

- Inland Hydrographic Surveys (Single / High Resolution Multibeam Echosounding)
- Sedimentation Surveys in Dams, Barrages and Rivers
- Capacity Surveys of Reservoirs/Dams (% Useable Water and % Dead Water)
- Determining Lowest Outlet of Reservoirs/Dams
- River Profiling for Hydrological Studies
- River Profiling for Flood Line Calculation
- River Profiling for Environmental Studies
- River Profiling for Engineering Design
- As-Built Structure Surveys on Land and in Water
- Engineering Inspections of Dam Walls
- Topographic Surveys
- Engineering Surveys
- Design Surveys



# RIVER SURVEYS





# RIVER SURVEYS

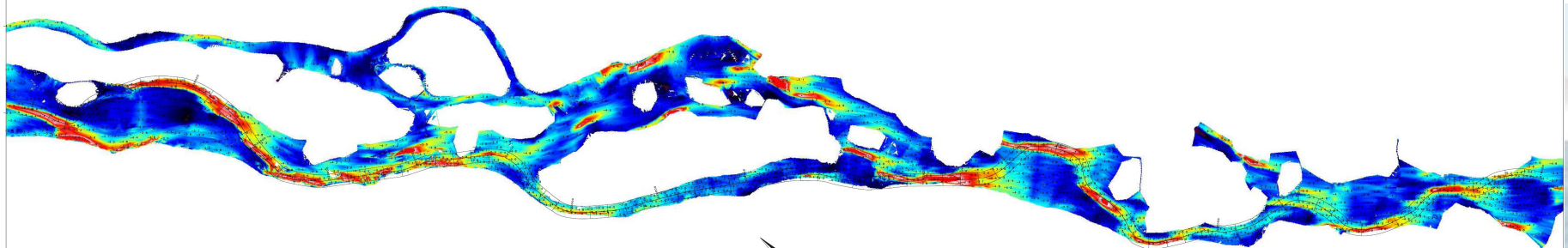
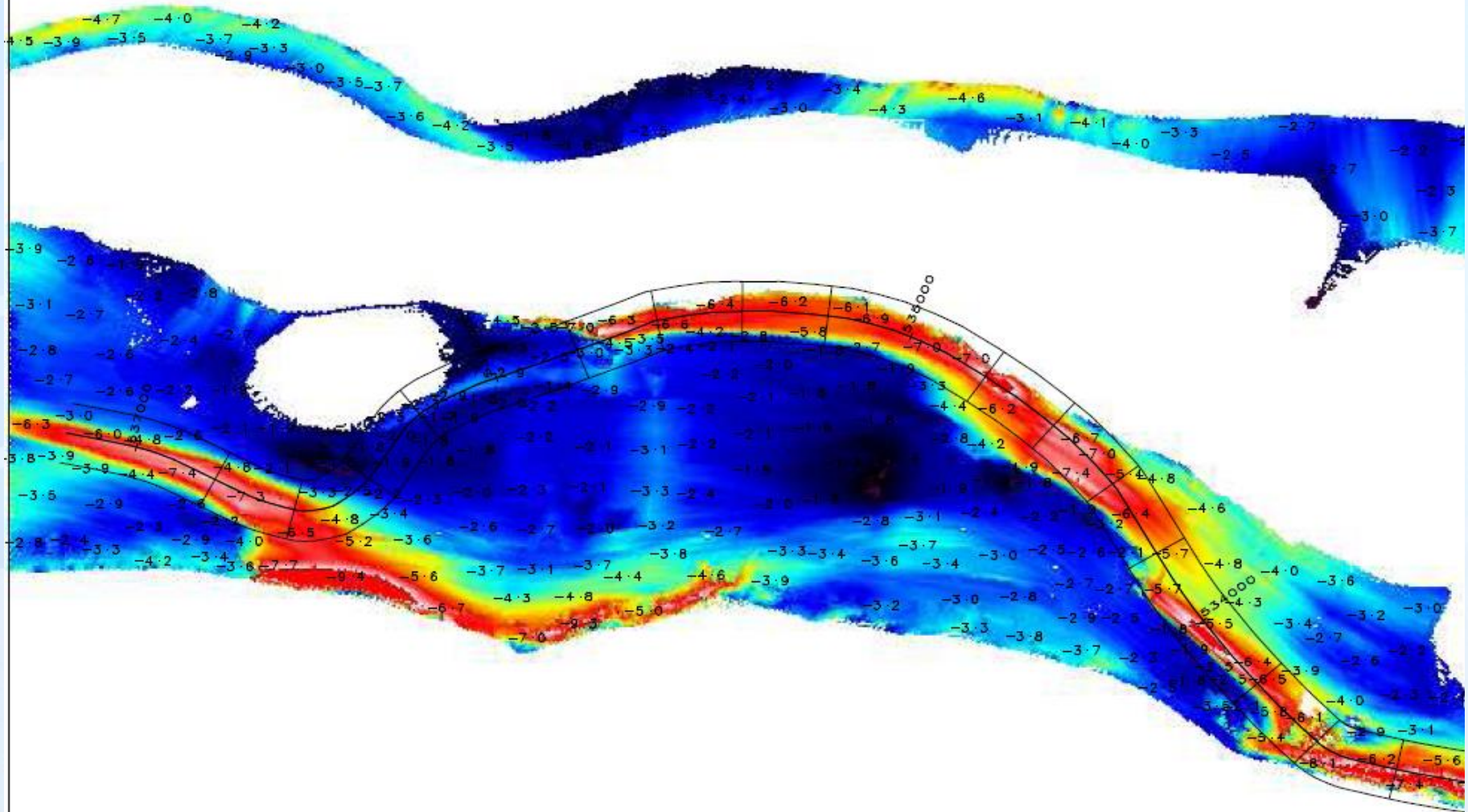




# RIVER SURVEYS

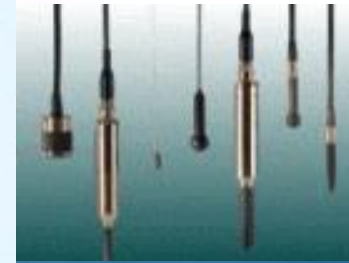






# AGENCIES

- Multibeam Echosounders
- Singlebeam Echosounders
- Side Scan Sonar & Sub-Bottom Profilers
- Motion & Attitude Sensors
- Imaging Sonars
- DGPS Solutions
- Fibre Optic Multiplexers
- Oceanographic Equipment
- Underwater Positioning
- Hydrographic Software Solutions
- Underwater Cables & Connections



**THANK YOU**

