



# GENERAL BATHYMETRIC CHART OF THE OCEANS (GEBCO)

14th Southern African and Islands Hydrographic Commission (SAIHC) Meeting  
September 2017

# GEBCO

General Bathymetric Chart of the Oceans



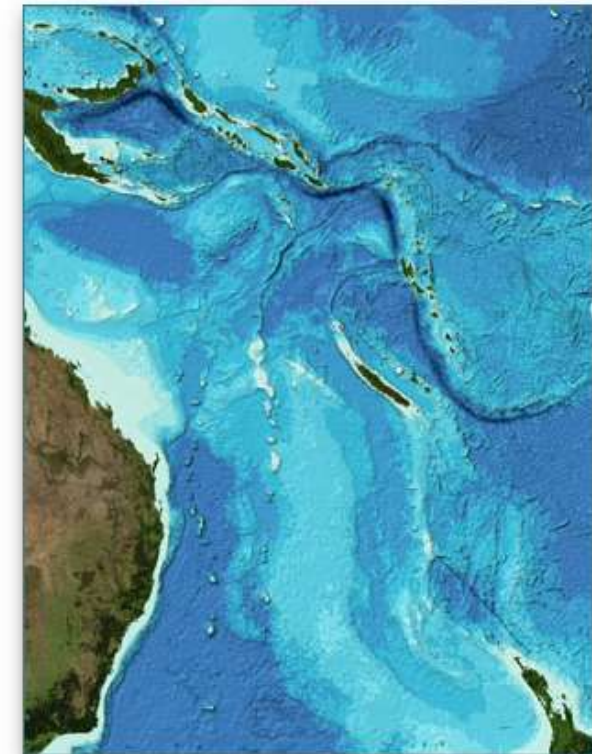
[Home](#) :: [Data and products](#)




## Data and products

Through the work of its committees and working groups, GEBCO produces and makes available a range of bathymetric data sets and products.

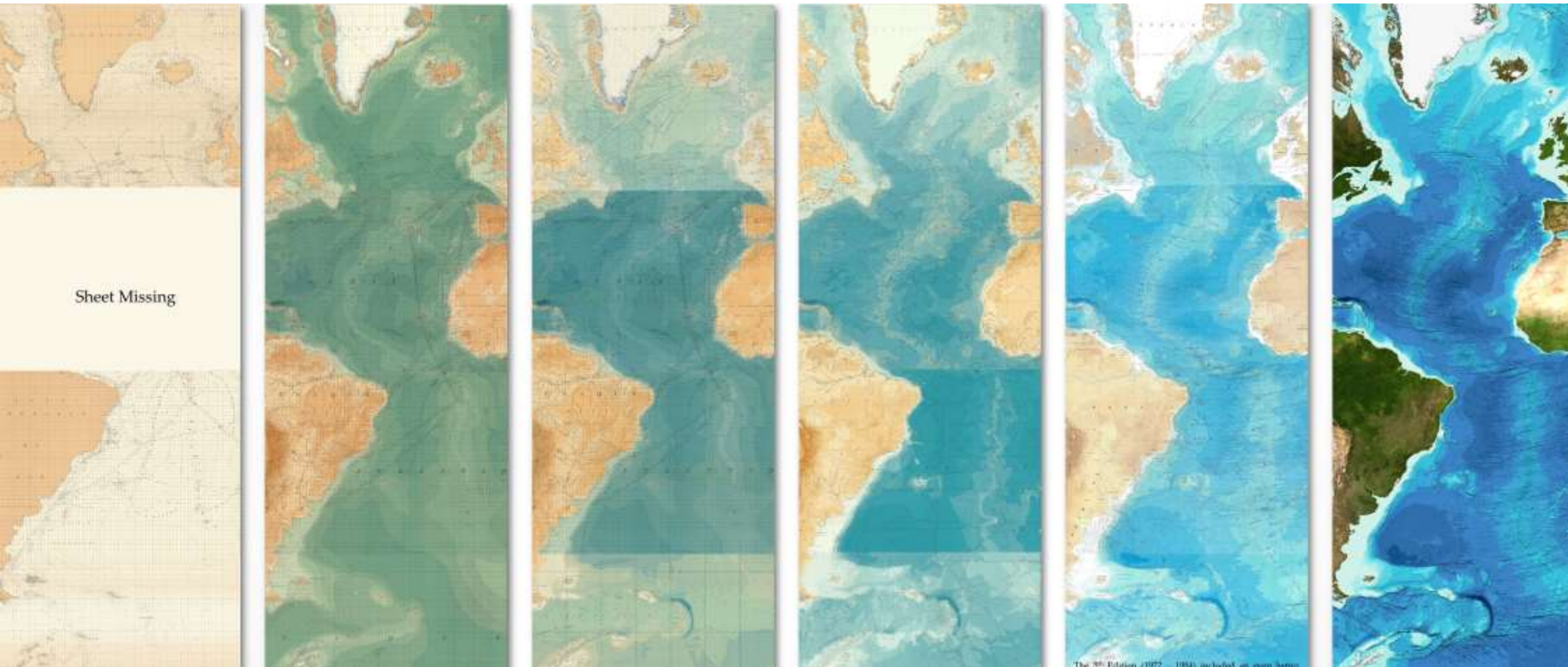
- [Gridded bathymetry data](#)
- [Grid display software](#)
- [GEBCO Digital Atlas](#)
- [Undersea feature names](#)
- [GEBCO web services](#)
- [Printable maps](#)
- [IHO-IOC GEBCO Cook Book](#)
- [Imagery](#)
- [Hard copy charts](#)
- [History of GEBCO](#)



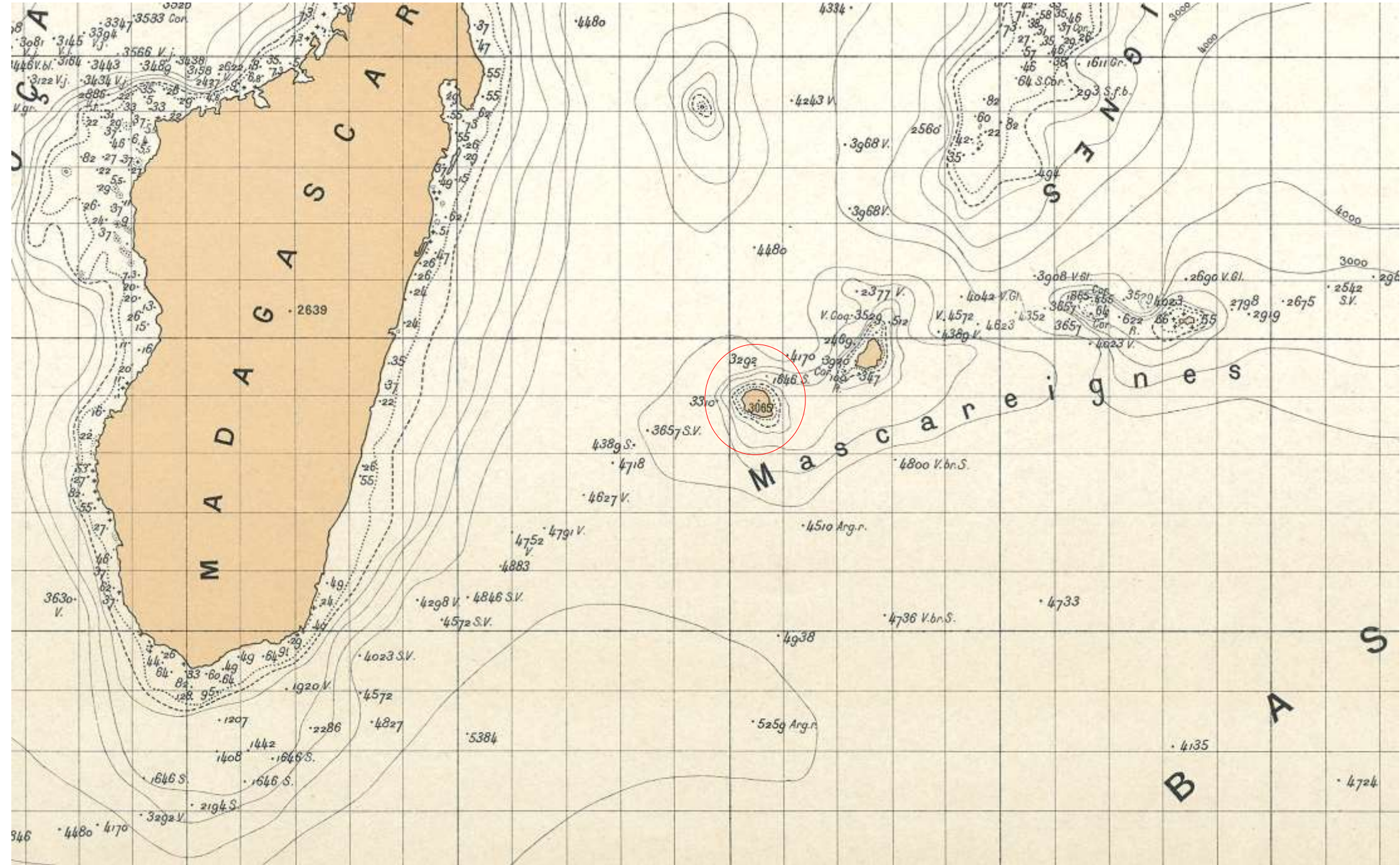
Access a publication about the GEBCO\_2014 Grid. 

Find out how to [contribute data](#) to help update GEBCO's data sets.

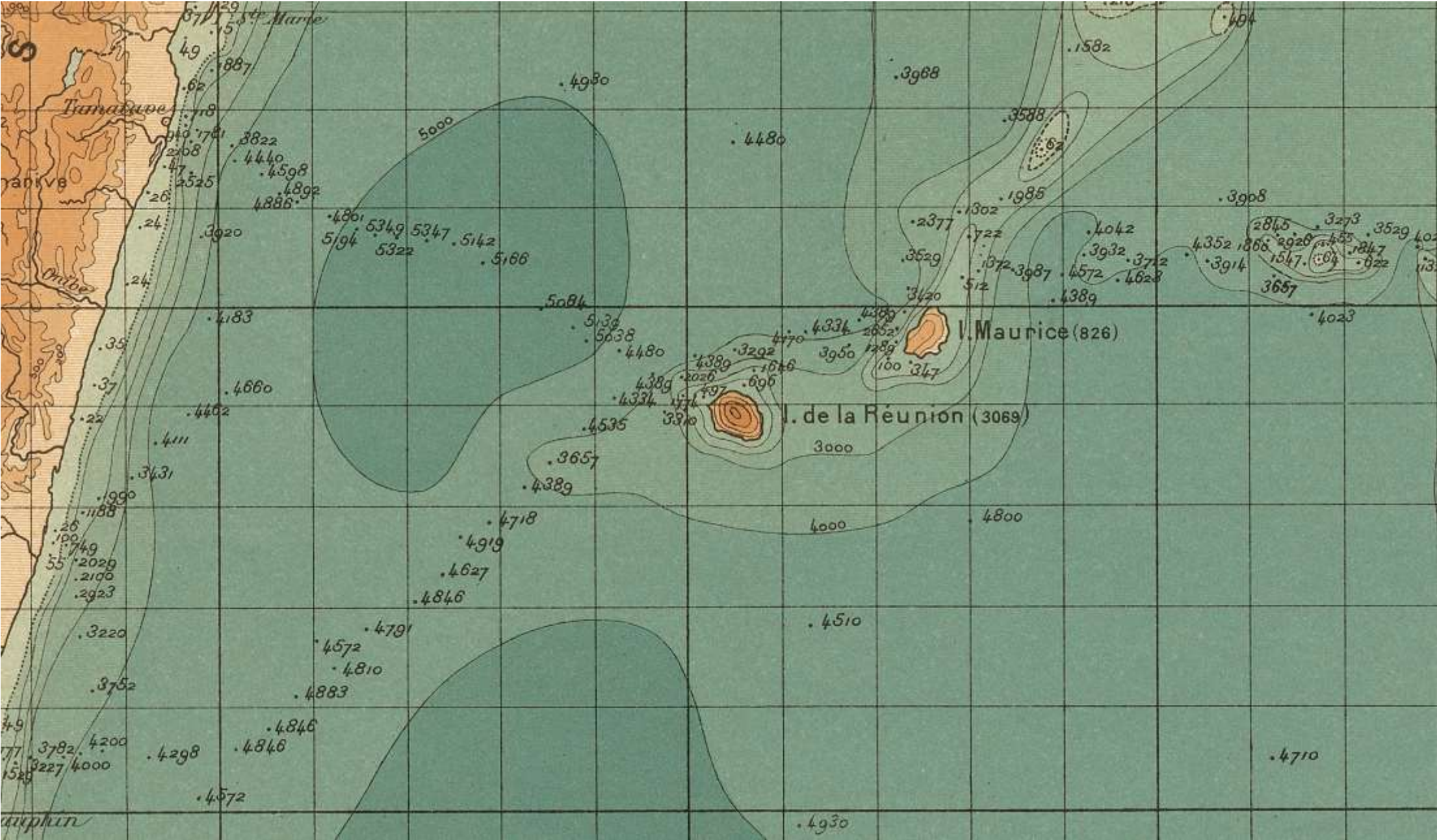
# GEBCO - Paper Charts to Global Grid



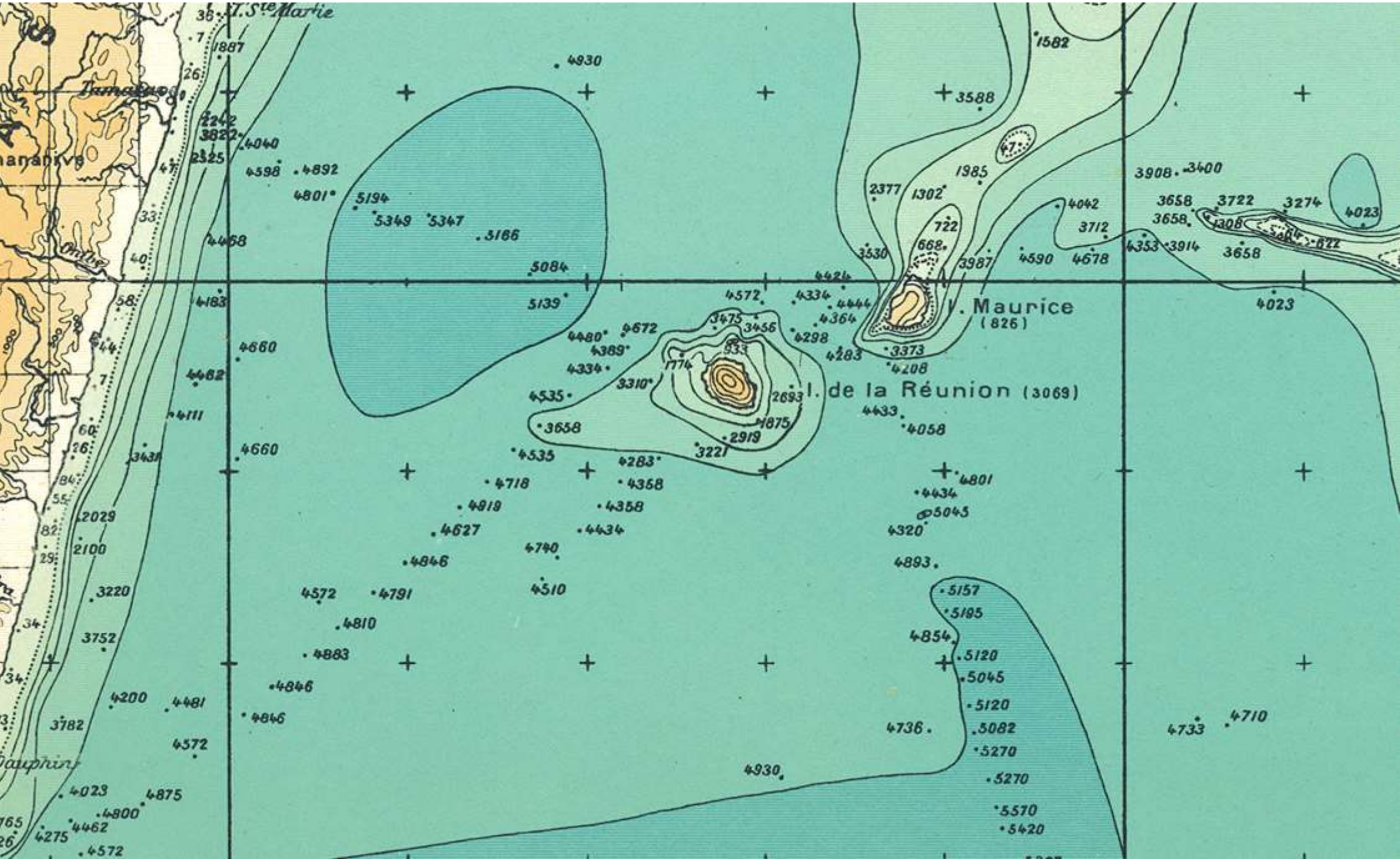
# 1st Edition (1903)



# 2nd Edition (1910 - 1930)



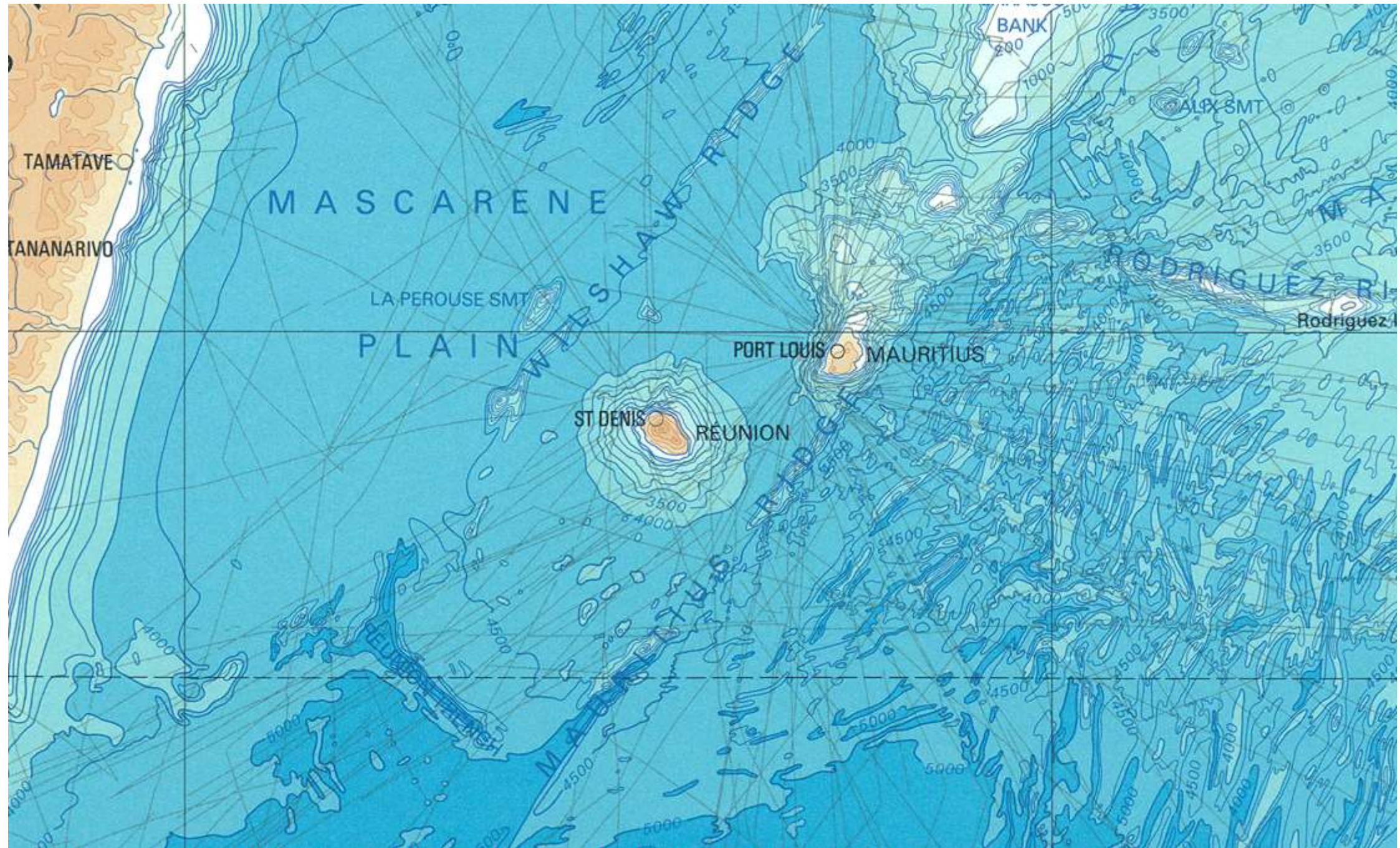
# 3rd Edition (1932 - 1966) (Only 21 sheets actually published)



4th Edition (1958 - 1973)

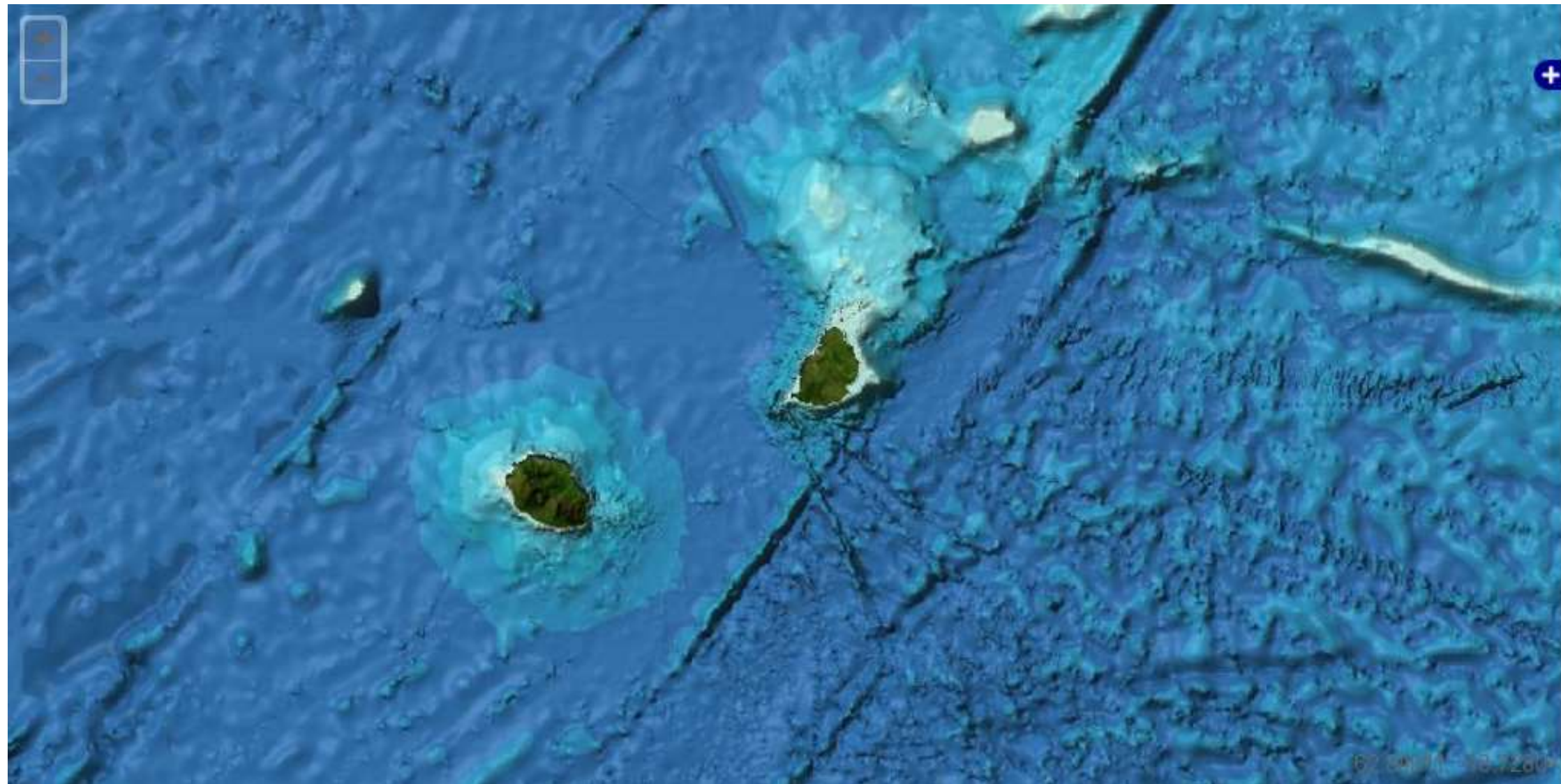


# 5th Edition (1973 - 1982)





# Gridded bathymetry data

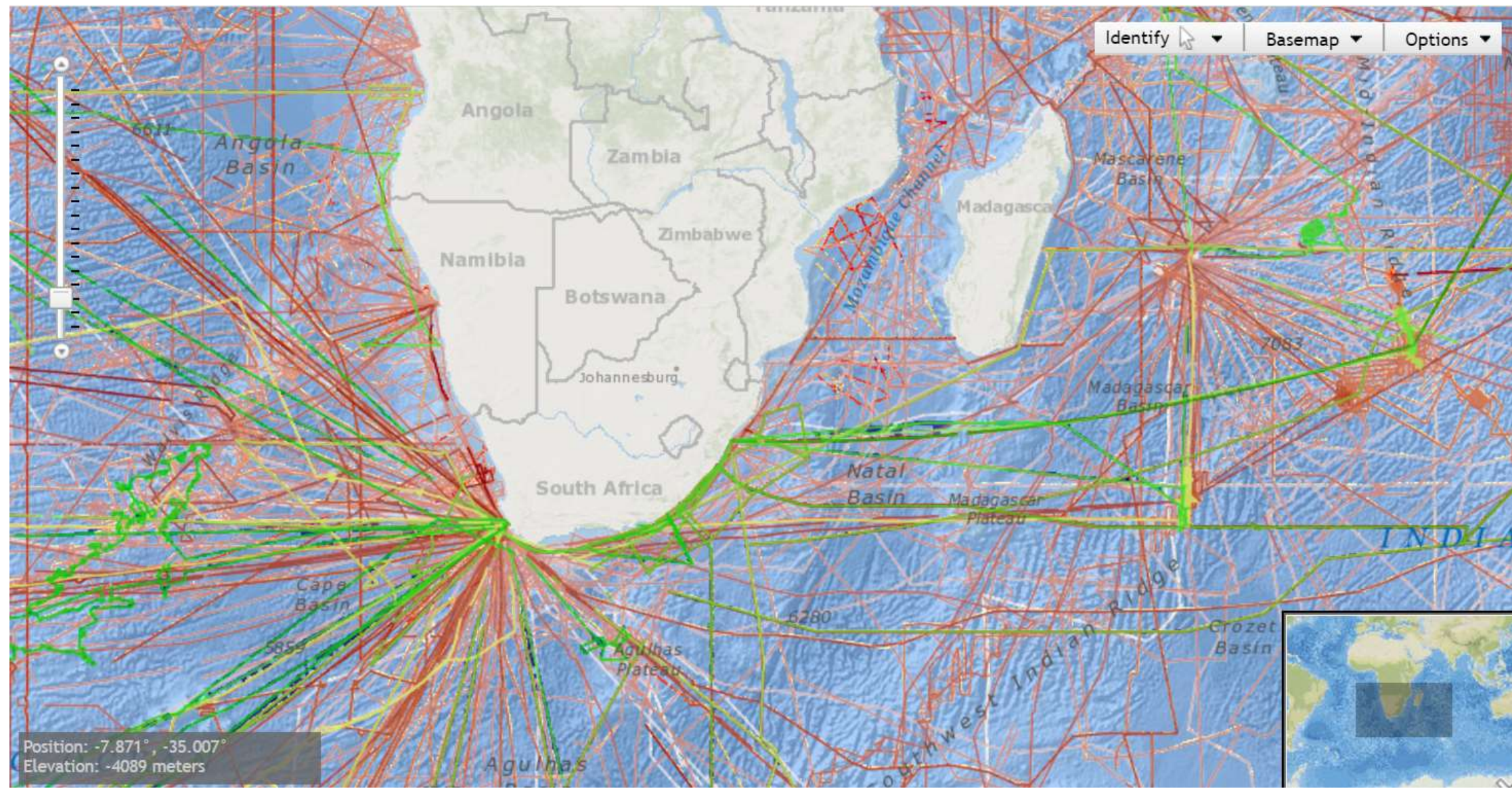


## GEBCO Source Identifier Grid

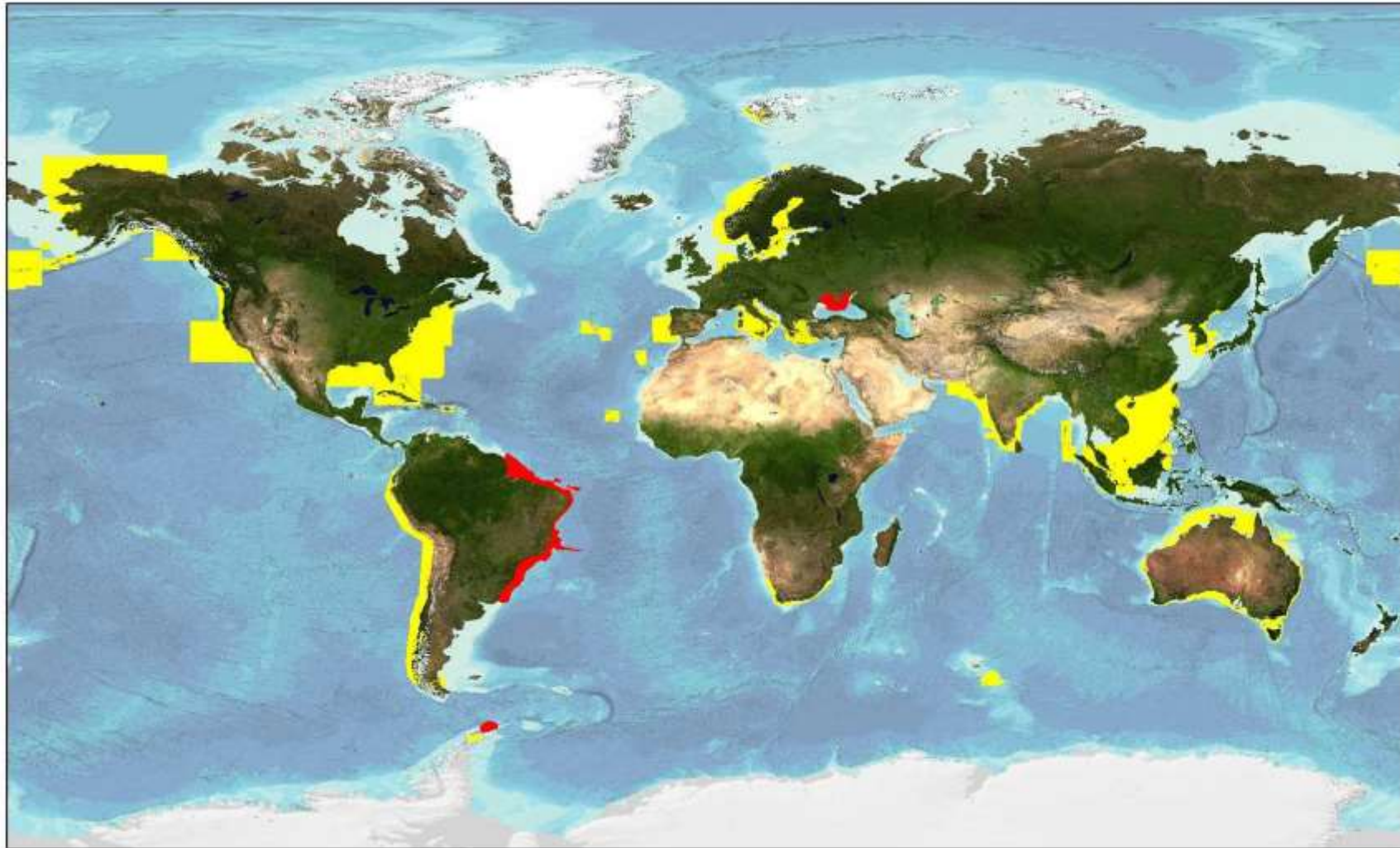


# Bathymetry Sources

## IHO DCDB



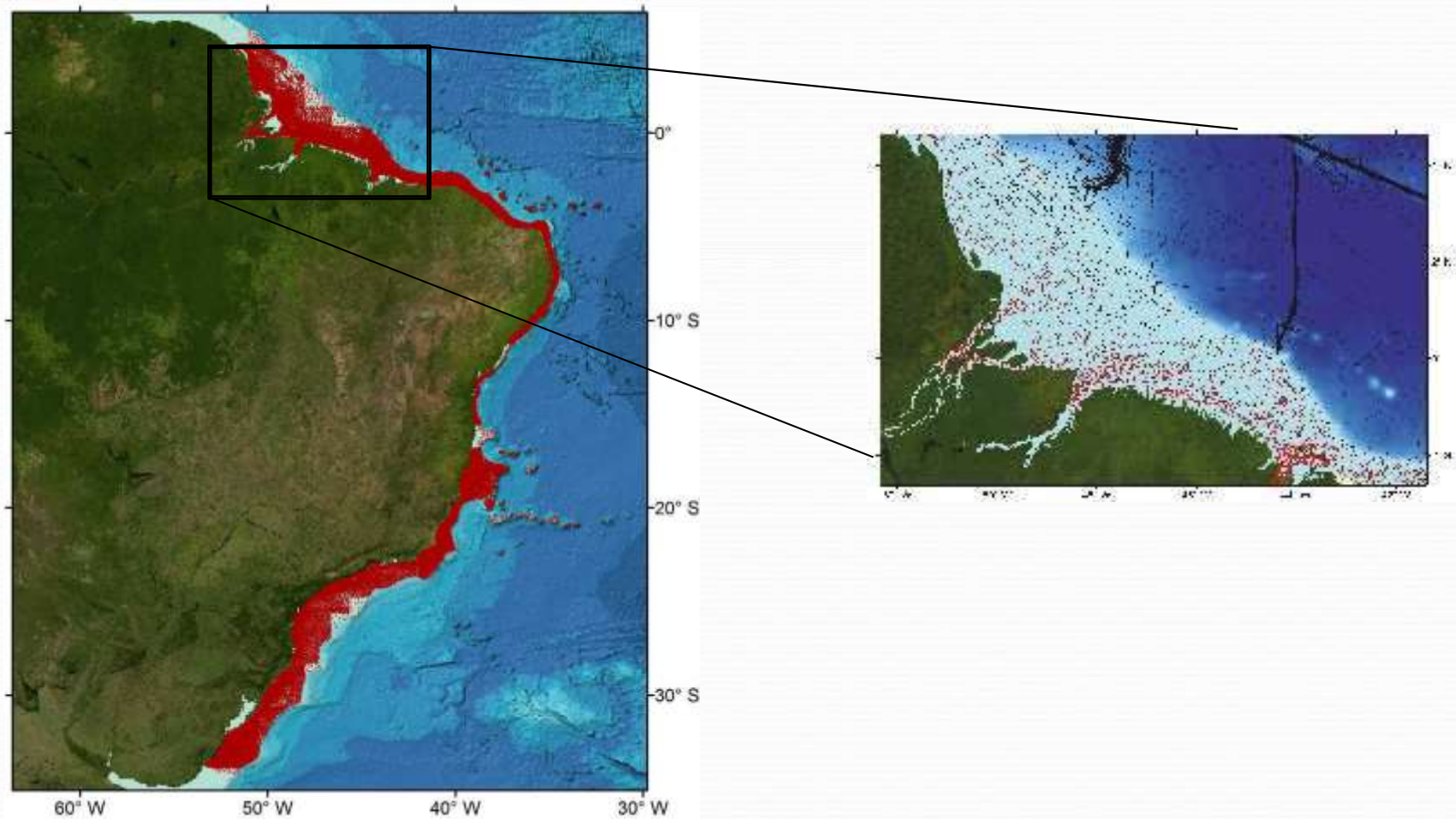
## Shallow water bathymetry – ENC data



ENC data coverage (usage bands 2 & 3) provided by IHO MS and organizations, to date, to GEBCO for grid updating work after calls in 2006 (yellow) and 2016 (red),

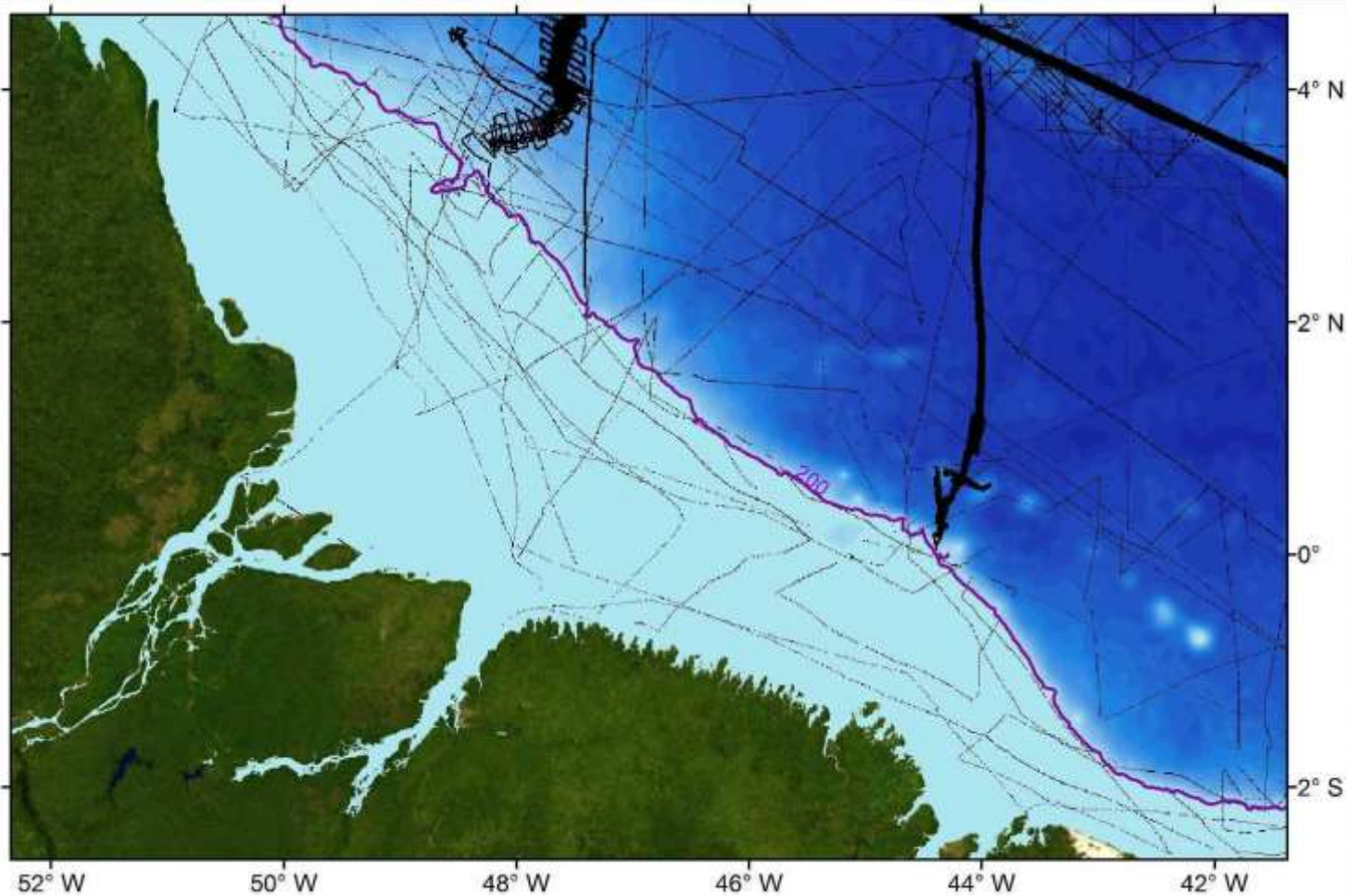
# Shallow water bathymetry – ENC data

Data for waters off Brazil



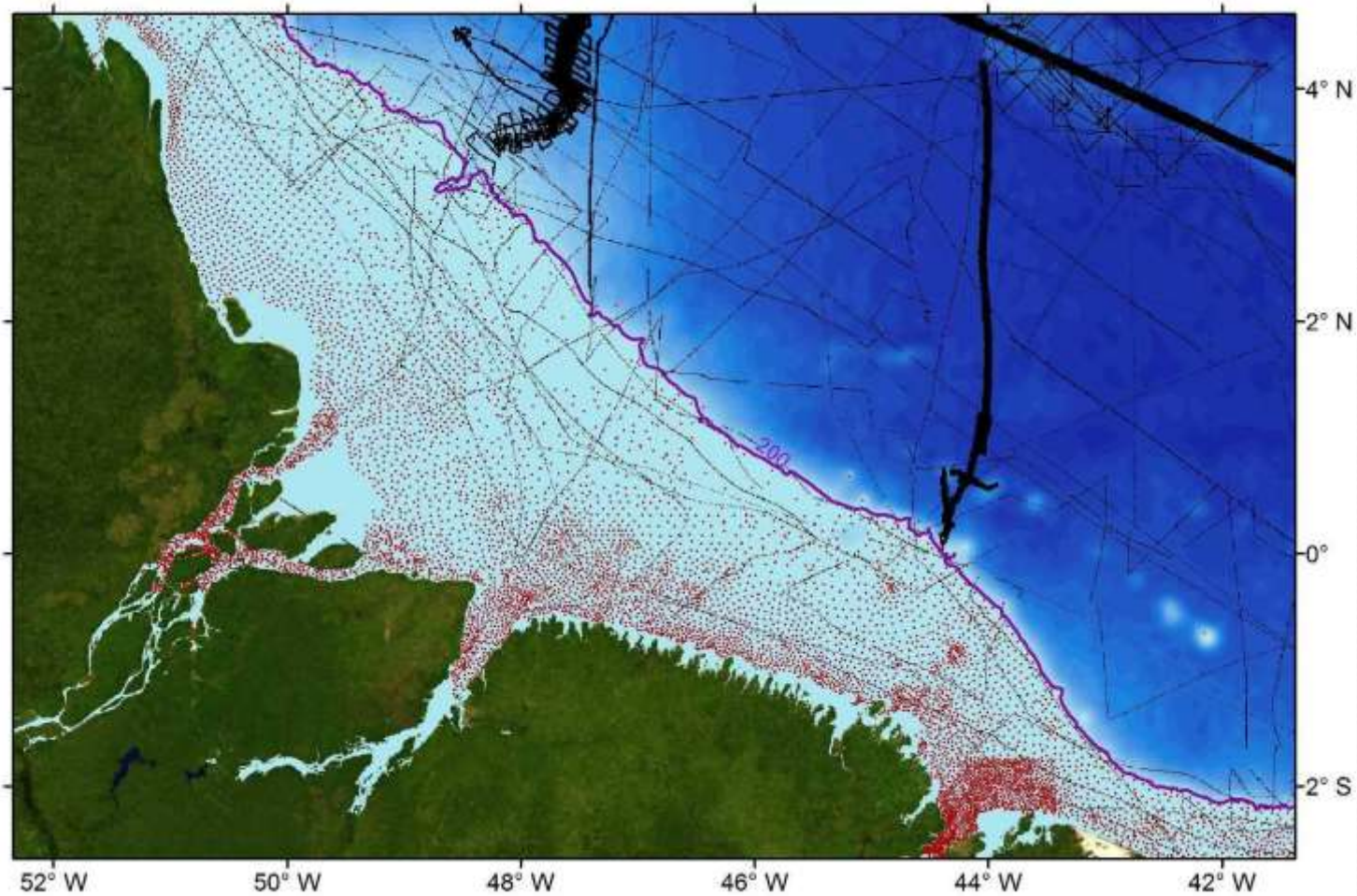
# Shallow water bathymetry data


- Current GEBCO trackline coverage (black lines)



# Shallow water bathymetry data

GEBCO trackline coverage (black lines), plus ENC soundings (red)





## Bathymetry Sources

### Crowd Source Bathymetry

The 5th Extraordinary International Hydrographic Conference (EIHC5) recognized the need to examine how best to collect bathymetric data acquired by non-conventional means, such as through crowdsourcing.

The Conference established a Crowd Source Bathymetry Working Group.

One of the main tasks of the CSBWG is to prepare a new IHO publication on policy issues for trusted crowd-sourced bathymetry,

B-12 - IHO Guidance Document on Crowd Source Bathymetry - seeking comments from Member States, observer organizations and stakeholders.

[www.iho.int](http://www.iho.int) → Standards & Publications → Download → Draft Publications for discussion

MS invited to provide comments – closing date 24 November 2017.

“Trusted Nodes,” the organizations or individuals serving as data liaisons between mariners (data collectors) and the DCDB.



# Regional mapping work

Sub-Committee on Regional Undersea **Mapping (SCRUM)** to:

- Primary objective of SCRUM is to build **closer collaboration between regional mapping efforts** .
- Regional grids are used to improve the **Global GEBCO grids**.

[www.gebco.net/regional\\_mapping/mapping\\_projects/](http://www.gebco.net/regional_mapping/mapping_projects/)



# Seabed 2030

**Seabed 2030 is a collaborative project between GEBCO and the Nippon Foundation.**

Its aim is to facilitate the complete mapping of the ocean floor by the year 2030.

Seabed 2030 is an initiative driven by a strong motivation to;

- empower the world to make policy decisions, use the ocean sustainably and
- undertake scientific research based on detailed bathymetric information of the Earth's seabed.

It builds on more than 100 year's of GEBCO's history in global seafloor mapping.

Its long-term aspirational goal is to map 100% of the World oceans floor by 2030 so that:

- no features of the accessible parts of the World Ocean floor larger than 100m remains to be portrayed;

## **Supporting documents;**

- [Seabed 2030 Road Map](#)
- [Seabed 2030 Business Plan](#)
- [www.gebco.net](http://www.gebco.net)

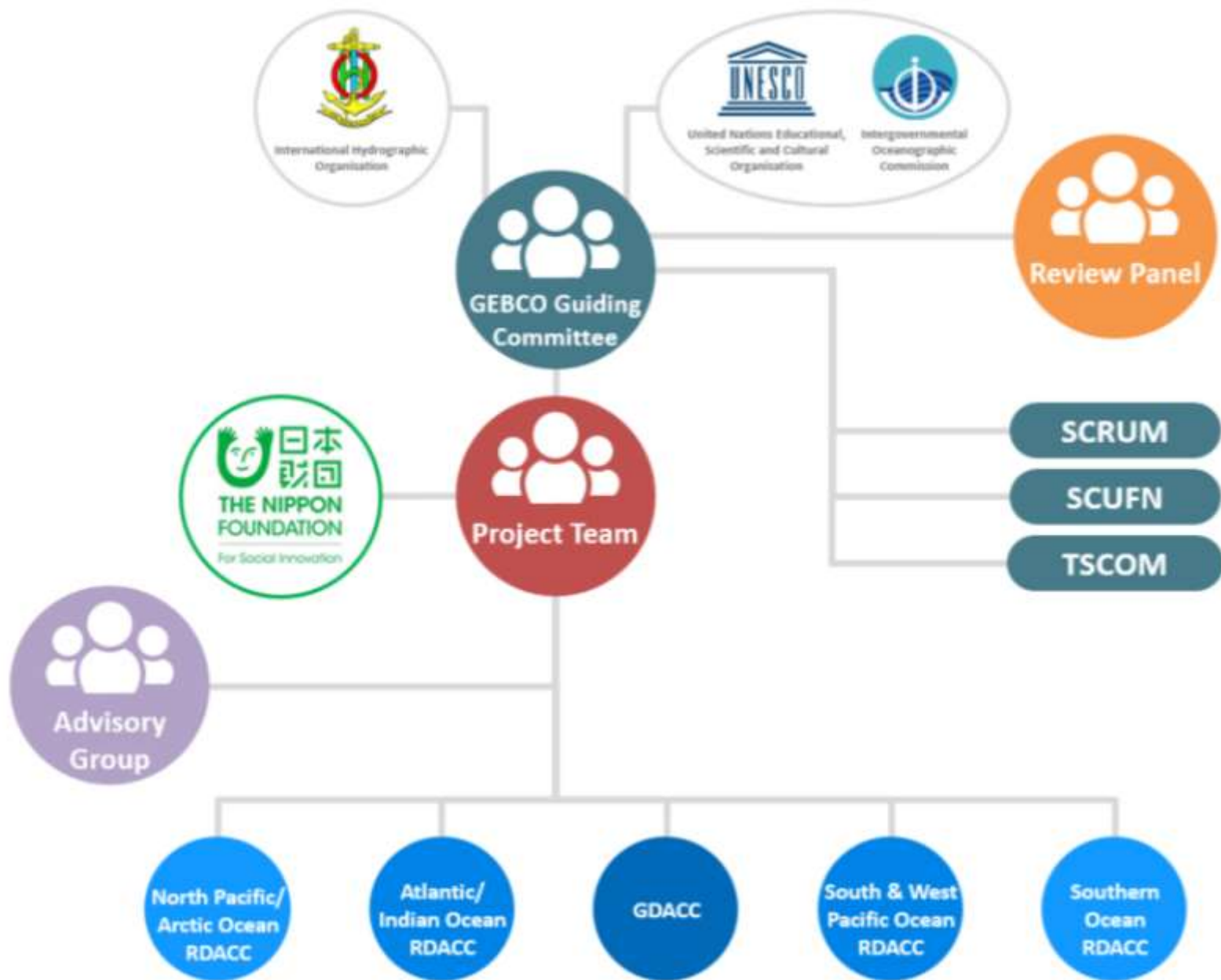


Figure 1. Seabed 2030 Project Structure.



**Thank you**