

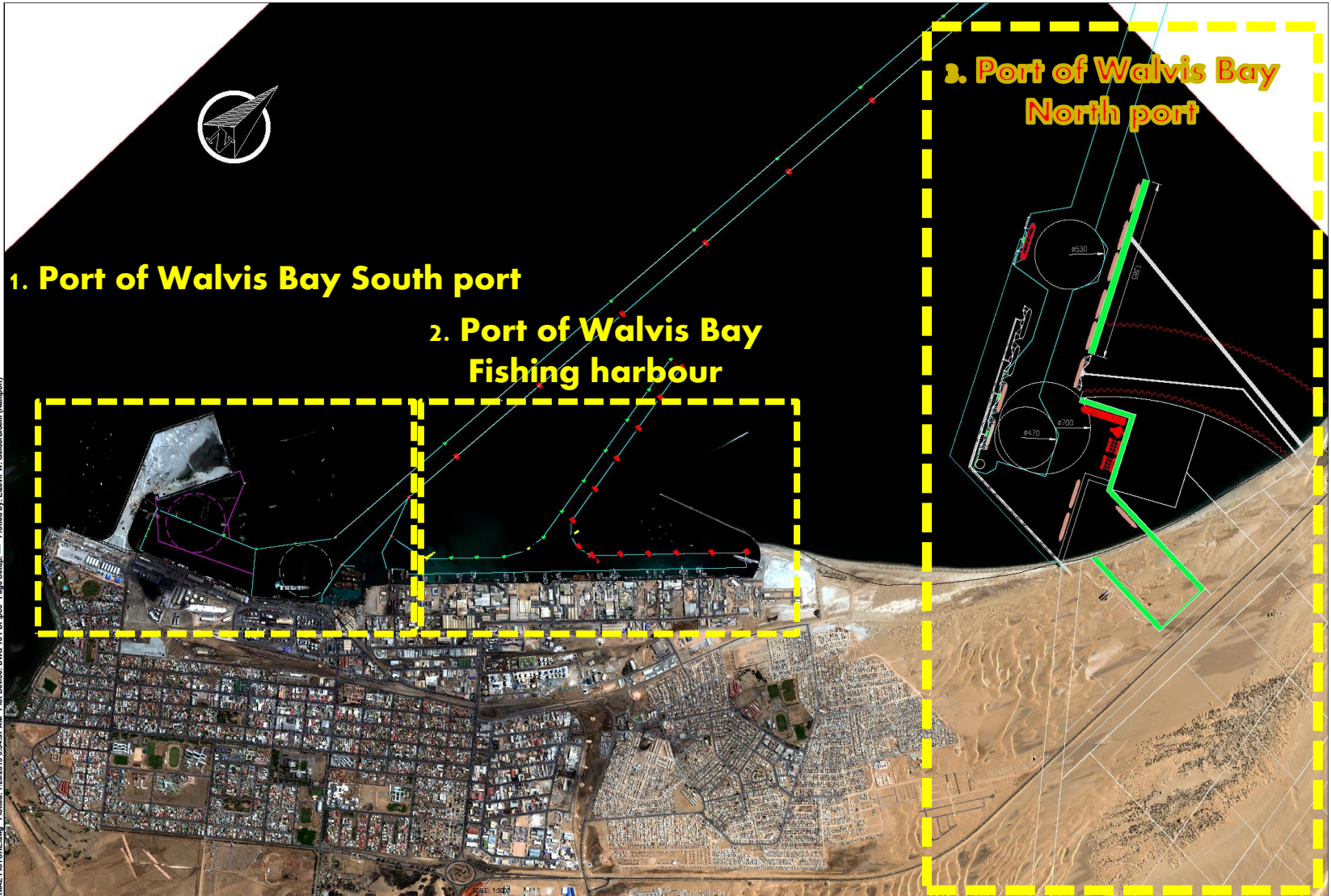
## “Port Development”

**August 2018**






# Port of Walvis Bay MASTER PLAN



Filename: POWB\_AERIAL\_PICTURE.dwg Plotted: 7/23/2015 9:54:57 AM Plot Device: DWG To PDF.pc3 Page Setup: --- Plotted by: Elzvir W. Gelderboom (Namport)



NAMIBIAN PORTS AUTHORITY  
 PORT ENGINEER'S DESIGN OFFICE  
 P. O. BOX 361  
 NO. 17, RIKUMBI KANDANGA RD.  
 WALVIS BAY, NAMIBIA  
 TEL.: +264 (64) 208 2376  
 MOBILE: +264 (0) 81 2755 214

PROJECT NAME:  
 PORT OF WALVIS BAY  
 SATellite IMAGE - 3 JUNE 2015

DRAWING NAME:  
 NAVIGATIONAL LAYOUT AND LAND AREA  
 DRAFT PORT MASTER PLAN

DRAWN:  
 ELZVIR GELDERBOEM  
 DESIGNED:  
 ELZVIR GELDERBOEM  
 CHECKED:  
 APPROVED:  
 BSEY USAB

NO.	REVISIONS	DATE	BY


PORT ENGINEER	
DATE	SCALE
JULY 2015	1:100
REGISTRATION NO.	



# Port of Walvis Bay South Port



Filename: D:\NVA\AERIAL\_PICTURE.dwg Plotted: 7/15/2015 5:57:53 PM Plot Device: DWG To PDF.pc3 Page Setup: --- Plotted by: Elzevir W. Gelderbloem (Namport)


 NAMIBIAN PORTS AUTHORITY  
 PORT ENGINEER'S DESIGN OFFICE  
 P. O. BOX 361  
 NO. 17, RIKUMBI KANDANGA RD,  
 WALVIS BAY, NAMIBIA  
 TEL: +264 (84) 208 2376  
 MOBILE: +264 (0) 81 2735 214

PROJECT NAME:  
 PORT OF WALVIS BAY  
 SATellite IMAGE - 3 JUNE 2015

DRAWING NAME:  
 NAVIGATIONAL LAYOUT AND LAND AREA  
 COMMERCIAL PORT

DRAWN:  
 ELZEVR GELDERBLOM  
 CHECKED:  
 ELZEVR GELDERBLOM  
 APPROVED:  
 BREY URB

NO.	REVISIONS	DATE	BY

PORT ENGINEER  
 DATE: JULY 2015 SCALE: NTS  
 REGISTRATION NO.



# PORT OF WALVIS BAY – South Port



## Port of Walvis Bay: existing commercial port facilities:

1. 150+1330 hectares of land area;
2. 8 commercial berths (+5 under construction);
3. 1 x link span ro-ro berth;
4. 2 x small craft harbours;
5. 1 x 45,000dwt Tanker berth @ -10.4m CD water depth (2 x 60,000dwt under construction);
6. 1 x 2000ton Syncrolift dry docking facility;
7. 3 x floating dry docks, max 15000ton capacity;
8. Berths 1 to 3 (container berths) = -14.0m CD water depth;
9. Berths 4 to 8 (multipurpose berths) = -10.6m CD water depth;
10. South Port Entrance channel: 9km x 134m x 14.5m
11. North Port Entrance channel: 7km x 180m x 16.5m



# CURRENT MEGA PROJECTS



The two mega projects currently under construction in the Port of Walvis Bay is directly linked to the NDP5 goal of Namibia becoming a LOGISTICS HUB:

1. New Container Terminal on Reclaimed Land
2. Port of Walvis Bay North Port program



# PROJECT FOCUS

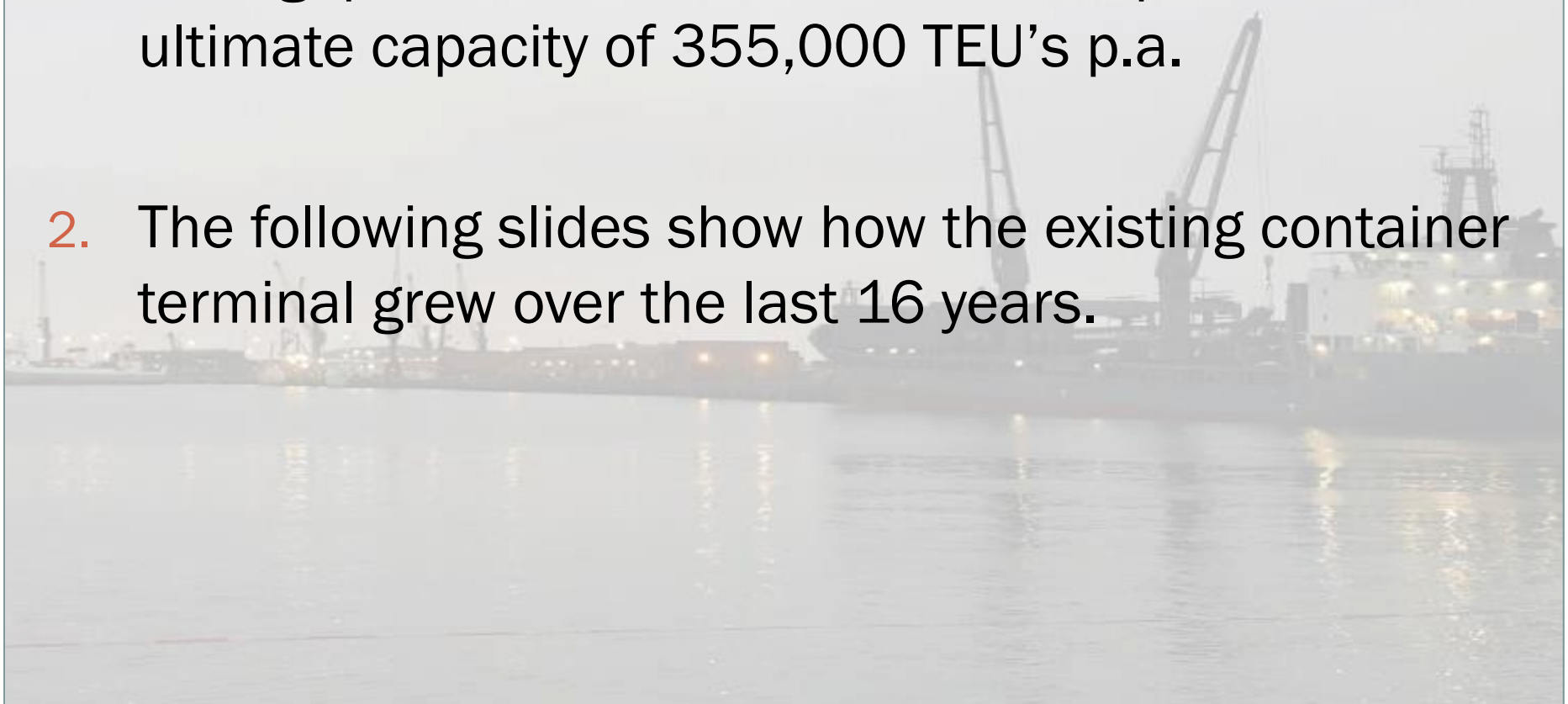
- **PORT OF WALVIS BAY NEW CONTAINER TERMINAL ON RECLAIMED LAND**
- **BUSINESS CASE**
  - ✦ Container Transshipment hub for West Africa, which directly talks to the logistics hub concept



# New Container Terminal Business Case



1. In 2011 the existing container terminal reached a throughput volume of 340,000 TEU's p.a., vs a ultimate capacity of 355,000 TEU's p.a.
2. The following slides show how the existing container terminal grew over the last 16 years.





# OPTIMIZATION OF EXISTING CONTAINER TERMINAL - AUG 2002





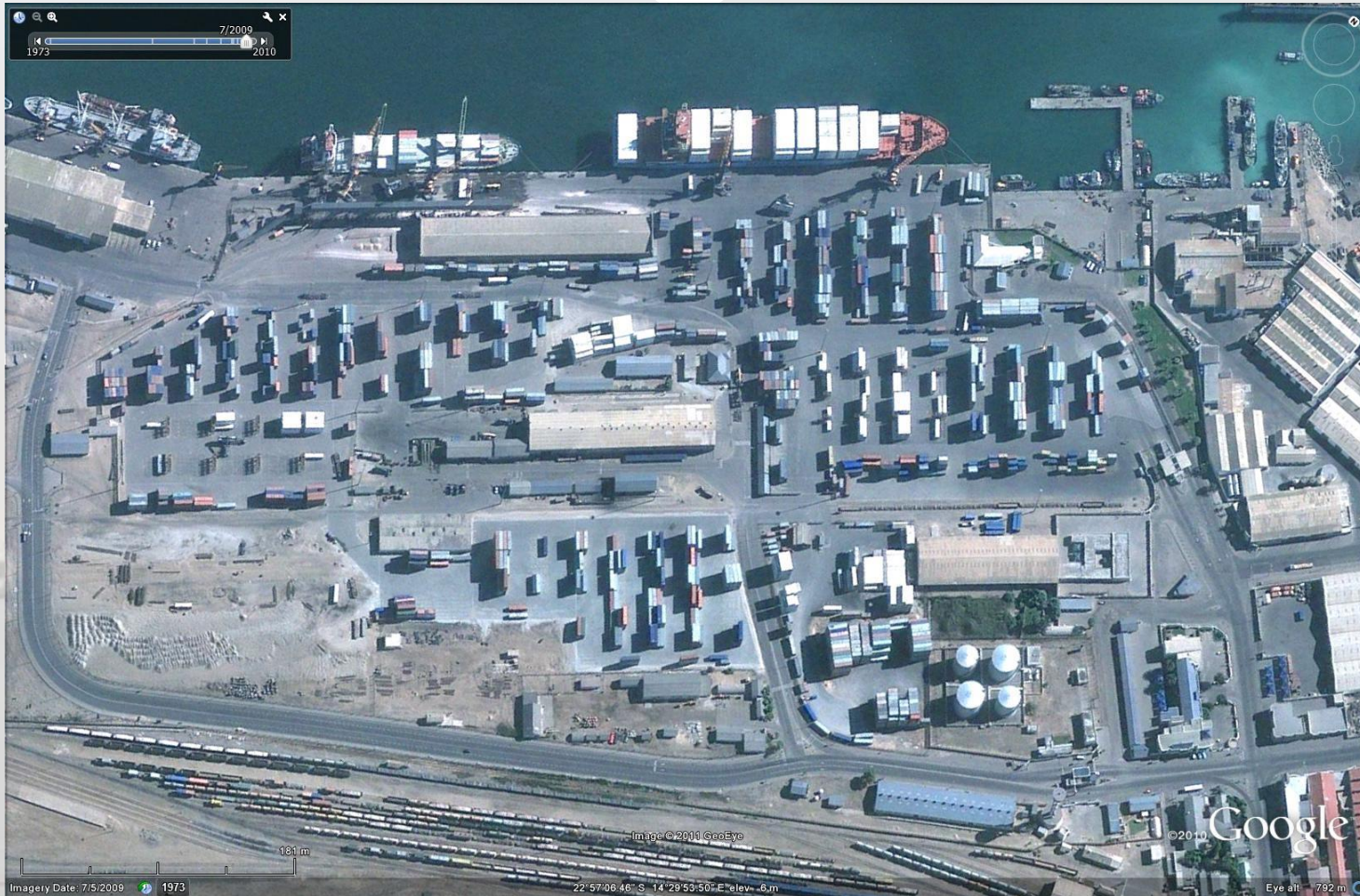


# OPTIMIZATION OF EXISTING CONTAINER TERMINAL – MARCH 2008





# OPTIMIZATION OF EXISTING CONTAINER TERMINAL - JULY 2009





# OPTIMIZATION OF EXISTING CONTAINER TERMINAL - SEPT 2010





# OPTIMIZATION OF EXISTING CONTAINER TERMINAL – **JAN 2015**





# New Container Terminal Business Case



1. The New Container Terminal will have a capacity of at least 750,000 TEU's p.a.
2. Revised traffic forecasts show that this capacity will be sufficient up to at least 2025 in the high scenario;
3. Feasibilities studies for the project commenced in 2005 and were concluded in 2009.



PORT OF WALVIS BAY NEW CONTAINER  
TERMINAL ON RECLAIMED LAND  
PROJECT PICTURE ALBUM

STATUS AS AT SEPTEMBER 2014



PORT OF WALVIS BAY NEW CONTAINER  
TERMINAL ON RECLAIMED LAND  
PROJECT PICTURE ALBUM

STATUS AS AT DECEMBER 2014



PORT OF WALVIS BAY NEW CONTAINER  
TERMINAL ON RECLAIMED LAND  
PROJECT PICTURE ALBUM

STATUS AS AT APRIL 2015





PORT OF WALVIS BAY NEW CONTAINER  
TERMINAL ON RECLAIMED LAND  
PROJECT PICTURE ALBUM

STATUS AS AT MAY 2015

OF WALVIS BAY NEW CONTAINER TERMINAL ON RECLAIMED LAND PROJECT  
CT STATUS AS AT 9 MARCH 2016



PORT OF WALVIS BAY NEW CONTAINER  
TERMINAL ON RECLAIMED LAND  
PROJECT PICTURE ALBUM

STATUS AS AT MARCH 2016



PORT OF WALVIS BAY NEW CONTAINER  
TERMINAL ON RECLAIMED LAND  
PROJECT PICTURE ALBUM

STATUS AS AT AUG 2017

**PORT OF WALVIS BAY CONTAINER TERMINAL ON RECLAIMED LAND  
PROGRESS REPORT AS AT JANUARY 2018**

**OVERALL PROGRESS - 76%**



**MARINA BREAKWATER: 30%**

**PASSENGER  
LINER JETTY:  
90%**

**WORKSHOP: 70%**

**GROUND  
IMPROVEMENT: 95%**

**OPERATIONS  
CENTRE: 65%**

**QUAY WALL: 77%**

**LAND  
RECLAMATION:  
95%**

**DREDGING: 97%**

**REVTMENTS: 95%**



# 1. New Container Terminal on Reclaimed Land



## Brief description of the project:

- Commenced in May 2014
- Project contains more than 20 contracts;
- Biggest contract is an EPC Turnkey contract for 90% of all civil, structural, mechanical and electrical work including dredging and reclamation.
- EPC Contractor: China Harbour Engineering Company (CHEC);
- Project Value: R4.2 billion
- Funding from African Development Bank for NAD 2.98 billion;
- Equity from GRN and Namport;
- Completion date = 2019;



PORT OF WALVIS BAY NEW CONTAINER  
TERMINAL ON RECLAIMED LAND  
PROJECT PICTURE ALBUM

STATUS AS AT FEB 2018



# New Container Terminal footprint





# GROWTH POTENTIAL = 170 ha total







# New Walvis Bay Container Terminal





# New Walvis Bay Container Terminal





# New Container Terminal on Reclaimed Land



**OVERALL PROJECT PROGRESS TO DATE:**

**85%**

On schedule to commission by 2019

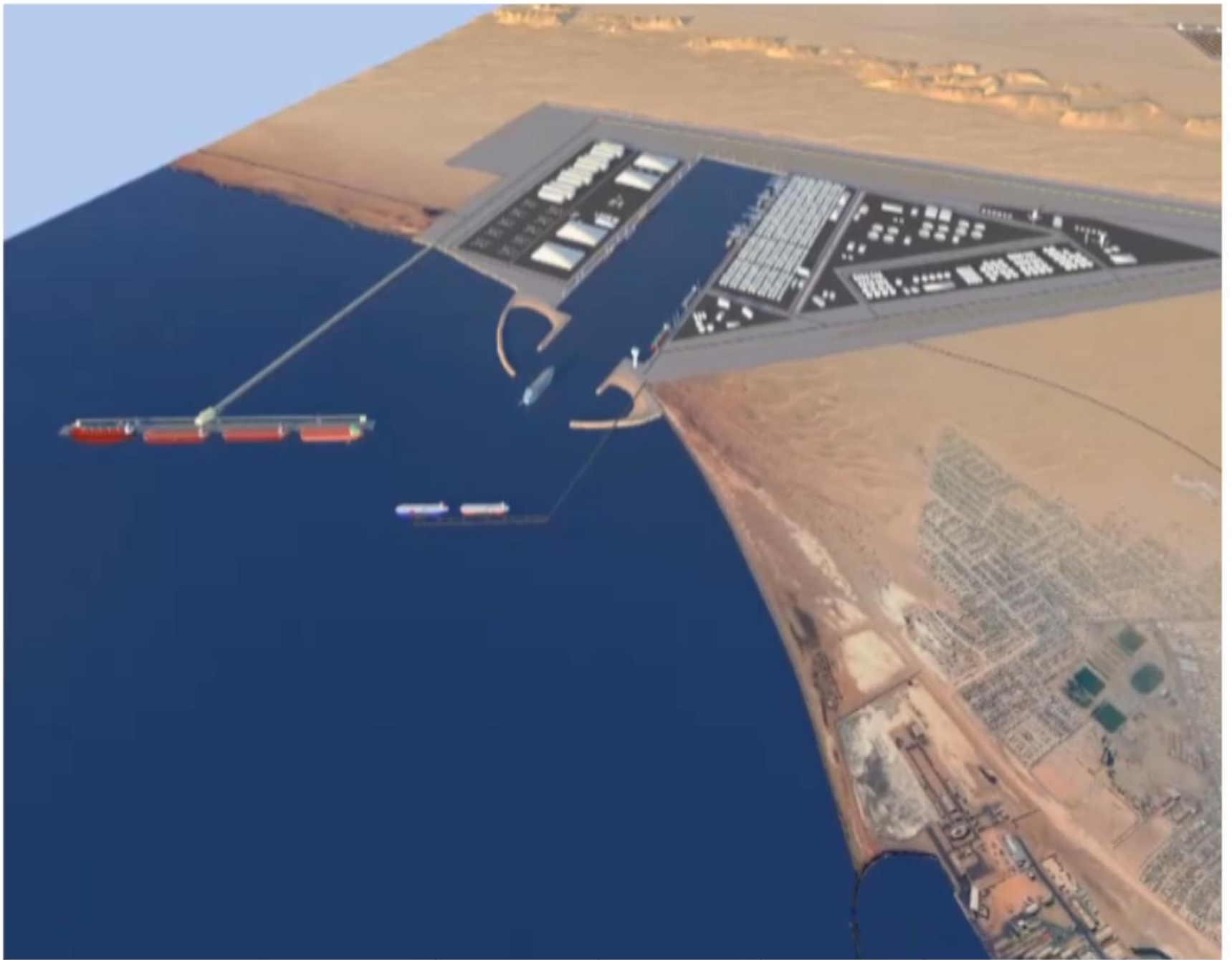


# PORT OF WALVIS BAY North Port

## Business Case:

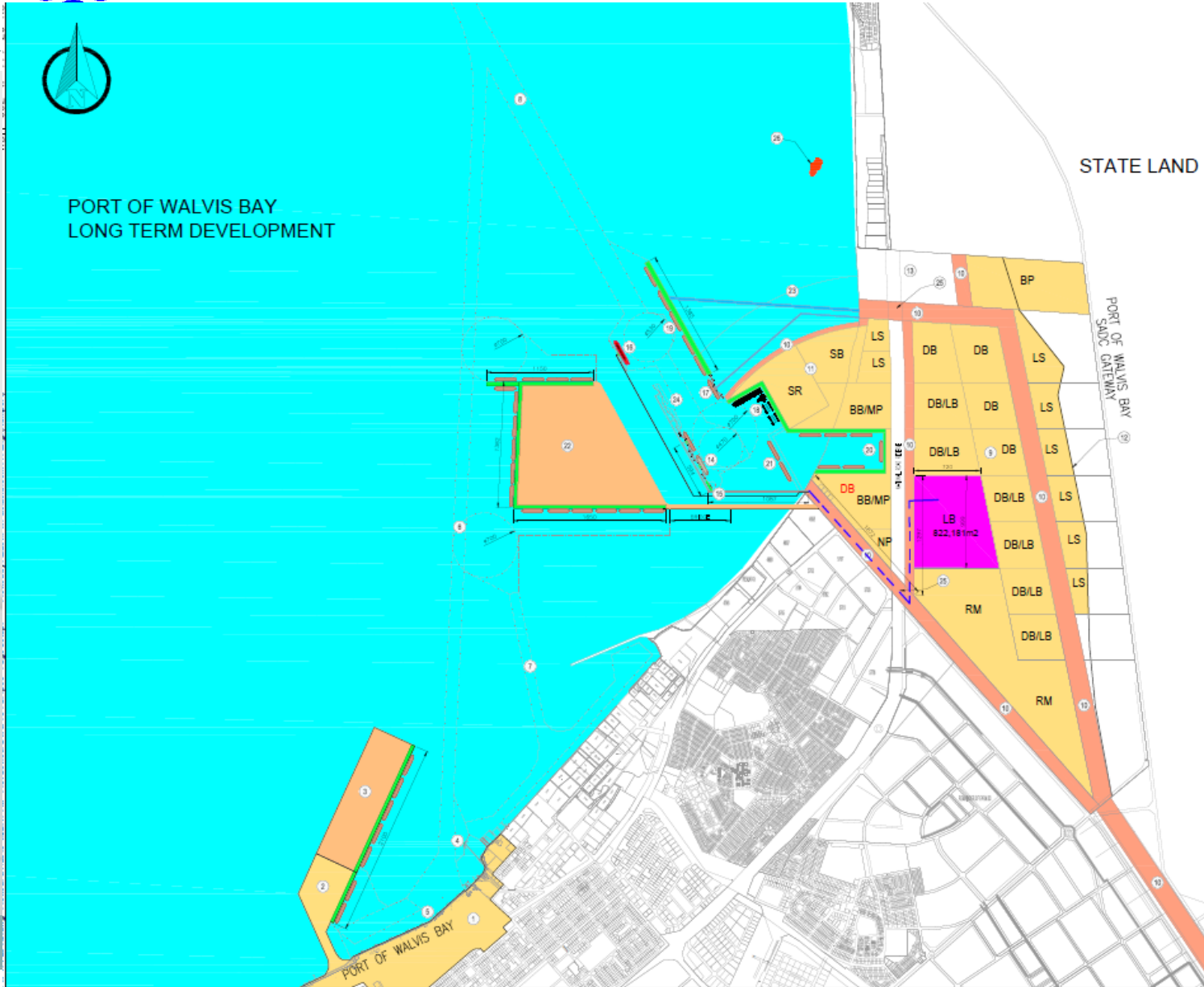
- Gateway into Southern Africa
- Logistics Hub







# Port of Walvis Bay – Section 3 – North port



**LEGEND:**

<span style="display:inline-block; width:15px; height:15px; background-color:yellow;"></span>	PORT OF WALVIS BAY - LAND AREAS
<span style="display:inline-block; width:15px; height:15px; background-color:orange;"></span>	PORT OF WALVIS BAY - LAND AREAS SPECIFIC FOR SERVICES AND UTILITIES CORRIDORS
<span style="display:inline-block; width:15px; height:15px; background-color:cyan;"></span>	PORT OF WALVIS BAY - WATER AREA - LEGAL JURISDICTION
<span style="display:inline-block; width:15px; border-bottom:1px dashed black;"></span>	SEALED DREDGED TOE LINES
<span style="display:inline-block; width:15px; border-bottom:1px solid green;"></span>	NEW QUAY WALL
<span style="display:inline-block; width:15px; height:15px; background-color:magenta;"></span>	LAND AREA FOR LIQUID BULK AND GAS - ALLOCATION APPROVED
<span style="display:inline-block; width:15px; border-bottom:1px dashed purple;"></span>	PRODUCT PIPELINES RUNNING IN SERVICE

**LAND USE ZONING**

BP	BUFFER BOND
BB	BREAK BULK
DB	DRY BULK
DB	TEMPORARY DRY BULK
MP	MULTIPURPOSE
LB	LIQUID BULK AND GAS (TANK FARMS)
LS	LOGISTICAL SUPPORT / WAREHOUSING
SR	SHIP REPAIR
SB	SUPPLY BASE
NP	NAMPORT ADMIN
RM	RAILWAY MARSHALLING YARD AND RAIL TERMINALS

**KEY NOTES:**

KEY NOTES:	COMPLETION
1 EXISTING PORT OF WALVIS BAY LAND AREA	
2 NEW CONTAINER TERMINAL ON RECLAIMED LAND	2017
3 FUTURE EXTENSION OF THE NEW CONTAINER TERMINAL	2025 AND BEYOND
4 EXISTING TANKER BERTH IN THE PORT OF WALVIS BAY	
5 BERTHS 1 TO 8 - EXISTING PORT OF WALVIS BAY	
6 ENTRANCE CHANNEL AT -14.9m CD - EXISTING PORT OF WALVIS BAY	
7 ENTRANCE CHANNEL AT -8.5m CD - EXISTING PORT OF WALVIS BAY FISHING HARBOUR	
8 ENTRANCE CHANNEL AT -16.5m CD - NEW PORT OF WALVIS BAY SADC GATEWAY	2017
9 PORT OF WALVIS BAY SADC GATEWAY LAND AREA + 1330 Ha EXCLUSION LAND TO BE RECLAIMED	2017
10 SERVICES AND UTILITIES CORRIDORS	2020
11 NEW LAND TO BE RECLAIMED	2017
12 WESTERN EDGE OF HIGH DUNE BELT	
13 PRIVATE LAND - MARICULTURE	
14 PHASE 1: OIL TERMINAL AT SADC GATEWAY	2017
15 PHASE 1: SMALL CRAFT HARBOUR AT SADC GATEWAY	2017
16 PHASE 2: LNG TERMINAL AT SADC GATEWAY	2018
17 PHASE 3: BULK TERMINAL AT SADC GATEWAY	2018
18 PHASE 4: SHIP AND RIG REPAIR YARD AT SADC GATEWAY	2018
19 PHASE 5: BOTSWANA COAL TERMINAL AT SADC GATEWAY	2025
20 FUTURE DIG OUT BASIN AT SADC GATEWAY	2025 OR BEYOND
21 ALTERNATIVE TO DIG OUT BASIN	
22 LONG TERM FUTURE PORT DEVELOPMENT AREA	FUTURE
23 LONG TERM LAND RECLAMATION BOUNDARY	FUTURE
24 FUTURE LIQUID BULK TERMINALS	FUTURE
25 GRADE SEPARATED ROAD CROSSING	
26 QUAND PLATFORM	





## Port of Walvis Bay – Section 3 – North port



### Phase 1: Liquid Bulk Terminal

- Entrance channel and turning basin to new port;
- 2 x 60,000dwt tanker berths;
- Access trestle;
- Product pipelines;
- Etc.
- Being implemented by the Ministry of Mines and Energy,
- commenced on 9 Jan 2015, for commissioning by 2018.
- Progress = 90%



# Port of Walvis Bay – Section 3 – North port

**PORT OF WALVIS BAY NORTH PORT  
PROGRESS AS AT 23 MAY 2016**

**PHASE 1: LIQUID BULK TERMINAL**







## Port of Walvis Bay – Section 3 – North port



### Phase 2: LNG Terminal for new power plant

- Currently on hold
- NAD 1.5 billion

### Phase 3: Multipurpose bulk terminal (<10 million Tons p/a)

- Feasibility study will commence in 2019;
- NAD 2 billion

### **FUTURE PHASES**

- To be developed by PPP, where Namport awards concessions to private terminals;



# CAPITAL PROJECTS UPDATE



## Port of Luderitz

1. New deeper water port at Angra Point - **Strategic Environmental Impact Assessment study is currently underway;**
2. To be developed by PPP's, where Namport acts as the landlord only;



# Port of Luderitz





# Port of Luderitz Agra Point

15.055 °

15.105 °

15.155 °

15.205 °

-26.615 °

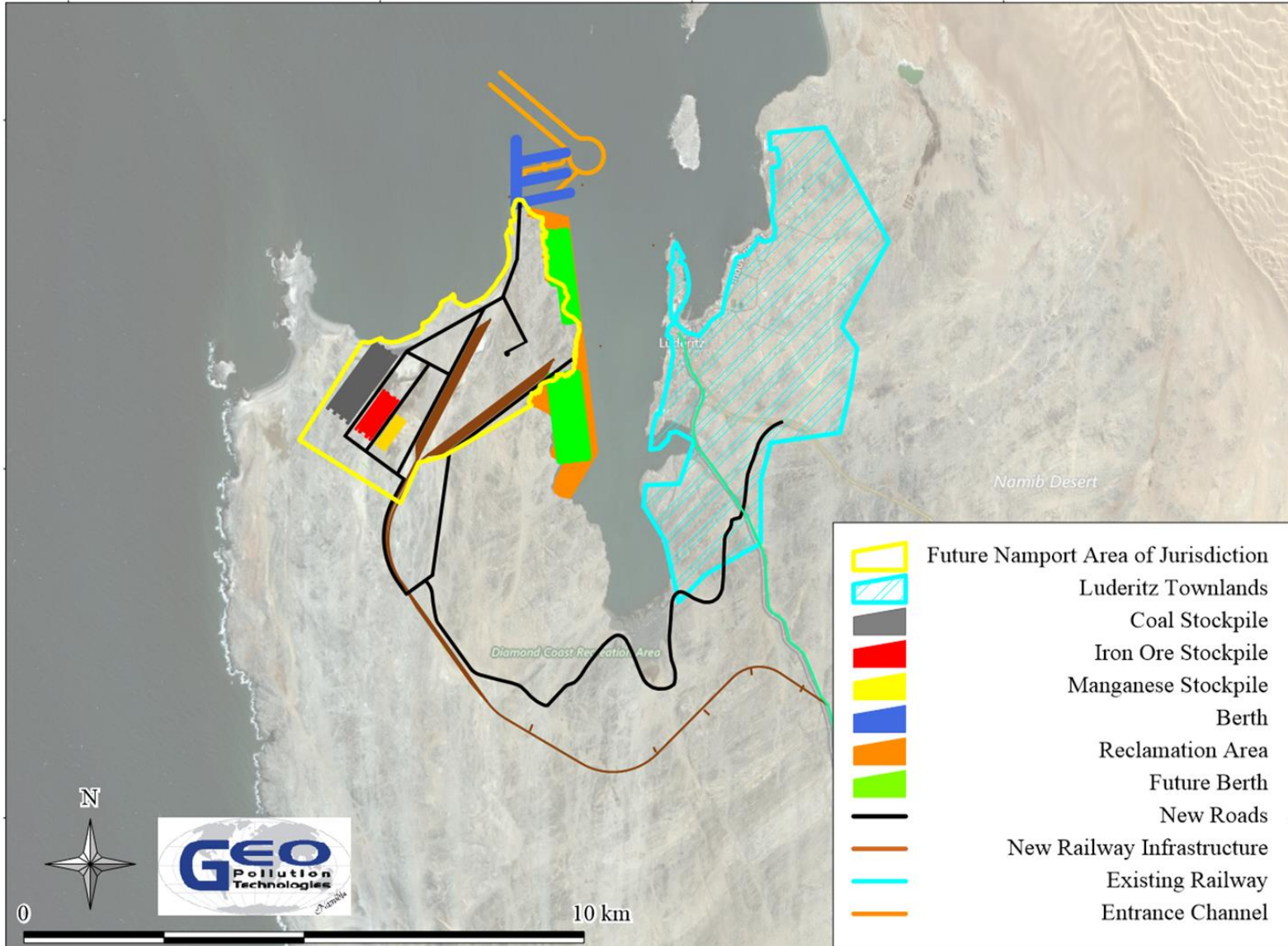
-26.665 °

-26.715 °

-26.615 °

-26.665 °

-26.715 °



- Future Namport Area of Jurisdiction
- Luderitz Townlands
- Coal Stockpile
- Iron Ore Stockpile
- Manganese Stockpile
- Berth
- Reclamation Area
- Future Berth
- New Roads
- New Railway Infrastructure
- Existing Railway
- Entrance Channel





**THANK YOU**

