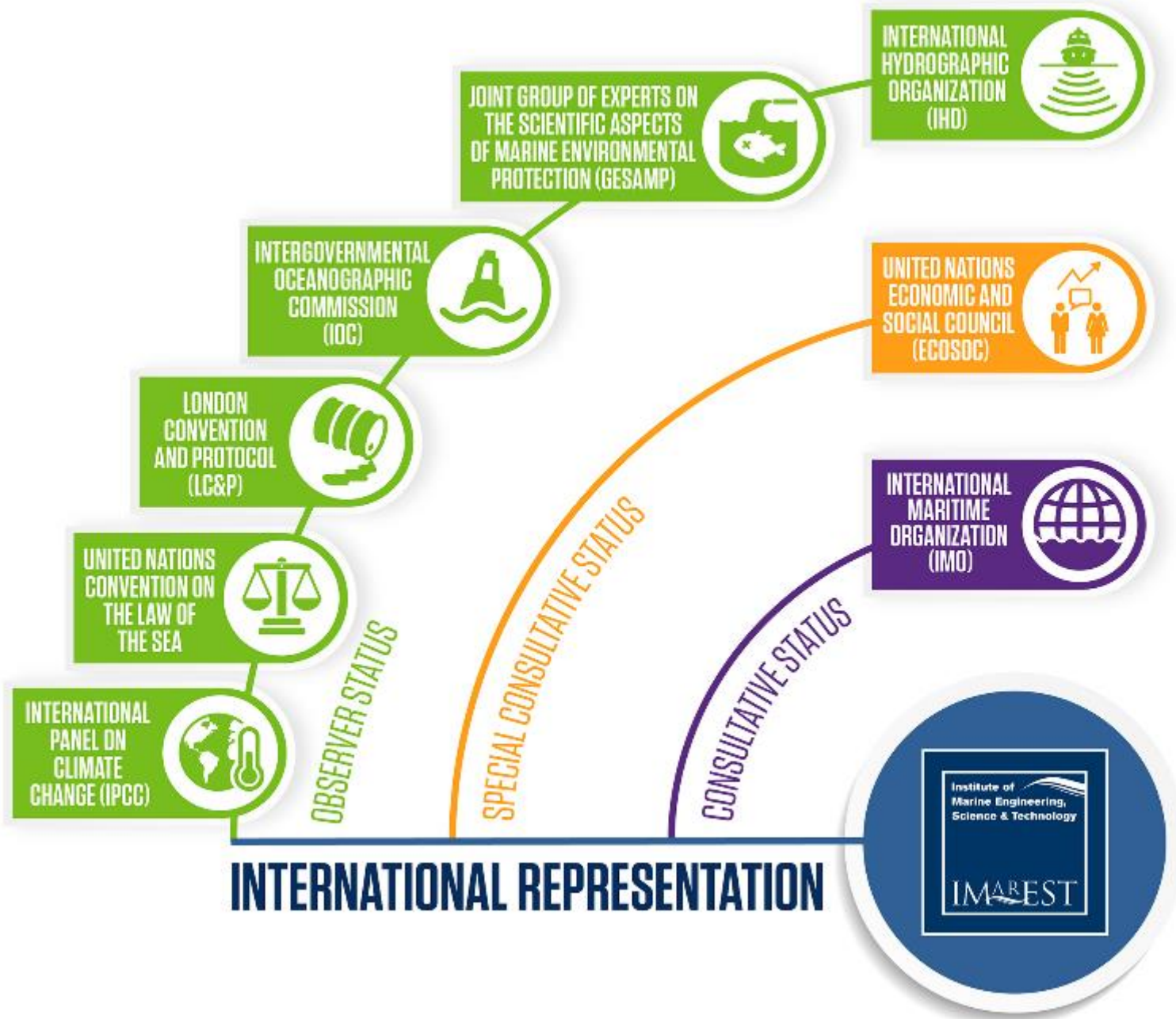


About the IMarEST



- **Professional membership body since 1889**
 - 22,000+ individual members working in marine sector
 - Members in 128 countries / 50 local branches
 - Professional qualifications for members
- **Provider of education, training and professional development activities**
 - Technical events, books, journals, BSc / MSc e-learning degrees, capacity building and short courses
- **Non Governmental Organization (NGO)**
 - Representing members views and provision of independent technical advice at IGO's and across the UN system



e-learning education & training



MLA COLLEGE | IN PARTNERSHIP WITH PLYMOUTH UNIVERSITY

DipHE Hydrography for Professionals
PGDip/MSc Advanced Hydrography for Professionals

MLA COLLEGE | IN PARTNERSHIP WITH PLYMOUTH UNIVERSITY

Sustainable Maritime Operations
BSc | BSc (Hons) | PGCert | PGDip | MSc

DISTANCE LEARNING PROGRAMMES WITH FULL TUTOR SUPPORT

| LEVEL | TITLE |
|---|---|
| ACCESS to Undergraduate and Postgraduate Programmes | Sustainable Maritime Operations Access Course |
| | Introductory Module for Hydrography courses |
| UNDERGRADUATE | BSc Sustainable Maritime Operations |
| | BSc (Hons) Sustainable Maritime Operations |
| | DipHE Hydrography for Professionals |
| | PGCert Sustainable Maritime Operations |
| POSTGRADUATE | PGDip Sustainable Maritime Operations |
| | MSc Sustainable Maritime Operations |
| | PGDip Advanced Hydrography for Professionals |
| | MSc Advanced Meteorology for Professionals |
| | MSc Advanced Navigation for Professionals |
| | MSc Advanced Oceanography for Professionals |
| | MSc Advanced Hydrography for Professionals |

*Residential practicals are held in Plymouth, UK and/or Otago, NZ. Supplement fee may vary.

Gain qualifications and degrees from home, or at sea, with courses available to download via web and smartphone apps.

www.mla-uk.com

E-learning training for SAIHC

Access 6 short lecture videos and quiz – share with your colleagues!



Coastal and marine activities

In this lecture, Dr Steve Fletcher introduces you to the range of competing uses that exist in coastal and marine areas whilst also considering the interactions between these activities. Steve then explores the usage of Integrated Coast Management, considering it as a mechanism to manage a...

Video Completed

Viewed? [Yes](#) [No](#) [View](#)



Maritime zones and the Law of the Sea (part 1)

Dr Steve Fletcher starts this lecture by introducing you to the basis of the United Nations Convention of the Law of the Sea (UNCLOS). Steve considers the maritime zones as delineated under UNCLOS before looking at the impact of UNCLOS on marine environmental protection and marine...

Video Completed

Viewed? [Yes](#) [No](#) [View](#)



Maritime zones and the Law of the Sea (part 2)

Building upon part one, Dr Steve Fletcher identifies the mechanism used to determine maritime boundaries, specifically looking at disputes and how these disputes that can be managed.

Video Completed

Viewed? [Yes](#) [No](#) [View](#)



Improvements in navigation

John Hooper uses this lecture to introduce you to the topic of navigation. John starts the lecture by reviewing the information needed by the navigator before examining the changes that have occurred in recent time. The lecture draws to a conclusion by investigating the impact that technological adv...

Video Completed

Viewed? [Yes](#) [No](#) [View](#)



SOLAS and the ISM Code

In this lecture, Master Mariner Paul Wright outlines the contents of the Safety of Life at Sea Convention (SOLAS). Paul also examines the objectives and implementation of SOLAS chapter IX, before he discusses the responsibilities of the ship's Master and the shipping company for develop...

Video Completed

Viewed? [Yes](#) [No](#) [View](#)



An introduction to data management

In this lecture, Dr Jaimie Cross introduces you to the concept of data before defining what data management is. Finally, Jaimie identifies what is good data and what is bad data, and how this can impact on operations.

Video Completed

Viewed? [Yes](#) [No](#) [View](#)

Coastal interaction matrix

| | Sailing | Aquaculture | Fishing | Conservation | Tidal power |
|--------------|---------|-------------|---------|--------------|-------------|
| Tidal power | | | | | |
| Conservation | | | | | |
| Fishing | | | | | |
| Aquaculture | | | | | |

Positive relationship
Neutral relationship
Negative relationship

21st Century Navigation Equipment

- Satellite communications system
- Automatic identification system (AIS)

Maritime boundaries defined by:

- Precise hydrographic survey
- Geospatial analysis
- Historical review
- Political negotiation
- Military action

Shore-based responsibilities and authority

Designated Person Ashore (DPA):

- Confirm the effectiveness of the SMS
- Report deficiencies to the highest level
- Organise safety audits

DPA will be experienced in safety and pollution control

Using and processing data

- Wise use of data as the resource which informs operational decisions

