

# 16<sup>th</sup> Meeting of the Southern African and Islands Hydrographic Commission

## MSDIWG update

Submitted by the United Kingdom of Great Britain and Northern Ireland

# Aims of this session

- Update since forming during SAIHC 15
- Re-Cap of MSDI
- Overview of known related activity in region
- The work of the IHO MSDIWG
- Training and Capacity building to support MSDI at SAIHC
- Summary of key actions from Annual MSDI report

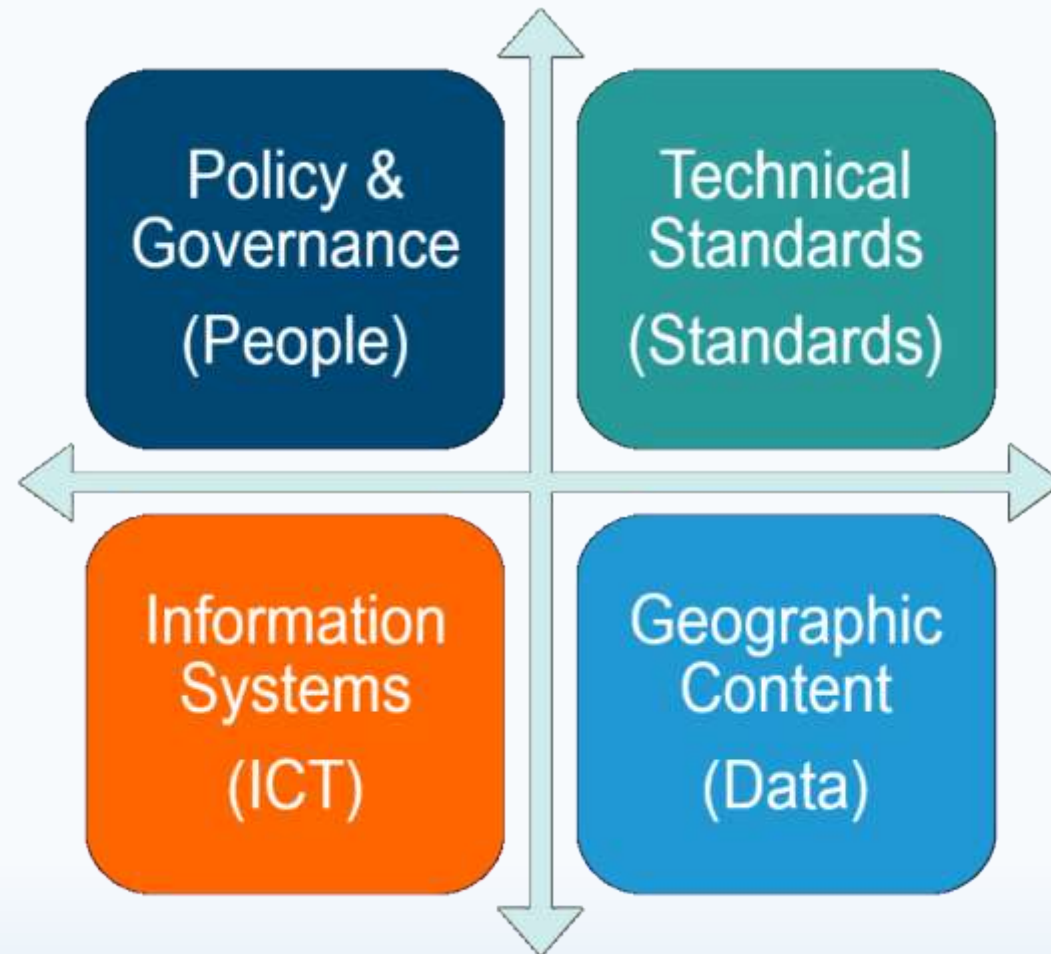
# Update since SAIHC 15

---

- SAIHC MSDI WG formed – UK Chair
- TOR/ROP developed
- Initial research into related activity in region
- Questionnaire on MSDI sent to MS
- Liaison with IHO MSDI WG Chair
- Annual report delivered for SAIHC 16

# MSDI re-cap

---

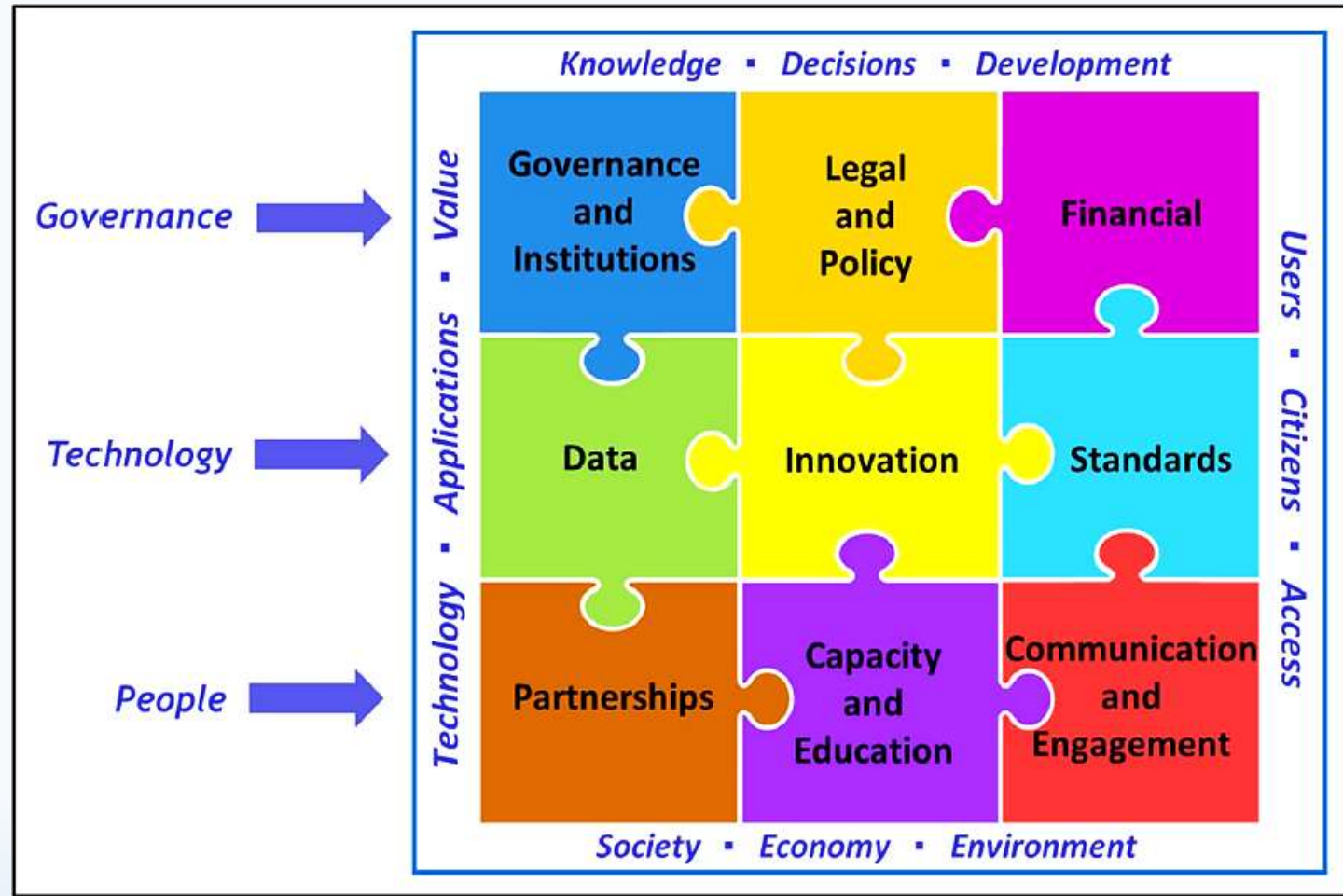


# MSDI re-cap

---



# MSDI re-cap



# Known related activity in region

---

- The Seychelles Marine Spatial Plan (MSP) Initiative <https://seymsp.com/the-initiative/>
- Marine Spatial Atlas for the Western Indian Ocean (MASPAWIO) <http://maspawio.net/>
- African Coastal and Marine Atlas (ICAN) <http://www.africanmarineatlas.org/>
- BIOPAMA
- Nairobi Convention – Marine Spatial Planning Group [https://wedocs.unep.org/bitstream/handle/20.500.11822/26353/Marine\\_Spatial\\_Planning\\_Report.pdf?sequence=1&isAllowed=y](https://wedocs.unep.org/bitstream/handle/20.500.11822/26353/Marine_Spatial_Planning_Report.pdf?sequence=1&isAllowed=y)

# IHO MSDIWG

---

- Meeting in Busan March 2019
- Key outcome to develop training material



# Training / Capacity Building

---

- Draft training material provided by IHO MSDIWG
- UK sponsored seminar
- Request for Support
- Capacity building opportunities

# SAIHC MSDI Questionnaire

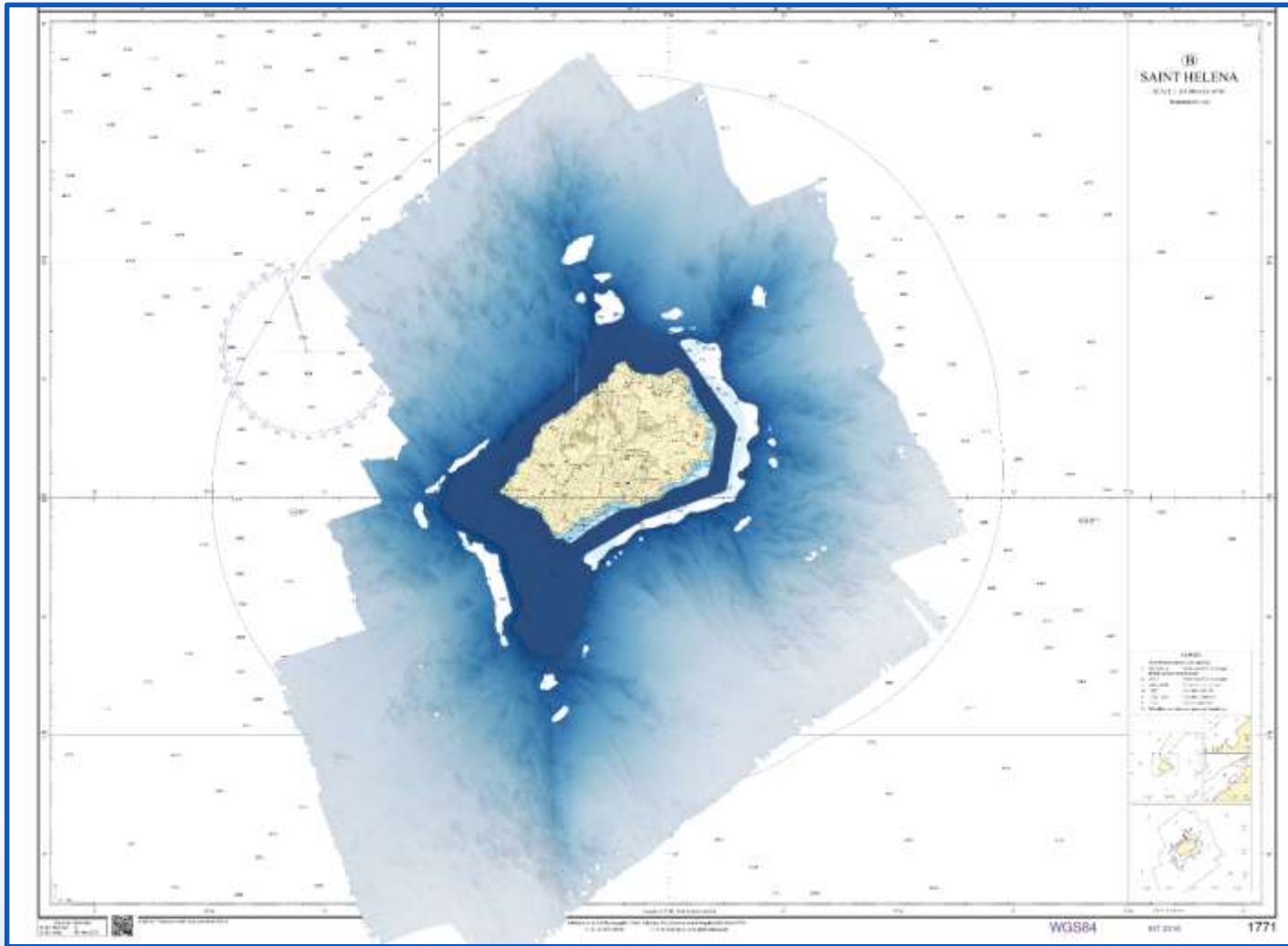
---

- 1. How does your country organize and manage marine geospatial information (e.g., spatial data infrastructure)?
- 
- 2. How are data added to or integrated with existing geospatial data, including land-based data?
- 
- 3. How can or do you share and integrate your data with other national agencies?
- 
- 4. Do you have any international, cross-agency, or non-governmental partnerships that facilitate the collection, sharing, and maintenance of data?
- 
- 5. What legal and logistical barriers do you know of or foresee in using a multilateral approach to managing and sharing data (i.e., marine spatial data infrastructure)?
- 
- 6. Are you aware of any MSDI activities undertaken within your country since SAIHC15, and if so are there any areas that can be supported through SAIHC?
- 
- 7. What data sets are potentially available to load onto an MSDI?

# Marine Portal opportunities?



# Marine Portal opportunities?



# Request for support?

---

- Does the group require support through tasking IHO MSDIWG?
- Training/support through Capacity building?
  - Delivery one week seminar on Hydrographic Governance and Data Management

# Key actions of SAIHC MSDIWG annual report

---

- SAIHC next steps will be developed after feedback to the questionnaire is received and analysed.
- Actions: SAIHC 16 is invite to:
  - Note the annual MSDI report;
  - Consider and respond to questionnaire in SAIHC MSDI letter No. 1/2019 dated 17<sup>th</sup> July 2019;
  - Consider Capacity Building and tasking requirements to put to the relevant IHO bodies.

# Questions/feedback

---

- Questions.