



Fisheries and Oceans
Canada

Pêches et Océans
Canada



Canadian Hydrographic Service

CHS Progress on Phase 1 of World Class Tanker Safety System

David Prince
Director, CHS Pacific

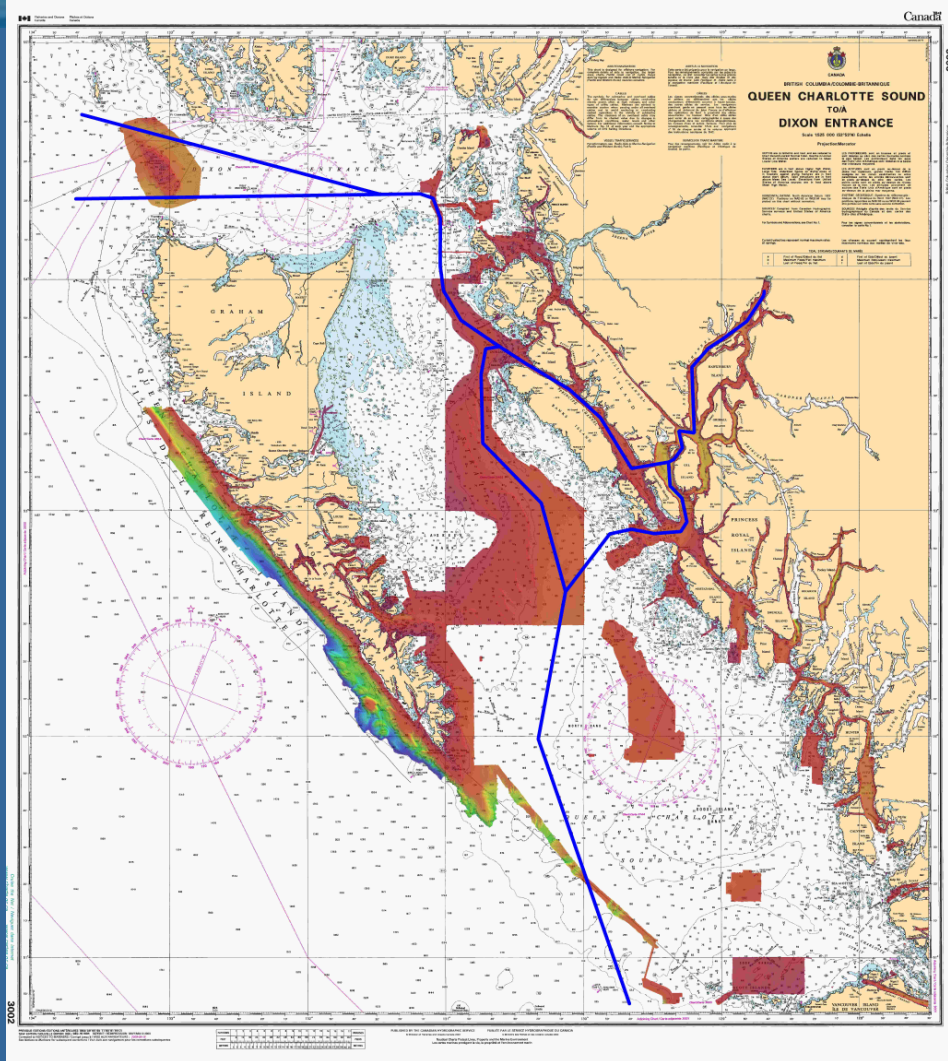
March 2015



Surveys

Area of survey coverage

- Routes shown in Blue
- Multibeam surveys completed in coloured shades

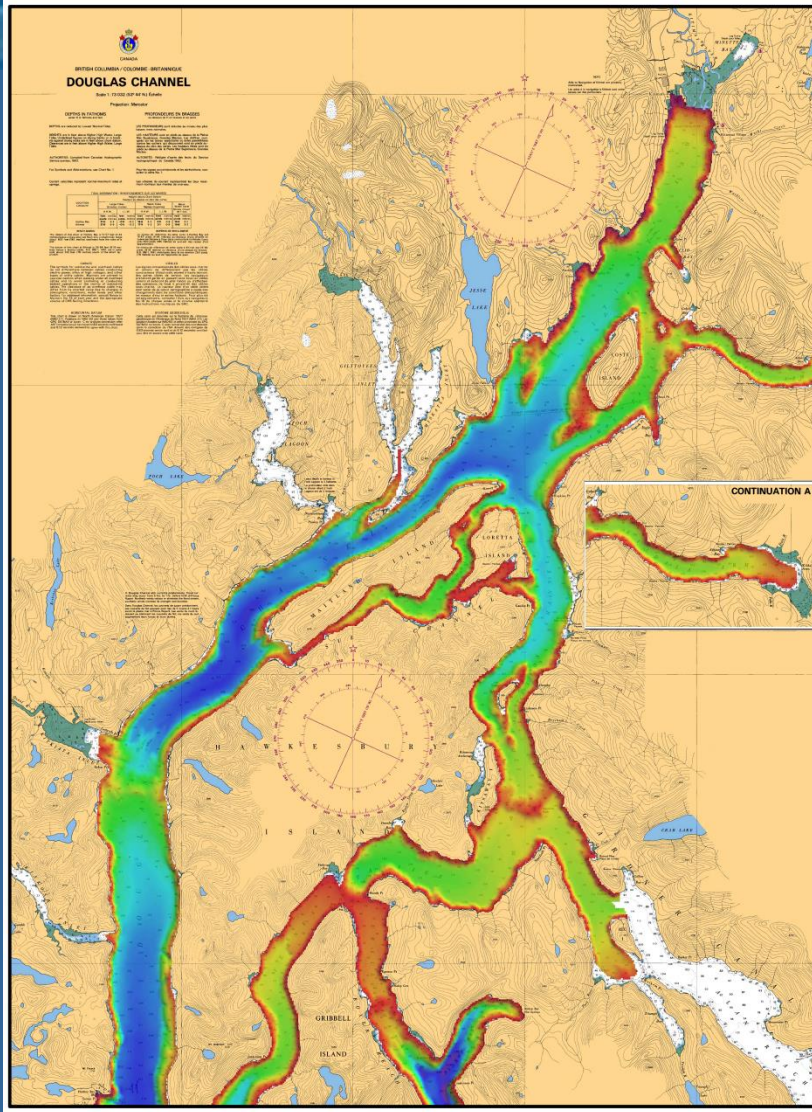




Surveys

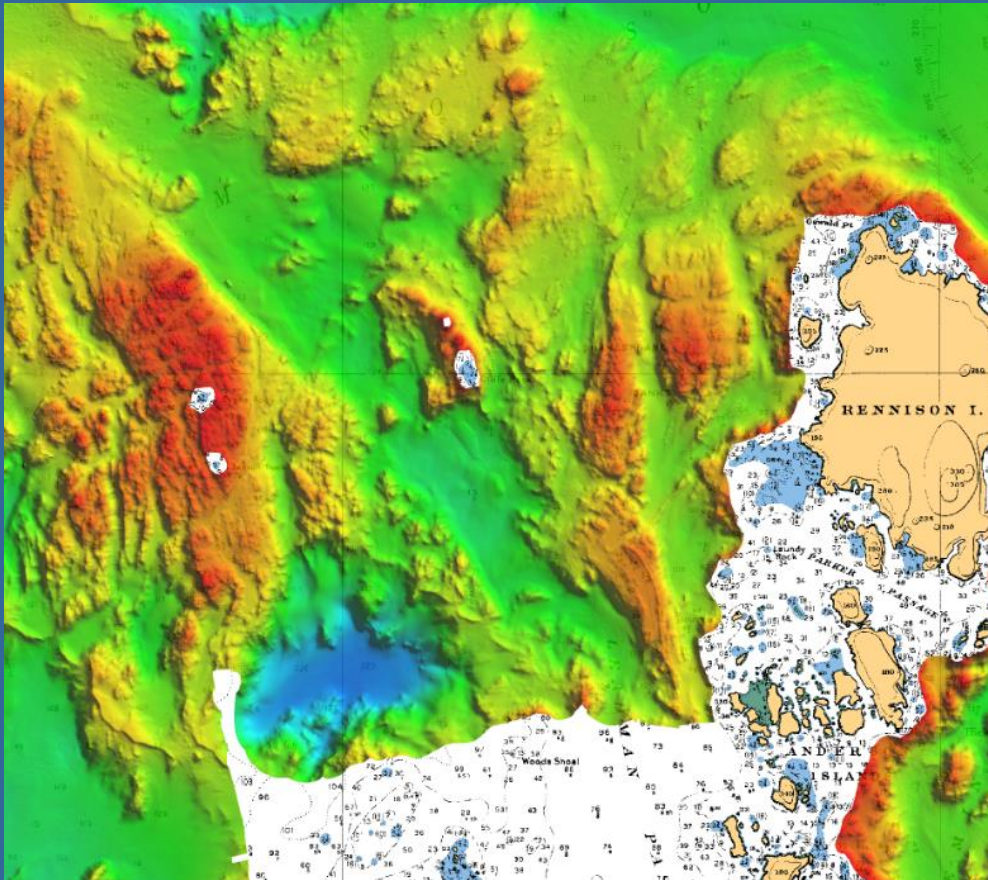
Routes through Douglas Channel

- Multibeam coverage in areas deeper than 20 metres





High Definition Bathymetry



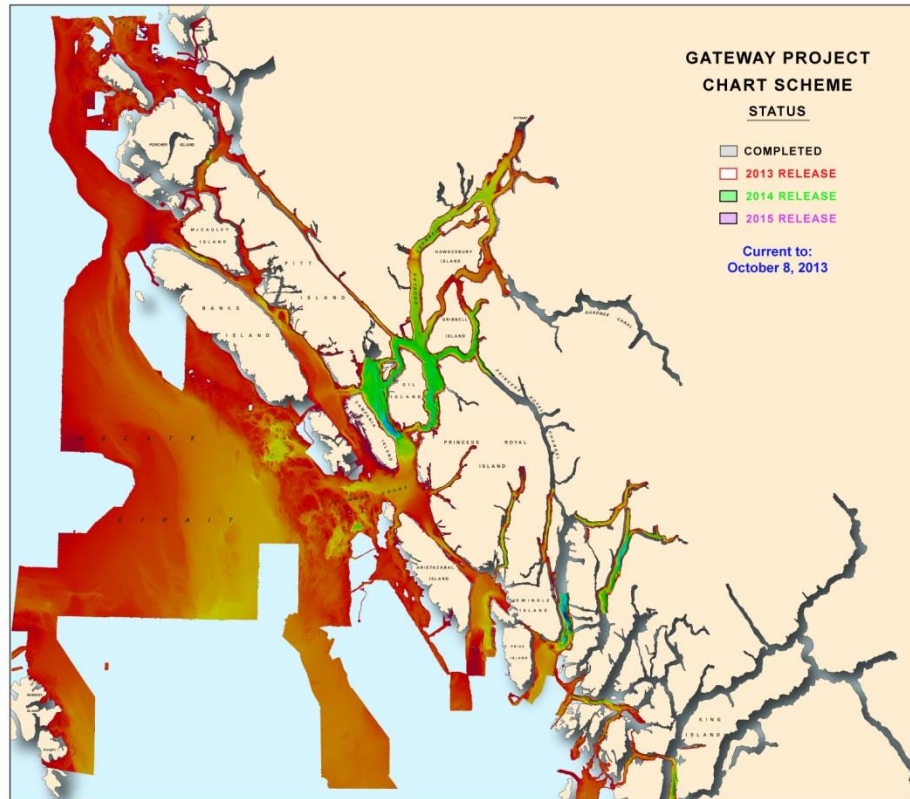
2014 Survey Coverage

- Vector – 1720 square kms
- Otter Bay – 100 square kms
- Shoal Seeker – 32 square kms





Approaches to Kitimat

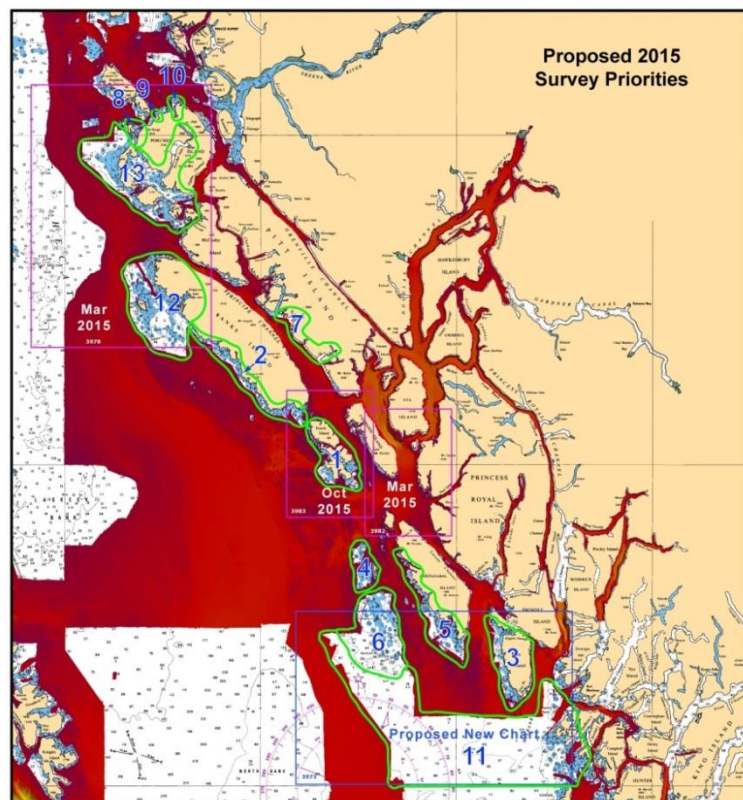


New Multi Beam Surveys

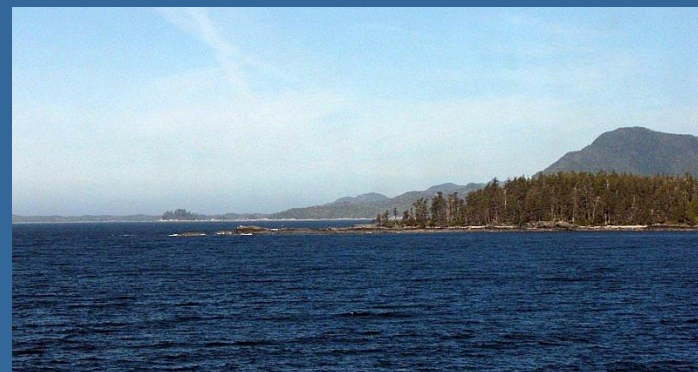
- Work completed to 2014
- More work planned for 2015



2015 Survey Priorities

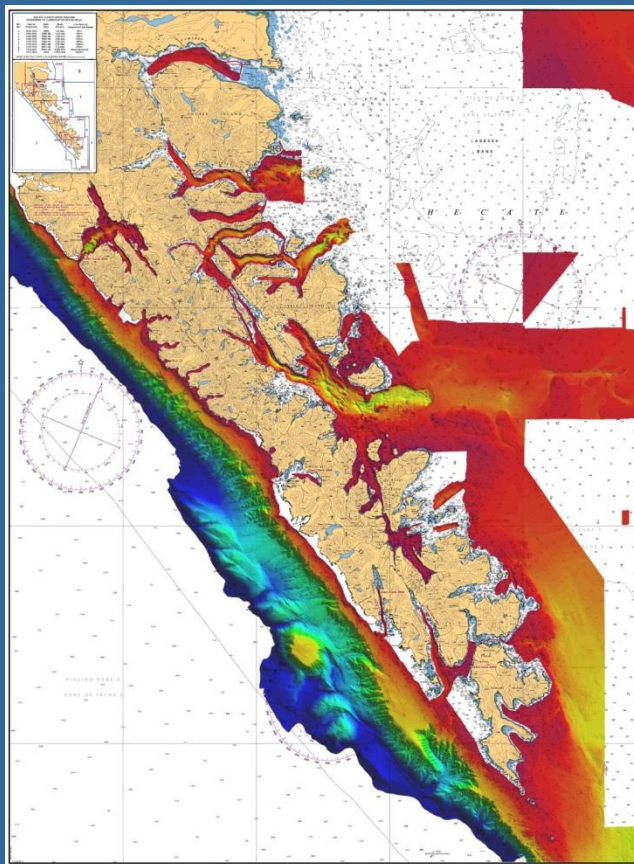


New Multi Beam
Surveys for 2015
prioritized by area





Areas to be surveyed



New Multi Beam Surveys for 2015

- Near shore of Gwaii Haanas National Park Reserve





Survey Vessels

Multibeam surveys in critical navigational channels



Vector



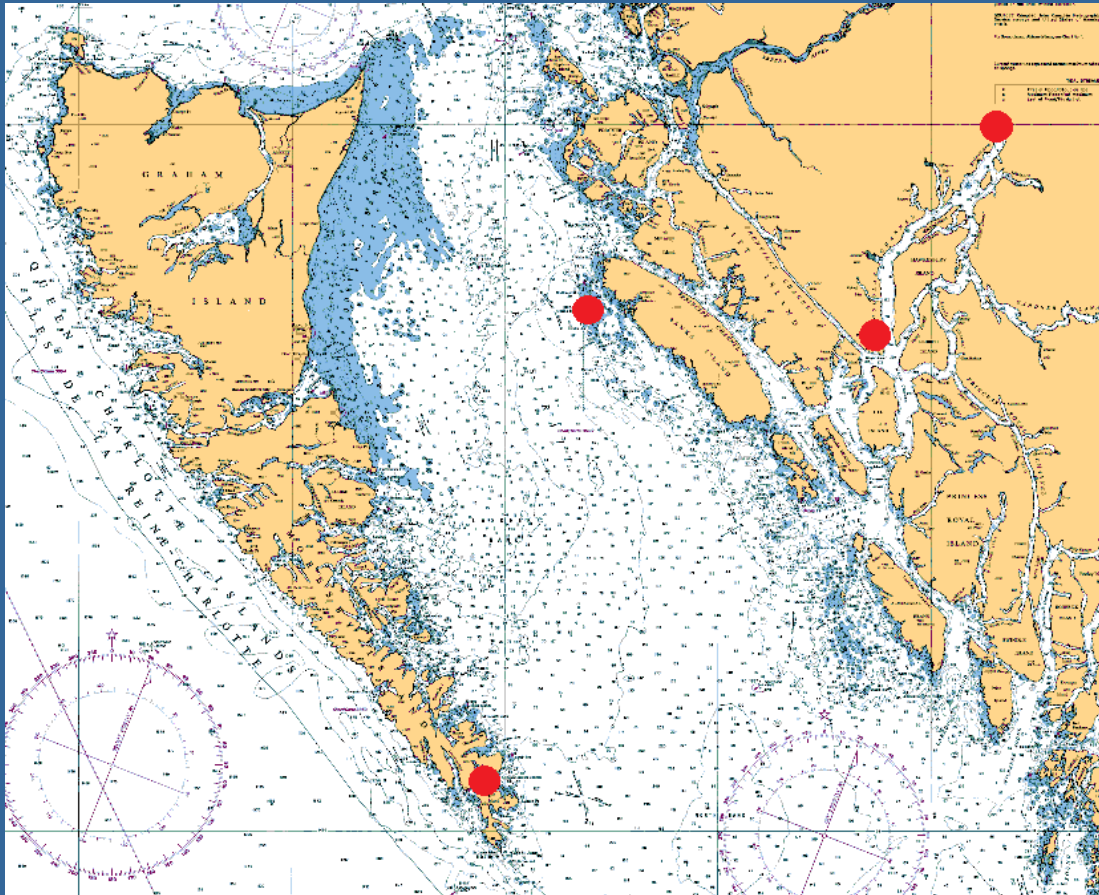
Otter Bay



Shoal Seeker



Tidal Surveys



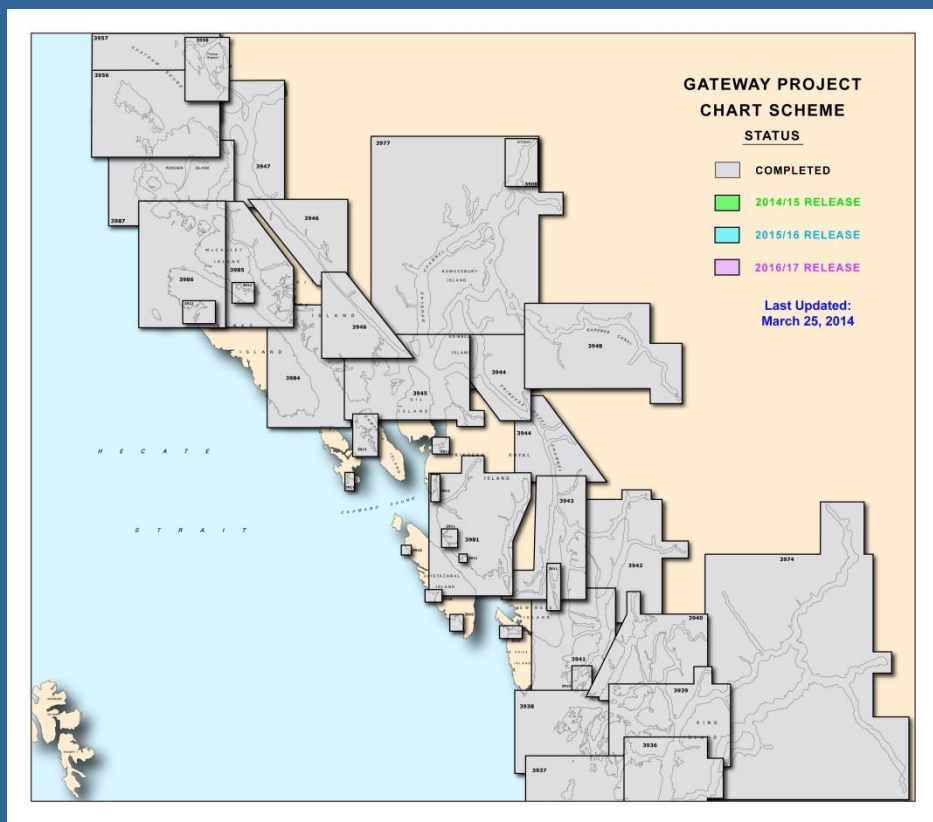
Tide Gauges located at:

- Kitimat
- Hartley Bay
- Rose Harbour
- Bonilla Island

Data used for
development of tidal
predictions and aid in
current modeling



Approaches to Kitimat



New Charts completed to date

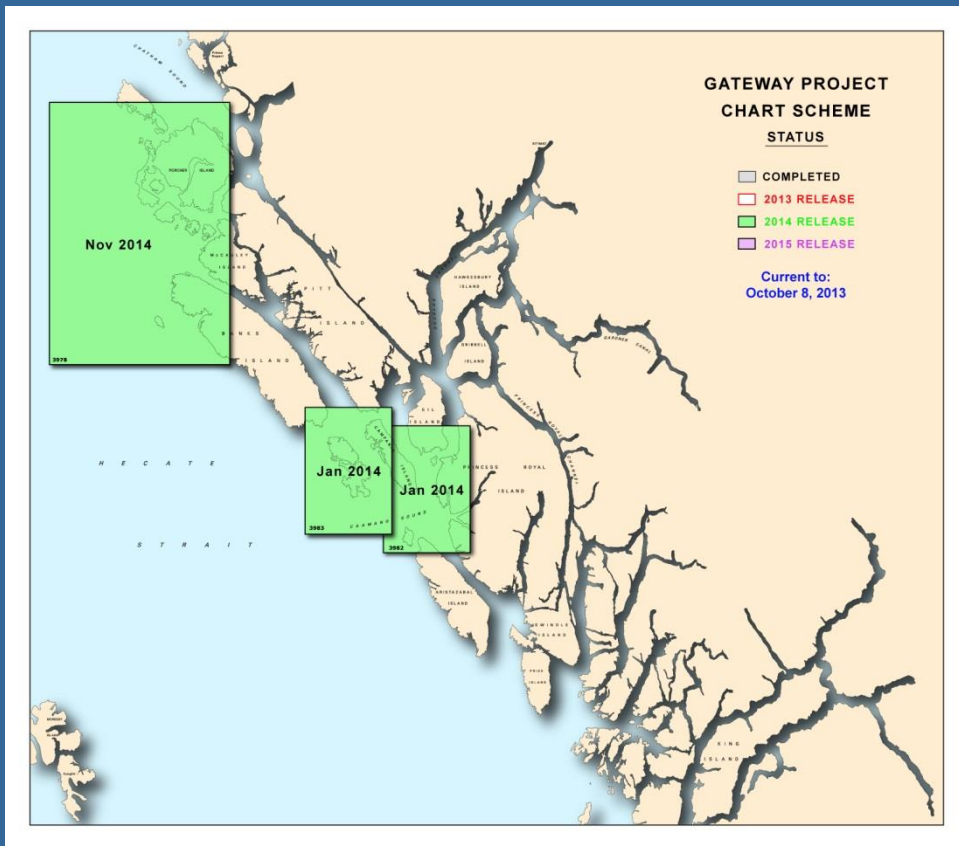
- 19 of the 25 new charts are released

All to modern standards

- NAD 83
- Metric
- Bilingual



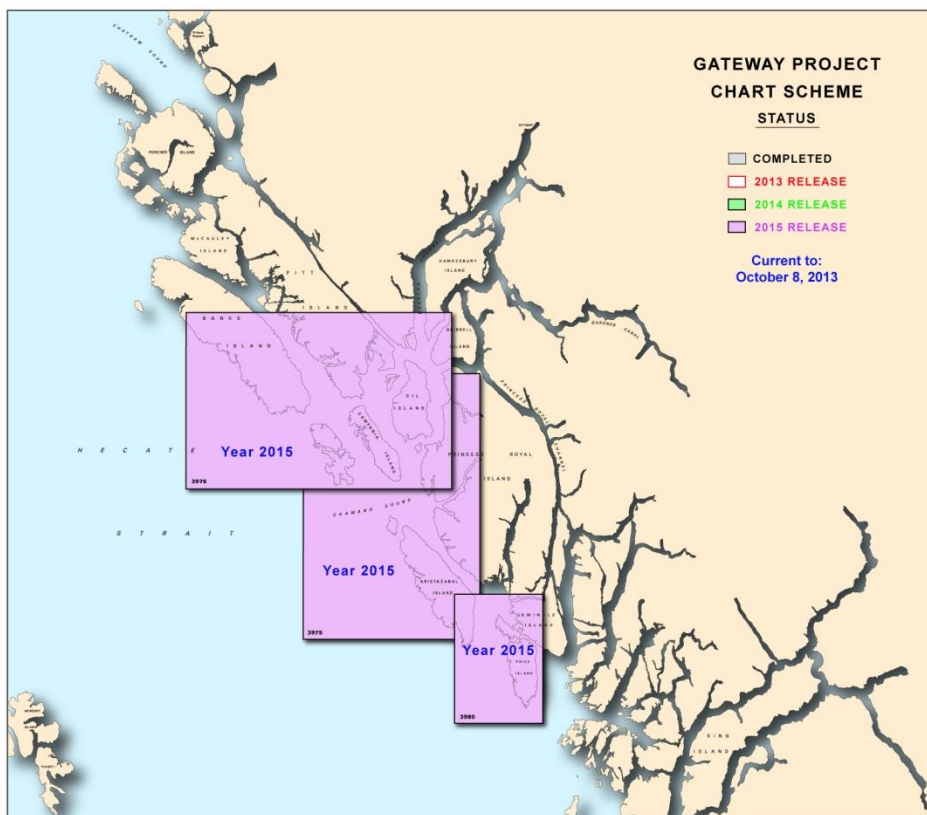
Approaches to Kitimat



New Charts to be
completed in
2014/15



Approaches to Kitimat



New Charts to be
completed in
2015/16



Fisheries and Oceans
Canada

Pêches et Océans
Canada



Questions?