

The impact of the seabed roughness on the location of the 2,500 m isobath and the foot of the continental slope

Galo Carrera

Overview

- Case: Hudson Canyon, West-Atlantic continental margin
- The problem: seabed roughness
- The 2,500 m isobath and the foot of the slope
- Solution attempts:
 - 1 Decimation
 - 2 Non-linear filtering
 - 3 Linear filtering
 - 4 Wiener adaptive filtering
 - 5 Wavelet decomposition
- Recommendations

Bathymetric Data of the Hudson Canyon Region

- **US NGDC Coastal Relief Model**

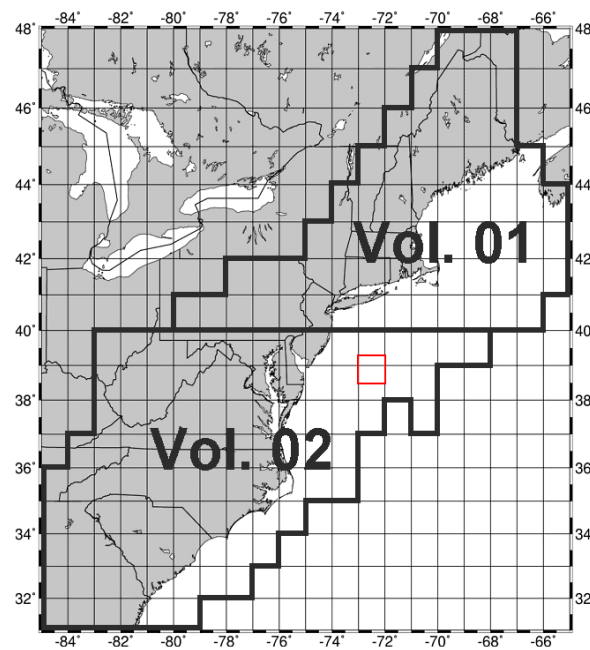
3" x 3" 6" x 6" 15" x 15"
30" x 30" 60" x 60"

- **Predicted Bathymetry: 2' x 2'**

- **GEBCO97: 2,000 m and 2,500 m isobaths**

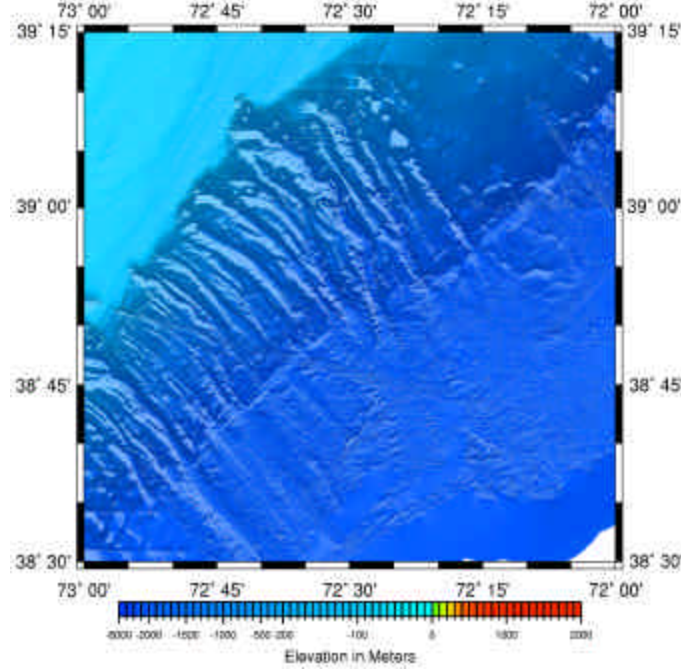
- **ETOPO5: 5' x 5'**

US NGDC Coastal Relief Model Information



US NGDC Digital Model: Hudson Canyon Region

5

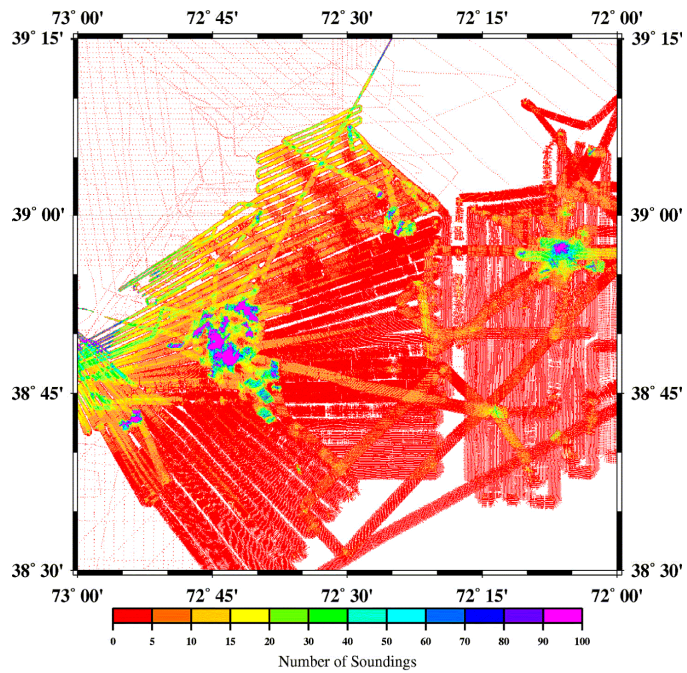


The impact of seabed roughness on the location of the 2,500 m isobath and the foot of the continental slope by G. Carrera

ABLOS International Conference, IHB, Monaco
8 September 1999

US NGDC Sounding Data: Hudson Canyon Region

6

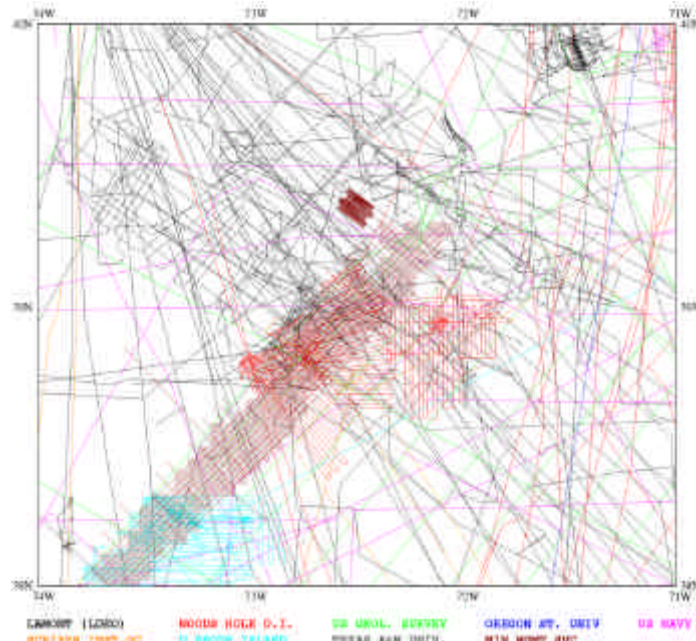


The impact of seabed roughness on the location of the 2,500 m isobath and the foot of the continental slope by G. Carrera

ABLOS International Conference, IHB, Monaco
8 September 1999

US NGDC Sounding Information Sources

7

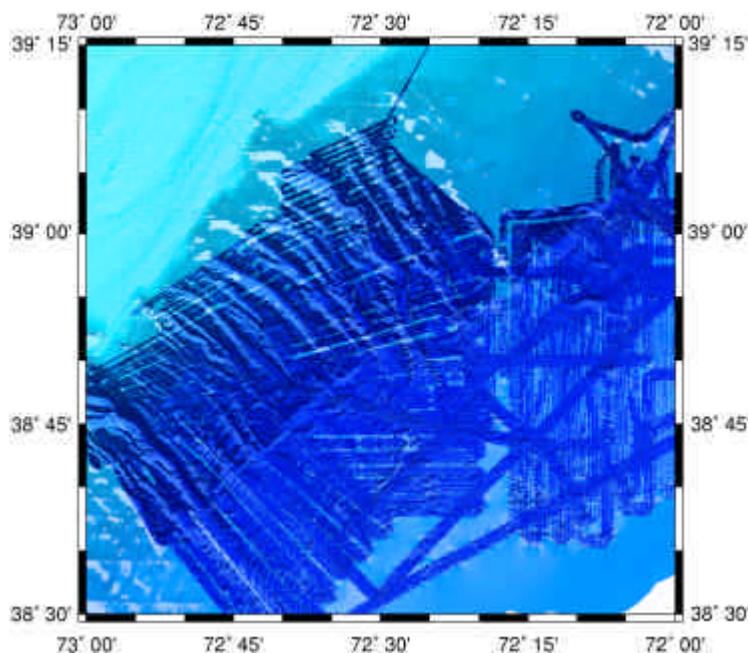


The impact of seabed roughness on the location of the 2,500 m isobath and the foot of the continental slope by G. Carrera

ABLOS International Conference, IHB, Monaco
8 September 1999

US NGDC Sounding Information Overlay

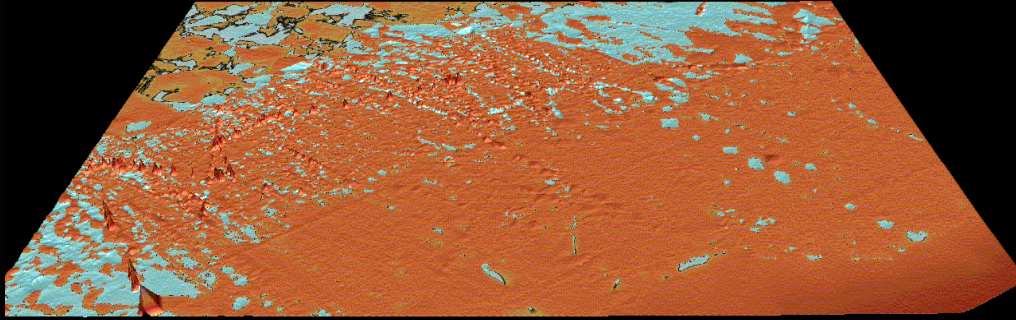
8



The impact of seabed roughness on the location of the 2,500 m isobath and the foot of the continental slope by G. Carrera

ABLOS International Conference, IHB, Monaco
8 September 1999

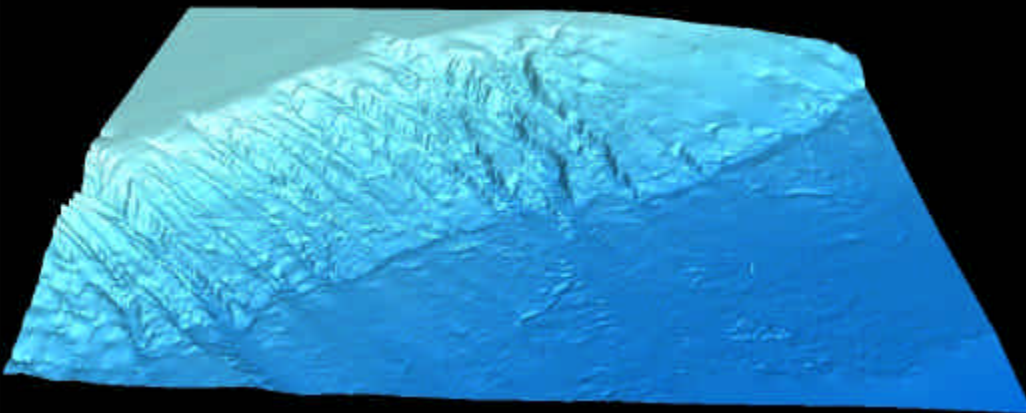
GEODAS sounding data minus US NGDC Model



The impact of seabed roughness on the location of the 2,500 m isobath and the foot of the continental slope by G. Carrera

ABLOS International Conference, IHB, Monaco
8 September 1999

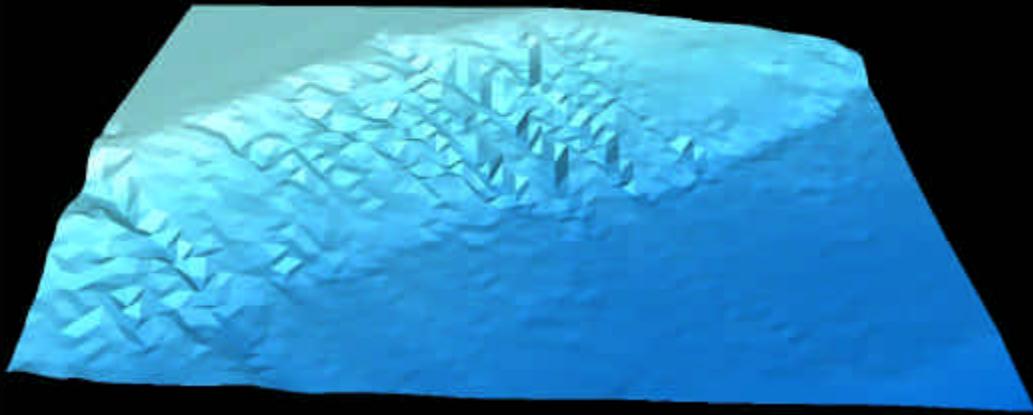
Digital Model of Hudson Canyon: 3" x 3"



The impact of seabed roughness on the location of the 2,500 m isobath and the foot of the continental slope by G. Carrera

ABLOS International Conference, IHB, Monaco
8 September 1999

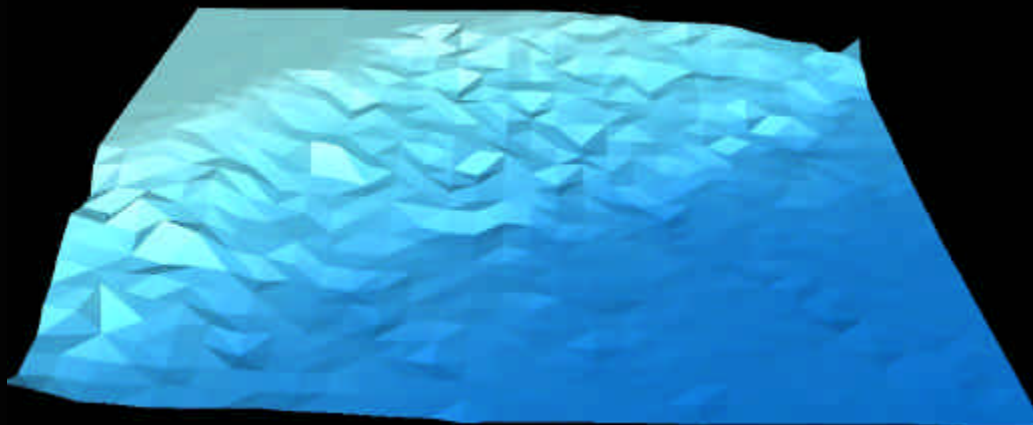
Digital Model of Hudson Canyon: 1' x 1'



The impact of seabed roughness on the location of the 2,500 m isobath and the foot of the continental slope by G. Carrera

ABLOS International Conference, IHB, Monaco
8 September 1999

Predicted Model of Hudson Canyon: 2' x 2'



The impact of seabed roughness on the location of the 2,500 m isobath and the foot of the continental slope by G. Carrera

ABLOS International Conference, IHB, Monaco
8 September 1999