



# International Hydrographic Organization



**CBSC13**  
**(CBSC13-07.3)**

**Management System Development**

**IHB**



# Summary

- Introduction
- CB Management System
- Challenges
- Future developments



# Introduction

The CB history is recent and continues to evolve:

- 2003: CBSC established
- 2004: CB Fund created
- 2006: CB Strategy
- ....
- 2014: ToR for CB Coordinators
- 2014: Revised IHO CB Strategy



# CB Management System

What is it?



# CB Management System

The framework of the CB Management is set by means of CB Procedures



# CB Management System

# CB Procedures:

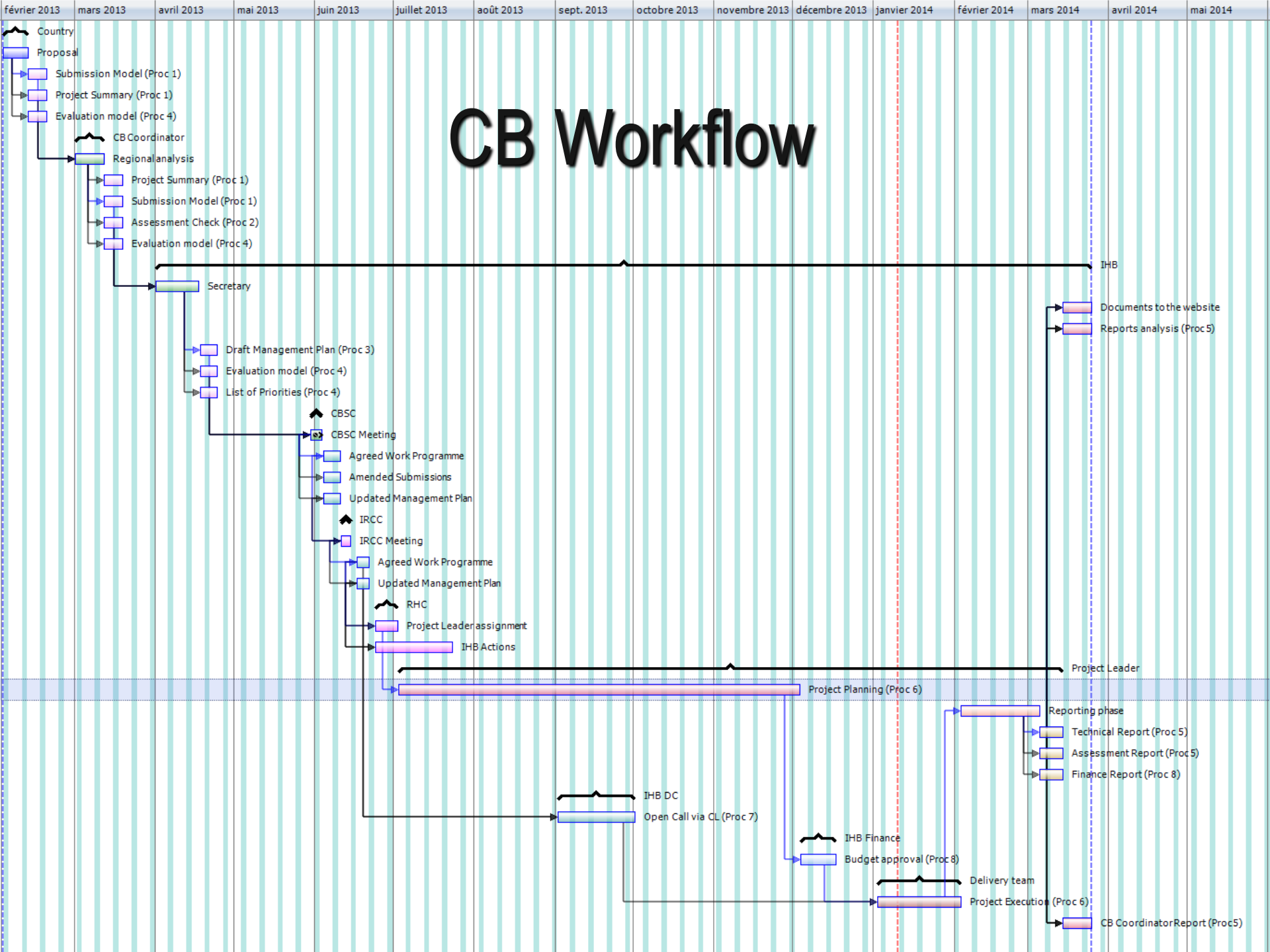
1. Request of support to the CBSC
2. Verification by the RHCs before submitting
3. Review by the CBSC Secretary
4. Evaluation (priority definition)
5. Performance assessment



# CB Management System

## CB Procedures (cont.):

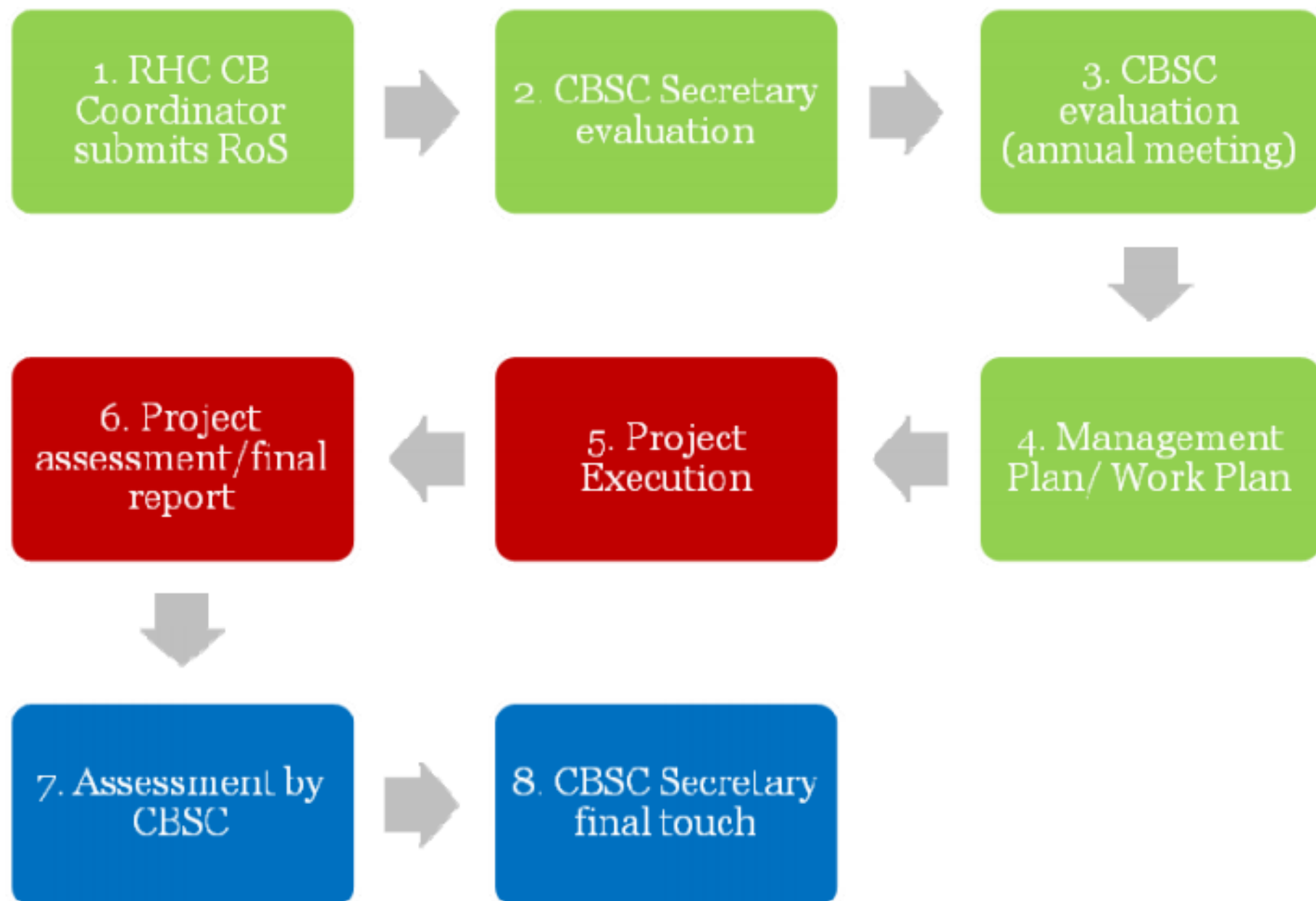
6. Project execution
7. Application procedure
8. Finance management
9. Technical visits (in development)





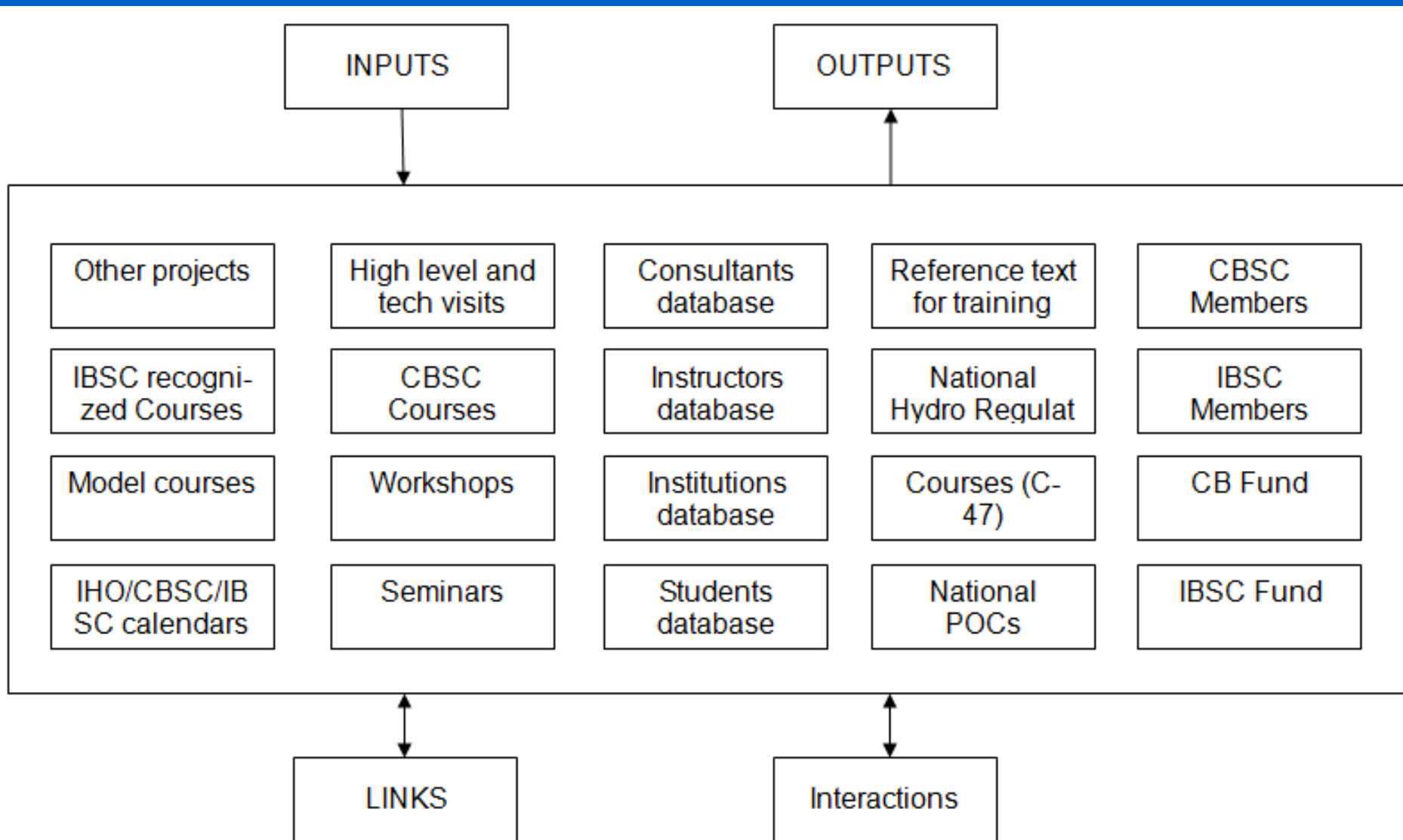
## CBSC database specification

---





# Management System





# Management System

## INPUTS:

Proc 1: RoS submission  
Proc 5: Report assessment  
Proc 6: Project execution  
Proc 7: Course Candidate Submission  
Proc 8: Project Finance Report  
Secretary updates  
IHO 5-y WP  
IHO annual WP

## INTERACTIONS:

Proc 2: RHC Analysis of RoS  
Proc 3 and 4: Secretary Analysis of RoS  
Proc 5: CBSC Analysis

## LINKS:

MS Database  
GIS System  
C-55



# Management System

## OUTPUTS:

Annual Report to CBSC  
Annual Report to IRCC  
CBSC Fund Balance and Report  
IBSC Fund Balance and Report  
Performance Indicators  
Risk Management  
Proc. 5: RoS Monitoring  
Draft Management Plan  
CB Agreed Work Programme  
CB Adjusted Work Programme  
CBSC Calendar  
IBSC Calendar  
IHO Publication C-6  
IHO Publication C-47  
IBSC List of Recognized Courses  
Search engine



# CB Management System

What is it?

A comprehensive system to manage the IHO CB activities aligned with the IHO Strategy and the CB Strategy



# CB Management System

How to do it?

- Data integration and sharing
- Access to Member States
- Fit for purpose



# CB Management System

## Challenges?

- Lack of resources
- Low awareness
- Not COTS
- Lack of a country profile



# CB Management System

## Challenges (cont.)?

- Regional particularities
- Individual nuances
- Financial differences
- Lack of GIS capabilidade





# CB Management System

## Challenges (cont.)?

- Lack of standard inputs
- Students follow up
- Assessment is difficult
- Increasing complexity of needs



# CB Management System

## Challenges (cont.)?

- How to manage intangible assets?
- Performance monitoring complex
- Joint CB activities (IMO, IALA...)



# Future developments

- Online submission and reporting
- Dynamic website
- Country profile – Future C-55
- GIS and CIS integrated
- Improve/review the Procedures
- Validate the Databases



## Future developments (cont.)

- Performance monitoring and indicators, and statistics
- Model courses
- Integration of components (financial, databases, publications, etc.)



# International Hydrographic Organization



Questions?