

**17<sup>th</sup> MEETING OF THE IHO CAPACITY BUILDING SUB-COMMITTEE**  
**IHO-CBSC17**  
**Genoa, Italy, 29-31 May 2019**

**Paper for the Consideration by CBSC17**

**SWPHC Report**

<b>Submitted by:</b>	SWPHC CB Coordinator
<b>Executive Summary:</b>	This document provides a summary report of the CB activities at SWPHC
<b>Related Documents:</b>	SWPHC CB Plan 2019-2021
<b>Related Projects:</b>	NZ (PRNI & PMSP) Pacific Community (SPC) Pacific Safety of Navigation project

### 1. Introduction / Background

Pacific Island Countries and Territories (PICTs) are geographically remote and fragmented; they face a major development challenge in achieving safe, reliable, and efficient connectivity within the region and with the rest of the world. The maritime sector plays a key role in supporting economic growth and development in PICTs by facilitating trade and commerce and by improving people's ability to travel for health, education, employment, and to interact with other communities.

### 2. Assessment of Capacity Building Phase Stage of Coastal States

The table in the **Annex A** provides an assessment of Capacity Building for the Pacific Islands and Territories in the region, in accordance with the CB Procedure 11. The table in **Annex B** provides a detailed breakdown of the status of SWP Coastal States with respect to the phases of the IHO CB Strategy.


### 3 Activities completed since CBSC16

#### 3.1 **CBWP P-11 (MSI Training Course)**

The training course was held in Wellington, New Zealand on 6-8 August 2018. The course provided MSI training to representatives from 13 SWPHC coastal States. The workshop was hosted by LINZ and Maritime New Zealand (NAVAREA XIV Coordinator) with additional instructors from AMSA (NAVAREA X Coordinator) and Fiji Maritime Safety Authority (MSAF). **The inclusion of Mr Sunil KUMAR – MSAF, is a direct response to the IHO goal to build capacity by appointing MSI trainers from the region.**

A Charting Authority familiarization workshop, facilitated by LINZ, was held on Thursday 9th August following completion of the MSI course.

#### 3.1 **CBWP P-12 (Technical Workshop on Disaster Response Planning & Data Discovery)**

The workshop was held in Niue on 13-12 February 2019 in conjunction with SWPHC16. It was led by Land Information New Zealand (LINZ), with presenters from Australia, Fiji, France, Indonesia, New Zealand, Samoa, United Kingdom, United States of America, IHO, IALA and SPC. The workshop was attended by **50 participants** from Australia, Cook Islands, Fiji, France, Indonesia, Kiribati, Marshal Islands, Nauru, New Zealand, Niue, Palau, Papua New Guinea, Samoa, Solomon Islands, Tokelau, Tonga, Tuvalu, United Kingdom, United States of America, Vanuatu, IALA, IHO Secretariat, GEBCO, SPC, EOMAP and IIC Technologies. 

**The objectives of the workshop were to:**

- further develop the disaster response plan first drafted by the SWPHC in 2016 following the aftermath of Cyclone Winston, in Fiji. The Plan aims at preparing the SWPHC to respond to disasters in accordance with the IHO Resolution 1/2005; and
- identify existing data available from web-based data portals and endeavour to instigate access to such datasets.

### 3.2 MFAT New Zealand Aid Programme - Pacific Regional Navigation Initiative (PRNI)

**Bilateral Arrangements:** A bilateral arrangement between the Government of Tonga (Ministry of Infrastructure – Marine and Ports Division) and New Zealand (Land Information New Zealand) was signed in January 2019. Signed bilateral arrangements are also in place with the Cook Islands, Niue and Samoa.

**Mitigation Measures:** Twenty-two ENC's and 9 paper charts for the Cook Islands, Niue, Tokelau and Tonga have been published since November 2018 incorporating Satellite Derived Bathymetry and third-party data, including data from UK's Commonwealth Marine Economies survey in Tonga.

Further chart updates for Niue and Tonga are scheduled for publication June 2020, incorporating ALB and MBES data.

Following the extensive programme of Satellite Derived Bathymetry for the Cook Islands, Niue, Tokelau and Tonga, an Airborne Laser Bathymetry (ALB) survey commenced June 2018 in Niue and Tonga. This was followed by a MBES survey in Tonga using an Unmanned Surfaced Vessel. The survey was completed in December 2018. All data was delivered to LINZ at the end of April 2019.

Under the PRNI project, the Pacific Community (SPC) has established and provided a chart updating resource package and training to the MSI coordinators and AtoN personnel of three targeted countries: Vanuatu, Kiribati and Tuvalu. These three countries are now using this package to send hydrographic Notes (H-Notes) to Principal Charting Authorities (PCA).

Over 2016-2018, there were a total of 58 H-Notes drafted and sent to the PCAs for charting updates and some urgent ones to the NAVAREA coordinators for the promulgation of the related MSI.

Beyond the agreed project objectives and activities, SPC delivered a one-day training session on the promulgation of MSI to the National MSI Coordinators and AtoN personnel in Samoa and Niue, assisting the countries build their capacity in drafting and sending H-notes to PCAs and to all mariners.

### 3.3 MFAT New Zealand Aid Programme – Pacific Maritime Safety Programme (PMSP)

The PSMP aims to provide a range of targeted maritime safety initiatives to seven PICs (Cook Islands, Niue, Kiribati, Samoa, Tokelau, Tonga and Tuvalu), and covers a wide range of capability building activities in the maritime domain, including for maritime regulation and compliance, search and rescue, and marine pollution response.

### 3.4 UK Commonwealth Marine Economies (CME) Programme

A hydrographic survey of critical navigation areas and marine habitats in the approaches to Nuku'alofa, Tonga was conducted as part of the United Kingdom's CME Programme. The data will be used for science & marine habitat mapping, nautical charting and capacity building activities. LINZ received the data in August 2018 for NE charts, published in February 2019..

### 3.5 IHO - Nippon Foundation CHART Project Category B course

Mr Heru KURNIAWAN from Indonesia attended the 10th Course in Marine Cartography and Data Assessment - Sep-Dec 2018.

### 3.6 Tonga Navy representative attending USM Joint International Hydrographic Applied Science Program

Navy Commander Holokaukau Lakai of His Majesty's Armed Forces is attending the USM 42 week Category "A" Hydrographic Surveyor programme in the USA. This is due to be completed July 2019.

### 3.7 Pacific Community (SPC) Pacific Safety of Navigation project

**The Pacific Safety of Navigation project started in 2016 with the support of the International Foundation for Aids to Navigation (IFAN) in 13 PICTs aiming at improving AtoN capacity and systems and the safety of maritime routes in the Pacific. SPC is currently in the second phase of the project (2018-2021).**

ACTIVITY	ACHIEVEMENT
<i>Safety of Navigation Project Phase 1 (August 2016 – July 2018) – update May - June 2018</i>	
<ul style="list-style-type: none"> <li>• During the project Phase 1, the Simplified the International Association of Marine Aids to Navigation and Lighthouse Authorities (IALA) Risk Assessment (SIRA) was developed and piloted in Kiribati in collaboration with IALA for the use in small island developing states</li> <li>• A regional workshop on Phase 1 findings and phase 2 activities was organized by SPC in June 2018 and attended by representatives from Cook Islands, Kiribati, Marshall Islands, Palau, Federated States of Micronesia, Samoa, Tonga, Niue, Nauru, Solomon Islands, Tuvalu, Vanuatu and observers from LINZ, United States and IALA World Wide Academy</li> <li>• A regional training on SIRA and on AtoN budgetary management was delivered by IALA in June 2018 to representatives from Cook Islands, Kiribati, Marshall Islands, Palau, Federated States of Micronesia, Samoa, Tonga, Niue, Nauru, Solomon Islands, Tuvalu, Vanuatu and Fiji</li> </ul>	
ACTIVITY	ACHIEVEMENT
<i>Safety of Navigation Project Phase 2 (August 2018 – July 2021) – update July 2018 - March 2019</i>	
Aton Risk Assessment using SIRA tool	6 out of 13 countries visited Delivered AtoN Risk Assessment in 6 countries including identification and evaluation of risk, technical measures, costs and 5-year budget plan
IALA compliant AtoN Register	Assisted 6 of 13 countries to prepare fully or partially IALA compliant AtoN Register
5-year AtoN investment and budget master plan	Developed a 5-year AtoN investment and budget master plan for 5 of 13 targeted countries

Where appropriate, PRNI will contribute to Phase 2 of the Safety of Navigation Project, enabling PICs achieve Phase 1 of IHO CB Strategy. SPC and LINZ recognise the need to coordinate CB activities in the region to avoid duplication.

#### 4. Activities planned for 2019

- 4.1 CBWP A-01 (Technical Implementation Visit – Samoa)  
Planned for Q4 2019 (LINZ lead). A follow-up of the 2016 Technical Assessment & Advice Visit and the 2017 Hydrographic Risk Assessment. The visit is to ensure that Samoa fulfils its SOLAS V obligations (V/4 & V/9), by providing support to implement the recommendations of the technical visit.
- 4.2 CBWP A-02 (Technical Implementation Visit – Niue)  
Planned for June 2019 (LINZ lead). A follow-up of the 2016 Technical Assessment & Advice Visit and Hydrographic Risk Assessment. The visit is to ensure that Niue fulfils its SOLAS V obligations (V/4 & V/9), by providing support to implement the recommendations of the technical visit.
- 4.3 CBWP A-03 (Technical Assessment & Advice Visit – Palau & Marshall Is)  
Planned for August 2019 (NGA lead). This Technical Visit will provide an opportunity to build Palau's awareness and understanding of their hydrographic responsibilities to fulfil its SOLAS V obligations (V/4 & V/9).
- 4.4 CBWP P-12 (Technical Workshop on Disaster Response planning & Data Discovery)  
See item 3.1 above.
- 4.5 MFAT New Zealand Aid Programme - Pacific Regional Navigation Initiative (PRNI)  
The SDB, ALB and MBES data will be incorporated on to the charts for Niue and Tonga, resulting in a new paper chart and a new ENC for Niue covering Beveridge Reef; and five new paper charts and six new ENCs for Tonga. Two of the new charts for Tonga will replace three fathoms charts. In total, 63 ENCs will be produced, including 19 new ENCs.
- MBES survey activities are planned for Samoa mid-2019.
- 4.6 Pacific Community (SPC) Pacific Safety of Navigation project

ACTIVITY	ACHIEVEMENTS PLANNED
<i>Safety of Navigation Project Phase 2 (August 2018 – July 2021) – Activities planned May 2019 – May 2020</i>	
Aton Risk Assessment using SIRA tool	11 out of 13 countries visited AtoN Risk Assessment in 5 more countries including identification and evaluation of risk, technical measures, costs and 5-year budget plan undertaken
	In 3 out of 13 countries AtoN Risk Assessments using SIRA tool conducted for a further identified area
IALA compliant AtoN Register	11 of 13 countries developed fully or partially IALA compliant AtoN Register
5-year AtoN investment and budget master plan	11 of 13 countries developed a 5-year AtoN investment and budget master plan
Capacity Building	An IALA AtoN Manager Level 1 Training course is delivered in the Pacific region

## 5. Challenges faced in the region

- Large geographical extent of SWPHC region
  - Cost of travel is high, opportunities for meetings limited.
- Capacity of the Capacity Builders.
  - More, potentially too much, is being asked of the RHC Office holders; which then impacts delivery of their own HO and RHC based activities
- Engagement of coastal states
  - Coastal states are presented with numerous CB and development activities and programmes which can impact their ability to be able to engage meaningfully.
- Awareness, coordination and collaboration between CB/development activities in the region
  - Numerous CB and development activities/programmes are being planned or delivered in the region at any one time.

## 6. Achievements and lessons learned

There has been considerable progress in CB activities in the region since CBSC16.

- Vanuatu attended an IALA Level 1 AtoN Managers course.
- Australia, RAN Hydrographic School provided hydrographic training (H2 Category B programme) attended by students from Pakistan, Malaysia and New Zealand.
- Papua New Guinea personnel attended hydrographic training (Category A course) funded by JICA (Jul-Dec 2018); received on-board training with Fugro (Sep-Oct 2018) and completed tides and SBES modules of the Fugro Academy Online.
- New Zealand has made substantial progress in the Pacific Regional Navigation Initiative (PRNI) programme of work. SDB, ALB and MBES surveys undertaken in the Cook Islands, Niue, Tokelau and Tonga. To-date 45 ENC's and 24 paper charts have been published.
- New Zealand (NAVAREA XIV Coordinator) lead the IHO funded 3-day MSI workshop in August 2018, attended by 13 PICs. The inclusion of Mr Sunil KUMAR – MSAF as a member of the delivery team is a direct response to the IHO goal to build capacity by appointing MSI trainers from the region.
- Marshall Islands attended the IHO funded 3-day MSI workshop for the first time.
- Tokelau has received significant infrastructure investment including new wharves and an inter-island ferry. SPC conducted an AtoN assessment under the Pacific Safety of Navigation programme.
- Kiribati has appointed a new Hydrographer.
- Nauru participated in a Technical Assessment Visit delivered by the UKHO; a SPC AtoN technical assessment and Pacific Safety of Navigation workshop.

- United Kingdom is making progress under its CME Programme for providing surveys, charting and capacity building in the region, with the ultimate goal to promote economic growth and prosperity.
- Pacific Community (SPC) – GeoScience, Energy and Maritime (GEM) Division - Oceans and Maritime Programme is contributing through its International Foundation for Aids to Navigation (IFAN) – funded Pacific Safety of Navigation programme and the NZ MFAT PRNI Phase II, within the framework of the Regional Strategy on Safety of Navigation, endorsed by the Third Pacific Regional Energy and Transport Ministers' Meeting held in Nuku'alofa, Tonga From the 24th to 28th April 2017. The Strategy promotes a consistent approach in five main areas of safety of navigation: i) Governance; ii) Navigation and meteorological services and warnings; iii) Hydrographic services; iv) Aids to Navigation and Vessels Traffic Services; and v) Search and Rescue services.
- NAVAREA XIV Coordinator report to SWPHC16 included an individual assessment of MSI from each National Coordinator (**Annex C**)

The strategy of preceding SWPHC meetings with a CB workshop has proved very beneficial, with the February 2019 workshop and meeting attended by approx. 50 persons, the large majority were from PICTs. All participants were extremely active and contributed to collective and own knowledge of hydrography.

## 7. Conclusion

SWPHC, in collaboration with other international, regional and bi-lateral partners, is committed to carrying forward hydrographic, nautical cartographic and capacity building activities in close alignment with IHO objectives and goals.

## 8. Actions required of CBSC:

The CBSC is invited to:

- a. note the report.
- b. note the value and effectiveness of preceding SWPHC meetings with CB related workshops.
- c. note SWPHC's commitment in carrying forward hydrographic, nautical cartographic and capacity building activities in close alignment with IHO objectives and goals
- d. take any action considered appropriate.

Adam Greenland  
SWPHC RHC CB Coordinator

Annex A: Assessment of Capacity Building Phase Stage of Coastal States (Excel file)  
Annex B: Status of SWP Coastal States wrt the phases of the IHO CB Strategy (PDF)  
Annex C: NAVAREA XIV Coordinator report to SWPHC16, including National Coordinators self-assessments (PDF)

International Hydrographic Organization  
Assessment of Capacity Building Phase Stage of Coastal States

N.	Coastal State/Territory	NHC/NHCC	Phase 1	Phase 2	Phase 3
9	Australia	N/A			
40	Cook Islands	2	2	1	3
60	Fiji	-1	4	2	2&3
62	France	N/A			
91	Kiribati	1	2	1	3
109	Marshall Islands	0	1	-1	3
113	Micronesia (Federated States of)	-1	-1	-1	3
121	Nauru	0	1	1	3
124	New Zealand	N/A			
128	Niue	1	2	1	3
132	Palau	0	1	-1	3
134	Papua New Guinea	2	4	2	3
149	Samoa	2	1	1	3
160	Solomon Islands	2	2	2	3
178	Tonga	2	4	1	3
187	United Kingdom	N/A			
189	United States of America	N/A			
192	Vanuatu	2	2	1	3
	Tokelau	0	1	-1	3
	American Samoa	-1	3	3	3
	French Polynesia	-1	4	3	3
	Guam	-1	3	3	3
	New Caledonia	1	4	3	3
	Northern Mariana Is	-1	3	3	3
	Pitcairn Is	-1	3	3	3
	Tuvalu	-1	1	-1	3
	Wallis & Futuna	1	4	3	3

**CBSC17 2019**

SWPHC

SWPHC

Last TV	SWPHC	PCA
	SWPHC	
2013	SWPHC	LINZ
	SWPHC	UKHO
	SWPHC	
2015	SWPHC	UKHO
	SWPHC	NGA
	SWPHC	NGA
	SWPHC	UKHO
	SWPHC	
2016	SWPHC	LINZ
	SWPHC	NGA
	SWPHC	AHS
2016	SWPHC	LINZ
2012	SWPHC	AHS
2014	SWPHC	LINZ
	SWPHC	
	SWPHC	
2015	SWPHC	UKHO
	SWPHC	LINZ
	SWPHC	NGA
	SWPHC	SHOM
	SWPHC	NGA
	SWPHC	SHOM
	SWPHC	NGA
	SWPHC	UKHO
2016	SWPHC	UKHO
	SWPHC	SHOM



**Status at SWPHC16 Feb 2019**

Country	SWPHC Status	IHO Member	Bilateral (Y/N)	Phase 1			Phase 2		Phase 3		PCA
				Hydro Governance	National MSI Coordinator	NHCC (who & how often do you meet?)	Hydro Survey		Charting		
							In-house	Bilateral	In-house	Bilateral	
FM/AM/O											
PNG (SWPHC16 Feb 2019)	FM	Y	Y	MoU btwn DoT & PNG Govt.	Yes. Nick Pion (NMSA) Comms with AHO for NTM Engagement with AMSA to be a focus for AMSA (NAVAREA X Coordinator)	NMSA - Maritime Safety Committee meeting (1 per yr), AHO attend 1 per yr		Yes, with AHO	Distribution of paper charts, thro AHO POD	Yes, with AHO, including paper charts and ENCs	AU
Cook Islands (SWPHC16 Feb 2019)	AM	X - aspiration to join	Y - with NZ	In progress (2016) - Need to amend transport act to better reflect responsibilities / authority Bill for the establishment of the Hydro Service - legislation to follow	?Yes - established in MoT (RAS) Limited MSI received by PCA Verify with NAVAREA XIV Coordinator report re. MSI received	Established June 2016 Meets once a year	X	X	X	Yes, with NZ	NZ
Samoa (SWPHC16 Feb 2019)	AM	Cabinet Approval for membership is expected in mid 2019	Y - with NZ	NHCC is in the process of their Workplan towards implementing the important provisions of the Shipping Act 1998 in relation to Hydrographic matters.  SPC SoN visit scheduled March 2018 - completed	MSI Coordinator is the CEO Ministry of Works, Transport & Infrastructure Magele Hoe Viali Limited MSI received by PCA Verify with NAVAREA XIV Coordinator report re. MSI received	NHCC established in May 2017. Plan to meet annually	X	X	X	Yes, with NZ	NZ
Tonga (SWPHC16 Feb 2019)	FM	Y	Y, with NZ	Investigating funds to establish Governance	Yes, Director MPD	NHCC in place, last met Oct 2017	X	X	X	Yes, with NZ	NZ
Fiji (SWPHC16 Feb 2019)	FM	Y	Y, with UK	Maritime Transport Decree (MTD) in force Sept 2014, provision for hydro services	Yes. MSAF, Sunil Kumar	In process of re-establish, 2019. To meet annually	1 Survey Motor Boat and 1 survey vessel	x	Developing	Yes, with UKHO	UK
Kiribati (SWPHC16 Feb 2019)	AM	in progress	Draft cooperation agreement 2016 in progress	in progress	Established a National MSI Coordinator	in process in next 2 years	X	Draft cooperation agreement 2016 in progress	X	Draft cooperation agreement 2016 in progress	UK
Tuvalu (SWPHC16 Feb 2019)	Aspiration for AM	Investigating	In progress with UKHO	None formal but included as part of Maritime Legislative Review being conducted by NZ MFAT SPC SoN mission Feb 2018	Director Marine and Ports defacto MSI coord but not resourced for this Cabinet paper to be re-submitted March 2018	No	X	X	X	X	UK
Vanuatu (SWPHC16 Feb 2019)	FM	Y	Y, with UK	Framework drafted with UKHO, going to Cabinet Feb 2018	National Coordinator appointed Robson	Yes	X	X	X	UKHO	UK
Solomon Islands (SWPHC16 Feb 2019)	AM	in-progress	Y, with AU	Maritime Act 2009, SIMA Act 2018	SIMSA, National Hydrographer Better engagement with AMSA required	Yes, meets annually	Y	X	X	MoU signed with AHO Aug 2017	AU
Palau (SWPHC16 Feb 2019)	AM	X	TBC	Executive Order n. 381 (PALARIS)	No	No	X	X	X	X	US

Status at SWPHC16 Feb 2019

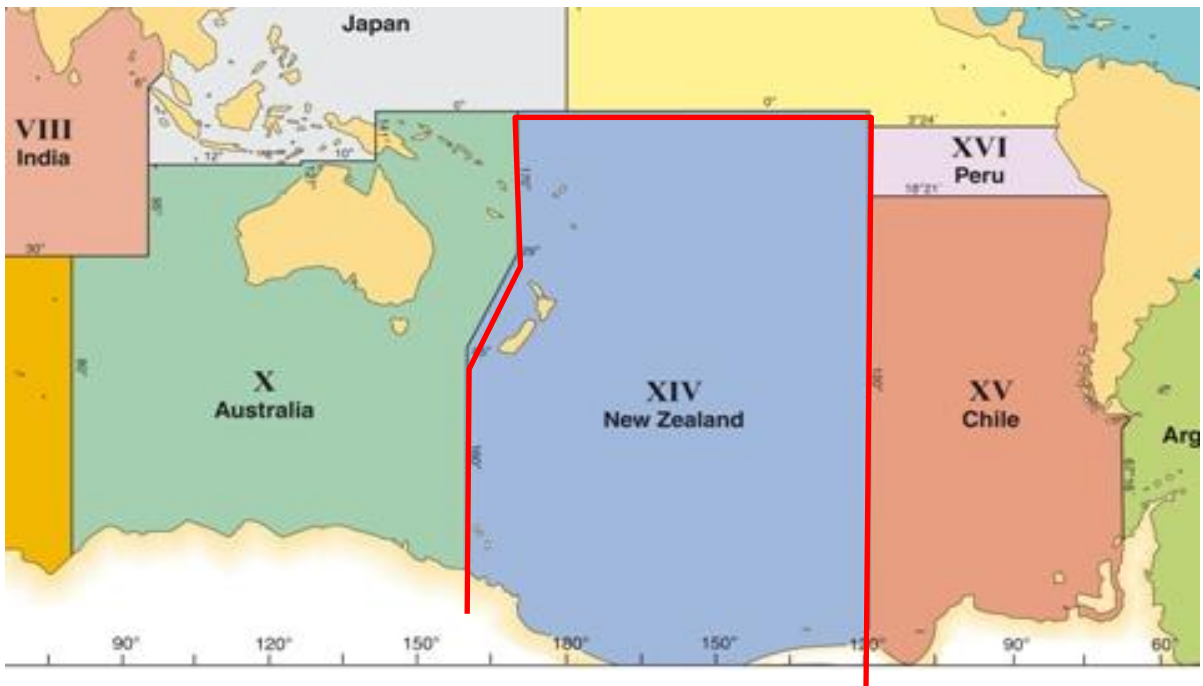
Country	SWPHC Status	IHO Member	Bilateral (Y/N)	Phase 1			Phase 2		Phase 3		PCA
	FM/AM/O			Hydro Governance	National MSI Coordinator	NHCC (who & how often do you meet?)	Hydro Survey		Charting		
							In-house	Bilateral	In-house	Bilateral	
American Samoa											US
FSM											US
French Polynesia											FR SHOM
Marshall Islands											US
Nauru (SWPHC16 Feb 2019)	AM	X	X	No. Mr Kemp Detenamo - Director Maritime and Ports is defacto hydrographic representative. Visit by UKHO/CME in 2018	No	No	X	X	X	X	UK
N Mariana Islands											US
Guam											US NGA
Pitcairn Islands											UK
Tokelau (SWPHC16 Feb 2019)	O	X	N	No	No attended MSI traing Aug 2014	No	x	x	x	x	NZ
Wallis & Futuna											FR SHOM
New Caledonia	O		France	Assumed by France (SHOM)	Navy & MRCC Noumea	Proposed by France (SHOM), agreed by Govt	France (SHOM)	France (SHOM)	France (SHOM)	France (SHOM)	FR SHOM
Niue (SWPHC16 Feb 2019)	AM	X	Y March 2017	Marine Spatial Planning workshop Feb 2018 SPC SoN gap analysis assessment. Priority for Cabinet iby 2020. TBC whether hydrography will be part of it (work in progress)	Noted by Cabinet. Lynsey Talagi in role at moment, seeking to recruit later in 2018 Training required	No Marine Spatial Planning workshop (work in progress)	X	X	X	Y, with NZ	NZ

MSI in NAVAREA XIV  
Submitted by New Zealand

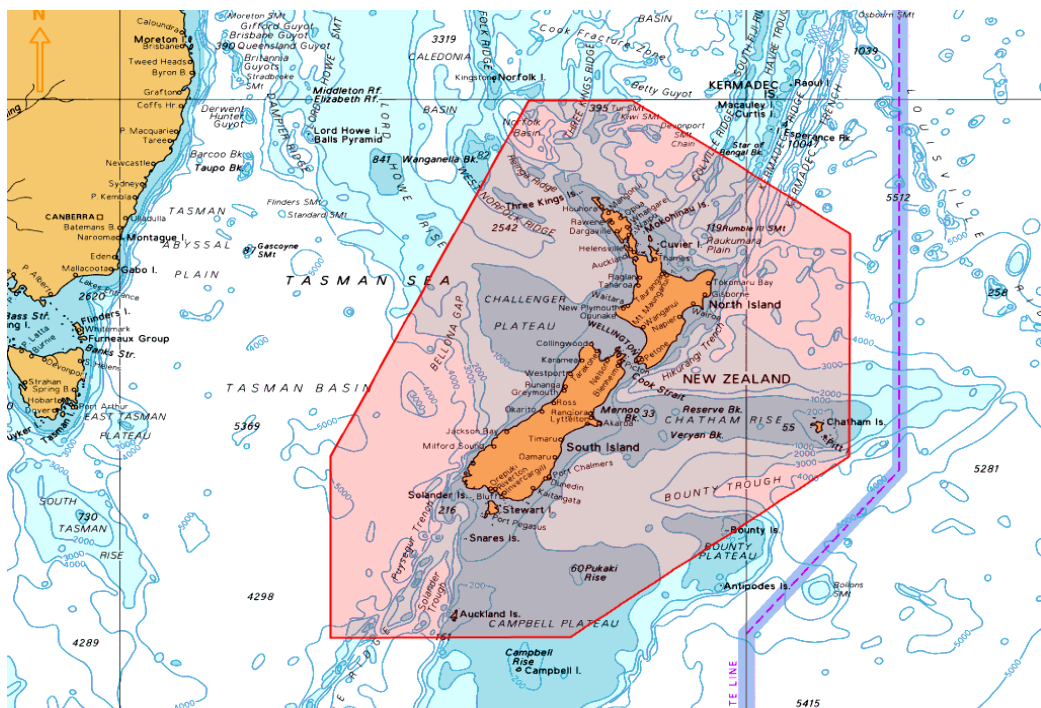
1. Background:

The limits of NAVAREA XIV are given as:

- 69° 37'S, 160° 00'E (Antarctic coast) to
- 45° 00'S, 160° 00'E to
- 29° 00'S, 170° 00'E to
- 00° 00'N, 170° 00'E to
- 00° 00'N, 120° 00'W to
- 73° 50'S, 120° 00'W (Antarctic coast)

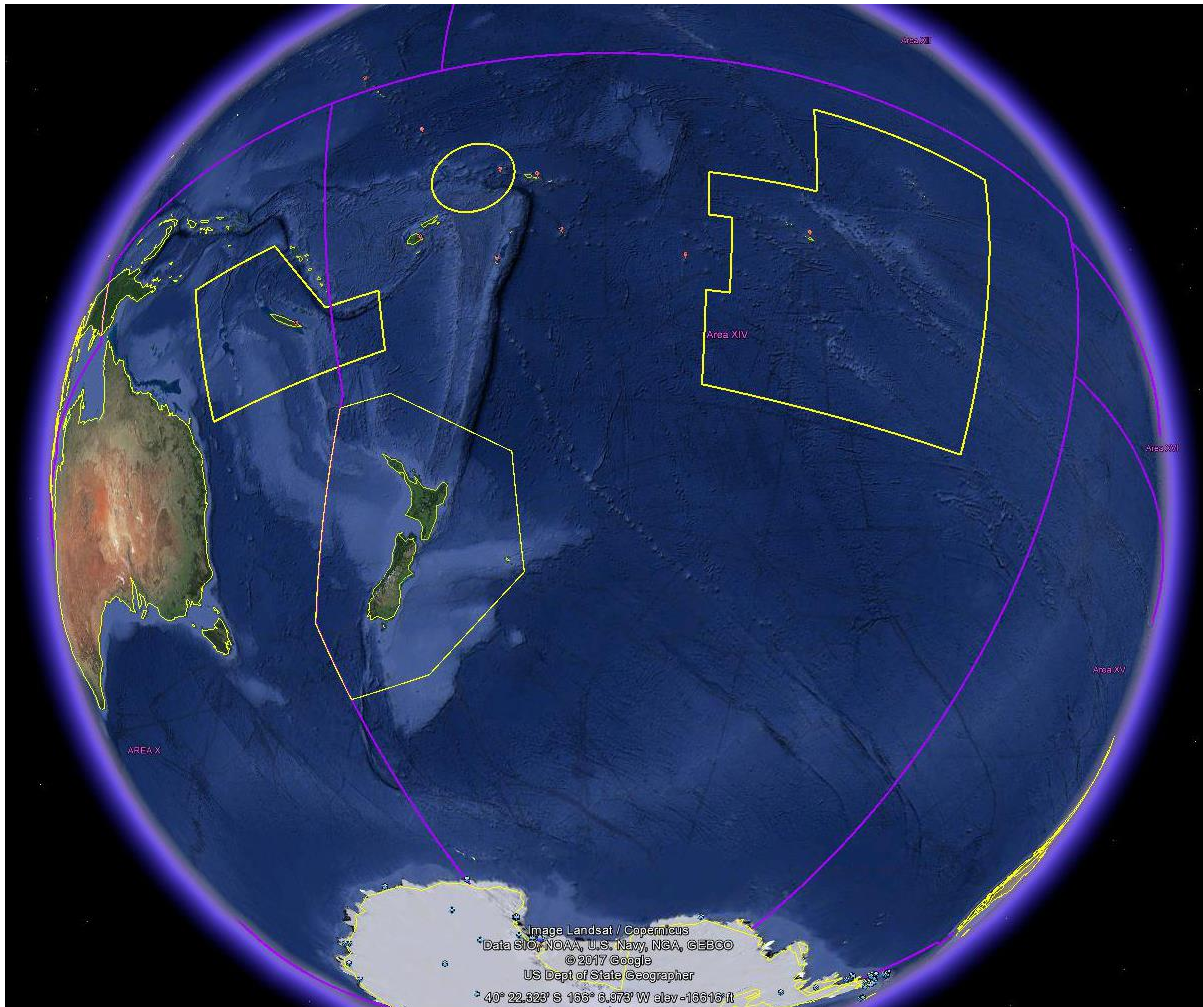


New Zealand Coastal Warning Area 'Z' is depicted below.



## NAVAREA XIV Report to SWPHC 16

NAVAREA XIV with all Coastal Warning Areas depicted below.



NAVAREA XIV and New Zealand Coastal Warnings are broadcast via:

**Taupo Maritime Radio ZLM (Radio Telephony)** at the first scheduled time following receipt and then at the scheduled times as per ALRS Vol 3(2), 2017/2018 Edition whilst the warnings are in force or until they have been promulgated by other means; and

**EGC SafetyNET II system** via the Pacific Ocean Region (POR) and Atlantic Ocean Region – West (AOR-W) satellites, through the Inmarsat Maritime Safety Servers for broadcast to Inmarsat C and Mini C via the Network Control Station (NCS) and to Fleet Safety via the Broadband Global Area Network Satellite Access Station (BGAN SAS). Warnings broadcast on receipt and scheduled at 0900 and 2100 UTC.

The warnings are broadcast and monitored by Taupo Maritime Radio through a Mobile Earth Station (MES). The Australian Maritime Safety Authority (AMSA) assists New Zealand in monitoring repeat EGC transmissions via an EGC supervisory system. Transmitted NAVAREA XIV and New Zealand Coastal Navigation Warnings are emailed to Taupo Maritime Radio, where the Coastal Warnings are checked, and NAVAREA XIV warnings are forwarded to the NAVAREA XIV Coordinator.

## NAVAREA XIV Report to SWPHC 16

Operational Points of Contact for National Co-ordinators within the NAVAREA

COUNTRY	INSTITUTION	TELEPHONE	FACSIMILE	EMAIL
Cook Islands	Ministry of Transport	+682 28810		<a href="mailto:saungaki.rasmussen@cookislands.gov.ck">saungaki.rasmussen@cookislands.gov.ck</a>
French Polynesia	JRCC Tahiti	+689 541 616	+689 404 23915	<a href="mailto:contact@jrcc.pf">contact@jrcc.pf</a>
Fiji	Maritime Safety Authority Fiji	+679 331 5266	+679 331 3127	<a href="mailto:msi@msaf.com.fj">msi@msaf.com.fj</a>
Kiribati	Ministry of Information, Communications, Transport & Tourism Development	+686 730 97992		<a href="mailto:riennang.ioane@mcttd.gov.ki">riennang.ioane@mcttd.gov.ki</a>
New Caledonia	MRCC New Caledonia	+687 292 332	+687 292 303	<a href="mailto:operations@mrcc.nc">operations@mrcc.nc</a>
New Zealand	RCCNZ	+64 4 577 8030	+64 4 577 8038	<a href="mailto:rccnz@maritimenz.govt.nz">rccnz@maritimenz.govt.nz</a>
Niue	Ministry of Transport	+683 6983		<a href="mailto:lynsey.talagi@mail.gov.nu">lynsey.talagi@mail.gov.nu</a>
Samoa	Ministry of Works, Transport & Infrastructure	+685 21 611		<a href="mailto:tapaga.collins@mwti.gov.ws">tapaga.collins@mwti.gov.ws</a> <a href="mailto:makerita.atonio@mwti.gov.ws">makerita.atonio@mwti.gov.ws</a>
Tonga, Kingdom of	Ministry of Infrastructure, Marine & Ports Division	+676 22 555	+676 42 467	<a href="mailto:sioelif@infrastructure.gov.to">sioelif@infrastructure.gov.to</a>
Tuvalu		+688 20055		<a href="mailto:taasi.pittoi@gmail.com">taasi.pittoi@gmail.com</a>
Wallis & Futuna	MRCC New Caledonia	+687 292 332	+687 292 303	<a href="mailto:operations@mrcc.nc">operations@mrcc.nc</a>

### 2. Comments:

The NAVAREA XIV Coordinator has initiated six monthly communications checks with the nine National Coordinators (outside of New Zealand) in an effort to improve communications and ensure contact details are correct. To date the response rate has been 100%.

#### NAVAREA XIV EGC Messages

2016	2017	2018
98	145	190

The increase in NAVAREA XIV Warnings is predominantly due to improved communications with Pacific Island National Coordinators through the efforts of the SWPHC Members and the IHO Capacity Building Programme (see item 6) resulting in more MSI received.

Subjects of NAVAREA XIV Warnings included casualties to AtoNs, pipe and cable laying operations, space debris, tsunami threats, dredging operations, drifting hazards, shoals located, wrecks located, drilling operations and gunnery exercises. During 2018 warnings were broadcast regarding the Inmarsat migration of GMDS Services from the I-3 to the I-4 satellite constellation.

## NAVAREA XIV Report to SWPHC 16

### MSI Received from Coastal States within NAVAREA XIV

Coastal State/Country	Number of MSI messages	Topics/Subjects of messages	IHO CB Funded MSI Courses Attended
Cook Islands	2	Wrecks	2010, 2014, 2016, 2018
Fiji	64	AtoN, Cable laying ops, Pipeline installations, Wrecks	2010, 2014, 2016, 2018
French Polynesia	37	Military exercises, Space debris	2010, 2014, 2016, 2018
New Caledonia	28	Military exercises	2010, 2014, 2016, 2018
Niue	1*		2016, 2018
Samoa	1	AtoN	2016, 2018
Tonga	6	AtoN, Wrecks, Shoal	2016, 2018
Tuvalu	1	AtoN	2016, 2018
Wallis & Futuna	Covered by New Caledonia		Covered by New Caledonia
Kiribati	3	AtoN	2016, 2018

\* MSI message received but no warning required

### 3. National reports

Templates sent to 10 National Coordinators in Navarea XIV. Nine completed reports received and appended to this report.

### 4. NAVTEX Coverage:

N/A

### 5. Operational Issues:

#### NAVAREA XIV

The Inmarsat I3-I4 migration, specifically the westerly repositioning of the POR and AOR-W satellites challenged New Zealand's ability to monitor NAVAREA and METAREA XIV EGC broadcasts. Without any landmass in the area of NAVAREA/METAREA XIV under the new AOR-W footprint, an EGC receiver could not be physically located to monitor AOR-W EGC reception. NAVAREA XIV has initiated the following model, with the support of the WWNWS Chair, to monitor MSI broadcasts:

Following every MSI broadcast

- All broadcast transmissions are monitored via the SafetyNET II interface, which provides system confirmation of message status and text display of the message sent. Monitoring of broadcast reception via the POR satellite continues via the existing INM-C EGC receiver.

Once Daily

- A ship in the eastern part of NAVAREA XIV, under the AOR-W footprint is identified via Satellite AIS (S-AIS) and requested to confirm message reception.

#### National Coordinators

As per National Coordinator reports.

## NAVAREA XIV Report to SWPHC 16

### 6. Capacity Building:

LINZ and the Ministry of Foreign Affairs & Trade (NZ Aid programme) are working together on the Pacific Regional Navigation Initiative (PRNI) to improve maritime safety throughout the region. Initially a 5 year programme, in January 2018 it was extended by 2 years to 2021. LINZ has a focus on the Cook Islands, Niue, Samoa, Tokelau and Tonga. This project includes; hydrography risk assessments for Niue, Samoa and Tokelau (completed); capacity building to assist PICs reach Phase 1 of the IHO Capacity Building Strategy, in particular, the establishment of a National MSI Coordinator position; and hydrographic surveys in Cook Islands, Niue, Samoa and Tonga to improve chart adequacy and accuracy.

Through the South West Pacific Hydrographic Commission (SWPHC) Capacity Building Programme, a MSI training course was held in Wellington, New Zealand between 6th and 9th August 2018. Participants from 14 Pacific Island Countries (PIC) attended – Cook Islands, Fiji, French Polynesia, Kiribati, New Caledonia, Marshal Islands, Niue, Papua New Guinea, Samoa, Solomon Islands, Tokelau, Tonga, Tuvalu and Vanuatu. The training was led by the NAVAREA XIV Coordinator, with support from LINZ as the SWPHC CB Coordinator, and with instructional assistance from NAVAREA X.

New Zealand has received requests for travel to individual countries to deliver MSI training, in addition to facilitating regional MSI courses. As all National Coordinators are invited to and have participated in the regional courses, New Zealand believes the biennial SWPHC Regional MSI Courses provide the most effective and efficient method for delivering MSI training to all SWPHC National Coordinators. If additional, abbreviated MSI workshops can be accommodated within existing assistance programmes, the NAVAREA XIV Coordinator will endeavour to facilitate these during SAR training visits, however National Coordinators should understand that the travel and logistics to conduct individual training in addition to scheduled courses would place significant pressure on already committed resources.

National Coordinators are aware that guidance and support is not limited to the formal training courses; the NAVAREA XIV Coordinator is available 24/7 to assist.

The IHO is actively encouraging Regional Hydrographic Commissions to identify National MSI Coordinators who can be appointed as additional MSI trainers. It is envisaged that MSI trainers would become part of the delivery team. This initiative is an action identified at IHO's Inter-Regional Coordination Committee at IRCC9 (Actions 2, 3, 4 & 5) and Capacity Building Sub-Committee at CBSC15 (action 15), June 2017. In May 2018, the SWPHC Chair invited Maritime Safety Authority of Fiji (MSAF), as National MSI Coordinator, to become part of the delivery team. MSAF supports this initiative and Mr Sunil Kumar was part of the team delivering the MSI training in August 2018.

In conjunction with the Maritime New Zealand (MNZ) and Ministry of Foreign Affairs and Trade (MFAT) the Rescue Coordination Centre New Zealand (RCCNZ) continues to deliver Search and Rescue and Maritime Safety and Prevention Training across the Pacific through the Pacific Maritime Safety Programme (PMSP). During 2018, RCCNZ has delivered training and coordinated on water SAR exercises in Tonga, Kiribati, Samoa and Tuvalu, with further training scheduled for 2019. The training being delivered by New Zealand is part of a larger Pacific Community (SPC) capacity building program with a long term view to improve SAR governance, SAR coordination and SAR Response proficiency in the region.

### 7. Other Activities:

New Zealand is actively involved with a number of IMO and IHO Sub-Committees and Working Groups; and capacity building in the SWP region through the Regional Hydrographic Commission and the NZ Aid Programme, PRNI

### 8. NAVAREA Website:

NAVAREA XIV warnings in force: [www.maritimenz.govt.nz/navarea](http://www.maritimenz.govt.nz/navarea)  
The website is updated daily during normal office working hours.  
The date and time of the last update is displayed on the web site.

## NAVAREA XIV Report to SWPHC 16

### 9. NAVAREA Contact Information:

NAVAREA XIV Coordinator  
Maritime New Zealand  
RCCNZ  
41 Percy Cameron Street, Avalon Studios Level 1  
PO Box 30050  
LOWER HUTT 5040  
New Zealand  
Tel: +64 4 577 8030 (24 hours)  
FAX: +64 4 577 8038 (24 hours)  
E-mail [rccnz@maritimenz.govt.nz](mailto:rccnz@maritimenz.govt.nz) (24 hours)  
Website: <http://www.maritimenz.govt.nz/navarea>

### 10. Actions requested:

The New Zealand representative to SWPHC to note the information provided.

### 11. Synopsis:

This report highlights the MSI activities for the year 2018. New Zealand is actively involved with a number of IMO and IHO Sub-Committees and Working Groups; and capacity building in the SWP region for MSI, charting and hydrography through the Regional Hydrographic Commission and the NZ Aid Programme, PRNI, and maritime safety and SAR through the Pacific Community (SPC) and PMSP. The NAVAREA XIV Coordinator is regularly engaging with the National Coordinators in NAVAREA XIV in an effort to improve communications and ensure contact details are correct.



## National Reports to Regional Hydrographic Commissions

Regional Hydrographic Commissions (RHCs) are intended to provide, under the auspices of the International Hydrographic Organization regional, coordination with regard to nautical information, hydrographic surveys, production of nautical charts and documents, training, technical cooperation and hydrographic capacity building projects.

The RHCs are required to report to the International Hydrographic Conference on activities, hydrographic capacity and requirements within their region. They are also required to submit an annual report to the International Hydrographic Bureau indicating progress made against the key targets in the IHO Work Programme. To assist in the RHC gathering information on the activities within their area of responsibility a number of reports are required from National Organizations.

Details of these reporting requirements are available in IHO Resolution 2/1997 as amended which is available from the IHO Website;

[http://iho.int/iho\\_pubs/misc/M3-E-JAN13.pdf](http://iho.int/iho_pubs/misc/M3-E-JAN13.pdf)

Part of the reporting requirements relate to Maritime Safety Information services. This document is provided to assist National Coordinators in capturing the required information and is based on the current approved World Wide Navigational Warning Service Template.

On completion of the form National Coordinators are requested to pass the information to the relevant NAVAREA Coordinator for their Region.

### Associated NAVAREA Coordinator

*(Details should be completed by NAVAREA Coordinator prior to distributing form)*

NAVAREA Region	XIV
Primary Point of Contact	Dave Wilson and Conrad Reynecke
Organization	Rescue Coordination Centre New Zealand
Email Address	rccnz@maritimenz.govt.nz
Telephone No.	+64 4 5778030
Facsimile No.	+64 4 5778038
Postal Address	Rescue Coordination Centre New Zealand 41 Percy Cameron Street, Avalon Studios Level 1 PO Box 30050, Lower Hutt 5040 Wellington New Zealand

*[Guidance on what information to be included can be obtained by hovering the mouse over the relevant fields in the form. If additional guidance or assistance in completing the form is required then the National Coordinator should contact the relevant NAVAREA Coordinator.]*

**National Maritime Safety Information  
(MSI) Self Assessment**

New Zealand

RCCNZ

**1. Maritime Area**

New Zealand Coastal Warning Area Z is a defined polygon for the purpose of broadcasting NZ Coastal Navigation Warnings via Inmarsat SafetyNET.

The limits of the area are: 30-00S 169-30E to 30-00S 174-30E to 36-00S 175-00W to 45-00S 175-00W to 51-30S 171-30E to 51-30S 160-00E to 45-00S 160-00E

**2. Operational Points of Contact for the National Coordinator**

Institution/Organization	Telephone	Facsimile	Email
RCCNZ	+64 4 5778030	+64 4 5778038	rcenz@maritimenz.govt.nz

**3. GMDSS Master Plan**

Is plan up to date? Yes

Date of last update; Jul 2018

**MSI - National Coordinator Procedures**

Do you have access to IMO/IHO/WMO Joint Manual on MSI? Yes

Do you follow the suggested warning format in Joint Manual? Yes

Have you or your staff received MSI Training? Yes

Are you aware of your NAVAREA Coordinator? Yes

Do you pass MSI to NAVAREA Coordinator? Yes

Do you request NAVAREA Coordinator broadcast MSI? Yes

[Remarks about MSI - National Coordinator Procedures]

MSI Broadcast Service				
NAVTEX	SafetyNET			HF NBDP
	NAV	MET	SAR	
<input type="checkbox"/>	<input checked="" type="checkbox"/>	<input type="checkbox"/>	<input checked="" type="checkbox"/>	<input type="checkbox"/>

Complete Section 4

*Specifics of equipment used and software version with date updated*

Equipment Type for Ports and Local Area	Software Version	Date of Latest Update
Thrane & Thrane easyMail	V2.00	Build 025

**Summary of National Maritime Safety Information Issued**

2016		2017		2018	
Total	Average Elapsed Time	Total	Average Elapsed Time	Total	Average Elapsed Time
298	33 Mins	267	16 Mins	253	18 Mins

**4. International SafetyNET Service**

Does your Administration broadcast MSI through the International SafetyNET Service? Yes

Is it Operational now? Yes If not indicate the expected date of operation

NAV/MET Area	Type of Information	Country	LES/LESO	Ocean Region/LES ID	MSI Coastal Warning Area <sup>(1)</sup> (if applicable)	Broadcast Schedule (UTC)	Status of Implementation
	NAV <sup>(2)</sup>	* NZ	Burum	POR/AOR-W	Z	0900 & 2100	Operational
	MET <sup>(3)</sup>	**					
	SAR <sup>(4)</sup>	NZ	Burum	POR/AOR-W			Operational

(1) Provide a diagram showing limits of Coastal Warning Areas, including B1 Codes (2) NAV = Navigational Warnings  
 (3) MET = Meteorological Warnings (4) SAR = Search and Rescue Alerts  
 \* - NAVAREA Coordinator responsible for the Area \*\* - The issuing service nominated by WMO for METAREA services, responsible for the area

**5. NAVTEX Coverage**

New Zealand does not broadcast coastal warnings via NAVTEX.

NAVTEX Coast Station	Frequency	Position of Antenna	Range (NM)	B1 Character	Transmission Times	Language

**6. HF Narrow Band Direct Printing (NBDP) MSI Broadcast Service**

Does your Administration broadcast MSI through HF NBDP? No

Is it Operational now? If not indicate the expected date of operation

Country	NBDP Coast Station	Position	Frequency Band	Schedule (UTC)	Status
			4MHz (4210KHz)		
			6MHz (6425KHz)		
			8MHz (8416.5KHz)		
			12MHz (12579KHz)		
			16MHz (16806.5KHz)		
			19MHz (19680.5KHz)		
			22MHz (22376 KHz)		
			26MHz (26100.5 KHz)		

**7. Does your Administration broadcast MSI through other means?**

In addition to EGC broadcasts; NZ also broadcast navigation warnings on VHF, MF and HF.

**8. Operational Issues**

None.

**9. Contingency Planning**

Maritime New Zealand (Kordia/Taupo Maritime Radio) uses the Inmarsat SafetyNET II system to broadcast Navigational Warnings and RescueNET to broadcast SAR Information. The versatility of using web portals, in addition to Kordia having back-up servers, reduces the risk of a New Zealand-based single point of failure. In the event of a total system failure at Kordia, web access is available via RCC New Zealand which also has back-up servers and multiple redundant systems in place

**10. Capacity Building**

NZ National Coordinator provides instructors to every MSI Capacity Building Course in the SWP region. Training for NZ National Coordinator staff is conducted in-house and no assistance is required through the Capacity Building Fund.

**11. Other Activities**

RCCNZ attended WWNWS 10 in Monaco, August 2018.  
Maritime New Zealand will attend NCSR 6 January 2019 and the DRWG 17 following this.

**12. National Maritime Website**

[www.maritimenz.govt.nz/navarea](http://www.maritimenz.govt.nz/navarea)

**13. Recommendations**

None

**14. Summary**

This self-assessment report highlights the MSI activities for the year 2018. NZ is actively involved with a number of IMO and IHO Sub-Committees and Working Groups; and capacity building in the South West Pacific region.

**15. Remarks/Additional Information**

None

**16. Attachments**

--

**National Maritime Safety Information  
(MSI) Self Assessment  
SAMOA**

Ministry of Works, Transport & Infrastructure (

**1. Maritime Area**

Samoa Coastal Navigational Warning area covers Samoa waters including 200 nautical miles exclusive economic zone (EEZ) of Samoa.

**2. Operational Points of Contact for the National Coordinator**

Institution/Organization	Telephone	Facsimile	Email
MWTI	+685 21611	+685 28688	tapaga.collins@mwti.gov.ws
			makerita.ationio@mwti.gov.ws

**3. GMDSS Master Plan**

Is plan up to date? No Date of last update; Nil

**MSI - National Coordinator Procedures**

Do you have access to IMO/IHO/WMO Joint Manual on MSI? Yes

Do you follow the suggested warning format in Joint Manual? Yes

Have you or your staff received MSI Training? Yes

Are you aware of your NAVAREA Coordinator? Yes

Do you pass MSI to NAVAREA Coordinator? Yes

Do you request NAVAREA Coordinator broadcast MSI? Yes

[Remarks about MSI - National Coordinator Procedures]

MSI Broadcast Service						
NAVTEX	SafetyNET			HF NBDP		
	NAV	MET	SAR			
<input type="checkbox"/>	<input checked="" type="checkbox"/>	<input type="checkbox"/>	<input type="checkbox"/>	<input type="checkbox"/>		

Complete Section 4

*Specifics of equipment used and software version with date updated*

Equipment Type for Ports and Local Area	Software Version	Date of Latest Update
Maritime VHF & HF Radio		

**Summary of National Maritime Safety Information Issued**

2016		2017		2018	
Total	Average Elapsed Time	Total	Average Elapsed Time	Total	Average Elapsed Time
0	<input type="text"/> Mins	0	<input type="text"/> Mins	1	<input type="text"/> Mins

**4. International SafetyNET Service**

Does your Administration broadcast MSI through the International SafetyNET Service? No

Is it Operational now? No

If not indicate the expected date of operation

NAV/MET Area	Type of Information	Country	LES/LESO	Ocean Region/LES ID	MSI Coastal Warning Area <sup>(1)</sup> (if applicable)	Broadcast Schedule (UTC)	Status of Implementation
	NAV <sup>(2)</sup>	*					
	MET <sup>(3)</sup>	**					
	SAR <sup>(4)</sup>						

(1) Provide a diagram showing limits of Coastal Warning Areas, including B1 Codes

(2) NAV = Navigational Warnings

(3) MET = Meteorological Warnings

(4) SAR = Search and Rescue Alerts

\* - NAVAREA Coordinator responsible for the Area    \*\* - The issuing service nominated by WMO for METAREA services, responsible for the area

**5. NAVTEX Coverage**

Samoa does not broadcast MSI via NAVTEX as this is not practiced in the SWP region.

NAVTEX Coast Station	Frequency	Position of Antenna	Range (NM)	B1 Character	Transmission Times	Language

**6. HF Narrow Band Direct Printing (NBDP) MSI Broadcast Service**

Does your Administration broadcast MSI through HF NBDP?

No

Is it Operational now? No

If not indicate the expected date of operation

Country	NBDP Coast Station	Position	Frequency Band	Schedule (UTC)	Status
			4MHz (4210KHz)		
			6MHz (6425KHz)		
			8MHz (8416.5KHz)		
			12MHz (12579KHz)		
			16MHz (16806.5KHz)		
			19MHz (19680.5KHz)		
			22MHz (22376 KHz)		
			26MHz (26100.5 KHz)		

**7. Does your Administration broadcast MSI through other means?**

MWTI as the competent authority disseminates MSI by e-mail and text messages. Awareness and retrieving relevant information from affected parties such as Ministry of Agriculture and Fisheries and other Maritime Stakeholders are done through circular letters issued

**8. Operational Issues**

MWTI is currently working on establishing MSI Coordinator position through Cabinet submission for approval to do so.

**9. Contingency Planning**

MSI messages sent to the NAVAREA XIV Coordinator, RCCNZ by email are promulgated.

**10. Capacity Building**

MWTI representatives have participated in the past MSI training courses conducted during SWPHC meetings as well as some trainings offered by LINZ. However there is still a need for the continuation of this training in the future.

**11. Other Activities**

LINZ confirmed that hydrographic survey for all areas identified during the risk assessment in 2017 will be conducted in 2020.

**12. National Maritime Website**

[www.mwti.gov.ws](http://www.mwti.gov.ws)

**13. Recommendations**

It is strongly recommended that LINZ continues to assist Samoa through provision of relevant trainings and upgraded navigational charts.

**14. Summary**

This self-assessment report highlights the MSI activities for the year 2018. MWTI continues to work with relevant parties to obtain relevant information and communicated via H.Notes to LINZ and RCCNZ for promulgation in Notice to Mariners.

**15. Remarks/Additional Information**

Nil

**16. Attachments**

### National Reports to Regional Hydrographic Commissions

Regional Hydrographic Commissions (RHCs) are intended to provide, under the auspices of the International Hydrographic Organization regional, coordination with regard to nautical information, hydrographic surveys, production of nautical charts and documents, training, technical cooperation and hydrographic capacity building projects.

The RHCs are required to report to the International Hydrographic Conference on activities, hydrographic capacity and requirements within their region. They are also required to submit an annual report to the International Hydrographic Bureau indicating progress made against the key targets in the IHO Work Programme. To assist in the RHC gathering information on the activities within their area of responsibility a number of reports are required from National Organizations.

Details of these reporting requirements are available in IHO Resolution 2/1997 as amended which is available from the IHO Website;

[http://iho.int/iho\\_pubs/misc/M3-E-JAN13.pdf](http://iho.int/iho_pubs/misc/M3-E-JAN13.pdf)

Part of the reporting requirements relate to Maritime Safety Information services. This document is provided to assist National Coordinators in capturing the required information and is based on the current approved World Wide Navigational Warning Service Template.

On completion of the form National Coordinators are requested to pass the information to the relevant NAVAREA Coordinator for their Region.

#### Associated NAVAREA Coordinator

*(Details should be completed by NAVAREA Coordinator prior to distributing form)*

NAVAREA Region	XI
Primary Point of Contact	Notices to Mariners Office
Organization	Hydrographic and Oceanographic Departme
Email Address	tuho@jodc.go.jp jcg-tuho@navarea11.go.jp
Telephone No.	+81-3-3595 3571
Facsimile No.	+81-3-3595 3647
Postal Address	Japan Coast Guard 3-1-1, Kasumigaseki, Chiyoda-ku, Tokyo 135-8932

*[Guidance on what information to be included can be obtained by hovering the mouse over the relevant fields in the form. If additional guidance or assistance in completing the form is required then the National Coordinator should contact the relevant NAVAREA Coordinator.]*



**National Maritime Safety Information  
(MSI) Self Assessment**

Kiribati

Ministry of Information, Communications, Tra

**1. Maritime Area**

Kiribati Coastal Navigational Warning area covers Kiribati waters including 200 nautical miles exclusive economic zone (EEZ) of Kiribati for broadcasting of navigational warnings via Coast Radio Station (CRS) on VHF/HF.

**2. Operational Points of Contact for the National Coordinator**

Institution/Organization	Telephone	Facsimile	Email
MICTTD, Marine Division	686-74026003		riennang.ioane@mettd.gov.ki
	686-73097992		

**3. GMDSS Master Plan**

Is plan up to date? No

Date of last update;

**MSI - National Coordinator Procedures**

Do you have access to IMO/IHO/WMO Joint Manual on MSI? Yes

Do you follow the suggested warning format in Joint Manual? Yes

Have you or your staff received MSI Training? Yes

Are you aware of your NAVAREA Coordinator? Yes

Do you pass MSI to NAVAREA Coordinator? Yes

Do you request NAVAREA Coordinator broadcast MSI? Yes

For Kiribati MSI broadcast service, Navigational warning / safety, Met information and SAR information through radio communication VHF channel 16 to international and domestic vessels.

MSI Broadcast Service				
NAVTEX	SafetyNET			HF NBDP
	NAV	MET	SAR	
<input type="checkbox"/>	<input type="checkbox"/>	<input type="checkbox"/>	<input type="checkbox"/>	<input type="checkbox"/>

*Specifics of equipment used and software version with date updated*

Equipment Type for Ports and Local Area	Software Version	Date of Latest Update
Maritime VHF & HF Radio		

**Summary of National Maritime Safety Information Issued**

2016		2017		2018	
Total	Average Elapsed Time	Total	Average Elapsed Time	Total	Average Elapsed Time
Nil	<input type="text"/> Mins	219	<input type="text"/> Mins	136	<input type="text"/> Mins

**4. International SafetyNET Service**

Does your Administration broadcast MSI through the International SafetyNET Service? No

Is it Operational now? No If not indicate the expected date of operation

NAV/MET Area	Type of Information	Country	LES/LESO	Ocean Region/LES ID	MSI Coastal Warning Area <sup>(1)</sup> (if applicable)	Broadcast Schedule (UTC)	Status of Implementation
	NAV <sup>(2)</sup>	*					
	MET <sup>(3)</sup>	**					
	SAR <sup>(4)</sup>						

(1) Provide a diagram showing limits of Coastal Warning Areas, including B1 Codes

(2) NAV = Navigational Warnings

(3) MET = Meteorological Warnings

(4) SAR = Search and Rescue Alerts

\* - NAVAREA Coordinator responsible for the Area \*\* - The issuing service nominated by WMO for METAREA services, responsible for the area

**5. NAVTEX Coverage**

Kiribati does not broadcast MSI via NAVTEX as this is not practiced in the SWP region.

NAVTEX Coast Station	Frequency	Position of Antenna	Range (NM)	B1 Character	Transmission Times	Language

**6. HF Narrow Band Direct Printing (NBDP) MSI Broadcast Service**

Does your Administration broadcast MSI through HF NBDP? No

Is it Operational now? No If not indicate the expected date of operation

Country	NBDP Coast Station	Position	Frequency Band	Schedule (UTC)	Status
			4MHz (4210KHz)		
			6MHz (6425KHz)		
			8MHz (8416.5KHz)		
			12MHz (12579KHz)		
			16MHz (16806.5KHz)		
			19MHz (19680.5KHz)		
			22MHz (22376 KHz)		
			26MHz (26100.5 KHz)		

**7. Does your Administration broadcast MSI through other means?**

For Kiribati MSI broadcast service, Navigational warning / safety, Met information and SAR information through radio communication VHF channel 16 to international and domestic vessels.

Broadcasting is carried by Marine Guard via VHF & HF daily at 0803,1603.

**8. Operational Issues**

Radio Communication Coverage, sometimes VHF & HF communication is poor at far distances like Tarawa to the Line and Phoenix Groups.

**9. Contingency Planning**

MSI messages sent to the NAVAREA XIV and NAVAREA XI Coordinator by email are promulgated.

**10. Capacity Building**

Kiribati has attended previous SWPHC MSI courses. Further MSI training/Capacity Building is required.

**11. Other Activities**

**12. National Maritime Website**

[www.micttd.gov.ki](http://www.micttd.gov.ki)

**13. Recommendations**

**14. Summary**

This self-assessment report highlights the MSI activities for the year 2018. MSI database was first established in 2017 after attending MSI training in NZ, hence we have the MSI record for 2017 and 2018 only as stated above. Marine Guard (Kiribati) is very actively involved in providing MSI services to domestic and international vessels within the Kiribati coastal areas through VHF and HF radio communications.

**15. Remarks/Additional Information**

--

**16. Attachments**

**National Maritime Safety Information  
(MSI) Self Assessment**

FRANCE - New Caledonia

SHOM - MRCC Nouméa

**1. Maritime Area**

Two maritime areas:

First one is "N" with geographic coordinates as follow

- 14°00.00 S / 156°00.00 E

- 14°00.00 S / 163°30.00 E

- 21°30.00 S / 169°30.00 E

- 21°30.00 S / 174°30.00 E

**2. Operational Points of Contact for the National Coordinator**

Institution/Organization	Telephone	Facsimile	Email
MRCC New Caledonia	+ 687 29 23 32		operations@mrcc.nc
SHOM	+ 33 2 56 31 23 03		alain.paire@shom.fr

**3. GMDSS Master Plan**

Is plan up to date? Yes

Date of last update;

**MSI - National Coordinator Procedures**

Do you have access to IMO/IHO/WMO Joint Manual on MSI? Yes

Do you follow the suggested warning format in Joint Manual? Yes

Have you or your staff received MSI Training? Yes

Are you aware of your NAVAREA Coordinator? Yes

Do you pass MSI to NAVAREA Coordinator? Yes

Do you request NAVAREA Coordinator broadcast MSI? Yes

[Remarks about MSI - National Coordinator Procedures]

MSI Broadcast Service				
NAVTEX	SafetyNET			HF NBDP
	NAV	MET	SAR	
<input type="checkbox"/>	<input checked="" type="checkbox"/>	<input type="checkbox"/>	<input checked="" type="checkbox"/>	<input type="checkbox"/>

Complete Section 4

*Specifics of equipment used and software version with date updated*

Equipment Type for Ports and Local Area	Software Version	Date of Latest Update
INMARSAT-C GMDSS SYSTEM (SAILOR 6110)		
INM-C MESSAGE TERMINAL (SAILOR 6006)	1.03	
INM-C GMDSS TERMINAL (SAILOR 3027)	1.05	
INM-C PSU & CHARGER (SAILOR 6081)	1.00	

**Summary of National Maritime Safety Information Issued**

2016		2017		2018	
Total	Average Elapsed Time	Total	Average Elapsed Time	Total	Average Elapsed Time
170	<input type="text"/> Mins	196	<input type="text"/> Mins	202	<input type="text"/> Mins

**4. International SafetyNET Service**

Does your Administration broadcast MSI through the International SafetyNET Service? Yes

Is it Operational now? Yes If not indicate the expected date of operation

NAV/MET Area	Type of Information	Country	LES/LESO	Ocean Region/LES ID	MSI Coastal Warning Area <sup>(1)</sup> (if applicable)	Broadcast Schedule (UTC)	Status of Implementation
X / XIV	NAV <sup>(2)</sup>	AUSTRALIA / NZ	AUSSAGUEL	POR	N + D	0140, 1340	Operational
	MET <sup>(3)</sup>	**					
X / XIV	SAR <sup>(4)</sup>	AUSTRALIA / NZ	AUSSAGUEL	POR	N + D	As occasion demands	Operational

(1) Provide a diagram showing limits of Coastal Warning Areas, including B1 Codes

(2) NAV = Navigational Warnings

(3) MET = Meteorological Warnings

(4) SAR = Search and Rescue Alerts

\* - NAVAREA Coordinator responsible for the Area \*\* - The issuing service nominated by WMO for METAREA services, responsible for the area

**5. NAVTEX Coverage**

NIL

NAVTEX Coast Station	Frequency	Position of Antenna	Range (NM)	B1 Character	Transmission Times	Language

**6. HF Narrow Band Direct Printing (NBDP) MSI Broadcast Service**

Does your Administration broadcast MSI through HF NBDP?

No

Is it Operational now? No If not indicate the expected date of operation

Country	NBDP Coast Station	Position	Frequency Band	Schedule (UTC)	Status
			4MHz (4210KHz)		
			6MHz (6425KHz)		
			8MHz (8416.5KHz)		
			12MHz (12579KHz)		
			16MHz (16806.5KHz)		
			19MHz (19680.5KHz)		
			22MHz (22376 KHz)		
			26MHz (26100.5 KHz)		

**7. Does your Administration broadcast MSI through other means?**

Yes, we broadcast local navigational warnings by radio VHF 4 times a day.  
1900-2000 / 0000-0100 / 0500-0600 / 1000-1100 (all hours in UTC).

**8. Operational Issues**

NIL

**9. Contingency Planning**

NIL

**10. Capacity Building**

The VHF system will be increased from 16 antennas to 17 during the 2nd half of 2019 (Station Yaté - South of new caledonia)  
at the end, new caledonia with loyaulty's islands will be covered by 17 stations.

**11. Other Activities**

[Provide details on any other relevant activities, completed, underway or planned]

**12. National Maritime Website**

- MRCC Nouméa website: 'www.mrcc.nc'
- National Coordinator: 'www.shom.fr'

**13. Recommendations**

NIL

**14. Summary**

NIL

**15. Remarks/Additional Information**

NIL

**16. Attachments**

NIL

**National Maritime Safety Information  
(MSI) Self Assessment**

FIJI

Maritime Safety Authority of Fiji (MSAF)

**1. Maritime Area**

Fiji Coastal Navigational Warning area covers Fiji waters including 200 nautical miles exclusive economic zone (EEZ) of Fiji for broadcasting of navigational warnings via Coast Radio Station (CRS) on VHF/HF.

**2. Operational Points of Contact for the National Coordinator**

Institution/Organization	Telephone	Facsimile	Email
MSAF	+679 3315 266	+679 3313 127	skumar@msaf.com.fj
			msi@msaf.com.fj

**3. GMDSS Master Plan**

Is plan up to date? No

Date of last update;

**MSI - National Coordinator Procedures**

Do you have access to IMO/IHO/WMO Joint Manual on MSI? Yes

Do you follow the suggested warning format in Joint Manual? Yes

Have you or your staff received MSI Training? Yes

Are you aware of your NAVAREA Coordinator? Yes

Do you pass MSI to NAVAREA Coordinator? Yes

Do you request NAVAREA Coordinator broadcast MSI? Yes

[Remarks about MSI - National Coordinator Procedures]

MSI Broadcast Service					
NAVTEX	SafetyNET			HF NBDP	
	NAV	MET	SAR		
<input type="checkbox"/>	<input checked="" type="checkbox"/>	<input type="checkbox"/>	<input type="checkbox"/>	<input type="checkbox"/>	<input type="checkbox"/>

Complete Section 4

*Specifics of equipment used and software version with date updated*

Equipment Type for Ports and Local Area	Software Version	Date of Latest Update
Maritime VHF & HF Radio		

**Summary of National Maritime Safety Information Issued**

2016		2017		2018	
Total	Average Elapsed Time	Total	Average Elapsed Time	Total	Average Elapsed Time
70	<input type="text"/> Mins	70	<input type="text"/> Mins	64	<input type="text"/> Mins

**4. International SafetyNET Service**

Does your Administration broadcast MSI through the International SafetyNET Service? No

Is it Operational now? No If not indicate the expected date of operation

NAV/MET Area	Type of Information	Country	LES/LESO	Ocean Region/LES ID	MSI Coastal Warning Area <sup>(1)</sup> (if applicable)	Broadcast Schedule (UTC)	Status of Implementation
	NAV <sup>(2)</sup>	*					
	MET <sup>(3)</sup>	**					
	SAR <sup>(4)</sup>						

(1) Provide a diagram showing limits of Coastal Warning Areas, including B1 Codes (2) NAV = Navigational Warnings  
 (3) MET = Meteorological Warnings (4) SAR = Search and Rescue Alerts  
 \* - NAVAREA Coordinator responsible for the Area \*\* - The issuing service nominated by WMO for METAREA services, responsible for the area

**5. NAVTEX Coverage**

Fiji does not broadcast MSI via NAVTEX as this is not practiced in the SWP region.

NAVTEX Coast Station	Frequency	Position of Antenna	Range (NM)	B1 Character	Transmission Times	Language

**6. HF Narrow Band Direct Printing (NBDP) MSI Broadcast Service**

Does your Administration broadcast MSI through HF NBDP? No

Is it Operational now? No If not indicate the expected date of operation

Country	NBDP Coast Station	Position	Frequency Band	Schedule (UTC)	Status
			4MHz (4210KHz)		
			6MHz (6425KHz)		
			8MHz (8416.5KHz)		
			12MHz (12579KHz)		
			16MHz (16806.5KHz)		
			19MHz (19680.5KHz)		
			22MHz (22376 KHz)		
			26MHz (26100.5 KHz)		

**7. Does your Administration broadcast MSI through other means?**

MSAF as the competent authority disseminates MSI by e-mail in the first instance. MSI are also uploaded on the MSAF website.

Broadcasting is carried by CRS via VHF & HF daily at 0803, 1203, 1603 & 2003.

**8. Operational Issues**

Coverage for HF transmission is limited and inconsistent. HF equipment set used by CRS is obsolete. Current location of CRS is not conducive to good and consistent communication coverage. CRS is in urgent need of proper GMDSS equipment to fulfill its role. Plans are in progress to relocate the radio station from its current location to the new site including new GMDSS equipment.



#### **9. Contingency Planning**

MSI messages sent to the NAVAREA XIV Coordinator, RCCNZ by email. RCCNZ promulgates important messages as NAVAREA XIV Warnings on SafetyNET.

#### **10. Capacity Building**

MSAF along with the representatives of Fiji Navy Hydrographic Office have participated in the past MSI training courses in SWP region. Assistance is required for the continuation of this training.

#### **11. Other Activities**

MSAF maintains a register of 406 MHz EPIRBs that are coded with the Fiji country code 520. This serves as a record of EPIRBs installed on Fiji registered vessel and supports the Fiji Rescue Coordination Centre (RCC) for Search and Rescue (SAR) purposes.

#### **12. National Maritime Website**

[www.msaf.com.fj](http://www.msaf.com.fj)

#### **13. Recommendations**

It is strongly recommended that Capacity Building Fund provides assistance in dispatching necessary experts to Fiji for conducting a feasibility study for the provision of GMDSS equipments for broadcasting of MSI.

#### **14. Summary**

This self-assessment report highlights the MSI activities for the year 2018. Fiji is very actively involved in providing MSI services to the maritime industry locally including navy, port operators, primary hydrographic charting authorities for updating charts & publications.

#### **15. Remarks/Additional Information**

Average Elapsed Times mentioned in the Summary of National Maritime Safety Information Issued for the years 2016 to 2018 is approximately 45 minutes although they were not recorded.

#### **16. Attachments**

**National Maritime Safety Information  
(MSI) Self Assessment**

Cook Islands

Ministry of Transport

**1. Maritime Area**

RCC New Zealand covers the Cook Islands waters including the 200 nautical mile Exclusive Economic Zone (EEZ)

**2. Operational Points of Contact for the National Coordinator**

Institution/Organization	Telephone	Facsimile	Email
Ministry of Transport	+682 20321	+682 24321	saungaki.rasmussen@cookislands.gov.ck z

**3. GMDSS Master Plan**

Is plan up to date? No Date of last update;

**MSI - National Coordinator Procedures**

Do you have access to IMO/IHO/WMO Joint Manual on MSI? Yes

Do you follow the suggested warning format in Joint Manual? Yes

Have you or your staff received MSI Training? Yes

Are you aware of your NAVAREA Coordinator? Yes

Do you pass MSI to NAVAREA Coordinator? Yes

Do you request NAVAREA Coordinator broadcast MSI? Yes

[Remarks about MSI - National Coordinator Procedures]

MSI Broadcast Service						
NAVTEX	SafetyNET			HF NBDP		
	NAV	MET	SAR			
<input type="checkbox"/>	<input type="checkbox"/>	<input type="checkbox"/>	<input type="checkbox"/>	<input type="checkbox"/>		

*Specifics of equipment used and software version with date updated*

Equipment Type for Ports and Local Area	Software Version	Date of Latest Update

**Summary of National Maritime Safety Information Issued**

2016		2017		2018	
Total	Average Elapsed Time	Total	Average Elapsed Time	Total	Average Elapsed Time
0	Mins	0	Mins	2	Mins

**4. International SafetyNET Service**

Does your Administration broadcast MSI through the International SafetyNET Service? No

Is it Operational now? No If not indicate the expected date of operation

NAV/MET Area	Type of Information	Country	LES/LESO	Ocean Region/LES ID	MSI Coastal Warning Area <sup>(1)</sup> (if applicable)	Broadcast Schedule (UTC)	Status of Implementation
	NAV <sup>(2)</sup>	*					Non-Operational
	MET <sup>(3)</sup>	**					
	SAR <sup>(4)</sup>						Non-Operational

(1) Provide a diagram showing limits of Coastal Warning Areas, including B1 Codes

(2) NAV = Navigational Warnings

(3) MET = Meteorological Warnings

(4) SAR = Search and Rescue Alerts

\* - NAVAREA Coordinator responsible for the Area \*\* - The issuing service nominated by WMO for METAREA services, responsible for the area

**5. NAVTEX Coverage**

Cook Islands does not broadcast coastal warnings via NAVTEX.

NAVTEX Coast Station	Frequency	Position of Antenna	Range (NM)	B1 Character	Transmission Times	Language

**6. HF Narrow Band Direct Printing (NBDP) MSI Broadcast Service**

Does your Administration broadcast MSI through HF NBDP? No

Is it Operational now? No If not indicate the expected date of operation

Country	NBDP Coast Station	Position	Frequency Band	Schedule (UTC)	Status
			4MHz (4210KHz)		
			6MHz (6425KHz)		
			8MHz (8416.5KHz)		
			12MHz (12579KHz)		
			16MHz (16806.5KHz)		
			19MHz (19680.5KHz)		
			22MHz (22376 KHz)		
			26MHz (26100.5 KHz)		

**7. Does your Administration broadcast MSI through other means?**

Ministry of Transport, as the competent authority, disseminates MSI via email in the first instance. Broadcast is carried out by Bluesky HF radio via VHF and HF daily at 0815 and 2015. Navigational Warnings affecting SOLAS ships are sent to the NAVAREA XIV Coordinator.

**8. Operational Issues**

Receiving and transmitting becomes difficult the further you are away from the main islands. Sometimes you can't hear.

**9. Contingency Planning**

Navigational Warnings affecting SOLAS ships are sent to the NAVAREA XIV Coordinator.

**10. Capacity Building**

Ministry of Transport, as well as members of Cook Islands Hydrographic Office have participated in the past MSI training courses in SWP region. Assistance is required for the continuation of this training.

**11. Other Activities**

Ministry of Transport (MSI) helps and supports the Cook Islands Rescue Coordination Centre (RCC) for Search and Rescue (SAR) purposes.

**12. National Maritime Website**

[www.transport.gov.ck](http://www.transport.gov.ck)

**13. Recommendations**

It is strongly recommended that the Capacity Building Fund provides assistance in dispatching necessary experts to Cook Islands for conducting a feasibility study for the provision of GMDSS equipment for broadcasting of MSI under NZ guidance.

**14. Summary**

This self-assessment report highlights the MSI activities for the year 2018. Cook Islands is very actively involved in providing MSI services to the maritime industry locally including local operations and RCC New Zealand and LINZ.

**15. Remarks/Additional Information**

None

**16. Attachments**

--

**National Maritime Safety Information  
(MSI) Self Assessment**

FRANCE

JRCC TAHITI

**1. Maritime Area**

French Polynesian Area R is a defined area for the purpose of broadcasting Coastal Navigation Warnings via Inmarsat SafetyNET

The limits of the area are: 04-00S 149-00W to 04-00S 132-00W to 31-00S 132-00W to 31-00S 158-00W to 23-30S 156-00W to 17-00S 156-00W to 13-00S 158-00W to 13-00S 149-00W

**2. Operational Points of Contact for the National Coordinator**

Institution/Organization	Telephone	Facsimile	Email
JRCC TAHITI	+689 40541616	+689 40 42 39 15	contact@jrcc.pf

**3. GMDSS Master Plan**

Is plan up to date? Yes

Date of last update; July 2017

**MSI - National Coordinator Procedures**

Do you have access to IMO/IHO/WMO Joint Manual on MSI? Yes

Do you follow the suggested warning format in Joint Manual? Yes

Have you or your staff received MSI Training? Yes

Are you aware of your NAVAREA Coordinator? Yes

Do you pass MSI to NAVAREA Coordinator? Yes

Do you request NAVAREA Coordinator broadcast MSI? Yes

[Remarks about MSI - National Coordinator Procedures]

MSI Broadcast Service						
NAVTEX	SafetyNET			HF NBDP		
	NAV	MET	SAR			
<input type="checkbox"/>	<input checked="" type="checkbox"/>	<input type="checkbox"/>	<input checked="" type="checkbox"/>	<input type="checkbox"/>		

Complete Section 4

*Specifics of equipment used and software version with date updated*

Equipment Type for Ports and Local Area	Software Version	Date of Latest Update
Thrane & Thrane easyMail	V1.15	Build 0027

**Summary of National Maritime Safety Information Issued**

2016		2017		2018	
Total	Average Elapsed Time	Total	Average Elapsed Time	Total	Average Elapsed Time
22	<input type="text"/> Mins	36	<input type="text"/> Mins	37	<input type="text"/> Mins

**4. International SafetyNET Service**

Does your Administration broadcast MSI through the International SafetyNET Service? Yes

Is it Operational now? Yes  If not indicate the expected date of operation

NAV/MET Area	Type of Information	Country	LES/LESO	Ocean Region/LES ID	MSI Coastal Warning Area (if applicable)	Broadcast Schedule (UTC)	Status of Implementation
	NAV <sup>(2)</sup>	* NZ	Aussaguel at Y	POR	R	0250,1450	Operational
	MET <sup>(3)</sup>	**					
	SAR <sup>(4)</sup>	FR	Aussaguel	POR			Operational

(1) Provide a diagram showing limits of Coastal Warning Areas, including B1 Codes  
 (2) NAV = Navigational Warnings  
 (3) MET = Meteorological Warnings  
 (4) SAR = Search and Rescue Alerts  
 \* - NAVAREA Coordinator responsible for the Area \*\* - The issuing service nominated by WMO for METAREA services, responsible for the area

**5. NAVTEX Coverage**

French Polynesia does not broadcast coastal warnings via NAVTEX.

NAVTEX Coast Station	Frequency	Position of Antenna	Range (NM)	B1 Character	Transmission Times	Language

**6. HF Narrow Band Direct Printing (NBDP) MSI Broadcast Service**

Does your Administration broadcast MSI through HF NBDP? No

Is it Operational now?  If not indicate the expected date of operation

Country	NBDP Coast Station	Position	Frequency Band	Schedule (UTC)	Status
			4MHz (4210KHz)		
			6MHz (6425KHz)		
			8MHz (8416.5KHz)		
			12MHz (12579KHz)		
			16MHz (16806.5KHz)		
			19MHz (19680.5KHz)		
			22MHz (22376 KHz)		
			26MHz (26100.5 KHz)		

**7. Does your Administration broadcast MSI through other means?**

In addition to SafetyNET broadcasts; JRCC Tahiti also broadcast navigation warnings on VHF, MF and HF if necessary.

**8. Operational Issues**

None

**9. Contingency Planning**

**10. Capacity Building**

**11. Other Activities**

**12. National Maritime Website**

[www.jrcc.pf/infonaut](http://www.jrcc.pf/infonaut)

**13. Recommendations**

None

**14. Summary**

**15. Remarks/Additional Information**

**16. Attachments**

National Maritime Safety Information  
(MSI) Self Assessment

NIUE

Ministry of Infrastructure

1. Maritime Area

Niue's Coastal Navigational Warning area covers ~15 NM for broadcasting of navigational warnings via Niue's Marine Radio on VHF.

2. Operational Points of Contact for the National Coordinator

Institution/Organization	Telephone	Facsimile	Email
Department of Transport	+683 6983/ +683 4047		lynsey.talagi@mail.gov.nu

3. GMDSS Master Plan

Is plan up to date? No Date of last update;

MSI - National Coordinator Procedures

Do you have access to IMO/IHO/WMO Joint Manual on MSI? Yes

Do you follow the suggested warning format in Joint Manual? Yes

Have you or your staff received MSI Training? Yes

Are you aware of your NAVAREA Coordinator? Yes

Do you pass MSI to NAVAREA Coordinator? No

Do you request NAVAREA Coordinator broadcast MSI? No

The National MSI Coordinator has not received IHO-recognised MSI Training. Telecom Niue Ltd staff, who operate the marine radio, have had MSI training. No MSI to date has been sent to the NAVAREA Coordinator

MSI Broadcast Service					
NAVTEX	SafetyNET			HF NBDP	
	NAV	MET	SAR		
<input type="checkbox"/>	<input type="checkbox"/>	<input type="checkbox"/>	<input type="checkbox"/>	<input type="checkbox"/>	<input type="checkbox"/>

Specifics of equipment used and software version with date updated

Equipment Type for Ports and Local Area	Software Version	Date of Latest Update
Maritime VHF		

Summary of National Maritime Safety Information Issued

2016		2017		2018	
Total	Average Elapsed Time	Total	Average Elapsed Time	Total	Average Elapsed Time
0	<input type="text"/> Mins	0	<input type="text"/> Mins	0*	<input type="text"/> Mins



**4. International SafetyNET Service**

Does your Administration broadcast MSI through the International SafetyNET Service? No

Is it Operational now? If not indicate the expected date of operation

NAV/MET Area	Type of Information	Country	LES/LESO	Ocean Region/LES ID	MSI Coastal Warning Area <sup>(1)</sup> (if applicable)	Broadcast Schedule (UTC)	Status of Implementation
	NAV <sup>(2)</sup>	*					
	MET <sup>(3)</sup>	**					
	SAR <sup>(4)</sup>						

(1) Provide a diagram showing limits of Coastal Warning Areas, including B1 Codes  
 (2) NAV = Navigational Warnings  
 (3) MET = Meteorological Warnings  
 (4) SAR = Search and Rescue Alerts  
 \* - NAVAREA Coordinator responsible for the Area    \*\* - The issuing service nominated by WMO for METAREA services, responsible for the area

**5. NAVTEX Coverage**

Niue does not broadcast MSI via NAVTEX as this is not practiced in the SWP region.

NAVTEX Coast Station	Frequency	Position of Antenna	Range (NM)	B1 Character	Transmission Times	Language

**6. HF Narrow Band Direct Printing (NBDP) MSI Broadcast Service**

Does your Administration broadcast MSI through HF NBDP? No

Is it Operational now? If not indicate the expected date of operation

Country	NBDP Coast Station	Position	Frequency Band	Schedule (UTC)	Status
			4MHz (4210KHz)		
			6MHz (6425KHz)		
			8MHz (8416.5KHz)		
			12MHz (12579KHz)		
			16MHz (16806.5KHz)		
			19MHz (19680.5KHz)		
			22MHz (22376 KHz)		
			26MHz (26100.5 KHz)		

**7. Does your Administration broadcast MSI through other means?**

MSI broadcast via email to local stakeholders has been considered. Other options include tv and radio via the Broadcasting Corporation of Niue.

**8. Operational Issues**

No full VHF Ch 16 coverage around Niue, although anticipated in mid-2019.

**9. Contingency Planning**

MSI messages sent to the NAVAREA XIV Coordinator, RCCNZ by email to be promulgated.

**10. Capacity Building**

Staff from Telecom Niue Ltd have attended the regional MSI training in 2016 and 2018, however, they haven't shared information with stakeholders. The National MSI Coordinator has not attended an IHO-recognised MSI training, however, receives assistance from RCCNZ as required.

Assistance is required to run an in-country MSI training with local stakeholders.

**11. Other Activities**

The Department of Transport requests updates from RCCNZ of its register of 406 MHz EPIRBs that are coded to Niue. This includes vessels on the Niue Ship Registry. This is important for Search and Rescue purposes.

**12. National Maritime Website**

None

**13. Recommendations**

It is strongly recommended that Capacity Building Fund provides assistance to hold an in-country MSI training in 2019 with local stakeholders.

**14. Summary**

This self-assessment report highlights the MSI activities for the year 2018. Niue still needs to setup its processes for receiving information from stakeholders. The National MSI Coordinator provides LINZ with information to update charts.

**15. Remarks/Additional Information**

\* Although "0" was recorded for MSI issued in 2018, it should be noted that Niue communicated with the NAVAREA XIV Coordinator regarding possible MSI resulting from intended ATon maintenance, however no outage resulted from this maintenance.

Weather services are broadcast on local tv, radio and Facebook.

**16. Attachments**

**National Maritime Safety Information  
(MSI) Self Assessment  
Tuvalu**

**1. Maritime Area**

TUVALU Coastal Navigational Warning area covers  
Tuvalu waters including 200 nautical miles Exclusive  
Economic Zone (EEZ) of Tuvalu.

**2. Operational Points of Contact for the National Coordinator**

Institution/Organization	Telephone	Facsimile	Email
MCT	(688) 2054/55	NIL	lpanela@gmail.com Taco.pitoi@gmail.com

**3. GMDSS Master Plan**

Is plan up to date? No Date of last update;

**MSI - National Coordinator Procedures**

- Do you have access to IMO/IHO/WMO Joint Manual on MSI? Yes
- Do you follow the suggested warning format in Joint Manual? Yes
- Have you or your staff received MSI Training? Yes
- Are you aware of your NAVAREA Coordinator? Yes
- Do you pass MSI to NAVAREA Coordinator? Yes
- Do you request NAVAREA Coordinator broadcast MSI? Yes

MSI Broadcast Service						
NAVTEX	SafetyNET			HF NBDP		
	NAV	MET	SAR			
<input type="checkbox"/>	<input checked="" type="checkbox"/>	<input type="checkbox"/>	<input type="checkbox"/>	<input type="checkbox"/>	<input type="checkbox"/>	

*Specifics of equipment used and software version with date updated*

Equipment Type for Ports and Local Area	Software Version	Date of Latest Update

**Summary of National Maritime Safety Information Issued**

2016		2017		2018	
Total	Average Elapsed Time	Total	Average Elapsed Time	Total	Average Elapsed Time
0	Mins	0	Mins	1	Mins

**4. International SafetyNET Service**

Does your Administration broadcast MSI through the International SafetyNET Service? **No**

Is it Operational now? **No** If not indicate the expected date of operation

NAV/MET Area	Type of Information	Country	LES/LESO	Ocean Region/LES ID	MSI Coastal Warning Area <sup>(1)</sup> (if applicable)	Broadcast Schedule (UTC)	Status of Implementation
	NAV <sup>(2)</sup>	*					
	MET <sup>(3)</sup>	**					
	SAR <sup>(4)</sup>						

(1) Provide a diagram showing limits of Coastal Warning Areas, including B1 Codes

(2) NAV = Navigational Warnings

(3) MET = Meteorological Warnings

(4) SAR = Search and Rescue Alerts

\* - NAVAREA Coordinator responsible for the Area

\*\* - The issuing service nominated by WMO for METAREA services, responsible for the area

**5. NAVTEX Coverage**

Tuvalu does not broadcast MSI via NAVTEX as this is not practiced in the SWP region.

NAVTEX Coast Station	Frequency	Position of Antenna	Range (NM)	B1 Character	Transmission Times	Language

**6. HF Narrow Band Direct Printing (NBDP) MSI Broadcast Service**

Does your Administration broadcast MSI through HF NBDP? **No**

Is it Operational now? **No** If not indicate the expected date of operation

Country	NBDP Coast Station	Position	Frequency Band	Schedule (UTC)	Status
			4MHz (4210KHz)		
			6MHz (6425KHz)		
			8MHz (8416.5KHz)		
			12MHz (12579KHz)		
			16MHz (16806.5KHz)		
			19MHz (19680.5KHz)		
			22MHz (22376 KHz)		
			26MHz (26100.5 KHz)		

**7. Does your Administration broadcast MSI through other means?**

*No*

**8. Operational Issues**

*MTC is working with HRM to establish new position to work after the matters.*

**9. Contingency Planning**

MSI Message have to send by email to NAVAREA XIV Coordinator, RCCNZ.

**10. Capacity Building**

Tuvalu has attended previous SWPHC MSI courses.

**11. Other Activities**

Working with SPC on the Risk Assessment that took place 2018.

**12. National Maritime Website**

NIL

**13. Recommendations**

Hopefull that UK IHO will assist Tuvalu in updating old charters for the benefit of Local/Internati Vessels using our water

**14. Summary**

Tuvalu will continue to work with LINTZ and UK IHO and other relevant parties to provide

**15. Remarks/Additional Information**

NIL

H. notes and other interesting matter that can benefit Tuvalu with new activities 2018

**16. Attachments**