

MSI Self Assessment - NAVAREA XVII and XVIII

Submitted by: Canada

SUMMARY

Executive Summary: Synopsis of activities within NAVAREA XVII and XVIII since WWNSI

Action to be taken: Note report

Related documents: None

1. Background:

NAVAREA XVII boundary limits:

67° 00'.00N 168° 58'.00W,
90° 00'.00N 168° 58'.00W,
90° 00'.00N 120° 00'.00W,
south to the Canadian coastline along the 120°00'.00W meridian;

NAVAREA XVIII boundary limits:

A position on the Canadian coastline at the 120°00'.00W meridian to:
90° 00'.00N 120°00'.00W,
90° 00'.00N 035°00'.00W,
67° 00'.00N 035°00'.00W;

METAREA and NAVAREA messages transmission is made twice a day by means of HF Narrow Band Direct Printing (NBDP) on the 8 MHz (8416.5) MSI frequency for some arctic waters (Canadian Search and Rescue Region) that are not covered by the INMARSAT SafetyNet service.

Scheduled Broadcast Times	
NAVAREA	(UTC)
XVII (POR)	1130UTC and 2330UTC
XVIII (AOR-W)	1100UTC and 2300UTC
HF NBDP (NAVAREA & METAREA)	0330UTC and 1530UTC

2. Comments:

	2010*
NAVAREA XVII	31
NAVAREA XVIII	29

*Service began on July 1, 2010 on a test basis.

3. NAVTEX Coverage:

One NAVTEX station located at Iqaluit, Nunavut (63 43N 68 33W) is operational on a seasonal basis and it provides limited coverage in NAVAREA XVIII (see Figure 1). The Canadian Coast Guard has no plans to expand its NAVTEX coverage for arctic waters.

Denmark has plans to establish a NAVTEX station located at: Upernavik (72 47N 56 12W)(see Figure 2).

4. Operational Issues:

Nil

5. Quality Management Survey:

NAVAREA	ISO 9001 - 2000	Promulgate "In-Force" Bulletins	Promulgate "No-Warning" Messages	Monitor Broadcast in almost real time	24/7 contact information provided	Promulgate two scheduled broadcasts	IMO Master Plan updated
XVII and XVIII	NO	YES	YES	YES	YES	YES	NO

6. Contingency Planning:

NAVAREA XVII and XVIII are operational on test. Both NAVAREA are operated from a single location. Equipment is fully redundant and a business continuity plan is being developed. At this time consideration is being given to request assistance from NAVAREA IV and XII coordinator for times where NAVAREA desk would not be accessible to staff. Consideration is also being given to request assistance from METAREA XVII and XVIII for contingency purposes.

7. Capacity Building:

Training was provided to NAVAREA desk officers by NAVAREA IV and XII staff. No other training is being planned at this time.

8. Other Activities:

Nil

9. NAVAREA Website:

<http://www.ccg-gcc.gc.ca/e0004476?todo=warning> Website is updated within 24 hours of message issuing.

10. NAVAREA Contact Information:

NAVAREA XVII and XVIII

Mr. Michel Desparois
Manager, Marine Communications and Traffic Services (MCTS)
Canadian Coast Guard
Centennial Towers
200 Kent Street
Ottawa, Ontario K1A 0E6
Telephone: 613-990-3031
Facsimile: 613-996-8902
E-mail: michel.desparois@dfo-mpo.gc.ca

11. Recommendations:

Nil

12. Actions requested:

Note the information provided

13. Synopsis:

The NAVAREA XVII and XVIII Coordinator presented an overview of his self-assessment paper and noted that NAVAREA SafetyNet transmissions began on July 1, 2010 on a test basis. Transmissions are sent twice a day for each NAVAREA. A weekly in force message is also transmitted. NAVAREA messages are posted on the Canadian Coast Guard Website. He also stated that a business continuity plan is being developed and will be available in time for the beginning of the formal NAVAREA SafetyNet transmissions planned for June 2011. *Finally he noted that NAVAREA messages are also transmitted, on a test basis, by HF Narrow Band Direct Printing twice a day.*

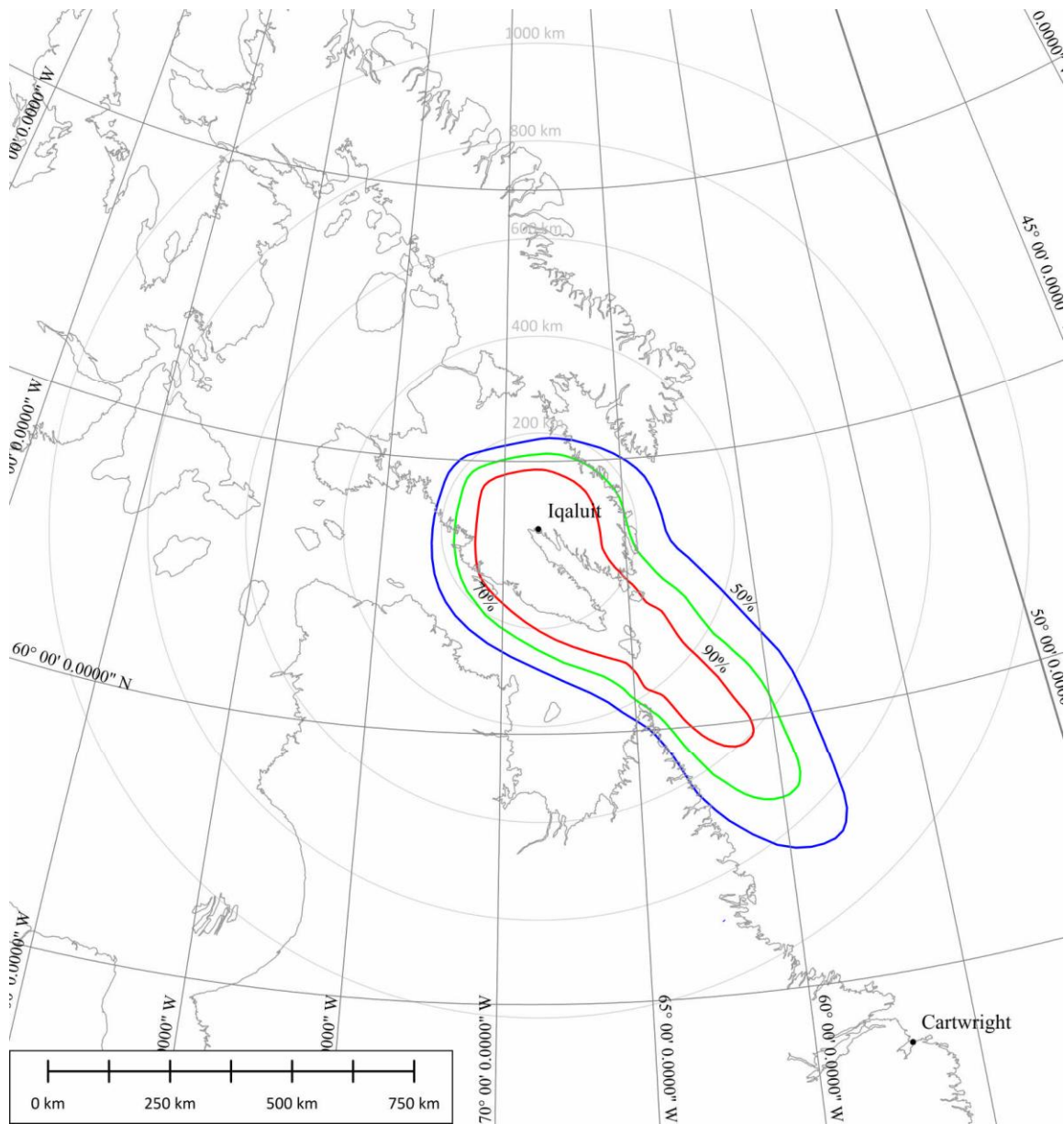
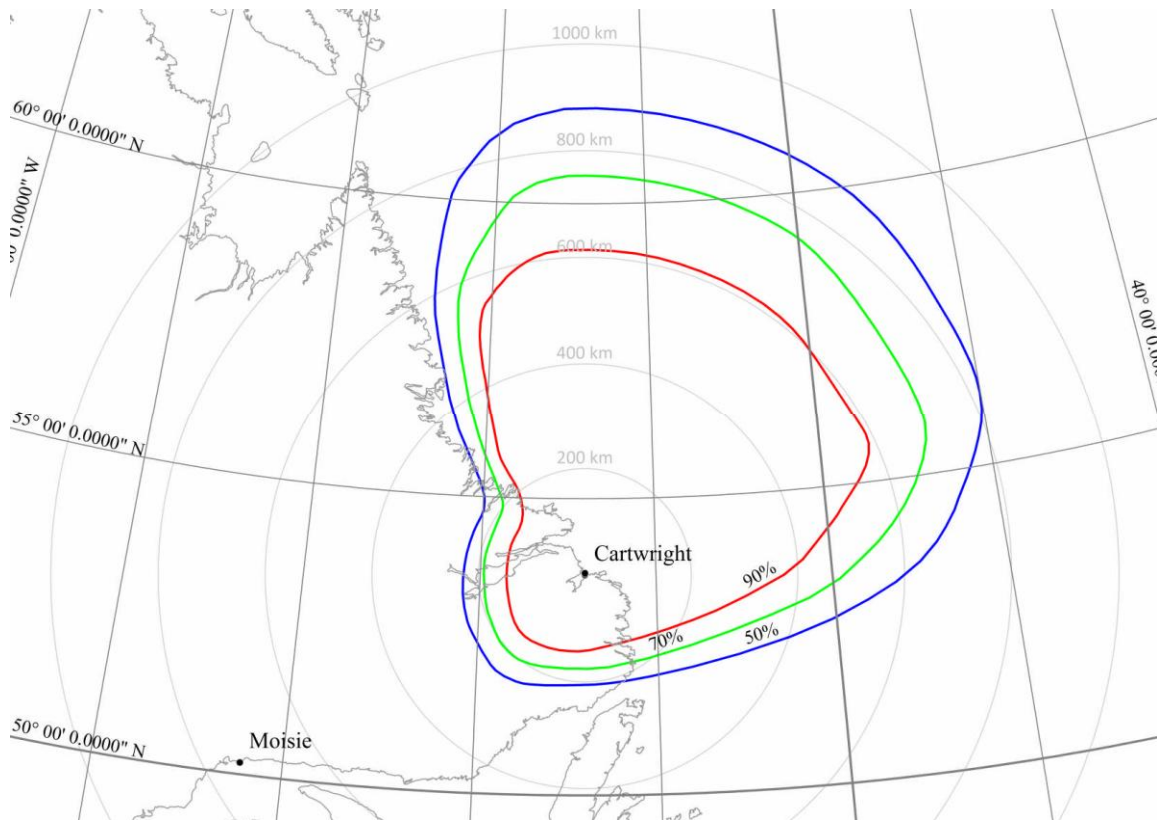


Figure 1



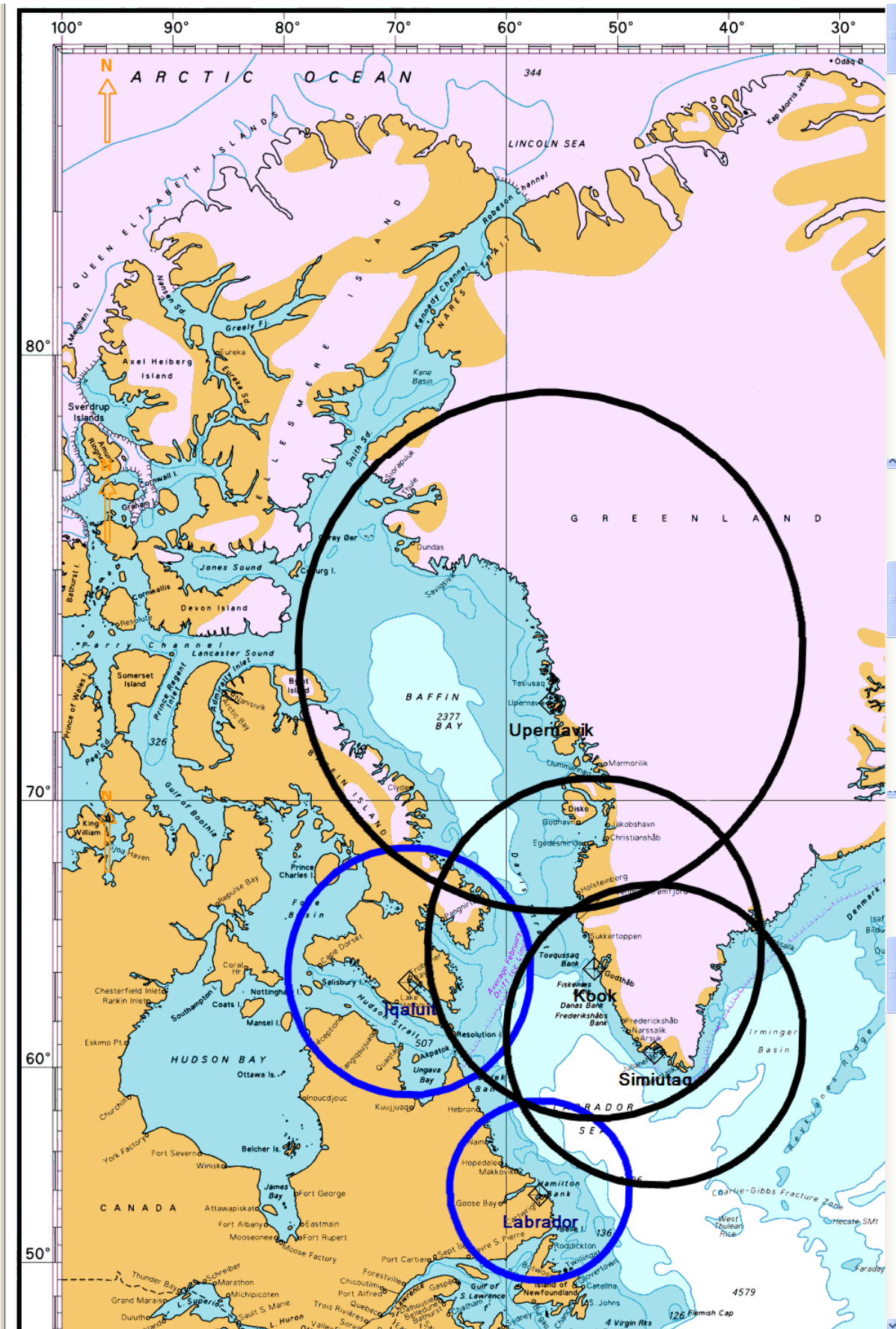


Figure 2