

MSI Self Assessment NAVAREA XIV

Submitted by New Zealand

SUMMARY

Executive Summary:	Overview of activities undertaken in NAVAREA XIV since WWNWS2
Action to be taken:	See section 12
Related documents:	None

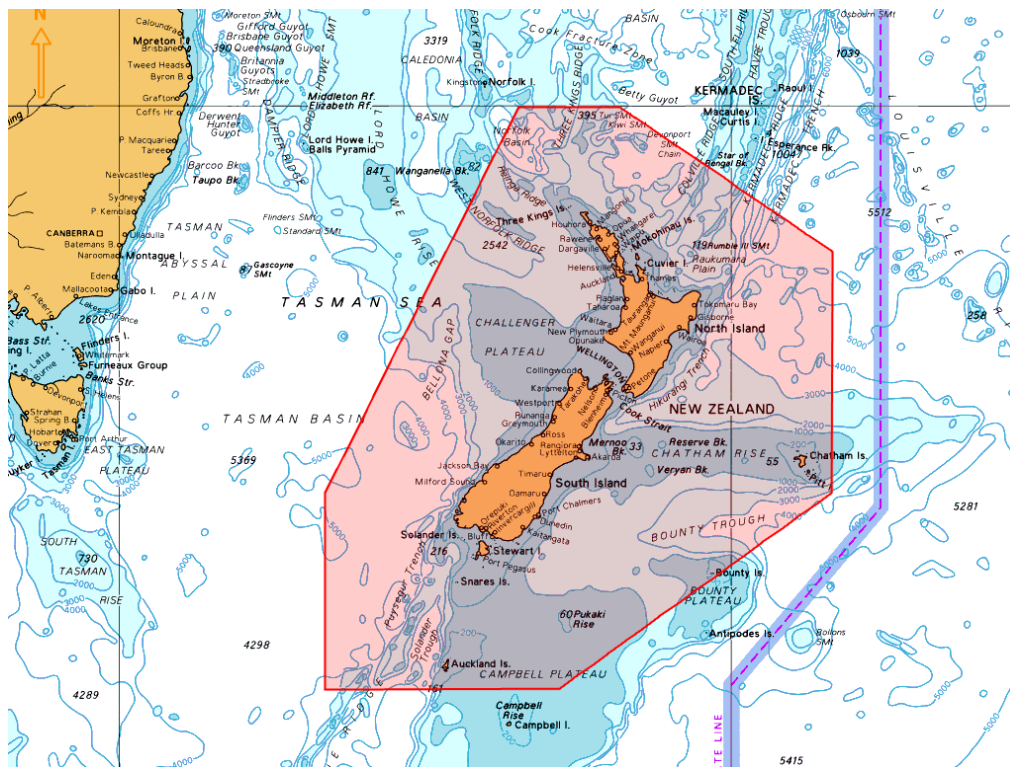
1. Background

The limits of NAVAREA XIV are given as:

00° 00'N, 120° 00'W to
73° 50'S, 120° 00'W (Antarctic coast) then
69° 37'S, 160° 00'E (Antarctic coast) to
45° 00'S, 160° 00'E to
29° 00'S, 170° 00'E to
00° 00'N, 170° 00'E



New Zealand Coastal Warning Area 'Z' is depicted below.



NAVAREA XIV and New Zealand Coastal Warnings are broadcast via:

Taupo Maritime Radio ZLM (Radio Telephony) at the first scheduled time following receipt and then at the scheduled times as per ALRS Vol 3(2), 2010 Edition whilst the warnings are in force or until they have been promulgated by other means; and

Inmarsat-C EGC SafetyNET system via the Pacific Ocean Region (POR) satellite through the Land Earth Station (LES) at Burum, Netherlands on receipt and as part of scheduled broadcasts 0900 and 2100UTC.

The warnings are broadcast and monitored by Taupo Maritime Radio through a Mobile Earth Station (MES). The Australian Maritime Safety Authority (AMSA) assists New Zealand in monitoring repeat EGC transmissions via an EGC supervisory system. Transmitted NAVAREA XIV and New Zealand Coastal Navigation Warnings are emailed to Taupo Maritime Radio, where the Coastal Warnings are checked, and NAVAREA XIV warnings are forwarded to the NAVAREA XIV Coordinator.

NAVAREA XIV National Coordinators

COUNTRY	TELEPHONE	FACSIMILE	E-MAIL
New Zealand	+64 45778030	+64 45778038	rccnz@maritimenz.govt.nz
Fiji	+679 3315 266	+679 3303 251	sunil.kumar@govnet.gov.fj
French Polynesia	+689 465 316	+689 423 915	mrccpapeete@mail.pf
Kingdom of Tonga	+676 24 696	+676 42 467	holokaukau@yahoo.com
Western Samoa	+685 21 611	+685 28688	kalolo@mwti.gov.ws
Cook Islands	+682 20 034	+682 21 134	v.mataora@moip.gov.ck
New Caledonia	+687 292 332	+687 292 303	mrcc.nc@lagoon.nc
Wallis & Futuna			mrcc.nc@lagoon.nc

2. Comments:

The GMDSS Master Plan is up to date as at 01 June 2011.

The following table shows the number of SafetyNET messages promulgated:

	2008	2009	2010	2011 (to July)
NAVAREA XIV	93	72	52	81
NEW ZEALAND COASTAL	131	89	88	180*

* The increase in warnings broadcast via SafetyNET is attributed to the changes in procedure as outlined below.

Since discussions at WWNWS2, New Zealand has implemented the following changes:

- Cancellation of New Zealand Coastal Warnings which are no longer valid are now promulgated (**Resolution A.706 Paragraph 6.6.1.8**), and the cancellation message given an individual number (**WWNWS2 Agenda Item 8.3**).
- NAVAREA XIV and New Zealand Coastal Warnings are included in scheduled SafetyNET broadcasts (**Resolution A.706 Paragraph 3.2.1.2**)
- 'No Warning' messages are promulgated to advise the mariner that there is no NAVAREA XIV or New Zealand Coastal Warning message traffic on hand. (**Resolution A.706 Paragraph 5.4.1**)
- 'In-Force' bulletins are promulgated for NAVAREA XIV and New Zealand Coastal Warnings not less than once per week at a regularly scheduled time. (**Resolution A.706 Paragraphs 6.2.1.9 and 6.6.1.7**)
- Letter designator allocated for the New Zealand Coastal Warning Area (**International SafetyNET Manual Paragraph 6.1 and 6.2**). New Zealand Coastal Navigation Warning SafetyNET broadcasts are now addressed to B₁ character 'Z'.

3. NAVTEX Coverage:

New Zealand does not broadcast coastal warnings via NAVTEX. The maritime areas around New Zealand have been designated GMDSS Sea Area A3. Given that ships are required to carry equipment appropriate to the area that they are sailing in, carriage of an Inmarsat-C MES is mandatory for SOLAS vessels. Coastal warnings are broadcast using SafetyNET.

4. Operational Issues:

Nil

5. Quality Management Survey

NAVAREA	ISO 9001 - 2008	Promulgate "In-Force" Bulletins	Promulgate "No-Warning" Messages	Monitor Broadcast in almost real time	24/7 contact information provided	Promulgate two scheduled broadcasts	IMO Master Plan updated
XIV	No	Yes	Yes	Yes	Yes	Yes	Yes

6. Contingency Planning

RCC New Zealand has comprehensive redundancy systems in place, and access to a remote Disaster Recovery site where the provision of WWNWS can continue.

There is an informal arrangement between the out-sourced marine communications centres in Canberra and Wellington. MOC also provides ad-hoc support for other national coordinators in NAVAREA XIV.

7. Capacity Building:

Following the conclusion of WWNWS2 in Sydney, Australia, New Zealand assisted with the South West Pacific Hydrographic Commission (SWPHC) MSI Course. Representatives from Fiji, French Polynesia, Kingdom of Tonga, Western Samoa, Cook Islands and New Caledonia participated.

8. Other Activities:

New Zealand and Australia undertook an IHO Technical visit to the Cook Islands, February 2011.

MNZ attended the COMSAR 15 at IMO Headquarters in London, UK in March 2011.

9. NAVAREA Website:

NAVAREA XIV warnings in-force are available on the Land Information New Zealand (LINZ) website <http://www.linz.govt.nz/hydro/nautical-info/navigation-area-14/index.aspx> and are reprinted in the fortnightly editions of the New Zealand Notices to Mariners which are available from the LINZ website <http://www.linz.govt.nz/hydro/ntms/index.aspx>.

10. NAVAREA Contact Information:

New Zealand Hydrographic Authority
Land Information New Zealand
Lambton House
160 Lambton Quay
Private Bag 5501
Wellington 6145
New Zealand

Telephone: +64 4 4600110 (Office hours Mon-Fri)
+64 21 2431577 (H24)
+64 27 6879536 (H24)
Fax: +64 4 4600161 (Office hours Mon-Fri)
E-mail: navareaxiv@linz.govt.nz
Website: <http://www.linz.govt.nz/hydro/nautical-info/navigation-area-14/index.aspx>

11. Recommendations:

None

12. Actions requested:

Note the information provided

13. Synopsis:

The NAVAREA XIV Co-ordinator presented an overview of their self-assessment paper, highlighting the MSI activities for the past year and changes in procedure to ensure compliance with Resolutions A705 and A706.