

MSI Self Assessment NAVAREA XIX

Submitted by Norway

SUMMARY

Executive Summary: Synopsis of activities within NAVAREA XIX since WWNWS 2

Action to be taken: Paragraph 12

Related documents: None

1. Background:

Limits of NAVAREA XIX:

From a position on the Norwegian coastland at 65° 00'.00N to:
65° 00'.00N, 005° 00'.00W,
75° 00'.00N, 005° 00'.00W, west to a position on the Greenland coastline;

From the border between Norway and Russia (Inland) to:
69° 47'.68N 030° 49'.16E,
69° 58'.48N 031° 06'.24E,
70° 22'.00N 031° 43'.00E,
71° 00'.00N 030° 00'.00E, further north along the 030° 00'.00E meridian to
90° 00'.00N 030° 00'.00E,
90° 00'.00N 035° 00'.00W, south to the Greenland coastline along the 035° 00'.00W meridian.

Norway declared NAVAREA XIX to be in “Full Operational Capability” (FOC) 1 June 2011 with broadcast on SafetyNet and HF NBDP.

The broadcasting of SafetyNET messages will be addressed to a rectangular area until Inmarsat-C or mini-C terminals operating in arctic waters have been updated.

Navigational Warnings regarding positions at or above 76°N will be broadcast both on SafetyNet and on High Frequency Direct-Printing Telegraph System (HF NBDP).

NAVAREA Warnings: 0630UTC and 1830UTC (AOR-E), (HF NBDP)

Satellite SafetyNet broadcast service provider: Marlink/ Vizada

HF NBDP service provider: Telenor Maritime Radio

Operational Points of Contact for National Co-ordinators within the NAVAREA

COUNTRY	TELEPHONE	FACSIMILE	EMAIL
Norway	+47 22422331	+47 22410491	navco@kystverket.no

2. Comments:

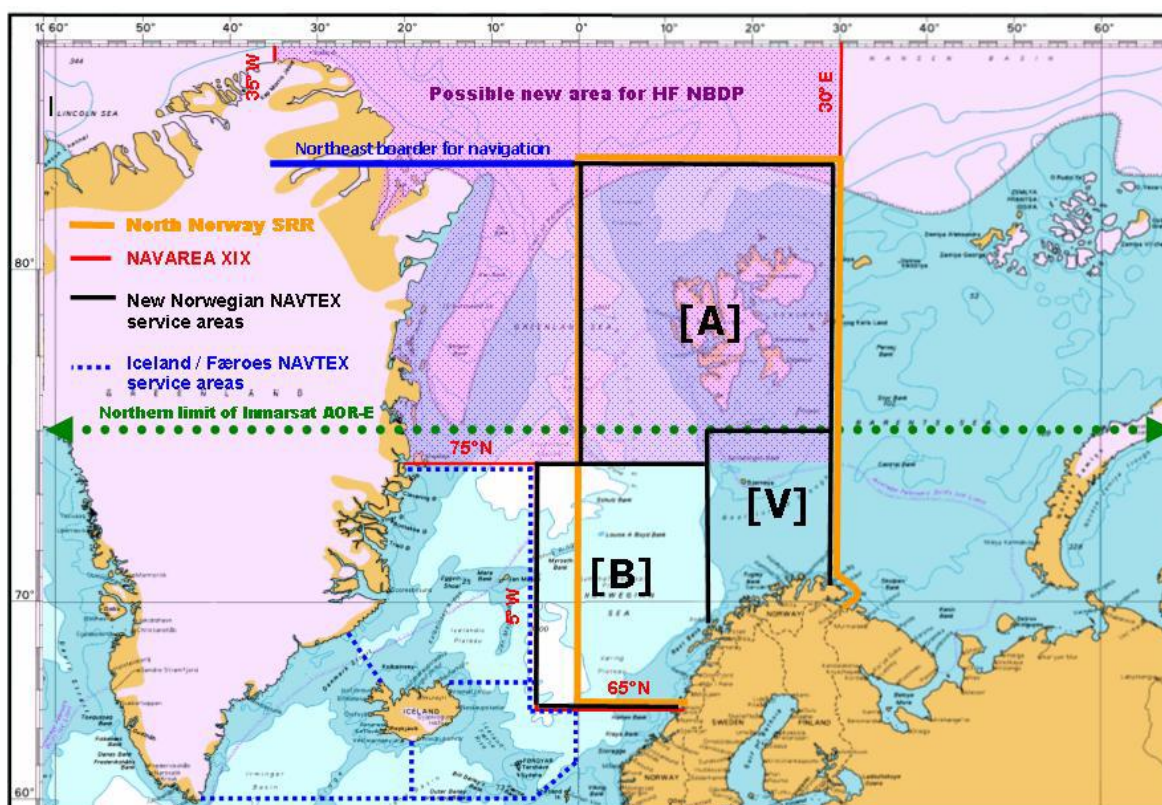
The GMDSS Master Plan is currently not up to date concerning NAVAREA XIX. The most recent updates were provided at COMSAR 15 March 2011 for GMDSS.1/Circ.13 dated 23 MAY 2011.

The following numbers of navigational warnings were promulgated via SafetyNet:

	2008	2009	2010
NAVAREA XIX	N/A	N/A	16 (IOC)

EGC SafetyNet and HF NBDP messages are constantly monitored from the NAVAREA XIX operations room.

3. NAVTEX Coverage:



NAVTEX Stations in NAVAREA XIX

B ₁	Station	Telephone	Fax	E-mail	Operational status
A	Svalbard	+47 75 52 89 25	+47 75 52 58 96	bodo.radio@telenor.com	Confirmed
B	Bodø	+47 75 52 89 25	+47 75 52 58 96	bodo.radio@telenor.com	Confirmed
V	Vardø	+47 75 52 89 25	+47 75 52 58 96	bodo.radio@telenor.com	Confirmed

4. Operational Issues:

Number of messages issued by SafetyNet 2010: 16

Number of messages issued by HF NBDP 2010: 16

5. Quality Management Survey

NAVAREA	ISO 9001 - 2008	Promulgate "In-Force" Bulletins	Promulgate "No-Warning" Messages	Monitor Broadcast in almost real time	24/7 contact information provided	Promulgate two scheduled broadcasts	IMO Master Plan updated
XIX	NO	YES	YES	YES	YES	YES	NO

6. Contingency Planning

Procedures and systems are established to operate in an emergency from other locations than the NAVAREA XIX operations room. During 2010 NAVAREA XIX has been operated from several different locations in Norway.

7. Capacity Building:

National MSI/ On-the-Job training courses held in connection with the transition to "Full Operational Capability" (FOC).

8. Other Activities:

None.

9. NAVAREA Website:

NAVAREA XIX warnings in force: <http://www.navarea-xix.no/>

The website is currently updated on weekdays during office hours. The date and time of the last update is displayed on the web site.

10. NAVAREA Contact Information:

24/7 NAVAREA XIX – NORWAY

Vardø VTS Centre

Telephone: +47 78 94 30 00

Facsimile: +47 78 98 98 99

Email: navarea19@kystverket.no

Web: www.navarea-xix.no

11. Recommendations:

None.

12. Actions requested:

The Sub-Committee is invited to note the report.

13. Synopsis:

NAVAREA XIX introduced the Self-Assessment Report. “Full Operational Capability” (FOC) was declared 1 Jun 2011 with broadcast on SafetyNet and HF NBDP.