

MSI Self Assessment NAVAREA XX and XXI

Submitted by Russian Federation (Federal State Unitary Hydrographic Department)

SUMMARY

Executive Summary: Synopsis of activities within NAVAREA XX and XXI since WWNWS 2

Action to be taken: Paragraph 12

Related documents: None

1. Background:

NAVAREA XX limits:

From the border between Norway and Russia (Inland) to:

69° 47'.68N 030° 49'.16E,

69° 58'.48N 031° 06'.24E,

70° 22'.00N 031° 43'.00E,

71° 00'.00N 030° 00'.00E, further north along the 030° 00'.00E meridian to

90° 00'.00N 030° 00'.00E,

90° 00'.00N 125° 00'.00E, then south along the 125° 00'.00E meridian to the Russian Federation coastline.

NAVAREA XXI limits:

From a position on the Russian Federation coastline at 125°00'E to:

90°00'N 125°00'E

90°00'N 168°58'W, further south along the 168°58'W meridian to

67°00'N 168°58'W, then west along the 67°00'N parallel to

the Russian Federation coastline.

The Russian Federation declared NAVAREA XX and XXI to be in “Initial Operational Capability” (IOC) 1 July 2010 with broadcasts on SafetyNet via Inmarsat IOR and POR satellites (IOR satellite for NAVAREA XX, POR satellite for NAVAREA XXI) and via transmission on HF NBDP. The service is expected to be transitioned to “Full Operational Capability” (FOC) on 1 June 2011. During the IOC period, the Federal State unitary Hydrographic Department will be providing a navigational warning service on an intermittent and test basis.

Navigational and coastal warnings for areas that not covered by Inmarsat SafetyNet service and Navtex (Tiksi) transmissions will be promulgated via HF Narrow Band Direct Printing (NBDP).
Navigational Warnings for NAVAREA XX: 0530UTC and 1730UTC (IOR), HF (NBDP).
Navigational Warnings for NAVAREA XXI: 0630UTC and 1830UTC (POR), HF (NBDP).
Satellite SafetyNet broadcasts service provider:Nudol(Russia)

Operational Points of Contact for National Co-ordinators within the NAVAREA XX and XXI

COUNTRY	TELEPHONE	FACSIMILE	EMAIL
The Russian Federation	+7 812 570 34 66	+7 812 570 34 66	ibm@hydrograph.spb.su

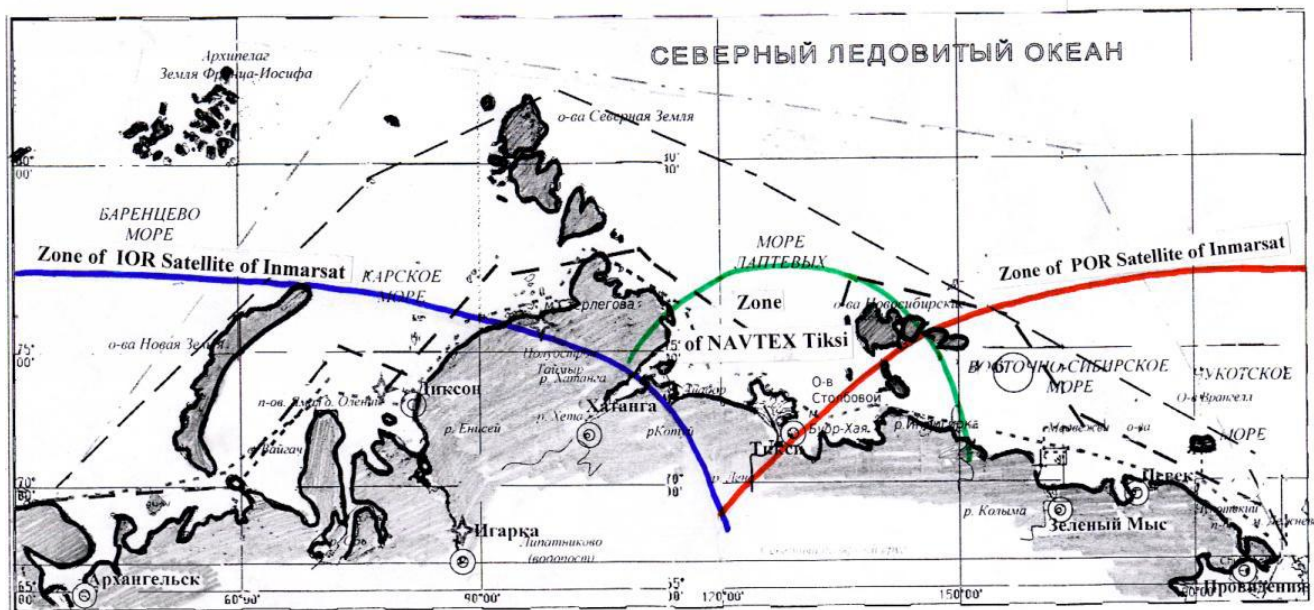
2. Comments:

NIL

3. NAVTEX Coverage:

One NAVTEX station located in Tiksi (71° 38' N, 128° 50' E) is operational on a seasonal basis and it provides limited coverage in NAVAREA XX and XXI (see Figure 1).

Graph of operational zones in NAVAREA's XX and XXI



4. Operational Issues:

NIL

5. Quality Management Survey

NAVAREA	ISO 9001 -2000	Promulgate "In-Force" Bulletins	Promulgate "No-Warning" Messages	Monitor Broadcast in almost real time	24/7 contact information provided	Promulgate two scheduled broadcasts	IMO Master Plan updated
XX and XXI	No	Yes	Yes	Yes	Yes	Yes	Yes

6. Capacity Building:

NIL

7. Capacity Building:

NIL

8. Other Activities:

NIL

9. NAVAREA Website

NIL

10. NAVAREA Contact Information:

NAVAREA XX and XXI
The Russian Federation
Chief of MSI Division
Federal State Unitary Hydrographic Department
Moskovsky pr. 12, St. Petersburg,
190031 Russian
Phone: +7 812 570 34 66
Fax: +7 812 570 34 66
E-mail: libm@hydrograph.spb.su

11. Recommendations:

NIL

12. Actions requested:

The Sub-Committee is invited to note the report.

13. Synopsis:

NAVAREA XX and XXI introduced the Self-Assessment Report. “Initial Operational Capability” (IOC) was declared 1 July 2010 with broadcasts on SafetyNet and HF NBDP. The service has passed to “Full Operational Capability” (FOC) on 1 June 2011.