

## MSI Self Assessment NAVAREA I

Submitted by United Kingdom

### SUMMARY

Executive Summary: Overview of activities undertaken within NAVAREA I since WWNWS 3

Action to be taken: Paragraph 12

Related documents: None

### 1. Background:

NAVAREA I comprises of the waters of the NE Atlantic, including the North Sea and the area around Iceland.

Limits of NAVAREA I:

48° 27'N, 004° 46'W (France West coastline) to  
48° 27'N, 035° 00'W to  
66° 30'N, 035° 00'W (Greenland South East coastline)  
and  
65° 00'.00N, 011° 40'.00E (Norwegian Coastline) to  
65° 00'.00N, 005° 00'.00W to  
75° 00'.00N, 005° 00'.00W to  
75° 00'.00N, 017° 30'.00W (Greenland East coastline)

NAVAREA Warnings: 0530 and 1730 (AOR-E)

Meteorological Information: 0930 and 2130 (AOR-E)

(AOR-W) Warnings only

SafetyNET Satellite broadcast service provider: Stratos

NAVAREA I has a Sub-Area defined as the Baltic Sea and its approaches which is totally autonomous in its operation of promulgating Navigational Warnings via NAVTEX.

Operational Points of Contact for National Co-ordinators within the NAVAREA

COUNTRY	TELEPHONE	FACSIMILE	EMAIL
Belgium	+32 50 558241	+32 50 558748	rmd@mil.be
Denmark	+45 89433211	+45 89433230	mas@sok.dk
Faeroe Islands	+298 351302	+298 351301	mrcc@mrcc.fo
France	+33 2 98221667	+33 2 98221432	coord.navarea2@shom.fr
Germany	+49 4927 1877283	+49 4927 1877288	seewarndienst.wsa-emd@t-online.de
Iceland	+354 5452120	+354 5452147	sjomis@lhg.is

Ireland	+353 16620922	+353 16620795	mrccdublin@irishcoastguard.ie
Netherlands	+31 2 23542300	+31 2 23658358	ccc@kustwacht.nl
Norway	+47 22422331	+47 22410491	navco@kystverket.no
United Kingdom	+44 1823 353448	+44 1823 322352	navwarnings@btconnect.com

## 2. Comments:

The GMDSS Master Plan is due to be updated shortly for all MSI entries in ANNEXES 7 and 8 concerning NAVAREA I. The most recent updates were provided for GMDSS.1/Circ.13 at COMSAR 16 March 2012.

### SafetyNET

NAVAREA I Warnings are broadcast on SafetyNET through the AOR(E) satellite as well as NAVTEX when appropriate.

The following table shows the number of SafetyNET navigational warning messages (including weekly bulletins) that were promulgated:

	2009	2010	2011
NAVAREA I	359	370	332

EGC SafetyNET messages for the entire AOR-E footprint are constantly monitored via a MES in the NAVAREA I operations room.

The Baltic Sea is run as a Sub-Area with Sweden (BALTICO) as the Co-ordinator.

## 3. NAVTEX Coverage:

Coastal Warnings for all National Co-ordinators in NAVAREA I are promulgated on NAVTEX.

Over the past year several changes to NAVTEX Service Areas within NAVAREA I have taken place. This has included a new station becoming operational in southern Norway and changes to B<sub>1</sub> transmitter identification characters.

The diagram at ANNEX A shows NAVTEX Service Areas for the International NAVTEX Service within NAVAREA I.

### NAVTEX Stations in NAVAREA I

<b>B<sub>1</sub></b>	<b>NAVTEX Station</b>	<b>Telephone</b>	<b>Fax</b>	<b>E-mail</b>	<b>Conf'd</b>
A	Corsen, France	+33 2 98221667	+33 2 98221432	coord.navarea2@shom.fr	✓
D	Torshaven, Faeroes	+298 312965	+298 315546	telegramm@mrcc.fo	✓
E	Niton, UK	+44 1326 317575	+44 1326 315610	falmouthcoastguard@mcga.gov.uk	✓
G	Cullercoates, UK	+44 1326 317575	+44 1326 315610	falmouthcoastguard@mcga.gov.uk	✓
H	Bjuroklubb, Sweden	+46 11 191045	+46 11238945	msi@sjofartsverket.se	✓
I	Grimeton, Sweden	+46 11 191045	+46 11238945	msi@sjofartsverket.se	✓
J	Gislovshammer, Sweden	+46 11 191045	+46 11238945	msi@sjofartsverket.se	✓
K	Niton, UK (for France)	+44 1326 317575	+44 1326 315610	falmouthcoastguard@mcga.gov.uk	✓
L	Rogaland, Norway	+47 51690044	+47 51683620	rogaland.radio@telenor.com	✓
M	Jeloya, Norway	+47 51690044	+47 51683620	rogaland.radio@telenor.com	✓
N	Orlandet, Norway	+47 51690044	+47 51683620	rogaland.radio@telenor.com	✓
O	Portpatrick, UK	+44 1326 317575	+44 1326 315610	falmouthcoastguard@mcga.gov.uk	✓
P	Den Helder, Netherlands	+31 223 542300	+31 223 658358	ccc@kustwacht.nl	✓
Q	Malin Head, Ireland	+35 374 9370103	+35 374 9370221	mrscmalin@irishcoastguard.ie	✓
R	Saudanes, Iceland	+354 5452100	+354 5452001	reyrad@lhg.is	✓
S	Pinneberg, Germany	+49 69 8062 6160	+49 69 8062 6103	ncc.navtex@dwd.de	✓
T	Oostende, Belgium	+32 50 558241	+32 50 558748	rmd@mil.be	✓
U	Tallinn, Estonia	+372 6991170	+372 699 1171	tallinnradio@riks.ee	✓
V	Oostende, Belgium (for UK)	+32 50 558241	+32 50 558748	rmd@mil.be	✓
W	Valentia, Ireland	+353 66 9476109	+353 66 9476289	mrscvalentia@dtas.ie	✓
X	Grindavik, Iceland	+354 5452100	+354 5452001	reyrad@lhg.is	✓

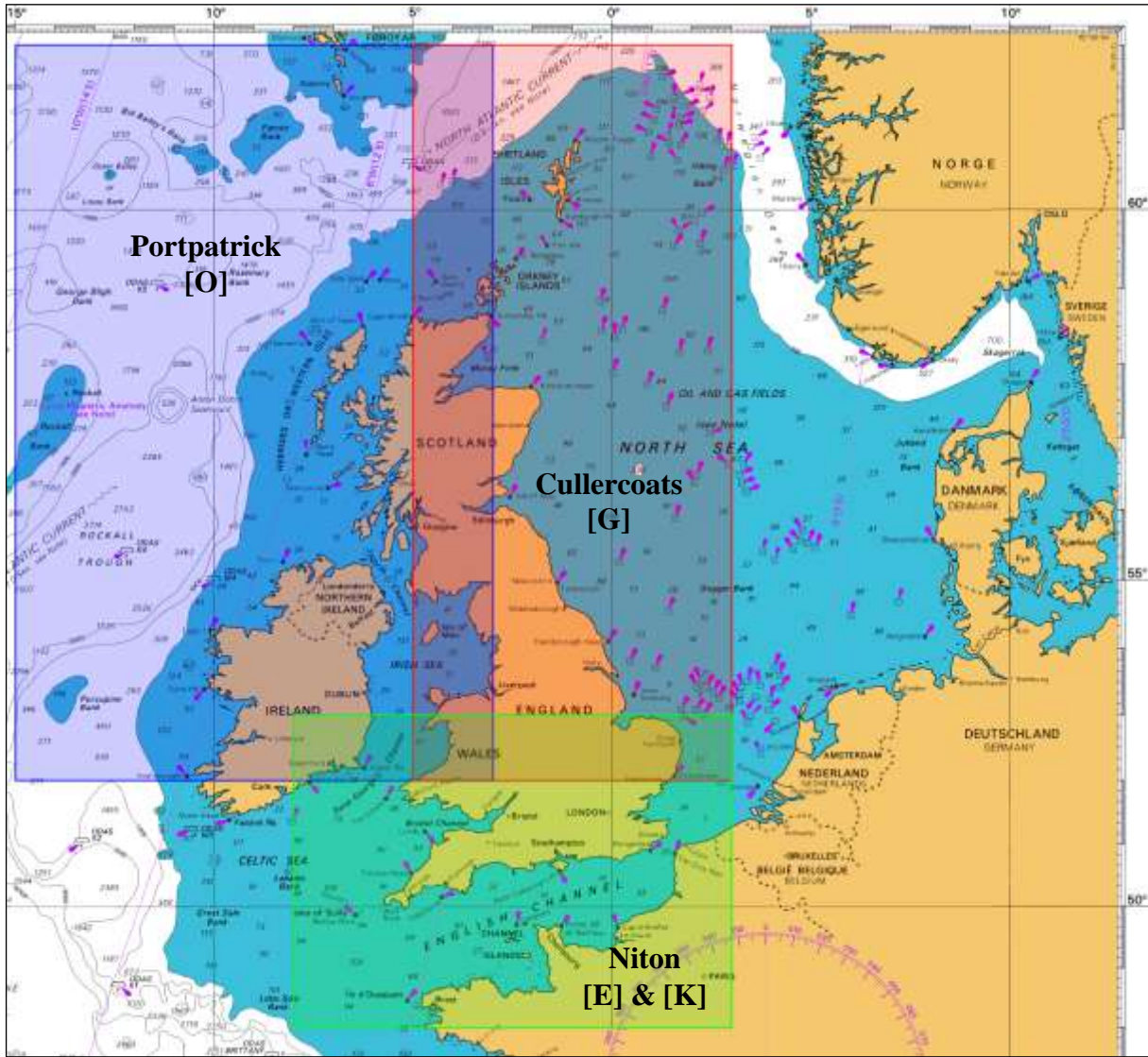
#### 4. Operational Issues:

4.1 Changes to the NAVTEX Service Areas covered above.

4.2 The report of WWNWS3 (items 2.1 & 4.2) included details on the discussions regarding the methods used by NAVAREA Co-ordinators to ensure that warnings which remain in-force after 42 days, but are no longer being transmitted, are made available to mariners and concluded that Co-ordinators would like to see more guidance on how to deal with this situation. As a result of those discussions, NAVAREA I instigated the inclusion of the following note at the end of the In-Force Bulletin each week:

“The complete text of all in-force NAVAREA I warnings, including those which are no longer being broadcast, are available from the UKHO website at: [www.ukho.gov.uk/RNW](http://www.ukho.gov.uk/RNW). Alternatively, these may be requested by e-mail from NAVAREA I Co-ordinator at: [navwarnings@btconnect.com](mailto:navwarnings@btconnect.com).”

4.3 United Kingdom lost the ability to transmit NAVTEX broadcasts a number of times throughout the reporting period and as a result a system of transmitting their Coastal Warnings on SafetyNET using rectangular areas was devised. The diagram below shows how this was implemented.



**5. Quality Management Survey:**

NAVAREA	ISO 9001 - 2008	Promulgate "In-Force" Bulletins	Promulgate "No-Warning" Messages	Monitor Broadcast in almost real time	24/7 contact information provided	Promulgate two scheduled broadcasts	IMO Master Plan updated
I	YES	YES	YES	YES	YES	YES	YES

**6. Contingency Planning:**

Established procedures to operate in an emergency from another building on site with total dual functionality, along with a remote location 30 miles away have continued to be successfully tested and operated throughout the year.

**7. Capacity Building:**

Since WWNWS3, NAVAREA I has not contributed to the IHO Capacity Building Programme MSI training courses but remains ready to provide a trainer as required.

## **8. Other Activities:**

NAVAREA I has continued to provide the Secretary for the IHO MSI Document Review Working Group. In June 2012, the NAVAREA Co-ordinator attended BALTICO 2012 meeting held in Klaipeda (Lithuania) and was invited to Chair the meeting, see NAVAREA I Sub-area Self Assessment for more details .

## **9. NAVAREA Website:**

**Address:** <http://www.ukho.gov.uk/rnw>

All NAVAREA and Coastal warnings are uploaded as soon as possible following the dissemination via established GMDSS methods.

The Website refreshes every 30 minutes.

The DTG of every amendment to the Website (including deletions) is displayed on the page.

Average hits per week are currently 1000.

## **10. NAVAREA Contact Information: (No Change)**

United Kingdom National Hydrographer

United Kingdom Hydrographic Office

Admiralty Way

TAUNTON

Somerset TA1 2DN

England

Tel.: +44 1823 353 448

Fax: +44 1823 322 352

E-mail: [navwarnings@btconnect.com](mailto:navwarnings@btconnect.com)

Website: <http://www.ukho.gov.uk/rnw>

## **11. Recommendations:**

All those NAVAREA Co-ordinators who do not currently include a statement in their weekly In-Force Bulletin as to where mariners can obtain the fully content of NAVAREA Warnings which are still in-force, but no longer being broadcast, should consider inserting a note along the lines of the example contained in para 4.2 of this self assessment.

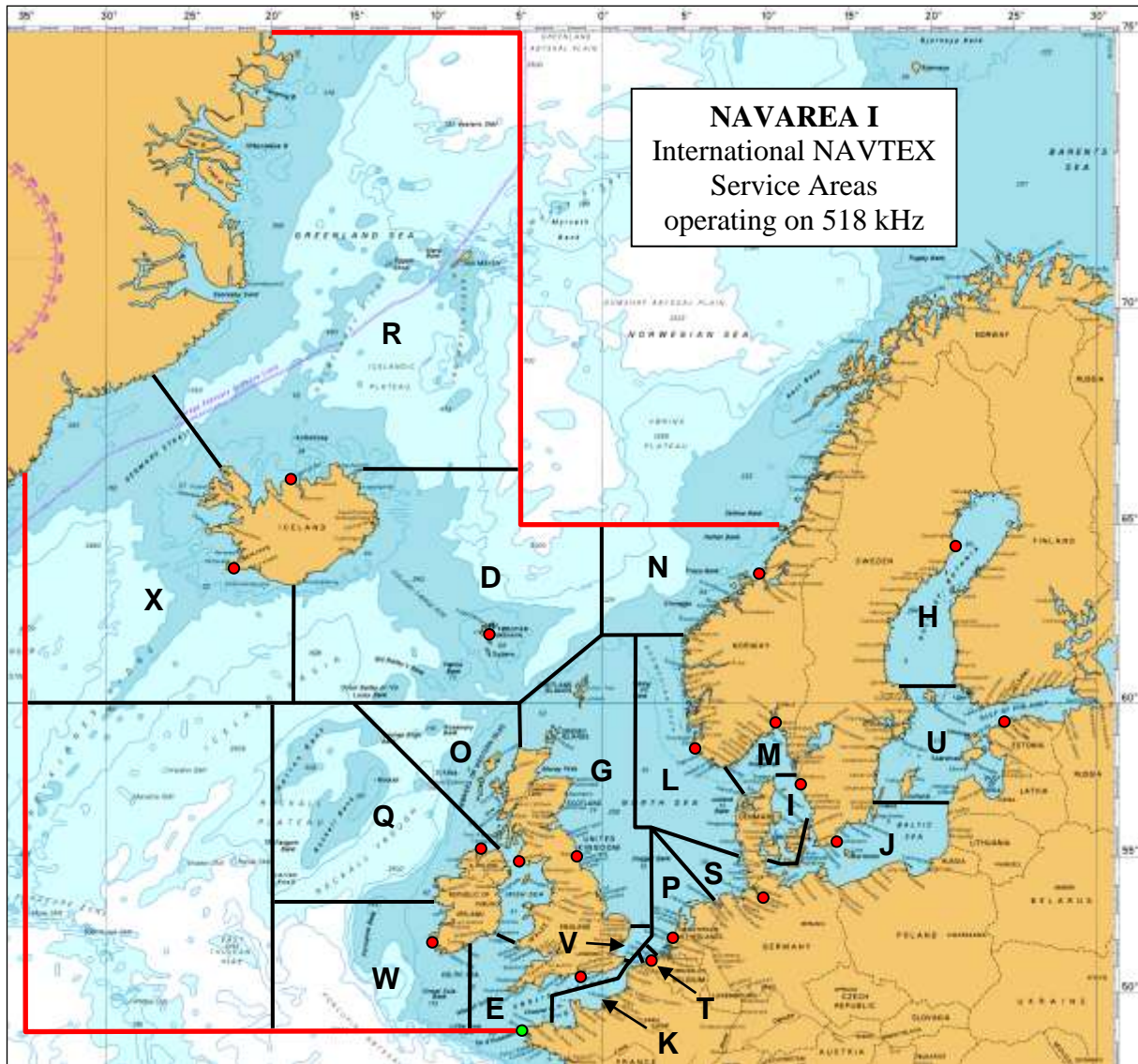
## **12. Actions requested:**

The Sub-Committee is invited to note the report.

## **13. Synopsis:**

The NAVAREA I Co-ordinator introduced the Self-Assessment Report covering the period since WNWNS3. The key operational issue addressed during the last year was the introduction of a new Norwegian NAVTEX station in the Skagerrak and consequential changes to B<sub>1</sub> Transmitter Identification Characters.

## ANNEX A



### B1 Transmitter Identification Characters

A Corsen, France	I Grimeton, Sweden	Q Malin Head, Ireland
B <b>SPARE</b>	J Gislovshammar, Sweden	R Saudanes, Iceland
C <b>SPARE</b>	K Niton, UK <b>for France</b>	S Pinneberg, Germany
D Torshaven, Faeroes	L Rogaland, Norway	T Oostende, Belgium
E Niton, UK	M Jeloya, Norway	U Tallinn, Estonia
F <b>SPARE</b>	N Orlandet, Norway	V Oostende, Belgium <b>for UK</b>
G Cullercoats, UK	O Portpatrick, UK	W Valentia, Ireland
H Bjuroklub, Sweden	P Schveningen, Netherlands	X Grindavik, Iceland