

### MSI Self Assessment NAVAREA XIX

Submitted by Norway

#### SUMMARY

Executive Summary: Synopsis of activities within NAVAREA XIX since WWNWS 5

Action to be taken: Paragraph 12

Related documents: None

#### 1. Background:

##### Limits of NAVAREA XIX:

From a position on the Norwegian coastland at 65° 00'.00N to:

65° 00'.00N, 005° 00'.00W,

75° 00'.00N, 005° 00'.00W, west to a position on the Greenland coastline;

From the border between Norway and Russia (Inland) to:

69° 47'.68N 030° 49'.16E,

69° 58'.48N 031° 06'.24E,

70° 22'.00N 031° 43'.00E,

71° 00'.00N 030° 00'.00E, further north along the 030° 00'.00E meridian to

90° 00'.00N 030° 00'.00E,

90° 00'.00N 035° 00'.00W, south to the Greenland coastline along the 035° 00'.00W meridian.

The broadcasting of SafetyNET messages will be addressed to a rectangular area until Inmarsat-C or mini-C terminals operating in arctic waters have been updated.

Navigational Warnings regarding positions at or above 76°N will be broadcast both on SafetyNet and on High Frequency Direct-Printing Telegraph System (HF NBDP).

NAVAREA Warnings: 0630UTC and 1830UTC (AOR-E), (HF NBDP)

Satellite SafetyNet broadcast service provider: Marlink/ Vizada

HF NBDP service provider: Telenor Maritime Radio

Operational Points of Contact for National Co-ordinators within the NAVAREA

COUNTRY	TELEPHONE	FACSIMILE	EMAIL
Norway	+47 22422331	+47 22410491	navco@kystverket.no

2. Comments:

The GMDSS Master Plan is currently not up to date concerning NAVAREA XIX. The most recent updates were provided in time for NCSR 1.

The following table shows equipment installed with NAVAREA XIX operations room:

Equipment Type	Software Version	Date of Up-date
Sailor TT-3026D/S/M maritim mini c	Easymail v1.16	-

The following table shows specifics of information and data received:

2011				2012				2013			
E-mail	Fax	Phone	Text	E-mail	Fax	Phone	Text	E-mail	Fax	Phone	Text
N/A	N/A	N/A	N/A	N/A	N/A	N/A	N/A	334	N/A	315	N/A

The following numbers of navigational warnings were promulgated via SafetyNet:

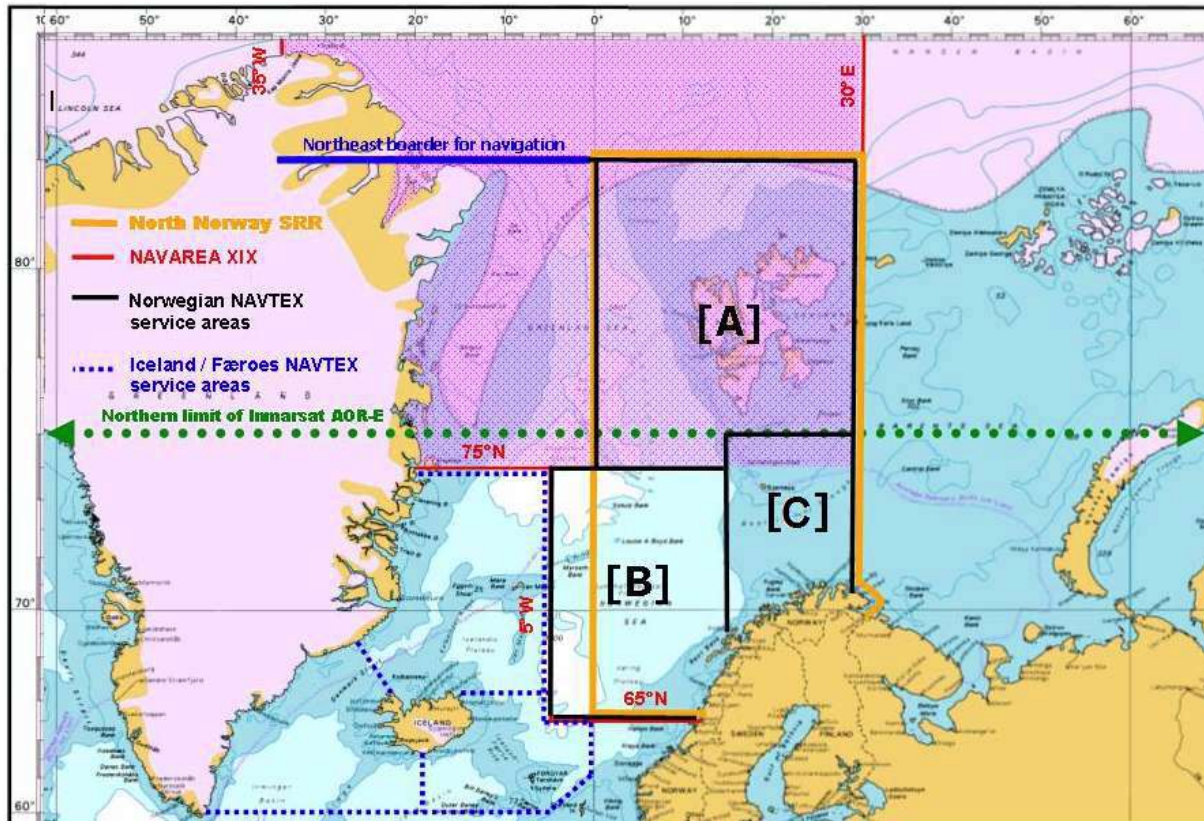
	2011*	2012	2013
<b>NAVAREA XIX</b>	95	146	126

Norway declared NAVAREA XIX to be in "Full Operational Capability" (FOC) 1 June 2011.

The following table shows details of the numbers of NAVAREA warnings identified as immediate priority (requiring transmission within 30 minutes) and the average elapsed time per broadcast via SafetyNET:

2011		2012		2013	
Total	Average elapsed time	Total	Average elapsed time	Total	Average elapsed time
0	N/A	0	N/A	0	N/A

3. NAVTEX Coverage:



NAVTEX Stations in NAVAREA XIX

B <sub>1</sub>	Station	Telephone	Fax	E-mail	Operational status
A	Svalbard	+47 75 52 89 25	+47 75 52 58 96	bodo.radio@telenor.com	Confirmed
B	Bodø	+47 75 52 89 25	+47 75 52 58 96	bodo.radio@telenor.com	Confirmed
C	Vardø	+47 75 52 89 25	+47 75 52 58 96	bodo.radio@telenor.com	Confirmed

4. Operational Issues:

Number of messages issued by HF NBDP 2013: 0

In force warning bulletins are issued once a week.

Warnings in force older than 42 days are available on the NAVAREA XIX website.

5. Quality Management Survey

NAVAREA	ISO 9001 - 2008	Promulgate "In-Force" Bulletins	Promulgate "No-Warning" Messages	Monitor Broadcast in almost real time	24/7 contact information provided	Promulgate two scheduled broadcasts	IMO Master Plan updated
XIX	NO	YES	YES	YES	YES	YES	NO

6. Contingency Planning

Procedures and systems are established to operate in an emergency from other locations than the NAVAREA XIX operations room.

7. Capacity Building:

NIL

8. Other Activities:

NIL

9. NAVAREA Website:

NAVAREA XIX warnings in force: <http://www.navarea-xix.no/>

The website is updated in connection with the promulgation of navigational warnings via GMDSS.

The date and time of the last update is displayed on the web site.

10. NAVAREA Contact Information:

No change.

11. Recommendations:

None.

12. Actions requested:

The Sub-Committee is invited to note the report.

13. Summary:

NAVAREA XIX Coordinator introduced the Self-Assessment Report covering the period since WNW55.