

eLoran Initial Operational Capability (IOC) in the UK

Dr. Paul Williams and Mr George Shaw

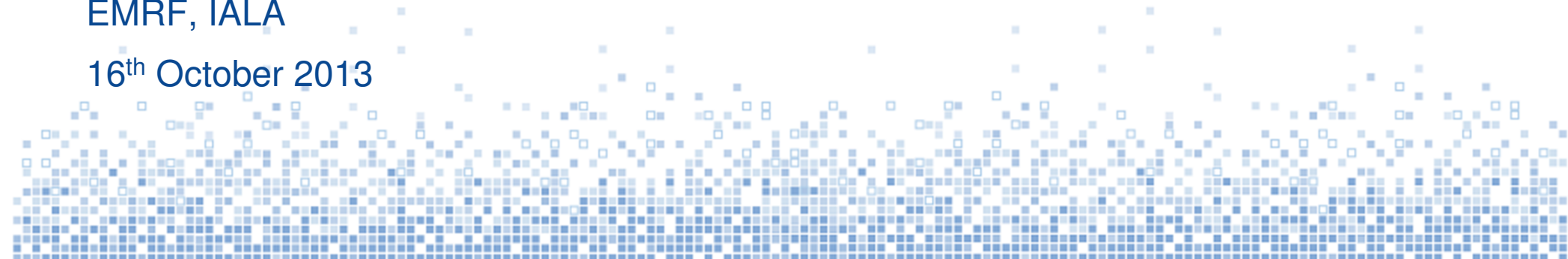
Research and Radionavigation Directorate

General Lighthouse Authorities of United Kingdom and Ireland (GLA)

Members' News Items

EMRF, IALA

16th October 2013



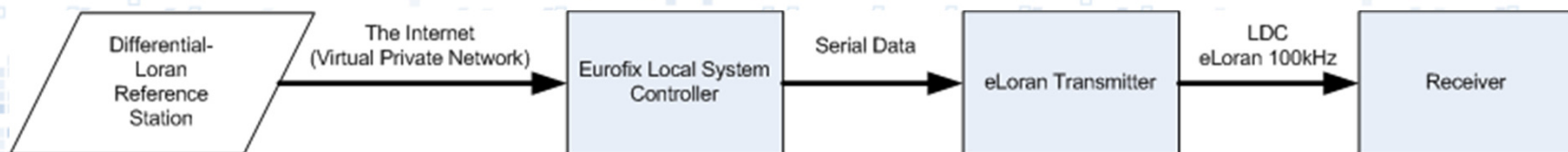
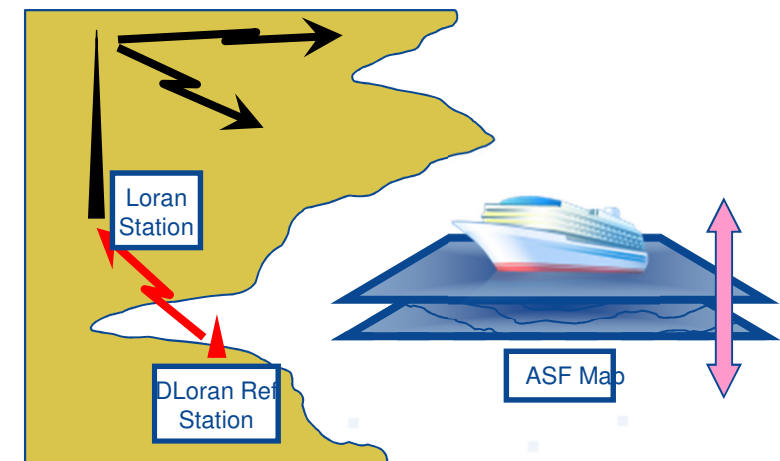
eLoran overview

eLoran Core Service

- Higher specification version of Loran-C **signal-in-space**
- Modern receivers – software based
 - uses all available transmitters – “**all-in-view**”
 - single transmitter provides time
 - three transmitters: 2D position and time
- **eLoran Data Channel (LDC)**

eLoran Maritime Application

- Signal propagation corrections
 - Additional Secondary Factors (ASFs)
- **Differential Loran (DLoran)**
 - **Local reference stations for harbour approach**



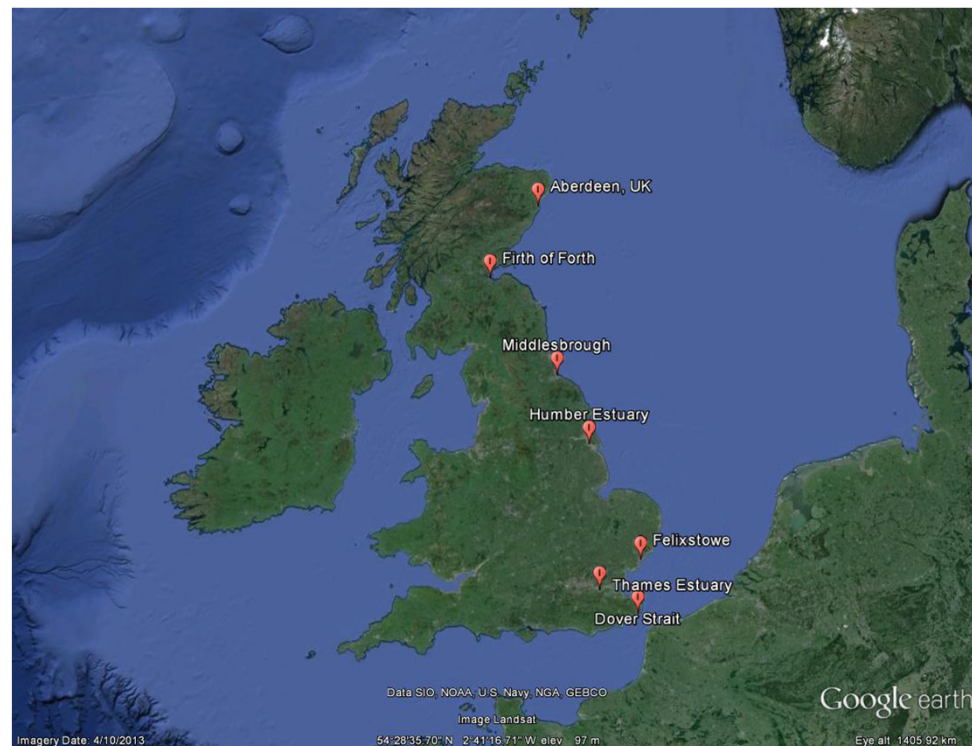
GLA Initial Operational Capability

- **Initial Operational Capability (end-2014)**

- Port Approach level eLoran
- 7 ports on the east coast of the UK
 - 1 upgrade at Harwich/Felixstowe
 - 6 new installs

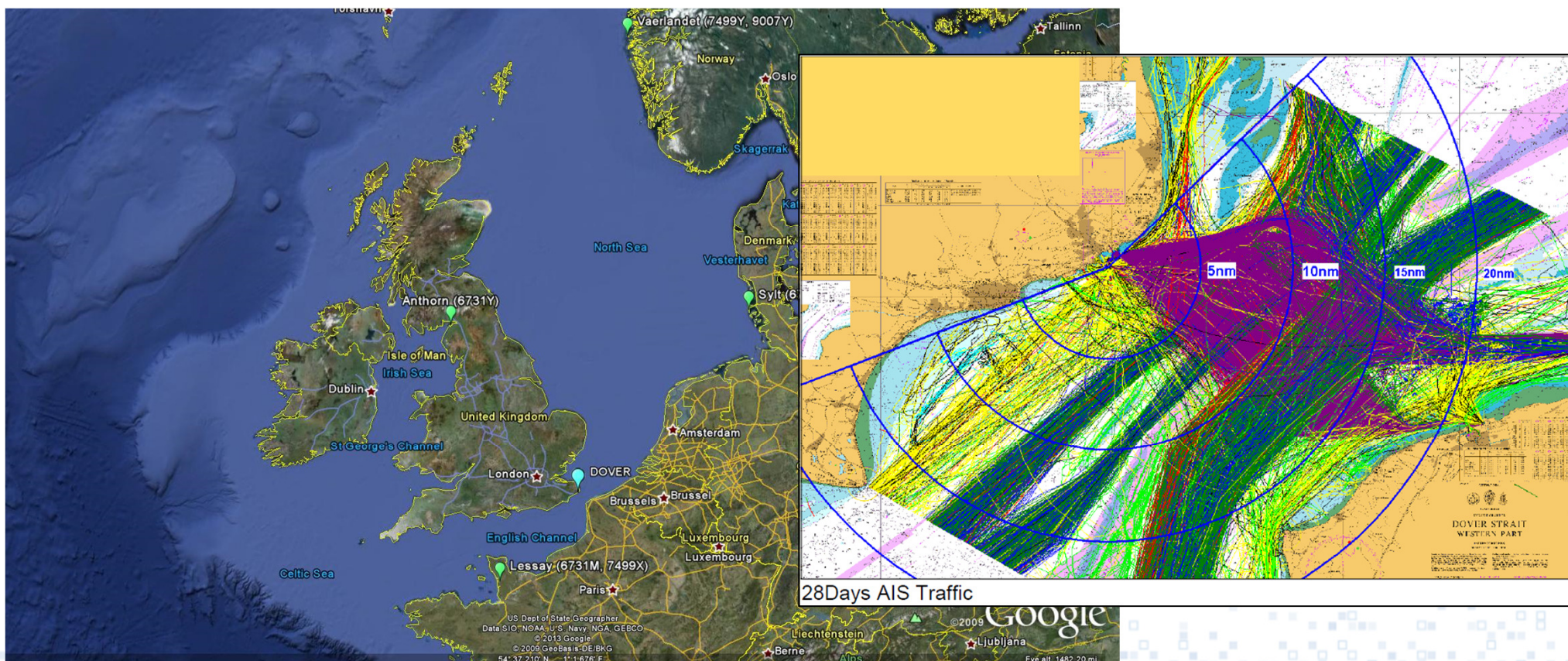
- **UK Ministerial decision in 2016**

- **Full Operational Capability (2019) ??**



Dover and the Dover Strait/La Manche

Declared early implementation in Dover using prototype equipment



Receiver on a Dover to Calais Ferry

RESEARCH &
RADIONAVIGATION
GENERAL LIGHTHOUSE AUTHORITIES
United Kingdom and Ireland



P&O Ferry Spirit of Britain. Picture courtesy P&O.



Thank you!

The General Lighthouse Authorities
Trinity House
The Quay
Harwich
Essex
CO12 3JW
United Kingdom

<http://www.gla-rnav.org>

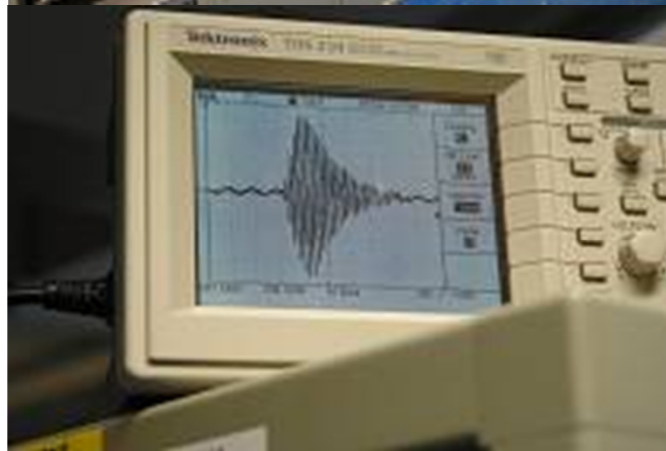
Tel: +44-1255-245146

Dr. Paul Williams

paul.williams@gla-rnav.org

Mr George Shaw

george.shaw@gla-rnav.org



RESEARCH &
RADIONAVIGATION
GENERAL LIGHTHOUSE AUTHORITIES
United Kingdom and Ireland

Loran Station Anthorn

54° 54' 40.35"N
003° 17' 14.21"W