

## MSI Self Assessment NAVAREA XIV

Submitted by New Zealand

### SUMMARY

Executive Summary: Overview of activities undertaken in NAVAREA XIV since WWNWS6

Action to be taken: See section 12

Related documents: None

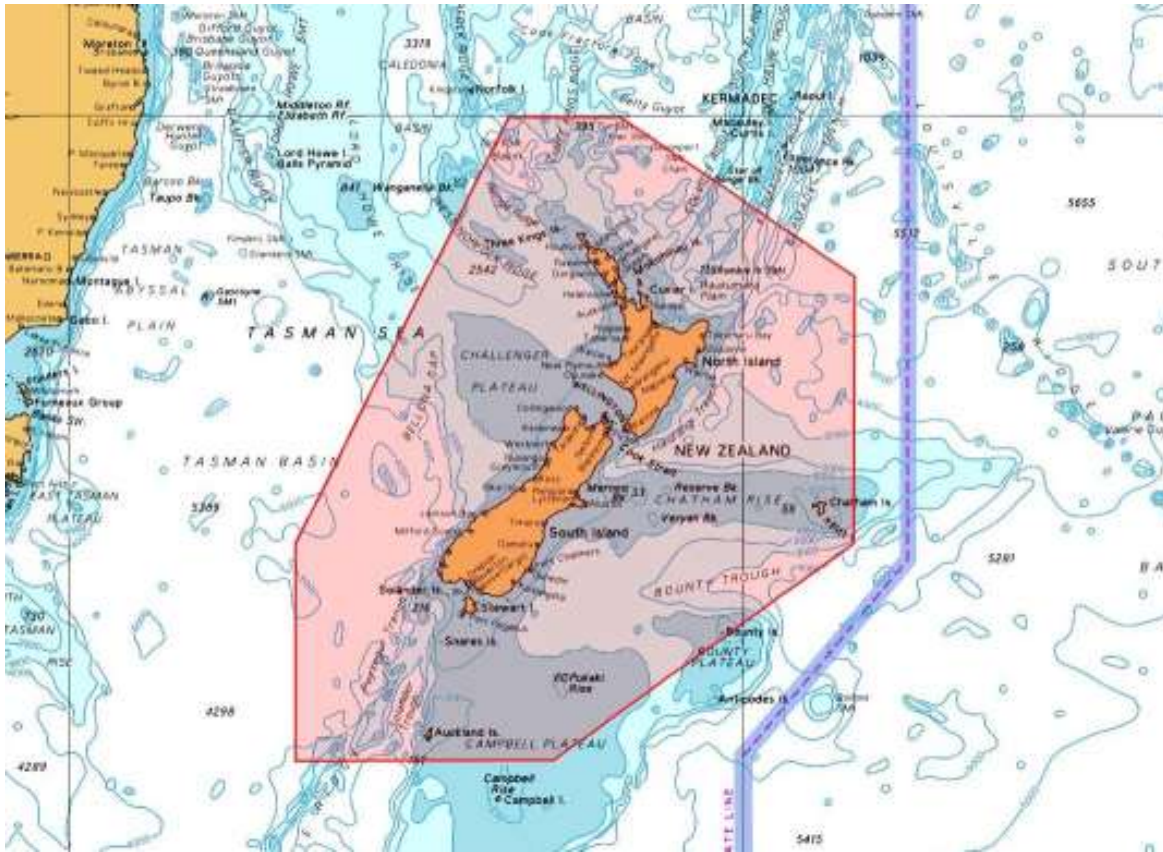
#### 1. Background:

The limits of NAVAREA XIV are given as:

00° 00'N, 120° 00'W to  
73° 50'S, 120° 00'W (Antarctic coast) then  
69° 37'S, 160° 00'E (Antarctic coast) to  
45° 00'S, 160° 00'E to  
29° 00'S, 170° 00'E to  
00° 00'N, 170° 00'E



New Zealand Coastal Warning Area 'Z' is depicted below.



NAVAREA XIV and New Zealand Coastal Warnings are broadcast via:

**Taupo Maritime Radio ZLM (Radio Telephony)** at the first scheduled time following receipt and then at the scheduled times as per ALRS Vol 3(2), 2014/2015 Edition whilst the warnings are in force or until they have been promulgated by other means; and

**Inmarsat-C EGC SafetyNET system** via the Pacific Ocean Region (POR) satellite through the Land Earth Station (LES) at Burum, Netherlands on receipt and as part of scheduled broadcasts 0900 and 2100 UTC.

The warnings are broadcast and monitored by Taupo Maritime Radio through a Mobile Earth Station (MES). The Australian Maritime Safety Authority (AMSA) assists New Zealand in monitoring repeat EGC transmissions via an EGC supervisory system. Transmitted NAVAREA XIV and New Zealand Coastal Navigation Warnings are emailed to Taupo Maritime Radio, where the Coastal Warnings are checked, and NAVAREA XIV warnings are forwarded to the NAVAREA XIV Coordinator.

Operational Points of Contact for National Coordinators within the NAVAREA

COUNTRY	TELEPHONE	FACSIMILE	E-MAIL
Cook Islands	+682 28810		<a href="mailto:stephen.simpson@cookislands.gov.ki">stephen.simpson@cookislands.gov.ki</a>
French Polynesia	+689 541 615	+689 423 915	<a href="mailto:mrccpapeete@mail.pf">mrccpapeete@mail.pf</a>
Fiji	+679 3315 266	+679 3313 127 +679 3303 251	<a href="mailto:msi@msaf.com.fj">msi@msaf.com.fj</a>
New Caledonia	+687 292 332	+687 292 303	<a href="mailto:mrcc.nc@lagoon.nc">mrcc.nc@lagoon.nc</a>
New Zealand	+64 45778030	+64 45778038	<a href="mailto:rccnz@maritimenz.govt.nz">rccnz@maritimenz.govt.nz</a>

Kingdom of Tonga	+676 28024		<a href="mailto:ktonga@infrastructure.gov.to">ktonga@infrastructure.gov.to</a>
Tuvalu	+688 20055	+688 20722	<a href="mailto:nlteiaputi@gmail.com">nlteiaputi@gmail.com</a>
Western Samoa	+685 7770691	+685 28688	<a href="mailto:tafai@mwti.gov.ws">tafai@mwti.gov.ws</a>
Wallis & Futuna			<a href="mailto:mrcc.nc@lagoon.nc">mrcc.nc@lagoon.nc</a>

2. Comments:

2.1 The GMDSS Master Plan is up to date as at July 2015.

2.2 Equipment and software used by NZ to monitor NAVAREA XIV EGC broadcasts are:

Equipment Type	Software Version	Date of Up-date
Thrane & Thrane easyMail	V2.00	Build 025

2.3 Over the past year (2014) the following quantity of MSI was received and reviewed.

NAVAREA XIV

2012				2013				2014			
E-mail	Fax	Phone	Text	E-mail	Fax	Phone	Text	E-mail	Fax	Phone	Text
Records not collated				296	-	-	-	187	-	-	-

NZ Coastal Warning Area 'Z'

2012				2013				2014			
E-mail	Fax	Phone	Text	E-mail	Fax	Phone	Text	E-mail	Fax	Phone	Text
Records not collated				351*				344*			

\* Total correspondence received and assessed for relevance as navigational warnings. Records do not allow separation into separate media (telephone, email, etc.)

2.4 Over the past three years the following quantity of navigational warnings were issued over the SafetyNET.

	2012	2013	2014
NAVAREA XIV	110	114	100
NZ Coastal Warning Area 'Z'	270	288	253

Details of the number of NAVAREA warnings identified as immediate priority (requiring transmission within 30 minutes) and the average elapsed time per broadcast via SafetyNET is not readily available.

3. NAVTEX Coverage:

New Zealand does not broadcast coastal warnings via NAVTEX. The maritime areas around New Zealand have been designated GMDSS Sea Area A3. Given that ships are required to carry equipment appropriate to the area that they are sailing in, carriage of an Inmarsat-C MES is mandatory for SOLAS vessels. Coastal warnings are broadcast using SafetyNET.

4. Operational Issues:

During the period 25<sup>th</sup> September to 2<sup>nd</sup> October 2014 Stratos LES at Burum experienced a fault that prevented New Zealand from sending new messages for transmission via SafetyNET and prevented deletion of expired messages. During this period new messages were emailed to Stratos Burum for manual insertion into the SafetyNET system and expired messages were cancelled via telephone. On 13<sup>th</sup> and 23<sup>rd</sup> April 2015 there were unsuccessful delivery notifications for two NAVAREA XIV warnings. These issues were rectified at LES Burum by resetting the software systems. Stratos was unable to locate the root cause of the fault.

NAVAREA XIV promulgates Warnings In Force bulletins.

Text of NAVAREA XIV and NZ Coastal Navigational Warnings in force is available on the web page <http://www.linz.govt.nz/hydro/nautical-info/navigation-area-14> and reprinted in the fortnightly editions of New Zealand Notices to Mariners.

5. Quality Management Survey

NAVAREA	ISO 9001 -2008	Promulgate "In-Force" Bulletins	Promulgate "No-Warning" Messages	Monitor Broadcast in almost real time	24/7 contact information provided	Promulgate two scheduled broadcasts	IMO Master Plan updated
XIV	NO	YES	YES	YES	YES	YES	YES

6. Contingency Planning

LINZ is investigating a Business Continuity Plan to ensure the provision of MSI continues if a catastrophic event occurs. In the meantime, NAVAREA XII has informally offered to promulgate messages if the need arises.

RCC New Zealand has comprehensive redundancy systems in place, and access to a remote Disaster Recovery site where the provision of WNWNS can continue.

There is an informal arrangement between the out-sourced marine communications centres in Canberra and Wellington. Maritime Operation Centre (MOC) also provides ad-hoc support for other national coordinators in NAVAREA XIV.

7. Capacity Building:

Between 25<sup>th</sup> and 27<sup>th</sup> August 2014, New Zealand hosted an MSI Training Course funded through South West Pacific Hydrographic Commission (SWPHC) Capacity Building Committee Work Programme. The training was led by New Zealand (NAVAREA XIV), Australia (NAVAREA X) and the United States of America (NAVAREA XII) and attended by participants from Cook Islands, Fiji, Kiribati, New Caledonia, Niue, Papua New Guinea, Samoa, Solomon Islands, Tokelau, Tonga, Tuvalu and Vanuatu.

MSI training also formed a component of IHO SWPHC 2 Day Technical Workshop, held in Cook Islands, 23<sup>rd</sup> to 24<sup>th</sup> February 2015, led by New Zealand (LINZ NZHA) and United Kingdom (UKHO).

LINZ has also made a submission to the SWPHC Capacity Building Committee to host a 3-day MSI training course in the region for 2016.

#### 8. Other Activities:

New Zealand hosted the WVNWS 6 meeting, 18<sup>th</sup> to 22<sup>nd</sup> August 2014. This included the first joint session of the WVNWS-SC and WMO WVMWS, held on the 19<sup>th</sup> August and gave an opportunity for respective NAVAREA and METAREA Coordinators to meet.

LINZ and the Ministry of Foreign Affairs & Trade (NZ Aid programme) completed work on the South West Pacific Regional Hydrography Programme. Risk assessments for Tonga and Cook Islands are complete and action planning will form part of the upcoming Pacific Regional Navigation Initiative (PRNI), a 5 year programme to improve maritime safety throughout the region. This project includes a capacity building aspect incorporating MSI training.

Maritime New Zealand attended NCSR2 at IMO Headquarters in London, UK in March 2015 and the Maritime Safety Committee (MSC) - 95<sup>th</sup> session in June 2015.

Following a presentation by John Dodd of Inmarsat to the NAVAREA XIV Coordinator and RCC New Zealand (in its dual capacity as RCC and New Zealand National Coordinator) on 24<sup>th</sup> July, New Zealand will commence a trial for delivery of MSI and SAR Information using the Inmarsat Maritime Safety Server (MSS). Specifics on the testing regime are yet to be finalised.

#### 9. NAVAREA Website:

NAVAREA XIV and Coastal Navigational Warnings in force are available on the Land Information New Zealand (LINZ) website <http://www.linz.govt.nz/sea/maritime-safety/new-zealand-radio-navigational-warnings>. While every effort is made to keep the information up-to-date it may not always be possible to add and cancel warnings in real-time. The website displays the date and time of the last update.

A list of NAVAREA XIV and Coastal Navigational Warnings in force is reprinted in the fortnightly editions of the New Zealand Notices to Mariners which are available from the LINZ website <http://www.linz.govt.nz/sea/maritime-safety/notices-mariners>.

10. NAVAREA Contact Information:

New Zealand Hydrographic Authority  
Land Information New Zealand  
Radio New Zealand House  
155 The Terrace  
PO Box 5501  
Wellington 6145  
New Zealand

Telephone: +64 4 4600110 (Office hours Mon-Fri)  
+64 27 6879536 (H24)  
+64 27 7046994 (H24)  
Fax: +64 4 4983535 (Office hours Mon-Fri)  
E-mail: [navareaxiv@linz.govt.nz](mailto:navareaxiv@linz.govt.nz)  
Website: <http://www.linz.govt.nz/sea/maritime-safety/new-zealand-radio-navigational-warnings>

11. Recommendations:

None

12. Actions requested:

Note the information provided.

13. Summary:

The NAVAREA XIV self-assessment report highlights MSI activities for the period since WWNWS6, including some challenges posed to the normal delivery of MSI. NZ is actively involved with a number of IMO and IHO Sub-Committees and Working Groups; and capacity building in the SWP region.