

MSI Self Assessment NAVAREA XIV

Submitted by New Zealand

SUMMARY

Executive Summary: Overview of activities undertaken in NAVAREA XIV since WWNWS7

Action to be taken: See section 12

Related documents: None

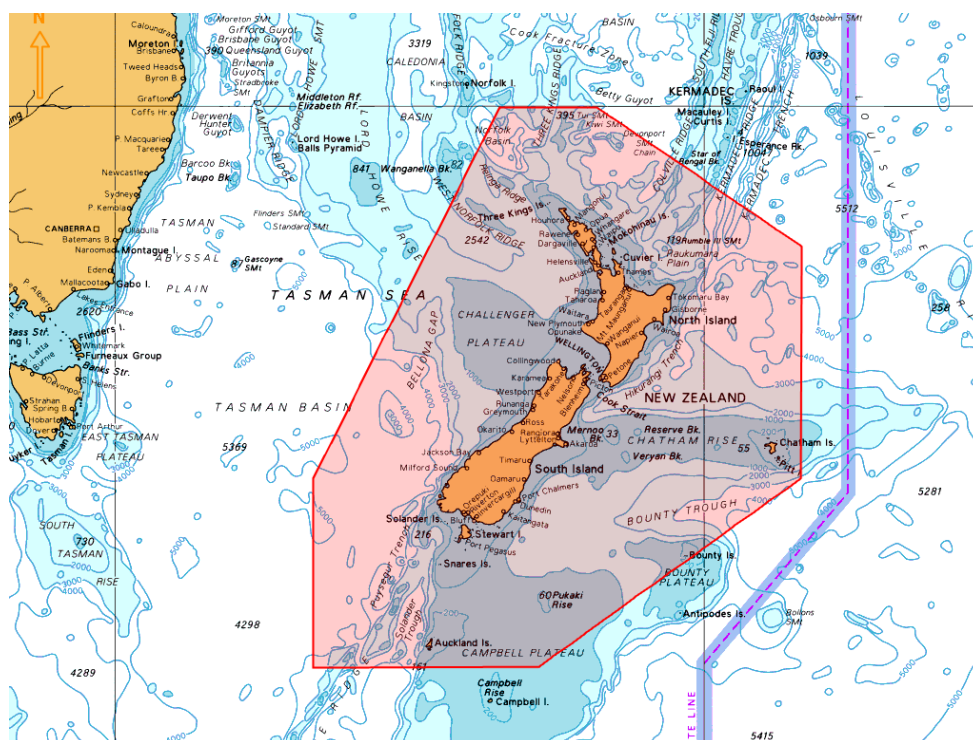
1. Background:

The limits of NAVAREA XIV are given as:

00° 00'N, 120° 00'W to
73° 50'S, 120° 00'W (Antarctic coast) then
69° 37'S, 160° 00'E (Antarctic coast) to
45° 00'S, 160° 00'E to
29° 00'S, 170° 00'E to
00° 00'N, 170° 00'E



New Zealand Coastal Warning Area 'Z' is depicted below.



NAVAREA XIV and New Zealand Coastal Warnings are broadcast via:

Taupo Maritime Radio ZLM (Radio Telephony) at the first scheduled time following receipt and then at the scheduled times as per ALRS Vol 3(2), 2012/2013 Edition whilst the warnings are in force or until they have been promulgated by other means; and

Inmarsat-C EGC SafetyNET system via the Pacific Ocean Region (POR) satellite through the Land Earth Station (LES) at Burum, Netherlands on receipt and as part of scheduled broadcasts 0900 and 2100 UTC.

The warnings are broadcast and monitored by Taupo Maritime Radio through a Mobile Earth Station (MES). The Australian Maritime Safety Authority (AMSA) assists New Zealand in monitoring repeat EGC transmissions via an EGC supervisory system. Transmitted NAVAREA XIV and New Zealand Coastal Navigation Warnings are emailed to Taupo Maritime Radio, where the Coastal Warnings are checked, and NAVAREA XIV warnings are forwarded to the NAVAREA XIV Coordinator.

Operational Points of Contact for National Co-ordinators within the NAVAREA

COUNTRY	INSTITUTION	TELEPHONE	FACSIMILE	EMAIL
Cook Islands	Ministry of Transport	+(682) 28810	+(682) 28816	stephen.simpson@cookislands.gov.ck
French Polynesia	MRCC Papeete	+(689) 541 615	+(689) 423 915	mrccpapeete@mail.pf
Fiji	Maritime Safety Authority Fiji	+(679) 3315 266	+(679) 3303 251	msi@msaf.com.fj
New Caledonia	MRCC New Caledonia	+(687) 292 332	+(687) 292 303	mrcc.nc@lagoon.nc
New Zealand	RCCNZ	+(64) 45778030	+(64) 45778038	rccnz@maritimenz.govt.nz

Wallis & Futuna	MRCC New Caledonia			mrcc.nc@lagoon.nc
-----------------	--------------------	--	--	--

2. Comments:

2.1 The GMDSS Master Plan is up to date as at July 2016.

2.2 Equipment and software used by NZ to monitor NAVAREA XIV EGC broadcasts are:

Equipment Type	Software Version	Date of Up-date
Thrane & Thrane easyMail	V2.00	Build 025

2.3 The following quantity of MSI was received and reviewed.

NAVAREA XIV

2013				2014				2015			
E-mail	Fax	Phone	Text	E-mail	Fax	Phone	Text	E-mail	Fax	Phone	Text
296	-	-	-	187	-	-	-	196	-	-	-

NZ Coastal Warning Area 'Z'

2013				2014				2015			
E-mail	Fax	Phone	Text	E-mail	Fax	Phone	Text	E-mail	Fax	Phone	Text
351*				344*				332*			

* Total correspondence received and assessed for relevance as navigational warnings.
Records do not allow separation into separate media (telephone, email, etc.)

2.4 Over the past three years the following quantity of navigational warnings were issued over the SafetyNET.

	2013	2014	2015
NAVAREA XIV	114	100	111
NZ Coastal Warning Area 'Z'	288	253	230

[Detail the number of NAVAREA warnings identified as immediate priority (requiring transmission within 30 minutes) and the average elapsed time per broadcast via SafetyNET]:

2013		2014		2015	
Total	Average elapsed time	Total	Average elapsed time	Total	Average elapsed time
Not readily available		7	39 Mins	17	43 Mins

[Specifics of requests for list of in-force navigations warnings]

2013		2014		2015	
Total	E-mail	Total	E-mail	Total	E-mail
Not readily available		8	8	17	17

3. NAVTEX Coverage:

New Zealand does not broadcast coastal warnings via NAVTEX. The maritime areas around New Zealand have been designated GMDSS Sea Area A3. Given that ships are required to carry equipment appropriate to the area that they are sailing in, carriage of an Inmarsat-C MES is mandatory for SOLAS vessels. Coastal warnings are broadcast using SafetyNET.

4. Operational Issues:

No operational issues to report.

NAVAREA XIV promulgates Warnings In Force bulletins.

Text of NAVAREA XIV and NZ Coastal Navigational Warnings in force is available on the web page <http://www.linz.govt.nz/sea/maritime-safety/new-zealand-radio-navigational-warnings> and reprinted in the fortnightly editions of New Zealand Notices to Mariners.

5. Quality Management Survey

NAVAREA	ISO 9001 -2008	Promulgate "In-Force" Bulletins	Promulgate "No-Warning" Messages	Monitor Broadcast	24/7 contact information provided	Promulgate two scheduled broadcasts	IMO Master Plan updated
XIV	NO	YES	YES	YES	YES	YES	YES

6. Contingency Planning

NAVAREA XII has informally offered to promulgate messages if the need arises.

RCC New Zealand has comprehensive redundancy systems in place, and access to a remote Disaster Recovery site where the provision of WWNWS can continue.

There is an informal arrangement between the out-sourced marine communications centres in Canberra and Wellington. Maritime Operation Centre (MOC) also provides ad-hoc support for other national coordinators in NAVAREA XIV.

7. Capacity Building:

Between 22nd and 24th August 2016, New Zealand hosted an MSI Training Course funded through South West Pacific Hydrographic Commission (SWPHC) Capacity Building Committee Work Programme. The training was led by New Zealand (NAVAREA XIV), and attended by 17 participants from Cook Islands, Fiji, French Polynesia, Kiribati, New Caledonia, New Zealand, Niue, Papua New Guinea, Samoa, Solomon Islands, Tonga, Tuvalu and Vanuatu.

8. Other Activities:

LINZ and the Ministry of Foreign Affairs & Trade (NZ Aid programme) are working together on the Pacific Regional Navigation Initiative (PRNI), a 5 year programme to improve maritime safety throughout the region. This project includes; hydrography risk assessments for Niue (completed), Samoa and Tokelau; capacity building to assist PICs reach Phase 1 of the IHO Capacity Building Strategy, in particular, the establishment of a National MSI Coordinator position.

9. NAVAREA Website:

NAVAREA XIV and Coastal Navigational Warnings in force are available on the Land Information New Zealand (LINZ) website <http://www.linz.govt.nz/sea/maritime-safety/new-zealand-radio-navigational-warnings>. While every effort is made to keep the information up-to-date it may not always be possible to add and cancel warnings in real-time. The website displays the date and time of the last update.

Website statistics (1 March- 24 August 2016)

Countries accessing website : Australia, New Zealand, Spain, Sweden, Ukraine, United Kingdom, United States of America.

Total number of 'hits' : 370

Number of unique 'hits' : 272

10 requests received to provide warnings in force direct to vessel.

A list of NAVAREA XIV and Coastal Navigational Warnings in force is reprinted in the fortnightly editions of the New Zealand Notices to Mariners which are available from the LINZ website <http://www.linz.govt.nz/sea/maritime-safety/notices-mariners>.

10. NAVAREA Contact Information:

New Zealand Hydrographic Authority
Land Information New Zealand
Radio New Zealand House
155 The Terrace
PO Box 5501
Wellington 6145
New Zealand

Telephone: +64 4 4600110 (Office hours Mon-Fri)

+64 27 6879536 (H24)

+64 27 7046994 (H24)

Fax: +64 4 4983535 (Office hours Mon-Fri)

E-mail: navareaxiv@linz.govt.nz

Website: <http://www.linz.govt.nz/sea/maritime-safety/new-zealand-radio-navigational-warnings>

11. Recommendations:

None

12. Actions requested:

Note the information provided.

13. Summary:

The NAVAREA XIV self-assessment report highlights MSI activities for the period since WWNWS7. NZ is actively involved with a number of IMO and IHO Sub-Committees and Working Groups; and capacity building in the SWP region through the Regional Hydrographic Commission and the NZ Aid Programme, PRNI.