

MSI Self Assessment NAVAREA XIV

Submitted by New Zealand

SUMMARY

Executive Summary: Overview of activities undertaken in NAVAREA XIV since WWNWS8

Action to be taken: See paragraph 12

Related documents: None

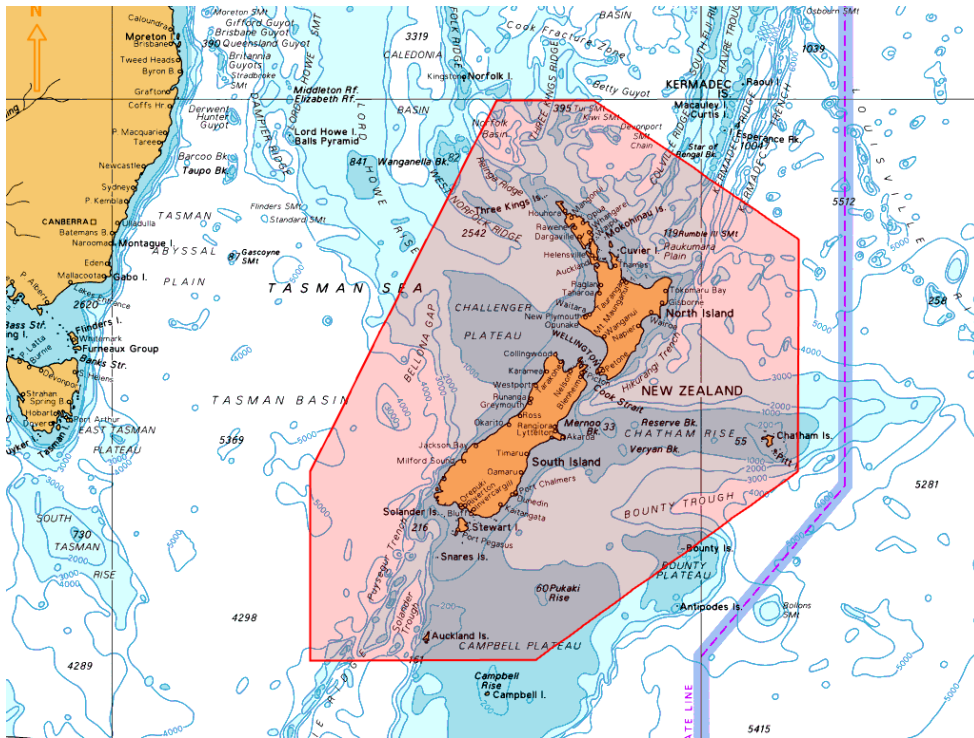
1. Background:

The limits of NAVAREA XIV are given as:

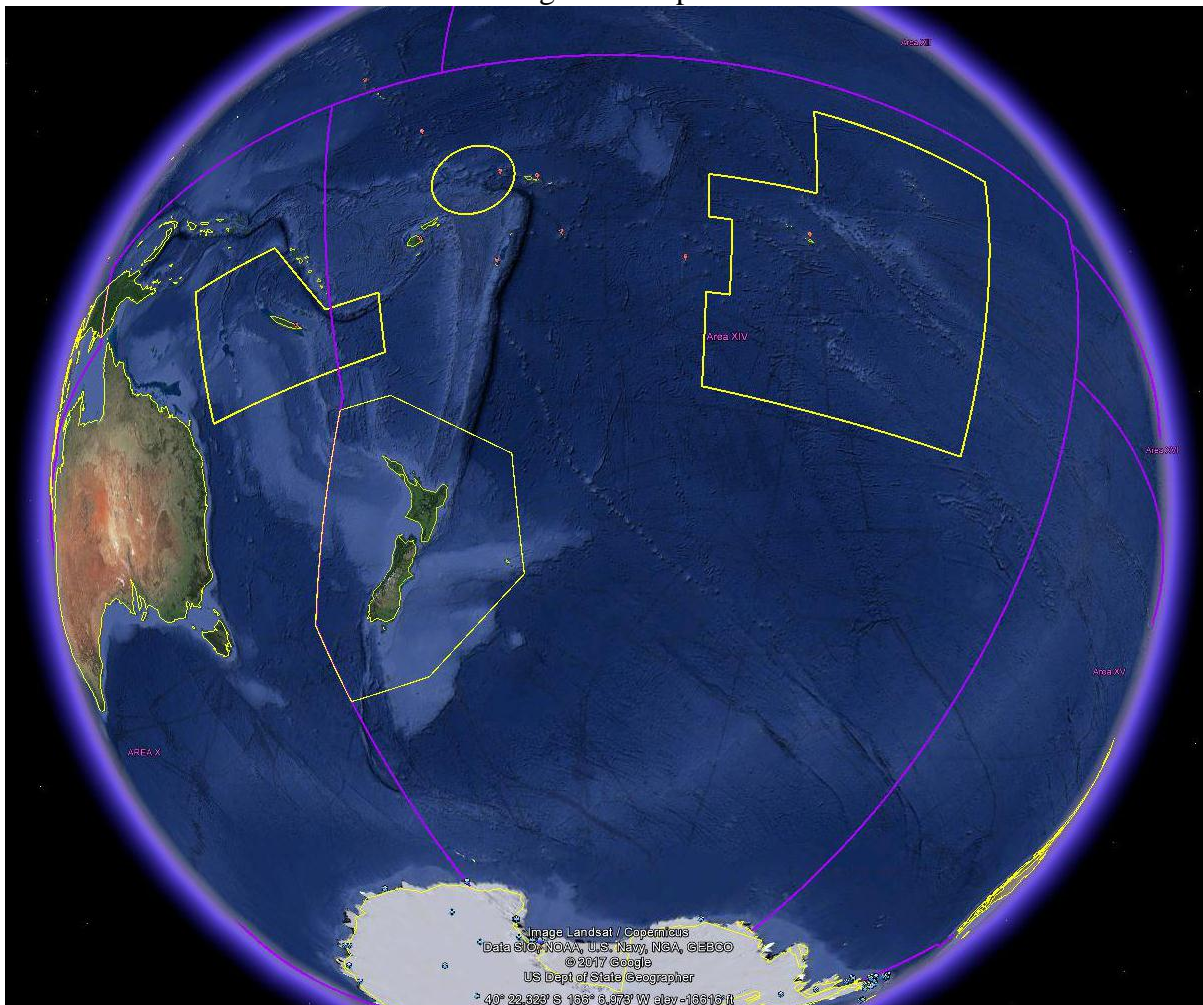
00° 00'N, 120° 00'W to
73° 50'S, 120° 00'W (Antarctic coast) then
69° 37'S, 160° 00'E (Antarctic coast) to
45° 00'S, 160° 00'E to
29° 00'S, 170° 00'E to
00° 00'N, 170° 00'E



New Zealand Coastal Warning Area 'Z' is depicted below.



NAVAREA XIV with all Coastal Warning Areas depicted below.



NAVAREA XIV and New Zealand Coastal Warnings are broadcast via:

Taupo Maritime Radio ZLM (Radio Telephony) at the first scheduled time following receipt and then at the scheduled times as per ALRS Vol 3(2), 2017/2018 Edition whilst the warnings are in force or until they have been promulgated by other means; and

Inmarsat-C EGC SafetyNET system via the Pacific Ocean Region (POR) satellite through the Land Earth Station (LES) at Burum, Netherlands on receipt and as part of scheduled broadcasts 0900 and 2100 UTC.

The warnings are broadcast and monitored by Taupo Maritime Radio through a Mobile Earth Station (MES). The Australian Maritime Safety Authority (AMSA) assists New Zealand in monitoring repeat EGC transmissions via an EGC supervisory system. Transmitted NAVAREA XIV and New Zealand Coastal Navigation Warnings are emailed to Taupo Maritime Radio, where the Coastal Warnings are checked, and NAVAREA XIV warnings are forwarded to the NAVAREA XIV Coordinator.

Operational Points of Contact for National Co-ordinators within the NAVAREA

COUNTRY	INSTITUTION	TELEPHONE	FACSIMILE	EMAIL
Cook Islands	Ministry of Transport	+682 28810	+682 24321	Stephen.simpson@cookislands.gov.ck
French Polynesia	JRCC Tahiti	+689 541 616	+689 404 23915	contact@jrcc.pf
Fiji	Maritime Safety Authority Fiji	+679 331 5266	+679 331 3127	msi@msaf.com.fj
Kiribati		+686 730 34963		marine.officer@mcttd.gov.ki
New Caledonia	MRCC New Caledonia	+687 292 332	+687 292 303	operations@mrcc.nc
New Zealand	RCCNZ	+64 4 577 8030	+64 4 577 8038	rccnz@maritimenz.govt.nz
Niue	Ministry of Transport	+683 6983		lynsey.talagi@mail.gov.nu
Samoa	Ministry of Works, Transport & Infrastructure	+685 21 611	+685 28 688	faleni.alesana@mwti.gov.ws
Tonga, Kingdom of	Ministry of Infrastructure, Marine & Ports Division	+676 22 555	+676 42 467	sanele@infrastructure.gov.to
Tuvalu		+688 20055		lpaueli@gmail.com
Wallis & Futuna	MRCC New Caledonia	+687 292 332	+687 292 303	operations@mrcc.nc

2. Comments:

2.1 The GMDSS Master Plan is up to date as at May 2017.

2.2 Equipment and software used by NZ to monitor NAVAREA XIV EGC broadcasts are:

Equipment Type	Software Version	Date of Up-date
Thrane & Thrane easyMail	V2.00	Build 025

2.3 The following quantity of MSI was received and reviewed.

NAVAREA XIV

The table shows specifics of information received and SafetyNet messages promulgated:

2014				2015				2016			
E-mail	Fax	Phone	Text	E-mail	Fax	Phone	Text	E-mail	Fax	Phone	Text
187	-	-	-	196	-	-	-	184	-	-	-

NAVAREA warnings identified as immediate priority and broadcast via SafetyNET:

2014		2015		2016	
Total	Average elapsed time	Total	Average elapsed time	Total	Average elapsed time
7	39 Mins	17	43 Mins	21	33 Mins

Requests for list of in-force navigations warnings

2014		2015		2016	
Total	E-mail	Total	E-mail	Total	E-mail
Info not held	-	15	15	10	10

NZ Coastal Warning Area 'Z'

2014		2015		2016	
Total	E-mail	Total	E-mail	Total	E-mail
344*		332*		359*	

* Total correspondence received and assessed for relevance as navigational warnings. Records do not allow separation into separate media (telephone, email, etc.)

2.4 Over the past three years the following quantity of navigational warnings were issued over the SafetyNET.

	2014	2015	2016
NAVAREA XIV	100	111	98
NZ Coastal Warning Area 'Z'	253	230	298

3. NAVTEX Coverage:

New Zealand does not broadcast coastal warnings via NAVTEX. The maritime areas around New Zealand have been designated GMDSS Sea Area A3. Given that ships are required to carry equipment appropriate to the area that they are sailing in, carriage of an Inmarsat-C MES is mandatory for SOLAS vessels. Coastal warnings are broadcast using SafetyNET.

4. Operational Issues:

4.1 MSI Received from Coastal States within NAVAREA XIV

Coastal State/Country	Number of MSI messages	Topics/Subjects of messages
Cook Islands	0	
Fiji	67 (2016) 41 (2017)	AtoN, wreck, shoal, survey ops, cable laying ops
French Polynesia	19 (2016) 19 (2017)	Failure of radio services, military exercises
New Caledonia	18 (2016) 5 (2017)	Military exercises
Niue	0	
Samoa	0	
Tonga	3 (2016) 1 (2017)	AtoN
Wallis & Futuna	Covered by New Caledonia	
Kiribati	0	

4.2 Transfer of NAVAREA XIV Coordinator responsibility

As of 1 July 2017 Maritime New Zealand, through Rescue Coordination Centre New Zealand (RCCNZ) assumed the role of NAVAREA XIV Coordinator. Land Information New Zealand (LINZ) retains the role of New Zealand Hydrographic Authority (NZHA).

The transfer of responsibility between the two New Zealand government organisations was by mutual consent, recognising that Maritime New Zealand:

- Manages the New Zealand relationship with IMO; IMO is the authority for the WWNWS as part of the GMDSS in the SOLAS Convention,
- Has regularly attended WWNWS meetings on behalf of the NAVAREA XIV Coordinator,
- Is the New Zealand National Coordinator for Coastal Warnings, and
- Through the 24/7 RCCNZ operations, is better placed to ensure urgent NAVAREA warnings reach the mariner in a timely manner.

Maritime New Zealand and LINZ will coordinate closely on the delivery of regional Maritime Safety Information (MSI) courses, with Maritime New Zealand preparing the training and LINZ maintaining the link with the IHO Capacity Building Sub-Committee (CBSC).

5. Quality Management Survey

NAVAREA	ISO 9001 -2008	Promulgate “In-Force” Bulletins	Promulgate “No-Warning” Messages	Monitor Broadcast	24/7 contact information provided	Promulgate two scheduled broadcasts	IMO Master Plan updated
XIV	NO	YES	YES	YES	YES	YES	YES

6. Contingency Planning

NAVAREA XII has informally offered to promulgate messages if the need arises.

RCC New Zealand has comprehensive redundancy systems in place, and access to a remote Disaster Recovery site where the provision of WNWNS can continue.

There is an informal arrangement between the out-sourced marine communications centres in Canberra and Wellington. Maritime Operation Centre (MOC) also provides ad-hoc support for other national coordinators in NAVAREA XIV.

7. Capacity Building:

LINZ and the Ministry of Foreign Affairs & Trade (NZ Aid programme) are working together on the Pacific Regional Navigation Initiative (PRNI), a 5 year programme to improve maritime safety throughout the region. LINZ has a focus on the Cook Islands, Niue, Samoa, Tokelau and Tonga. This project includes; hydrography risk assessments for Niue and Samoa (completed) and Tokelau; capacity building to assist PICs reach Phase 1 of the IHO Capacity Building Strategy, in particular, the establishment of a National MSI Coordinator position.

During visits undertaken by LINZ as part of PRNI, each PIC has requested in-country MSI training. LINZ is planning to hold such training during 2017/18 as part of PRNI.

In addition, NZ, through the South West Pacific Hydrographic Commission (SWPHC), made a submission to the IHO Capacity Building Sub-Committee (CBSC) meeting of June 2017, to hold MSI training in NZ in 2018.

8. Other Activities:

In December 2016, LINZ attended the 14th SWPHC meeting held in Noumea, New Caledonia. Delegates from 11 PICT’s attended the meeting, as well as the 2-day IHO technical workshop *for PICTS Developing Strategic Development Plans for Hydrography*, held prior to the commission meeting.

Maritime New Zealand attended NCSR4 at IMO Headquarters in London, UK in March 2017 and the Maritime Safety Committee (MSC) – 98th session in June 2017.

9. NAVAREA Website:

NAVAREA XIV warnings in force: www.maritimenz.govt.nz/navarea

The website is updated daily during normal office working hours.

The date and time of the last update is displayed on the web site.

10. NAVAREA Contact Information:

Since 01 July 2017, Rescue Coordination Centre New Zealand (on behalf of Maritime New Zealand) has undertaken the role of NAVAREA XIV Coordinator; a role which was previously held by Land Information New Zealand (LINZ).

NAVAREA XIV Coordinator

Maritime New Zealand

RCCNZ

41 Percy Cameron Street, Avalon Studios Level 1

PO Box 30050

LOWER HUTT 5040

New Zealand

Tel: +64 4 577 8030 (24 hours)

FAX: +64 4 577 8038 (24 hours)

E-mail rccnz@maritimenz.govt.nz (24 hours)

Website: <http://www.maritimenz.govt.nz/navarea>

11. Recommendations:

None

12. Actions requested:

The sub-committee is requested to note the information provided.

13. Summary:

The NAVAREA XIV self-assessment report highlights MSI activities for the period since WWNWS8. NZ is actively involved with a number of IMO and IHO Sub-Committees and Working Groups; and capacity building in the SWP region through the Regional Hydrographic Commission and the NZ Aid Programme, PRNI