

# 11<sup>th</sup> CSPCWG-1<sup>st</sup> NCWG MEETING

Rostock, Germany 27-30 April 2015

## Paper for Consideration by CSPCWG

### Areas to be avoided (ATBA) within TSS

<b>Submitted by:</b>	Netherlands Hydrographic Office 5 <sup>th</sup> February 2015
<b>Executive Summary:</b>	Charting of ATBA areas in TSS
<b>Related Documents:</b>	S4 ed 4.4.0 chapters B-435.7
<b>Related Projects:</b>	

### Introduction / Background

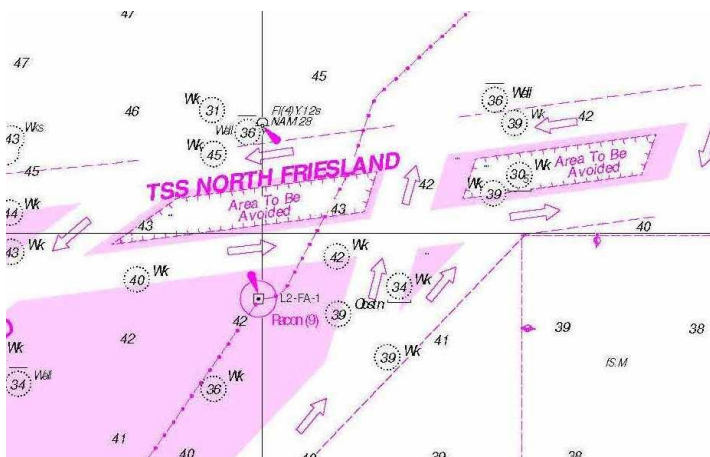
A growing number of Areas to be Avoided is charted within various Traffic Separation Schemes

### Analysis / Discussion

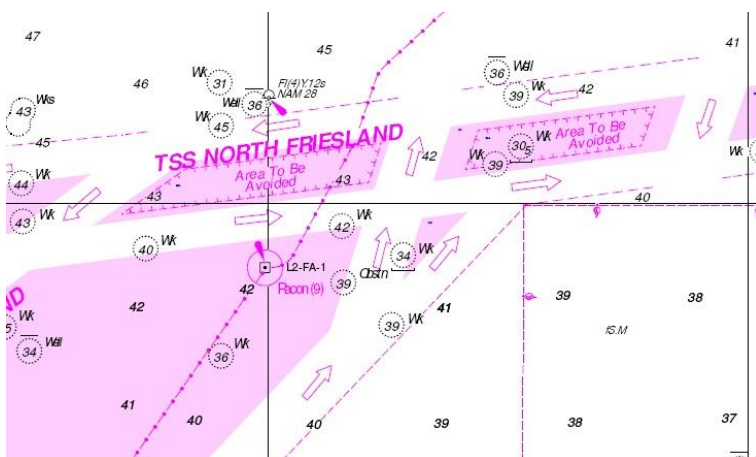
During the last years there have been several changes in Traffic Separation schemes in the North Sea. On various occasions an Area to be Avoided (ATBA) was implemented in the TSS area. When these areas are part of the separation zone there is some confusion and a lack of guidelines in the visualisation of the ATBA:

Some of the ATBA's in the Ship's Routing Guide are shown in white (depending upon bathymetry behind it), but in the area Maas North the ATBA has the magenta colour of the separation zone. There seems to be somewhat freedom in choosing the colour for the areas.

Should it be this:



Or this:



When for instance, an anchoring area is charted in a separation zone, this is included in the coordinates of the separation zone. In that case the anchorage area has no magenta infill.

### **Conclusions**

We decided to visualize the areas with the magenta raster on the background, based on a case from the past.

### **Recommendations**

#### **Justification and Impacts**

#### **Action required of CSPCWG**

Add a guideline for symbolisation of areas in Separation zones