

**5th CSPCWG MEETING
Sydney, 18-21 November 2008**

Paper for Consideration by CSPCWG

New symbol for K47 Shellfish Beds

Submitted by:	France
Executive Summary:	Shellfish beds are shown on charts with a legend (see INT1 K47). To avoid cluttering problems and for an universal reading, a new symbol is proposed
Related Documents:	INT 1
Related Projects:	New specification B-510.4

Introduction / Background

Shellfish beds are shown on charts with a legend and a limit. Several legends are used depending of the kind of activity: Shellfish Beds, Oysters Park, Mussels, etc. Shellfish Beds often occur inshore in shallow water where charts are cluttered.

The new specification B-510-4 implies that a legend in English should be added besides the legend in national language. This will cause some new difficulties of congestion.

Then a symbol is preferred.

Analysis / Discussion

France propose a new symbol for Shellfish Beds. This symbol can be black or magenta depending of the context (the shellfish beds are an obstruction or not).

Numbers should be K47.1 – *Shellfish Beds with no obstruction*, and K47.2 *Shellfish Beds*.

The symbol applies for all kinds of shellfish.

Symbol details



Réserve de coquillages
Shellfish beds

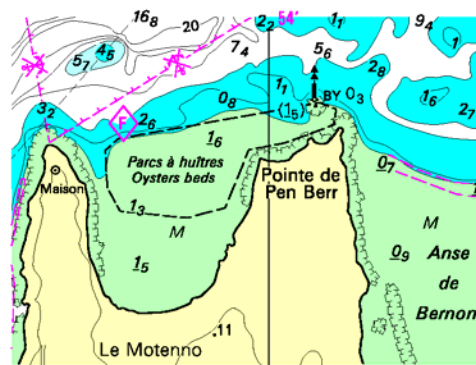
Current K47



K47.1



K47.2

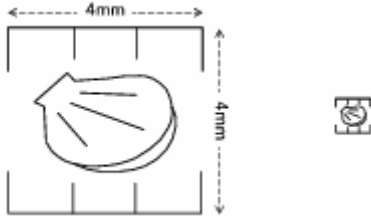


A usual portrayal



Portrayal with proposed K47.2

Another option is to add the “cage” symbol as in K48 to better express that some specific installations could exist.



Conclusions and recommendations

FR recommends the adoption of this new symbol. The “cage” symbol option should be considered.

Justification and Impacts

- Reduce cluttering legends
- Offer an universal reading
- Modify INT1 and M4
- Create the new symbol in libraries.

Action required of CSPCWG

The CSPCWG is invited to consider the new symbol proposed and its “cage” symbol option and to verify his “universality”.