

7th CSPCWG Meeting
23-26 November 2010, Simon's Town, South Africa

Paper for Consideration by CSPCWG

Symbol for Diving prohibited

Submitted by:	SWEDEN
Executive Summary:	Sweden would like to bring forward for discussion and further action by the CSPCWG a proposal for a symbol for restricted area where diving is prohibited.
Related Documents:	S-4, INT 1
Related Projects:	None known

Introduction / Background

Charts are mainly intended to be used by mariners who usually do not have any concerns about whether diving is prohibited or not. However divers are also chart users and therefore different authorities have an interest in that restricted areas where diving is prohibited are published in charts. Therefore a national symbol for diving prohibited is used in quite a few countries. Denmark, Norway, Poland and Sweden have been identified as users of such a symbol.

Analysis / Discussion

SE propose that the national symbol currently used by Sweden (and other countries) should become an international symbol. The symbol (see Image 1 below) has been used for many years and should be self-explanatory for chart users. This symbol is also published in UKHO INT1 as national symbol Nb but the symbol would only be found in charts adopted into the Admiralty chart series.



Image 1 Swedish national symbol for Diving Prohibited.

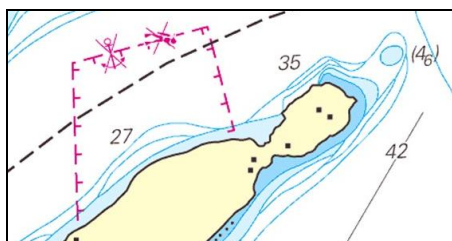


Image 2 Example from SE chart 6145 – INT1769 where the symbol for Diving Prohibited is used in combination with the symbol for Anchoring Prohibited.

In S57 Diving Prohibited is handled by the object class Restricted area (RESARE) and the attribute Restriction (RESTRN), value 11 (diving prohibited). Given that diving prohibited is handled by ENCs indicates that a symbology also would be useful for paper charts.

SE would like to bring this matter forward to CSPCWG for further discussion.

Conclusions

The specifications given in S-4 and INT1 would need to be amended.

Recommendations

It is recommended that S-4 section B439.3 and 4 is amended to also include Diving Prohibited.

A possible solution in INT1 would be to split N21 (currently Fishing Prohibited) into N21.1 for Fishing Prohibited and N21.2 for Diving Prohibited.

Action required of CSPCWG

The CSPCWG is invited to discuss the possible benefit and implementation of the proposal.