

9th CSPWG MEETING
Seoul, Republic of Korea, 13-16 November, 2012

Paper for Consideration by CSPCWG
Obstructions

Submitted by:	Italian Hydrographic Office
Executive Summary:	Clarification about artificial or natural obstructions.
Related Documents:	S4, INT1, S32
Related Projects:	Review of S4

Introduction / Background

We think that the definition of obstruction reported in S-32 is ambiguous: obstructions are “... *tout obstacle, principalement artificiel...par exemple, des blocs de béton ou des pieux.*” in French; but “...*the term is used to refer to an isolated danger to NAVIGATION, such as a SUNKEN ROCK or PINNACLE*” in English, that seems more related to underwater rocks (K14) rather than obstructions (K40).

Analysis / Discussion

We agree with the clarification on charting obstruction inserted in S-4 ed. 4.3.0 at B-422.9:
Further information may be provided by replacement of the legend ‘Obstn’ with appropriate legends to indicate the characteristics of the submerged obstruction, where known, e.g. ‘ODAS’, ‘Diffuser’.

Therefore:

1) Can we assume that the legend “Obstn” should be used only for generic artificial features (e.g concrete block) lying on the seabed?

If the answer is YES we think that it would be better to change the title of the item B-422.9 from “Submerged obstructions” to “Submerged artificial obstructions”.

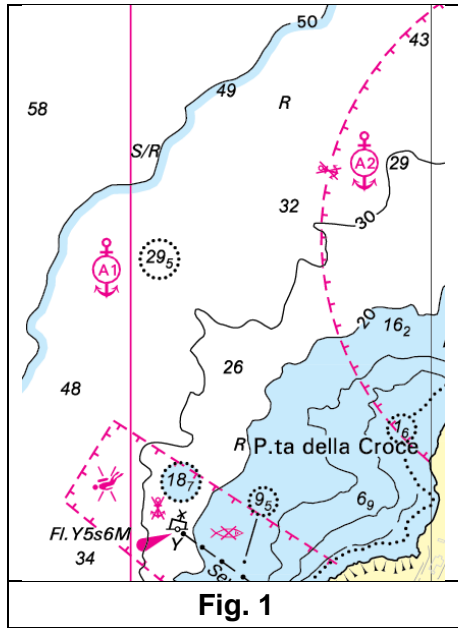
2) Can we represent an anomalous sounding that is shoaler than surrounding depths (for which the exact nature is not specified) using K1 without Obstn legend?

If the answer is YES we think that it would be better to specify this case in B-420.1 inserting for example this sentence: *Anomalous sounding for which the seabed nature is not specified should be represented as sounding encircled by K1 without the legend Obstn.*(See Fig. 1)

Conclusions

This clarification would avoid an excessive use of the legend “Obstn” for example for a shoal sounding encircled by danger line that appears on the deep-water side of the depth contour line (B-411.1).

The sentence suggested at point 2 is to avoid ambiguity between the use of K41 and sounding encircled by danger line in K1.



Action required of CSPCWG

The CSPCWG is invited to:

- a. endorse
 - b. agree
 - c. note
- etc.