


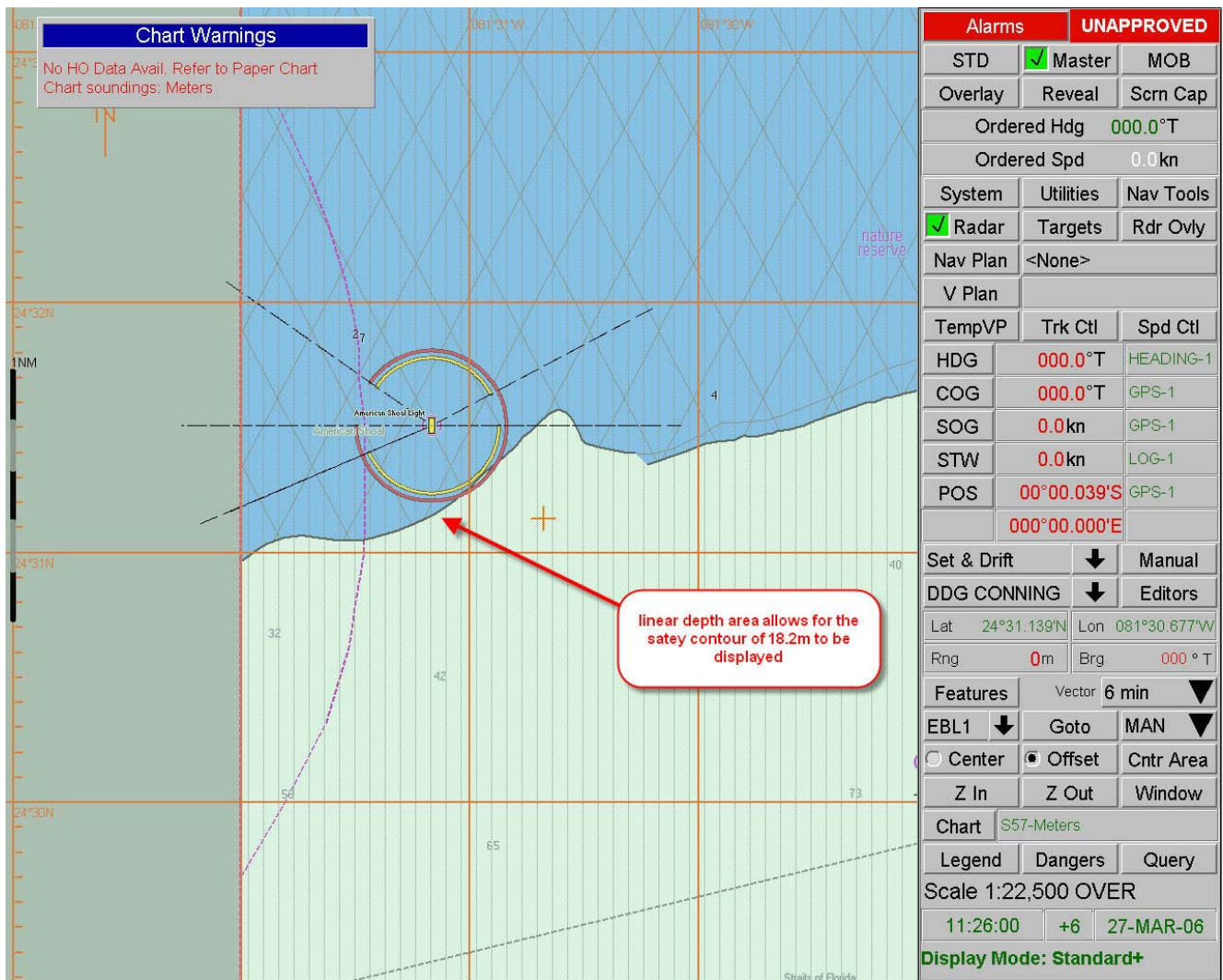
	<b>CSMWG16-5.2C</b>
	<b>The University of Southern Mississippi Department of Marine Science</b> <b>ECDIS Laboratory</b> <b>1020 Balch Blvd</b> <b>Stennis Space Center, MS. 39529</b> <b>228-688-2383</b>

### **Examples of ECDIS running Presentation Library ed3.2 vs ed3.3**

The following example demonstrates how an ECDIS running Presentation Library ed3.2 differs from an ECDIS running ed3.3. For this example the original cell was loaded into VMS running library ed3.2 and ECPINS-W running library ed3.3. An area of the cell where a linear depth area is present was displayed and the safety contour set to 18.2 meters. Next the cell was edited and the linear depth area deleted. Finally the original cell in ECDIS was replaced by the new cell with the depth area line deleted.

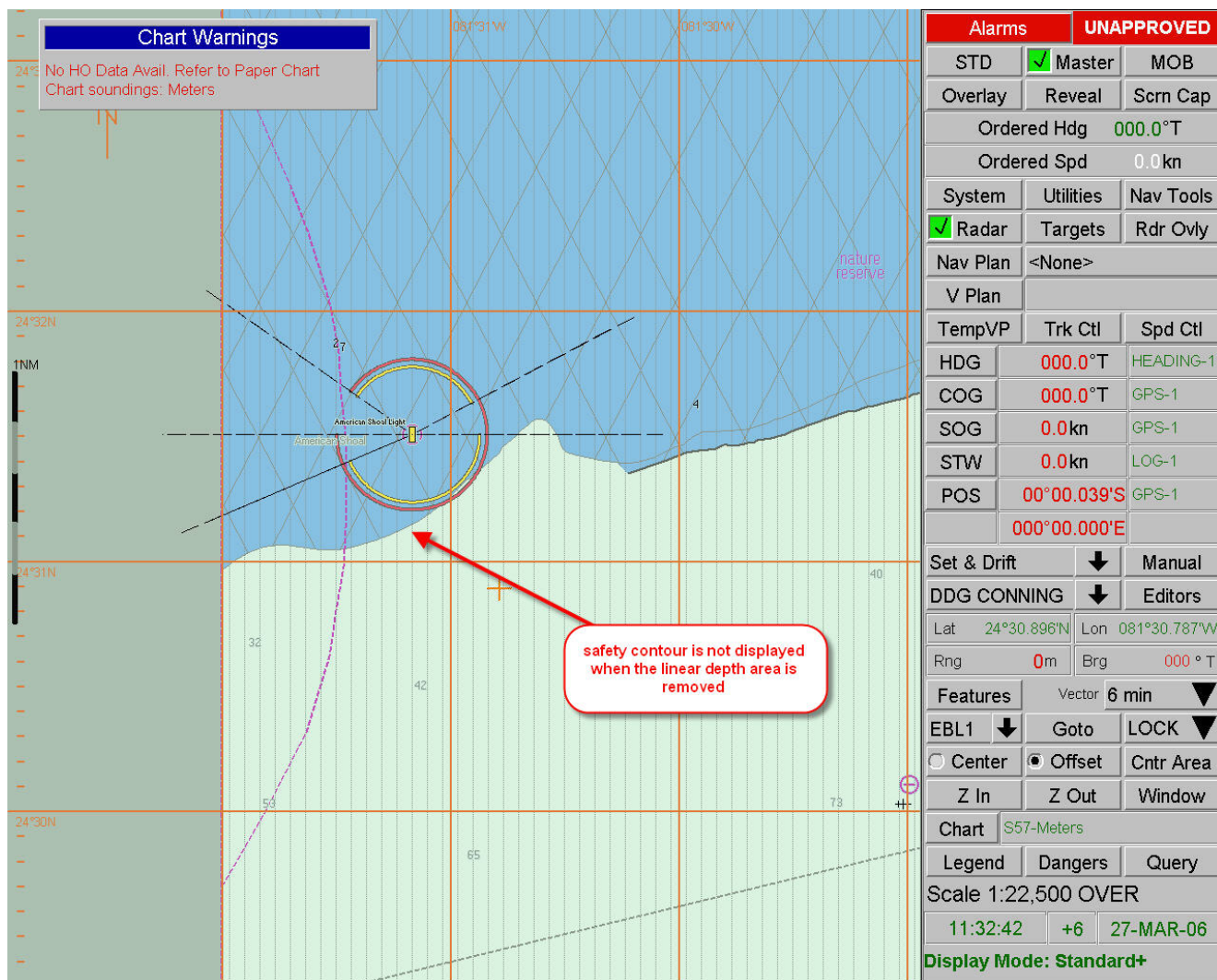
**Sperry Marine VMS-VT                      Version 7.6.636**  
**SevenCs Presentation Library v3.2.2 22/10/2001**

(Cell with linear depth area)



**Sperry Marine VMS-VT** **Version 7.6.636**  
**SevenCs Presentation Library v3.2.2 22/10/2001**

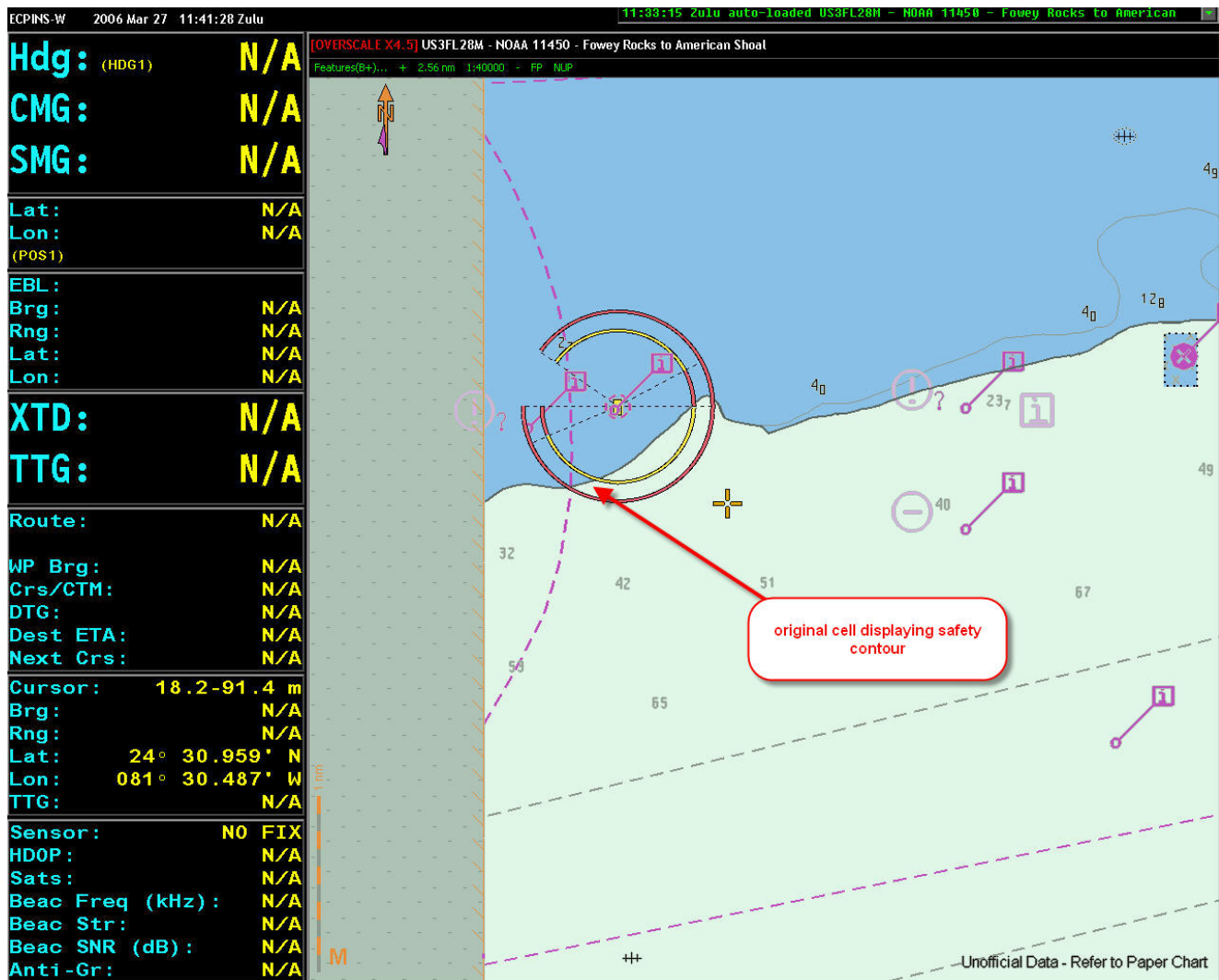
(Cell without linear depth area)



## Offshore Systems ECPINS-W Presentation Library v3.3

Version 5.0.4

(Cell with linear depth area)



(Cell without linear depth area)

