



The University of Southern Mississippi Department of Marine Science  
 ECDIS Laboratory  
 1020 Balch Blvd  
 Stennis Space Center, MS. 39529  
 228-688-2383

## ENC PILOT WORK – ASL OBJECTS ECDIS DISPLAY (Version 2)

**Sperry Marine VMS-VT** **Version 7.6.636**  
**SevenCs Presentation Library v3.2.2 22/10/2001**

No report of any problems installing cell in VMS.

VMS Chart Legend

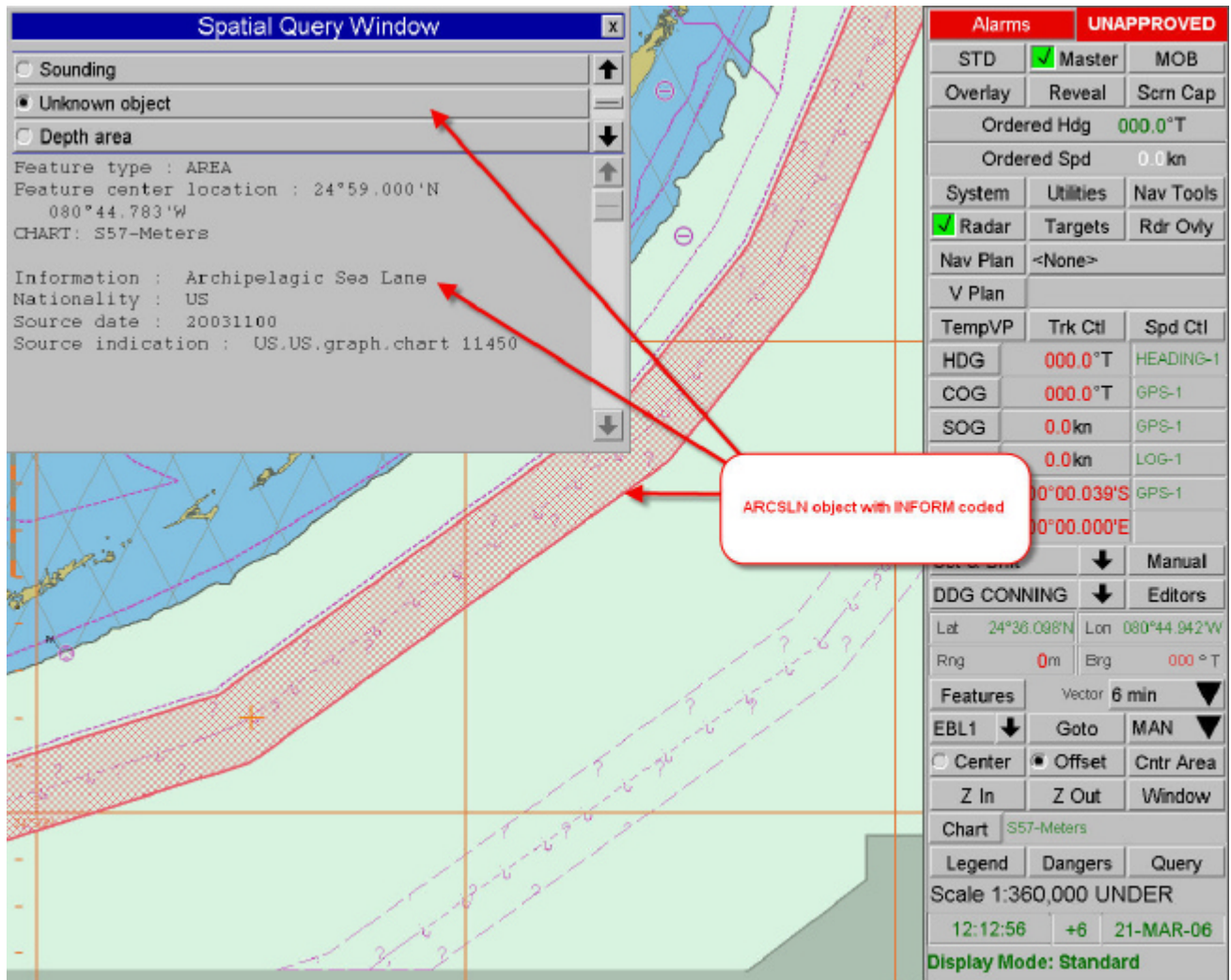
**Chart Legend**

Name :  
 Number : Meters  
 Component Name : US3FL28M.7CB  
 Data Provided by : US  
 Default Scale : 1:180,000  
 Nav Purpose : COASTAL  
 Edition Date : 01-MAR-2006  
 Update Date : 14-OCT-2005  
 Update Number : 0  
 Last Notice To Mariner : Unknown  
 Edition : 3  
 Volume : Unknown  
 Projection : Mercator  
 Horizontal datum : World Geodetic System 1984  
 WGS84 Shift : 00°00.000'N, 000°00.000'E  
 Vertical Datum : Mean High Water  
 Sounding Datum : Mean Lower Low Water  
 Magnetic Variation : Unknown  
 Safety Depth : 5 Meters  
 Safety Contour : 5.4 Meters  
 Data Quality Zone(s) of Confidence : U (unassessed)  
 Display Depth Units : Meters  
 Display Height Units : Meters  
 Data Format : S57  
 Data Format Version : 3.1  
 GeoSym Version : 4  
 Display unit set name : None

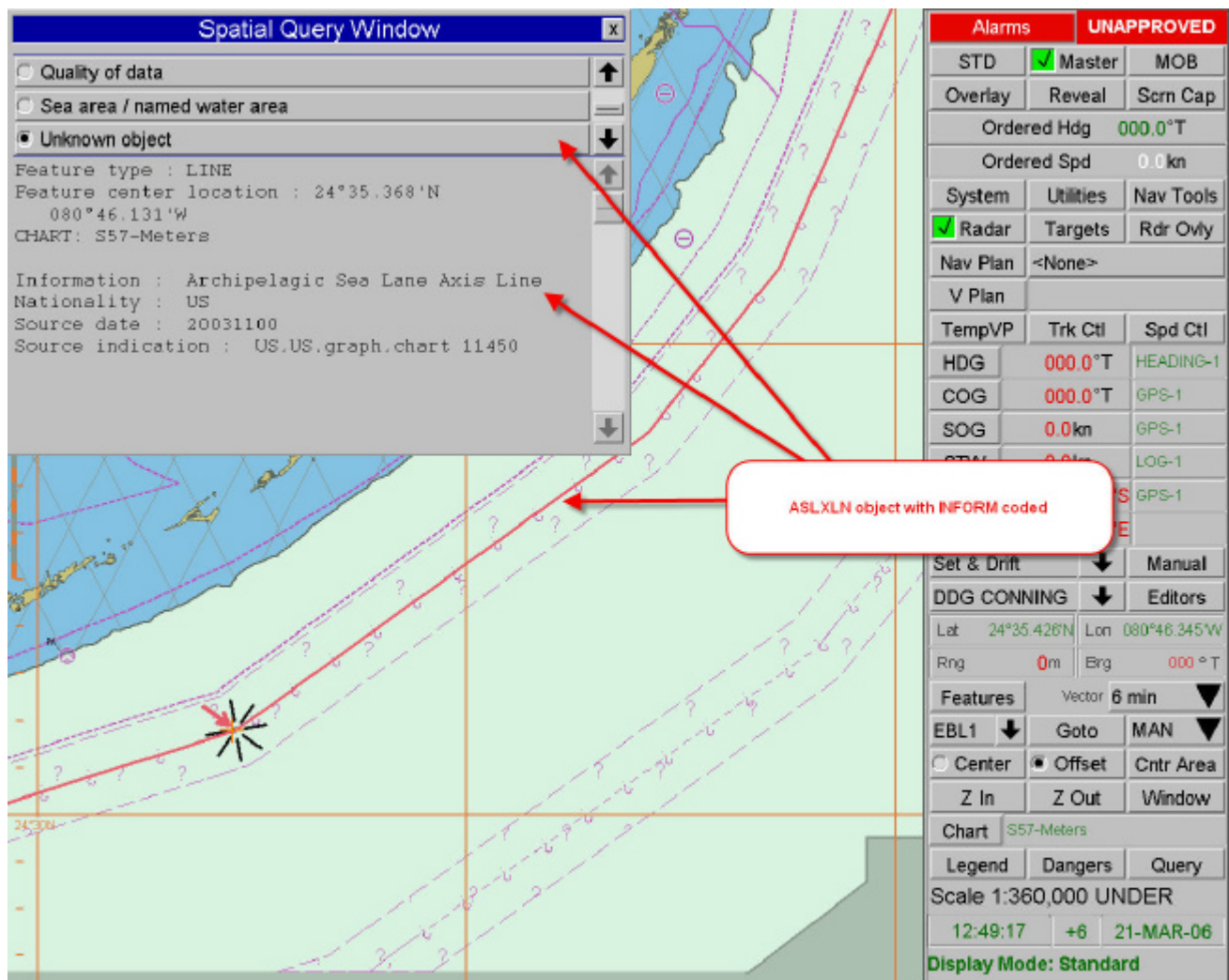
**Alarms** **UNAPPROVED**

STD	<input checked="" type="checkbox"/> Master	MOB
Overlay	Reveal	Scrn Cap
Ordered Hdg		000.0°T
Ordered Spd		0.0kn
System	Utilities	Nav Tools
<input checked="" type="checkbox"/> Radar	Targets	Rdr Ovl
Nav Plan <None>		
V Plan		
TempVP	Trk Ctl	Spd Ctl
HDG	000.0°T	HEADING-1
COG	000.0°T	GPS-1
SOG	0.0kn	GPS-1
STW	0.0kn	LOG-1
POS	00°00.039'S	GPS-1
		000°00.000'E
Set & Drift	↓	Manual
DDG CONNING	↓	Editors
Lat	25°13.004N	Lon 080°21.904'W
Rng	0m	Brg 000°T
Features	Vector 6 min	
EBL1	↓	Goto MAN
<input type="radio"/> Center	<input checked="" type="radio"/> Offset	Cntr Area
Z In	Z Out	Window
Chart S57-Meters		
Legend	Dangers	Query
Scale 1:360,000 UNDER		
12:59:26	+6	21-MAR-06
Display Mode: Standard		

The ARCSLN area object displayed with limit line and question marks. Object name displayed as “unknown object”, no problem displaying object attributes.

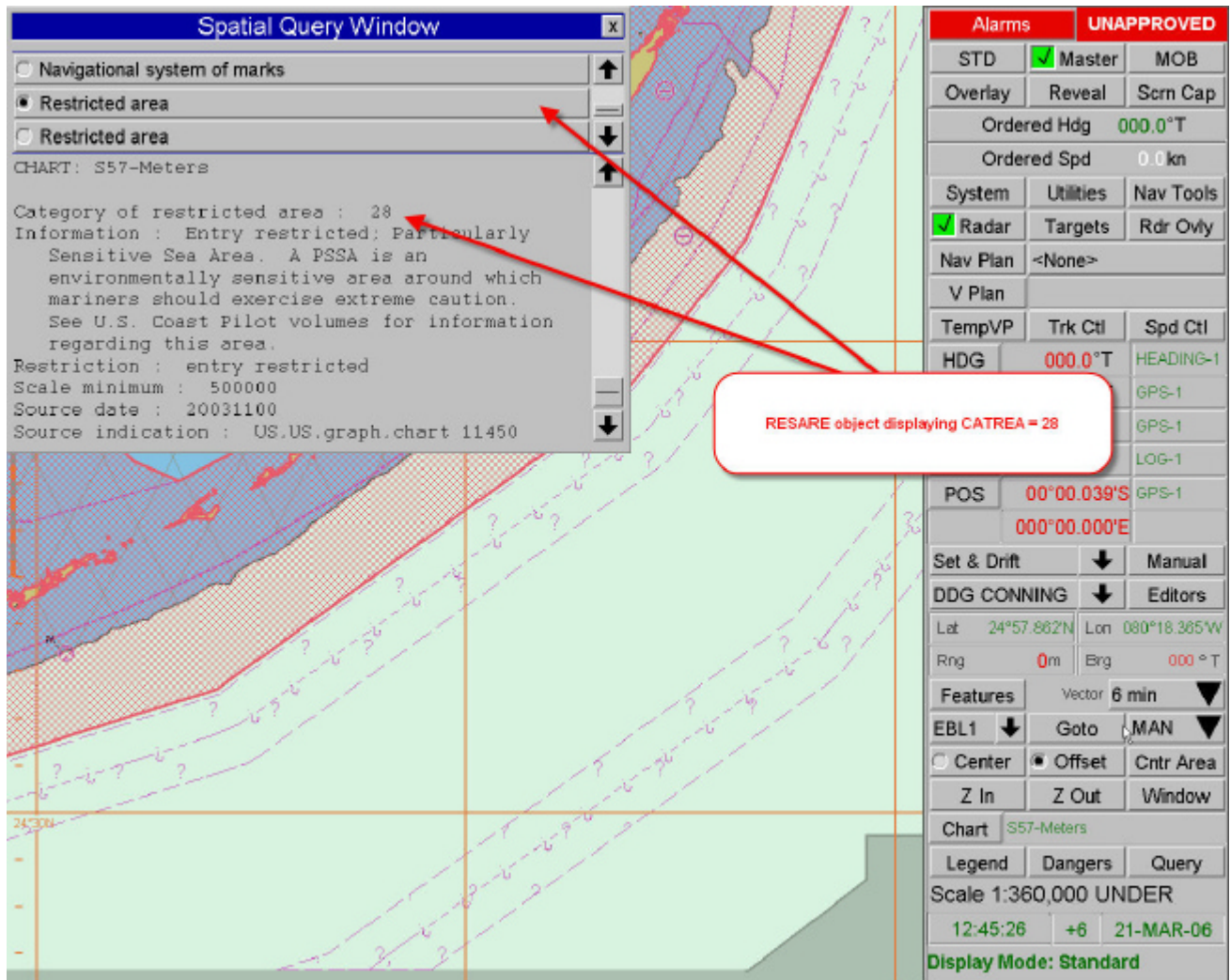


The ASLXLN line object displayed with question marks. Object name displayed as “unknown object”, no problem displaying object attributes.





RESARE object displayed accordingly. CATREA displayed as “28”.

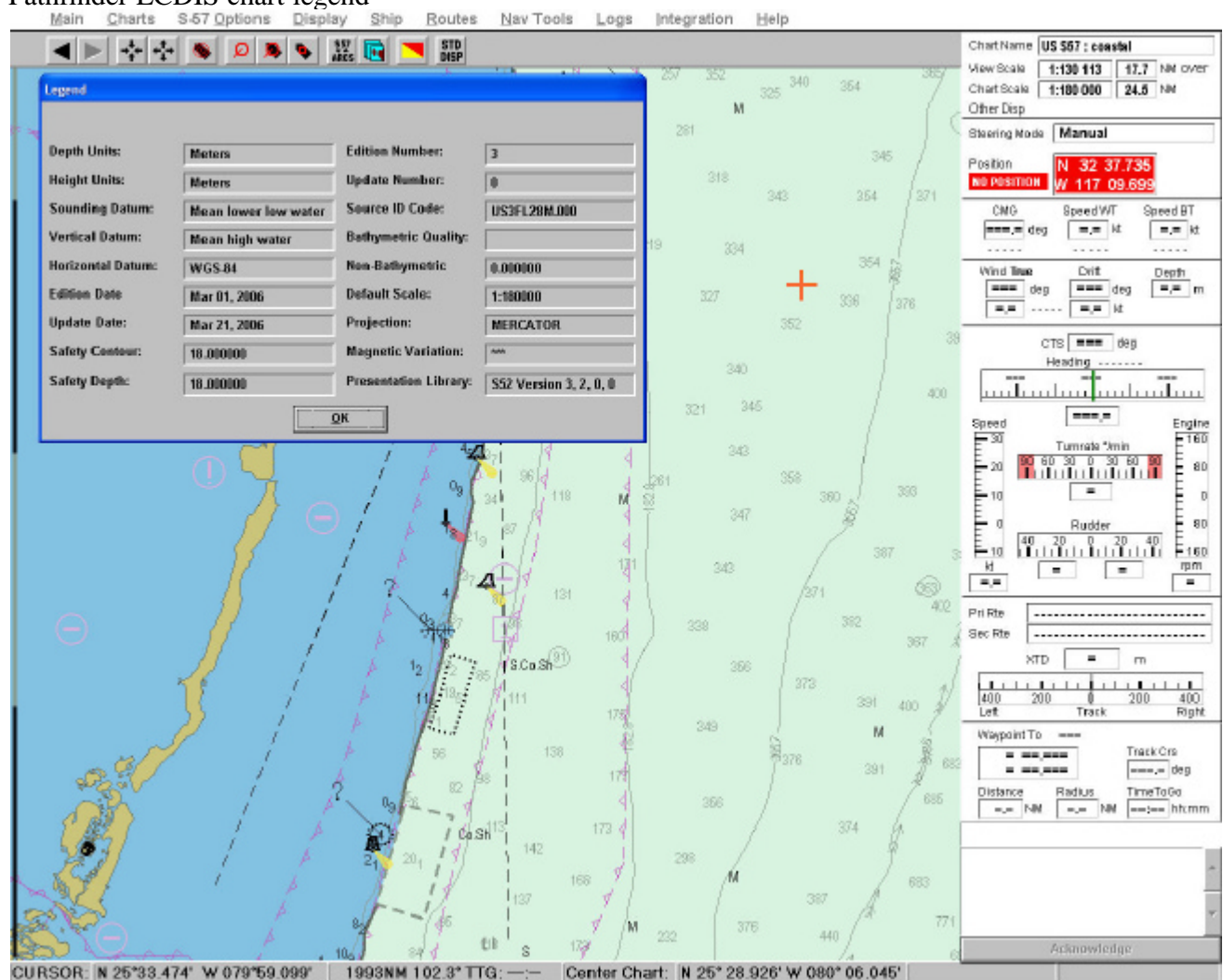


# Raytheon Pathfinder/ST ECDIS Version E02.06

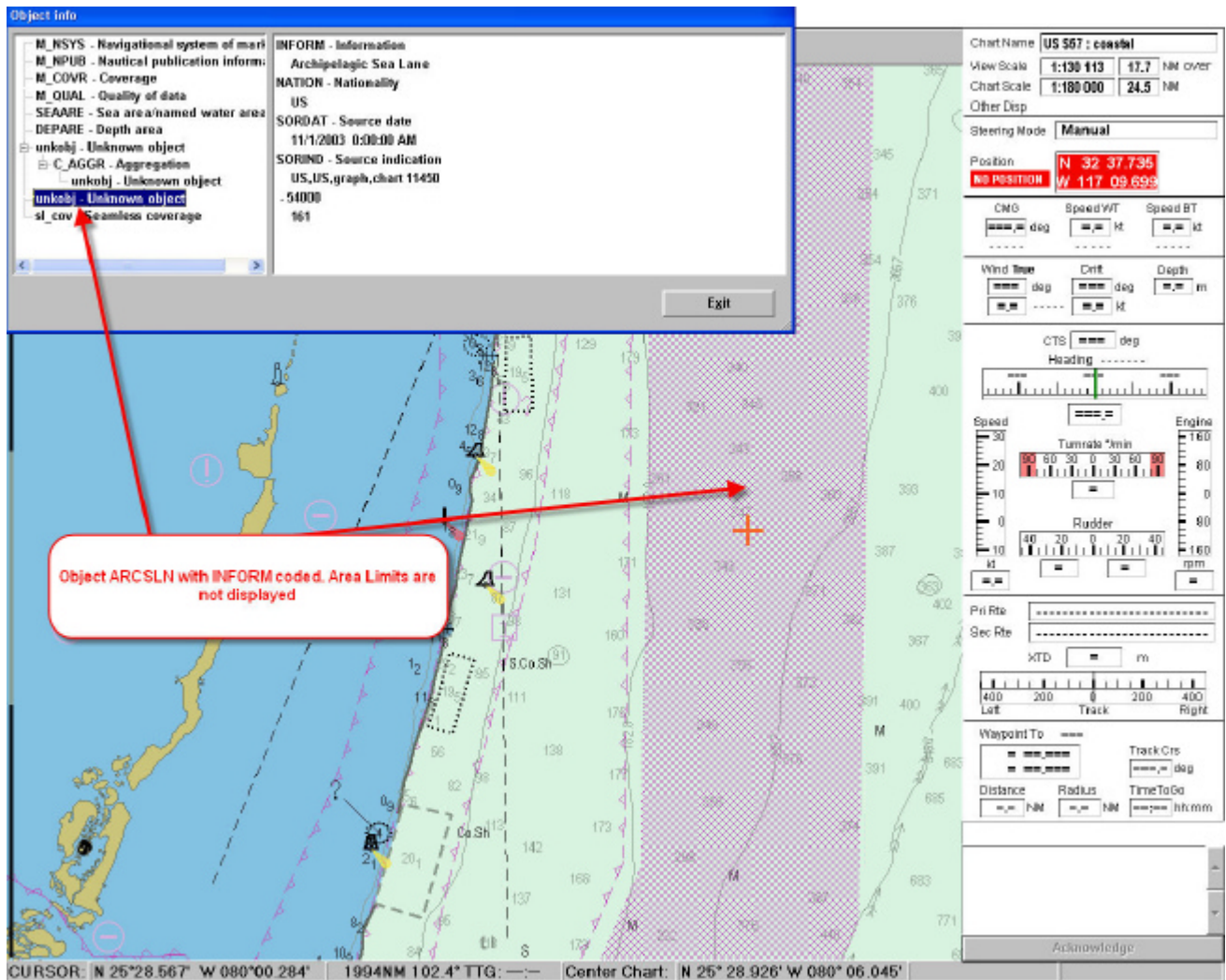
## Presentation Library v3.2.0

See [Pathfinder reports\US3FL28M.L00](#) for errors reported installing this cell. File can be open in any text editor.

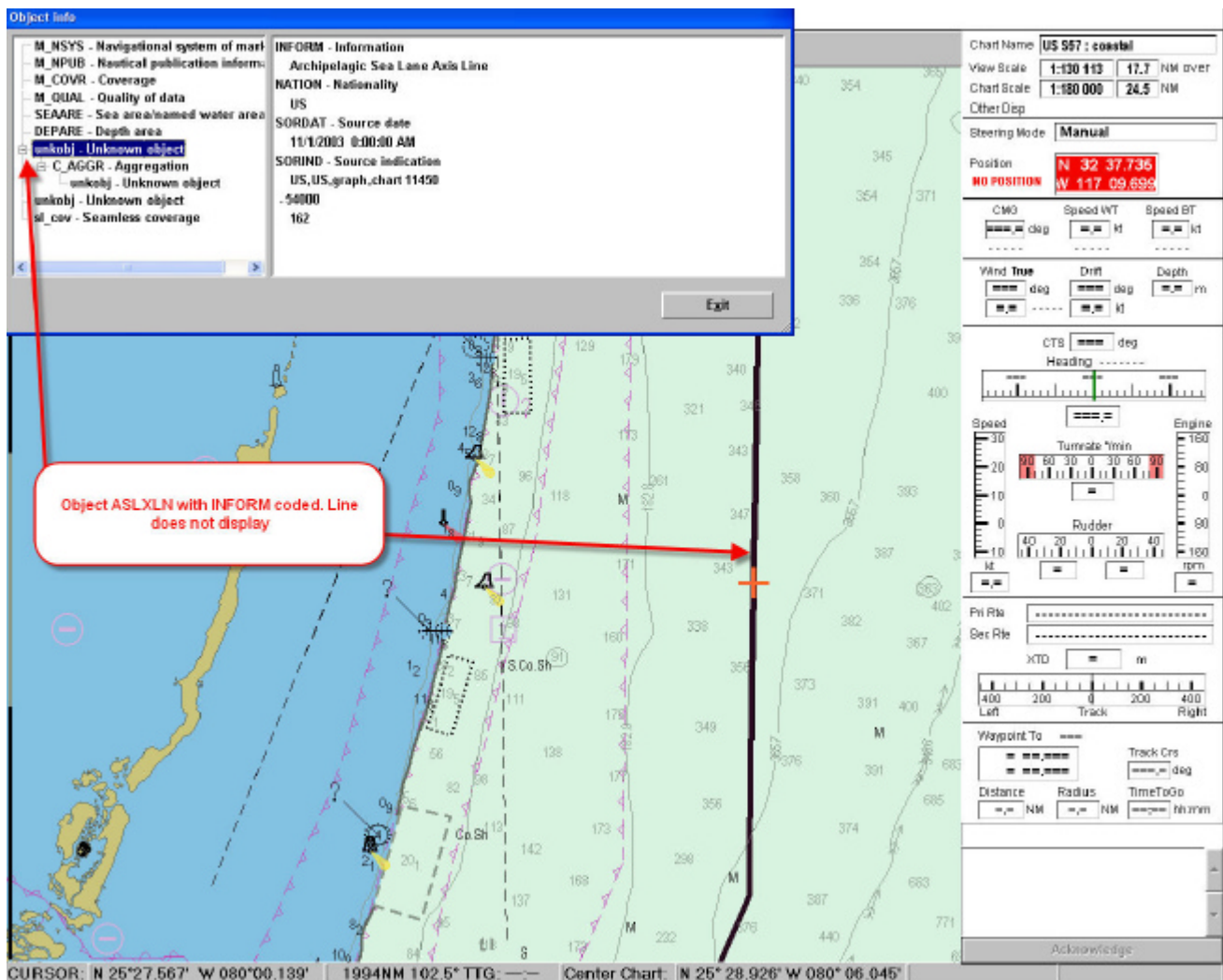
Pathfinder ECDIS chart legend



No limit or question marks were displayed for ARCSLN area object. Object name displayed as “unkobj - unknown object”, no problem displaying object attributes.

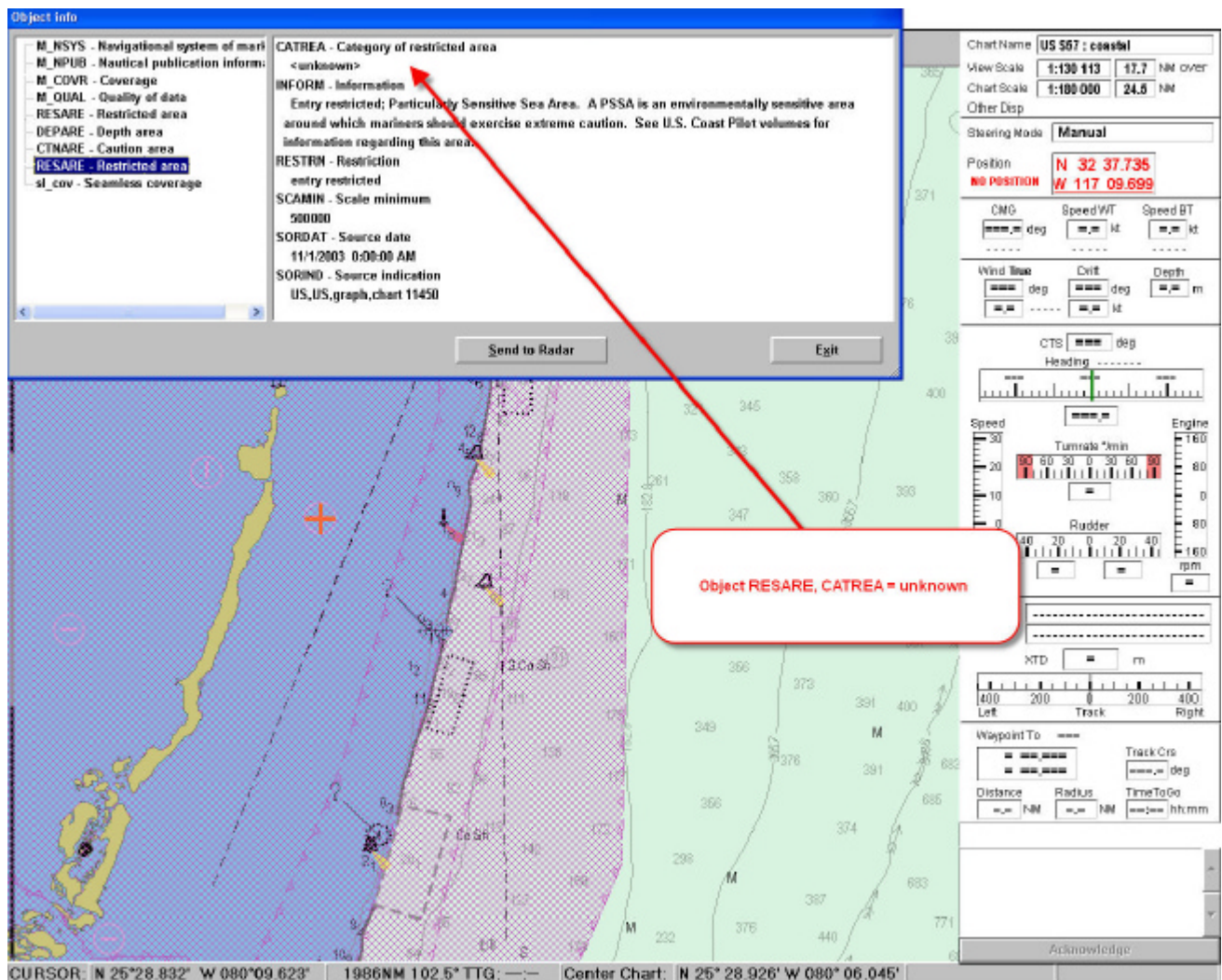


No line or question marks were displayed for ASLXLN line object. Object name displayed as “unkobj - unknown object”, no problem displaying object attributes.





RESARE displayed accordingly. CATREA displayed as unknown.



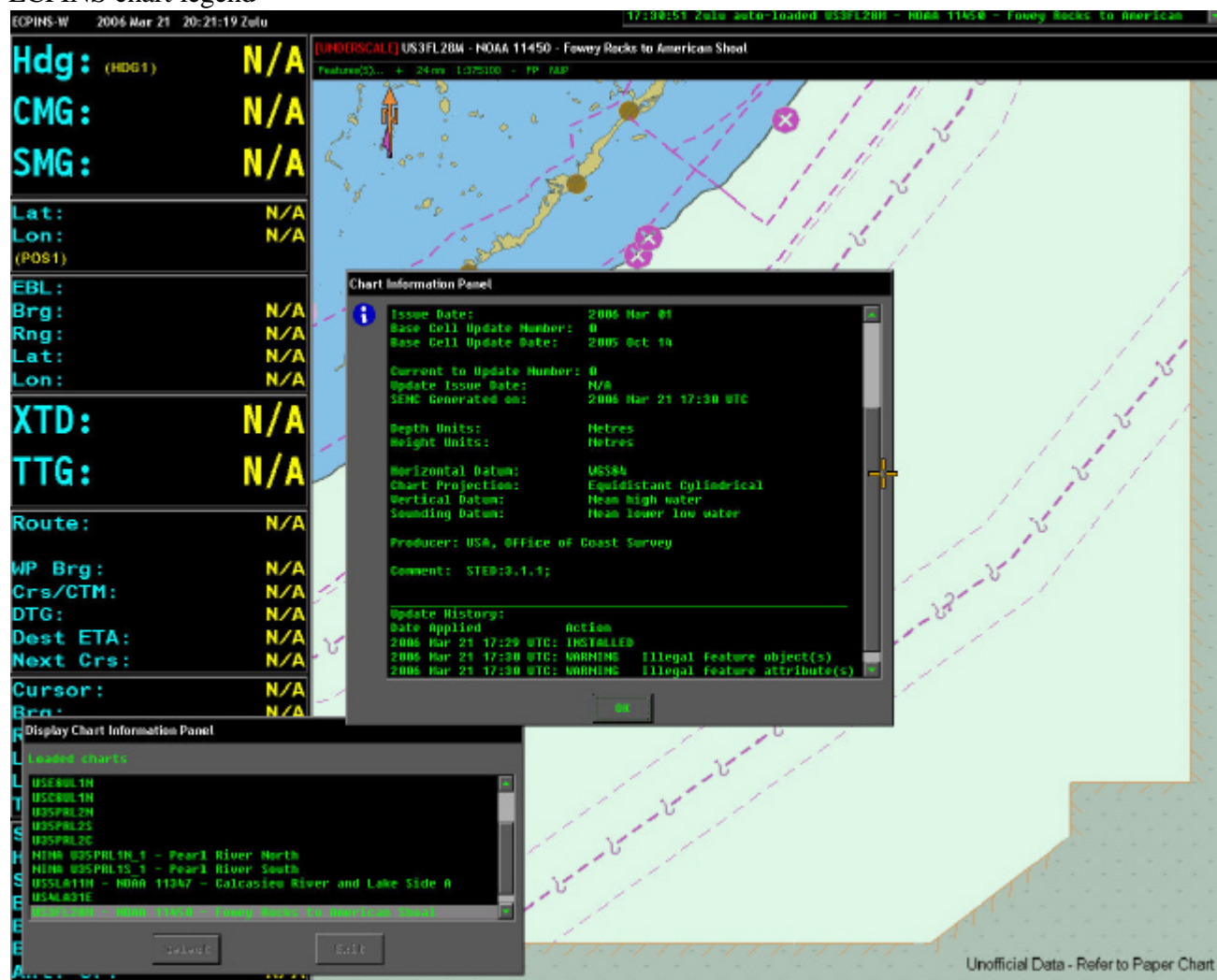


# Offshore Systems ECPINS-W Presentation Library v3.3

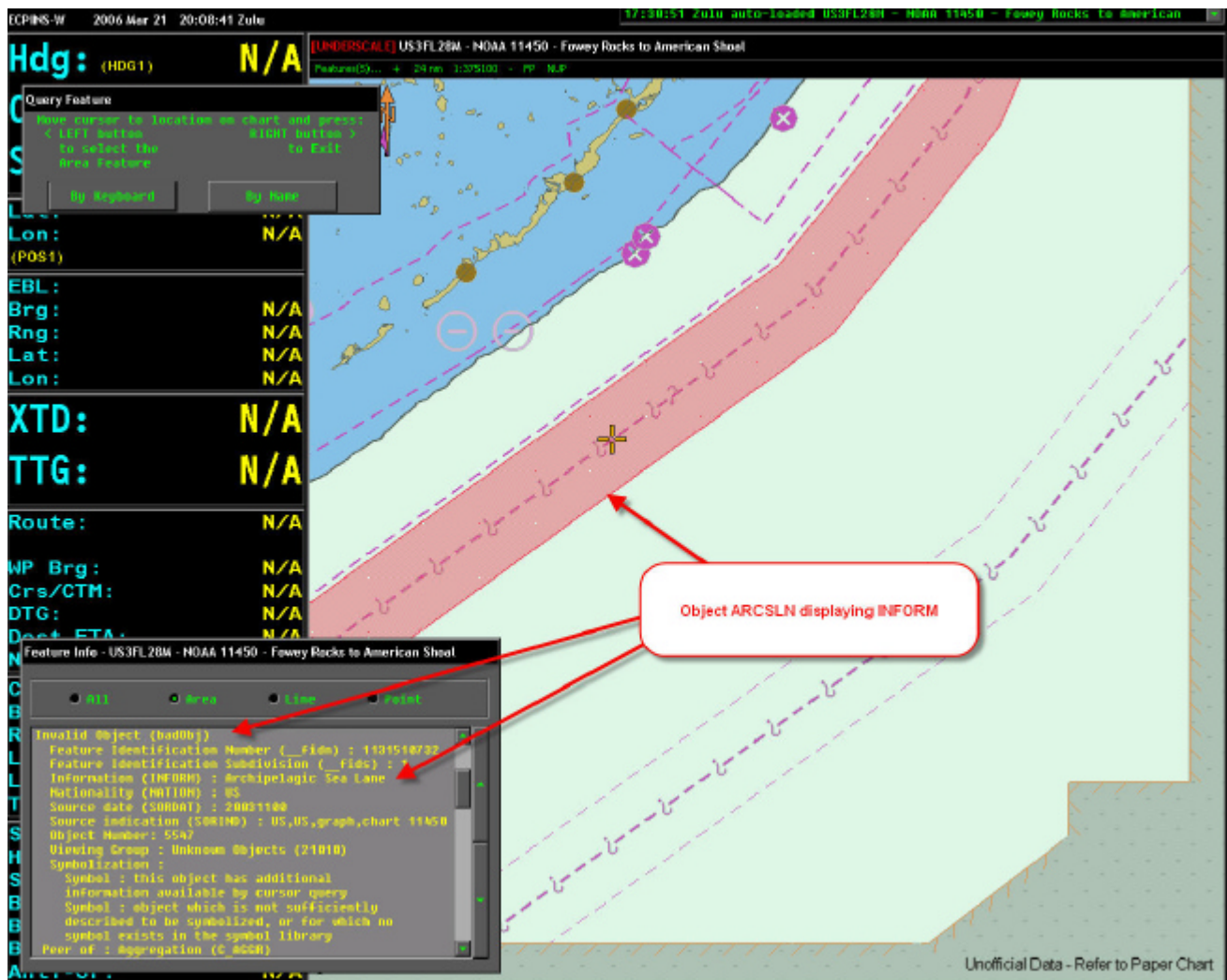
Version 5.0.4

See [ECPINS reports\stdout.log](#) for warnings reported installing this cell.

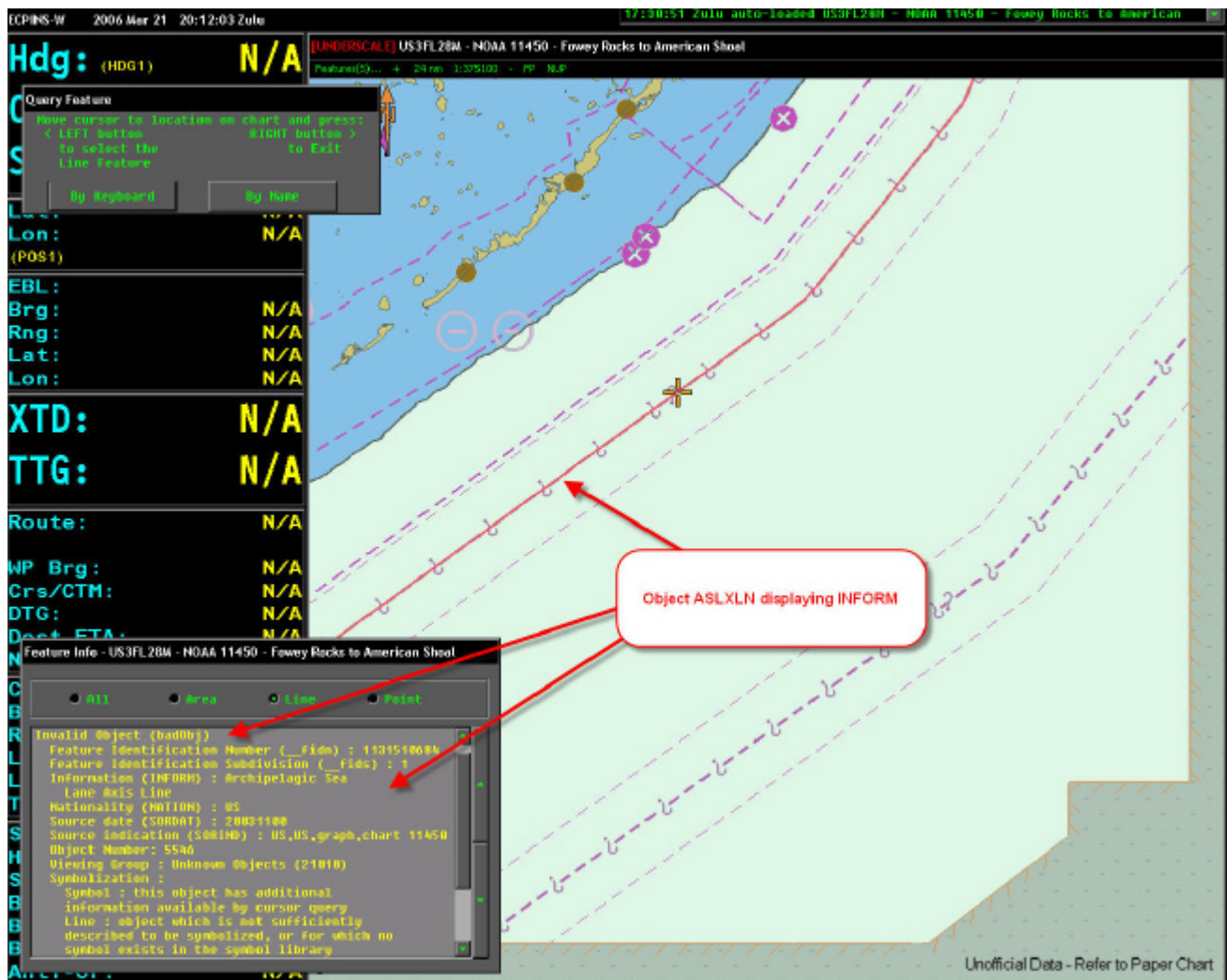
ECPINS chart legend



The ARCSLN area object displayed with limit line and question mark. In the feature information panel the object name was displayed as “Invalid Object (badobj)”. No problem displaying the object attributes.

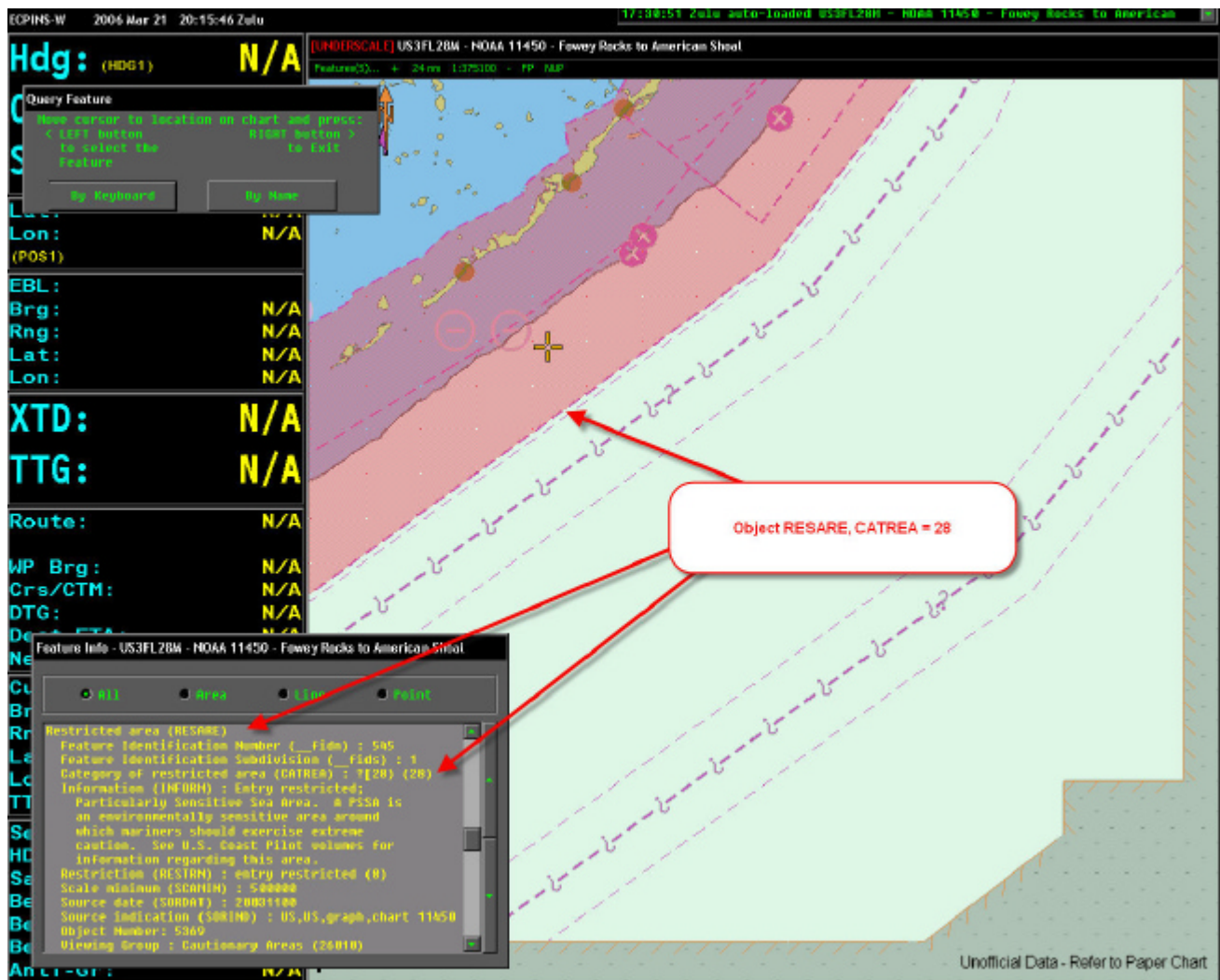


The ASLXLN line object displayed with question marks. In the feature information panel the object name was displayed as “Invalid Object (badobj)”. No problem displaying the object attributes.





RESARE object displayed accordingly. Attribute for CATREA displayed as ?(28) (28).



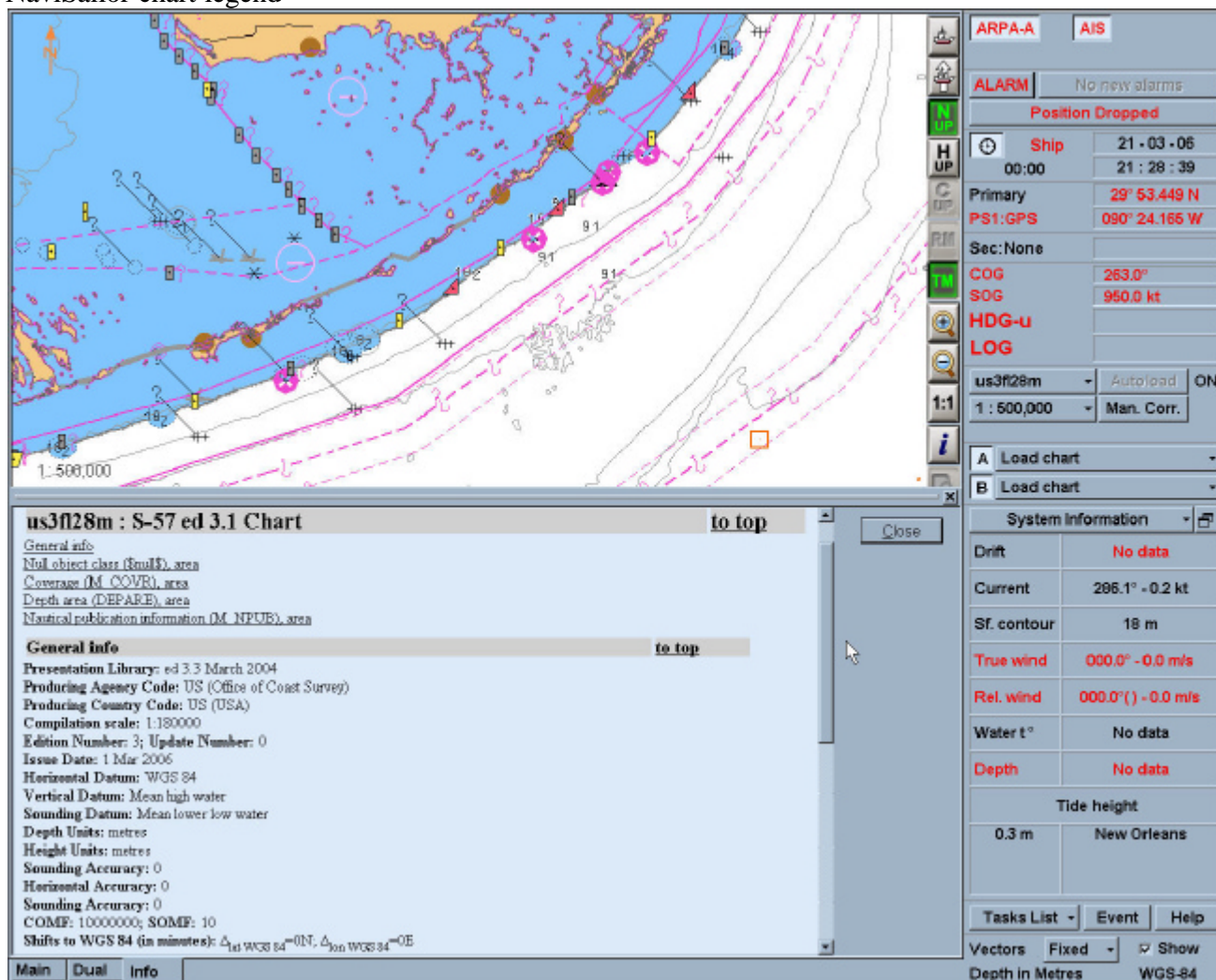
# Transas NavSailor 3000-I

## Version 4.00.05

### Presentation Library v3.3 March 2004

See [Navisailor reports\US3FL28M.lst](#) for errors reported installing this cell. File can be open in any text editor.

NaviSailor chart legend



The ARCSLN object displayed with limit line and question marks. No attributes were displayed for this object.

The screenshot displays a maritime navigation software interface. The main map area shows a coastal region with various navigational markers and depth contours. A red box highlights a specific object on the map, with a callout indicating it is an 'ARCSLN object, no attributes'. The bottom panel provides detailed information about the selected object and system status.

**Object Details:**

- Null object class (\$null\$), line** (to top)
- Null object class (\$null\$), area** (to top)
- Coverage (M\_COVR), area** (to top)
  - Category of coverage (CATCOV): 1 (coverage available)
  - Source date (SORDAT): 20031100
  - Source indication (SORIND): US,US\_graph,chart 11450
- Depth area (DEPARE), area** (to top)
  - Depth range value 1 (DRVAL1): 182.8
  - Depth range value 2 (DRVAL2): 365.7
  - Source date (SORDAT): 20031100
  - Source indication (SORIND): US,US\_graph,chart 11450

**System Information:**

- Drift:** No data
- Current:** 286.1° - 0.2 kt
- Sf. contour:** 18 m
- True wind:** 000.0° - 0.0 m/s
- Rel. wind:** 000.0°() - 0.0 m/s
- Water t°:** No data
- Depth:** No data
- Tide height:** 0.3 m, New Orleans

**Tasks List:** Event, Help

**Vectors:** Fixed, Show

**Depth in Metres:** WGS-84



The ASLXLN line object displayed with question marks. No attributes were displayed for this object.

The screenshot displays a maritime navigation software interface. The main map area shows a coastal region with various navigational markers and depth contours. A red callout box with the text "ASLXLN object no attributes" points to a specific line object on the map. Below the map, a detailed attribute panel is visible, listing several object classes and their attributes. The panel includes sections for "Null object class (\$nullS), line", "Null object class (\$nullS), area", "Coverage (M\_COVR), area", "Depth area (DEPARE), area", and "Depth area (DEPARE), area". The right-hand side of the interface features a sidebar with various system information, including ship status, position, speed, and tide data.

**ASLXLN object no attributes**

**Null object class (\$nullS), line**  
[Highlight](#)  
 to top

**Null object class (\$nullS), area**  
[Highlight](#)  
 to top

**Coverage (M\_COVR), area**  
[Highlight](#)  
 Category of coverage (CATCOV) : 1 (coverage available)  
 Source date (SORDAT) : 20031100  
 Source indication (SORIND) : US,US\_graph,chart 11450  
 to top

**Depth area (DEPARE), area**  
[Highlight](#)  
 Depth range value 1 (DRVAL1) : 182.8  
 Depth range value 2 (DRVAL2) : 365.7  
 Source date (SORDAT) : 20031100  
 Source indication (SORIND) : US,US\_graph,chart 11450  
 to top

**Depth area (DEPARE), area**  
 to top

**System Information**

Drift	No data
Current	286.1° - 0.2 kt
Sf. contour	18 m
True wind	000.0° - 0.0 m/s
Rel. wind	000.0°() - 0.0 m/s
Water t°	No data
Depth	No data
Tide height	
0.3 m	New Orleans

**Tasks List** | **Event** | **Help**

Vectors **Fixed** | ☒ Show  
 Depth in Metres **WGS-84**

RESARE object displayed accordingly. Attribute for CATREA displayed as “BLANK”.

