

**IHO CSMWG 16
IHB Monaco 29-31 May 2006**

**REPORT by IC-ENC on S-57 E3.1.1 tests conducted with various
ECDIS.**

From: Fowle Richard
Sent: Friday, March 31, 2006

I would like to express concern that the implementation of the changes in S57 3.1.1 is not going to be as simple as first envisaged. I have loaded the latest version of the test data set into three different ECDIS systems, none of which have handled the new objects as one would have hoped.

TRANSAS NAVISAILOR 3000:-

ARCSLN - Displayed as area bounded by magenta pecked lines and with floating '?' area fill. When interrogated \$NULL object reported but no attribute values displayed.

ASLXLN - Displayed as magenta pecked lines with '?' pattern. When interrogated \$NULL object reported but no attribute values displayed.

GENOBJ - Point - Displayed as magenta "?". When interrogated \$NULL object reported but no attribute values displayed.

- **Line** - Displayed as magenta pecked line with "?" pattern. When interrogated \$NULL object reported but no attribute values displayed.

- **Area** - Displayed as area with magenta pecked boundary with floating "?" pattern fill. When interrogated \$NULL object reported but no attribute values displayed.

RESARE, CATREA 28 - Displayed as area bounded by magenta pecked lines. When interrogated CATREA reported as 'BLANK' and INFORM correctly displayed.

KELVIN HUGHES ZM1816 V3.2:-

ARCSLN - Displayed as area bounded by magenta pecked lines and with floating '?' area fill. When interrogated no object reported.

ASLXLN - Displayed as magenta pecked lines with '?' pattern. When interrogated no object reported.

GENOBJ - Point - Displayed as magenta "?". When interrogated no object reported.

- **Line** - Displayed as magenta pecked line with "?" pattern. When interrogated no object reported.

- **Area** - Displayed as area with magenta pecked boundary with floating "?" pattern fill. When interrogated no object reported.

RESARE, CATREA 28 - Displayed as area bounded by magenta pecked lines. When interrogated CATREA reported as 'BLANK' and INFORM correctly displayed.

ASPO SYSTEMS/NAVINTRA EC1000 03.00:-

ARCSLN - Nothing displayed. When interrogated no object reported.

ASLXLN - Nothing displayed. When interrogated no object reported.

GENOBJ - Point - Displayed as red circle. When interrogated 'Danger Highlight' object reported no attributes displayed.

- **Line** - Displayed as red solid line. When interrogated 'Danger Highlight' object reported no attributes displayed.

- **Area** - Displayed as area with solid red line boundary with red infill. When interrogated 'Danger Highlight' object reported no attributes displayed.
RESARE, CATREA 28 - Displayed as area bounded by magenta pecked lines. When interrogated CATREA reported as 'BLANK' and INFORM correctly displayed.

(See attached screen dumps of ECDIS displays)

As you can see none of the above systems enabled the user to interrogate the new objects attribute INFORM so it was impossible to discover what the objects were, and one did not display anything at all for the ARCSLN and ASLXLN. I therefore do not believe this revision meets the requirement of the IMO to adequately display these new features.

Although not related to the new objects and attributes, may I also suggest a change to text on page 6
From

Remarks:

The official legal status of each kind of restricted area defines the kind of restriction(s), e.g. the restriction for a 'game preserve' may be 'entering prohibited', the restriction for an 'anchoring prohibition area' is 'anchoring prohibited'.

To

Remarks:

The official legal status of each kind of restricted area defines the kind of restriction(s), e.g. the restriction for a 'game reserve' may be 'entering prohibited'.

Best Regards

Richard Fowle

Technical Manager
International Centre for ENCs
+44 1823 723390
+44 1823 723347 (fax)
richard.fowle@ic-enc.org

Only a selection of the IC-ENC graphics are attached as annexes to this Report

TRANSAS NAVISAILOR 3000

Display of proposed S-57 E3.1.1 object **ARCSLN**: object displayed with question marks but 'Null object class (\$null\$)' reported and accordingly, attribute **INFORM** was not displayed. (diagonal hatching is the Transas highlighting of the feature, not the symbology for the feature).

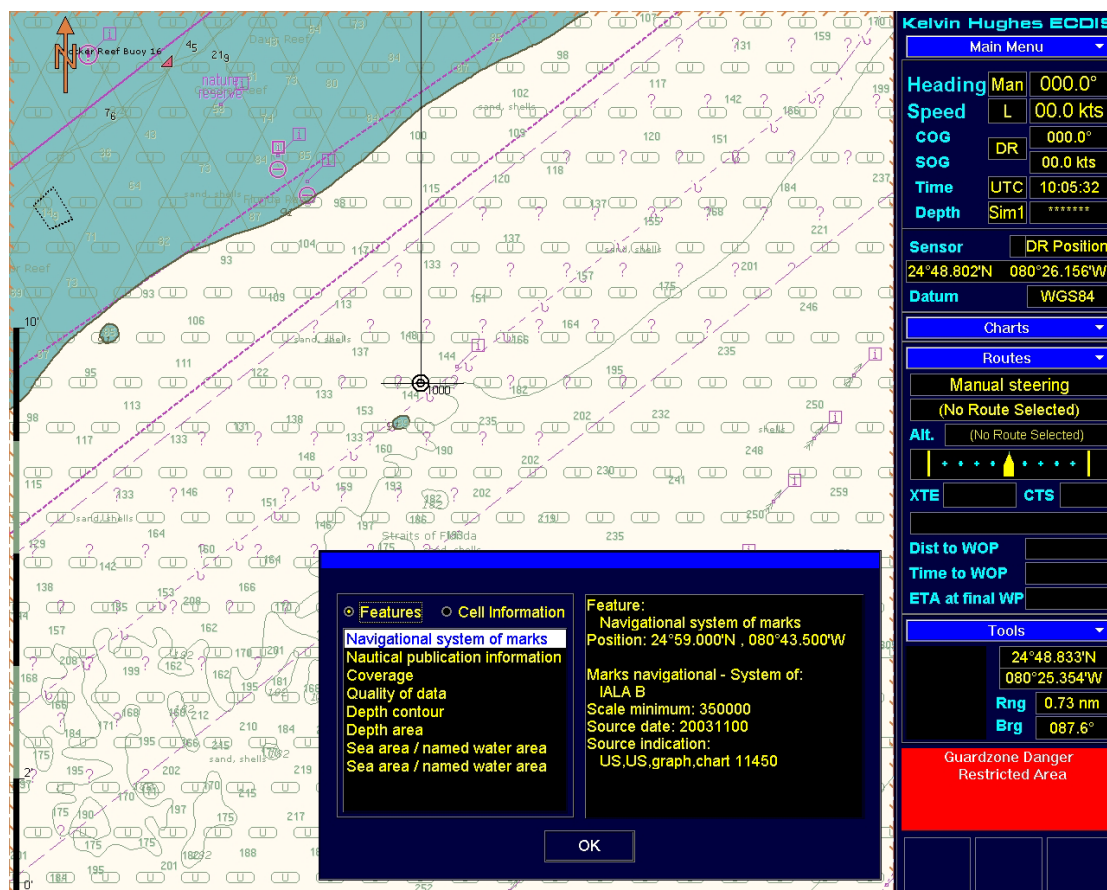
The screenshot displays the TRANSAS NAVISAILOR 3000 interface. The main window shows a nautical chart with a diagonal hatched area. A data panel on the right provides various parameters, and a bottom panel shows object details.

System Information	
Drift	No data
Current	044.7° - 1.6 kt
Sf. contour	18 m - 200 m
Tide height	0.4 m
Wind	No data
Water t°	No data
Depth	No data

Object Details	
Null object class (\$null\$), area	to top
Highlight	
Null object class (\$null\$), line	to top
Highlight	
Navigational system of marks (M_NSYS), area	to top
Highlight	
Marks navigational - System of (MARSYS) : 2 (IALA B)	
Scale minimum (SCAMIN) : 350000	
Source date (SORDAT) : 20031100	

KELVIN HUGHES ZM1816 V3.2

Display of proposed S-57 E3.1.1 object **ARCSLN**: feature displayed with question mark symbology, but no object was reported and accordingly the attribute INFORM was not displayed.

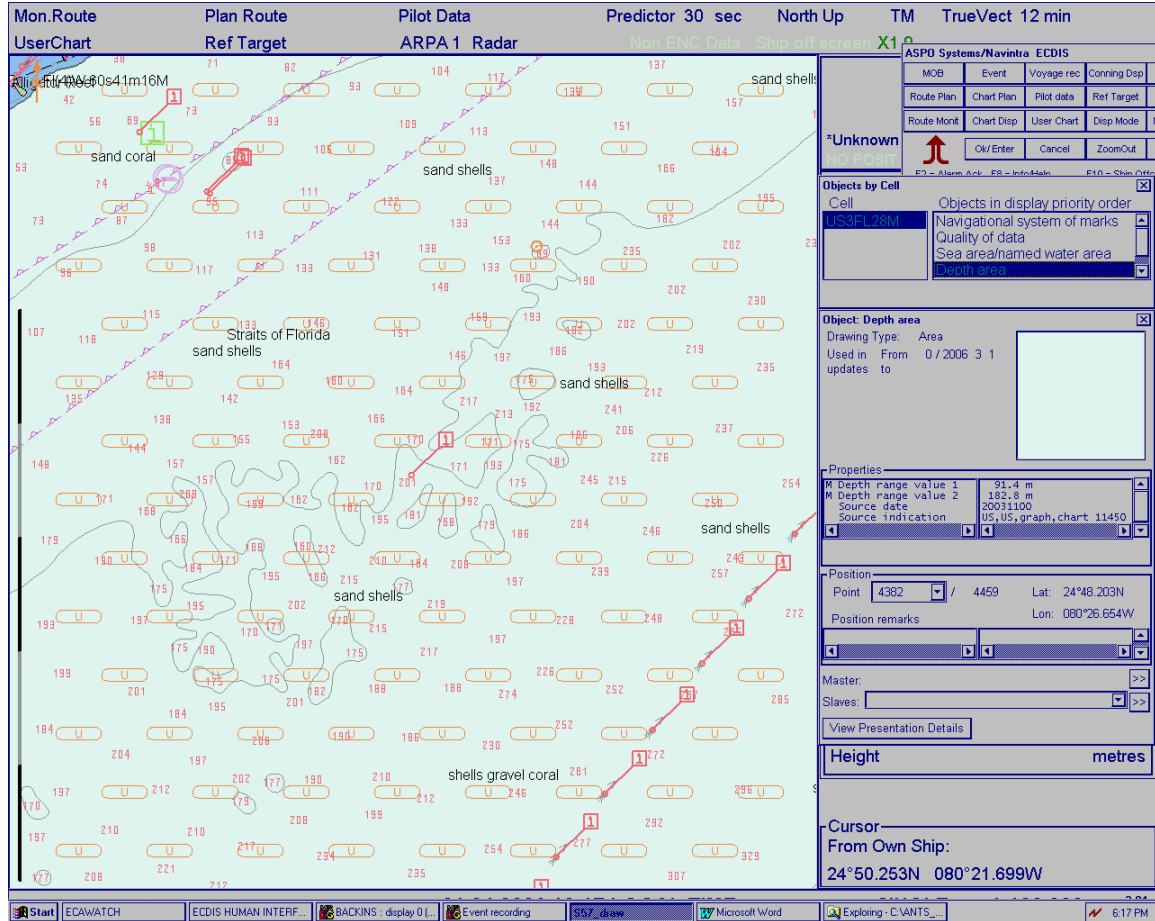


Display of proposed S-57 E3.1.1 object **GENOBJ**: again the feature was displayed using question mark symbology, but again no object was reported and accordingly the attribute INFORM was not displayed. The graphic could not be added to this report but will be available at the CSMWG meeting.

Annex C to IC-ENC Report

ASPO SYSTEMS/NAVINTRA EC1000 03.00

Display of proposed S-57 E3.1.1 object **ARCSLN**: no object was displayed nor reported and accordingly attribute INFORM was not displayed.



ASPO SYSTEMS/NAVINTRA EC1000 03.00

Display of proposed S-57 E3.1.1 object **GENOBJ**: object was displayed but not reported and accordingly attribute INFORM was not displayed. (see graphic next page)

Annex C to IC-ENC Report

ASPO SYSTEMS/NAVINTRA EC1000 03.00

Display of proposed S-57 E3.1.1 object **GENOBJ**: object was displayed but not reported and accordingly attribute **INFORM** was not displayed. (see graphic next page)

The screenshot displays the ASPO Systems/Navinttra ECDIS interface. The main chart area shows a coastal region with various navigational markers and a red rectangular object highlighted. The interface includes a menu bar at the top with options like 'Mon.Route', 'Plan Route', 'Pilot Data', 'Predictor 30 sec', 'North Up', 'TM', and 'TrueVect 12 min'. A toolbar on the right contains buttons for 'ASPO Systems/Navinttra ECDIS', 'MCB', 'Event', 'Voyage rec', 'Conning Disp', 'Info/Help', 'Std disp', 'Route Plan', 'Chart Plan', 'Pilot data', 'Ref Target', 'Initial Set', 'Sensors', 'Route Monit', 'Chart Disp', 'User Chart', 'Disp Mode', 'Nav Marks', 'Radar', and 'Kt'. A 'Ship off screen' indicator is visible. The 'Objects by Cell' panel shows 'Cell' and 'Objects in display priority order' with 'Danger highlight' selected. The 'Object: Danger highlight' panel shows 'Drawing Type: Area', 'Used in From 0/2006 3 1 updates to', and a red rectangular preview. The 'Position' panel shows 'Point 1 Con / 4', 'Lat: 25°13.225N', and 'Lon: 081°07.182W'. The 'Master:' and 'Slaves:' panels are also visible. The taskbar at the bottom shows 'Start', 'ECAWATCH', 'ECDIS HUMAN INTERF...', 'BACKINS : display 0...', 'Event recording', 'S57 draw', 'Microsoft Word', 'Exploring - C:\VANTS...', and the time '6:23 PM'.