



C&SMWG
16. Meeting, Monaco, May 2006

Presentation of new object classes

Olaf Wentzel, March 2006

SevenCs GmbH, Hamburg, Germany

Proposal of colours and symbols used to display the new object classes to be introduced in S-57 Ed. 3.1.1

1. Presentation of ESSA / PSSA

Revised INT1 of November 2005 specifies ESSA boundaries in green and PSSA boundaries in magenta colours (N 22). In the very likely case that an ESSA covers an intertidal area (example: the Dutch and German Wadden Sea), the green boundary will be nearly invisible on the intertidal green background. In addition the radar overlay is making use of greenish colours which would superimpose the boundaries. Therefore, only the magenta colour for the purpose of both ESSA and PSSA boundary visualisation in ECDIS is stated as useful option. The visualisation should be supplemented by a centred symbol of the text string “ESSA” or “PSSA”.

According to the proposed enhancements of the ENC Product Specification, area type ESSAs and PSSAs are encoded as objects of class RESARE, whereas point type ESSAs and PSSAs are encoded as objects of class CTNARE.

The following entries into the look up tables for ESSAs and PSSAs of point type and area type are proposed.

1.1 ESSA

Point: Point symbol “chinfo06”, display priority 4, over radar, display category STANDARD, viewing group 26050

```
"CTNARE", "", "SY(CHINFO06)", "4", "O", "STANDARD", "26050"
```

Area: Centered point symbol “essatext” with boundary linestyle “essapssa”, display priority 5, sub radar, display category STANDARD, viewing group 26010

```
"RESARE", "CATREA27", "SY(ESSATEXT);LC(ESSAPSSA)", "5", "S", "STANDARD", "26010"
```

1.2 PSSA

Point: Point symbol “chinfo06”, display priority 4, over radar, display category STANDARD, viewing group 26050

```
"CTNARE", "", "SY(CHINFO06)", "4", "O", "STANDARD", "26050"
```

Area: Centered point symbol “pssatext” with boundary linestyle “essapssa”, display priority 5, sub radar, display category STANDARD, viewing group 26010

```
"RESARE", "CATREA28", "SY(PSSATEXT);LC(ESSAPSSA)", "5", "S", "STANDARD", "26010"
```

1.3 Presentation example of ESSA and PSSA

These new look up table entries for ESSA and PSSA would result into the display presentation as shown in Fig. 1:

2. Presentation of ASL

The proposal for the display of ASL on ECDIS follows the specification for ASLs (M 17) revised INT1 of November 2005. The resulting look up table entry reads as follows:

2.1 Archipelagic Sea Lane

Area: Boundary linestyle “aslare01”, display priority 5, sub radar, display category OTHER, viewing group 35020

```
"ARCSLN", "", "LC(ASLARE01)", "5", "S", "OTHER", "35020"
```

2.2 Archipelagic Sea Lane Axis Line

Line: Dashed line, 2 pixels wide, colour CHMGF, display priority 5, sub radar, display category OTHER, viewing group 35020

```
"ASLXLN", "", "LS(DASH,2,CHMGF)", "5", "S", "OTHER", "35020"
```

2.3 Presentation example of ASL

These new look up table entries for ASL would result into the display presentation as shown in Fig. 2

3. Presentation of Generic Object

Because there’s no further information available (beside the value of the attribute INFORM), a question mark seems to be appropriate. To distinguish a generic object symbol from the standard “Non ENC object” symbol (magenta question mark), a grey question mark is proposed. The following entries into the look up tables for Generic Objects of point, line and area type are proposed.

3.1 Point

Point symbol “quesmrk2”, display priority 6, sub radar, display category STANDARD, viewing group 21020

```
"GENOBJ", "", "SY(QUESMRK2)", "6", "S", "STANDARD", "21020"
```

3.2 Line:

Line: Linestyle “quesmrk2”, display priority 6, sub radar, display category STANDARD, viewing group 21020

```
"GENOBJ", "", "LC(QUESMRK2)", "6", "S", "STANDARD", "21020"
```

3.3 Area:

Area: Centered point symbol “quesmrk2” with boundary linestyle “quesmrk2”, display priority 6, sub radar, display category STANDARD, viewing group 21020

```
"GENOBJ", "", "SY(QUESMRK2);LC(QUESMRK2)", "6", "S", "STANDARD", "21020"
```

3.4 Presentation example of Generic Objects

These new look up table entries for ASL would result into the display presentation as shown in Fig. 3.

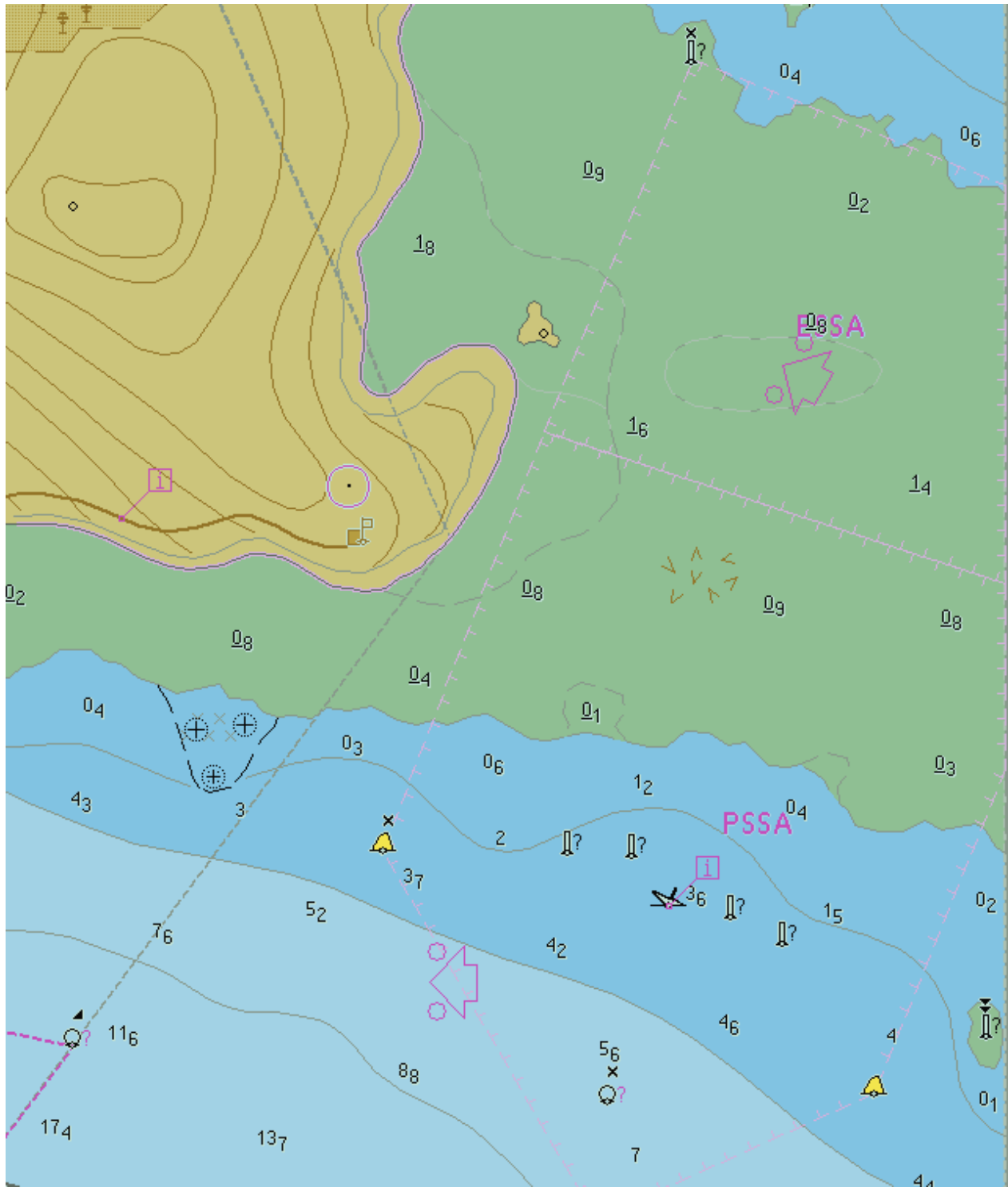


Fig 1. ESSA and PSSA (Centered Symbol and Boundary)

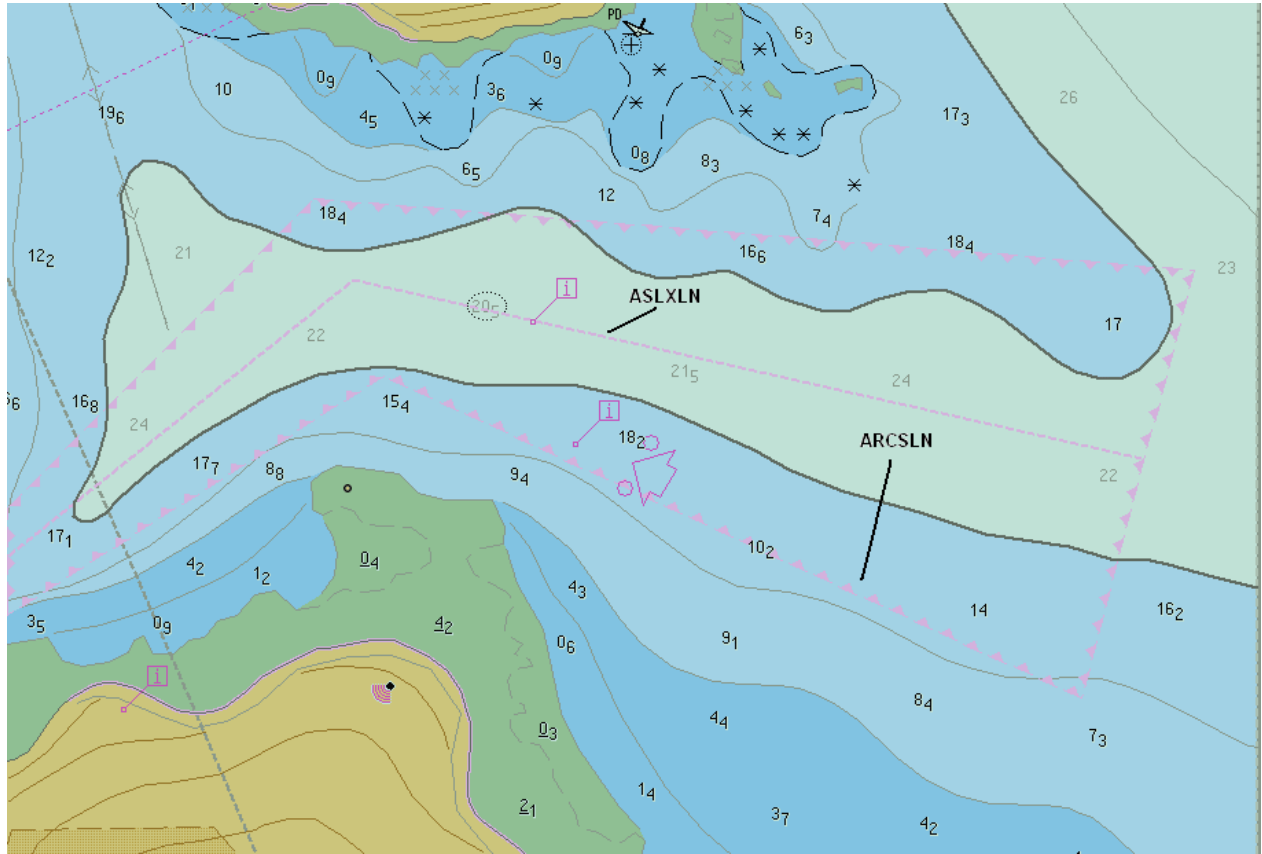


Fig. 2 ASL (Boundary and Axis Line)

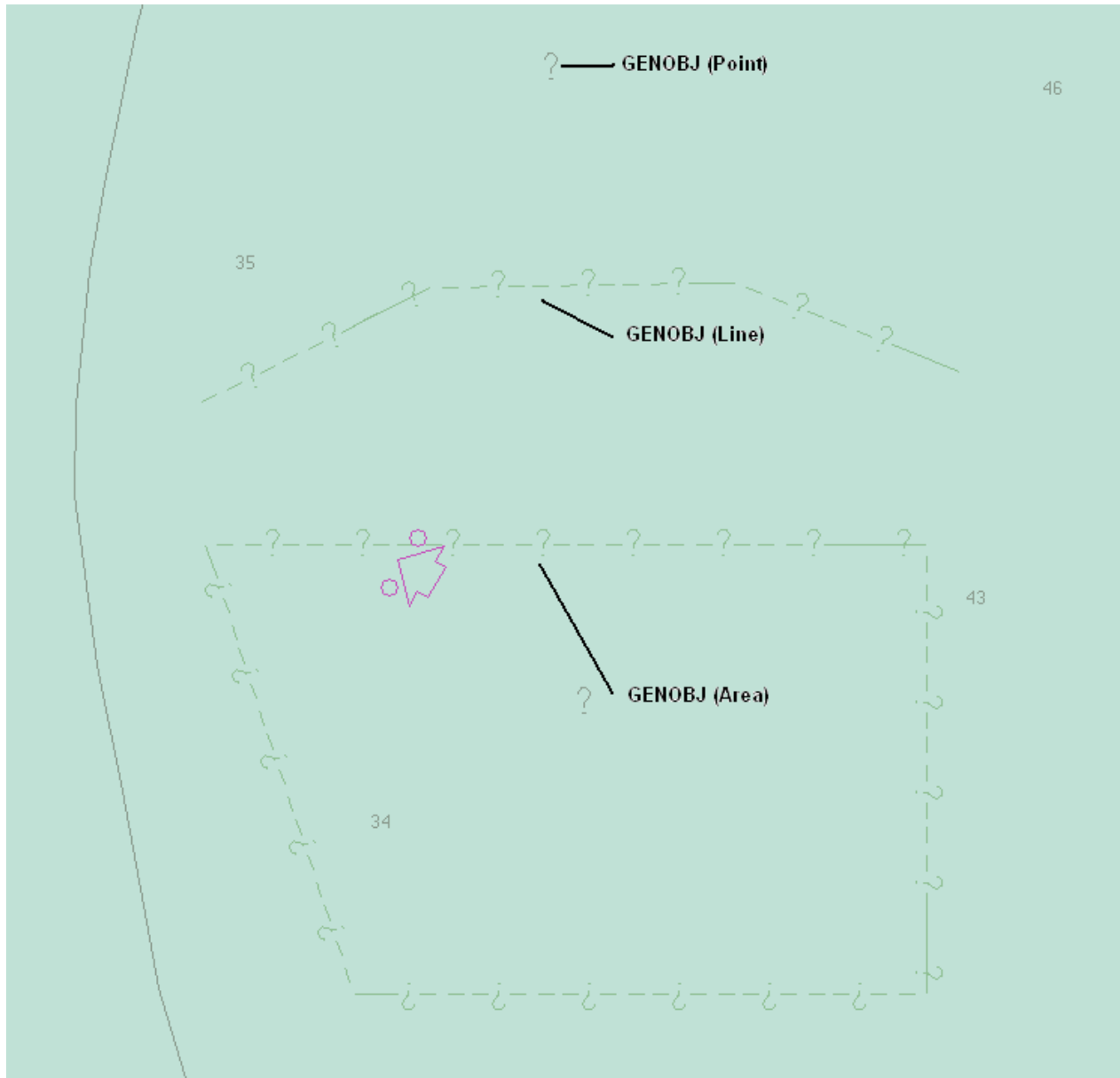


Fig. 3 Generic Objects (Point, Line, Area)