

Symbology for tide ways

Author : Pol Le Bihan, Geomod, France

The current situation:

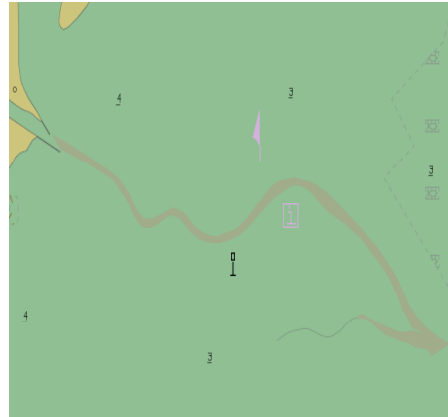
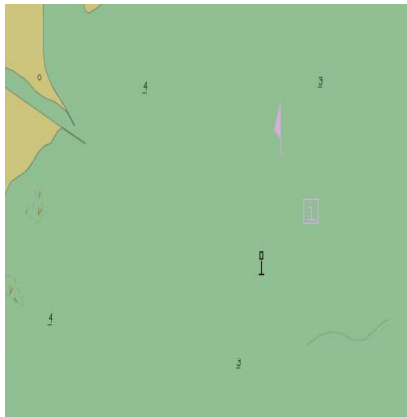
There is no instruction to symbolise an area « Tide Way » feature excepted the symbolisation of the object name (see instruction 1) .

Extract instructions from the current plain boundaries look up table (Presentation Library 3.3).

```
0001 500200
LUPT 40LU00200NILTIDEWYA00007SPLAIN_BOUNDARIES
ATTC 1
INST 38TX (OBJNAM, 1, 2, 3, '15110', 0, 0, CHBLK, 25)
DISC 6OTHER
LUCM 632070
**** 0
```

1

No way to guess the presence of a « tide way feature » on this picture excepted after select it.



The proposal:

The proposal follows the symbolisation proposed in INT 1 for this kind of tide way (dash grey lines)

New plain boundaries look up table instructions (and symbolised boundaries as well)

```
0001 500200
LUPT 40LU00200NILTIDEWYA00007SPLAIN_BOUNDARIES
ATTC 1
INST 54LS (DASH, 1, CHGRF) ;TX (OBJNAM, 1, 2, 3, '15110', 0, 0, CHBLK, 25)
DISC 6OTHER
LUCM 632070
**** 0
```

The symbolization proposed

