

**PLOT 6**

Standard & All text (no Nature of seabed) & Soundings & Seabed and Obstructions & Services and Small craft facilities

Safety contour labels

1:20 000

Shallow 2m, Safety contour 5 m, Deep contour 10 m, Safety depth 4 m

Symbolized boundaries, Simplified symbols, Multicolour

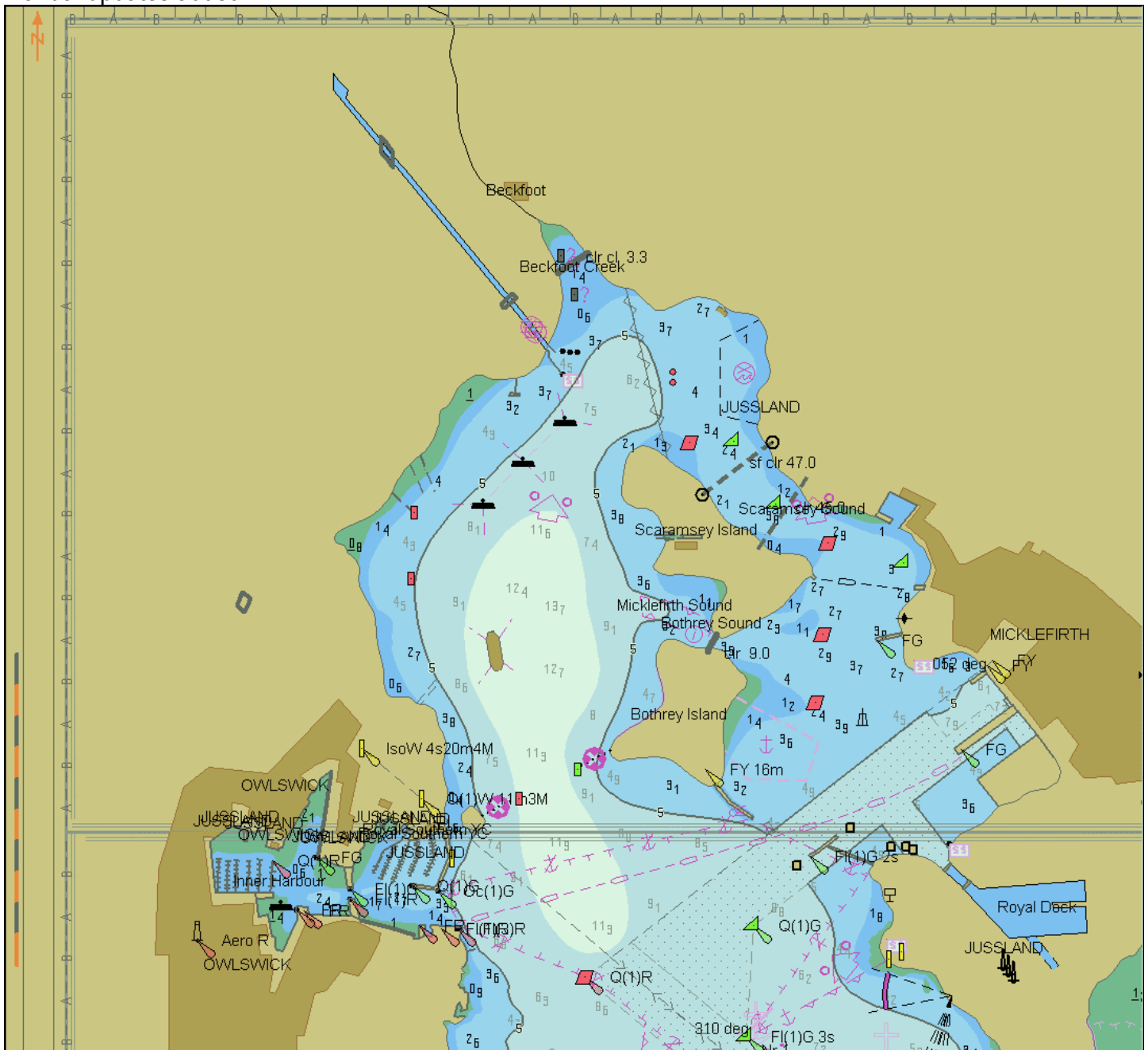
ENC from "S57Edition 3.1\goodb1": GB4X0000, GB5X01NW, GB5X01SE, GB5X02SE

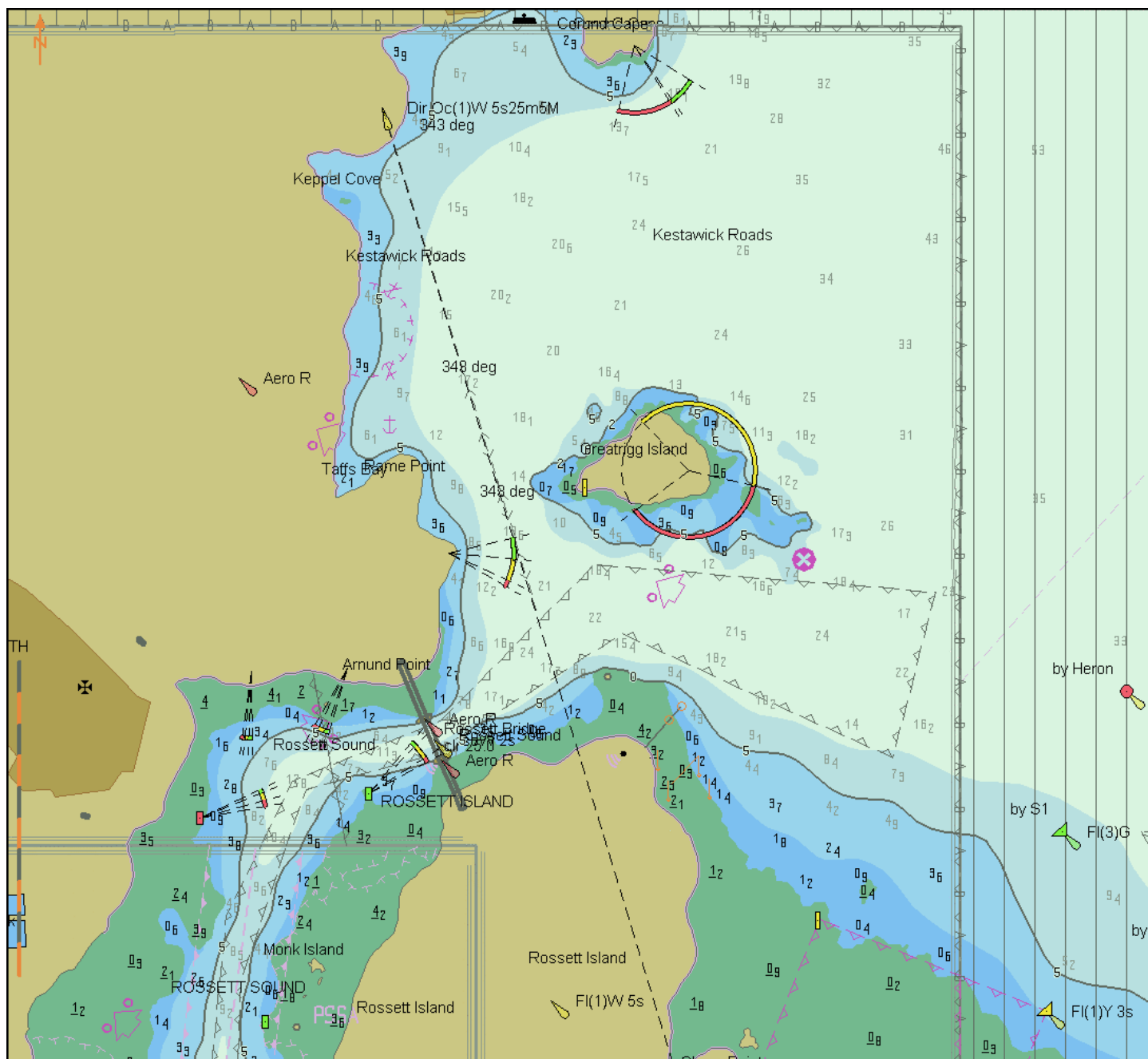
ENC from "S57Edition 3.1\invbase": GB5X01NE

ENC from "S57Edition 3.1.1": GB5X01SW

ENC updates from "S57Edition 3.1.1": GB5X01SW.001, .002

Manual updates added





# MANUAL UPDATES (Text quotation from IEC TEST DATA set instructions)

Add the following soundings:

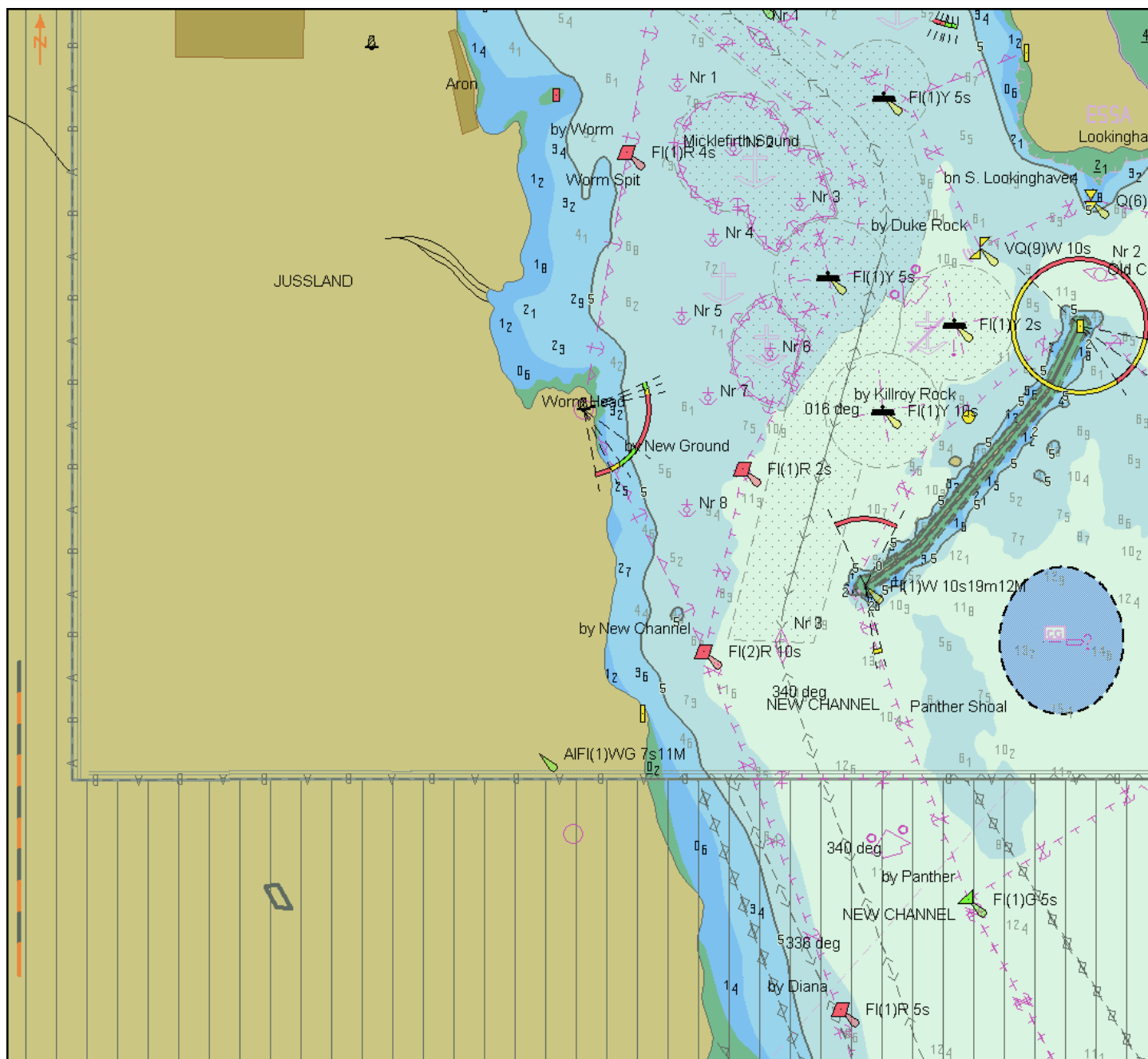
Drying 3.2 at 32 29.696S, 60 58.689E  
Drying 2.3 at 32 29.792S, 60 58.727E  
1.2 at 32 29.715S, 60 58.843E  
1.4 at 32 29.787S, 60 58.881E.

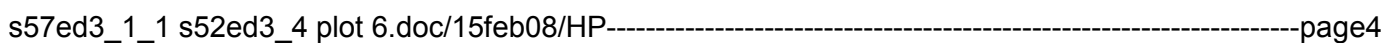
Delete the following sounding:

Drying 0.3 at 32 29.759S, 60 58.794E

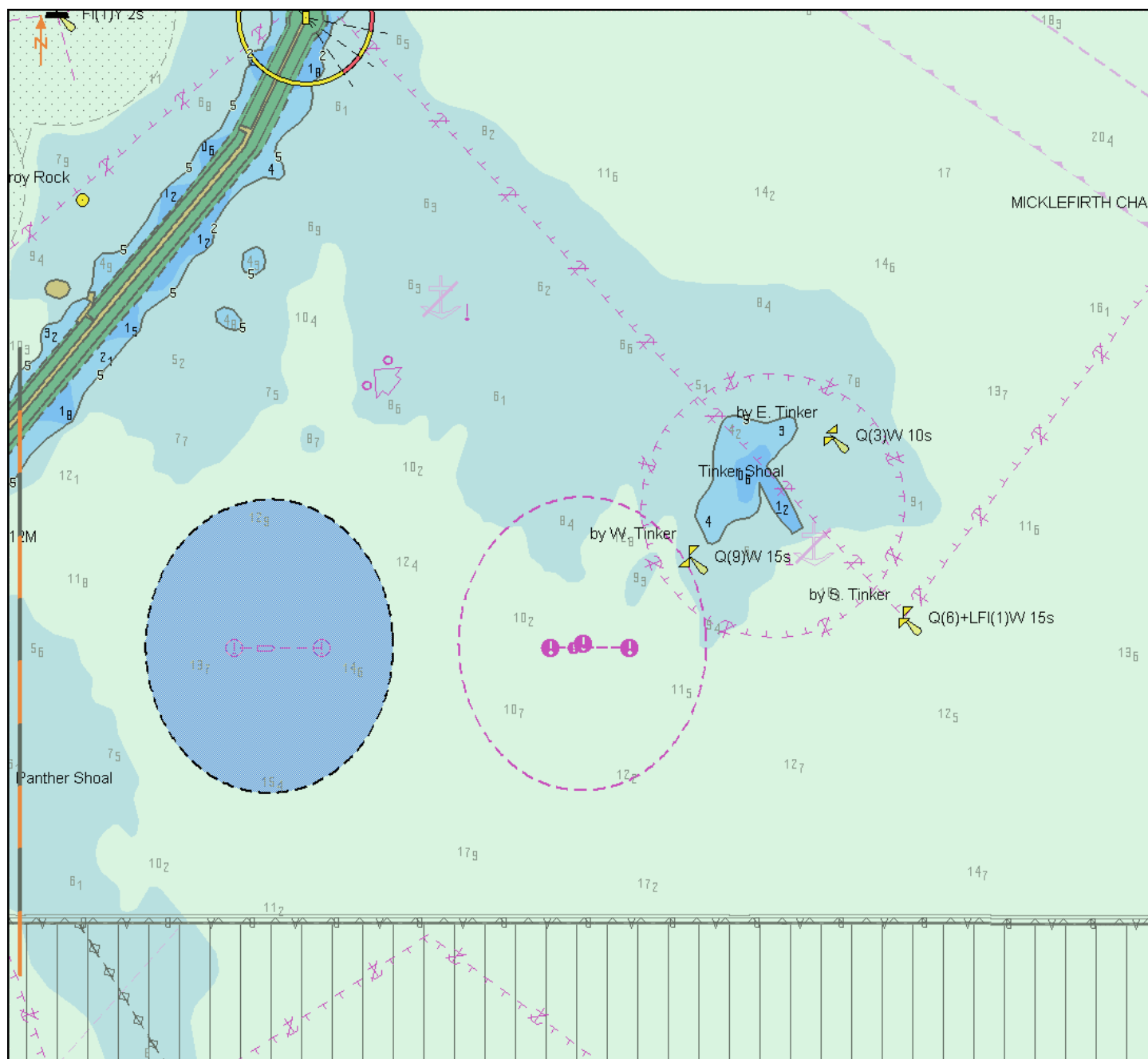
Add a Jetty:

Start 32 29.687S, 60 58.645E  
End 32 29.553S, 60 58.778E

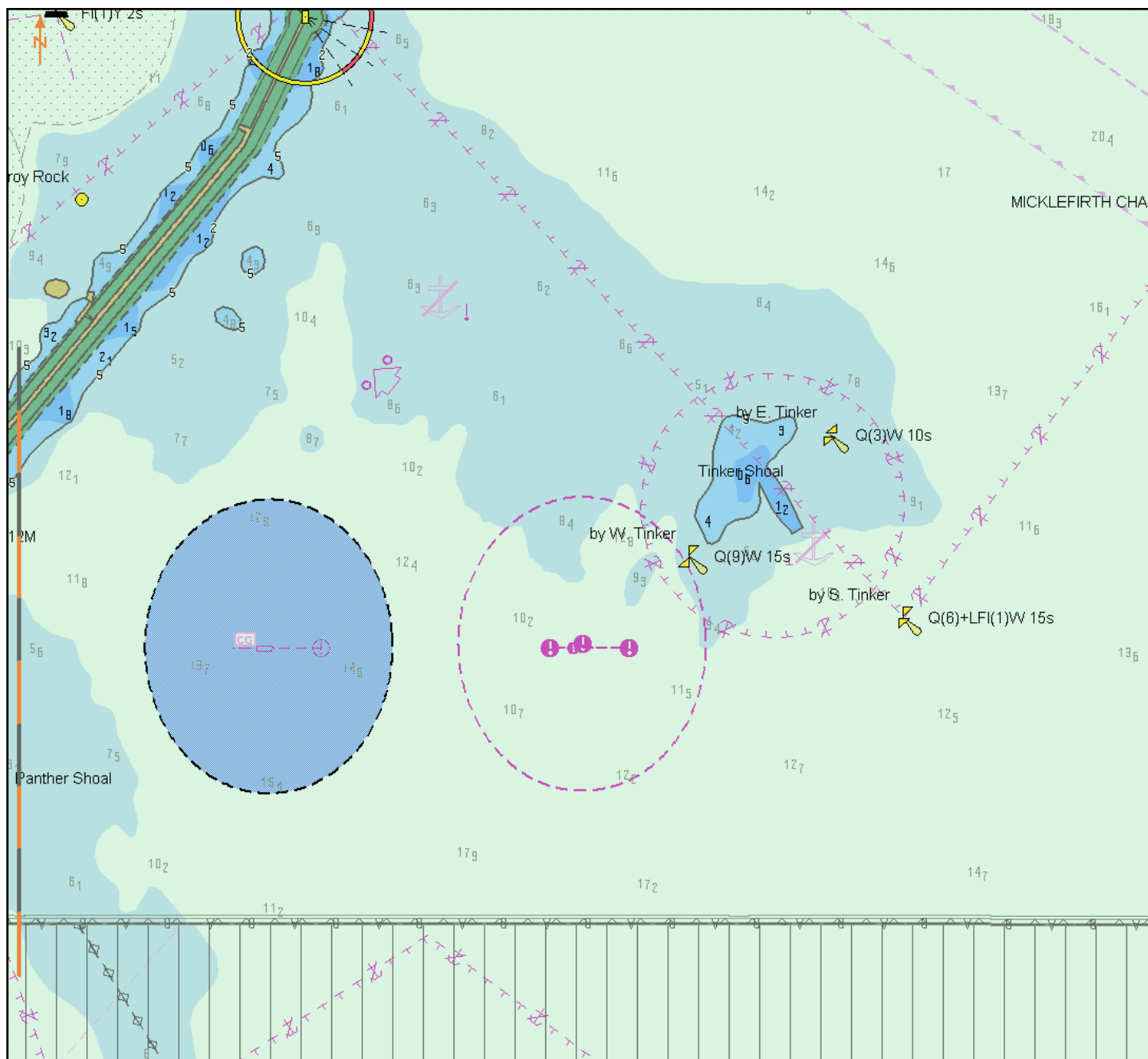




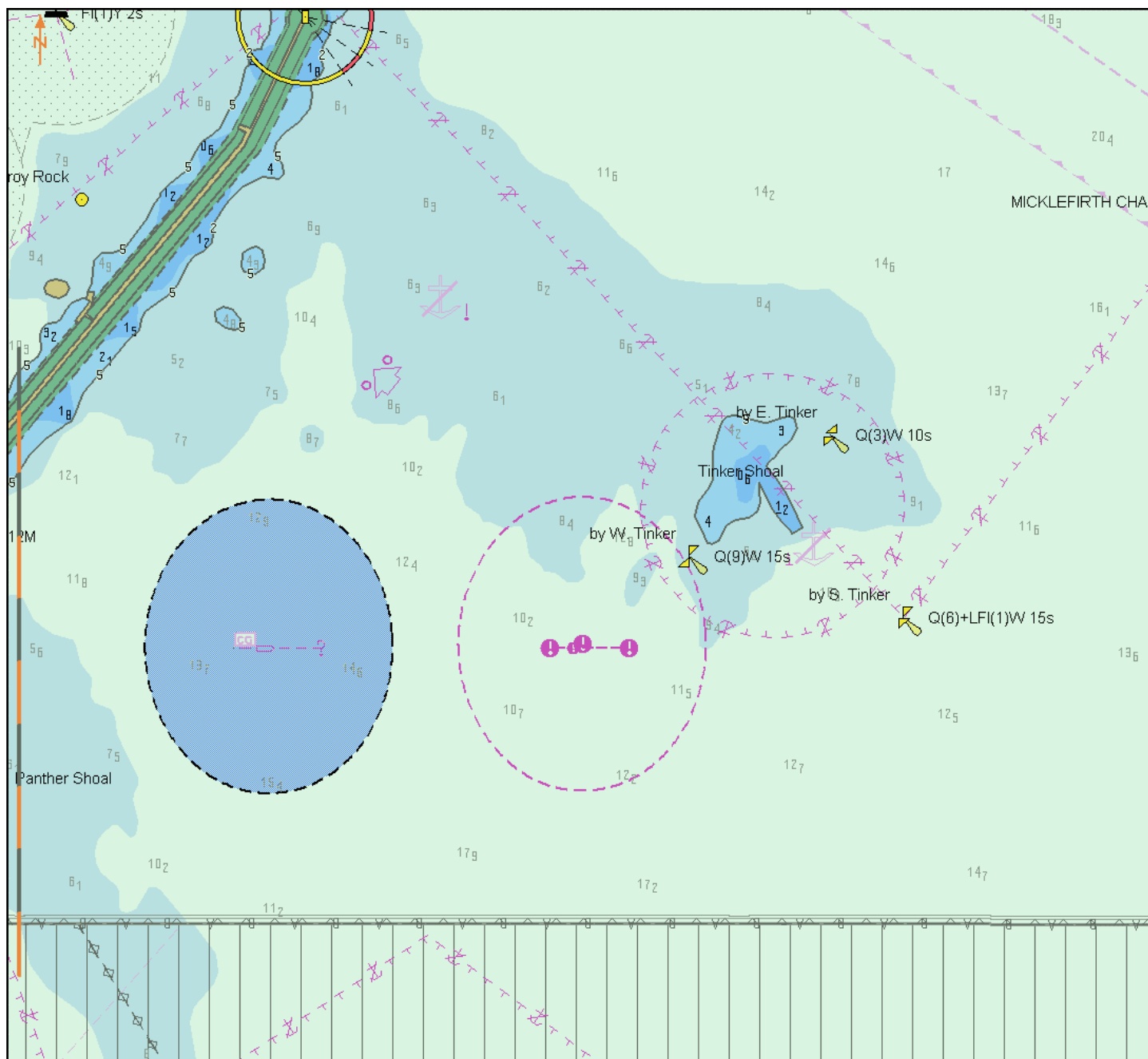
## Details of update sequence for GB5X01SW



Picture 1: Scale 1:10 000, GB5X01SW.000 from "S57 Edition 3.1.1" without updates



Picture 2: Scale 1:10 000, GB5X01SW.000 from "S57 Edition 3.1.1" with update 001



Picture 3: Scale 1:10 000, GB5X01SW.000 from "S57 Edition 3.1.1" with updates 001 and 002