















**Joint 18<sup>th</sup> TSMAD & 1<sup>st</sup> DIPWG Meeting  
Ottawa, Canada, 4-8 May 2009**

Inconsistencies with isolated danger symbol in plots

Starting conditions

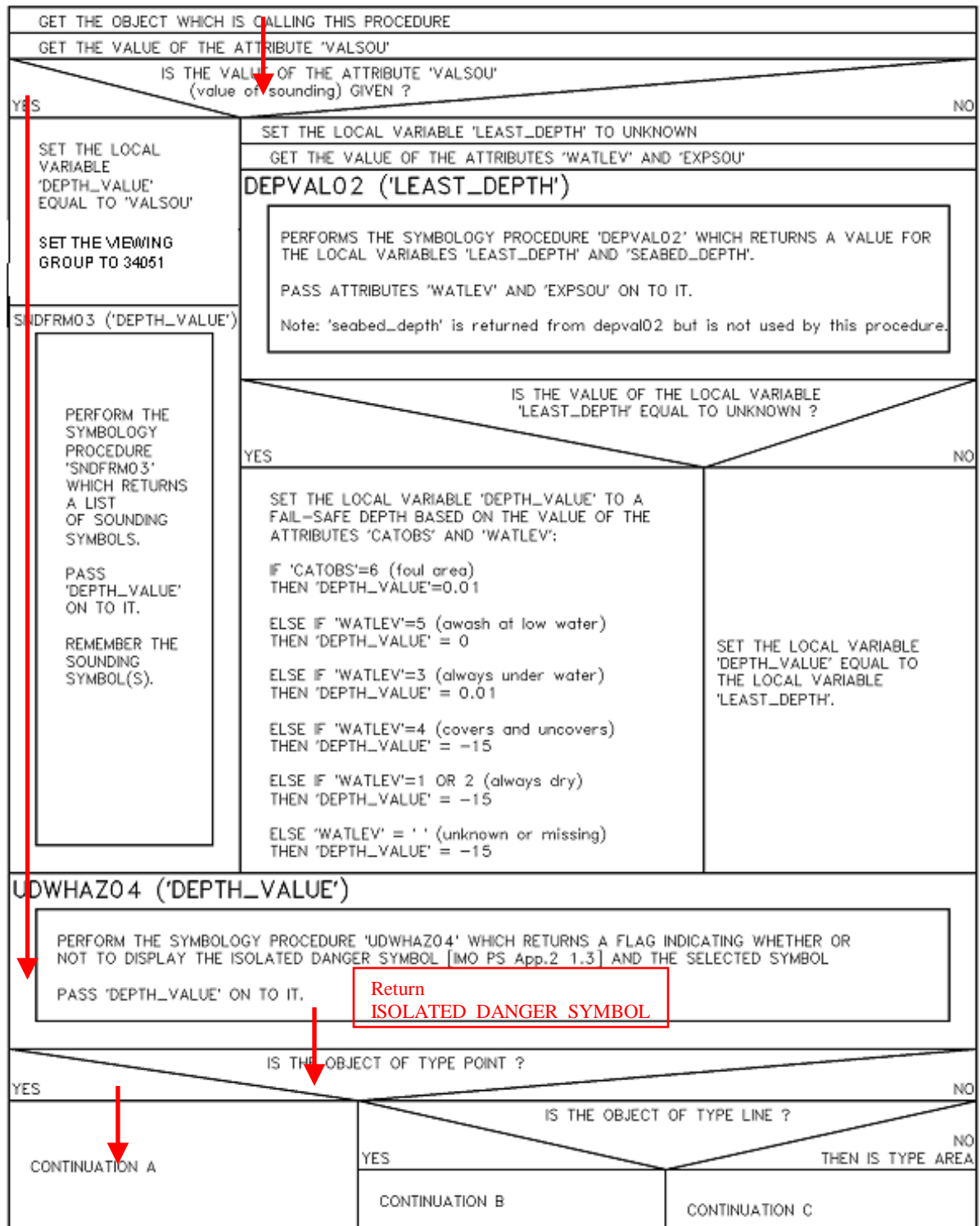
AA5C1JKL.000, safety contour set to 5m			
A:DEPARE, DRVAL1=50, DRVAL2=100			
Object #	Encoding	PNG	Result from Jeppesen
1	P:UWTROC, WATLEV=3, VALSOU=0.1, SCAMIN=45000		
2	P:OBSTRN, WATLEV=3, VALSOU=empty, SCAMIN=45000		
3	P:UWTROC, WATLEV= empty, VALSOU= empty, SCAMIN=45000		
3a	P:OBSTRN, WATLEV= empty, VALSOU= empty, SCAMIN=45000		
4	P: UWTROC, WATLEV=3, VALSOU=empty, SCAMIN=45000		
5	P:WRECKS, CATWRK=4, WATLEV=4, VALSOU=empty, SCAMIN=45000		
6	P:WRECKS, CATWRK=2, WATLEV=3, VALSOU=empty, QUASOU=2, SCAMIN=45000		

The method of how Object 1 and Object 2 were derived has been described in the sections below. It was found unnecessary to describe all 7 objects, since they are more or less variants and all end up with the same result.

Object 1

# OBSTRN06

Conditional symbology procedure for symbolizing objects of the class obstruction (OBSTRN) and underwater rock (UWTROC).

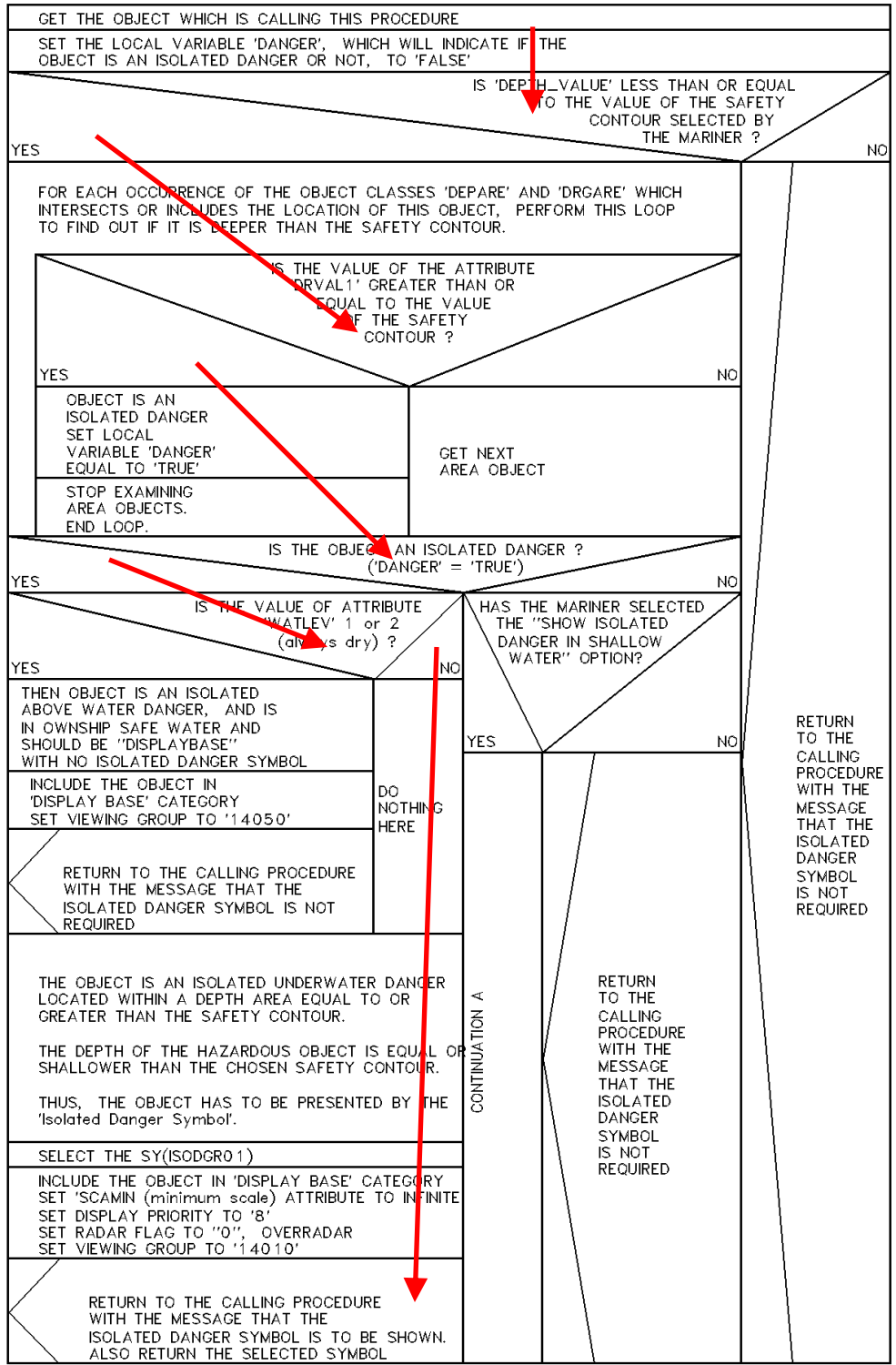


Return ISOLATED DANGER SYMBOL

# UDWHAZO 4

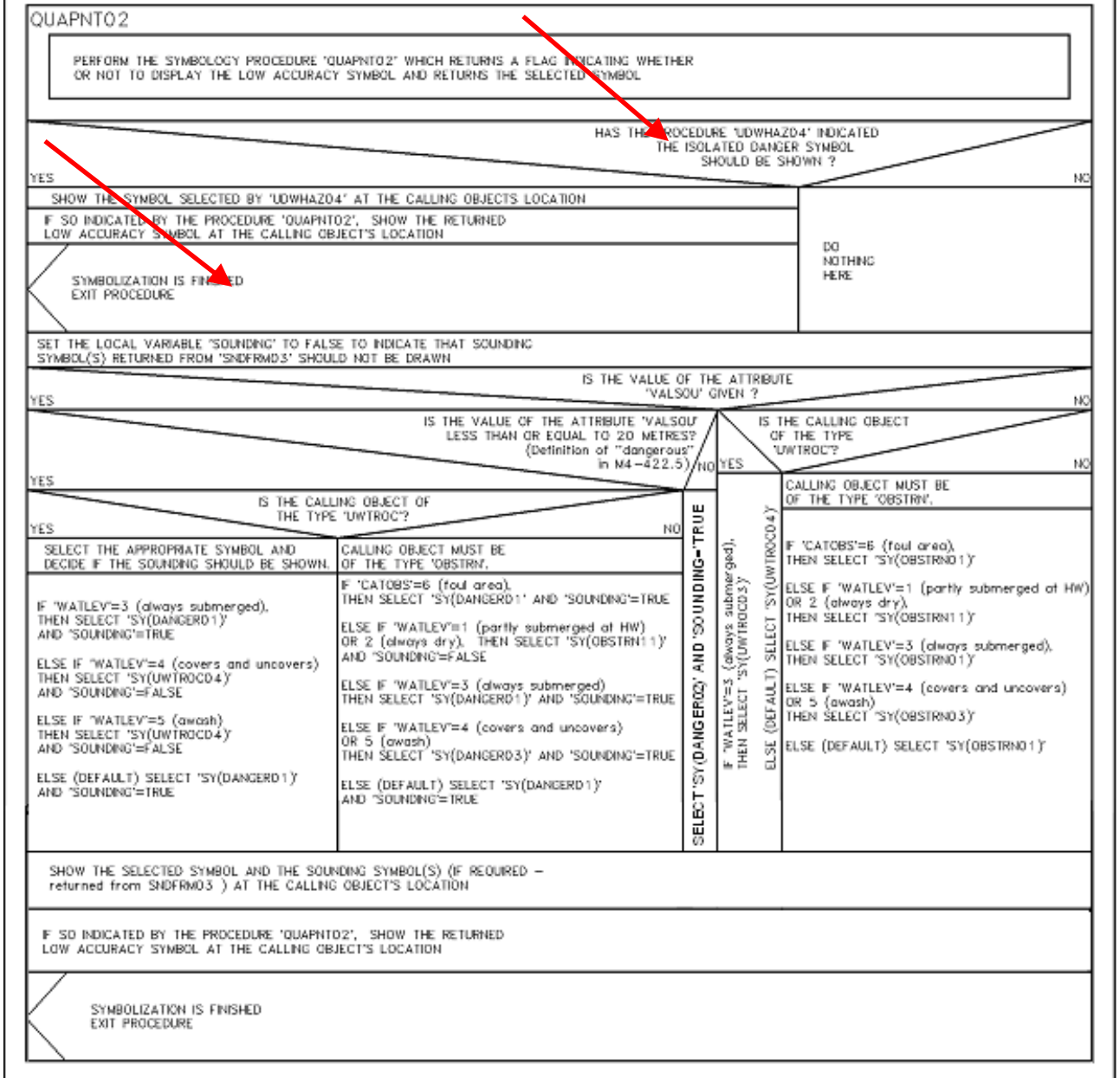
Conditional symbology procedure for symbolization of 'isolated dangers'. Please note, that this symbology procedure is called by other procedures (obstruction and wrecks) which handle the symbolization of obstructions located on the seabed.

This procedure is expecting the calling procedure to pass the local variable 'DEPTH\_VALUE'.



# OBSTRN06 Continuation A

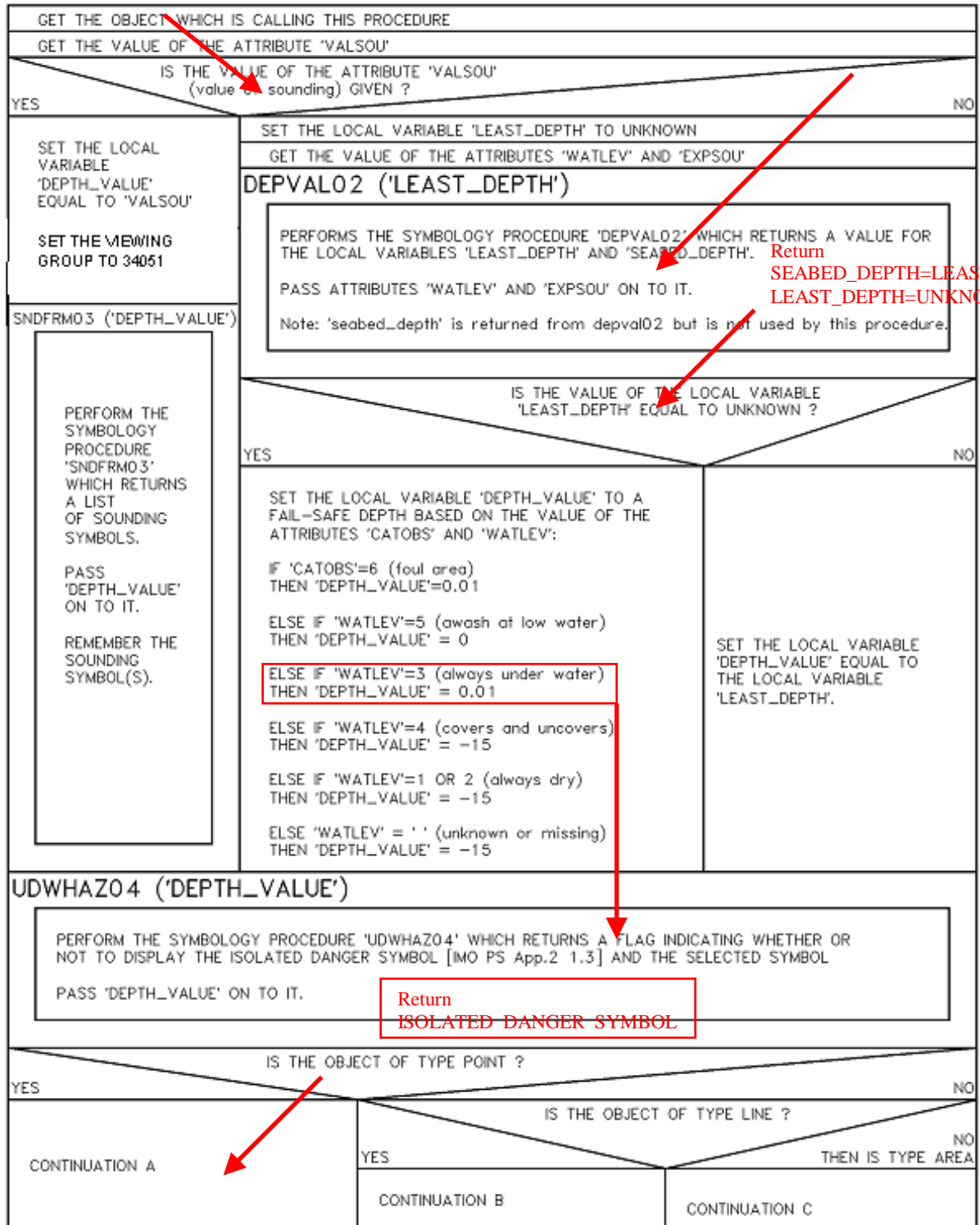
Point objects, underwater rocks (UWTROC) and obstructions (OBSTRN)



Object 2

# OBSTRN06

Conditional symbology procedure for symbolizing objects of the class obstruction (OBSTRN) and underwater rock (UWTROC).



Return  
SEABED\_DEPTH=LEAST\_DEPTH,  
LEAST\_DEPTH=UNKNOWN

Return  
ISOLATED DANGER SYMBOL

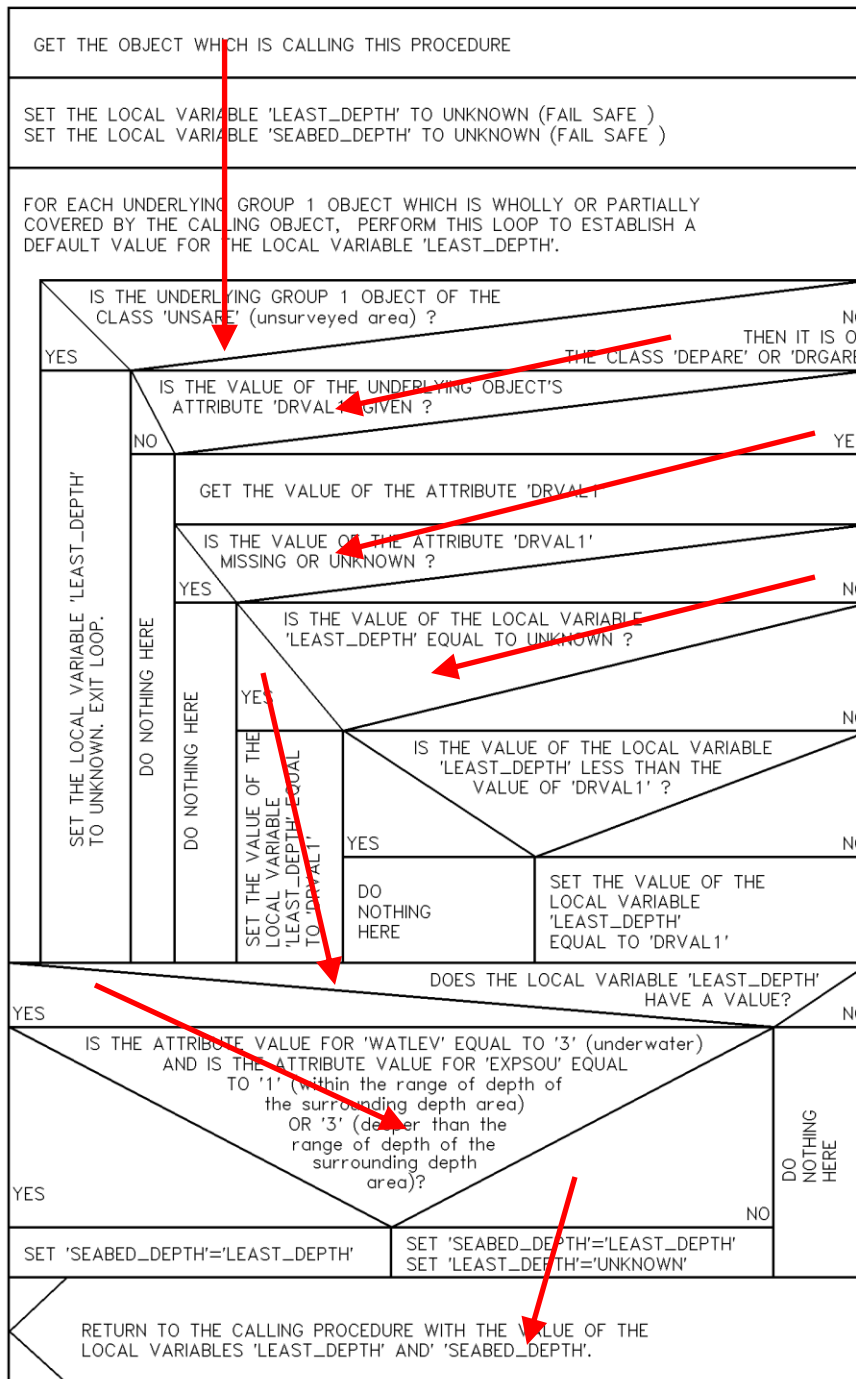
# DEPVAL02

Conditional symbology procedure to establish a more precise value for the depth value of OBSTRN or WRECKS or UWTRC from the underlying group 1 area.

Please note that this procedure is called by other procedures (obstructions and wrecks) which handle the symbolization of obstructions on the seabed.

The procedure is expecting the calling procedure to pass the attributes WATLEV and EXPSOU.

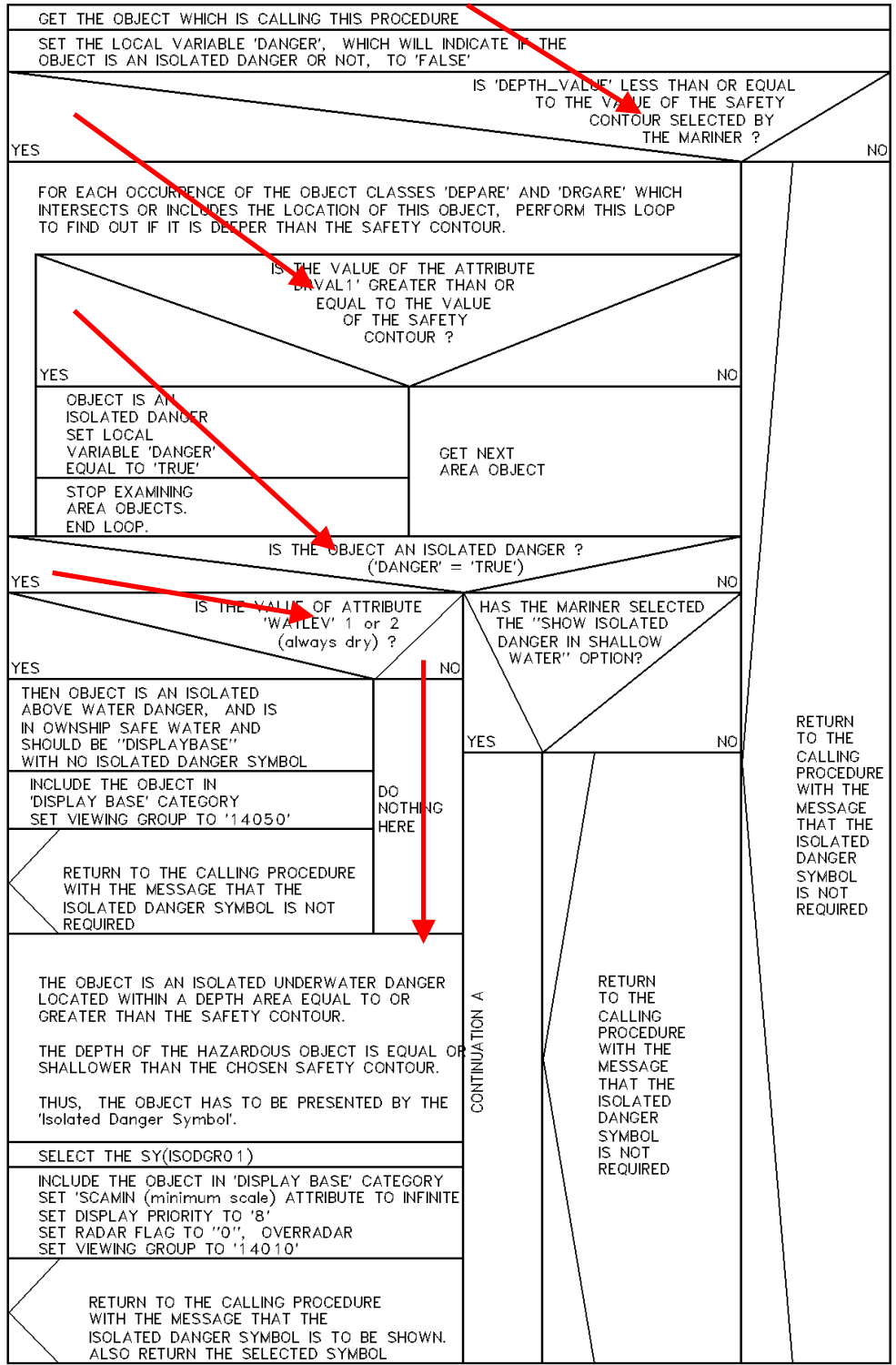
The procedure returns local variables 'LEAST\_DEPTH' and 'SEABED\_DEPTH'.



# UDWHAZO 4

Conditional symbology procedure for symbolization of 'isolated dangers'. Please note, that this symbology procedure is called by other procedures (obstruction and wrecks) which handle the symbolization of obstructions located on the seabed.

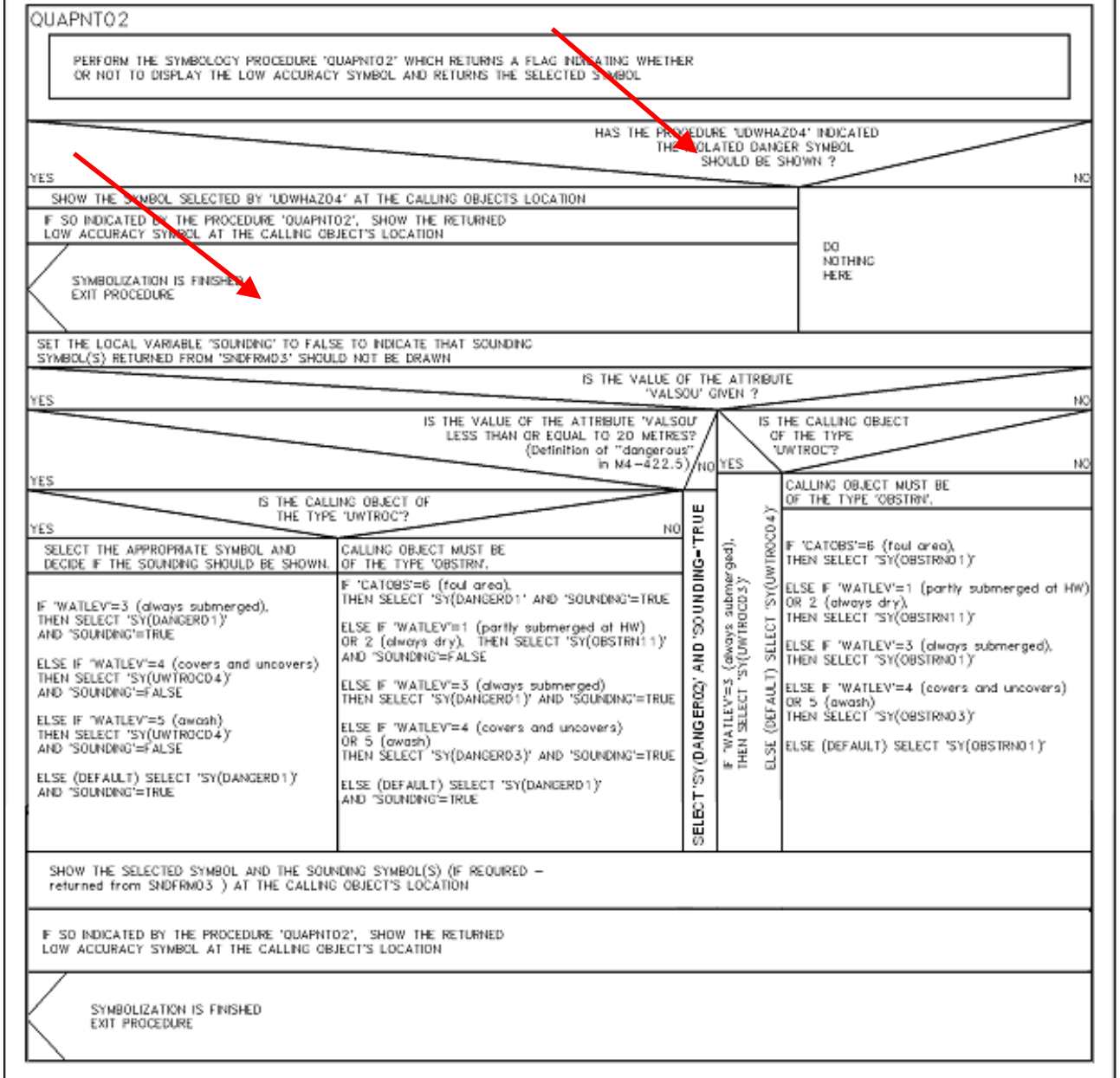
This procedure is expecting the calling procedure to pass the local variable 'DEPTH\_VALUE'.





# OBSTRN06 Continuation A

Point objects, underwater rocks (UWTROC) and obstructions (OBSTRN)



Attach query result from Alexander regarding real world situations