

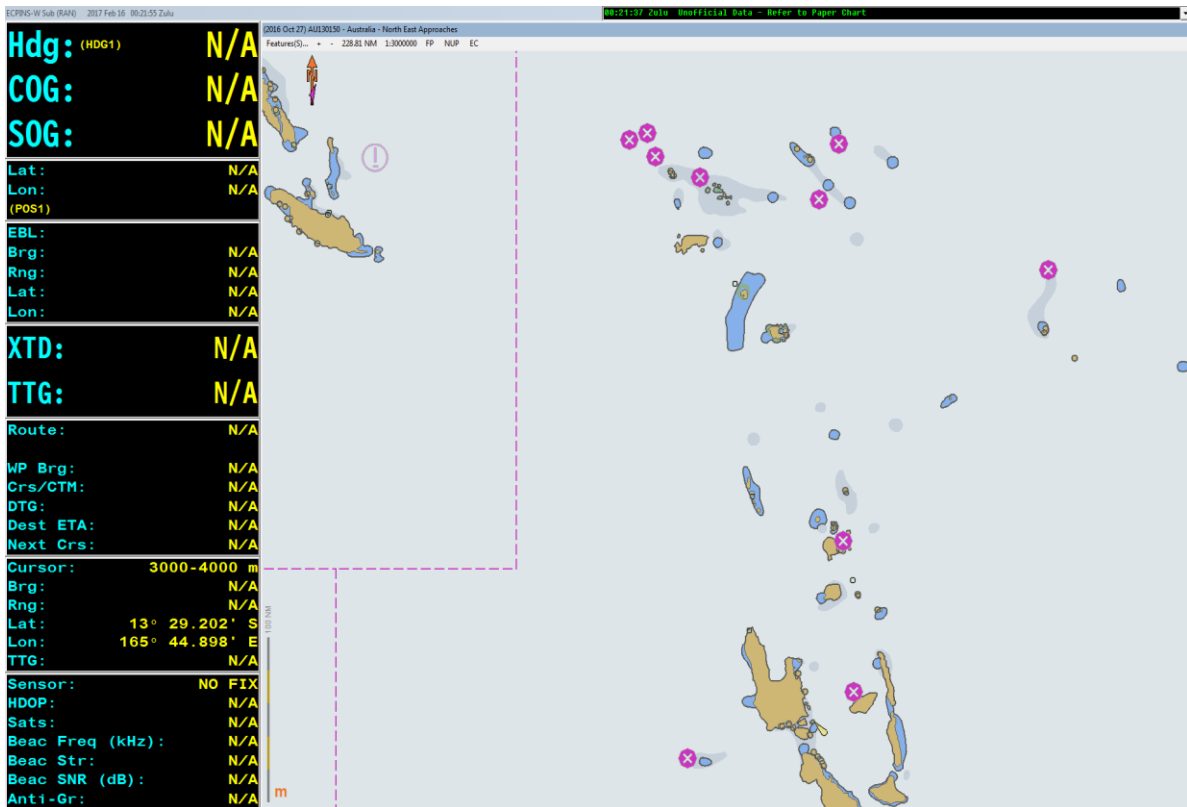
Examples of “Unofficial Data” warnings

The examples below (from Navy’s ECDIS v6) demonstrate the different circumstances under which an “Unofficial Data” warning will be triggered.

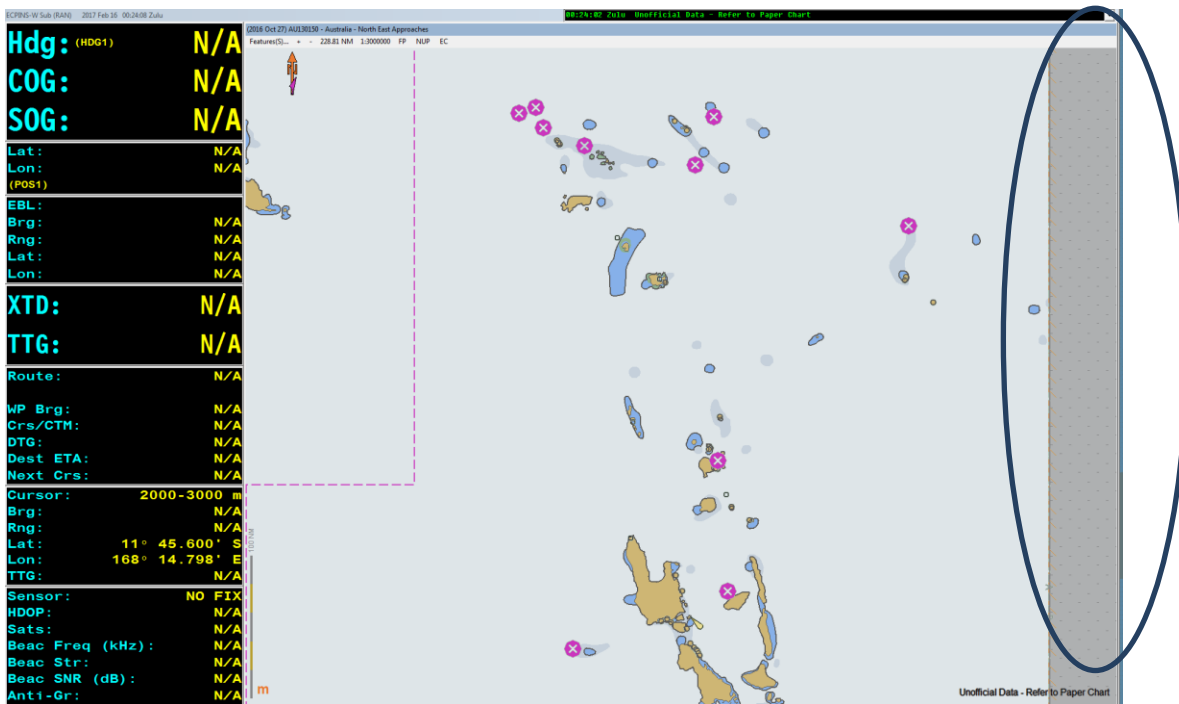
This could occur where a user has not subscribed to a full range of cells and therefore at certain zoom levels or when viewing certain areas the ECDIS will have no data, or relies on the ECDIS OEM default world background.

This can also occur when unofficial data has been loaded by the ECDIS user, and may be further influenced by zooming or panning the viewable area.

EXAMPLE 1 on ENC AU130150

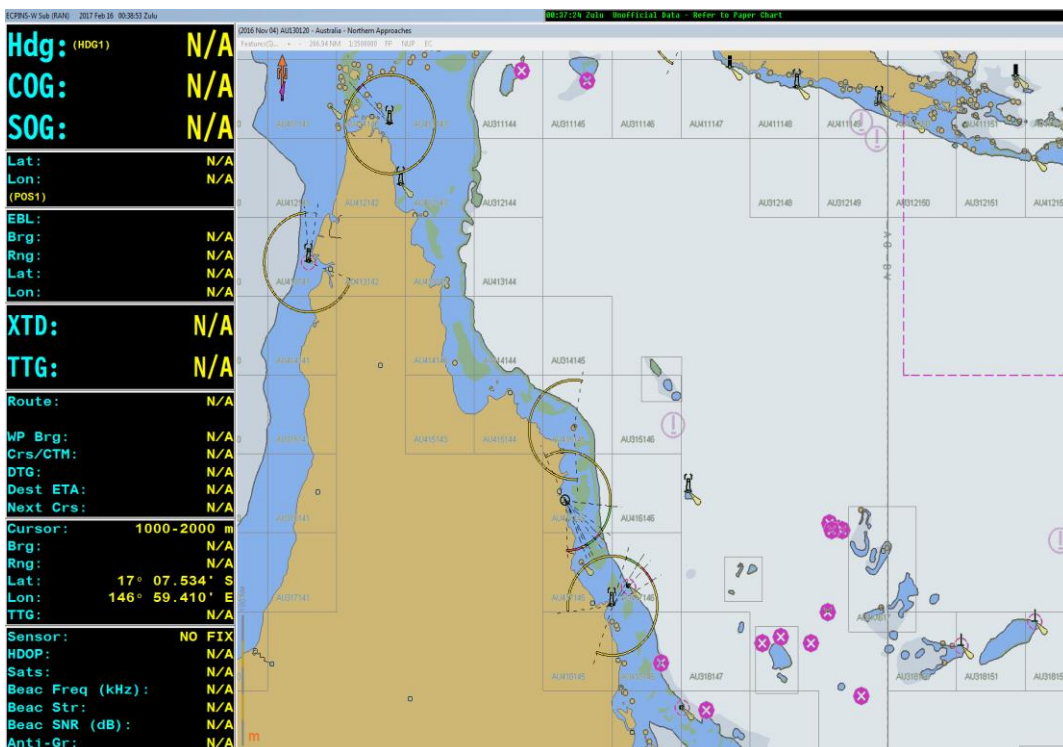


AU130150, with the entire screen covered by the official ENC. No “Unofficial Data –Refer to Paper Chart” warning is displayed.

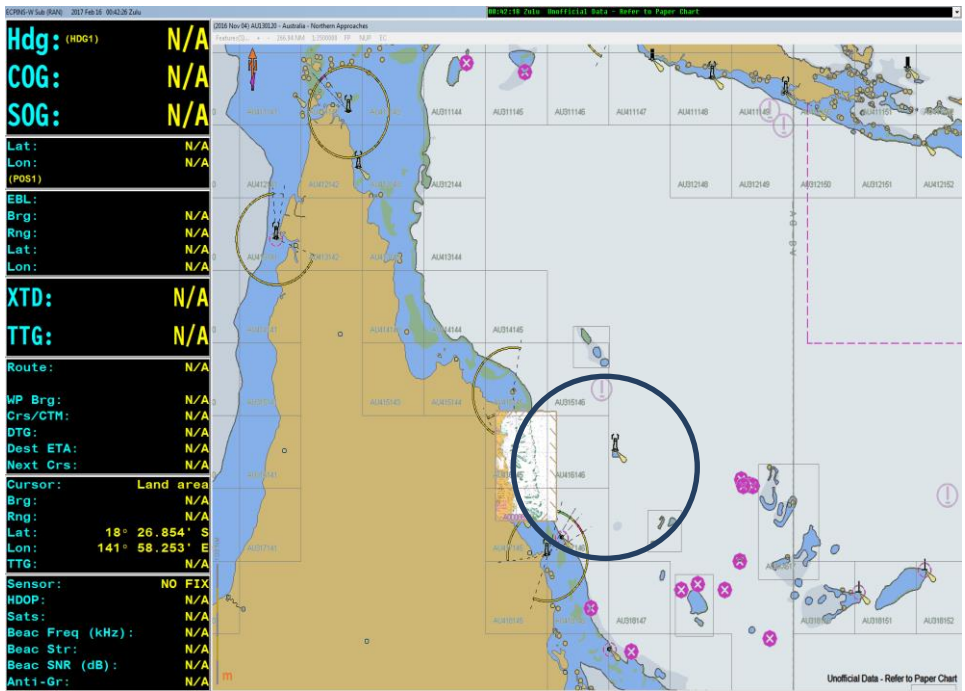


AU130150, panned Eastward, with a section of the ECDIS manufacturer's unofficial background world map visible (highlighted). This unofficial data invokes the “Unofficial Data –Refer to Paper Chart” message in the lower right corner of the screen.

EXAMPLE 2 on ENC AU130120

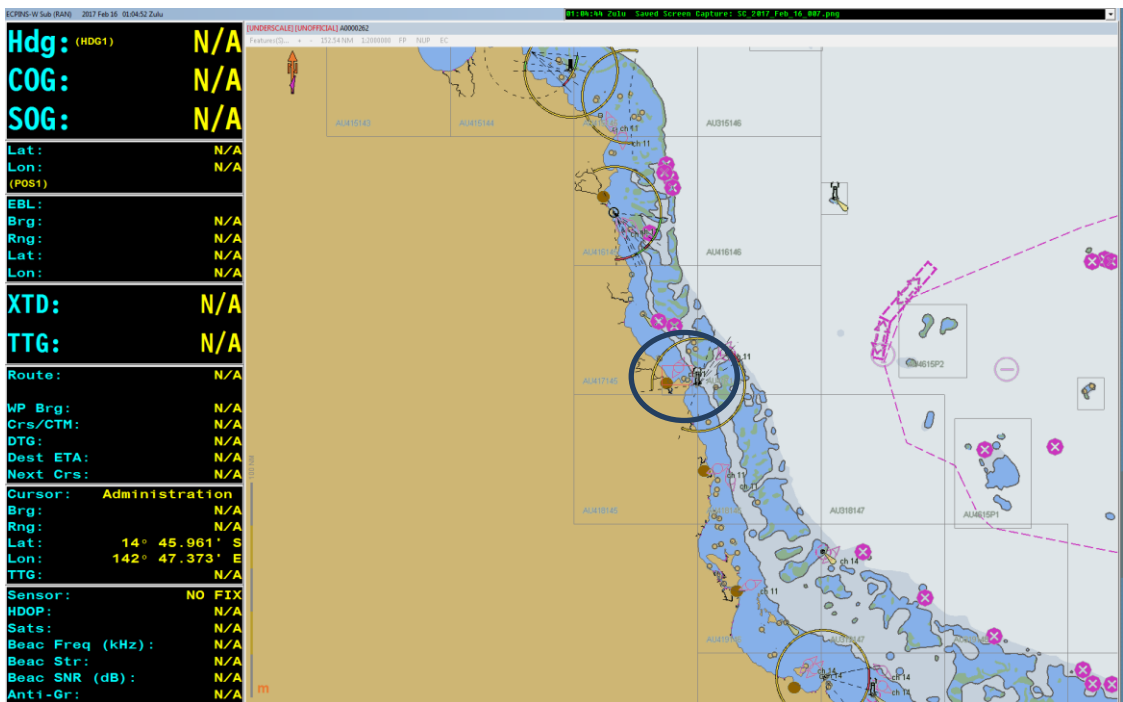


AU130120, with the entire screen covered by the official ENC. No “Unofficial Data –Refer to Paper Chart” message is displayed.

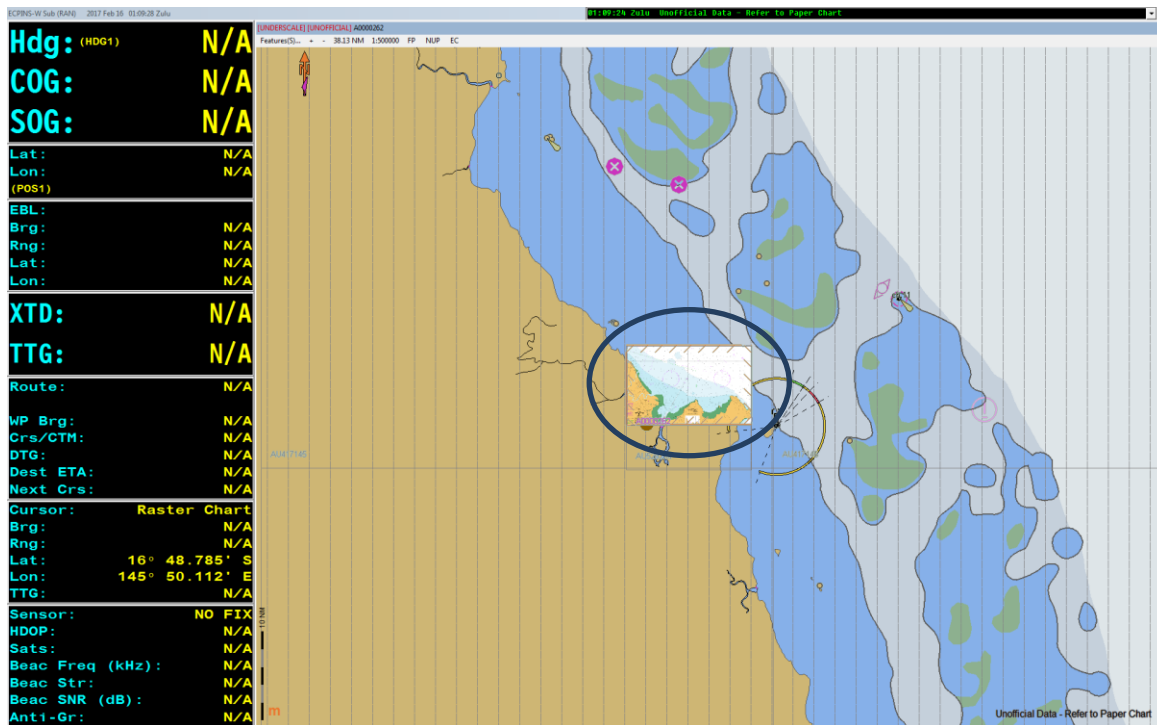


AU130120 with an overlay of Geotiff* of Aus831 (highlighted). The Geotiff overlay invokes the “Unofficial Data –Refer to Paper Chart” message in the lower right corner of the screen. (* Geotiff are scanned images of paper charts that are not suitable for navigation.)

EXAMPLE 3 AU220140



AU220140 with a Geotiff of Aus262 loaded however, due to the current zoom level the geotiff is only being shown as a chart outline (highlighted). This chart outline still invokes the smaller “Unofficial” warning upper left corner of the screen only.



AU220140 with a Geotiff of Aus262 loaded and due to the increased zoom level the geotiff is now visible overlaid on the ENC. This invokes unofficial data warnings at **both** upper left and lower right of the screen.

Summary

Within ECPINS (the RAN's ECDIS); whenever unofficial data is displayed as either a chart outline, or actually being displayed within any part of the current display window, the ECDIS will display a full "Unofficial Data" warning. If unofficial data is available within the ECDIS, but is not yet open on the navigation screen, only an abbreviated "Unofficial" is displayed.

As a minimum, all ECDIS software should display an "Unofficial Data" warning when non-official data is being shown within the current display window. Exact behaviour may vary depending upon OEM implementation. Display of the ECDIS manufacturer's world background should trigger the same warnings.