



PRIMAR[®]
STAVANGER

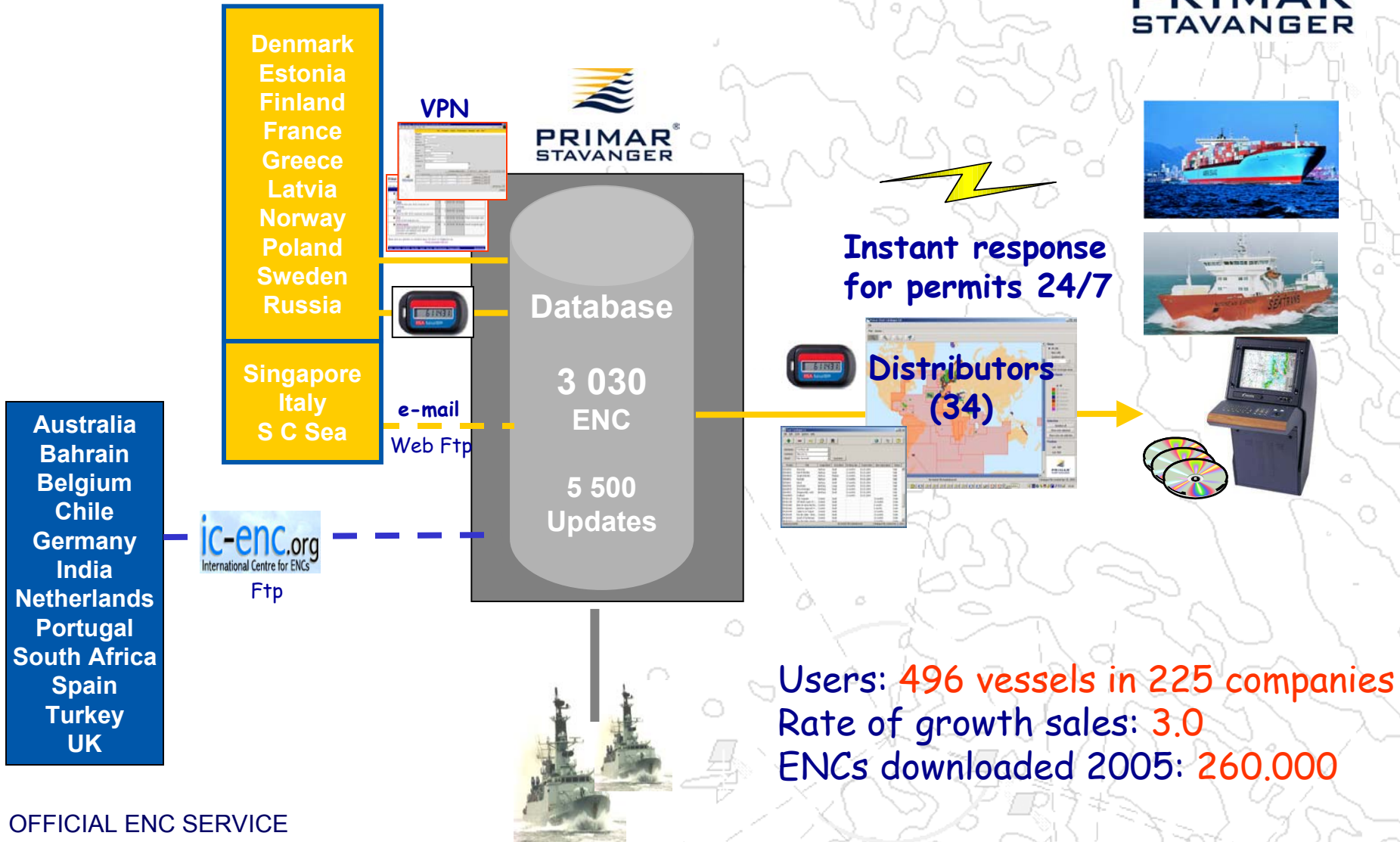
CHRIS17-10.1A

Primar Stavanger Status Report

Operation of the ENC service



**PRIMAR[®]
STAVANGER**



Users: 496 vessels in 225 companies
Rate of growth sales: 3.0
ENCs downloaded 2005: 260.000

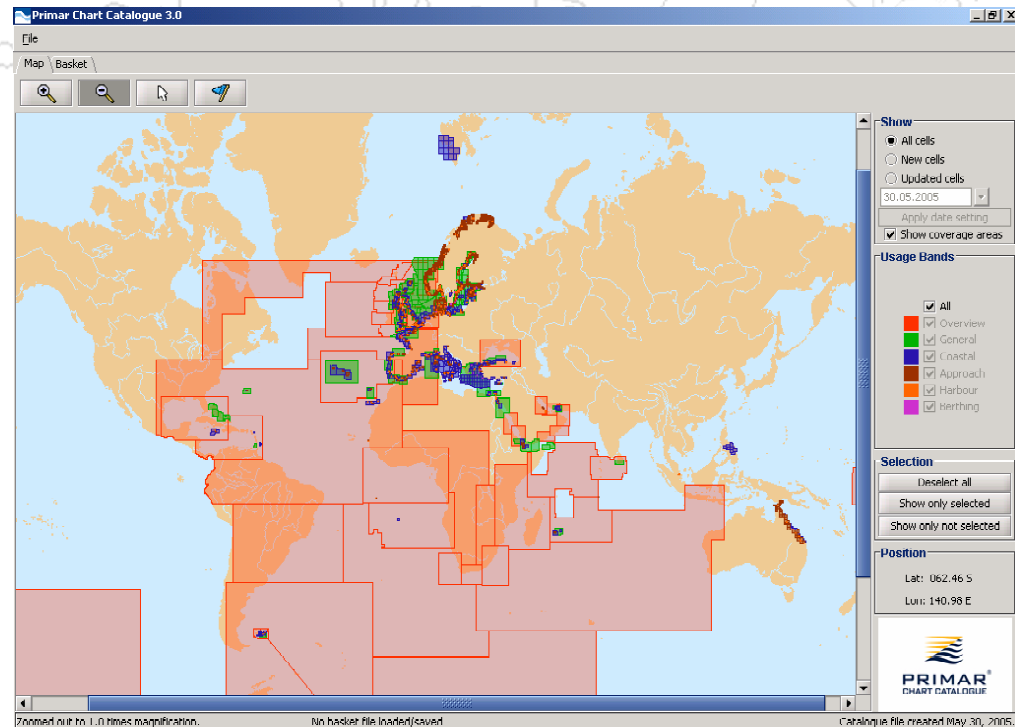
Coverage

Primar Stavanger Chart Catalogue



PRIMAR[®]
STAVANGER

- New ENC's every week
- Coverage increasing in Asia and North- and South-America
- Focus on developing coverage for most important international shipping routes.



Primar Chart Catalogue 3.0

- ENC folio planning, management, on-line ordering and delivery -



PRIMAR
STAVANGER

The screenshot displays the Primar Chart Catalogue 3.0 software interface. The main window shows a map of Europe with various colored regions and a grid overlay. A sidebar on the right lists products and their details. A 'Quotation' window is open in the foreground, displaying a table of products and their prices.

Product	Subscription type	Price band	Permit end date	Amount	Price	Discount	Total
ENC 12 months	Large	Mar 10, 2006	75	1530.00	1530.00	0.00	0.00
ENC 12 months	Medium	Mar 10, 2006	44	466.00	466.00	0.00	0.00
ENC 12 months	Small	Mar 10, 2006	390	1690.00	1690.00	0.00	0.00
ENC unit 12 months		Mar 10, 2006	37	585.00	585.00	0.00	0.00
Sum:					4271.00		4271.00

OFFICIAL ENC SERVICE

www.primar.org

Developments



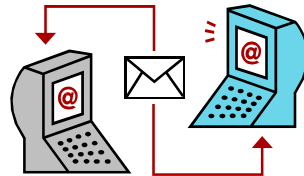
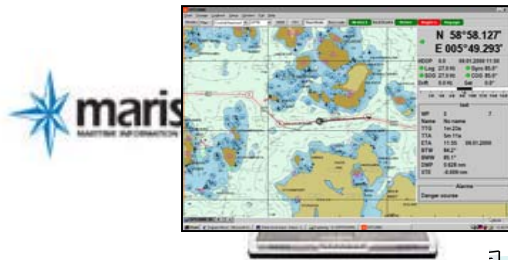
- ❑ **Developed support for cell key exchanges to support cell key unicity between IHO S-63 qualified Data Servers. Includes XML sales reporting between Primar and its Qualified Distributors.**
- ❑ **Developed and set in operation an ENC signature service. Managed by ECC AS under an agreement with Norwegian Hydrographic Service and UKHO. Primary server in Monaco with backup in Stavanger. Require and delivered 100% availability and performance.**
- ❑ **Real-time ENC sales reports available to cooperating Hydrographic Offices**
- ❑ **Remote ENC updating. Service established to support remote ENC updating for the Norwegian State Pilots. Using a portable ECDIS as client and e-mail for data transfer.**
- ❑ **Prototype Primar remote updating service developed and in prototype testing. Service is using Chart Catalogue or ECDIS as client and enables easy management and instant transfer of ENC updates directly to users.**

Norwegian Pilots ENC updating

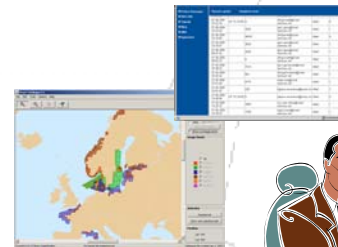
- in operation from 1 march 2005 -



PRIMAR
STAVANGER

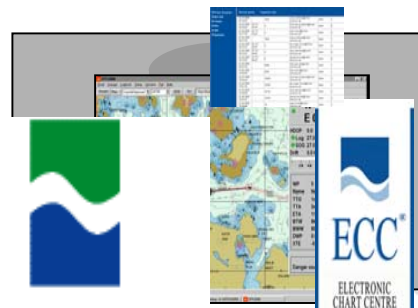


Pilot.name@chart-services.net



Norwegian Coastal Directorate

- reports and administration of users -



STATENS KARTVERK
Sjø

SMTP and FTP

OFFICIAL ENC SERVICE

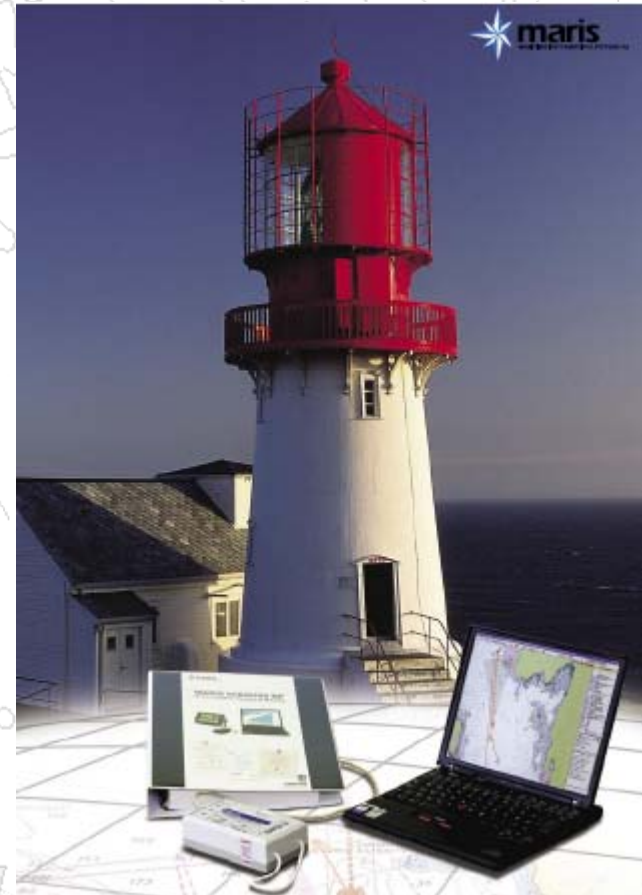
Remote updating direct from Primar Stavanger ENC Service

(estimated from 2006)



PRIMAR[®]
STAVANGER

- ENC updating via any ship shore communication
- Direct via web, e-mail or Primar Chart Catalogue
- Updated ENC is IMO Solas requirement for navigation on ECDIS



(Pilot PC + ECDIS SW System)



PRIMAR[®]
STAVANGER

Delays in updating of charts

