



*ENC – ECDIS seminar  
November 2008*

# **SHOM experience of ENC production**

**Jean-Luc Déniel, SHOM**





## Outline

1. **1998 - 2008 : ten years of ENC production**
2. **Production plan and principles**
3. **Team skills and evolutions**
4. **Issues**

# 1. 1998-2008

- 1998 : first ENC produced by SHOM
- 1995 – 1999 : GDS system
- 1999 : CARIS GIS (paper charts) – HOM (ENC)  
=> **continuous / common** production process between paper charts and ENC
  
- 2001 – 2008 :
  - + *CARIS HOM*
  - + *in-house control and post-processing tools*
  - + *in-house ER automatic production tool*
  - + *Dkart Inspector*
  - + *ENC Analyzer (including custom checks).*
  
- 2009 : CARIS HPD solution replacing our current database  
... paper chart and ENC production to be studied.

## Some figures

- **Original paper chart ~1200 hours**  
**(40 people)**
  - **ENC ~300 hours**  
**(13 people + outsourcing)**
- => About 50 publications and/or editions a year**  
**(50 paper charts and 50 ENCs)**
- **About 1200 Ntm a year**  
**(6 people)**

## 2. ENC production plan / areas

- metropolitan area : 250 ENC
- oversea french territories : 250 ENC
- foreign zones under French cartographic responsibility : 200 ENC

⇒ Status in October 2008 : 260 ENC (170 in metropolitan area)

Full portfolio : 700 ENC (done in 2017 at the current rhythm)

⇒ Temporary outsourcing of the encoding in order to speed up the creation of the initial ENC portfolio (~4 ENC/month = 80% of production is outsourced).

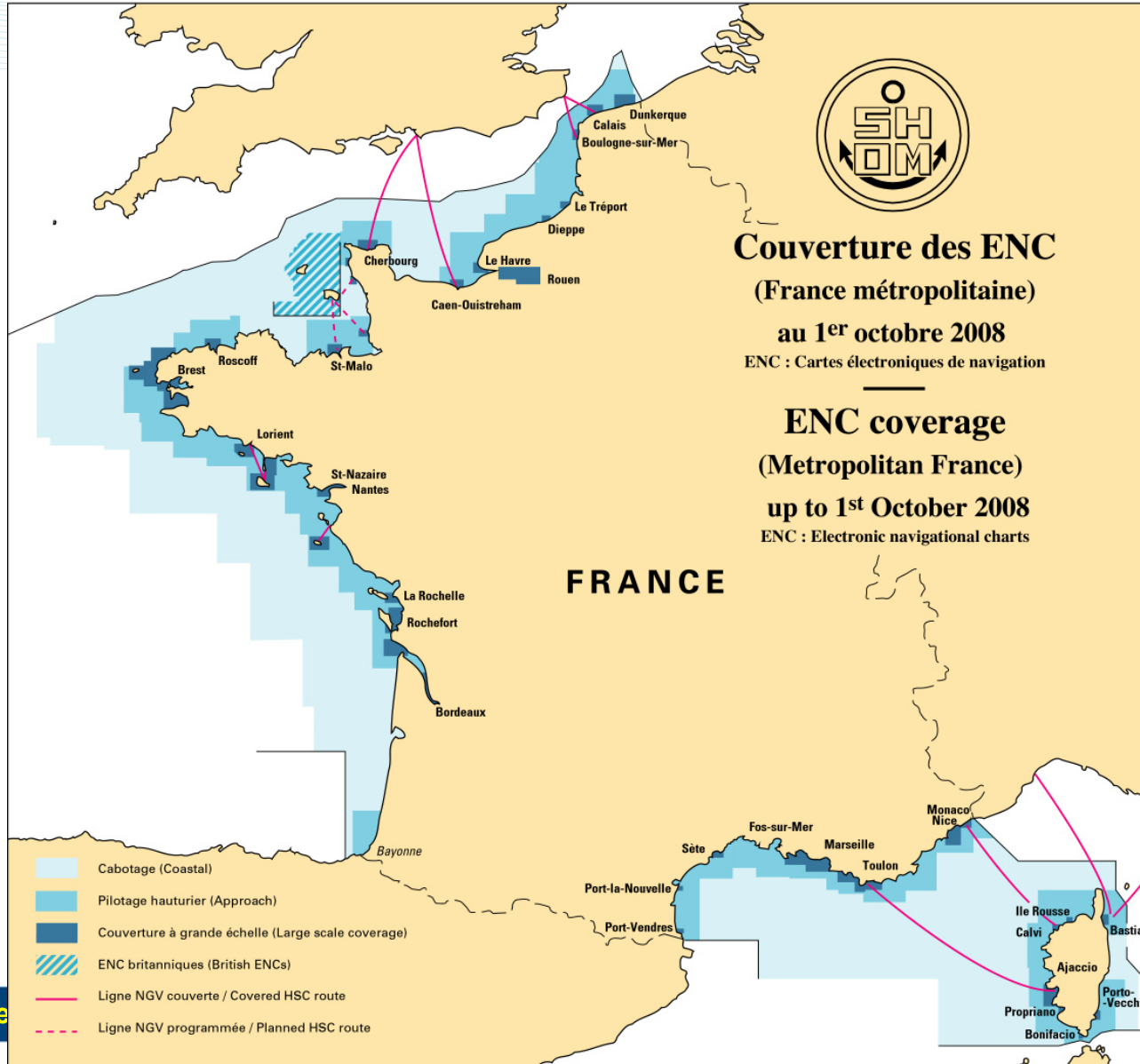
⇒ the more new ENC we have produced, the more updating (edition / ER) we have to do, (the less new ENC we can produce...)

## 2. ENC production plan / priorities

1. **Safety of Life at Sea (SOLAS - High Speed Crafts)**
  2. **Environmental sensitive areas (commercial vessels)**
  3. **Economy (fishing vessels)**
  4. **Leisure**
- + navy needs (military harbours, classified data)

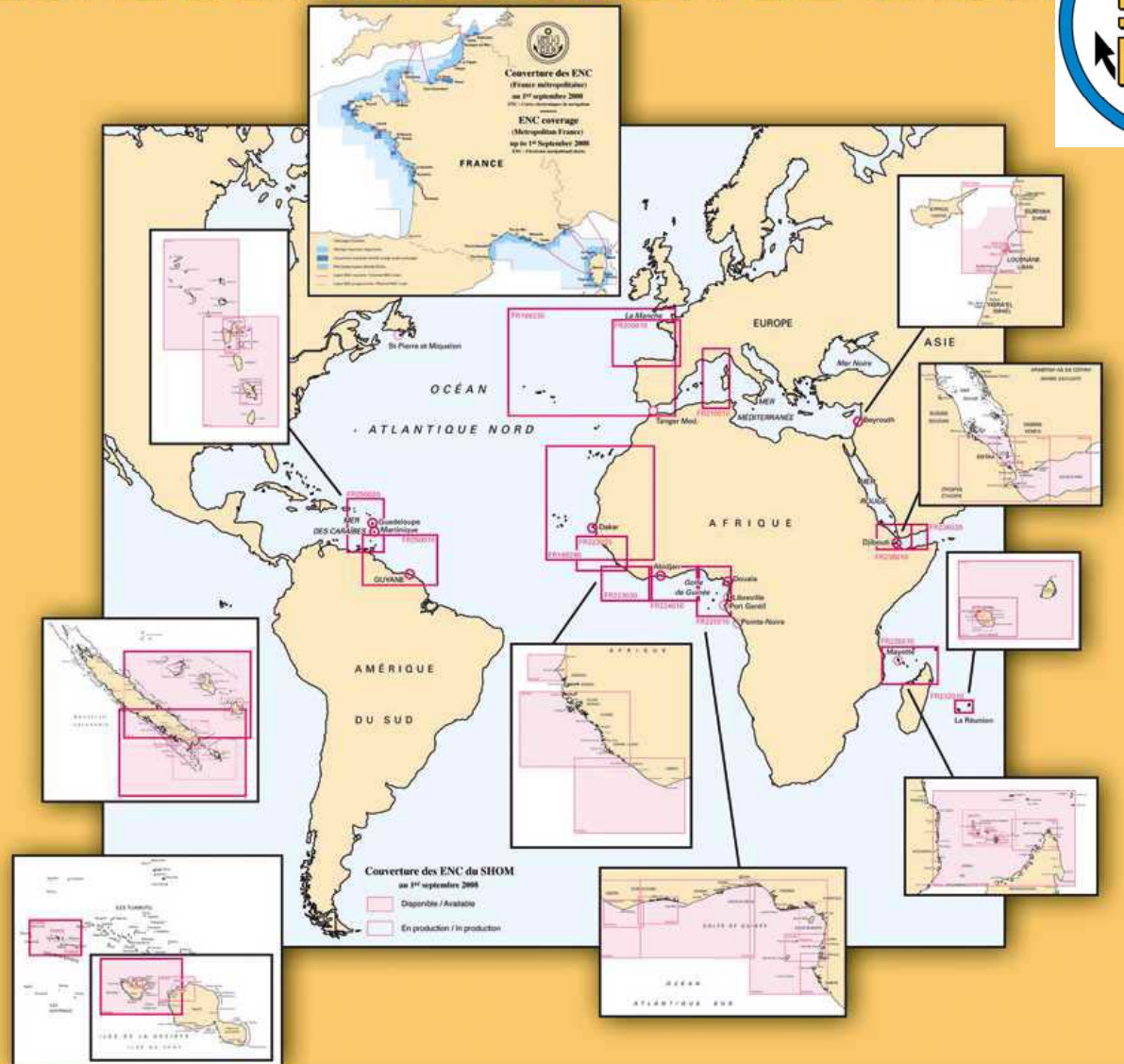


# ENC coverage (2008)



# ENC coverage (2008)

## ZONE DE PRODUCTION DU SHOM



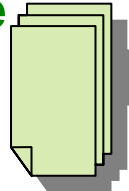


# ENC production principles - SHOM

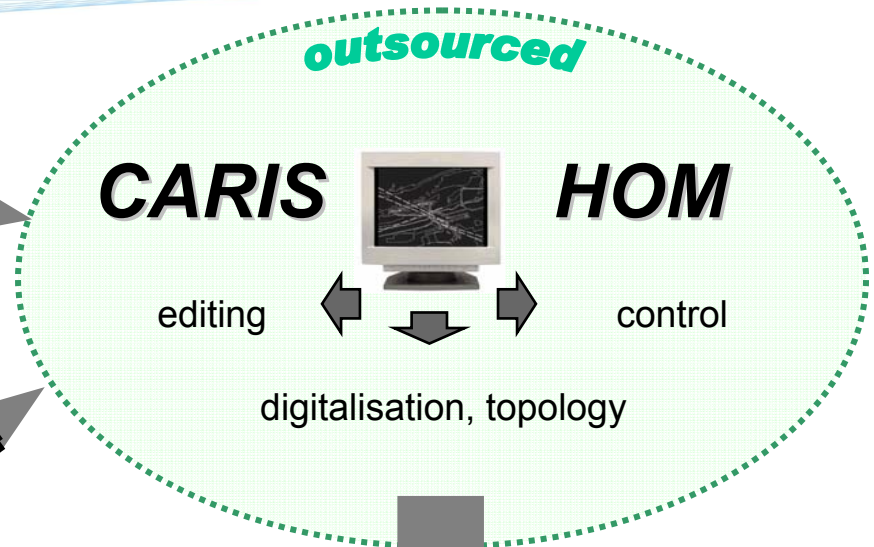
## Hydrographic database



(Aids to nav., wrecks, obstructions, restricted areas)



WGS84

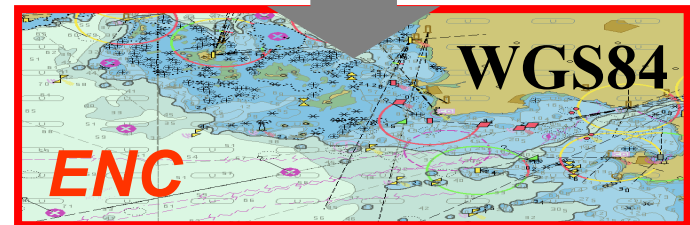


## Paper chart (reference)



- Vector / S57 data
- structured digital archives
- repromats for old charts

## Control + validation + Primar



# Check of ENC content

**Compliance with S-57 standard**

**Internal consistency (« SHOM » additionnal specification)**

**Reliability and accuracy of the data**

**Consistency with neighbouring producers**

## Updating

**Identical to paper chart Notices to Mariners, except T and P notices which are not encoded so far)**

### 3. Team skills for ENC production

#### Encoding (all former paper chart cartographers)

- \* Paper chart + CARIS + S57 knowledge
- \* 1 Engineer day to day support for problems and special cases  
=> temporarily outsourced (CARIS/IIC)

#### Checking (former hydrographers + paper chart cartographers)

- \* Paper chart + S57 + S52 knowledge
- \* Safety of navigation awareness  
=> role of the Hydrographic Office

# Team evolutions ?

- With constant resources, ENC production has obviously lowered the paper chart branch capacity (10/60 people => 15%).
- All cartographers will progressively do paper and electronic charts ; they will acquire both skills which will be probably required in the future...
- Training in ENC production = companionship
- Some cartographers having a navy background : interesting for checking, with a user point of view.

## 4. Issues

### Time delay between paper chart edition and corresponding ENC edition

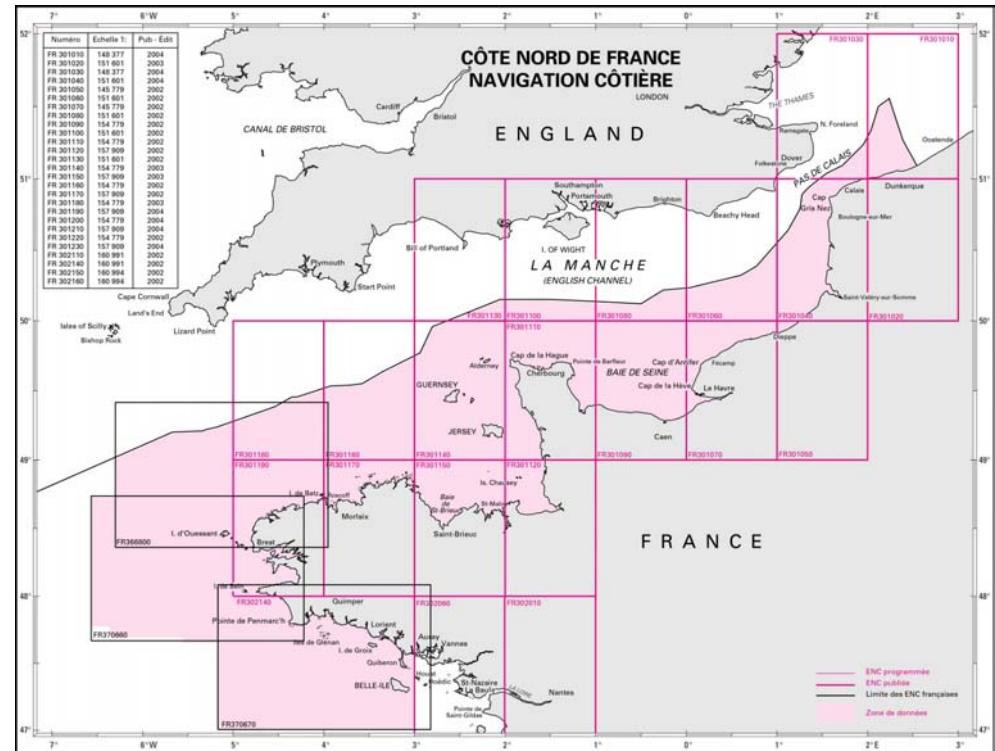
The 2 products are not simultaneously produced : up to 6 months delay between the 2 releases (only critical corrections are done via ER in the meantime).

=> main improvement for SHOM production

# 4. Issues

## ENC scheme : back to a scheme based on paper chart limits

- 1 ENC = 1 cartographic unit
- more rational and efficient as long as ENC are based on paper charts (for management, updating, catalogs, etc.)



## 4. Issues

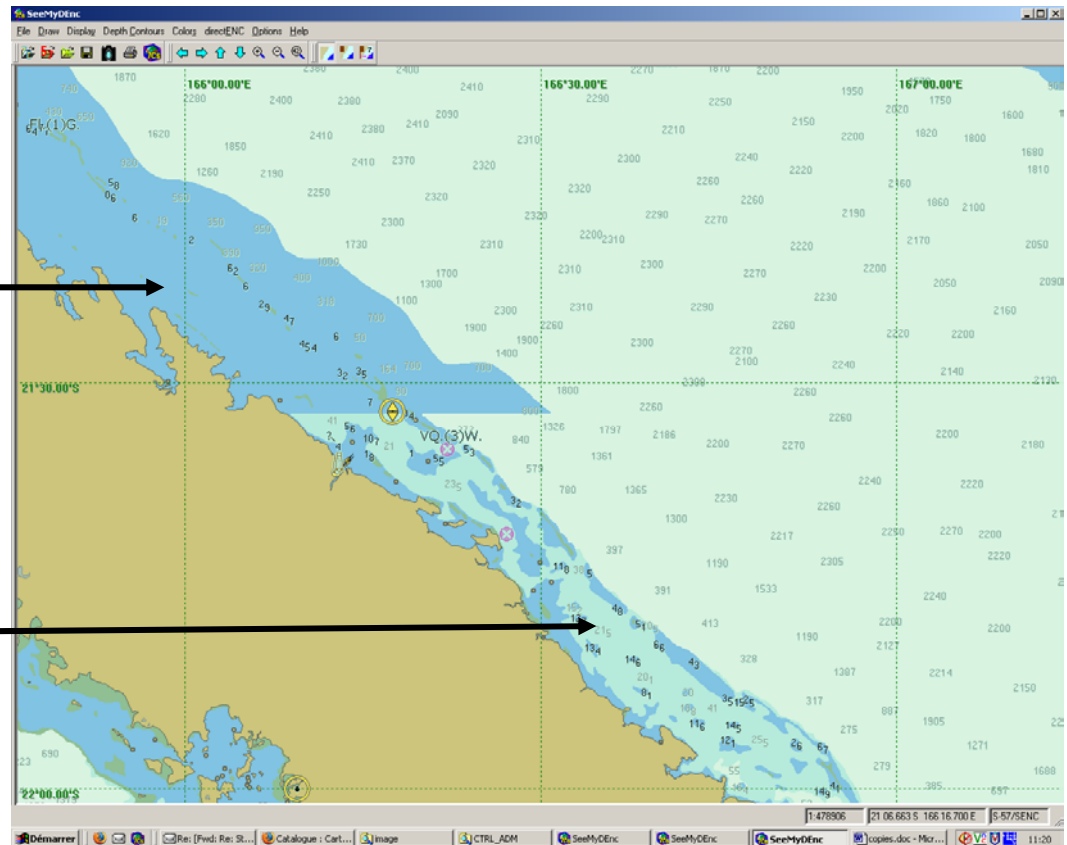
Old data source is not compatible with e-navigation

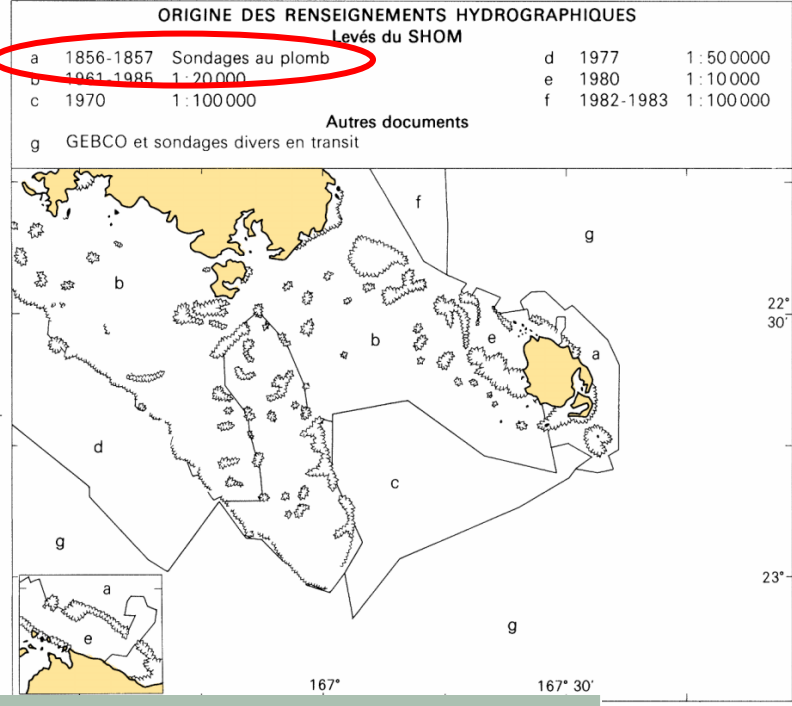
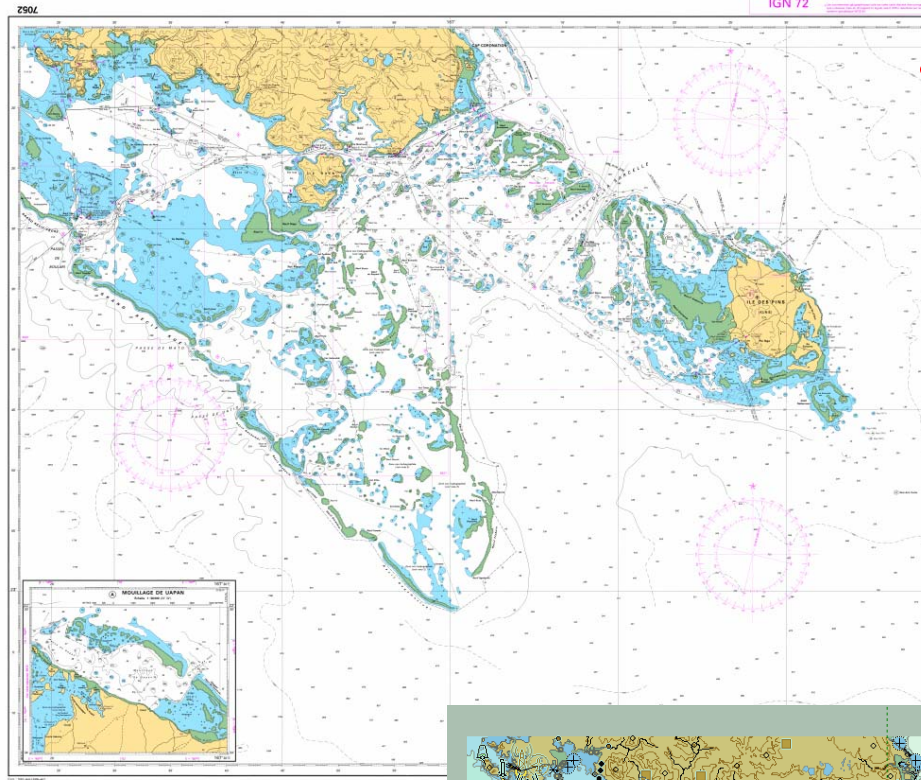
Example 1 : Nouvelle-Calédonie, at same scale

less accurate data

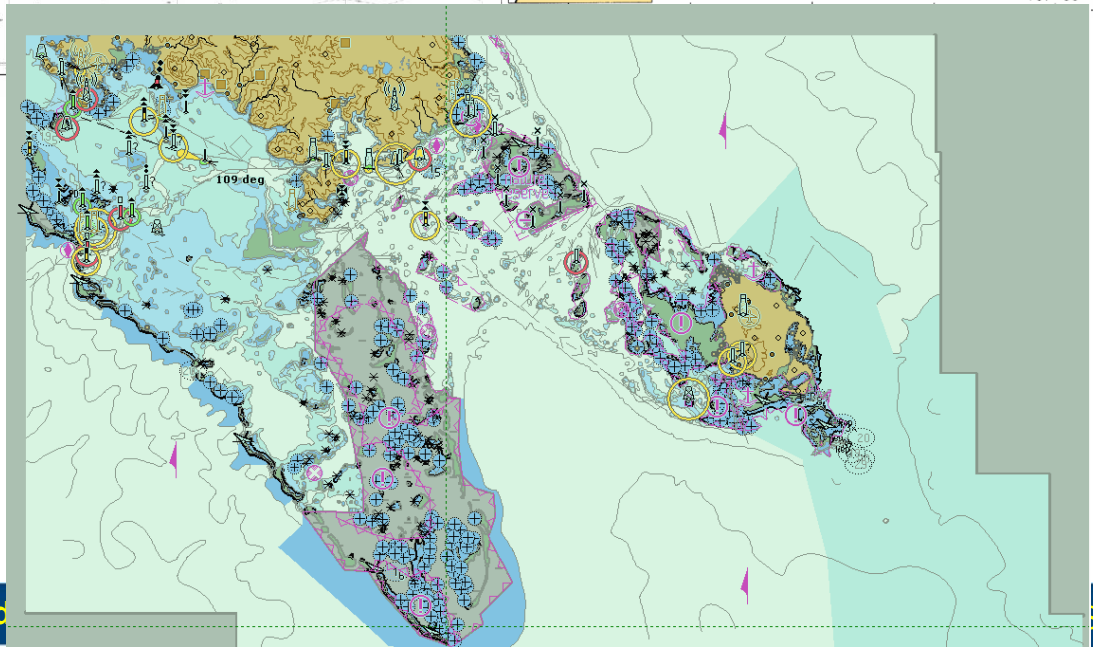


modern data





**ENC = same  
source data  
as paper charts**







*Thank you for your attention*

***QUESTIONS ?***

*<http://www.shom.fr/ENC.htm>*

*[cartesel@shom.fr](mailto:cartesel@shom.fr)*